

**CONCRETE BATCHING PLANT
AIR GENERAL PERMIT REGISTRATION FORM**

Part II. Notification to Permitting Office

(Detach and submit to appropriate permitting office; keep copy onsite)

Instructions: To give notice to the Department of an eligible facility's intent to use this air general permit, the owner or operator of the facility must detach and complete this part of the Air General Permit Registration Form and submit it to the appropriate Department of Environmental Protection or local air pollution control program office which has permitting authority. Please type or print clearly all information, and enclose the appropriate air general permit registration processing fee pursuant to Rule 62-4.050, F.A.C. (\$100 as of the effective date of this form)

10/0490-003

Registration Type

Check one:

INITIAL REGISTRATION - Notification of intent to:

- Construct and operate a proposed new facility.
- Operate an existing facility not currently using an air general permit (e.g., a facility proposing to go from an air operation permit to an air general permit).

RE-REGISTRATION (for facilities currently using an air general permit) - Notification of intent to:

- Continue operating the facility after expiration of the current term of air general permit use.
- Continue operating the facility after a change of ownership.
- Make an equipment change requiring re-registration pursuant to Rule 62-210.310(2)(e), F.A.C., or any other change not considered an administrative correction under Rule 62-210.310(2)(d), F.A.C.

Surrender of Existing Air Operation Permit(s) - For Initial Registrations Only

If the facility currently holds one or more air operation permits, such permit(s) must be surrendered by the owner or operator upon the effective date of this air general permit. In such case, check the first box, and indicate the operation permits being surrendered. If no air operation permits are held by the facility, check the second box.

- All existing air operation permits for this facility are hereby surrendered upon the effective date of this air general permit; specifically permit number(s): _____
- No air operation permits currently exist for this facility.

General Facility Information

Facility Owner/Company Name (Name of corporation, agency, or individual owner who or which owns, leases, operates, controls, or supervises the facility.)

BET-ER Mix, Inc.

Site Name (Name, if any, of the facility site; e.g., Plant A, Metropolis Plant, etc. If more than one facility is owned, a registration form must be completed for each.)

Copeland Industrial Park Ready Mix Plant

Facility Location (Provide the physical location of the facility, not necessarily the mailing address.)

Street Address: 3901 Copeland Dr

City: Zephyrhills

County: Pasco

Zip Code: 33540 - 8409

Facility Start-Up Date (Estimated start-up date of proposed new facility.) (N/A for existing facility)

N/A

2011 OCT 26 AM 9:18
 FLORIDA DEPARTMENT OF ENVIRONMENTAL PROTECTION
 STAFF & VOLUNTEERS

Owner/Authorized Representative

Name and Position Title (Person who, by signing this form below, certifies that the facility is eligible to use this air general permit.)

Print Name and Title: John (Terry) White, President

Owner/Authorized Representative Mailing Address

Organization/Firm: BET-ER Mix, Inc.

Street Address: P.O. Box 5577

City: Hudson

County: Pasco

Zip Code: 34647

Owner/Authorized Representative Telephone Numbers

Telephone: (727) 862-2239

Fax: (727) 868-5617

Cell phone (optional):

Facility Contact (If different from Owner/Authorized Representative)

Name and Position Title (Plant manager or person to be contacted regarding day-to-day operations at the facility.)

Print Name and Title: Leroy Ludeker

Facility Contact Mailing Address

Organization/Firm: BET-ER Mix, Inc

Street Address: P.O. Box 5577

City: Hudson

County: Pasco

Zip Code: 34647

Facility Contact Telephone Numbers

Telephone: (727) 862-2239

Fax: (727) 868-5617

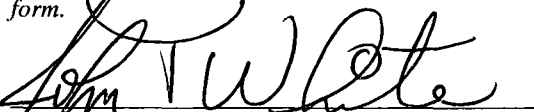
Cell phone (optional): (727) 863-6072

Owner/Authorized Representative Statement

This statement must be signed and dated by the person named above as owner or authorized representative

I, the undersigned, am the owner or authorized representative of the owner or operator of the facility addressed in this Air General Permit Registration Form. I hereby certify, based on information and belief formed after reasonable inquiry, that the facility addressed in this registration form is eligible for use of this air general permit and that the statements made in this registration form are true, accurate and complete. Further, I agree to operate and maintain the facility described in this registration form so as to comply with all applicable standards for control of air pollutant emissions found in the statutes of the State of Florida and rules of the Department of Environmental Protection and revisions thereof.

I will promptly notify the Department of any changes to the information contained in this registration form.


Signature

10-19-11
Date

2011 OCT 26 AM 9:18
FLORIDA DEPARTMENT OF
ENVIRONMENTAL PROTECTION
3900 FAVENHUE
TALLAHASSEE, FLORIDA 32309

Type of Facility

Check one:

Stationary Facility

Relocatable Facility

Type(s) of Reasonable Precautions Used to Prevent Unconfined Emissions

Check all precautions to be used for the management of roads, parking areas, stock piles and yards:

Pave Roads

Pave Parking Areas

Pave Yards

Maintain Roads/Parking/Yards

Use Water Application

Use Dust Suppressant

Remove Particulate Matter

Reduce Stock Pile Height

Install Wind Breaks

Check all precautions to be used for the management of drop points to trucks:

Spray Bar

Chute

Enclosure

Partial enclosure

Description of Reasonable Precautions

Below, or as an attachment to this form, provide details of all types of reasonable precautions to be used to prevent unconfined emissions at the facility.

All aggregate storage piles on this site and roadway are sprayed by a sprinkler system to control any fugitive emissions caused by vehicular traffic or prevailing winds. The sprinkler system discharge is permitted by Generic Permit For Wastewater Discharges From Concrete Batch Plants. Vehicular speed limit in the facility is 5 MPH.

2011 OCT 26 AM 9:18
COUNTING
INVENTORY

FLORIDA DEPARTMENT OF
ENVIRONMENTAL PROTECTION

Description of Facility

Below, or as an attachment to this form, provide a description of the concrete batching plant operations at the facility in sufficient detail to demonstrate the facility's eligibility for use of this air general permit and to provide a basis for tracking any future equipment or process changes at the facility. Describe all air pollutant-emitting processes and equipment at the facility, and identify any air pollution control measures or equipment used.

This application is for continuing operation of a batching concrete ready mix plant with central baghouse, controlling emissions from loading operations of silo, weight hopper and batching operations. Approximate production is 60,000 cubic yards of concrete per year. Operating hours are 12 hours per day, six days per week.

Emissions from the hoppers, batching operations, and pneumatic loading from the silo are controlled by a C&W Manufacturing And Sales Company Model CP-1220-1678 Central Dust Collector, incorporating 16 - 8" diameter polyester cartridges with 1216 ft² of cloth area and air to cloth ration of 5.5 acfm/ft². The design efficiency of the unit is 99.99%. The typical silo loading rate is 25 tons per hour for either fly ash or cement. Flyash/Cement emissions during split silo loading are controlled by Merts Model 250 baghouse.

* SEE ATTACHED E-MAIL DATED 11/21/11
AS AN ADDENDUM & CLARIFICATION
OF EMISSION UNIT DATA AT THIS
LOCATION.

FLORIDA DEPARTMENT OF
ENVIRONMENTAL PROTECTION
2011 OCT 25 AM 9:18
PERMITS RECEIVED
COUNTING

Dibble, Dickson

From: Leroy Ludeker [lludeker@betermix.com]
Sent: Monday, November 21, 2011 10:44 AM
To: Dibble, Dickson
Subject: Beter Mix

Dickson

Here is the info

#7775276

Crusher

Name Inertia
Model # HS 4048
Ser # 90061005
Belt size 48
H.P. 225
Max Rate 125

Screen #1

Name The Screen Machine
Model # SCN 48-2
Ser # AJ2374
Belt size 36
H.P. 5
Max Rate 125

Screen #2

Name Bivi Tech
Model # BT 4-16
Ser # 1428
Belt size 36
H.P. 15
Max Rate 125

Screen #3

Name The Screen Machine
Model # SCN 48-2
Ser # AA2520
Belt size 36
H.P. 5
Max Rate 125

#101-0490

Zephyrhills Plant

Central Dust Collector C&W Model CP-1220-1678
Split Silo has 2 bag houses one for Flyash, one for Cement both are Merts Model 250

Thanks, Leroy



ENVIRONMENTAL SAFETY CONSULTANTS, INC.

VIA CERTIFIED MAIL, RETURN RECEIPT REQUESTED
NO. 7009 0820 0001 7562 3811

May 11, 2011

Ms. Danielle Henry
Air Compliance Supervisor, Southwest District Office
FLORIDA DEPARTMENT OF ENVIRONMENTAL PROTECTION
13051 North Telecom Parkway
Temple Terrace, Florida 33637

Re: Visible Emissions Test Results, B.E.T.ER MIX Concrete
3961 Copeland Drive, Zephyrhills, Florida
DEP Permit No. 1010490-002-AG

Dear Ms. Henry:

Enclosed please find the Visible Emissions (VE) Test Results for the above-referenced Concrete Batch sources for B.E.T.ER Mix, Inc. (BMX). The Tests were performed in conformance with the Florida Department of Environmental Protection's (FDEP's) requirements outlined in the General Permit. A total of 26.10 tons of flyash were unloaded in 62 minutes into the north side of the split silo, giving a loading rate of 25.26 tons per hour (TPH). The south side of the split silo was loaded with 26.74 tons of cement in 51.5 minutes for a rate of 31.15 TPH. There were no visible emissions from the baghouse controlling emissions from the cement and flyash split silo. The baghouse controlling emissions from the mixing hopper and the truck loading operation was tested while two mixer trucks were loaded. There were no visible emissions from the baghouse controlling the batching operations.

Please advise of any questions or clarifications required. Thank you for your assistance.

Sincerely,
ENVIRONMENTAL SAFETY CONSULTANTS, INC.

Christopher G. Stirrat, P.E., Staff Engineer III

cc: Mr. Chuck Jackson, BMX

Project No. 1362-0001

f:\corel\reports\veresultzephyrhills2011.bmx.wpd

FLORIDA DEPARTMENT OF
ENVIRONMENTAL PROTECTION
2011 OCT 26 AM 9:18
FINDING REVENUE
COUJUNING

VISIBLE EMISSION OBSERVATION FORM 1

Method Used (Circle One)
 Method 9 200A 200B Other _____

Company Name
 Beter Mix, Inc
 Facility Name
 Zephyrhills Plant
 Street Address
 3961 Copeland Drive
 City
 Zephyrhills State FL Zip 33542

Process
 Silo Loading, Flyash Unit # NA Operating Mode 25.26 TPH
 Control Equipment
 Baghouse Operating Mode Continuous

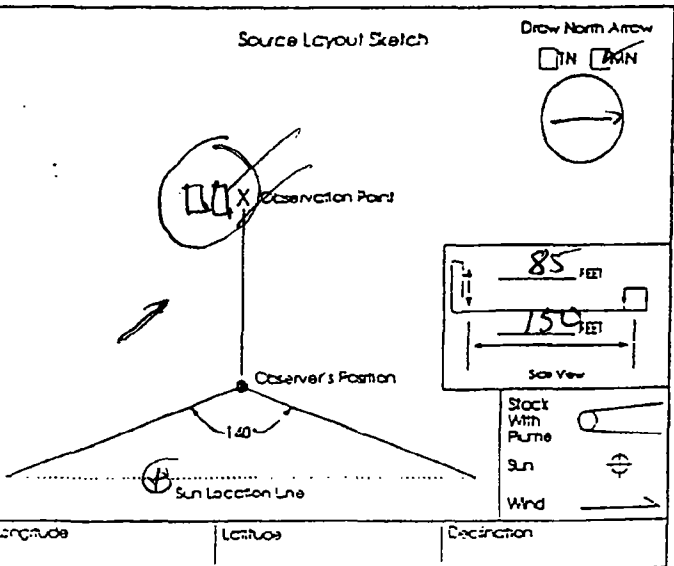
Describe Emission Point
 Vents at Top of baghouse

Height of Emiss. Pt.
 Start 85' End 85' Height of Emiss. Pt. Rel. to Observer
 Start 85' End 85'
 Distance to Emiss. Pt.
 Start 150' End 150' Direction to Emiss. Pt. (Degrees)
 Start 243° End 243°

Vertical Angle to Coal Pt.
 Start 25° End 25° Direction to Coal Pt. (Degrees)
 Start 244° End 244°
 Distance and Direction to Observation Point from Emission Point
 Start 2' North and up End 2' North and up

Describe Emissions
 Start None End None
 Emission Color
 Start None End None Water Droplet Plume
 Attached Disconnected None

Describe Plume Background
 Start Sky End Sky
 Background Color
 Start Blue End Blue Sky Condensate
 Start Clear End Clear
 Wind Speed
 Start 0-1mph End 0-1mph Wind Direction
 Start SE End SE
 Ambient Temp.
 Start 86°F End 88°F Wet Bulb Temp.
 Start 66°F RH Percent
 Start 36



Additional Information
 Pumping done at 10:26 hrs
 26.10 Tons in 62 minutes

Form Number _____ Page 1 of 2
 Continued on VEO Form Number _____

Observation Date	Time Zone	Start Time	End Time		
5/10/11	EDST	0824	1024		
Sec	0	15	30	45	Comments
1	0	0	0	0	
2	0	0	0	0	
3	0	0	0	0	
4	0	0	0	0	
5	0	0	0	0	
6	0	0	0	0	
7	0	0	0	0	
8	0	0	0	0	
9	0	0	0	0	
10	0	0	0	0	
11	0	0	0	0	
12	0	0	0	0	
13	0	0	0	0	
14	0	0	0	0	
15	0	0	0	0	
16	0	0	0	0	
17	0	0	0	0	
18	0	0	0	0	
19	0	0	0	0	
20	0	0	0	0	
21	0	0	0	0	
22	0	0	0	0	
23	0	0	0	0	
24	0	0	0	0	
25	0	0	0	0	
26	0	0	0	0	
27	0	0	0	0	
28	0	0	0	0	
29	0	0	0	0	
30	0	0	0	0	

Observer's Name (Print)
 Christopher G. Sturt
 Observer's Signature
 [Signature] Date 5/10/11
 Organization
 Environmental Safety Consultants, Inc.
 Certified by
 Aeromet Temp Date 2/1/11

VISIBLE EMISSION OBSERVATION FORM 1

Method Used (Circle One)
 Method 9 203A 203B Other: _____

Company Name
BETor Mux
 Facility Name
Zephyrhills Plant
 Street Address
3961 Copeland Drive
 City
Zephyrhills State FL Zip 33542

Process
Silo Loading, Flyash Unit # N/A Operating Mode
25/26 TPH
 Control Equipment
Baghouse Operating Mode
Continuous

Describe Emission Port

Height of Emiss. Pt. Start _____ End _____ Height of Emiss. Pt. Rel. to Observer Start _____ End _____
 Distance to Emiss. Pt. Start _____ End _____ Direction to Emiss. Pt. (Degrees) Start _____ End _____

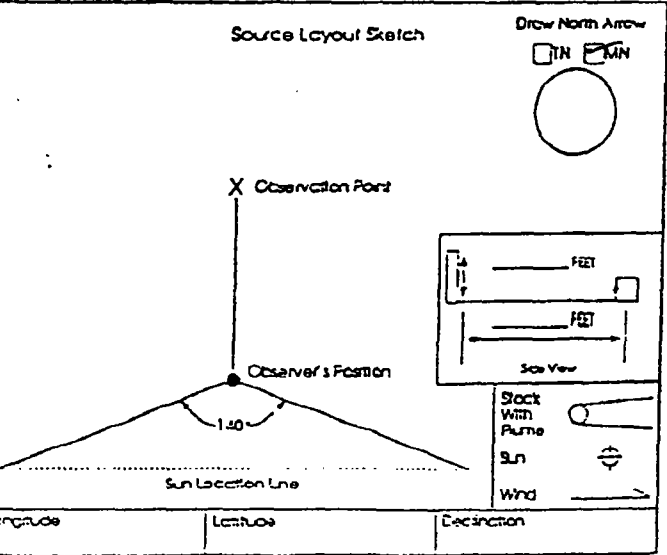
Vertical Angle to Obs. Pt. Start _____ End _____ Direction to Obs. Pt. (Degrees) Start _____ End _____
 Distance and Direction to Observation Point from Emission Port Start _____ End _____

Describe Emissions

Start _____ End _____ Emission Color _____ Water Droplet Plume
 Start _____ End _____ Attached Detached None

Describe Plume Background

Start _____ End _____ Background Color _____ Sky Conditions _____
 Start _____ End _____ Wind Speed _____ Wind Direction _____
 Start _____ End _____ Ambient Temp. _____ Wet Bulb Temp. _____ RH Percent _____
 Start _____ End _____



Additional Information

Form Number _____ Page 2 of 2
 Continued on VEO Form Number _____

Observation Date	Time Zone	Start Time	End Time						
<u>5/10/11</u>	<u>EDST</u>	<u>0924</u>	<u>1024</u>	Sec	0	15	30	45	Comments
1	0	0	0	0					
2	0	0	0	0					
3	0	0	0	0					
4	0	0	0	0					
5	0	0	0	0					
6	0	0	0	0					
7	0	0	0	0					
8	0	0	0	0					
9	0	0	0	0					
10	0	0	0	0					
11	0	0	0	0					
12	0	0	0	0					
13	0	0	0	0					
14	0	0	0	0					
15	0	0	0	0					
16	0	0	0	0					
17	0	0	0	0					
18	0	0	0	0					
19	0	0	0	0					
20	0	0	0	0					
21	0	0	0	0					
22	0	0	0	0					
23	0	0	0	0					
24	0	0	0	0					
25	0	0	0	0					
26	0	0	0	0					
27	0	0	0	0					
28	0	0	0	0					
29	0	0	0	0					
30	0	0	0	0					

Observer's Name (Print)
Christopher G. Strout
 Observer's Signature
[Signature] Date 5/10/11
 Organization
Environmental Safety Consultants, Inc.
 Certified by
EPA, Tampa Date 2/1/11

VISIBLE EMISSION OBSERVATION FORM 1

Form Number Page 1 of 2
Continued on VEO Form Number

Method Obs'd (Circle One)
Method 9 203A 203B Other _____

Company Name BET er Mix, Inc.
Facility Name Zephyrhills Plant
Street Address 3901 Copeland Drive
City Zephyrhills State FL Zip 33542

Process Silo Loading Cement Unit # NA Operating Mode 31.15 TPH
Control Equipment Baghouse Operating Mode Continuous

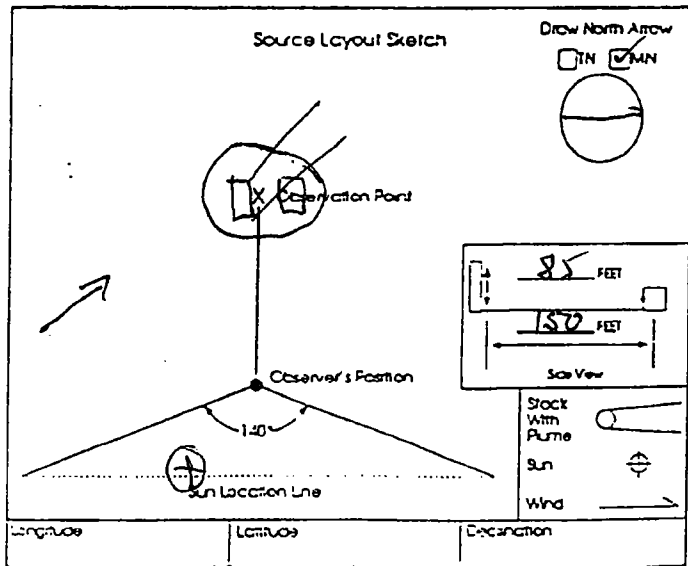
Describe Emission Point
Vents at top of baghouse

Height of Emiss. Pt.
Start 85' End 85' Height of Emiss. Pt. Rel. to Observer
Start 85' End 85'
Distance to Emiss. Pt.
Start 150' End 150' Direction to Emiss. Pt. (Degrees)
Start 240° End 240°

Vertical Angle to Obs. Pt.
Start 25° End 25° Direction to Obs. Pt. (Degrees)
Start 241° End 241°
Distance and Direction to Observation Point from Emission Point
Start 2' North and up End 2' North and up

Describe Emissions
Start None End None Water Droplet/Pume
Emission Color Start None End None Attached Detached None

Describe Pume Background
Start Sky End Sky Sky Conditions
Background Color Start Blue End Blue Start Clear End Clear
Wind Speed Start 0-1mph End 0-1mph Wind Direction Start SE End SE
Ambient Temp. Start 84°F End 88°F Wet Bulb Temp. 65°F RH Percent 30



Additional Information
26.74 Tons in 51.5 minutes

Observation Date	Time Zone	Start Time	End Time	Comments				
<u>5/10/11</u>	<u>EDST</u>	<u>0922</u>	<u>1014</u>					
Sec Mn	0	15	30	45				
1	0	0	0	0				
2	0	0	0	0				
3	0	0	0	0				
4	0	0	0	0				
5	0	0	0	0				
6	0	0	0	0				
7	0	0	0	0				
8	0	0	0	0				
9	0	0	0	0				
10	0	0	0	0				
11	0	0	0	0				
12	0	0	0	0				
13	0	0	0	0				
14	0	0	0	0				
15	0	0	0	0				
16	0	0	0	0				
17	0	0	0	0				
18	0	0	0	0				
19	0	0	0	0				
20	0	0	0	0				
21	0	0	0	0				
22	0	0	0	0				
23	0	0	0	0				
24	0	0	0	0				
25	0	0	0	0				
26	0	0	0	0				
27	0	0	0	0				
28	0	0	0	0				
29	0	0	0	0				
30	0	0	0	0				

Observer's Name (Print) Christopher G. Starnad
Observer's Signature [Signature] Date 5/10/11
Organization Environmental Safety Consultants, Inc
Completed by Hermet, Tampa Date 2/1/11

VISIBLE EMISSION OBSERVATION FORM 1

Form Number					Page	2	of	2
Continued on VEO Form Number								

Method Used (Circle One)
 Method 9 200A 2028 Other _____

Company Name
 Beter Mix, Inc.
 Facility Name
 Zephyrhills Plant
 Street Address
 3961 Copeland Drive
 City
 Zephyrhills State FL Zip 33542

Process
 Silo Loading, Cement Unit # NA Operating Mode 31.16TPH
 Control Equipment
 Baghouse Operating Mode Continuous

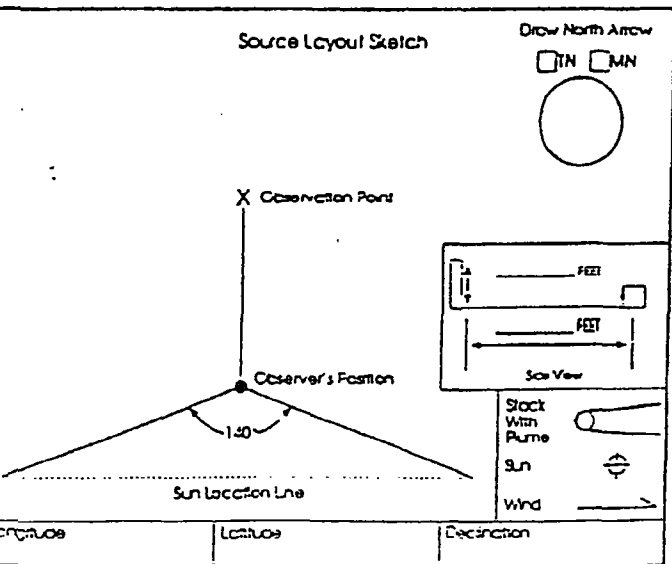
Describe Emission Point

Height of Emiss. Pt.
 Start End Height of Emiss. Pt. Rel. to Observer
 Start End
 Distance to Emiss. Pt.
 Start End Direction to Emiss. Pt. (Degrees)
 Start End

Vertical Angle to Obs. Pt.
 Start End Direction to Obs. Pt. (Degrees)
 Start End
 Distance and Direction to Observation Port from emission Port
 Start End

Describe Emissions
 Start End
 Emission Color
 Start End Water Droplet Plume
 Affected Detached None

Describe Plume Background
 Start End
 Background Color
 Start End Sky Conditions
 Start End
 Wind Speed
 Start End Wind Direction
 Start End
 Ambient Temp. Start End
 Wet Bulb Temp. RH Percent
 Start End



Additional Information

Observation Date	Time Zone	Start Time	End Time	Comments				
5/10/11	EDT	0922	1014					
Sec Min	0	15	30	45				
1	0	0	0	0				
2	0	0	0	0				
3	0	0	0	0				
4	0	0	0	0				
5	0	0	0	0				
6	0	0	0	0				
7	0	0	0	0				
8	0	0	0	0				
9	0	0	0	0				
10	0	0	0	0				
11	0	0	0	0				
12	0	0	0	0				
13	0	0	0	0				
14	0	0	0	0				
15	0	0	0	0				
16	0	0	0	0				
17	0	0	0	0				
18	0	0	0	0				
19	0	0	0	0				
20	0	0	0	0				
21	0	0	0	0				
22	0	0	0	0				
23								
24								
25								
26								
27								
28								
29								
30								

Observer's Name (Print)
 Christopher G. Storrard
 Observer's Signature
 [Signature] Date 5/10/11
 Organization
 Environmental Safety Consultants, Inc.
 Certified by
 Acromet, Tampa Date 2/1/11

VISIBLE EMISSION OBSERVATION FORM 1

Method Used (Circle One)
 Method 9 200A 200B Other _____

Company Name
 Siter Mix, Inc
 Facility Name
 Zephyrhills Plant
 Street Address
 3961 Copeland Drive
 City
 Zephyrhills State
 FL Zip
 33542

Process
 Truck loading Unit #
 N/A Operating Mode
 Batch
 Central Equipment
 Baghouse Operating Mode
 Continuous

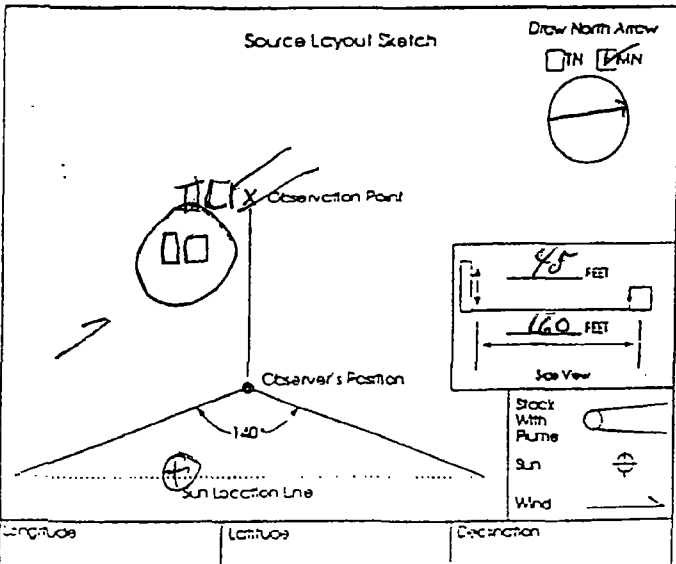
Describe Emission Point
 Vent on baghouse

Height of Emiss. Pt.
 Start 45' End 45' Height of Emiss. Pt. Rel. to Observer
 Start 45' End 45'
 Distance to Emiss. Pt.
 Start 160' End 160' Direction to Emiss. Pt. (Degrees)
 Start 245° End 245°

Vertical Angle to Obs. Pt.
 Start 17° End 17° Direction to Obs. Pt. (Degrees)
 Start 246° End 246°
 Distance and Direction to Observation Point from Emission Point
 Start 4' North and up End 4' North and up

Describe Emissions
 Start None End None
 Emission Color
 Start None End None Water Droplet Plume
 Affected Detached None

Describe Plume Background
 Start Sky End Sky
 Background Color
 Start Blue End Blue Sky Conditions
 Start Clear End Clear
 Wind Speed
 Start 0-2mph End 0-2mph Wind Direction
 Start SE End SE
 Ambient Temp.
 Start 86° F End 88° F Wet Bulb Temp.
 65 OF RH Percent
 30



Additional Information

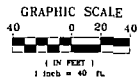
Form Number _____ Page _____ of _____
 Continued on VEO Form Number _____

Sec Min	Time Zone				Start Time	End Time	Comments
	0	15	30	45			
	EDST				0951	1157	
1	0	0	0	0			
2	0	0	0	0			
3	0	0	0	0			
4	0	0	0	0			
5	0	0	0	0			
6	0	0	0	0			
7	0	0	0	0			
8	0	0	0	0			
9	0	0					
10							
11							
12							
13							
14		0	0	0			1148 hr
15	0	0	0	0			
16	0	0	0	0			
17	0	0	0				
18							
19							
20							
21							
22							
23							
24							
25							
26							
27							
28							
29							
30							

Observer's Name (Print)
 Christopher G. Stewart
 Observer's Signature
 Chris Stewart Date
 5/10/11
 Organization
 Environmental Safety Consultants Inc
 Certified By
 Kerrod, Tampa Date
 2/1/11

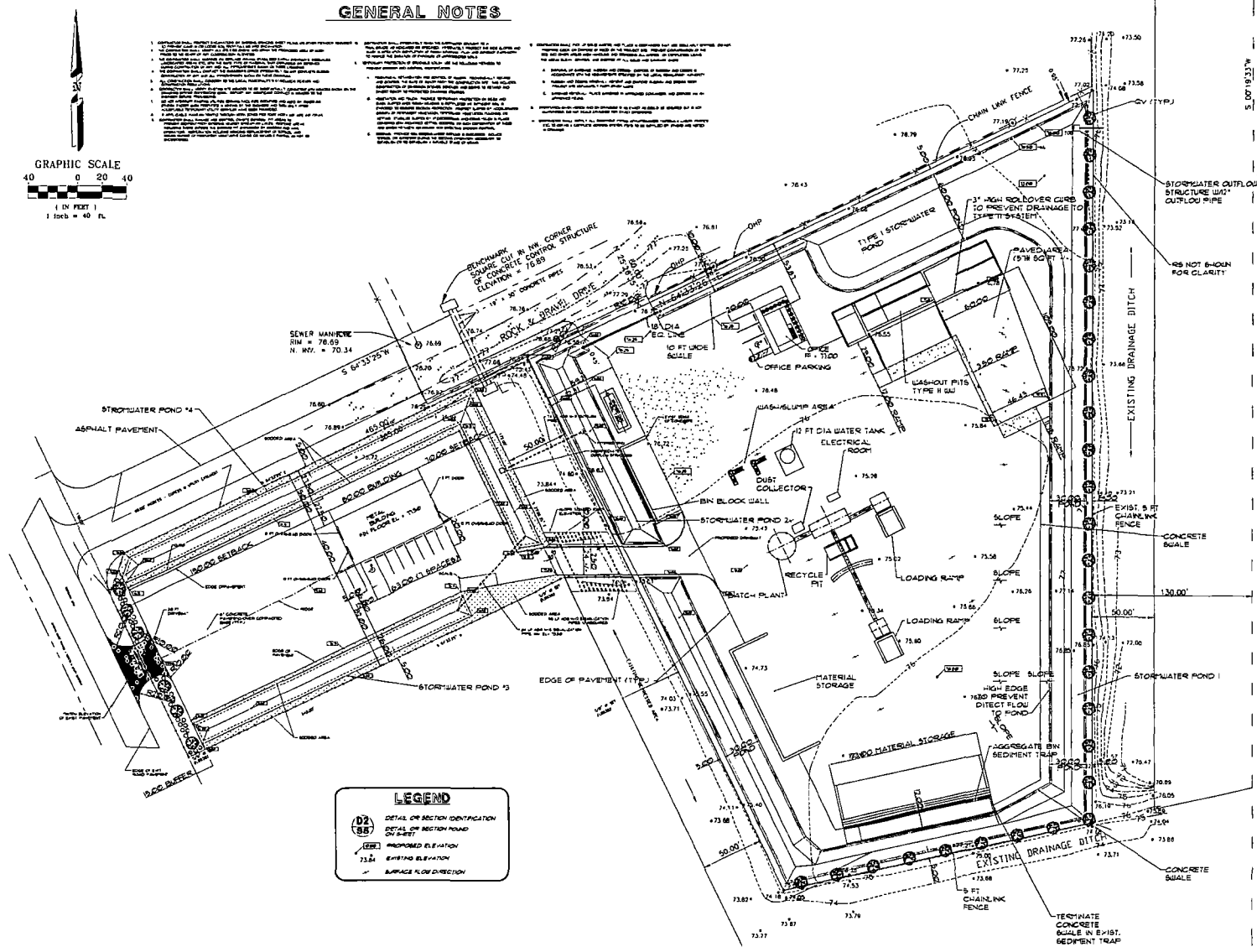
GENERAL NOTES

1. ALL DIMENSIONS UNLESS OTHERWISE NOTED ARE TO FACE UNLESS OTHERWISE NOTED.
2. ALL DIMENSIONS UNLESS OTHERWISE NOTED ARE TO FACE UNLESS OTHERWISE NOTED.
3. ALL DIMENSIONS UNLESS OTHERWISE NOTED ARE TO FACE UNLESS OTHERWISE NOTED.
4. ALL DIMENSIONS UNLESS OTHERWISE NOTED ARE TO FACE UNLESS OTHERWISE NOTED.
5. ALL DIMENSIONS UNLESS OTHERWISE NOTED ARE TO FACE UNLESS OTHERWISE NOTED.
6. ALL DIMENSIONS UNLESS OTHERWISE NOTED ARE TO FACE UNLESS OTHERWISE NOTED.
7. ALL DIMENSIONS UNLESS OTHERWISE NOTED ARE TO FACE UNLESS OTHERWISE NOTED.
8. ALL DIMENSIONS UNLESS OTHERWISE NOTED ARE TO FACE UNLESS OTHERWISE NOTED.
9. ALL DIMENSIONS UNLESS OTHERWISE NOTED ARE TO FACE UNLESS OTHERWISE NOTED.
10. ALL DIMENSIONS UNLESS OTHERWISE NOTED ARE TO FACE UNLESS OTHERWISE NOTED.
11. ALL DIMENSIONS UNLESS OTHERWISE NOTED ARE TO FACE UNLESS OTHERWISE NOTED.
12. ALL DIMENSIONS UNLESS OTHERWISE NOTED ARE TO FACE UNLESS OTHERWISE NOTED.
13. ALL DIMENSIONS UNLESS OTHERWISE NOTED ARE TO FACE UNLESS OTHERWISE NOTED.
14. ALL DIMENSIONS UNLESS OTHERWISE NOTED ARE TO FACE UNLESS OTHERWISE NOTED.
15. ALL DIMENSIONS UNLESS OTHERWISE NOTED ARE TO FACE UNLESS OTHERWISE NOTED.
16. ALL DIMENSIONS UNLESS OTHERWISE NOTED ARE TO FACE UNLESS OTHERWISE NOTED.
17. ALL DIMENSIONS UNLESS OTHERWISE NOTED ARE TO FACE UNLESS OTHERWISE NOTED.
18. ALL DIMENSIONS UNLESS OTHERWISE NOTED ARE TO FACE UNLESS OTHERWISE NOTED.
19. ALL DIMENSIONS UNLESS OTHERWISE NOTED ARE TO FACE UNLESS OTHERWISE NOTED.
20. ALL DIMENSIONS UNLESS OTHERWISE NOTED ARE TO FACE UNLESS OTHERWISE NOTED.



MISC. NOTES

1. ALL DIMENSIONS UNLESS OTHERWISE NOTED ARE TO FACE UNLESS OTHERWISE NOTED.
2. ALL DIMENSIONS UNLESS OTHERWISE NOTED ARE TO FACE UNLESS OTHERWISE NOTED.
3. ALL DIMENSIONS UNLESS OTHERWISE NOTED ARE TO FACE UNLESS OTHERWISE NOTED.
4. ALL DIMENSIONS UNLESS OTHERWISE NOTED ARE TO FACE UNLESS OTHERWISE NOTED.
5. ALL DIMENSIONS UNLESS OTHERWISE NOTED ARE TO FACE UNLESS OTHERWISE NOTED.
6. ALL DIMENSIONS UNLESS OTHERWISE NOTED ARE TO FACE UNLESS OTHERWISE NOTED.
7. ALL DIMENSIONS UNLESS OTHERWISE NOTED ARE TO FACE UNLESS OTHERWISE NOTED.
8. ALL DIMENSIONS UNLESS OTHERWISE NOTED ARE TO FACE UNLESS OTHERWISE NOTED.
9. ALL DIMENSIONS UNLESS OTHERWISE NOTED ARE TO FACE UNLESS OTHERWISE NOTED.
10. ALL DIMENSIONS UNLESS OTHERWISE NOTED ARE TO FACE UNLESS OTHERWISE NOTED.
11. ALL DIMENSIONS UNLESS OTHERWISE NOTED ARE TO FACE UNLESS OTHERWISE NOTED.
12. ALL DIMENSIONS UNLESS OTHERWISE NOTED ARE TO FACE UNLESS OTHERWISE NOTED.
13. ALL DIMENSIONS UNLESS OTHERWISE NOTED ARE TO FACE UNLESS OTHERWISE NOTED.
14. ALL DIMENSIONS UNLESS OTHERWISE NOTED ARE TO FACE UNLESS OTHERWISE NOTED.
15. ALL DIMENSIONS UNLESS OTHERWISE NOTED ARE TO FACE UNLESS OTHERWISE NOTED.
16. ALL DIMENSIONS UNLESS OTHERWISE NOTED ARE TO FACE UNLESS OTHERWISE NOTED.
17. ALL DIMENSIONS UNLESS OTHERWISE NOTED ARE TO FACE UNLESS OTHERWISE NOTED.
18. ALL DIMENSIONS UNLESS OTHERWISE NOTED ARE TO FACE UNLESS OTHERWISE NOTED.
19. ALL DIMENSIONS UNLESS OTHERWISE NOTED ARE TO FACE UNLESS OTHERWISE NOTED.
20. ALL DIMENSIONS UNLESS OTHERWISE NOTED ARE TO FACE UNLESS OTHERWISE NOTED.



LEGEND

(D2)	DETAIL OF SECTION IDENTIFICATION
(88)	DETAIL OF SECTION IDENTIFICATION
(100)	PROPOSED ELEVATION
(101)	EXISTING ELEVATION
(102)	SURFACE FLOW DIRECTION

LAST REVISION: 09/20/10
LAST PLOTTED: 09/22/10
DRAWING SCALE: 1"=40'
PLOT SCALE: 1"=1'

REVISION	DATE	DESCRIPTION	BY	APPROVED

ENGINEER OF RECORD:
AL ANDREANSKY, P.E.
FLA. REG. # 39387

DATE SIGNED: _____

CAD FILE: 05071501AB1 SCALE: 1"=40'
DRAWN BY: A.A. DATE: 07-15-09
CHECKED BY: _____ DATE: _____
APPROVED BY: _____ DATE: _____

AL ANDREANSKY, P.E.
P.O. BOX 458
PALM HARBOR, FLORIDA 34882-0458
PHONE: 1727 441-4140, FAX: 1727 789-8888

SITE LAYOUT
COPELAND INDUSTRIAL PARK
ZEPHYRHILLS, FLORIDA

AS-BUILT DRAWINGS
DATE: _____
ENGINEER: _____

PROJECT No.
09071501.001
SHEET
81 of 1

COPELAND INDUSTRIAL PARK READY MIX PLANT, B.E.T. INC., HUDSON, FLORIDA