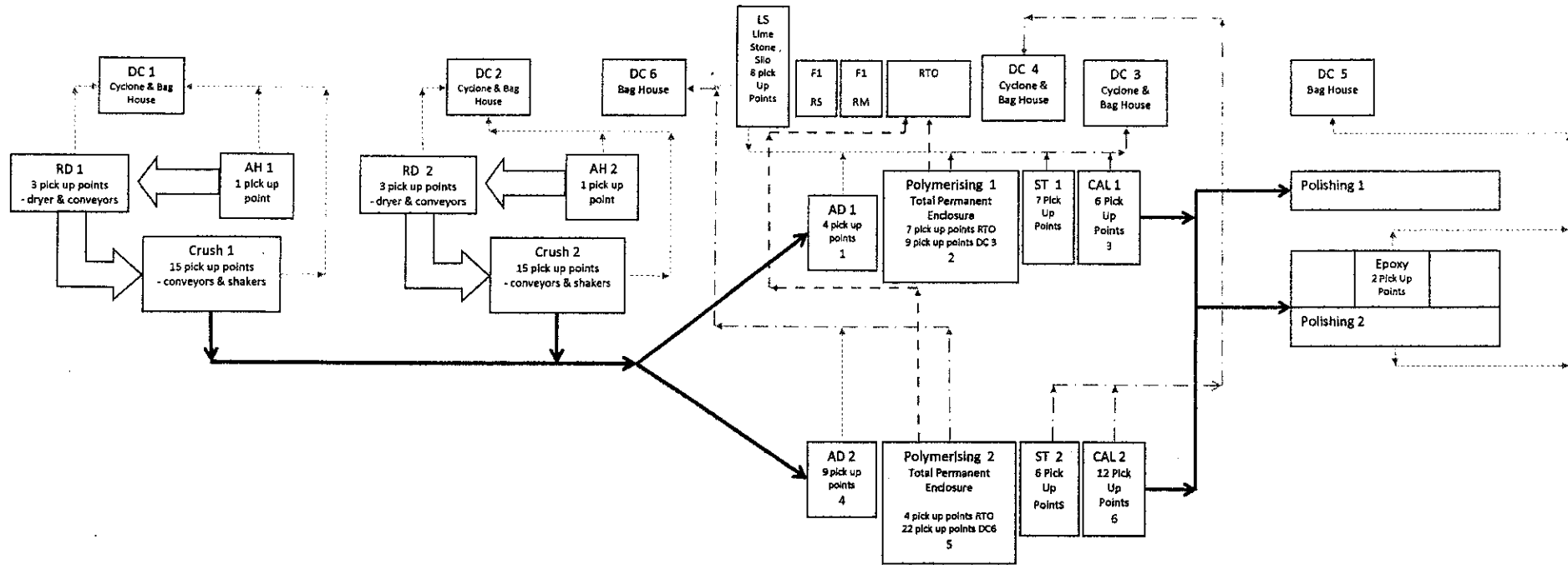


Figure PF
E-Stone USA Corporation
Permit No. 0550049-004-AV

E-Stone USA Corporation
Process Layout
Revised 1-23-08



Emission Unit	Emission Point	Emission Point Description	Equipment Identification	Equipment Description	# of Pick Up Points	Pick Up Point Location	Pick Up Point Internal to PTE	Emission
01	DC 1	Cyclone & Bag House	AH1	Aggregate Hopper #1	1	Hopper	-----	Particulate Matter (PM)
			RD1	Rotary Dryer #1	3	Dryer & Conveyors	-----	Particulate Matter (PM)
			Crush 1	Mill #1	15	Conveyors & Shakers	-----	Particulate Matter (PM)
02	DC 2	Cyclone & Bag House	AH2	Aggregate Hopper #2	1	Hopper	-----	Particulate Matter (PM)
			RD2	Rotary Dryer #2	3	Dryer & Conveyors	-----	Particulate Matter (PM)
			Crush 2	Mill #2	15	Conveyors & Shakers	-----	Particulate Matter (PM)
03	DC 6	Bag House	AD2 (4)	Aggregate Dosing #1	8	Aggregate Dosing	-----	Particulate Matter (PM)
					1	Limestone Conveyor	-----	Particulate Matter (PM)
			Polymerising 2 (5)	Polymerising 2	22	Mixers, Upper Trolley (Loading Area)	Yes	PM & VOC/HAP
04	DC 4	Cyclone & Bag House	ST 2	Slab Take Off Area	6	Slab Take Off Area	-----	Particulate Matter (PM)
			CAL 2 (6)	Calibrator 2	12	Calibrator	-----	Particulate Matter (PM)
							-----	Particulate Matter (PM)
05	DC3	Cyclone & Bag House	LS	Limestone Silo	8	Conveyors & Hopper	-----	Particulate Matter (PM)
			ST 1	Slab Take Off Area	7	Slab Take Off Area	-----	Particulate Matter (PM)
			AD 1 (1)	Aggregate Dosing 1	4	Aggregate Dosing	-----	Particulate Matter (PM)
			Polymerising 1	Polymerising 1	9	Upper oven, mixers, limestone hopper, conveyors	Yes	PM & VOC/HAP
							Yes	PM & VOC/HAP
			CAL 1 (3)	Calibrator 1	6	Calibrator	-----	Particulate Matter (PM)
06	RTO	Regenerative Thermal Oxidizer	Polymerising 1 (2)	Polymerising 1	1	Robot Station	Yes	PM & VOC/HAP
					2	Limestone & Fiberglass Station	Yes	PM & VOC/HAP
					4	Upper Trolley System (load area)	Yes	PM & VOC/HAP
			Polymerising 2	Polymerising 2	1	Limestone Station	Yes	PM & VOC/HAP
					1	Fiberglass Station	Yes	PM & VOC/HAP
					2	Robot Station	Yes	PM & VOC/HAP
07	DC 5	Bag House	Polishing 2	Polishing 2	4	Edge Grinding Booth	Yes	Particulate Matter (PM)
			Epoxy	Epoxy Touch Up	2	Epoxy Touch Up	Yes	Epoxy Odor
08	F1	Fugitive Emission	RS	Resin Storage	0		Yes	VOC/HAP
			RM	Resin Mix Tanks	0		Yes	VOC/HAP

Key

