

ENVIRONMENTAL PROTECTION

COMMISSION

JAN PLATT CHAIRMAN

JERRY BOWMER VICE CHAIRMAN

CHARLES F. BEAN III. SECRETARY

ROBERT E. CURRY

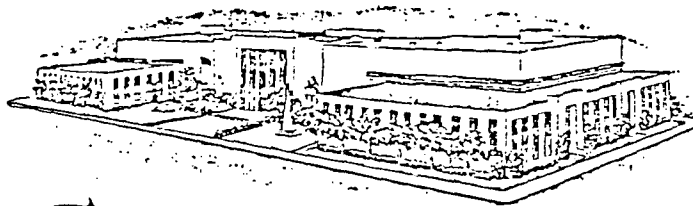
FRANCES M. DAVIN

*File*

ROGER P. STEWART  
DIRECTOR

1900 - 9th AVE.  
TAMPA, FLORIDA 33605

TELEPHONE (813) 272-5960



COUNTY of HILLSBOROUGH

Tampa, Florida 33601



July 23, 1979

Mr. A. E. Morrison  
Superintendent, Environmental and Chemical Services  
Le Gardinier, Inc.  
P. O. Box 3269  
Tampa, Florida 33601

Re: Suitability of certain areas of Gardinier's  
property for industrial use.

Dear Mr. Morrison:

The areas outlined on the attached aerial photograph are tidal waters of Hillsborough Bay and Archie Creek. As such, these areas are "Waters of Hillsborough County", and are under the jurisdiction of the Hillsborough County Environmental Protection Commission. These areas are ecologically important and would not be suitable for industrial use.

Sincerely,

*Richard G. Wilkins*

Richard G. Wilkins  
Senior Environmental Scientist  
Hillsborough County Environmental  
Protection Commission

RGW/fd

w/enclosure

ORIG To John Chambers, 7/30/79, @

G-29

BEST AVAILABLE COPY

CANAL - 4 1/2 ACRES

A.C.L. Railroad

U.S. H'way 41

Old H'way 41

East Bay Raceway

Hlsbro Bay

87 ACRES

SECTION 10

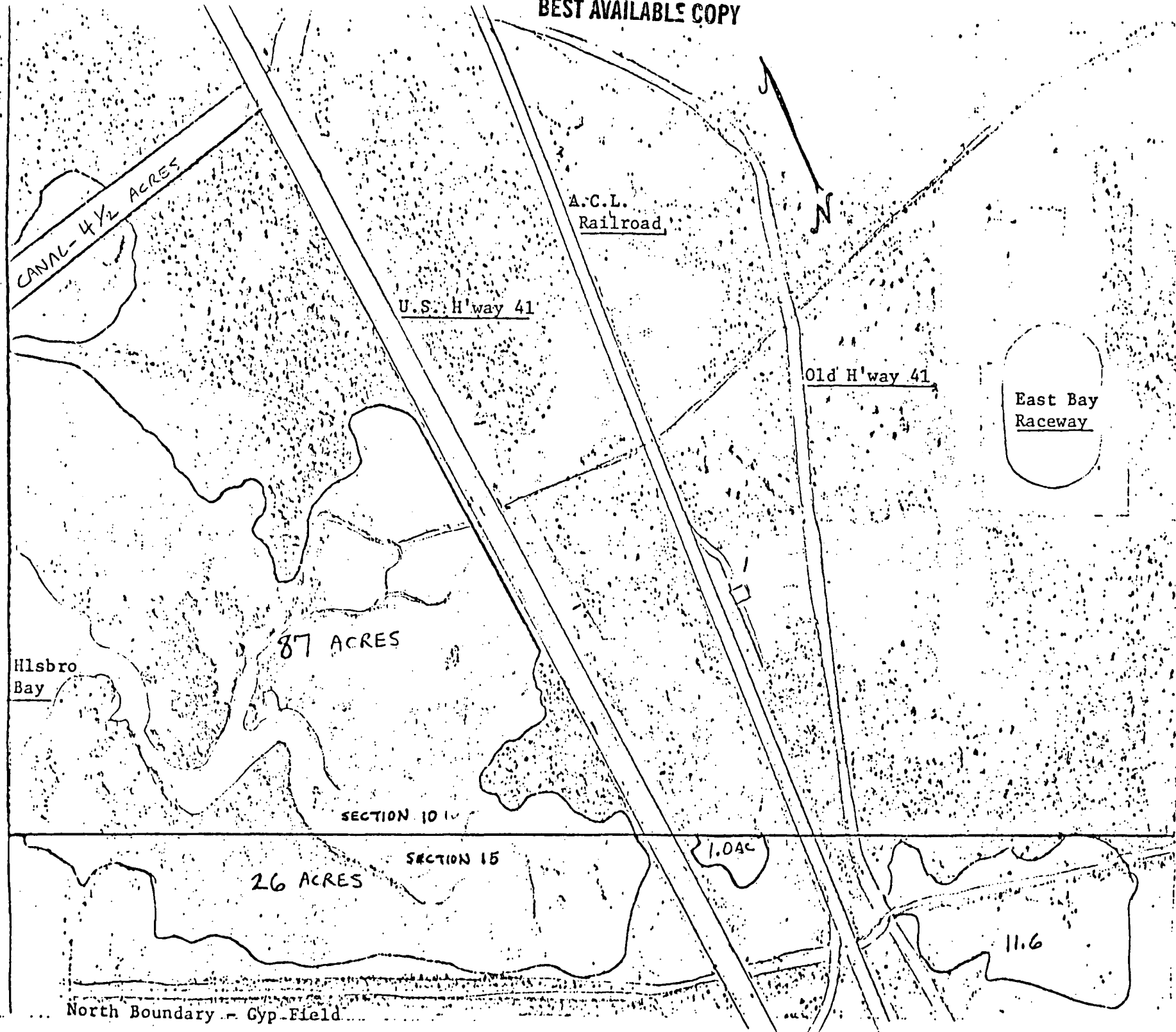
SECTION 15

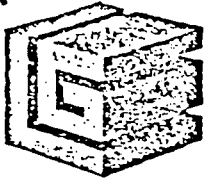
26 ACRES

1.0 AC

11.6

North Boundary - Gyp Field





# GARDINIER INC.

Post Office Box 3269

Tampa, Florida 33601

Telephone 813-677-9111

TWX 810-876-0648

Telex-52666

Cable-Gardiphos

July 20, 1979

Mr. Chris Dunn, Environmental Engineer  
Hillsborough County Environmental Protection Commission  
1900 9th Avenue  
Tampa, Florida 33605

Dear Mr. Dunn:

Gardiner, Inc., desires to determine if lands which it owns adjacent to its E. Tampa plant would be suitable for industrial use. A description of the location of these lands is given below, and an aerial photograph is attached.

The property in question is located as follows:

Section 15, Township 30, Range 19

(See aerial photo).

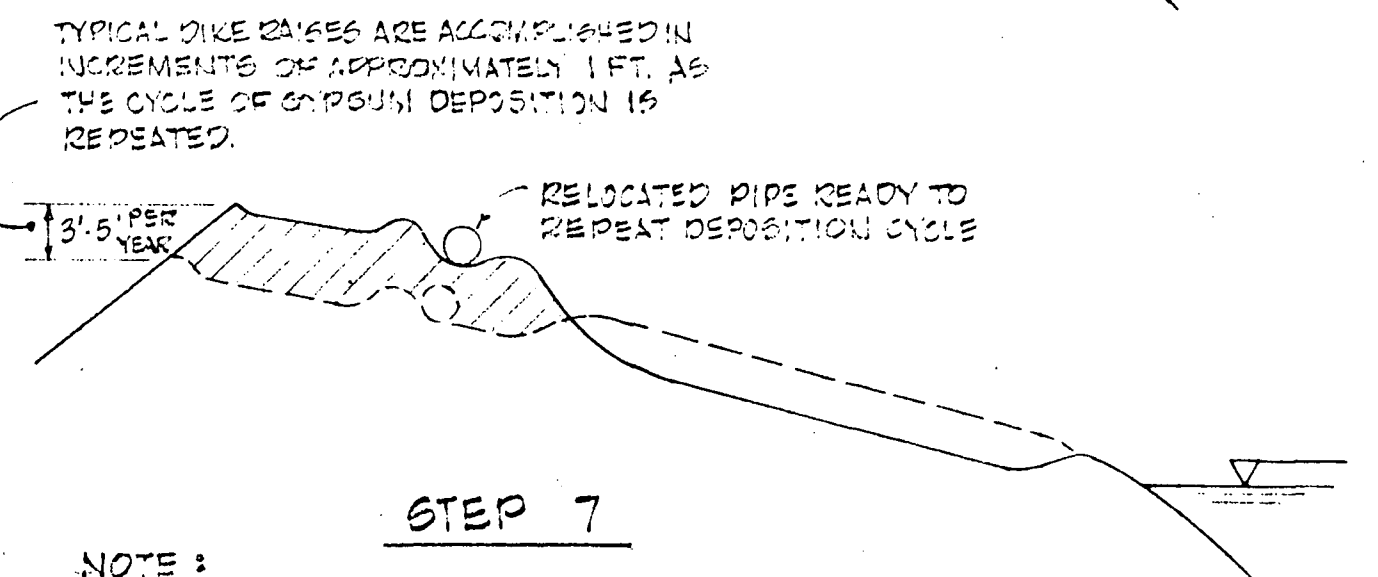
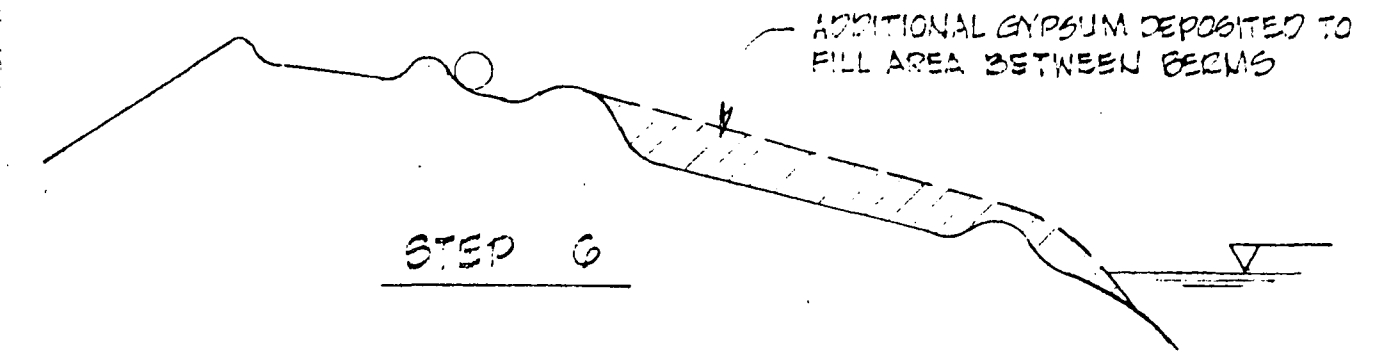
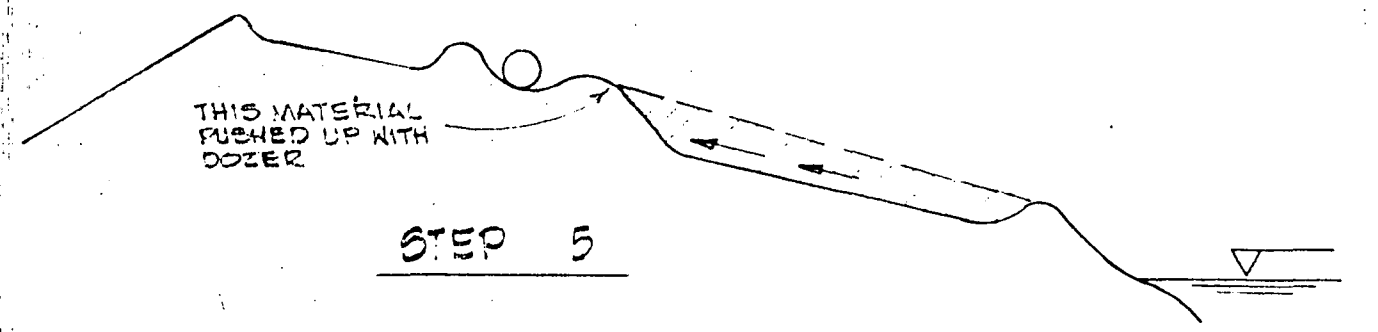
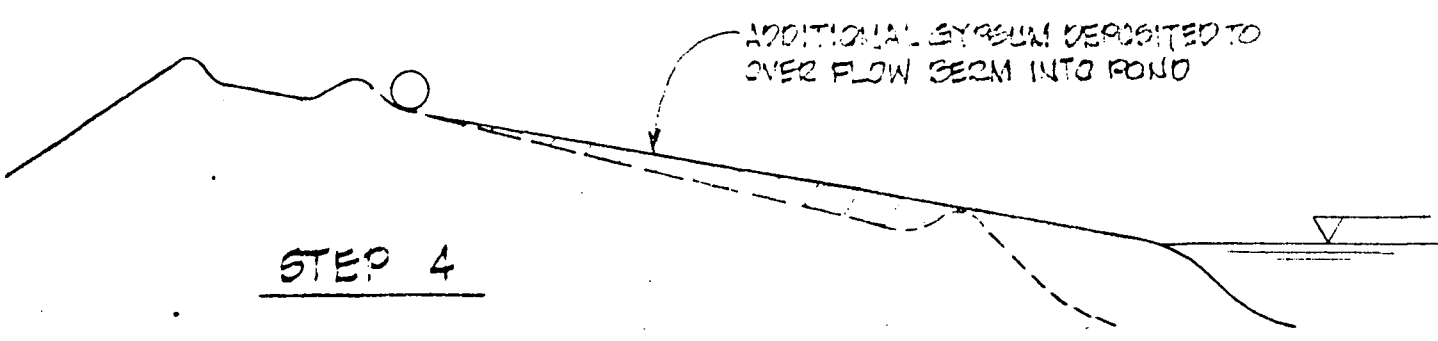
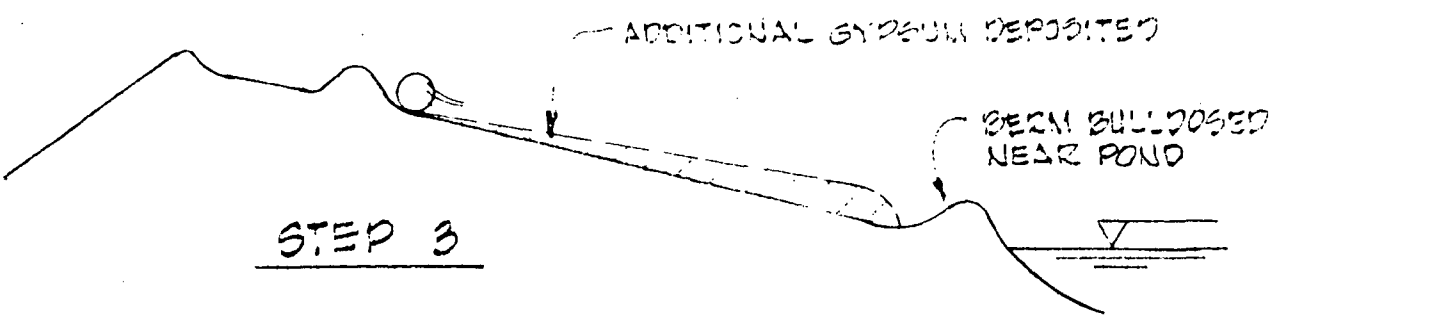
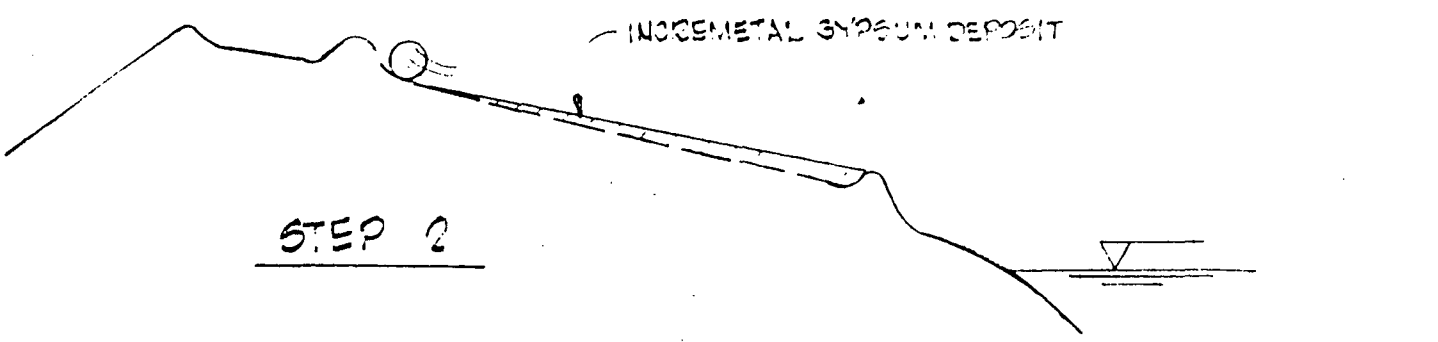
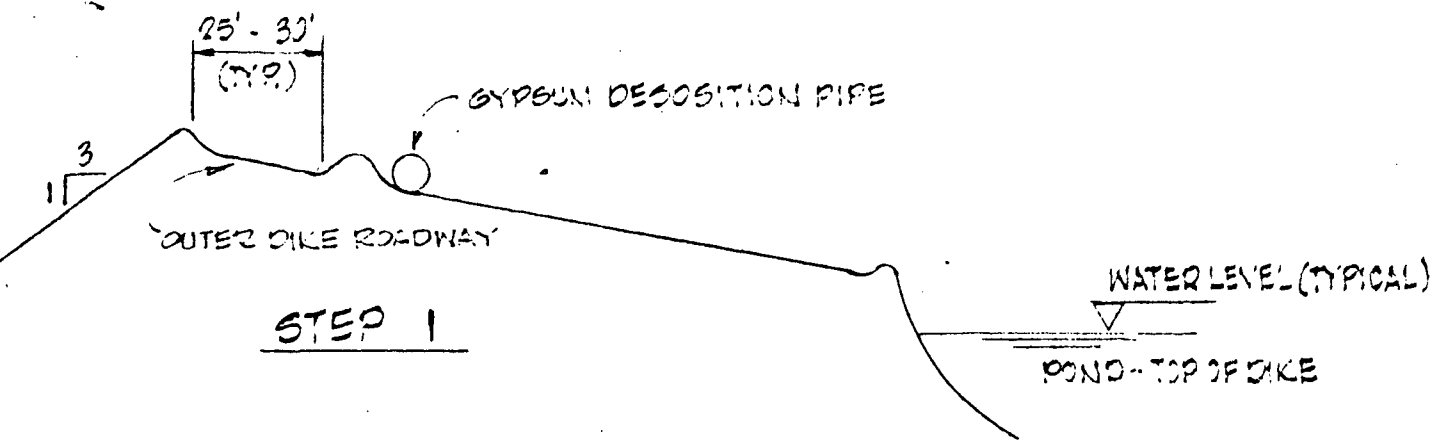
Section 10, Township 30, Range 19

If you have any questions concerning this matter, please contact me.

Very truly yours,

A.E. Morrison, Superintendent  
Env. & Chem. Services

xc: Mr. Chambers  
Mr. Cabina



**NOTE :**  
PERIPHERAL DEPOSITION PIPE DEPOSITS GYPSUM ON THE SHALLOW SLOPE. DEPOSITS ARE 6-10 IN. DEEP. AS MATERIAL ACCUMULATES IT IS MOVED BY BULLDOZED INTO BERMS AS SHOWN ABOVE. AS GYPSUM ACCUMULATES AND THE DIKE IS GRADUALLY RAISED, THE DEPOSITION PIPE IS ALSO RELOCATED. THE TIME INCREMENT BETWEEN STEPS IS APPROXIMATELY 1 WEEK.

STEPS 1 THRU 7 SHOW START UP SEQUENCE FOR PERIPHERAL DEPOSITS TO ESTABLISH BEACH THRU ONE INCREMENTAL DIKE RAISE

**TYPICAL DIKE RAISE CYCLE**  
NEW GYPSUM STORAGE