



1601 Belvedere Road, Suite 211 South
West Palm Beach, Florida 33406
tel: 561 689-3336
fax: 561 689-9713

RECEIVED

FEB 11 2008

BUREAU OF AIR REGULATION

February 7, 2008

Mr. Alvaro Linero, P.E.
Bureau of Air Regulation
Florida Department of Environmental Protection
2600 Blair Stone Road
Tallahassee, Florida 32399-2400

Subject: Solid Waste Authority of Palm Beach County
North County Resource Recovery Facility Site
Biosolids Pelletization Facility
Time Extension Request for Air Construction Permit (Permit No. 0990234-008-AC)

Dear Mr. Linero:

This letter is in reference to FDEP Air Construction Permit Number 0990234 and PSD-FL-108F for the construction of a Biosolids Pelletization Facility (BPF) at the North County Resource Recovery Facility Site. The air pollution construction permit for the BPF has an expiration date of March 31, 2008. At this time, the construction of the facility is not completed. The contractor's current construction schedule indicates that construction should be completed by December 1, 2008, copy attached. On behalf of the Solid Waste Authority, CDM hereby requests a one-year extension of the air pollution construction permit for the BPF.

Additionally, no design or construction changes have occurred to date that would effect the air emissions calculations or the Best Available Control Technology analysis previously submitted.

We would be happy to provide any additional information you may need to process this request. Please contact me at any time with such requests at (561) 689-3336 or barrittam@cdm.com.

Very truly yours,

Amber M. Barritt

Amber M. Barritt, P.E.
Project Manager
Camp Dresser & McKee Inc.

Mr. Alvaro Linero, P.E.
February 7, 2008
Page 2

Enclosure

c: Mike Halpin, P.E., FDEP, Florida Energy Office
Cindy Mulkey, FDEP, Florida Energy Office
Russell Wider, FDEP, Bureau of Air Regulation
Lee Hoefert, FDEP, Southeast District
John O'Malley, PBC Health Department
Ray Schauer, SWA
Patrick Carroll, SWA
Mary Beth Morrison, SWA
Kevin Leo, P.E., BCEE, CDM
Alex Makled, P.E., BCEE, CDM
Jill Grimaldi, CDM
Cynthia Hibbard, CDM

File: 2678-46715-079

Activity ID	Activity Description	Rem/Total Dur Float	Early Start	Early Finish	2008												2009												2010														
					JAN	FEB	MAR	APR	MAY	JUN	JUL	AUG	SEP	OCT	NOV	DEC	JAN	FEB	MAR	APR	MAY	JUN	JUL	AUG	SEP	OCT	NOV	DEC	JAN	FEB	MAR	APR											
DESIGN																																											
36200	Close-Out Submittals	76 -145	80	02APR07A	25SEP08	Close-Out Submittals																																					
36500	Compile Record Drawings	25 -145	10	02APR07A	23SEP08	Compile Record Drawings																																					
36300	Compile O&M Manuals	30 -157	0	10JUN08	22JUL08	Compile O&M Manuals																																					
48800	Compile Testing Plan	10 -157	0	10JUN08	23JUN08	Compile Testing Plan																																					
48900	Deliver Testing Plan	2 -157	0	24JUN08	25JUN08	Deliver Testing Plan																																					
36400	Deliver O&M Manuals	2 -101	0	23JUL08	24JUL08	Deliver O&M Manuals																																					
36600	Deliver Record Drawings	2 -145	0	24SEP08	25SEP08	Deliver Record Drawings																																					
49000	Certificate of Readiness	0 -145	0		25SEP08	Certificate of Readiness																																					
PROCUREMENT																																											
34200	PO 11.1 Conveyors, Bins, & Hopper Equipment	157 -150	96	10AUG05A	20FEB08	PO 11.1 Conveyors, Bins, & Hopper Equipment																																					
34500	Review Shop Drawings	1 -143	83	11AUG06A	31JAN08	Review Shop Drawings																																					
34700	Manufacture Equipment	10 -150	53	27AUG07A	13FEB08	Manufacture Equipment																																					
34800	Return Shop Drawings to Vendor	2 -143	0	01FEB08	04FEB08	Return Shop Drawings to Vendor																																					
34510	Develop O&M Manuals(inc spare parts list)	10 -88	0	05FEB08	18FEB08	Develop O&M Manuals(inc spare parts list)																																					
34800	Deliver Equipment	5 -150	0	14FEB08	20FEB08	Deliver Equipment																																					
34820	Approve O&M Manuals(inc spare parts list)	10 -88	0	19FEB08	03MAR08	Approve O&M Manuals(inc spare parts list)																																					
34900	PO 11.2 Product Storage Silos	47 -168	83	10SEP05A	04APR08	PO 11.2 Product Storage Silos																																					
35310	Develop O&M Manuals(inc spare parts list)	20 -162	33	17OCT07A	27FEB08	Develop O&M Manuals(inc spare parts list)																																					
35400	Manufacture Equipment	42 -168	30	17OCT07A	28MAR08	Manufacture Equipment																																					
35320	Approve O&M Manuals(inc spare parts list)	15 -162	0	28FEB08	19MAR08	Approve O&M Manuals(inc spare parts list)																																					
35500	Deliver Equipment	5 -169	0	31MAR08	04APR08	Deliver Equipment																																					
50000	PO 11.3 Dust Control Oil Tank	45 -140	93	12SEP05A	02APR08	PO 11.3 Dust Control Oil Tank																																					
50500	Manufacture Equipment	15 -115	80	10JUN07A	20FEB08	Manufacture Equipment																																					
50180	Vendor Recommendation	0 -23	0		30JAN08	Vendor Recommendation																																					
50410	Develop O&M Manuals(inc spare parts list)	25 -140	0	31JAN08	05MAR08	Develop O&M Manuals(inc spare parts list)																																					
50420	Approve O&M Manuals(inc spare parts list)	15 -140	0	06MAR08	28MAR08	Approve O&M Manuals(inc spare parts list)																																					
50600	Deliver Equipment	5 -140	0	27MAR08	02APR08	Deliver Equipment																																					
50700	PO 11.4 Dust Control Oil Pump	27 -187	87	12SEP05A	08JUN08	PO 11.4 Dust Control Oil Pump																																					
50820	Vendor Recommendation	0 -100				Vendor Recommendation																																					
50840	NEFCO Approval	0 -100				NEFCO Approval																																					
50860	Execute P.O. Agreement	10 -187	0	31JAN08	13FEB08	Execute P.O. Agreement																																					
50900	Develop Shop Drawings	30 -187	0	14FEB08	26MAR08	Develop Shop Drawings																																					
51000	Review Shop Drawings	15 -187	0	27MAR08	16APR08	Review Shop Drawings																																					
Start Date	21JAN08	Early Bar	WP24	NEFCO-HDR-TURNER Jan 31, 08 Update																																				Start Date			
Finish Date	02DEC08	Target Bar		PBC-SWA BIOSOLIDS PROCESS FACILITY																																				Finish Date			
Due Date	31JAN08	Progress Bar		Remaining Schedule by Phase of Work																																				Due Date			
Run Date	24FEB08 9:05	Critical Activity																																						Run Date			

Activity ID	Activity Description	Rem/Dur	Total/Plant	%	Early Start	Early Finish	2008												2009																		
							JAN	FEB	MAR	APR	MAY	JUN	JUL	AUG	SEP	OCT	NOV	DEC	JAN	FEB	MAR	APR	MAY	JUN	JUL	AUG	SEP	OCT	NOV	DEC							
51100	Return Shop Drawings to vendor	2	-187	0	17APR08	18APR08																				Return Shop Drawings to vendor											
51110	Develop O&M Manuals(inc. spare parts list)	25	-134	0	21APR08	23MAY08																				Develop O&M Manuals(inc. spare parts list)											
51300	Manufacture Equipment	30	-187	0	21APR08	02JUN08																				Manufacture Equipment											
51170	Approve O&M Manuals(inc. spare parts list)	15	-134	0	28MAY08	18JUN08																				Approve O&M Manuals(inc. spare parts list)											
51400	Deliver Equipment	5	-187	0	03JUN08	08JUN08																				Deliver Equipment											
51800	Review Shop Drawings	2	21	67	07FEB08A	01FEB08																				Review Shop Drawings											
51800	Return Shop Drawings to vendor	2	-62	0	18NOV08A	01FEB08																				Return Shop Drawings to vendor											
52000	Manufacture Equipment	20	-188	73	22DEC08A	27FEB08																				Manufacture Equipment											
52180	Deliver Cyclones	5	-63	0	30NOV07A	08FEB08																				Deliver Cyclones											
52220	Deliver Cyclone-Fan SS Duct	5	-63	0	31JAN08	08FEB08																				Deliver Cyclone-Fan SS Duct											
52240	Deliver Drum-Cyclone Steel Duct	5	-63	0	31JAN08	08FEB08																				Deliver Drum-Cyclone Steel Duct											
51810	Develop O&M Manuals(inc. spare parts list)	10	-62	0	04FEB08	15FEB08																				Develop O&M Manuals(inc. spare parts list)											
51820	Approve O&M Manuals(inc. spare parts list)	15	-62	0	18FEB08	07MAR08																				Approve O&M Manuals(inc. spare parts list)											
52140	Deliver Burners	5	-188	0	28FEB08	05MAR08																				Deliver Burners											
52180	Deliver Induced Draft Fans	4	-187	0	28FEB08	04MAR08																				Deliver Induced Draft Fans											
52280	Deliver Control Panels	10	-158	0	28FEB08	12MAR08																				Deliver Control Panels											
52620	Approve O&M Manuals(inc. spare parts list)	15	-60	0	31JAN08	20FEB08																				Approve O&M Manuals(inc. spare parts list)											
52600	PO 11.7 Crusher Equipment	17	-108	86	13AUG08A	18FEB08																				PO 11.7 Crusher Equipment											
53310	Develop O&M Manuals(inc. spare parts list)	10	-60	60	20AUG07A	13FEB08																				Develop O&M Manuals(inc. spare parts list)											
53400	Manufacture Equipment	8	-108	88	20AUG07A	11FEB08																				Manufacture Equipment											
53500	Deliver Equipment	5	-108	0	12FEB08	18FEB08																				Deliver Equipment											
53320	Approve O&M Manuals(inc. spare parts list)	15	-60	0	14FEB08	05MAR08																				Approve O&M Manuals(inc. spare parts list)											
53720	Vendor Recommendation	0	23	0	30JAN08																					Vendor Recommendation											
54010	Develop O&M Manuals(inc. spare parts list)	30	-110	0	31JAN08	12MAR08																				Develop O&M Manuals(inc. spare parts list)											
54020	Approve O&M Manuals(inc. spare parts list)	15	-110	0	13MAR08	02APR08																				Approve O&M Manuals(inc. spare parts list)											
54170	Approve O&M Manuals(inc. spare parts list)	15	-60	0	04SEP07A	20FEB08																				Approve O&M Manuals(inc. spare parts list)											
55410	Develop O&M Manuals(inc. spare parts list)	10	-60	80	08AUG07A	13FEB08																				Develop O&M Manuals(inc. spare parts list)											
55420	Approve O&M Manuals(inc. spare parts list)	15	-60	0	14FEB08	05MAR08																				Approve O&M Manuals(inc. spare parts list)											
55700	PO 11.11 Cooling Tower	11	-60	98	12SEP05A	14FEB08																				PO 11.11 Cooling Tower											
56200	Manufacture Equipment	6	-60	92	11OCT07A	07FEB08																				Manufacture Equipment											
55620	Vendor Recommendation	0	23	0	30JAN08																					Vendor Recommendation											
58110	Develop O&M Manuals(inc. spare parts list)	25	-105	0	31JAN08	05MAR08																				Develop O&M Manuals(inc. spare parts list)											

Start Date	01JAN08	01DEC08	01NOV08	04FEB08 18:00	01MAY08	01MAY08
Plan Date						
Curr Date						
Run Date						

Sheet: 1 of 16
 SHEET TITLE:

DATE: 04FEB08 18:00

STATUS: Entry Est Prep Est Create Actual

WPC1

NEFCO-HDR-TURNER Jan 31, 08 Update

PBC-SWA BIOSOLIDS PROCESS FACILITY

Remaining Schedule by Phase of Work

Sheet #	Phase	Change	Input

Activity ID	Activity Description	Rem. Total Dur (Hrs)	Total %	Early Start	Early Finish	2008												2009			
						JAN	FEB	MAR	APR	MAY	JUN	JUL	AUG	SEP	OCT	NOV	DEC	JAN	FEB	MAR	APR
56300	Deliver Equipment	5 - 40	0	09FEB08	14FEB08													✓ Deliver Equipment			
56120	Approve O&M Manuals(inc. spare parts list)	15 - 108	0	08MAR08	20MAR08													✓ Approve O&M Manuals(inc. spare parts list)			
56400	PO 11.12 Cooling Tower Pumps	137 - 178	81	19SEP05A	12AUG08													✓ PO 11.12 Cooling Tower Pumps			
56520	Vendor Recommendation	0 - 23	0	30JAN08														✓ Vendor Recommendation			
56540	NEFCO Approval	5 - 178	0	31JAN08	06FEB08													✓ NEFCO Approval			
56560	Execute P.O. Agreement	10 - 178	0	07FEB08	20FEB08													✓ Execute P.O. Agreement			
56600	Develop Shop Drawings	30 - 178	0	21FEB08	02APR08													✓ Develop Shop Drawings			
56700	Review Shop Drawings	15 - 178	0	03APR08	23APR08													✓ Review Shop Drawings			
56800	Return Shop Drawings to Vendor	2 - 178	0	24APR08	25APR08													✓ Return Shop Drawings to Vendor			
56810	Develop O&M Manuals(inc. spare parts list)	30 - 144	0	28APR08	08JUN08													✓ Develop O&M Manuals(inc. spare parts list)			
56820	Manufacture Equipment	70 - 178	0	28APR08	05AUG08													✓ Manufacture Equipment			
56830	Approve O&M Manuals(inc. spare parts list)	15 - 144	0	10JUN08	30JUN08													✓ Approve O&M Manuals(inc. spare parts list)			
57000	Deliver Equipment	5 - 178	0	06AUG08	12AUG08													✓ Deliver Equipment			
57100	PO 11.13 Condenser Venturi Pump	122 - 147	83	12SEP05A	22JUL08													✓ PO 11.13 Condenser Venturi Pump			
57200	Vendor Recommendation	0 - 23	0	30JAN08														✓ Vendor Recommendation			
57240	NEFCO Approval	5 - 147	0	31JAN08	06FEB08													✓ NEFCO Approval			
57260	Execute P.O. Agreement	10 - 147	0	07FEB08	20FEB08													✓ Execute P.O. Agreement			
57300	Develop Shop Drawings	30 - 147	0	31FEB08	02APR08													✓ Develop Shop Drawings			
57400	Review Shop Drawings	15 - 147	0	03APR08	23APR08													✓ Review Shop Drawings			
57500	Return Shop Drawings to Vendor	2 - 147	0	24APR08	25APR08													✓ Return Shop Drawings to Vendor			
57510	Develop O&M Manuals(inc. spare parts list)	30 - 142	0	28APR08	08JUN08													✓ Develop O&M Manuals(inc. spare parts list)			
57600	Manufacture Equipment	55 - 147	0	28APR08	15JUL08													✓ Manufacture Equipment			
57820	Approve O&M Manuals(inc. spare parts list)	15 - 142	0	10JUN08	30JUN08													✓ Approve O&M Manuals(inc. spare parts list)			
57700	Deliver Equipment	5 - 147	0	18JUL08	22JUL08													✓ Deliver Equipment			
57800	PO 11.14 Heat Exchangers	97 - 170	86	13SEP05A	11JUN08													✓ PO 11.14 Heat Exchangers			
57960	Execute P.O. Agreement	10 - 170	0	18OCT06A	13FEB08													✓ Execute P.O. Agreement			
57920	Vendor Recommendation	0 - 23	0	30JAN08														✓ Vendor Recommendation			
57940	NEFCO Approval	5 - 18	0	31JAN08	06FEB08													✓ NEFCO Approval			
58300	Manufacture Equipment	80 - 138	20	31JAN08	23APR08													✓ Manufacture Equipment			
58000	Develop Shop Drawings	25 - 170	0	14FEB08	19MAR08													✓ Develop Shop Drawings			
58100	Review Shop Drawings	15 - 170	0	20MAR08	08APR08													✓ Review Shop Drawings			
58200	Return Shop Drawings to Vendor	2 - 170	0	10APR08	11APR08													✓ Return Shop Drawings to Vendor			
58210	Develop O&M Manuals(inc. spare parts list)	25 - 170	0	14APR08	16MAY08													✓ Develop O&M Manuals(inc. spare parts list)			
58220	Approve O&M Manuals(inc. spare parts list)	15 - 170	0	19MAY08	08JUN08													✓ Approve O&M Manuals(inc. spare parts list)			

Start Date	01JAN08	Early Bar	WP24	NEFCO-HDR-TURNER Jan 31, 08 Update PBC-SWA BIOSOLIDS PROCESS FACILITY Remaning Schedule by Phase of Work	Sheet 3 of 12					
Finish Date	31DEC08	% of Bar			Date	Reason	Entered	Approved		
Date Due	31JAN08	Progress Bar								
Run Date	04FEB08 19:05	Critical Activity								

Activity ID	Activity Description	Pm/Total Dur	Total %	Early Start	Early Finish	2008												2009																	
						JAN	FEB	MAR	APR	MAY	JUN	JUL	AUG	SEP	OCT	NOV	DEC	JAN	FEB	MAR	APR	MAY	JUN	JUL	AUG	SEP	OCT	NOV	DEC	JAN	FEB	MAR	APR	MAY	JUN
55400	Deliver Equipment	5-170	0	10JUN08	16JUN08	Deliver Equipment																													
58500	PO 11.15 Building Scrubbers	57-163	91	18SEP08A	18APR09	PO 11.15 Building Scrubbers																													
58810	Develop O&M Manuals(inc. spare parts list)	19-99	37	01OCT07A	26FEB08	Develop O&M Manuals(inc. spare parts list)																													
59000	Manufacture Equipment	52-163	31	01OCT07A	11APR08	Manufacture Equipment																													
59200	Approve O&M Manuals(inc. spare parts list)	15-99	0	27FEB08	18MAR08	Approve O&M Manuals(inc. spare parts list)																													
59100	Deliver Equipment	5-163	0	14APR08	18APR08	Deliver Equipment																													
59200	PO 11.16 Chemical Feed Pumps	67-184	87	12SEP08A	02JUN09	PO 11.16 Chemical Feed Pumps																													
59320	Vendor Recommendation	0-23	0		30JAN08	Vendor Recommendation																													
59340	NEPCO Approval	5-184	0	31JAN08	06FEB08	NEPCO Approval																													
59360	Erectify P.O. Agreement	5-184	0	07FEB08	13FEB08	Erectify P.O. Agreement																													
59400	Develop Shop Drawings	30-184	0	14FEB08	26MAR08	Develop Shop Drawings																													
59500	Review Shop Drawings	10-184	0	27MAR08	08APR08	Review Shop Drawings																													
59800	Return Shop Drawings to Vendor	2-184	0	10APR08	11APR08	Return Shop Drawings to Vendor																													
59610	Develop O&M Manuals(inc. spare parts list)	30-132	0	14APR08	23MAY08	Develop O&M Manuals(inc. spare parts list)																													
59700	Manufacture Equipment	30-184	0	14APR08	23MAY08	Manufacture Equipment																													
59920	Approve O&M Manuals(inc. spare parts list)	15-132	0	28MAY08	16JUN08	Approve O&M Manuals(inc. spare parts list)																													
59900	Deliver Equipment	5-184	0	28MAY08	02JUN08	Deliver Equipment																													
60600	PO 11.17 RTD	72-159	80	08AUG08A	09MAY09	PO 11.17 RTD																													
60300	Review Resubmittal	5-159	87	14DEC07A	06FEB08	Review Resubmittal																													
60310	Develop O&M Manuals(inc. spare parts list)	30-137	0	31JAN08	12MAR08	Develop O&M Manuals(inc. spare parts list)																													
60300	Return Resubmittal	2-159	0	07FEB08	06FEB08	Return Resubmittal																													
60400	Manufacture Equipment	80-159	0	11FEB08	02MAY09	Manufacture Equipment																													
60320	Approve O&M Manuals(inc. spare parts list)	15-137	0	13MAR08	03APR08	Approve O&M Manuals(inc. spare parts list)																													
60500	Deliver Equipment	5-159	0	02MAY08	09MAY08	Deliver Equipment																													
61010	Develop O&M Manuals(inc. spare parts list)	15-95	0	31JAN08	20FEB08	Develop O&M Manuals(inc. spare parts list)																													
61020	Approve O&M Manuals(inc. spare parts list)	15-95	0	21FEB08	12MAR08	Approve O&M Manuals(inc. spare parts list)																													
61710	Develop O&M Manuals(inc. spare parts list)	20-100	0	11JAN07A	21FEB08	Develop O&M Manuals(inc. spare parts list)																													
61720	Approve O&M Manuals(inc. spare parts list)	15-100	0	28FEB08	10MAR08	Approve O&M Manuals(inc. spare parts list)																													
62700	PO 11.21 Polymer Feed System	92-188	87	12SEP08A	08JUN09	PO 11.21 Polymer Feed System																													
62900	Develop Shop Drawings	10-188	87	14NOV07A	13FEB08	Develop Shop Drawings																													
63000	Review Shop Drawings	15-188	0	14FEB08	02MAR08	Review Shop Drawings																													
63100	Return Shop Drawings to Vendor	2-188	0	02MAR08	07MAR08	Return Shop Drawings to Vendor																													

Start Date	01JAN08
Finish Date	31DEC08
Out Date	31JAN08
Print Date	04FEB08 16:25

Legend	<input type="checkbox"/> Early Bar <input type="checkbox"/> Target Bar <input type="checkbox"/> Progress Bar <input type="checkbox"/> Critical Activity
--------	--

WPIZ
 NEFCO-HDR-TURNER Jan 31, 08 Update
 PBC-SWA BIOSOLIDS PROCESS FACILITY
 Resourcing Schedule by Phase of Work

Sheet 4 of 10	Date	Revision	Checked	Approved

					2008												2009											
					JAN	FEB	MAR	APR	MAY	JUN	JUL	AUG	SEP	OCT	NOV	DEC	JAN	FEB	MAR	APR	MAY	JUN	JUL	AUG	SEP	OCT	NOV	DEC
83110	Develop O&M Manuals(inc spare parts list)	25	-132	0	10MAR08																							
83200	Manufacture Equipment	80	-188	0	10MAR08																							
83120	Approve O&M Manuals(inc spare parts list)	15	-132	0	14APR08																							
83300	Deliver Equipment	5	-188	0	03JUN08																							

83310	SC 01 Electrical/MCC	85	-98	0	26NOV08A																							
83410	Develop I&C Shop Drawings	15	-8	0	01MAY07A																							
83420	Review I&C Shop Drawings	15	-150	0	03DEC07A																							
83380	Manufacture Equipment	60	-191	0	23JAN08A																							
83400	Deliver Elect Appurt Shop Drawings	10	-158	0	31JAN08																							
83430	Return I&C Shop Drawings	2	-150	0	21FEB08																							
83440	Manufacture I&C Equipment	30	-85	0	25FEB08																							
83480	Develop O&M Manuals(inc spare parts list)	1	-150	0	25FEB08																							
83470	Approve O&M Manuals(inc spare parts list)	1	-150	0	26FEB08																							
83450	Deliver I&C Equipment	5	-85	0	07APR08																							
83385	Deliver Equipment and MCC	5	-191	0	24APR08																							

CONSTRUCTION																																
38110	Drainage Pipe	15	-117	0	16APR08																											
38120	Sanitary Pipe	10	-117	0	07MAY08																											
38130	Final Grading	15	-117	0	21MAY08																											
37700	Final Sitework & Landscaping	48	-117	0	12JUN08																											
37800	Fencing & Gates	15	-117	0	12JUN08																											
37800	Roads & Paving	15	-117	0	03JUL08																											
38000	Sidewalks	5	-117	0	21JUL08																											
38100	Landscaping	20	-117	0	21JUL08																											

38200	Foundations / Misc Concrete	17	-178	0	02MAY07A																							
38400	Recv. Area Walls / Footings & Foundations Elev.	1	-179	83	02MAY07A																							
38507	Storage Area Walls	32	-187	20	22FEB08A																							
38621	Topping Mezzanine	3	-138	0	31JAN08																							
38800	Hollow Core	3	-178	0	12FEB08																							
38800	Building Scrubber Foundation	15	-117	0	26MAR08																							
38983	Roof Topping	10	-187	0	26MAR08																							
38820	Cooling Tower Foundation	8	-188	0	28MAR08																							
38830	RTO Foundation	10	-189	0	01APR08																							
38610	Chemical Storage Foundation	12	-189	0	03APR08																							
38450	Filler @ Storage Bins	20	-187	0	04APR08																							

Start Date	01JAN08	W P24	NEPCO-HDR-TURNER Jan 31, 08 Update	Sheet 5 of 10
Finish Date	01DEC08	NEPCO-HDR-TURNER Jan 31, 08 Update	P&C-SWA BIOSOLIDS PROCESS FACILITY	
Date Date	21JAN08	NEPCO-HDR-TURNER Jan 31, 08 Update	Remaining Schedule by Phase of Work	
Run Date	04FEB08 18:05			

Activity ID	Activity Description	Rem. Total Dur. (Days)	% Complete	Early Start	Early Finish	2008																							
						JAN	FEB	MAR	APR	MAY	JUN	JUL	AUG	SEP	OCT	NOV	DEC	JAN	FEB	MAR	APR	MAY	JUN	JUL	AUG	SEP	OCT	NOV	DEC
38840	Site/Scale Foundation	20-189	0	07APR08	02MAY08	Site/Scale Foundation																							
39000	CMU Masonry Walls (Summary)	81-189	85	01NOV07	11FEB08	CMU Masonry Walls (Summary)																							
85005	CMU Elevator Shaft Complete	6-189	20	28JAN08A	11FEB08	CMU Elevator Shaft Complete																							
85015	CMU Control Wall Complete	6-178	20	28JAN08A	11FEB08	CMU Control Wall Complete																							
39205	Fab Structural Steel	14-192	30	14JAN08A	19FEB08	Fab Structural Steel																							
39100	Structural Steel & Misc. Metals	17-192	0	20FEB08	13MAR08	Structural Steel & Misc. Metals																							
39200	Erect Building Steel	10-192	0	20FEB08	04MAR08	Erect Building Steel																							
39400	Steel Joists	7-192	0	05MAR08	13MAR08	Steel Joists																							
39420	Equip. Tower Steel	5-160	0	05MAR08	11MAR08	Equip. Tower Steel																							
39410	Metal Decking	5-189	0	19MAR08	25MAR08	Metal Decking																							
39415	Remove Braces from Process Area Walls	2-189	0	12MAR08	27MAR08	Remove Braces from Process Area Walls																							
39300	Equipment Structure Screen	15-124	0	30APR08	20MAY08	Equipment Structure Screen																							
39500	Roofing, Doors, Windows & Finishes	52-130	0	08APR08	20JUN08	Roofing, Doors, Windows & Finishes																							
39600	Built-Up Roofing System	15-140	0	08APR08	29APR08	Built-Up Roofing System																							
39610	ADmm Framing/Drywall	15-140	0	30APR08	20MAY08	ADmm Framing/Drywall																							
39700	Doors & Windows	10-140	0	08MAY08	22MAY08	Doors & Windows																							
39800	Insulation, Flashing, Caulking & Sealing	5-140	0	23MAY08	30MAY08	Insulation, Flashing, Caulking & Sealing																							
39900	Acoustical Ceiling	5-140	0	02JUN08	06JUN08	Acoustical Ceiling																							
40100	Paint & Protective Coatings	15-130	0	02JUN08	20JUN08	Paint & Protective Coatings																							
40000	Ceramic Tile & Vinyl Flooring	5-140	0	08JUN08	13JUN08	Ceramic Tile & Vinyl Flooring																							
40200	Carpentry, Specialties & Furnishings	21-130	0	02JUN08	30JUN08	Carpentry, Specialties & Furnishings																							
40300	Rough Carpentry	5-128	0	02JUN08	06JUN08	Rough Carpentry																							
40400	Cabinets / Millwork	5-128	0	06JUN08	13JUN08	Cabinets / Millwork																							
40500	Laboratory Equipment	4-128	0	18JUN08	18JUN08	Laboratory Equipment																							
40600	Toilet Partitions & Bath Accessories	4-130	0	23JUN08	28JUN08	Toilet Partitions & Bath Accessories																							
40700	Refrigerator & Misc. Furnishings	21-130	0	27JUN08	30JUN08	Refrigerator & Misc. Furnishings																							
40800	Cake Receiving / Storage Equipment	78-157	0	31JAN08	19MAY08	Cake Receiving / Storage Equipment																							
41100	Reclaimer Bin Conveyors SC-102/202	15-138	0	31JAN08	20FEB08	Reclaimer Bin Conveyors SC-102/202																							
40900	Reclaimer Bins TA-102/202	101-146	0	21FEB08	05MAR08	Reclaimer Bins TA-102/202																							
41400	Sludge Storage Conveyors SC-103/203	24-167	0	17MAR08	17APR08	Sludge Storage Conveyors SC-103/203																							
41200	Load-In Bins Conveyors BC-102/202	12-167	0	02APR08	17APR08	Load-In Bins Conveyors BC-102/202																							
39220	Support Structure Walkway @ Storage Bins	4-167	0	02MAY08	07MAY08	Support Structure Walkway @ Storage Bins																							
41300	Storage Bin Conveyors BC-101/201	6-167	0	08MAY08	19MAY08	Storage Bin Conveyors BC-101/201																							

Start Date	21 JAN 08	Early Bst	19 FEB	Sheet 4 of 10	Rev	Rev	Checked	Sign
Finish Date	01 DEC 08	Target Bst		NECO-HCR-TURNER Jan 31, 08 Update				
Prep Date	31 JAN 08	Program Bst		PBC-SWA BIOSOLIDS PROCESS FACILITY				
Run Date	04 FEB 08 19:08	Critical Activity		Remaining Schedule by Phase of Work				

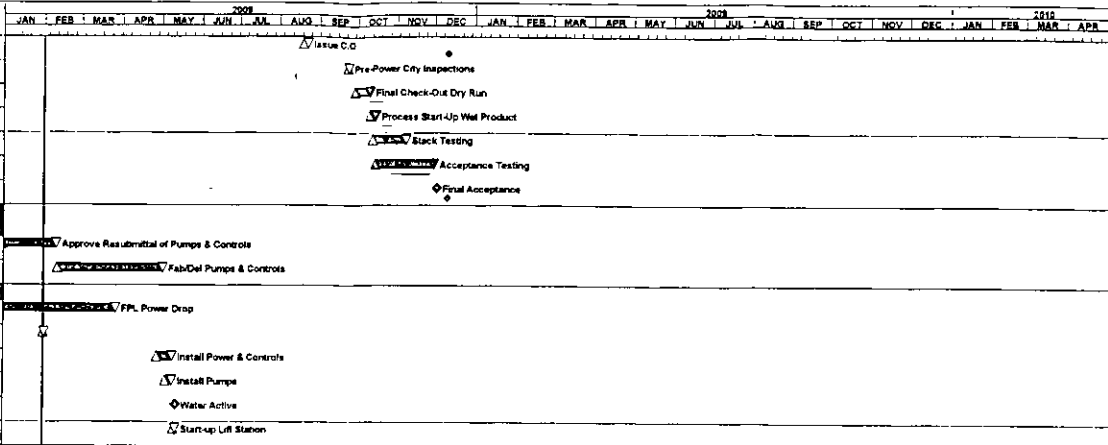
Activity ID	Activity Description	Run Total Dur Float	N	Early Start	Early Finish	2008												2009											
						JAN	FEB	MAR	APR	MAY	JUN	JUL	AUG	SEP	OCT	NOV	DEC	JAN	FEB	MAR	APR	MAY	JUN	JUL	AUG	SEP	OCT	NOV	DEC
47630	Energize Transformer #1 (FPL)	0	-12	0	19MAR08	Energize Transformer #1 (FPL)																							
47700	Elect Cond/Cable Tray Train 1	80	-192	0	02APR08	Elect Cond/Cable Tray Train 1																							
47710	Elect Cond/Cable Tray Train 2	80	-192	0	02APR08	Elect Cond/Cable Tray Train 2																							
47800	Electrical MCCs & Equipment	5	-181	0	01MAY08	Electrical MCCs & Equipment																							
47900	Pull & Terminate Elect Train 1	60	-181	0	08MAY08	Pull & Terminate Elect Train 1																							
47910	Pull & Terminate Elect Train 2	60	-183	0	08MAY08	Pull & Terminate Elect Train 2																							
47720	Inst Cond/Cable Tray Train 1	45	-192	0	26JUN08	Inst Cond/Cable Tray Train 1																							
47730	Inst Cond/Cable Tray Train 2	45	-192	0	26JUN08	Inst Cond/Cable Tray Train 2																							
47920	Pull & Terminate Inst Train 1	45	-192	0	11JUL08	Pull & Terminate Inst Train 1																							
47930	Pull & Terminate Inst Train 2	45	-192	0	11JUL08	Pull & Terminate Inst Train 2																							
47680	Install Transformer #2 Pull Feeders (FPL)	15	-112	0	21JUL08	Install Transformer #2 Pull Feeders (FPL)																							
48000	Energize Pre-Power	10	-181	0	04AUG08	Energize Pre-Power																							
48100	Loop Check Instructions	10	-185	0	04AUG08	Loop Check Instructions																							
47690	Energize Transformer #2 (FPL)	0	-121	0	21AUG08	Energize Transformer #2 (FPL)																							
47650	Permanent Power	2	-191	0	22AUG08	Permanent Power																							
47800	Instrumentation	10	-192	0	15SEP08	Instrumentation																							
START UP & TESTING																													
48780	Standby Generator Functional Test	5	-140	0	22MAY08	Standby Generator Functional Test																							
48715	Screener/Crusher/Separator Eq Functional Test	5	-191	0	26AUG08	Screener/Crusher/Separator Eq Functional Test																							
48775	Air Compressor Equip. Functional Test	1	-190	0	26AUG08	Air Compressor Equip. Functional Test																							
48735	Pneumatic Syst. Equip. Functional Test	1	-190	0	27AUG08	Pneumatic Syst. Equip. Functional Test																							
48710	Dryer Equip. Functional Test	5	-190	0	01SEP08	Dryer Equip. Functional Test																							
48760	RTO Equip. Functional Test	2	-175	0	01SEP08	RTO Equip. Functional Test																							
48720	Conveyence Equip. Functional Test	5	-191	0	05SEP08	Conveyence Equip. Functional Test																							
48725	Product Storage Silos Functional Test	2	-179	0	05SEP08	Product Storage Silos Functional Test																							
48727	Land Fill Gas Operational (By Others)	0	-178	0	06SEP08	Land Fill Gas Operational (By Others)																							
48740	Pellet Cooler Equip. Functional Test	1	-179	0	09SEP08	Pellet Cooler Equip. Functional Test																							
48730	Scrubber/Dust Control Equip. Functional Test	2	-190	0	11SEP08	Scrubber/Dust Control Equip. Functional Test																							
48745	Cooling Tower & Pump Functional Test	3	-191	0	18SEP08	Cooling Tower & Pump Functional Test																							
48725	Bldg Scrubber Equip. Functional Test	3	-186	0	18SEP08	Bldg Scrubber Equip. Functional Test																							
48785	Chemical Feed Pumps Functional Test	2	-191	0	23SEP08	Chemical Feed Pumps Functional Test																							
48770	N2O2 Equip. Functional Test	2	-190	0	23SEP08	N2O2 Equip. Functional Test																							
48785	Polymer Feed Syst. Functional Test	2	-190	0	23SEP08	Polymer Feed Syst. Functional Test																							
48750	Venturi Pump Equip. Functional Test	1	-191	0	25SEP08	Venturi Pump Equip. Functional Test																							
48500	Final City Inspections	1	-191	0	18AUG08	Final City Inspections																							

Start Date	01JAN08	Legend	Empty Bar
Finish Date	01DEC08	Legend	Target Bar
Date Code	11JAN08	Legend	Progress Bar
Run Date	01FEB08 18:03	Legend	Critical Activity

NEPCO-HDR-TURNER Jan 31, 08 Update
 PEC-SWA BIOSOLIDS PROCESS FACILITY
 Remaining Schedule by Phase of Work

Date	Person	Checked	Approved

Activity ID	Activity Description	Rem.Total Dur (float)	%	Early Start	Early Finish
14040	Issue C O	3	-191	0	19AUG08
46610	Pre-Power City inspections	1	-145	0	23SEP08
46300	Final Check-Out Dry Run	10	-192	0	29SEP08
46400	Process Start-Up Wet Product	5	-271	0	11OCT08
46620	Stack Testing	20	-178	0	13OCT08
46900	Acceptance Testing	45	-271	0	16OCT08
48700	Final Acceptance	0	-190	0	01DEC08
CITY SITE UTILITIES					
63600	Approve Resubmittal of Pumps & Controls	10	-81	33	30DEC07A
63700	Fab/Del Pumps & Controls	60	-50	0	11FEB08
64600	FPL Power Drop	58	-38	7	12OCT06A
64215		1	22	0	31JAN08
64500	Install Power & Controls	10	-50	0	28APR08
64400	Install Pumps	5	-50	0	05MAY08
64210	Water Active	0	-50	0	12MAY08
64800	Start-up Lift Station	1	-50	0	12MAY08



Start Date	01JAN08	Extra Bar	NEFCO-HDR-TURNER Jan 31, 08 Update
Finish Date	31DEC08	Target Bar	PBC-SWA BIOSOLIDS PROCESS FACILITY
Date Date	31JAN08	Progress Bar	Remaining Schedule by Phase of Work
Run Date	04FEB08 16:05	Critical Activity	

Date	Revision	Checked	Approved