

DIVISION OF AIR RESOURCE MANAGEMENT

(For Internal Use Only)

ROUTING AND TRANSMITTAL SLIP

ACTION NO

ACTION DUE DATE

1. TO: (NAME, OFFICE, LOCATION)

Initial

Date

2.

Initial

Date

3.

Initial

Date

4.

Initial

Date

REMARKS:

INFORMATION

Review & Return

Review & File

Initial & Forward

DISPOSITION

Review & Respond

Prepare Response

For My Signature

For Your Signature

Let's Discuss

Set Up Meeting

Investigate & Report

Initial & Forward

Distribute

Concurrence

For Processing

Initial & Return

PLEASE RUN THE
MODEL USING THE
REVISED VOC EMISSION
ESTIMATE OF 233.6 TPY.

T HANKS

FROM:

JOHN REYNOLDS

DATE

6-19-89

PHONE

INTEROFFICE MEMORANDUM

For Routing To District Offices And/Or To Other Than The Addressee		
To: _____	Locn: _____	
To: _____	Locn: _____	
To: _____	Locn: _____	
From: _____	Date: _____	
Reply Optional ()	Reply Required ()	Info. Only ()
Date Due: _____	Date Due: _____	

CENTRAL DISTRICT

OCD-AP-89-0494

TO: John Glunn

THROUGH: A. Alexander *AG*

FROM: Charles M. Collins *CMC*

DATE: June 9, 1989

SUBJECT: BREVARD CO - SEA RAY BOAT, AMBIENT AIR IMPACT

We are currently taking enforcement action against Sea Ray Boat Company, Brevard County for operating air pollution sources without permits.

- The company operates two boating operations at one facility with total VOC actual emissions of 185.6 tons/year and total VOC potential emissions of 313.64 tons/year. In addition, Sea Ray operates another permitted boating operation 60 feet from the unpermitted facility with actual emissions of 95.6 tons/year.

The company has submitted the applications for permits to CAPS. Please run air models of the three operations combined, and advise if source is in compliance with current ambient air ground level concentration standards.

REVISED EMISSION ESTIMATES:

OLD PLANT -	125.6	TPY	VOC
NEW PLANT -	57.5	"	"
DEV. FACILITY -	<u>50.5</u>	"	"
	<u>233.6</u>	"	"



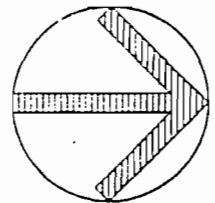
VICINITY MAP

1" = 2000'

ADJACENT PROPERTY OWNERS:

1. CANAVERAL PORT AUTHORITY
P.O. BOX 267
CAPE CANAVERAL, FL 32920
2. FLORIDA DEPARTMENT OF TRANSPORTATION

EXHIBIT "D"



Assume 30 FT

20 THRU WALL EXHAUST FANS
12,000 CFM EACH

240,000 CFM TOTAL

÷ CANAVERAL PORT AUTHORITY ÷

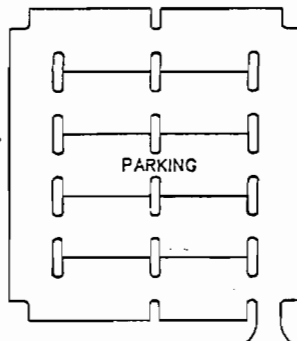
RESIN IS APPLIED IN THIS BUILDING

RESIN & FLAMMABLE STORAGE

÷ FLA. D.O.T. S.R. 528 ÷

+ EXISTING SEA RAY BOATS, INC. +

+ CANAVERAL PORT AUTHORITY +



BOTTOM PAINT

DUST COLLECTORS

15 HP
3500 RPM

50 HP
1770 RPM

FABRICATION & WAREHOUSE

LAMINATION

ASSEMBLY

15 HP
3500 RPM

DUST COLLECTOR

DOCKAGE AREA

NOTES:

1. Dust Collectors Vented To Hopper (No Stack).
2. Raw Resin Is Pumped From Resin Storage To Dispensing Nozzles Within Lamination Building Where It Is Catalyzed.
3. The Flammable Storage Building Contains Gel Coat Resin In 55 Gallon Closed Containers.

+ CANAVERAL PORT AUTHORITY +

SITE PLAN

SEA RAY BOATS, INC.

SYKES CREEK FACILITY

MERRITT ISLAND,

FLORIDA

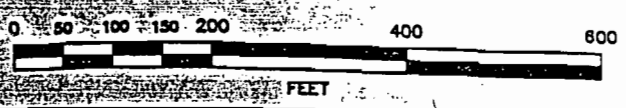
SCALE:
1" = 200'

DATE:
6-20-88

DRAWN:

CANTELOU ASSOCIATES

CONSULTING ENGINEERS • SURVEYORS • PLANNERS
1359 Silver Bluff Rd. Suite B-3/P.O. Box 3102/Alton, S.C. 29801



DIVISION OF AIR RESOURCE MANAGEMENT

(For Internal Use Only)

ROUTING AND TRANSMITTAL SLIP

ACTION NO

ACTION DUE DATE

1. TO: (NAME, OFFICE, LOCATION)

Initial

Date

2.

Initial

Date

3.

Initial

Date

4.

Initial

Date

REMARKS:

HERE'S THE
DATA WE
DISCUSSED.
LET ME KNOW
WHAT ELSE
IS NEEDED.

INFORMATION

Review & Return

Review & File

Initial & Forward

DISPOSITION

Review & Respond

Prepare Response

For My Signature

For Your Signature

Let's Discuss

Set Up Meeting

Investigate & Report

Initial & Forward

Distribute

Concurrence

For Processing

Initial & Return

FROM:

JOHN R.

DATE

6-29

PHONE

EXHIBIT "D"



SITE PLAN

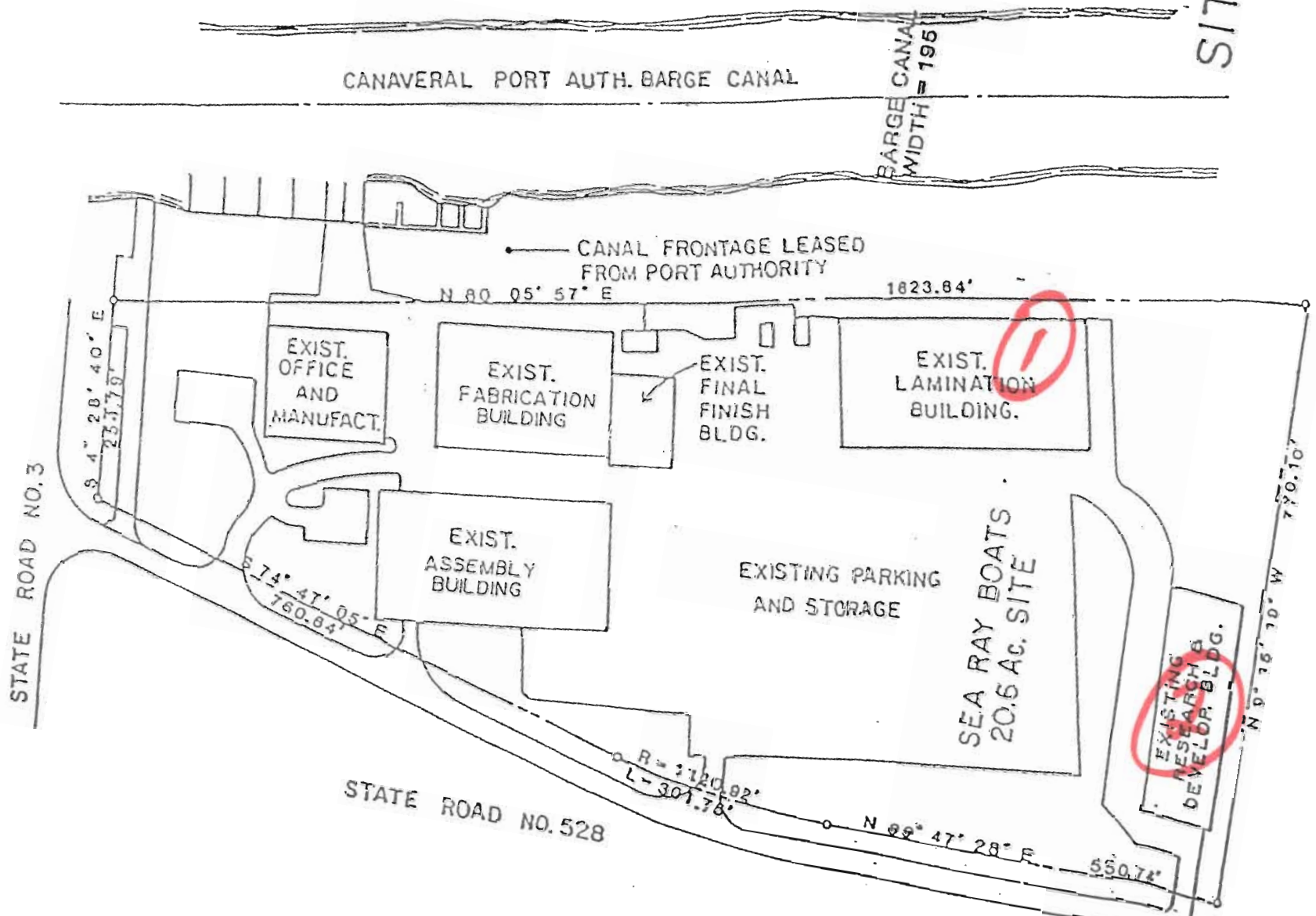
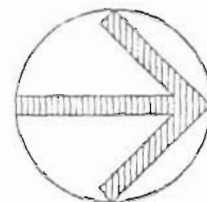


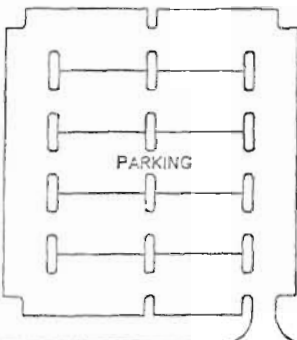
EXHIBIT "D"



FLA. D.O.T. S.R. 528

EXISTING SEA RAY BOATS, INC.

CANAVERAL PORT AUTHORITY



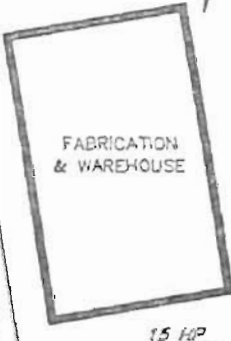
BOTTOM PAINT

DUST COLLECTORS

15 HP 3500 RPM

20 THRU WALL EXHAUST FANS 12,000 CFM EACH

50 HP 1770 RPM



ASSEMBLY

3

LAMINATION

CANAVERAL PORT AUTHORITY

RESIN IS APPLIED IN THIS BUILDING

15 HP 3500 RPM

DUST COLLECTOR

RESIN & FLAMMABLE STORAGE

DOCKAGE AREA

NOTES:

- 1. Dust Collectors Vented To Hopper (No Stack).
- 2. Raw Resin is Pumped From Resin Storage To Dispensing Nozzles Within Lamination Building Where it is Catalyzed.
- 3. The Flammable Storage Building Contains Gel Coat Resin In 55 Gallon Closed Containers.

CANAVERAL PORT AUTHORITY

SITE PLAN

SEA RAY BOATS, INC.

SYKES CREEK FACILITY

MERRITT ISLAND,

FLORIDA

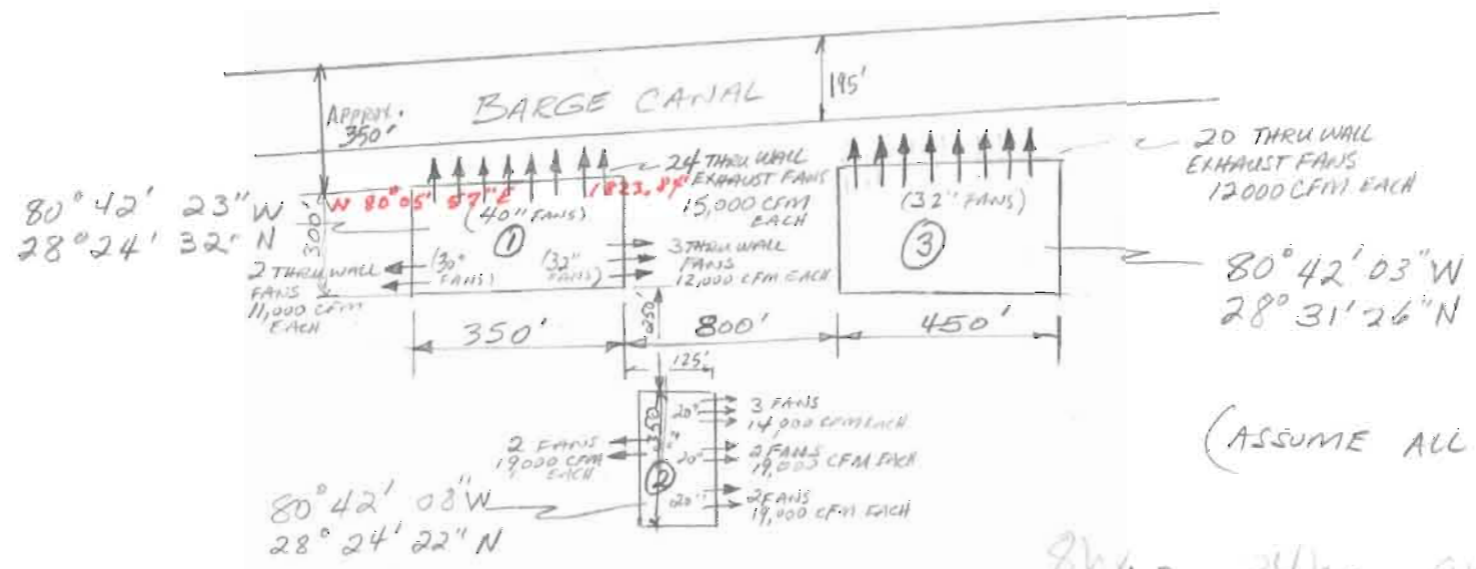


SCALE: 1" = 200'
DATE: 6-20-88
DRAWN:

CANTELOU ASSOCIATES

CONSULTING ENGINEERS • SURVEYORS • PLANNERS
1358 Silver Bluff Rd. Suite B-3/P.O. Box 3102/Litken, S.C. 29801

CANAVERAL PORT AUTHORITY
PROPERTY



(ASSUME ALL FANS 30' ABOVE GROUND)

8hr mg/m³ 24hr annual

EMISSIONS (lb/hr)	①	②	③			
STYRENE	27.7	5	11.3	2.15	.511	$10^{-6}/5.7E-7 = 1.75$
METHYL METHACRYLATE	6.3	0.9	2.5	4.1	.976	
METHYLENE CHLORIDE	0.8	-	-	3.5	.833	
MEKP	-	-	0.5	5.9	1.4	
1,1,1 TRICHLOROETHANE	1.5	0.1	2.1	19.0	4.52	
ACETONE ✓	24.4	20.1	6.3	35.6	8.48	
XYLENE	1.3	-	-	4.35	1.03	

Max 1-hr @ 1 lb/hr = $340.3 \mu\text{g}/\text{m}^3$ @ 105 m

Input Parameters: $E = 1 \text{ lb/hr}$

$H = 10 \text{ m}$

$T = 293$

$V = 0 \text{ m/s}$

$d = 1$

AAL(7-hr)

AAL(24-hr)

Styrene $2150. \mu\text{g}/\text{hr}^3$

$511 \mu\text{g}/\text{hr}^3$

Predicted @ 1 lb/hr

Max 7-hr = $238.2 \mu\text{g}/\text{m}^3$

Max 24-hr = $136.1 \mu\text{g}/\text{m}^3 \times \frac{16}{24} = 90.7 \times 7 = 635 \frac{\mu\text{g}}{\text{m}^3}$