

**Koerner, Jeff**

---

**From:** Koerner, Jeff  
**Sent:** Monday, June 11, 2007 10:38 AM  
**To:** Rogers, Tom  
**Subject:** Buckeye Reconstruction

Tom,

I finally got a reply from EPA Region 4. The following is a relevant excerpt from the final BART rule regarding reconstruction:

What is a "reconstructed source?"

1. Under a number of CAA programs, an existing source which is completely or substantially rebuilt is treated as a new source. Such "reconstructed" sources are treated as new sources as of the time of the reconstruction. Consistent with this overall approach to reconstructions, the definition of BART-eligible facility (reflected in detail in the definition of "existing stationary facility") includes consideration of sources that were in operation before August 7, 1962, but were reconstructed during the August 7, 1962 to August 7, 1977 time period.

2. Under the regional haze regulations at 40 CFR 51.301, a reconstruction has taken place if "**the fixed capital cost of the new component exceeds 50 percent of the fixed capital cost of a comparable entirely new source.**" The rule also states that "[a]ny final decision as to whether reconstruction has occurred must be made in accordance with the provisions of §§ 60.15 (f)(1) through (3) of this title." "[T]he provisions of §§ 60.15(f)(1) through (3)" refers to the general provisions for New Source Performance Standards (NSPS). **Thus, the same policies and procedures for identifying reconstructed "affected facilities" under the NSPS program must also be used to identify reconstructed "stationary sources" for purposes of the BART requirement.**

So, we basically use the same methods we would for an NSPS determination. EPA has guidance indicating that "... engineering, purchase and installation costs, and contractor fees **should be** included in the affected facility reconstruction costs to the extent that they are associated with reconstruction of affected process equipment." However, air pollution control equipment **should not be** included, which was included in the estimated costs. However, even if we subtract out the cost for an ESP or baghouse (maybe \$250,000 to \$500,000 in 1976?), the project costs would still be well below the 50% threshold.

So, it looks like the unit was not "reconstructed" as defined by the rule.

Please call if you have any questions.

Thanks!

Jeff Koerner, BAR - Air Permitting North  
Florida Department of Environmental Protection  
850/921-9536

-----Original Message-----

From: Little.James@epamail.epa.gov [mailto:Little.James@epamail.epa.gov]  
Sent: Monday, June 11, 2007 9:00 AM  
To: Koerner, Jeff  
Subject: Fw: Smurfit Reconstruction

Does Michele Notarianni's response help?

Jim

----- Forwarded by James Little/R4/USEPA/US on 06/11/2007 08:58 AM -----

Michele  
Notarianni/R4/US  
EPA/US

06/11/2007 08:52  
AM

To  
James Little/R4/USEPA/US@EPA

cc

Subject  
Re: Fw: Smurfit Reconstruction  
(Document link: James Little)

Hi Jim,

Yes, we did discuss this. I have a call now but will aim to call you around 10AM (or will email you if you are not there). In summary, the reconstruction definition is summarized on page of the attached final BART rule (39111) and in the BART Guidelines on 39159 (40 CFR Part 51 Appendix Y). We rely on existing definitions and policies.

I (See attached file: BART Final Rule-7-6-05.pdf)

Michele Notarianni (Out of office 6/11 PM-6/12; 6/15-6/25)  
Regional Haze Program  
U.S. EPA - Office of Quality Planning and Standards  
919-541-5371 (phone)  
notarianni.michele@epa.gov (e-mail)

James  
Little/R4/USEPA/  
US

06/11/2007 07:43  
AM

To  
Michele  
Notarianni/R4/USEPA/US@EPA

cc

Subject  
Fw: Smurfit Reconstruction

Michele -

I vaguely recall talking to you about Jeff Koerner's question. Do you remember if I did so or not?

Jim Little  
(404) 562-9118

----- Forwarded by James Little/R4/USEPA/US on 06/11/2007 07:42 AM -----

"Koerner, Jeff"  
<Jeff.Koerner@dep.state.fl.us>  
06/08/2007 05:22 PM  
To  
James Little/R4/USEPA/US@EPA  
cc  
Subject  
FW: Smurfit Reconstruction

Jim,

About a week ago we discussed this issue. I thought you were going to ask around and get back ... honestly can't remember.

Could you give me a call on Monday to discuss?

Thanks!

Jeff Koerner, BAR - Air Permitting North  
Florida Department of Environmental Protection  
850/921-9536

---

From: Koerner, Jeff  
Sent: Thursday, May 24, 2007 3:33 PM  
To: Rogers, Tom  
Cc: Vielhauer, Trina  
Subject: Smurfit Reconstruction

Tom,

I've reviewed the information they provided. It looks like they included costs related to field erection, engineering, drawings and freight. I have some questions on these estimated costs for a replacement unit. I've contacted Jim Little at EPA Region 4. He is contacting a Region 4 person (their designated BART expert) who happens to be in Washington. I'll let you know when I hear back.

Thanks!

Jeff

40 CFR 60.15 Reconstruction.

(a) An existing facility, upon reconstruction, becomes an affected facility, irrespective of any change in emission rate.

[Rule 62-296.800, F.A.C.; 40 CFR 60.15(a)].

(b) "Reconstruction" means the replacement of components of an existing facility to such an extent that:

(1) The fixed capital cost of the new components exceeds 50 percent of the fixed capital cost that would be required to construct a comparable entirely new facility, and

(2) It is technologically and economically feasible to meet the applicable standards set forth in this part.

[Rule 62-296.800, F.A.C.; 40 CFR 60.15(b)].

(c) "Fixed capital cost" means the capital needed to provide all the depreciable components.

[Rule 62-296.800, F.A.C.; 40 CFR 60.15(c)].

(d) If an owner or operator of an existing facility proposes to replace components, and the fixed capital cost of the new components exceeds 50 percent of the fixed capital cost that would be required to construct a comparable entirely new facility, he shall notify the Administrator of the proposed replacements. The notice must be postmarked 60 days (or as soon as practicable) before construction of the replacements is commenced and must include the following information:

(1) Name and address of the owner or operator.

(2) The location of the existing facility.

(3) A brief description of the existing facility and the components which are to be replaced.

(4) A description of the existing air pollution control equipment and the proposed air pollution control equipment.

(5) An estimate of the fixed capital cost of the replacements and of constructing a comparable entirely new facility.

(6) The estimated life of the existing facility after the replacements.

(7) A discussion of any economic or technical limitations the facility may have in complying with the applicable standards of performance after the proposed replacements.

[Rule 62-296.800, F.A.C.; 40 CFR 60.15(d)].

(e) The Administrator will determine, within 30 days of the receipt of the notice required by 40 CFR 60.15(d) and any additional information he may reasonably require, whether the proposed replacement constitutes reconstruction.

[Rule 62-296.800, F.A.C.; 40 CFR 60.15(e)].

(f) The Administrator's determination under 40 CFR 60.15(e) shall be based on:

(1) The fixed capital cost of the replacements in comparison to the fixed capital cost that would be required to construct a comparable entirely new facility;

(2) The estimated life of the facility after the replacements compared to the life of a comparable entirely new facility;

(3) The extent to which the components being replaced cause or contribute to the emissions from the facility; and

(4) Any economic or technical limitations on compliance with applicable standards of performance which are inherent in the proposed replacements.

[Rule 62-296.800, F.A.C.; 40 CFR 60.15(f)].

(g) Individual subparts of this part may include specific provisions which refine and delimit the concept of reconstruction set forth in this section.

[Rule 62-296.800, F.A.C.; 40 CFR 60.15(g)].



Centers  
 Planning  
 Sectors  
 Stakeholder Outreach  
 Applicability Determinations  
 Information Resources  
 About Us  
 Newsroom  
 Where You Live  
 Tips and Complaints  
 Training

## U.S. Environmental Protection Agency

### Compliance Assistance

[Recent Additions](#) | [Contact Us](#) | [Print Version](#) EPA Search:

[EPA Home](#) > [Compliance and Enforcement](#) > [Compliance Assistance](#) > [Applicability Determinations](#) > [Applicability Determination Index](#) > [Search ADI Database](#)

## Search Applicability Determination Index

[Search ADI](#) | [Return to Search Results](#) | [Help](#) | [Technical Support](#) | [Recent ADI Updates](#) | [Related Links](#)

## U.S. Environmental Protection Agency Applicability Determination Index

Control Number: 0200048

**Category:** NSPS  
**EPA Office:** Region 1  
**Date:** 09/03/1999  
**Title:** Reconstruction of Oil-Fired Boiler  
**Recipient:** Christine A. Flass  
**Author:** Michael P. Kenyon

**Subjects:** Part 60, A, General Provisions

**References:** 60.15

#### Abstract:

Q1. Do internal costs of engineering and installation constitute "FIXED CAPITAL costs" even though a company would typically not capitalize them, or are only external contractor and consultant fees counted as FIXED CAPITAL costs?

A1. In a May 11, 1998 determination pertaining to reconstruction costs, EPA stated that the engineering, purchase and installation costs, and contractor fees should be included in the affected facility reconstruction costs (i.e., FIXED CAPITAL cost) to the extent that they are associated with reconstruction of affected process equipment.

Q2. Do the repair and ultimate replacement of a rear boiler wall constitute "FIXED CAPITAL costs" even though these costs were expensed?

A2. The failed repair attempts should not be included in FIXED CAPITAL costs; however, the costs of actual replacement of the rear boiler wall should be included in the FIXED CAPITAL costs.

Q3. What is meant by "comparable entirely new facility" in the definition of reconstruction? When evaluating the costs associated with a comparable entirely new facility to replace the boiler, should the cost of installing a low NOx burner be included?

A3. The term "comparable entirely new facility" would consist of a new boiler with identical components to the repaired boiler. Reconstruction calculations do not include air pollution control equipment; therefore, the source would not include the cost of installing low NOx burners on the new facility unless they are being added to the existing facility.

**Letter:**

September 3, 1999

Christine A. Flass  
Corporate Environmental Manager  
Teknor Apex Company  
505 Central Avenue  
Pawtucket, RI 02861-1900

Dear Ms. Flass:

Thank you for your letter dated August 17, 1999 requesting applicability guidance and clarification regarding the New Source Performance Standard (NSPS), Subpart A, Section 60.15 - Reconstruction. You stated that your company, Teknor Apex (TA), is reviewing costs for re-tubing an existing #6 oil-fired boiler. The letter requests guidance, through a series of questions, on determining whether this action is considered "reconstruction" as defined by the NSPS program. Under this definition of NSPS, the critical issue is whether the costs for re-tubing exceed 50% of the FIXED CAPITAL cost to construct a comparable entirely new facility. Our answers are provided below.

Question 1. Do your internal costs of engineering and installation constitute "FIXED CAPITAL costs" even though your company would typically not capitalize them? In other words, should TA include the cost for TA engineers, TA environmental personnel, and TA maintenance staff in your evaluation? Or are only external contractor and consultant fees counted as FIXED CAPITAL costs? In a May 11, 1998 determination pertaining to reconstruction costs, EPA stated that the engineering, purchase and installation costs, and contractor fees should be included in the affected facility reconstruction costs (i.e., fixed capital cost) to the extent that they are associated with reconstruction of affected process equipment. The "fixed capital cost" is defined as the capital needed to provide all the depreciable components. The May 1998 determination quoted the December 16, 1975 preamble to the construction regulations which states "that the depreciable components included in the computation of FIXED CAPITAL cost include fees such as the costs of engineering, purchase and installation of major process components, contractor fees, instrumentation, auxiliary facilities, and buildings and structures." Thus, if engineers, environmental personnel, and maintenance staff were used in the reconstruction of the affected process equipment, these costs should be included in FIXED CAPITAL costs.

Question 2. You attempted to repair the rear boiler wall twice, before you ultimately replaced it. Does the boiler repair and ultimate replacement constitute "FIXED CAPITAL costs" even though you expensed these costs? The failed repair attempts should not be included in FIXED CAPITAL costs; however, the costs of actual replacement of the rear boiler wall should be included in the FIXED CAPITAL costs. Question 3. Relevant to boiler replacement, what is meant by "comparable entirely new facility" in the definition of reconstruction? When evaluating the costs associated with a comparable entirely new facility to replace the boiler, should the cost of installing a low NOx burner be included? The term "comparable entirely new facility" would consist of a new boiler with identical components to the repaired boiler. Although a new boiler would be subject to the NSPS and may have air pollution control equipment or newer pollutant reduction design features such as low NOx burners, reconstruction calculations do not include air pollution control equipment and must compare like components. Therefore, the source would not include the cost of installing low NOx burners on the new facility unless they are being added to the existing facility. For the new facility, you must estimate the cost of burners comparable to the type of burners on the existing boiler.

Staff members of the Office of Enforcement and Compliance Assurance were consulted in determining this response. Hopefully the answers provided in this letter will assist you in completing your cost evaluation and determining whether or not TA is subject to the NSPS. If you have any questions concerning this matter, please contact Allen Jarrell, of the Air Permits Program, at (617) 918-1314.

Sincerely,

Michael P. Kenyon  
Associate Director for Air Policy  
Office of Ecosystem Protection

[Planning & Results](#) | [Compliance Assistance](#) | [Compliance Incentives & Auditing](#) | [Compliance Monitoring](#)  
[Civil Enforcement](#) | [Cleanup Enforcement](#) | [Criminal Enforcement](#) | [Environmental Justice](#) | [NEPA](#)

---

[EPA Home](#) | [Privacy and Security Notice](#) | [Contact Us](#)

Last updated on Friday, November 10th, 2006

URL: <http://cfpub.epa.gov/adi/index.cfm?>

CFID=648656&CFTOKEN=65250846&jsessionId=6030f0f767da313734d3TR60306630c230&requesttimeout=180



Buckeye submitted a BART modeling protocol, entitled "Revised Air Modeling Protocol to Evaluate BART Options, Buckeye Florida, Limited Partnership, Foley Mill", to FDEP in early January 2007. In the Protocol, the No. 2 Bark Boiler was considered a potential BART-eligible emissions unit. However, after Buckeye's review of the history of the boiler, it is not a BART-eligible emissions unit since it began operations prior to 1962. The boiler was actually a recovery boiler that was converted to a bark boiler in 1976. The original unit was constructed as the No. 1 Recovery Boiler in 1954. Although the conversion in 1976 required a capital expenditure, the conversion did not constitute "reconstruction" under the BART regulations. Under the regional haze regulations at 40 CFR 51.301, reconstruction has taken place if "the fixed capital cost of the new component exceeds 50 percent of the fixed capital cost of a comparable entirely new source." The determination is made in the same manner as is determined under New Source Performance Standards (NSPS) under 40 CFR 60.15.

This report contains a brief source description, visibility modeling methodology, and the visibility modeling analysis results for the facility. The source information and methodologies used for the BART exemption analysis are the same as those presented in the Protocol. A copy of this document has been included for reference in Appendix A.

## 1.2 Source Description

Buckeye operates two power boilers, two bark boilers, three recovery boilers, three smelt dissolving tanks, a lime kiln, two lime slakers, a tall oil plant, two purification plants, a pulping system, and ancillary equipment at the Foley Mill to produce kraft paper. As discussed previously, two of the recovery boilers and two of the smelt dissolving tanks are BART-eligible emissions units. The Foley Mill is located east of U.S. Highway 19 and south of State Road 30, southeast of Perry in Taylor County, Florida. The Universal Transverse Mercator (UTM) coordinates of the Foley Mill are approximately 256.7 kilometers (km) East and 3,328.7 km North in UTM Zone 17.

An area map showing the facility location and prevention of significant deterioration (PSD) Class I areas located within 300 km of the facility is presented in Figure 1-1 in the Protocol. The PSD Class I areas and their distances from Foley Mill are as follows:

- Saint Marks National Wildlife Area (NWA) - 41 km,
- Okefenokee NWA - 123 km,
- Chassahowitzka NWA - 166 km, and
- Wolf Island NWA - 255 km.

**Golder Associates Inc.**

6241 NW 23rd Street, Suite 500  
Gainesville, FL USA 32653  
Telephone (352) 336-5600  
Fax (352) 336-6603  
www.golder.com



April 18, 2007

0637560-0400

Florida Department of Environmental Protection  
Bureau of Air Regulation  
2600 Blair Stone Road, MS #5505  
Tallahassee, Florida 32399-2400

RECEIVED

APR 20 2007

DIVISION OF AIR  
RESOURCES MANAGEMENT

Attention: Mr. Tom Rogers

**RE: BUCKEYE FLORIDA, LIMITED PARTNERSHIP  
FACILITY ID: 1230001  
BART EXEMPTION MODELING APPLICATION  
NO. 2 BARK BOILER INFORMATION**

Dear Mr. Rogers:

In regard to Buckeye Florida, Limited Partnership's (Buckeye) request for exemption from best available retrofit technology (BART), Buckeye previously indicated that it would supply the documentation that the No. 2 Bark Boiler was an existing source as of the BART applicability date of August 7, 1962, and that the emissions unit has not been reconstructed during the period from August 7, 1962, to August 7, 1977. The necessary documentation is attached and is further described below:


1. The No. 1 Recovery Boiler was originally constructed in 1954. Attachment 1 is a portion of the asset history for the Buckeye mill as of 1993. Asset No. 1000906 represents the original No. 1 Recovery Boiler and the converted No. 2 Bark Boiler, covered under a single asset number. This documents the original construction date of 1954 and the conversion to the No. 2 Bark Boiler in June 1977.
2. Attachment 2 is the cover page of an appropriation request dated July 3, 1975, to convert the No. 1 Recovery Boiler to the No. 2 Bark Boiler. The purpose of including this is to show the appropriation number was BC-386.
3. Attachment 3 is a close-out document dated June 30, 1980, for three appropriations. BC-386 is the top one on the page. The original appropriation was for \$6,750,000. The actual spending on that project is shown on the page as \$6,681,080.
4. Attachment 4 contains copies of several drawings of the conversion of the No. 1 Recovery Boiler to the No. 2 Bark Boiler.
5. Attachment 5 contains a letter from Babcock and Wilcox Company (B&W) that presents an estimate of the cost of constructing a greenfield bark boiler

in the 1970s. B&W's estimate is approximately \$3 million times a factor of between 6 to 7 to adjust for a full scope of supply and a greenfield boiler. Thus, B&W estimates a minimum of \$18 million to construct a new bark boiler of comparable size in the 1970s. The actual amount spent on the conversion of to the No. 2 Bark Boiler of \$6.7 million represents, at most, 37 percent of the cost of the new bark boiler. Thus, the conversion did not constitute "reconstruction".

Since the No. 2 Bark Boiler was an existing source as of the BART applicability date of August 7, 1962, and the emissions unit has not been reconstructed during the period from August 7, 1962, to August 7, 1977, the No. 2 Bark Boiler is not a BART-eligible emissions unit.

If you have any questions this information, please do not hesitate to call me at (352) 336-5600 or email at [dbuff@golder.com](mailto:dbuff@golder.com).

Sincerely,

GOLDER ASSOCIATES INC.  
  
David A. Buff, P.E., Q.E.P.  
Principal Engineer  
Florida Professional Engineer #19011  
DB/nav  
Enclosures

cc: Dave Weeden  
Ray Perry

Y:\Projects\2006\0637560 Buckeye Foley Mill\Correspondence\041807\L041807\_560.doc

**ATTACHMENT 1**

FAARF078  
0006 P&G CELLULOSE CO.  
3921 FOLEY

CORPORATE FIXED ASSETS BY DEPARTMENT  
(FOR PLANT USE)  
AS OF 02 / 1993

SYSTEM DATE: 02/26/93 PAGE: 340  
SYSTEM TIME: 17.39.38

DEPT: 8050

-----CORP-----										
ASSET NO.	DESCRIPTION	SERIAL NO.	EQUIP NO.	AE NO.	BLDG /FLR	DATE	LI FE	ASSET COST	NET BOOK	EST MO DEPRE
1000905003	POWER BOILER W/SOOT BLOWER AIR H			0000	001601	06/1956	28	4,754	0	0
1000905005	POWER BOILER W/SOOT BLOWER			0000	001601	09/1954	05	96,589	0	0
1000905006	ADD TO ASSET 100905 RECONFIG BUR			7404	001602	12/1991	20	12,599	11,917	53
→ 1000906001	BLACK LIQUOR RECOVERY FURNACE			0110	001601	09/1954	30	187,152	0	0
1000906002	BLACK LIQUOR RECOVERY FURNACE			0110	001601	09/1954	30	257,923	0	0
1000906004	4 ACCESS DOORS			0924	001601	03/1961	23	9,626	0	0
1000906005	SOOT BLOWERS #16763 & #16764			0926	001601	05/1962	22	7,556	0	0
1000906007	FIBERGLASS SIDING			5073	001601	12/1968	16	13,688	0	0
1000906008	U-BENDS \$4955; LOOPS TIED			2355	001601	03/1970	14	18,350	0	0
1000906010	BLACK LIQUOR RECY FURNACE			0000	001601	09/1954	05	220,447	0	0
1000906011	BLACK LIQUOR RECOVERY BOILER			3608	001601	06/1977	12	96,590	0	0
→ 1000906013	CONVERT RECOV. BOILER TO BARK BOI			3914	001601	06/1977	11	699,388	0	0
1000906014	# 2 BARK BOILER			3914	001601	06/1977	11	473,330	0	0
1000906015	CONVERT RECOV. BOILER TO BARK BOI			4128	001601	05/1978	10	966,511	0	0
1000906016	#2 BARK BOILER-FLOOR & SUPPORTS			4128	001601	05/1978	10	37,648	0	0
1000906017	PVC SEAL FOR #2 STACK			4128	001690	05/1978	10	6,064	0	0
1000906018	BLACK LIQUOR RECOVERY FURNACE			3478	001601	02/1980	09	14,482	0	0
1000906019	#2 BARK BOILER			5545	001601	06/1980	08	61,048	0	0
1000906020	#2 BARK BOILER			5545	001601	06/1980	08	2,378	0	0
1000906022	BARK BOILER *			4899	001601	06/1981	30	1,156,387	709,895	3,212
1000906023	#2 BARK BOILER BEARINGS, SHAFTS			5243	001601	12/1982	06	158,465	0	0
1000906025	#2 BARK BOILER /IGNITOR			5436	001601	12/1983	05	130,950	0	0
1000906029	CONV #1 REC BLR TO #2 BARK BOILE			6642	001601	04/1980	08	1,677	0	0
1000906030	CONV #1 REC BLR TO #2 BARK BOILE			5545	001601	06/1980	08	1,743	0	0
1000906031	CONV #1 REC BLR TO #2 BARK BOILE			4123	001601	06/1979	09	6,988	0	0
1000906032	CONV #1 REC BLR TO #2 BARK BOILE			4123	001601	06/1979	09	45,374	0	0
1000906034	CONV #1 REC BLR TO #2 BARK BOILE			4383	001601	06/1979	09	29,011	0	0
1000906035	ADD-#2 BARK BOILER-FISHER 4" FEE			7389	001601	06/1991	15	9,361	8,373	52
1000908002	CO2 SYSTEM			0112	001601	09/1954	14	1,418	0	0
1000908003	CO2 SYSTEM			4555	001601	06/1981	07	6,264	0	0
1000916002	NEUTRAL GROUND EQUIP 1500KW			0112	001601	09/1954	33	1,614	0	0
1000917002	NEUTRAL GROUND EQUIP 6000KW			0112	001601	09/1954	33	1,614	0	0
1000918002	NEUTRAL GROUND EQUIP 7500KW			0112	001601	09/1954	33	1,614	0	0
1000920002	GENERATORSURGE PROTECTION 1500K			0112	001601	09/1954	33	1,453	0	0
1000921002	GENERATORSURGE PROTECTION 6000K			0112	001601	09/1954	33	1,453	0	0
1000921003	12 SURGE CAPACITORS			6726	001601	05/1991	15	5,650	5,050	31
1000922002	GENERATORSURGE PROTECTJDN 7500K			0112	001601	09/1954	33	1,453	0	0
1000922003	12 SURGE CAPACITORS			6726	001601	05/1991	15	5,650	5,050	31
1000926001	2 GENERATOR HOUSINGS			0112	001601	09/1954	30	3,637	0	0
1000926002	GENERATORHOUSINGS			0000	001601	09/1954	31	4,389	0	0
1000926003	GENERATORHOUSINGS			0000	001601	09/1954	05	2,364	0	0

**ATTACHMENT 2**

BEST AVAILABLE COPY

RPV

THE MANAGEMENT COMMITTEE

THE BUCKEYE CELLULOSE CORPORATION

Name of Company

CELLULOSE & SPECIALTIES DIVISION

Gentlemen:

Date: July 3, 1975

Subject: APPROPRIATION - FOLEY  
WASTE FUEL BOILER

Authority is requested for an appropriation not to exceed \$6,750,000 to convert the No. 1 recovery boiler at Foley to allow it to burn bark and other waste wood fuel.

This is a "Savings Project" with a payout of 3.3 years and a rate of return of 27%.

Respectfully submitted,



R. E. Cannon

APPROPRIATION BC-386

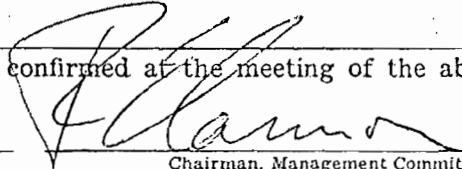
Concurrence:

This request for authority was granted or action was confirmed at the meeting of the above

Management Committee held

7/7/75

Date



Chairman, Management Committee

- |            |                |                |
|------------|----------------|----------------|
| cc Messrs. | R. E. Cannon   | G. M. Gibson   |
|            | T. M. Courtney | J. A. Carroll  |
|            | F. P. Smith    | G. J. Roerty   |
|            | D. B. Ferraro  | W. S. Murphy   |
|            | R. C. Peterson | J. B. Kiley ✓  |
|            | J. J. Engber   | J. S. Tobias   |
|            | M. H. Beckman  | D. H. Whitcomb |

\*Use for Requests for Authority or confirmation of action addressed to management and for reporting such acts to the Administrative Committee or to The Industrial Gamble Company.

**ATTACHMENT 3**



# INTERDEPARTMENTAL CORRESPONDENCE

FROM D. R. Fraser

DATE June 30, 1980

TO Mr. D. B. Ferraro

RETENTION LIMIT Non-Discretionary

SUBJECT Closing of Appropriations

ATTENTION

We have submitted for closure the AE's on the following appropriations and they can now be closed.

We furnish the usual information below:

Appropriation No. BC-386 Amount \$ 6,750,000

<u>AE No.</u>	<u>Amount</u>	<u>Amount Closed</u>	<u>Capital</u>	<u>Expense</u>
3478	42,124	33,605	33,139	466
3914	4,012,112	4,012,112	3,724,824	287,288
4128	1,625,941	1,625,941	1,531,936	94,005
4346	215,000	215,000	215,000	-0-
4383	219,823	219,823	188,535	31,288
5545*	152,447	127,046	118,712	8,334
6360*	208,500	208,500	195,583	12,917
6742*	211,370	211,370	198,781	12,589
4120*	27,683	27,683	24,321	3,362
<b>Total</b>	<b>6,715,000</b>	<b>6,681,080</b>	<b>6,230,831</b>	<b>450,249</b>

Appropriation No. BC-398 Amount \$ 1,900,000

<u>AE No.</u>	<u>Amount</u>	<u>Amount Closed</u>	<u>Capital</u>	<u>Expense</u>
3597	6,722	(14,573)	(14,573)	-0-
3826	680,000	670,479	657,592	12,887
3924	1,118,278	1,118,278	995,759	122,519
4211	45,030	38,233	37,659	574
6243*	106,000	80,786	80,425	361
<b>Total</b>	<b>1,956,030</b>	<b>1,893,203</b>	<b>1,756,862</b>	<b>136,341</b>

Appropriation No. BC-450 Amount \$ 250,000

<u>AE No.</u>	<u>Amount</u>	<u>Amount Closed</u>	<u>Capital</u>	<u>Expense</u>
4444	210,000	208,601	200,622	7,979
<b>Total</b>	<b>210,000</b>	<b>208,601</b>	<b>200,622</b>	<b>7,979</b>

\* Engineering AE's



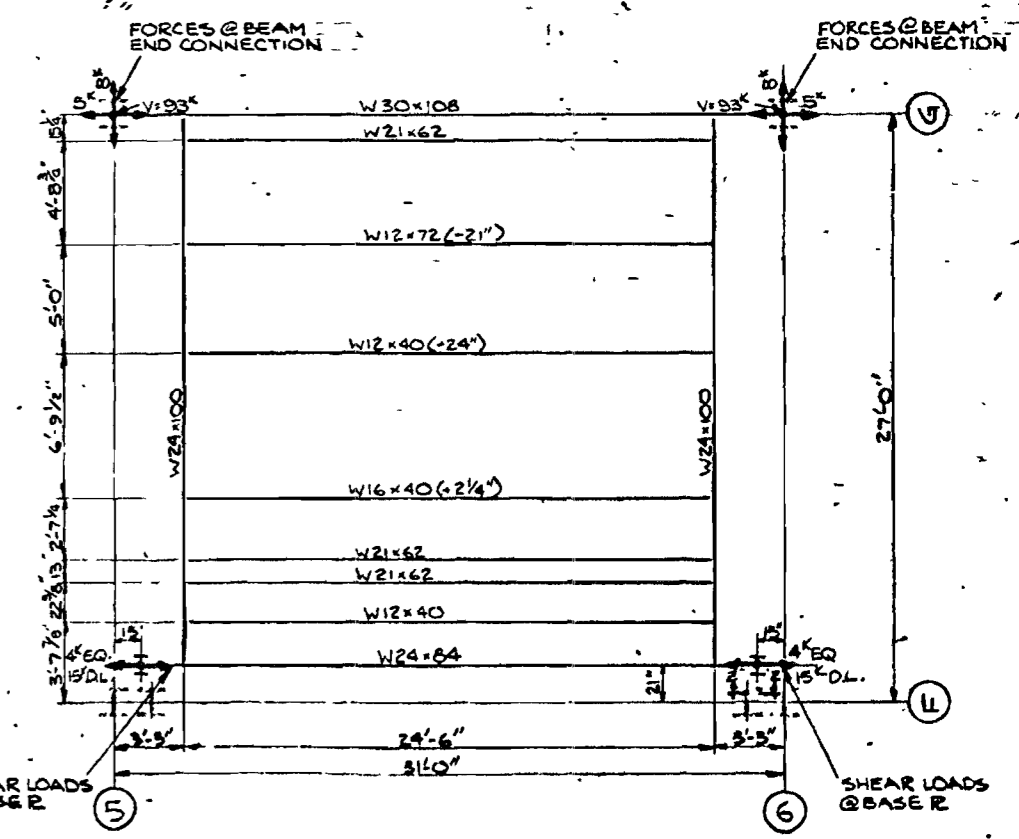
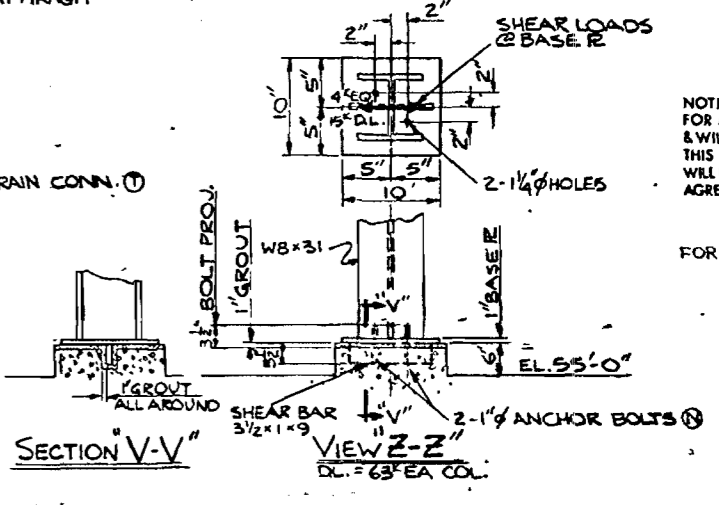
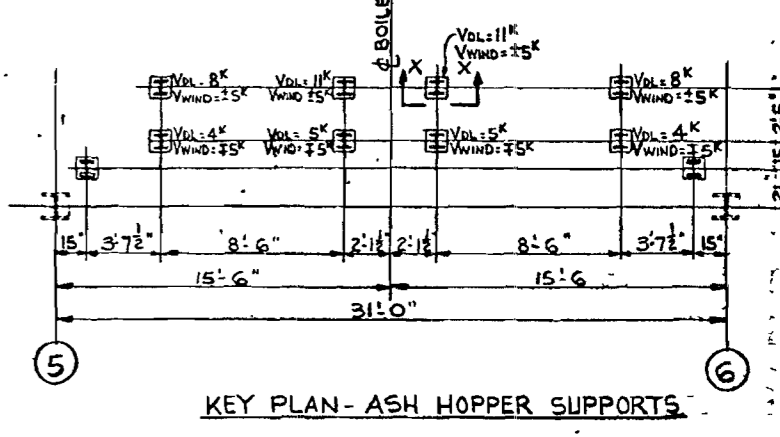
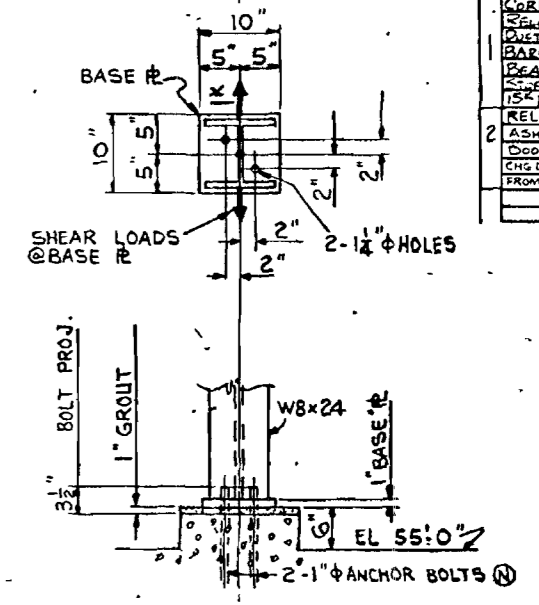
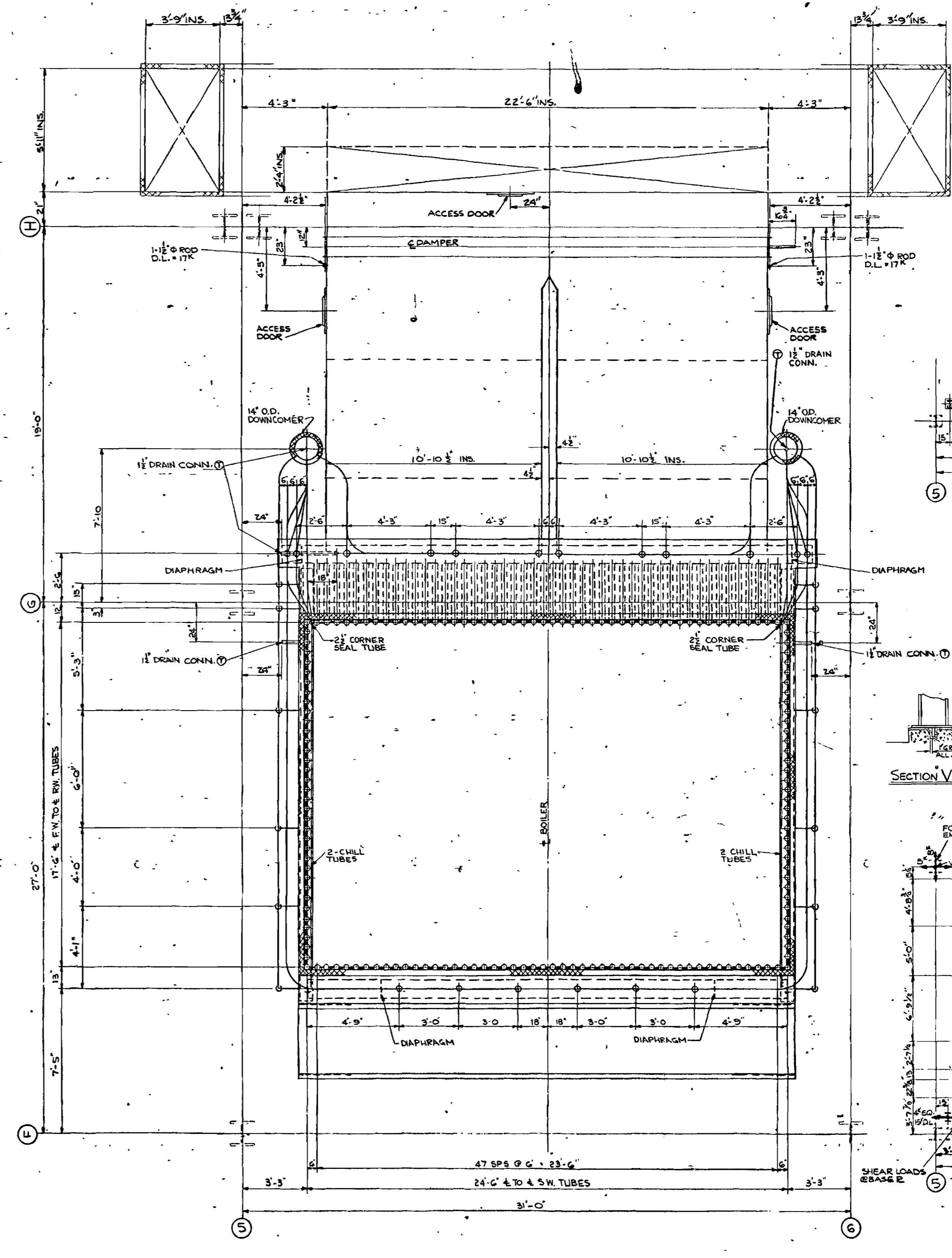
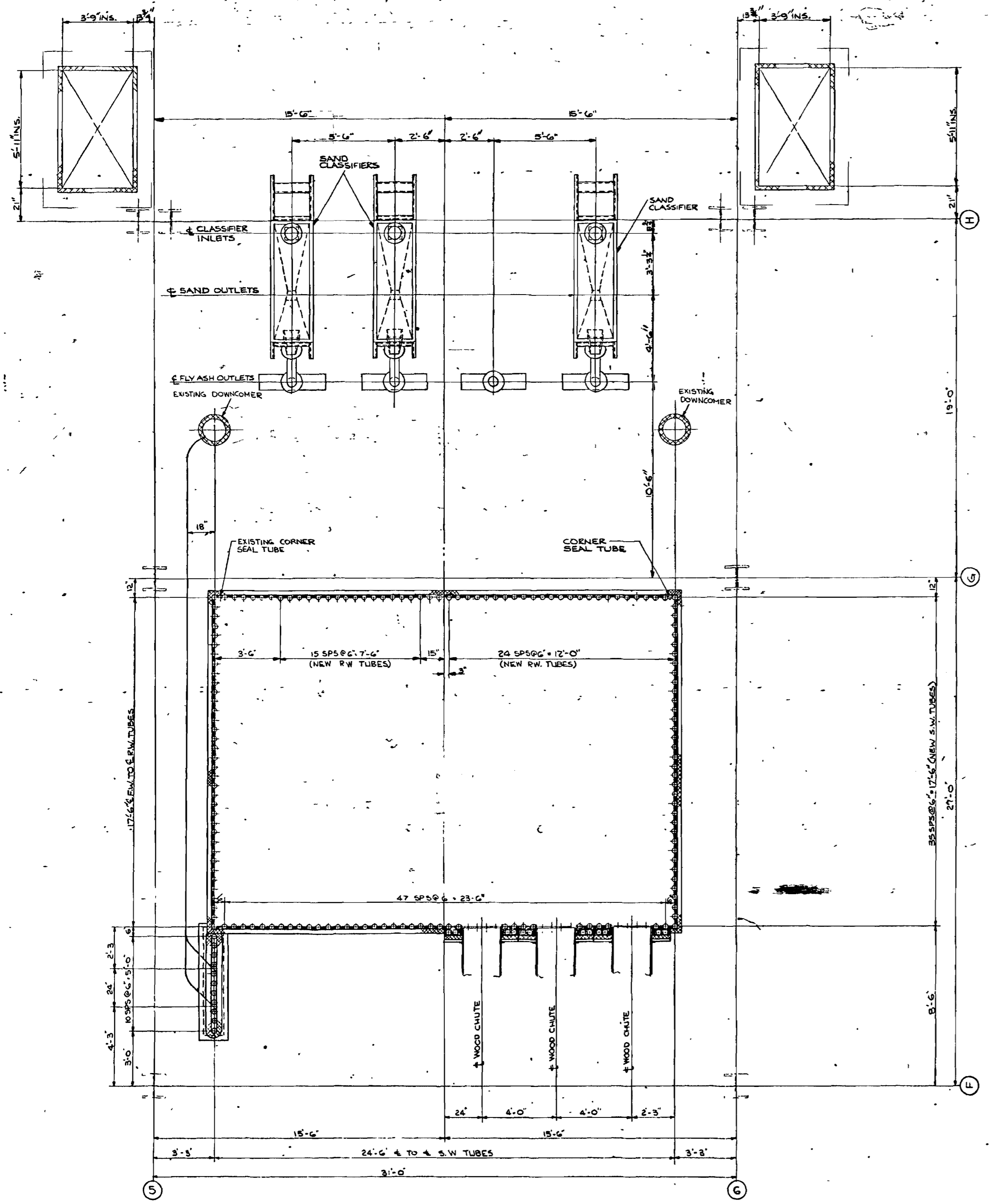
D. R. Fraser

DRF:ast

cc: R. P. Dice  
C. F. Harrington  
W. V. Moore

**ATTACHMENT 4**

REV.	DATE	REVISION
1	12/1/57	REVISED TO SHOW ASH HOPPER SUPPORTS
2	12/1/57	REVISED TO SHOW STOKER SUPPORTS
3	12/1/57	REVISED TO SHOW CHILL TUBES
4	12/1/57	REVISED TO SHOW DIAPHRAGMS
5	12/1/57	REVISED TO SHOW ACCESS DOORS
6	12/1/57	REVISED TO SHOW DOWNCOMERS
7	12/1/57	REVISED TO SHOW SEAL TUBES
8	12/1/57	REVISED TO SHOW WOOD CHUTES
9	12/1/57	REVISED TO SHOW S.W. TUBES
10	12/1/57	REVISED TO SHOW S.W. TUBES
11	12/1/57	REVISED TO SHOW S.W. TUBES
12	12/1/57	REVISED TO SHOW S.W. TUBES
13	12/1/57	REVISED TO SHOW S.W. TUBES
14	12/1/57	REVISED TO SHOW S.W. TUBES
15	12/1/57	REVISED TO SHOW S.W. TUBES
16	12/1/57	REVISED TO SHOW S.W. TUBES
17	12/1/57	REVISED TO SHOW S.W. TUBES
18	12/1/57	REVISED TO SHOW S.W. TUBES
19	12/1/57	REVISED TO SHOW S.W. TUBES
20	12/1/57	REVISED TO SHOW S.W. TUBES



NOTICE TO PURCHASER - REFER TO CONTRACT FOR MATERIAL TO BE SUPPLIED BY THE BARCOCK & WILCOX COMPANY MATERIAL SHOWN UPON THIS DRAWING NOT INCLUDED IN THE CONTRACT WILL NOT BE SUPPLIED WITHOUT SUPPLEMENTARY AGREEMENT.

FOR NOTES SEE DWG. 33972F

FOR BUCKEYE CELLULOSE CORP. POLEY, FLORIDA

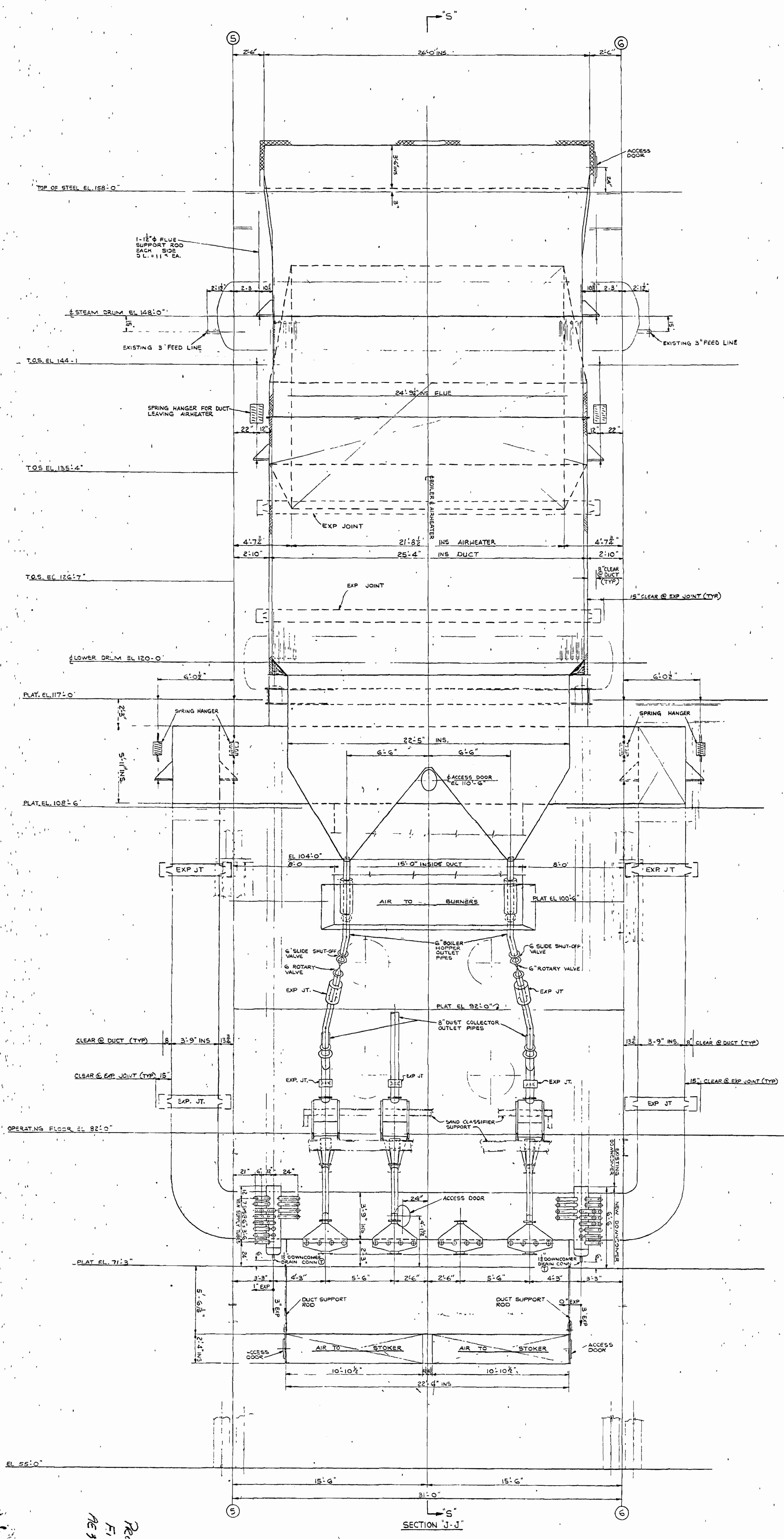
THE PROJECT IS THE PROPERTY OF THE BARCOCK & WILCOX CO. ALL RIGHTS ARE RESERVED. THIS IS A CONTRACT DRAWING AND IS NOT TO BE REPRODUCED OR COPIED IN ANY MANNER WITHOUT THE WRITTEN PERMISSION OF THE BARCOCK & WILCOX COMPANY. ANY REPRODUCTION OR COPIING OF THIS DRAWING WITHOUT THE WRITTEN PERMISSION OF THE BARCOCK & WILCOX COMPANY IS STRICTLY PROHIBITED.

PLAN SECTS E-E, E-E', F-F, F-F' EXISTING RECLUNIT S-3838 CONVERTED TO OIL & BARK FIRING

33975F-2

14M Div.

TUBE 11-27



BEST AVAILABLE COPY

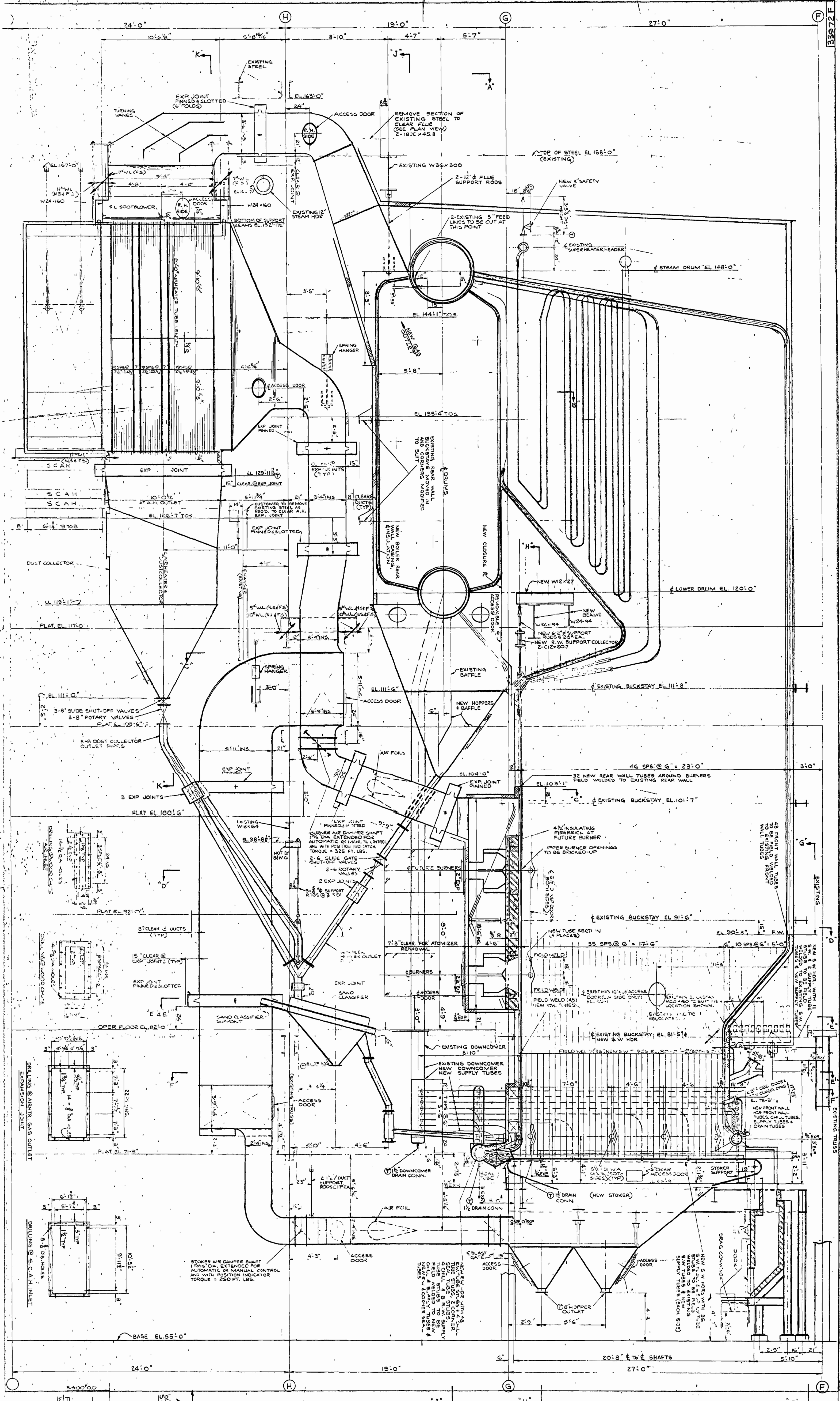
SECTION J-J

REOS 1941 # 38  
 FILE - FI-11-38  
 AC 3478/5585  
 14. DN  
 33970F-3

NOTICE TO PURCHASER: THIS DRAWING IS THE PROPERTY OF THE U.S. GOVERNMENT AND IS LOANED TO YOU. IT IS TO BE USED FOR THE PURPOSES SPECIFIED IN THE ORDER AND IS NOT TO BE REPRODUCED OR TRANSMITTED IN ANY FORM OR BY ANY MEANS, ELECTRONIC OR MECHANICAL, INCLUDING PHOTOCOPYING, RECORDING, OR BY ANY INFORMATION STORAGE AND RETRIEVAL SYSTEM, WITHOUT PERMISSION IN WRITING FROM THE U.S. GOVERNMENT.

REV. No.	DATE	BY	CHKD.
1			
2			
3			
4			
5			
6			
7			
8			
9			
10			

2



SIDE SECTION 'S-S'

3

Handwritten notes and signatures in the bottom left corner.

NO.	REVISION	DATE	BY	CHKD.
1	AS SHOWN			
2				
3				
4				

NOTE: IN ORDER TO MAINTAIN THE CLEARANCE TO THE EXISTING STEEL, THE NEW STEEL SHALL BE WELDED TO THE EXISTING STEEL. THE WELDS SHALL BE MADE BY THE CONTRACTOR. THE CONTRACTOR SHALL BE RESPONSIBLE FOR THE PROTECTION OF THE EXISTING STEEL. THE CONTRACTOR SHALL BE RESPONSIBLE FOR THE PROTECTION OF THE EXISTING STEEL. THE CONTRACTOR SHALL BE RESPONSIBLE FOR THE PROTECTION OF THE EXISTING STEEL.

DR No 33972 F-4

Make 9/11/11 of 1/11/11

**ATTACHMENT 5**



# The Babcock & Wilcox Company

a McDermott company

2302 Parklake Drive, N.E. Suite 300 • Atlanta, Georgia 30345 USA • (770) 939-6292 • www.babcock.com

January 10, 2007

Buckeye Florida  
Route 3  
P.O. Box 260  
Perry, Florida 32347

Attention: Mr. Dave Streit

Subject: 1970's Bark Boiler Budget Pricing

Dear Dave:

Per your request for the price of a bark boiler from the 1970's era, I am pleased to submit the following:

We have found two (2) boilers sold in this time period that fits your requirements. They are:

<u>Contract</u>	<u>Capacity</u>	<u>Temp.</u>	<u>Pressure</u>	<u>Fuel</u>	<u>Year</u>
S-10304	400,000 lbs/hr	825F	1150 psig	bark & oil	1978
S-10318	390,000 lbs/hr	825F	1050 psig	Bark coal & oil	1979

## SCOPE OF SUPPLY:

### S-10304:

Boiler & Furnace  
Superheater  
Economizer  
Air Heater  
Flues & Ducts  
Steam Coil Air Heater  
Burners & Igniters  
Stoker  
Soot Blowers  
Condenser & Attemperator  
Dust Collector  
Rotary Seal Valves  
Thermocouples  
Thermoprobe  
NRV  
Engineering & Drawings  
Freight

### S-10318:

Boiler & Furnace  
Superheater  
Economizer  
Air Heater  
Flues & Ducts  
Steam Coil Air Heater  
Burners & Igniters  
Stoker  
Soot Blowers  
Condenser & Attemperator  
Dust Collector  
Rotary Seal Valves  
Thermocouples  
Thermoprobe  
NRV  
FD Fan  
ID Fan  
Safety System  
Engineering & Drawings  
Freight

**NOT INCLUDED:**

Bark handling equipment to the entrance of the air swept spouts  
Maintenance Beams  
Stack  
Building Steel  
Building Siding (Operating Level) and Roof  
All Piping  
Lighting and Building Services  
Hoist  
FD Fans (S-10304)  
Fans Drives  
ID Fan (S-10304)  
Fans Drives  
Continuous Blowdown Tank  
Blow-Off Tank  
SCAH Drain Pots  
Flash Tank  
Electrostatic Precipitator  
Fire Protection  
Stations Emergency Eye Wash  
Brickwork, Refractory, Insulating & Lagging  
Pipe Insulation & Jacket  
Tank & Equipment Insulation & Lagging  
Precipitator Isolation Dampers  
Feedwater Regulator  
Field Instrumentation  
I&C Equipment  
DCS  
Electrical Equipment including MCC's  
HVAC Equipment  
Feedwater Valves  
Chemical Feed System  
Dry Ash Removal System  
Field Erection

**PRICING:**

For the equipment as described herein, the contract selling prices were:

S-10304:

**\$2,579,368.00**

S-10318:

**\$3,561,543.00.**

To correct the above prices to include a full scope of supply (green field application), we estimate the above prices would be between 6 to 7 times the vales shown above.



Mr. Dave Streit  
Buckeye Florida

-3-

July 15, 2005

We believe this completes the information as requested at this time and ask that you please contact me at 770-621-3903 if you have any questions regarding the subject letter, or should you require additional information.

Regards,

The Babcock & Wilcox Company

John Burkhardt  
District Sales Engineer

Tel. 770-621-3903

Fax 770-621-3922

Email [jburkhardt@babcock.com](mailto:jburkhardt@babcock.com)