



Florida Municipal Power Agency

August 3, 2009

Mr. Michael Halpin, P.E.
Administrator, Siting Coordination Office
Florida Department of Environmental Protection
3900 Commonwealth Boulevard
Douglas Office Building, MS-48
Tallahassee, FL 32399-3000

Re: **Cane Island Power Park Unit #4, PA 98-38A2**
Post Certification Amendment to Site Certification Application
Reclaimed Water Supply / Wastewater Return System Improvements

Dear Mr. Halpin,

On behalf of the Florida Municipal Power Agency (FMPA) and the Kissimmee Utility Authority (KUA), I am pleased to submit five copies of this request for amendment of the Cane Island Power Park Site Certification, PA 98-38A2. In accordance with Chapter 62-17.205, F.A.C. copies of this request have also been provided to all affected agencies and parties to the Unit 4 certification as listed on the attached Service and Distribution List.

The request proposes the installation and operation of pumps and piping on the certified site that are needed to improve the supply and return of the Toho Water Authority's reclaimed water. A complete description of the proposed facilities is enclosed.

We look forward to working with you and your staff as you review this request. Please contact me at (407) 355-7767 or via e-mail at susan.schumann@fmpa.com if you have any questions.

Sincerely,

Susan Schumann
Environmental Licensing & Permitting
Florida Municipal Power Agency

Enclosures

cc: Service and Distribution List

Susan Schumann
Environmental Licensing and Permitting

RECEIVED

AUG 05 2009

BUREAU OF AIR REGULATION

**FMPA – KUA Cane Island Power Park
Site Certification Amendment Request
Service and Distribution List**

Mike Halpin, Administrator
Siting Coordination Office
Department of Environmental Protection
2600 Blair Stone Road, MS 48
Tallahassee, FL 32399

Toni L. Sturtevant
Office of General Counsel
Department of Environmental Protection
3900 Commonwealth Boulevard
Tallahassee, FL 32399-3000

Trina Vielhauer, Chief
Bureau of Air Regulation
Department of Environmental Protection
2600 Blair Stone Road, MS 5505
Tallahassee, FL 32399-2400

Vivian Garfein, Administrator
Central Florida District Office
Department of Environmental Protection
3319 Maguire Boulevard, Suite 232
Orlando, FL 32803-3767

Caroline Shine
Air Program Administrator
Central Florida District Office
Department of Environmental Protection
3319 Maguire Boulevard, Suite 232
Orlando, FL 32803-3767

David Herbster, Administrator
Wetland Resource Management
Central Florida District Office
Department of Environmental Protection
3319 Maguire Boulevard, Suite 232
Orlando, FL 32803-3767

Chris Ferraro, Administrator
Water Resource Program
Central Florida District Office
Department of Environmental Protection
3319 Maguire Boulevard, Suite 232
Orlando, FL 32803-3767

Mary Anne Poole, Director
Office of Policy and Stakeholder Coordination
Florida Fish and Wildlife Conservation
Commission
620 S. Meridian Street
Tallahassee, FL 32399-1600

Forrest Watson, Planner III
Division of Forestry
Department of Agriculture and Consumer
Services
3125 Conner Boulevard
Tallahassee, FL 32399-1650

Frederick Gaske
Deputy State Historic Preservation Officer
Department of State
R.A. Gray Building, 4th Floor
500 S. Bronough Street
Tallahassee, FL 32399-0250

Barton Bibler, Chief
Bureau of Water
Department of Health
4052 Bald Cypress Way, Bin #C22
Tallahassee, FL 32399-1708

Katherine Fleming, OGC
Public Service Commission
Gerald Gunter Building
2450 Shumard Oak Boulevard Tallahassee,
FL 32399-0850

Ruth Holmes, OGC
South Florida Water Management District
3301 Gun Club Road
West Palm Beach, FL 32406

Phil Laurien, Executive Director
East Central Florida Regional Planning
Council
681 N Wyman Road
Maitland, FL 32751

**FMPA – KUA Cane Island Power Park
Site Certification Amendment Request
Service and Distribution List**

Michael Freilinger, County Manager
Osceola County
1 Courthouse Square, Suite 4700
Kissimmee, FL 34741

Osceola County Public Library
211 East Dakin Street
Kissimmee, FL 34741

Larry Mattern
Kissimmee Utility Authority
Post Office Box 423219
Kissimmee, FL 34742-3219

Susan Schumann
Florida Municipal Power Agency
8553 Commodity Circle
Orlando, FL 32819-9002

Gary V. Perko
Hopping Green & Sams, P.A.
123 S. Calhoun Street
Tallahassee, FL 32301

Lea Crandall, Clerk
Department of Environmental Protection
2600 Blair Stone Road, MS 5505
Tallahassee, Florida 32399-2400

Jennifer Brubaker, OGC
Public Service Commission
Gerald Gunter Building
2450 Shumard Oak Blvd.
Tallahassee, FL 32399-0850

Judy Harlow
Public Service Commission
Gerald Gunter Building
2450 Shumard Oak Blvd.
Tallahassee, FL 32399-0850

Ed Yaun
South Florida Water Management District
Orlando Regional Service Center
1707 Orlando Central Parkway
Suite 200
Orlando, FL 32809

Kelly Martinson, Asst. Gen. Counsel
Department of Community Affairs
2555 Shumard Oak Blvd.
Tallahassee, FL 32399-0850

Barbara Lenczewski, Planner
Department of Community Affairs
2555 Shumard Oak Blvd.
Tallahassee, FL 32399-0850

James V. Antista, General Counsel
FL Fish & Wildlife Conservation Commission
620 S. Meridian St.
Tallahassee, FL 32399-1600

Emily Norton, OGC
FL Fish & Wildlife Conservation Commission
620 S. Meridian Street
Tallahassee, FL 32399-1600

Jennifer Goff
FL Fish & Wildlife Conservation Commission
South Regional Office
8535 Northlake Blvd
West Palm Beach, FL 33412

Kimberly Menchion
Dept. of Transportation
605 Suwannee St., MS 58
Tallahassee, FL 32399-0450

John Hatfield
Dept. of Transportation
Contracts and Permits Administrator
420 W. Landstreet Road
Orlando, FL 32399-0450

**FMPA – KUA Cane Island Power Park
Site Certification Amendment Request
Service and Distribution List**

Laura Kammerer, Deputy
Division of Historical Resources, SHPO
Dept. of State
R.A. Gray Building
500 S. Bronough St., Room 423
Tallahassee, FL 32399-0250

Jim Golden, Sr. Planner
Environmental Resource Regulation
SFWMD
3301 Gun Club Road
West Palm Beach, FL 33406

Jo Thacker, County Attorney
Osceola county Attorney's Office
1 Courthouse Square, Suite 4200
Kissimmee, FL 34741

Brian Wheeler
Toho Water Authority
101 N. Church Street
Kissimmee, FL 34741-5054

Stanley Armbruster
Black & Veatch
11401 Lamar
Overland Park, KS 66211

**AMENDMENT REQUEST
CANE ISLAND POWER PARK
SITE CERTIFICATION PA 98-38A2**

RECLAIMED WATER SUPPLY/WASTEWATER RETURN SYSTEM IMPROVEMENTS

Proposed Amendment

FMPA and KUA request amendment of the Cane Island Power Park Site Certification to install improvements necessary for the delivery and return of reclaimed water at the site. A new reclaimed water supply connection, supply pipelines and pump structure, and wastewater return pipelines and pump structure are proposed on the certified site. Associated authorizations have been requested from the Toho Water Authority, Osceola County, and are pending from the CSX Railroad.

Purpose/Reason for Amendment

As originally identified in Section 3.5 of the Site Certification Application, and again in the March 2009 response to the South Florida Water Management District's February 2009 request for additional information, new onsite reclaimed water supply and return pipelines have been under consideration. Subsequent to certification, detailed design has determined that the existing facilities are inadequate to provide/handle the needed pressures and volumes. Therefore, FMPA and KUA propose to install the equipment required to improve the delivery and return of the Toho reclaimed water.

Technical Description of Amendment

Based on the range of pressures in the Toho reclaim water supply pipeline at the CIPP site, there will be times when the pressure in the Toho line is inadequate to supply the required volume of reclaim water to the Units 2, 3, and 4 cooling towers. Thus, a pumping station will be added near the site entrance. The pump station will consist of four one-third capacity outdoor horizontal pumps on a slab at-grade within the plant access road corridor. Space for an additional pump will be included for a future unit. A small enclosed air conditioned electrical/control equipment building will be provided next to the pumps along with a small 4160 volt to 480 volt transformer. Power will be supplied to the pumps from Unit 3 via the existing overhead lines along the plant access road.

With the installation of the new supply pumps, a new suction connection will be made to the Toho pipeline. The new suction line is being installed to minimize recirculation between the supply and return line connections on the Toho pipeline. Present connections are approximately five feet apart and during lower Toho pipeline flows and high CIPP flows some of the return water recirculates into the supply connection on the Toho pipeline. To prevent this recirculation, a new 20 inch carbon steel suction connection will be made onto the Toho pipeline approximately 100 feet to the east of the existing connection. The new suction line will run from this connection directly north

across the CSX railroad right-of-way inside an underground 26 inch casing onto the CIPP site, then west to a point near the access road, then north to the new pump station. An application is pending with CSX for this crossing. New pipeline connections are allowed under the existing Toho reclaim water supply agreement.

Based on the range of pressures in the Toho reclaim water supply pipeline at the CIPP site, there will be times when the discharge pressure of the Unit 2 and 3 reclaim water return pumps will not have adequate pressure to return the cooling tower blowdown back to the Toho pipeline. Also, the Unit 2, 3 and 4 return water pumps will be interfering with each other when all are in operation. To eliminate this problem, a new below grade return water collection sump with two full capacity pumps will be installed just to the south of the CIPP substation within the plant proper fencing. The cooling tower blowdown from Units 2 through 4 will be routed to this new sump and then pumped into the existing 12 inch line within the plant access road corridor that connects to the Toho pipeline. The line connection to the existing 12 inch line will be made inside the plant proper fencing, near the plant fuel gas regulating yard. Power supply to the new pumps will be from Unit 3 via a new ductbank between the new collection sump structure and an existing electrical manhole in front of the Unit 2 STG generator step-up transformer.

The Unit 4 cooling tower makeup and blowdown pipelines need to be routed from Unit 4 to the area by the plant fuel gas regulation yard inside the plant proper. These lines will be routed along the east side of the CIPP substation and Unit 3/4 stormwater pond; between the substation/pond and the wetland buffer zone. The reclaim supply line will be connected to the existing 16 inch supply line by the gas regulating yard and routed to the Unit 4 cooling tower. The cooling tower blowdown will be taken from circulating water pump discharge piping and routed to the new return water collection sump. These pipelines (20 inch supply and 12 inch return) will have adequate capacity for the addition of a future unit.

Environmental Consequences of Amendment

All proposed work is within upland areas, existing rights-of-way/corridors, and designated developed areas. No work is proposed in the onsite buffer zone, wetlands, or conservation easement. No impacts to gopher tortoises or other protected species are anticipated. Efforts have been made to minimize noise emissions from the supply pump structure and modeling indicates the proposed noise limits at the site boundary will not be exceeded. Provisions will be made on the pump structure to allow future installation of noise barrier walls should noise become an issue. Areas disturbed during construction, such as trenches and bore pits, will be restored to pre-construction or final design conditions.

Short-term dewatering will be required at the supply and return water pump structures, at the connection to the Toho pipeline and along the new suction line to the new supply pumps. A dewatering plan will be submitted to the SFWMD in accordance with COC XXIII.B.2.g.

Effect of Amendment on Site Certification or Conditions of Certification

FMPA and KUA believe that approval, installation, and operation of the requested facilities will have no effect on the Conditions of Certification (no modifications required), and with no wetlands or other adverse environmental impacts, amendment of the Site Certification to incorporate the proposed facilities is requested.

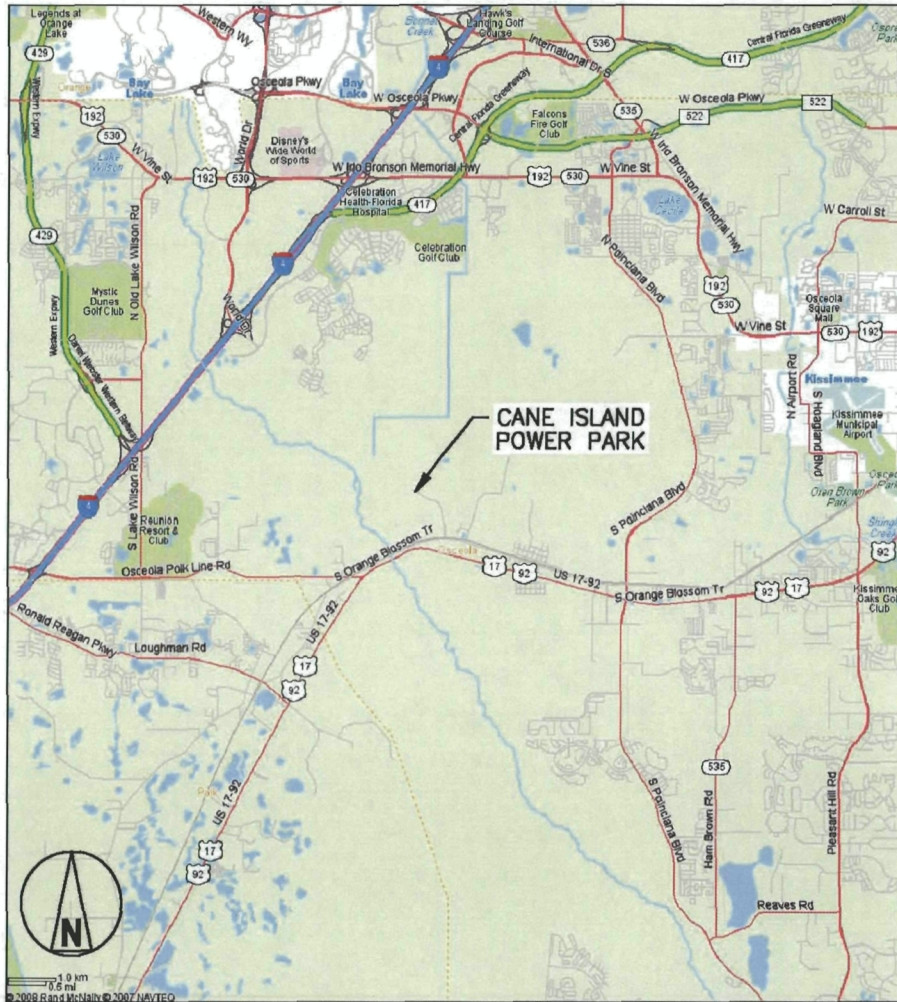
Attachments

Cane Island Power Park Location

Site Plan with Proposed Facilities

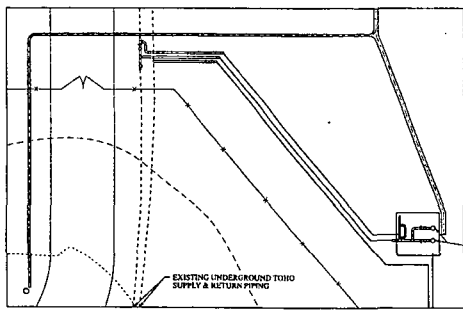
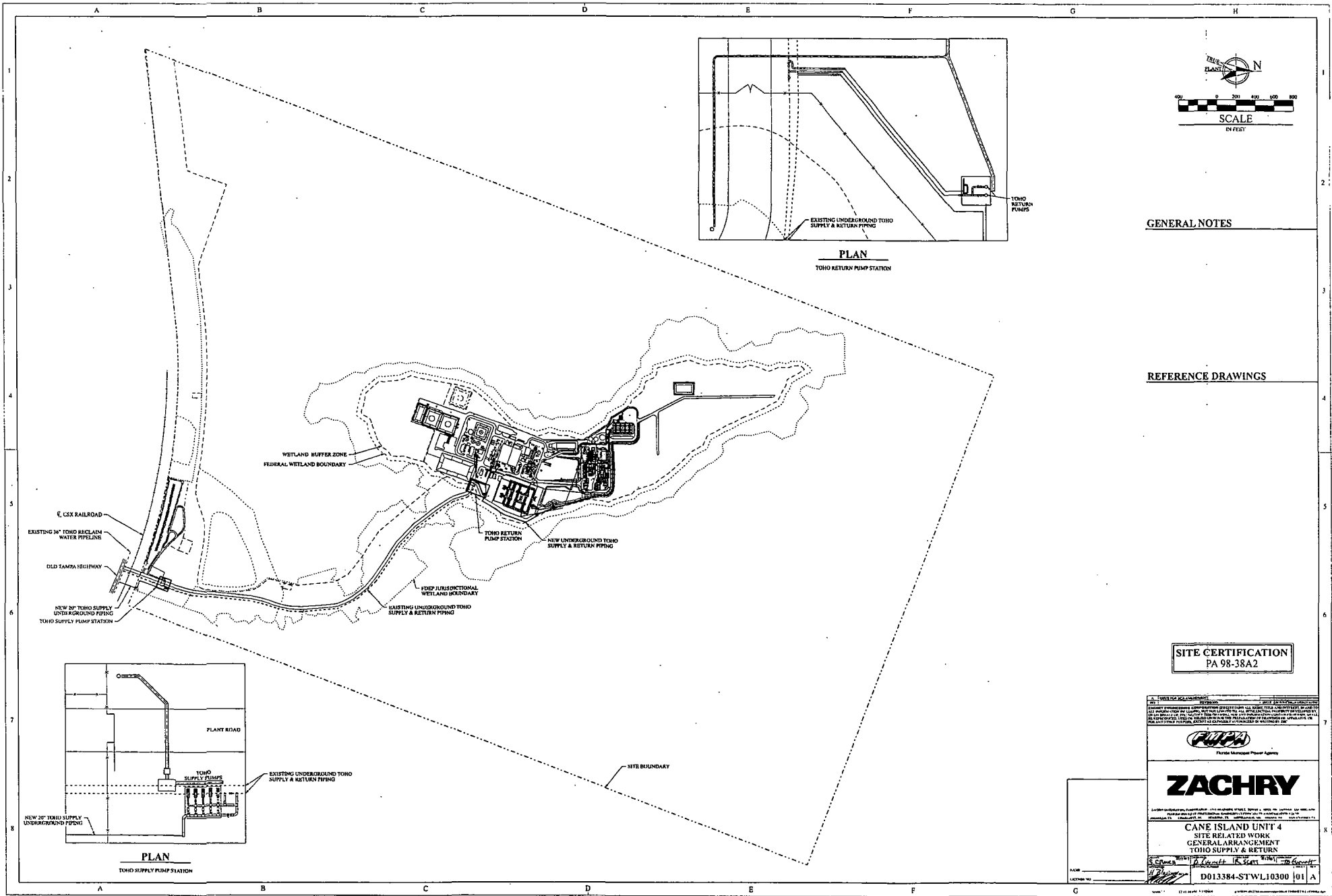
Site Aerial Photo with Proposed Facilities

LOCATION OF OSCEOLA COUNTY IN THE STATE OF FLORIDA

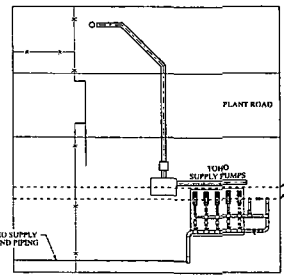


RUMD2825 ACAD 16.1s (LMS Tech)
 A1ASL011 A2 1=1
 03/26/08 09:28:14

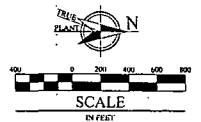
ENGINEER	JMS	DRAWN	MRR	0	04/01/2008	ISSUED FOR CONSTRUCTION	MRR	JMS	MJS	MJS	SAA		
CHECKED	MJS	DATE	04/01/2008	NO	DATE	REVISIONS AND RECORD OF ISSUE	DRN	DES	CHK	PDE	APP		
FLORIDA MUNICIPAL POWER AGENCY CANE ISLAND POWER PARK UNIT 4						PROJECT	DRAWING NUMBER				REV		
						147651-4STA-S1002				0			
REGIONAL SITE LOCATION						CODE	FIGURE 2.1-1						
						AREA							



PLAN
TOHO RETURN PUMP STATION



PLAN
TOHO SUPPLY PUMP STATION



GENERAL NOTES

REFERENCE DRAWINGS

SITE CERTIFICATION
PA 98-38A2

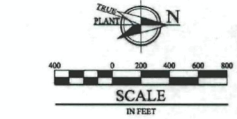
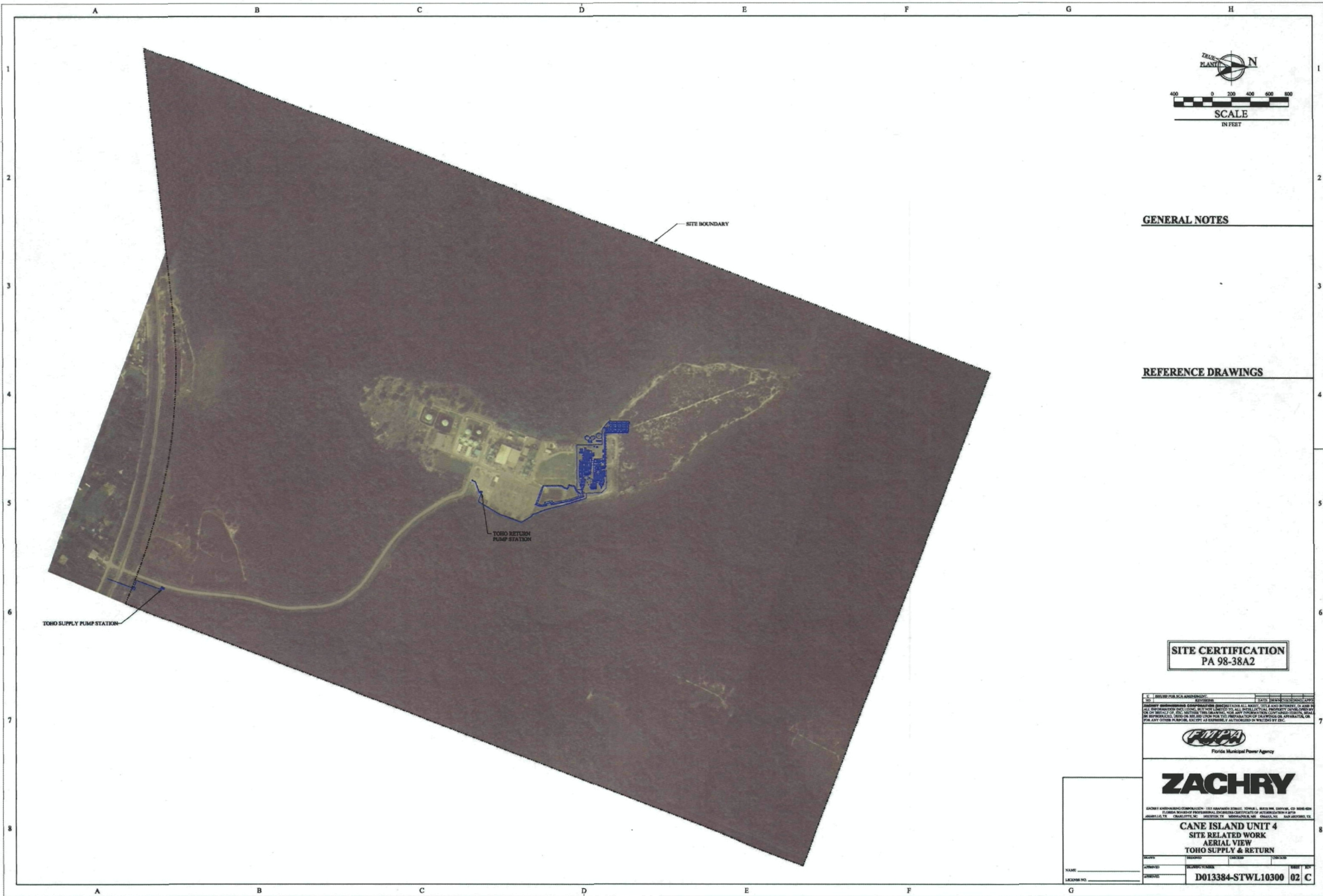
PROFESSIONAL SEAL AND SIGNATURE OF ENGINEER



ZACHRY

CANE ISLAND UNIT 4
SITE RELATED WORK
GENERAL ARRANGEMENT
TOHO SUPPLY & RETURN

DATE: 11/11/09
DRAWN BY: J. S. S. S.
CHECKED BY: J. S. S. S.
SCALE: AS SHOWN
PROJECT NO.: D013384-STWL10300 01 A



GENERAL NOTES

REFERENCE DRAWINGS

SITE CERTIFICATION
PA 98-38A2

C. REVIEW FOR PUBLIC ADMINISTRATION: REVIEWED DATE: 08/11/00
 DESIGNER: DATE: 08/11/00
 ALL INFORMATION CONTAINED HEREIN IS THE PROPERTY OF ZACHRY GROUP, INC. AND IS NOT TO BE REPRODUCED OR TRANSMITTED IN ANY FORM OR BY ANY MEANS, ELECTRONIC OR MECHANICAL, INCLUDING PHOTOCOPYING, RECORDING, OR BY ANY INFORMATION STORAGE AND RETRIEVAL SYSTEM, WITHOUT THE WRITTEN PERMISSION OF ZACHRY GROUP, INC. THIS DOCUMENT IS UNCLASSIFIED AND IS NOT SUBJECT TO THE AUTOMATIC DOWNGRADING AND DECLASSIFICATION SCHEDULE OF EXECUTIVE ORDER 13526, WHICH APPLIES TO INFORMATION THAT IS DETERMINED TO BE UNCLASSIFIED INFORMATION. UNLESS INDICATED OTHERWISE, THIS DOCUMENT IS UNCLASSIFIED AND IS NOT SUBJECT TO THE AUTOMATIC DOWNGRADING AND DECLASSIFICATION SCHEDULE OF EXECUTIVE ORDER 13526.



ZACHRY

ZACHRY GROUP INCORPORATED 100 HAZARDEN STREET, SUITE 1, WILSON, MISSISSIPPI 39370-4004
 ZACHRY GROUP INTERNATIONAL INCORPORATED 100 HAZARDEN STREET, SUITE 1, WILSON, MISSISSIPPI 39370-4004
 ZACHRY GROUP INTERNATIONAL INCORPORATED 100 HAZARDEN STREET, SUITE 1, WILSON, MISSISSIPPI 39370-4004

CANE ISLAND UNIT 4
SITE RELATED WORK
AERIAL VIEW
TOHO SUPPLY & RETURN

SCALE	DESIGNED	CHECKED	DATE
DRAWN	DATE	DATE	DATE
PROJECT NO.	D013384-STWL10300 02 C		