



LEE COUNTY
SOUTHWEST FLORIDA

BOARD OF COUNTY COMMISSIONERS

Bob Janes
District One

A. Brian Bigelow
District Two

Ray Judah
District Three

Tammy Hall
District Four

Frank Mann
District Five

Donald D. Stilwell
County Manager

David M. Owen
County Attorney

Diana M. Parker
County Hearing
Examiner

Mr. Mike Halpin, P.E.
Department of Environmental Protection,
Siting Coordination Office
3900 Commonwealth Blvd. MS#48
Tallahassee, Florida 32399-3000

(Note: Revisions shown in bold italics.)

**Re: Lee County Solid Waste Energy Recovery Facility, PA 90-30G
Notice of Proposed Amendment to Power Plant Site Application**

Dear Mr. Halpin:

Lee County is hereby notifying the Florida Department of Environmental Protection (FDEP) – Siting Office of a proposed amendment to its Power Plant Site Application for the Solid Waste Energy Recovery Facility (SWERF). The SWERF, certified as a mass burn resource recovery facility, is located at 10500 Buckingham Road, Ft. Myers, Florida 33905.

The proposed amendment includes an expansion of the existing Recovered Material Processing Facility (RMPF), the relocation (and construction) of the Construction and Demolition Debris (C&D) recycling facility, and construction of a new Vehicle Maintenance Facility (VMF).

The RMPF expansion will consist of an expanded tipping floor and building extension to house equipment designed to receive, separate and process single-stream recyclable material (i.e., commingled fiber and containers) so that it can be further sorted and baled through the RMPF's existing two-stream sort lines and balers (i.e., fiber and containers). Upon completion of this project, all new and existing equipment will operate as a unified system. The conversion to single stream recycling capability is intended to enhance recycling participation rates, as well as gain efficiency in curbside pickup from residents and businesses in the County.

The C&D recycling facility will be used to segregate and market recyclable construction materials, thereby providing the environmental benefit of conserving resources and landfill space. Finally, the VMF will provide an improved facility for the maintenance of vehicles associated with our fleet of residue (ash) haul vehicles, solid waste transfer trucks and other associated solid waste mobile equipment.

The RMPF, C&D recycling facility, and VMF are considered associated facilities of the SWERF because of their interdependency relationship to our integrated solid waste management system. Additional information about the proposed RMPF expansion, C&D recycling facility, and VMF, to include storm water management plans and operating

January 26, 2009
Revised February 17, 2009
RECEIVED

FEB 23 2009

BUREAU OF AIR REGULATION

Mr. Halpin
February 17, 2009
Page 2 of 2

plans, will be submitted to the FDEP and other affected agencies as required.

The attached recent site photo shows the approximate locations and footprints of the proposed new and modified solid waste facilities. ***Additionally, "Attachment A" hereto includes a summary description of each proposed associated facility and an updated proposed site plan (Dwg. G1, sheet 1 of 4, Rev. 1 dated 2/2009). We have also attached correspondences between Lee County and the Power Plant Siting Office related to previous Site Application amendments.***

If you have any questions or need additional information, please call me at (239) 533-8000, or e-mail address sampsolj@leegov.com.

Sincerely,



Lindsey J. Sampson, Director
Solid Waste Division

Attachments

cc: Don Castro, HDR
Jim Lavender, Lee PW Director
Distribution List, See Attached
Cindy Mulkey, DEP Power Plant Siting
Charles Emery, DEP South District
II A 403

DISTRIBUTION LIST

Al Linero

Administrator of New Source Review
Bureau of Air Regulations, DEP
2600 Blair Stone Rd., MS 5500
Tallahassee, Florida 32399

Charles Emery
Department of Environmental Protection
2295 Victoria Ave., Suite 364
Ft. Myers, Fl. 33901

Sandra Whitmire
Intergovernmental Coordination & Review Coordinator
Department of Transportation
605 Suwannee St., MS 28
Tallahassee, Fl. 32399

Paul Darst, Planner
Department of Community Affairs
2555 Shumard Oak Blvd.
Tallahassee, Fl. 32399

Jim Golden
South Florida Water Management District
3301 Gun Club Rd.
West Palm Beach, Fl. 33406

David Y. Burr, Executive director
Southwest Florida Regional Planning Council
4980 Bayline Dr.
North Ft. Myers, Fl. 33917

W. Dexter Bellamy, Ph.D.
5548 Hamlet Lane
Ft. Myers, Fl. 33919

“Attachment A”
Proposed Facility Descriptions
February 17, 2009

**PROPOSED EXPANSION TO THE EXISTING RECOVERED MATERIALS
PROCESSING FACILITY (RMPF)**

Existing Operation

The Lee County RMPF is housed in an approximate 60,000 SF building in the southwest quadrant of the SWERF Site. Recycle material from local residents and businesses is received in two streams, fiber products and container products. Fiber includes paper, cardboard, magazines, phone books, fiberboard, etc. Containers include glass bottles, aluminum and steel cans, plastic containers (#1 - #7), etc. The respective two-stream materials are routed through various conveyors and equipment providing for mechanical, optical, and manual sorting. Sorted materials are prepared for transport in both baled and bulk (loose) form. The RMPF is currently processing approximately 60,000 tons per year.

Proposed Expansion

Lee County proposes to add approximately 30,000 SF to the RMPF building on the north and south ends of the existing building in areas that are currently paved. The building expansion will allow the County to install additional equipment that will provide a “single-stream” sort scenario, i.e., recycling material may be received as one mixed material including both fiber and containers. Most studies have shown that a conversion to single-stream material acceptance results in a 10%-30% increase of recycling material. The new equipment will separate the fiber from the containers such that additional individual material sorts may be performed with the existing equipment.

Land Area Requirements

In addition to the building expansion, Lee County will expand the existing paved road area on the east and south sides of the building by approximately 30,000 SF in upland areas. The County will submit storm water management changes to the South Florida Water Management District if the proposed expansion has any impacts on the existing storm water requirements of the SWERF Site Conditions of Certification.

Site Requirements

The proposed RMPF expansion has access to necessary utilities including reclaim water, electricity, sewer and potable water. The existing paved access road to RMPF will be slightly expanded on the east and south sides of the building. Existing traffic patterns at the SWERF site will be maintained.

Process Operation

Single-stream co-mingled recycling material (generated recycle materials, not municipal solid waste) will be received from residential and commercial collection trucks on a new tipping floor. The material will be pushed onto a conveyor charging a cardboard (OCC)

screen. Overs and unders from the OCC screen will be sent to other conveyors, screens and manual sort stations prior to being introduced to the existing two-stream material sort lines. The RMPF will produce segregated recycling materials ready for market as is currently the case.

PROPOSED CONSTRUCTION AND DEMOLITION (C&D) DEBRIS RECYCLING FACILITY

Existing Operation

The County's Solid Waste Energy Recovery Facility (SWERF) currently receives very little C&D material. Most C&D material generated in southwest Florida is disposed at private C&D landfills. Truck-loads of C&D that do come to the SWERF are unloaded at the existing on-site transfer station. Nominal recycling occurs at the transfer building including hand separation of ferrous metal and loader separation of concrete/block material. The remaining materials are pushed into two piles and either transferred to the County's class III landfill (if non-combustible) or to the SWERF (if combustible and not oversize).

Proposed Location

Lee County proposes to locate the new C&D recycling facility in an upland area within the northeast quadrant of the SWERF site, just east of the existing yard waste mulching area.

Land Area Requirements

The proposed C&D recycling site is approximately 5 acres on upland land previously used as an equipment lay-down area during construction of the SWERF. The processing equipment and recycled material storage bunkers will require approximately 1 acre. Additional area will be required for receiving trucks, storing unprocessed material, pre-sort activities and recycling load out activity, etc. The remaining area will consist of access roads and a storm water detention pond, if required.

Site Requirements

The proposed C&D recycling facility has access to necessary utilities including reclaim water, electricity, sewer and potable water. The existing paved access road to the yard waste processing area provides access to the proposed C&D recycling facility. The location of the C&D recycling facility will allow for the continuance of existing traffic patterns at the SWERF site.

Lee County will submit a storm water management plan to the South Florida Water Management District for review and approval prior to construction. The plan will incorporate all requirements established by the Site Conditions of Certification.

Process Operation

Incoming vehicles will use the existing entrance and exit roadways through the main scale house. Incoming traffic will circle behind the WTE plant and enter the C&D

recycling facility receiving area to discharge loads. A spotter/loader operator will follow DEP rules in reviewing the loads inspecting for hazardous waste and/or other non C&D materials. Customers will be required to remove any of their own hazardous waste materials from the property.

A track-hoe with grapple will load the C&D material into the processing equipment. This equipment will consist of a series of conveyors, screens, magnets, and manual sorting stations designed for effective separation of wood, metal, cardboard, screened dirt, concrete, and other specific materials designated for recycling. Residue materials will be sorted as to inert (non-combustible) or combustible. Sorted recycled material will be marketed. Combustible residue will go to the SWERF and non-combustible residue will go to the County's Class III landfill.

The processing equipment will be designed to provide a 50% recycling rate, depending on incoming material composition. Lee County will submit a C&D recycling facility Operations Plan to the DEP, South District Office for review and approval prior to construction.

PROPOSED VEHICLE MAINTENANCE FACILITY (VMF)

Existing Operation

The Lee County Solid Waste Division owns trucks and trailers that are used for transporting SWERF ash to its landfill, municipal solid waste from its Hendry County transfer stations and by-pass waste to its landfill (Class I and Class III). Off-road equipment is used for general solid waste activities including yard-waste processing, tire processing, transfer station operations, etc. Currently the Division performs certain maintenance duties on these vehicles and stores spare parts, tires, and wheels, etc., at the transfer station.

Proposed Location

Lee County proposes to locate a new maintenance and storage building in an upland area in the northwest quadrant of the SWERF Site, just south of the tire processing area.

Land Area Requirements

Lee County proposes to build an approximate 9,000 SF building (say 15,500 SF area w/ concrete aprons/drives, etc.) for the purpose of maintaining Solid Waste Division rolling equipment. The proposed building will be located in an upland area currently used to park the Division's rolling equipment.

Site Requirements

The proposed maintenance facility has access to necessary utilities including reclaim water, electricity, sewer and potable water. The existing paved access road to the transfer station provides access to the proposed maintenance facility. The location of the maintenance facility will allow for the continuance of existing traffic patterns at the SWERF site.

Lee County will submit a storm water management plan to the South Florida Water Management District for review and approval prior to construction. The plan will incorporate all requirements established by the Site Conditions of Certification.

Process Operation

The maintenance facility will be used to perform repairs and general maintenance tasks on the Division's trucks, trailers, off-road equipment, etc. It will also contain spare parts, tires, wheels, and other equipment necessary for the proper maintenance of rolling equipment.



EXISTING MSW TRANSFER STATION

EXISTING HORTICULTURAL PAD

RELOCATED C&D RECYCLING AREA

WASTE-TO-ENERGY FACILITY

PROPOSED NEW VEHICLE MAINTENANCE FACILITY

SCALE HOUSE

EXISTING RMPF

PROPOSED RMPF EXPANSION

HDR

9400 Bay Center Dr., Suite 400
Tampa, Florida 33634
813.282.2200
HDR CERT AUTH. NO. GA 4213
FL REG. NO. 000467

ISSUE	DATE	DESCRIPTION

PROJECT MANAGER	DON CASTRO
DESIGNER	
PROJECT NUMBER	

LEE COUNTY SOLID WASTE PROCESSING SITE

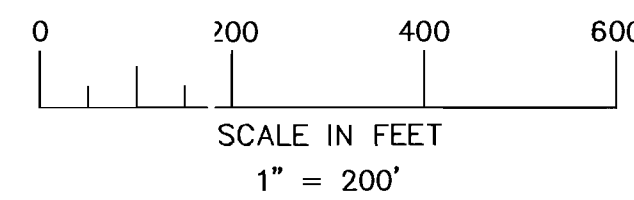
AERIAL PHOTOGRAPH WITH PROPOSED SITE IMPROVEMENTS - JANUARY 2009



FILENAME	AERIAL OF SITE.DWG
SCALE	1"=10'

SHEET	FIGURE 1
-------	----------

0710119



SURVEY PROVIDED BY IJK ENGINEERING, INC. 1992

SYMBOLS

- ⊙ DENOTES FOUND REBAR & C/P L.B. 3664
- ✂ DENOTES FOUND CONCRETE MONUMENT L.B. 3664
- DENOTES FOUND CONCRETE MONUMENT

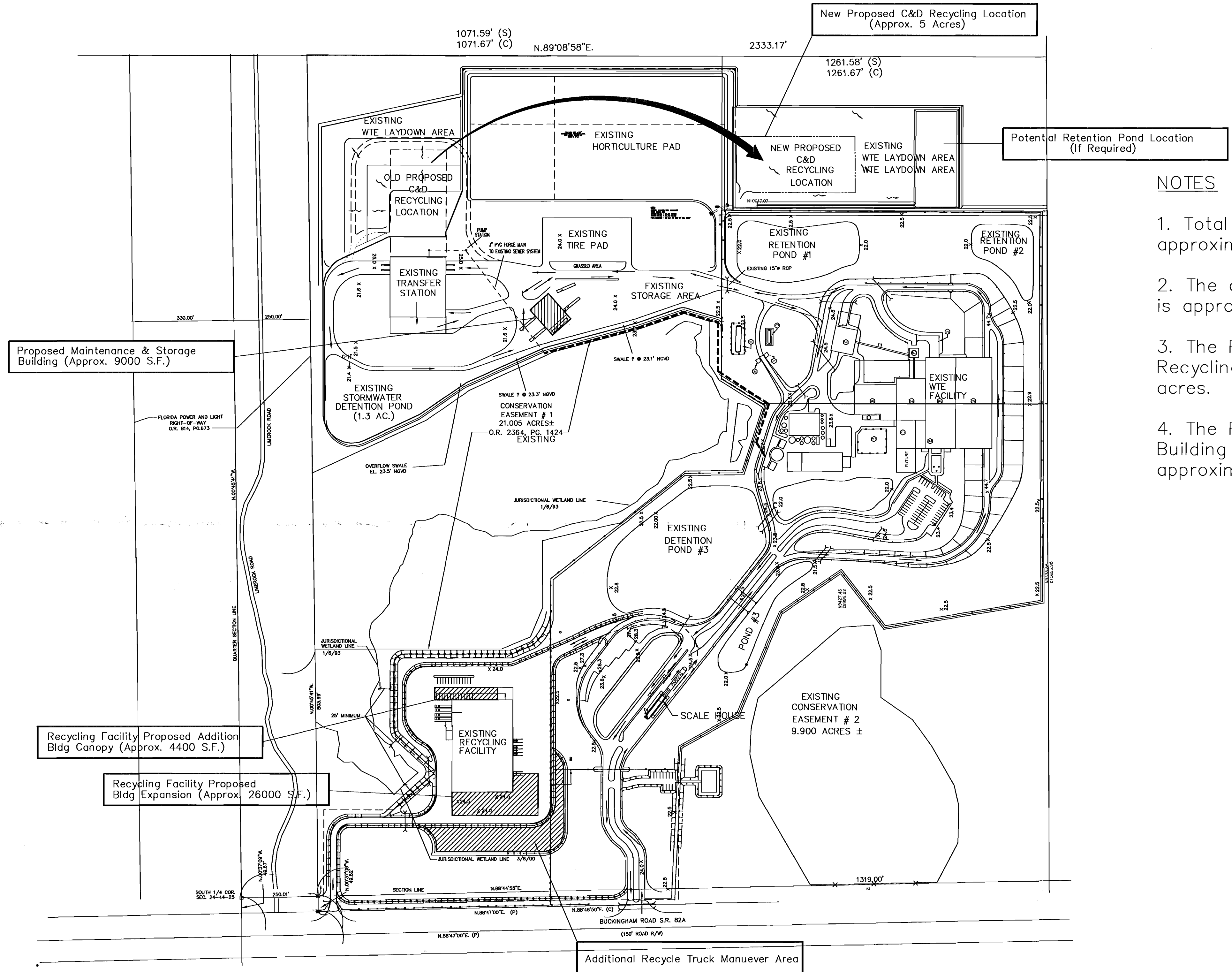
LEGEND:

- T. TOWNSHIP
- R. RANGE
- L.B. LICENSED BUSINESS
- (C) CALCULATED DIMENSION AS SHOWN C4 SURVEY
- (P) FOUND
- CR CORNER
- S.R. STATE ROAD
- MON MONUMENT
- ELEV. ELEVATION
- M.W. MONITORING WELL

SURVEYOR'S NOTES

1. ELEVATIONS SHOWN (IF ANY) ARE BASED ON NATIONAL GEODETIC VERTICAL DATUM (N.G.V.D.) US GEOLOGICAL SURVEY BENCHMARK "51 WIM 1952" SURVEYOR'S NOTES
2. SURVEY BASED ON FOUND MONUMENTATION AS ESTABLISHED BY OTHERS. REFERENCE IS MADE TO A BOUNDARY SURVEY OF PART OF SECTIONS 24 AND 25, TOWNSHIP 44 SOUTH, RANGE 25 EAST, PERFORMED BY AGNOLI, BARBER & BRUNDAGE, INC., AND DATED JUNE 22, 1990.
3. BOUNDARY INFORMATION IS SHOWN FOR REFERENCE ONLY. VERIFICATION OF PREVIOUS BOUNDARY SURVEY BY AGNOLI, BARBER & BRUNDAGE, INC. NOT INCLUDED UNDER THE SCOPE OF THIS SURVEY.

* BASE PLAN PROVIDED BY MALCOLM PIRNIE MODIFIED BY LEE COUNTY SOLID WASTE DIVISION



NOTES

1. Total site area is approximately 280 ac.
2. The certified site area is approximately 145 ac.
3. The Proposed C&D Recycling area is approx. 5 acres.
4. The Proposed Recycling Building Expansion is approximately 26,000 S.F.

User: TILMAN Spec: PIRNIE STANDARD File: P:\Lee County\Soild Waste\1971036 Transfer Station\Deliverables\Drawings\1971036.DWG Scale: 1:1 Date: 11/06/2002 Time: 15:45 Layout: Layout1



REVISIONS			
NO.	BY	DATE	REMARKS
1	MSA	2/2009	PROPOSED ADDITIONSTO FACILITY SITE LAYOUT

DES RHF
DWN CCT
OKD RHF

LEE COUNTY SOLID WASTE DIVISION
FORT MYERS, FL
LEE COUNTY WTE FACILITY
1971-036

LEE COUNTY WTE FACILITY SITE PLAN
SITE PLAN
PROPOSED ADDITIONS
1" = 200'

COPYRIGHT © 2002
MALCOLM PIRNIE, INC.
DATE 11/01/2002
G1 SHEET 1 OF 4
CAD REF. NO. 1971G005