

Solid Waste Resource Recovery Facility
Lee County Florida



Lee County Solid Waste Division
1500 Monroe Street
Fort Myers, Florida 33902

8/15/01

LEE COUNTY RESOURCE RECOVERY FACILITY PROJECT SUMMARY

Municipal solid waste from Lee County and Hendry County is disposed of at the Lee County Solid Waste Resource Recovery Facility (the "Facility"). Lee County (the "County") owns the Facility, which began commercial operation in December 1994. The Facility's current permitted capacity is 1,320 tons per day (tpd), provided by two 660-tpd boiler units, at a reference waste of 5000 Btu. Covanta Energy of Lee, Inc ("Covanta", formerly Ogden Martin Systems of Lee, Inc.) operates and maintains the Facility under the terms of a Service Agreement with the County that runs through 2014. Covanta also designed and constructed the Facility. The Facility location and site plan are provided on the following pages.

Despite the County's comprehensive recycling program, the amount of solid waste the County delivers to the Facility has increased each year since the Facility began operation, primarily due to population growth. In 1999, this amount reached the Facility's guaranteed annual capacity of 372,300 tons. In 2000, the Facility processed over 392,000 tons of County waste, while the County landfilled nearly 44,000 additional tons of processible waste. Current population projections for Lee and Hendry Counties suggest that processible solid waste generation will continue to increase, reaching nearly 550,000 tons by 2010.

Rather than landfilling processible waste generated in excess of the Facility's current capacity, it is the County's intention to expand the Facility by adding a third 660-tpd boiler unit which would increase the Facility's permitted capacity to 1,980-tpd. The original application for the Facility's Power Plant Site Certification anticipated such an expansion, including provisions for a third 660-tpd boiler unit. Certain provisions for this third unit were incorporated into the Facility's design and construction as well. These included providing the physical space for the third unit, the physical space for an additional flue for the third unit, and sizing the tipping floor, refuse pit, and certain common equipment for three units.

Notwithstanding, from a construction standpoint, the expansion will require a second turbine-generator unit and expanded switchyard, an extension to the existing turbine-generator building, as well as the addition of a third boiler unit and air pollution control equipment. The expansion will also require modifications to certain equipment and systems common to all boiler units in order to meet the additional capacity requirements of the expanded Facility. As the Facility operator, Covanta will perform the design, construction, start-up and testing services required for the expansion.

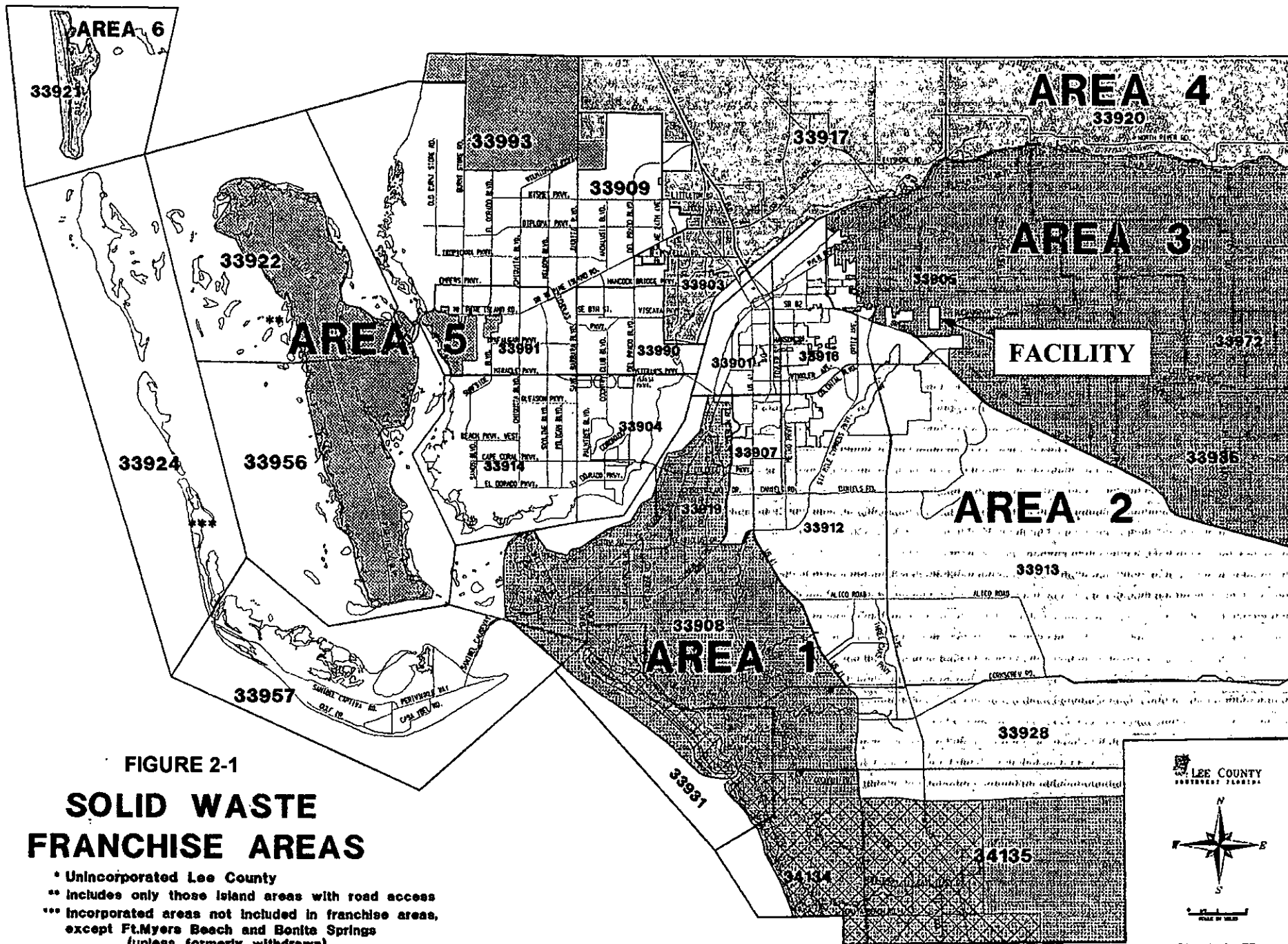


FIGURE 2-1

SOLID WASTE FRANCHISE AREAS

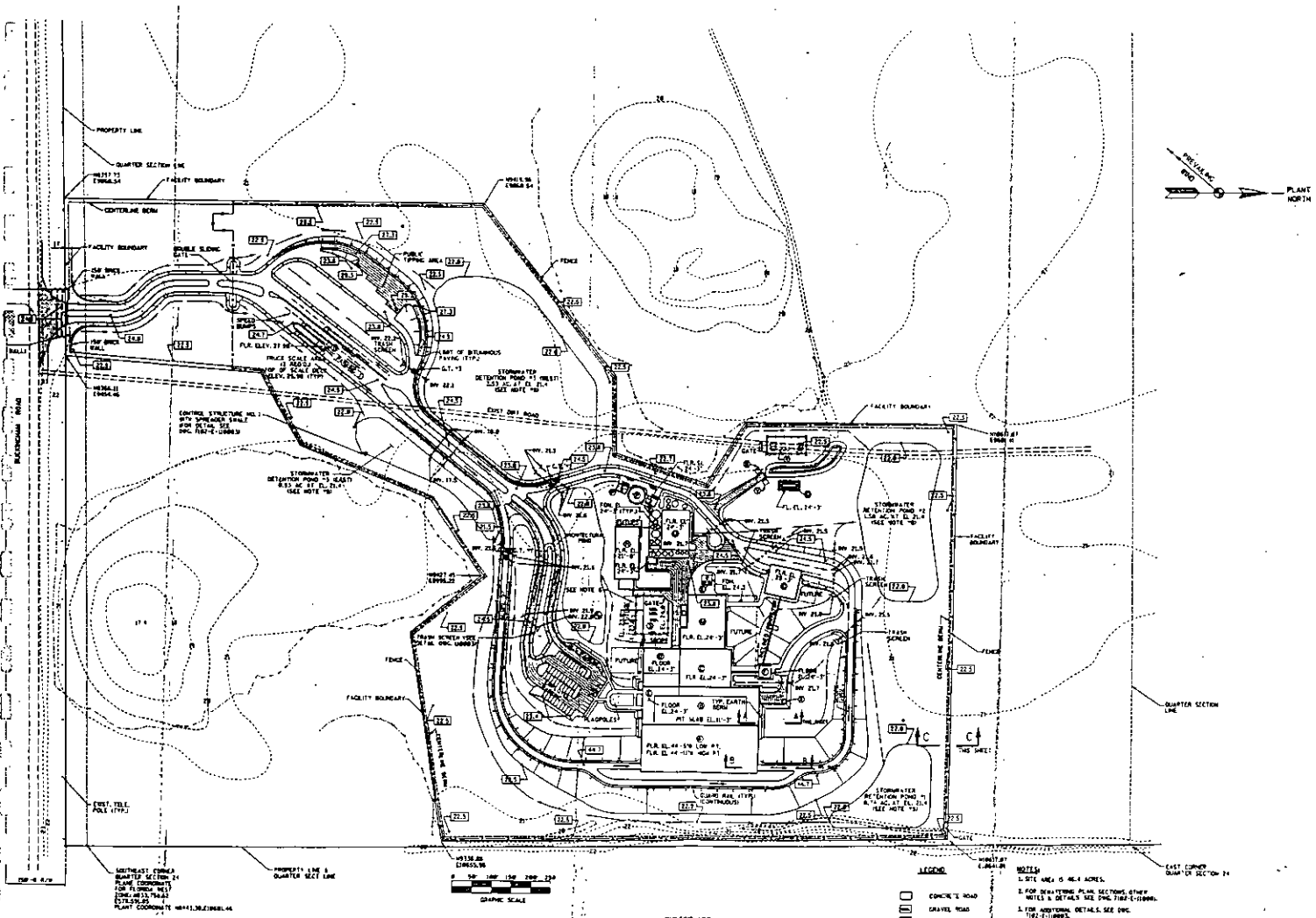
- * Unincorporated Lee County
- ** Includes only those island areas with road access
- *** Incorporated areas not included in franchise areas, except Ft. Myers Beach and Bonita Springs (unless formerly withdrawn)

☒ CITY of BONITA SPRINGS and FT. MYERS BEACH

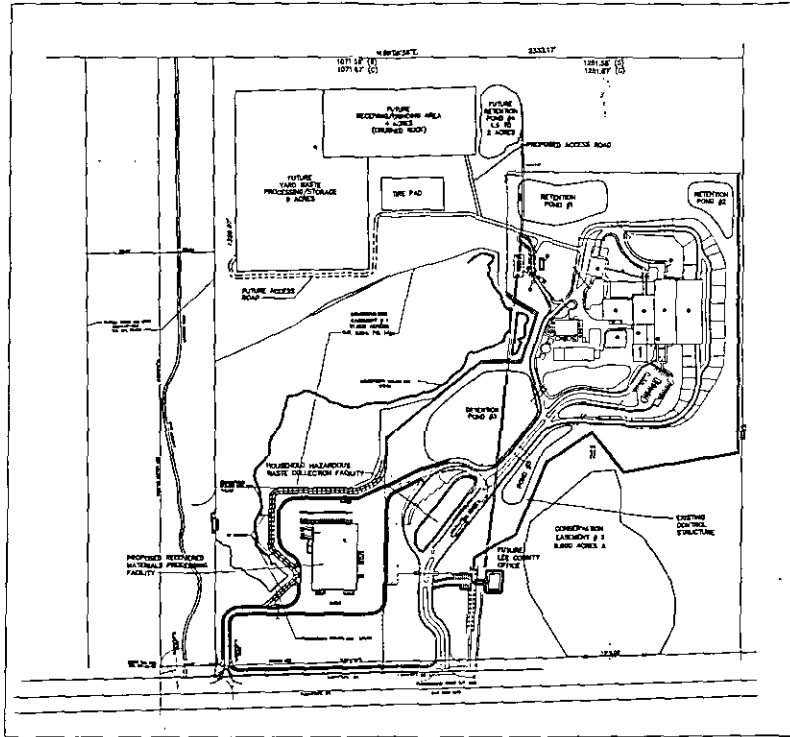
LEE COUNTY
SOUTHWEST FLORIDA

Scale of Map

Date printed: June 2002



REVISIONS
 1-11-58
 2-11-58
 3-11-58
 4-11-58
 5-11-58
 6-11-58
 7-11-58
 8-11-58
 9-11-58
 10-11-58
 11-11-58
 12-11-58
 13-11-58
 14-11-58
 15-11-58
 16-11-58
 17-11-58
 18-11-58
 19-11-58
 20-11-58
 21-11-58
 22-11-58
 23-11-58
 24-11-58
 25-11-58
 26-11-58
 27-11-58
 28-11-58
 29-11-58
 30-11-58
 31-11-58
 32-11-58
 33-11-58
 34-11-58
 35-11-58
 36-11-58
 37-11-58
 38-11-58
 39-11-58
 40-11-58
 41-11-58
 42-11-58
 43-11-58
 44-11-58
 45-11-58
 46-11-58
 47-11-58
 48-11-58
 49-11-58
 50-11-58
 51-11-58
 52-11-58
 53-11-58
 54-11-58
 55-11-58
 56-11-58
 57-11-58
 58-11-58
 59-11-58
 60-11-58
 61-11-58
 62-11-58
 63-11-58
 64-11-58
 65-11-58
 66-11-58
 67-11-58
 68-11-58
 69-11-58
 70-11-58
 71-11-58
 72-11-58
 73-11-58
 74-11-58
 75-11-58
 76-11-58
 77-11-58
 78-11-58
 79-11-58
 80-11-58
 81-11-58
 82-11-58
 83-11-58
 84-11-58
 85-11-58
 86-11-58
 87-11-58
 88-11-58
 89-11-58
 90-11-58
 91-11-58
 92-11-58
 93-11-58
 94-11-58
 95-11-58
 96-11-58
 97-11-58
 98-11-58
 99-11-58
 100-11-58



- LEGEND**
- CONCRETE ROAD
 - GRAVEL ROAD
 - ASPHALT ROAD
 - REINFORCED CONCRETE PAVEMENT
 - 25' TO 50' DISTANCE FOR LABORATORIAL SETBACK
 - 6" x 8" GRADEBENT TRAP
 - POLE
 - REINFORCED CONCRETE WALL
 - REINFORCED CONCRETE WALL
 - TYPICAL DITCH WALL
- EXISTING STRUCTURE**
- TYPING AREA
 - RECEPTION AREA
 - RECEPTION AREA
 - PLUMBING/ELECTRICAL AREA
 - PROPERTY MANAGEMENT OFFICE
 - GRASSY BUILDING
 - RECYCLE TREATMENT BUILDING
 - COOKING HOUSE
 - TRUCK
 - RECYCLING DRIVE
 - APC AREA
 - SCALE HOUSE
 - FIRE WATER TANK & PUMP HOUSE
 - WASTEWATER STORAGE
 - WASTEWATER STORAGE
 - RECYCLING
 - COMPOSITION BUILDING
 - WATER TREATMENT BUILDING
 - HARBOR LANDING STATION
 - PROPOSED BUILDING ON 10' ROW
 - DITCH ON TANK & PUMP STATION

NO.	DESCRIPTION	DATE
1	REVISION	
2	REVISION	
3	REVISION	
4	REVISION	
5	REVISION	
6	REVISION	
7	REVISION	
8	REVISION	
9	REVISION	
10	REVISION	

- NOTES**
1. ALL DIMENSIONS ARE IN FEET AND INCHES UNLESS OTHERWISE SPECIFIED.
 2. ALL DIMENSIONS ARE TO FACE UNLESS OTHERWISE SPECIFIED.
 3. ALL DIMENSIONS ARE TO CENTERLINE UNLESS OTHERWISE SPECIFIED.
 4. ALL DIMENSIONS ARE TO CENTERLINE UNLESS OTHERWISE SPECIFIED.
 5. ALL DIMENSIONS ARE TO CENTERLINE UNLESS OTHERWISE SPECIFIED.
 6. ALL DIMENSIONS ARE TO CENTERLINE UNLESS OTHERWISE SPECIFIED.
 7. ALL DIMENSIONS ARE TO CENTERLINE UNLESS OTHERWISE SPECIFIED.
 8. ALL DIMENSIONS ARE TO CENTERLINE UNLESS OTHERWISE SPECIFIED.
 9. ALL DIMENSIONS ARE TO CENTERLINE UNLESS OTHERWISE SPECIFIED.
 10. ALL DIMENSIONS ARE TO CENTERLINE UNLESS OTHERWISE SPECIFIED.

DESIGNED BY: M. ENGINEERING, INC. 1992

SYMBOL	DESCRIPTION
○	EXISTING FOUND
□	REVISION FOUND
○	AS SCALED FROM SURVEY
○	EXISTING FOUND
○	EXISTING FOUND
○	EXISTING FOUND

**MALCOLM
PIRNIE**

NO.	DESCRIPTION	DATE
1	REVISION	
2	REVISION	
3	REVISION	
4	REVISION	
5	REVISION	
6	REVISION	
7	REVISION	
8	REVISION	
9	REVISION	
10	REVISION	

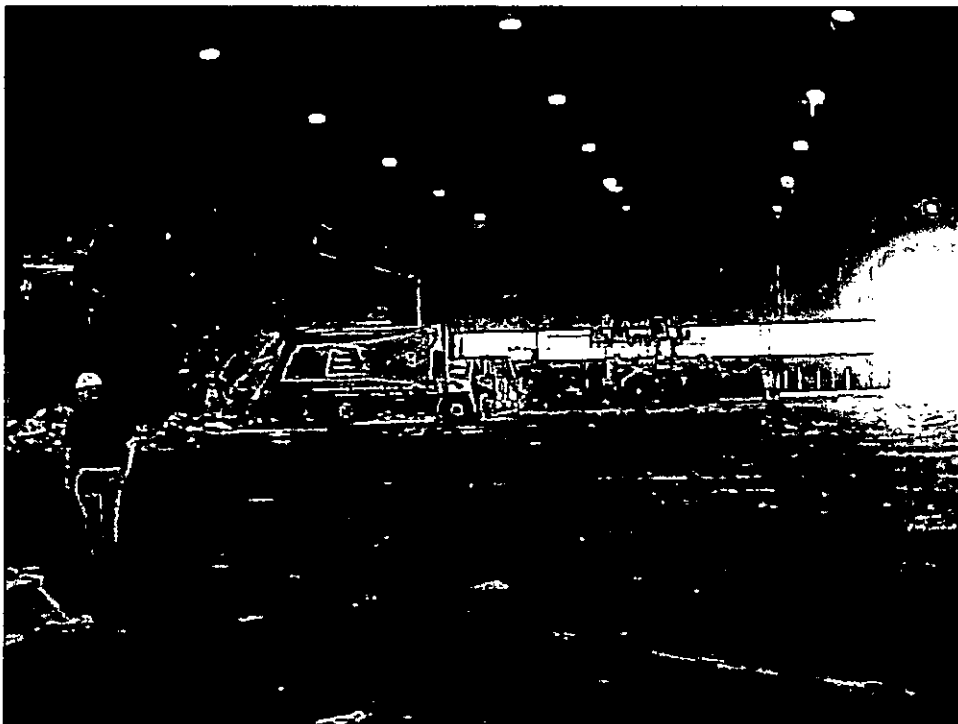
SOLID WASTE ENERGY RECOVERY FACILITY
LEE COUNTY, BUCKINGHAM RD.
FT. MYERS, FLORIDA

EXISTING AND PROPOSED SOLID
WASTE OPERATIONS
SCALE: 1"=200'

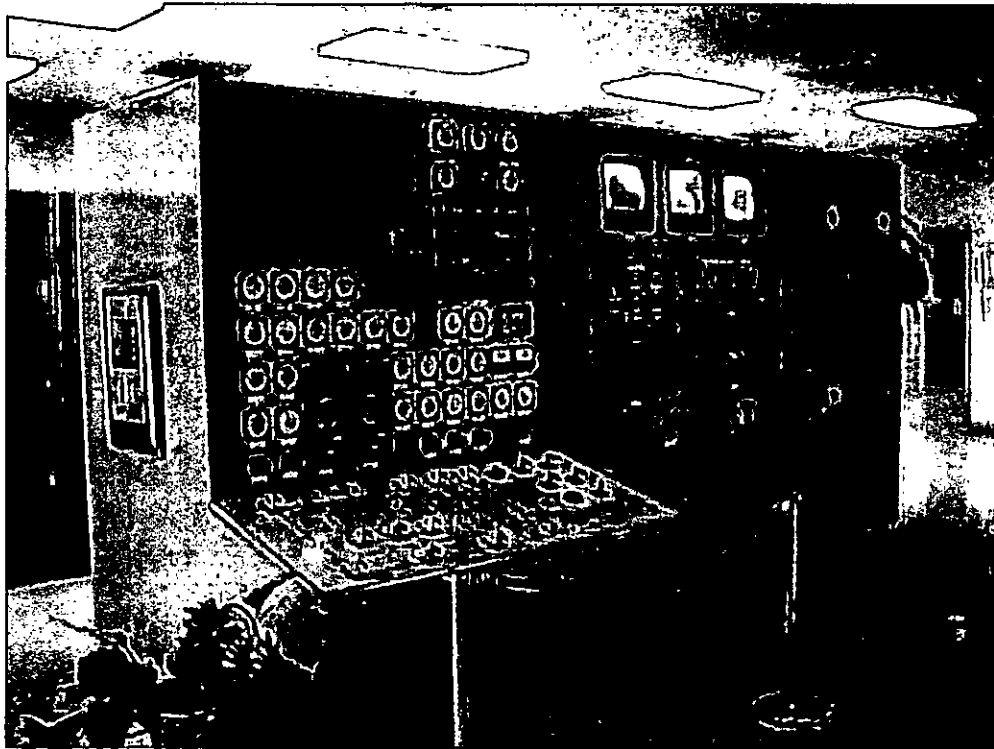
DATE: MARCH 27, 2000
SHEET: 1 OF 1
DWN BY: [Signature]



The refuse claw in action.



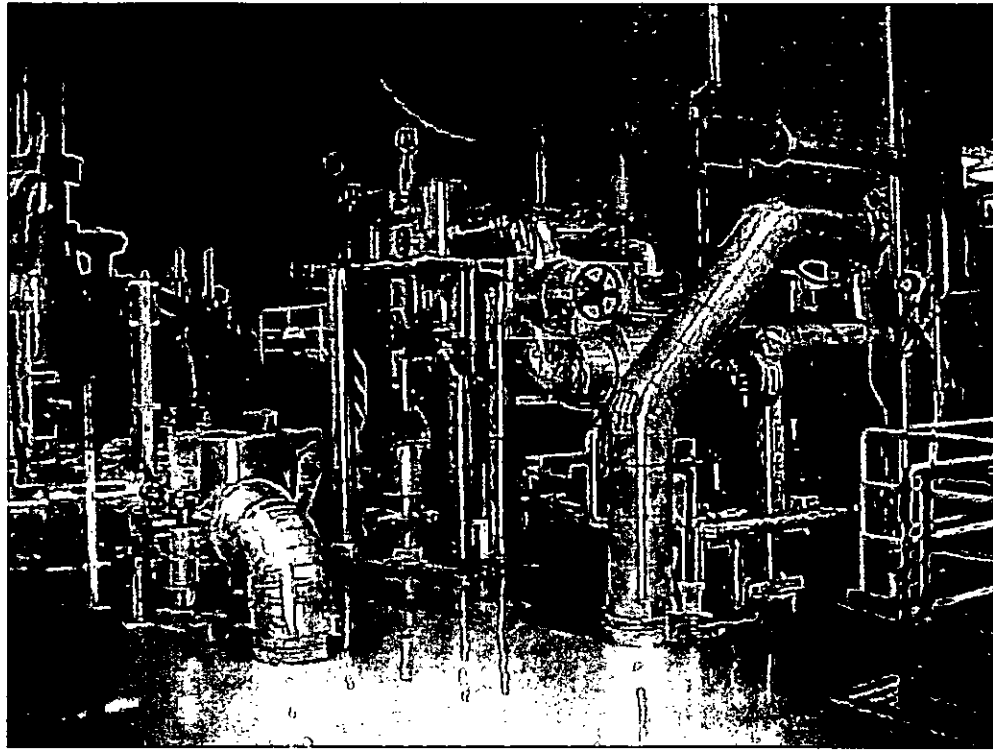
Facility tipping floor. The refuse pit is visible to the left.



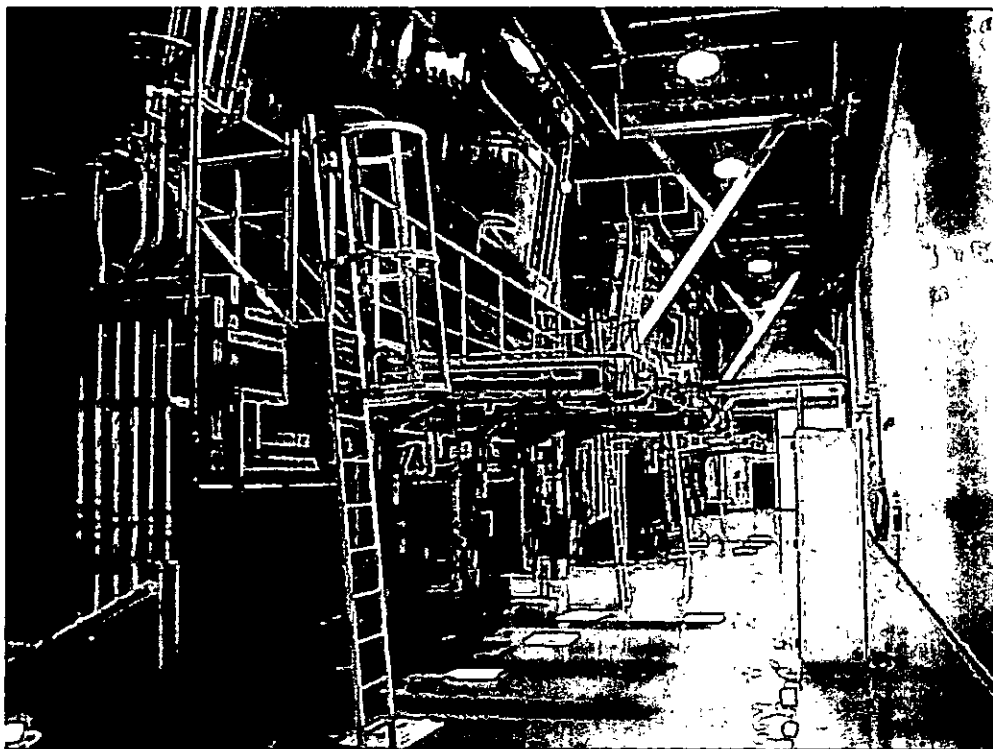
An array of instruments in the plant's control room.



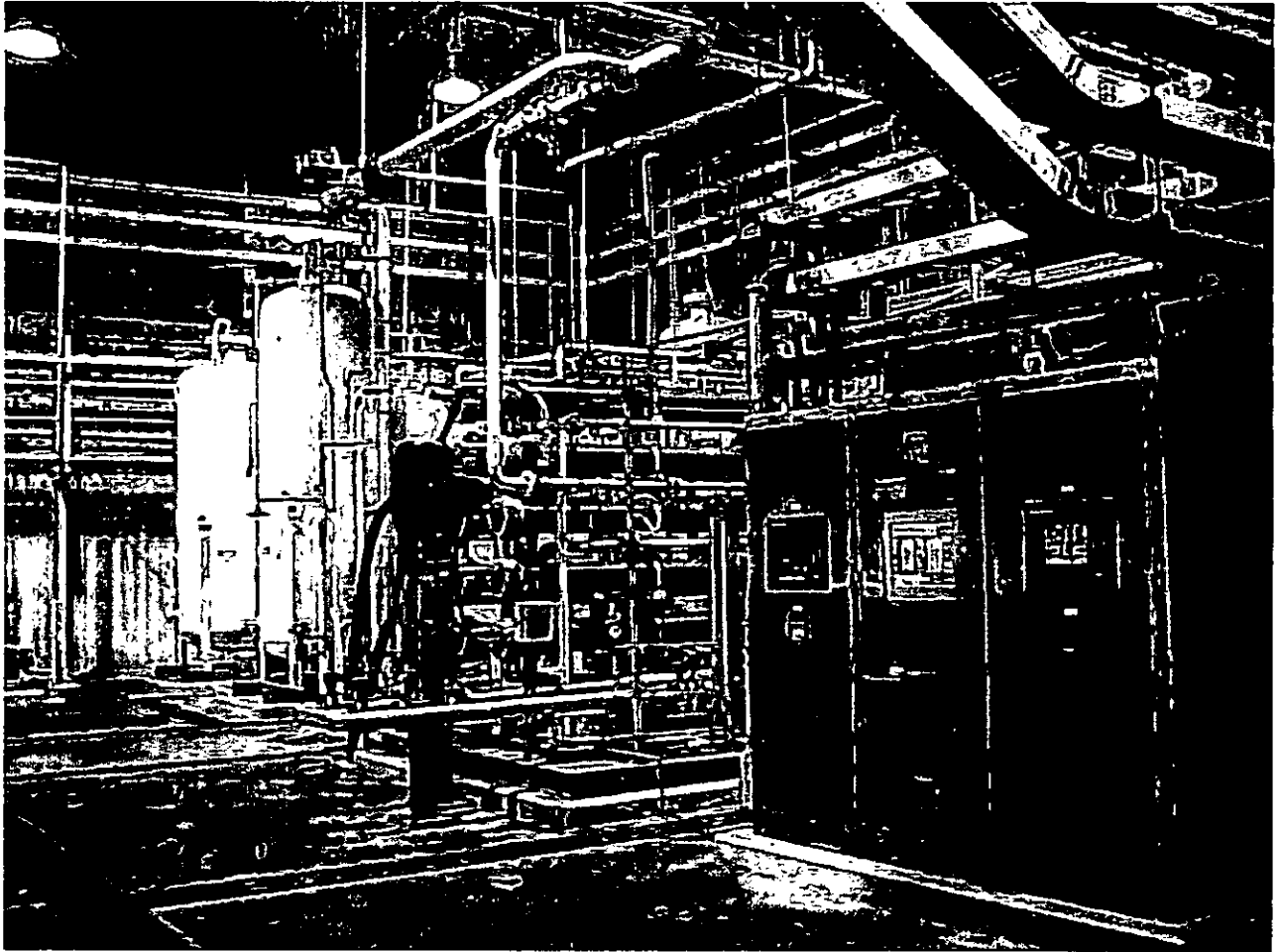
Facility staff monitor the plant's condition.



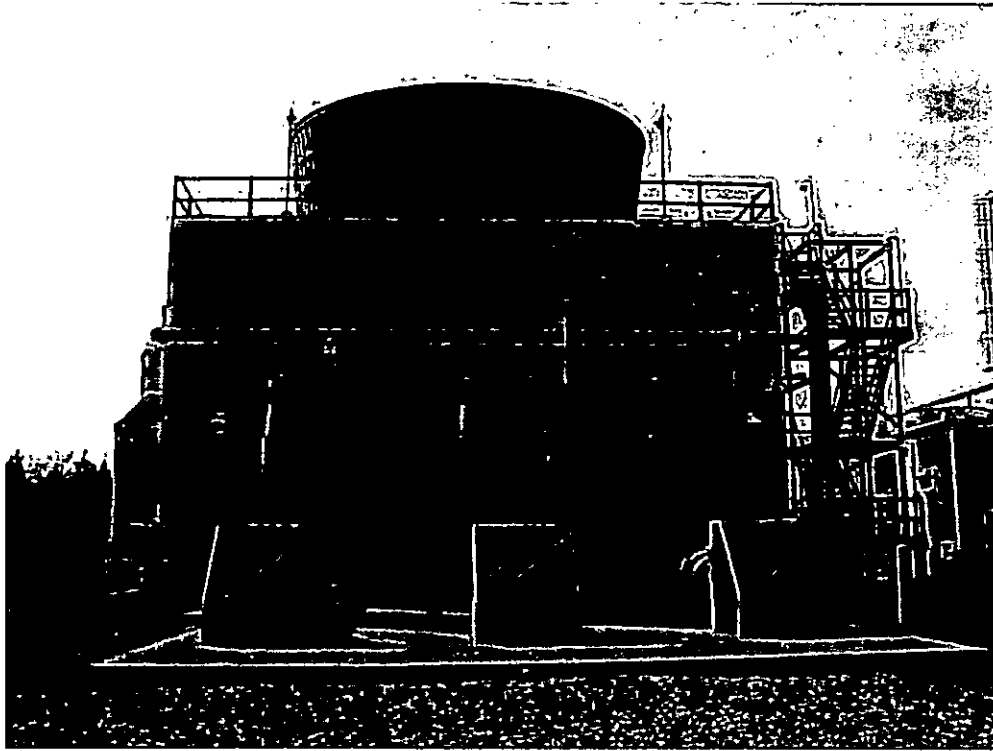
A view of plant piping. The polished sheen of the floor is visible.



Looking across the furnaces. The condition of this area is typical of many areas throughout the Facility.



The Facility's reverse osmosis plant.



View of the condenser circulating water pumps at the cooling tower.



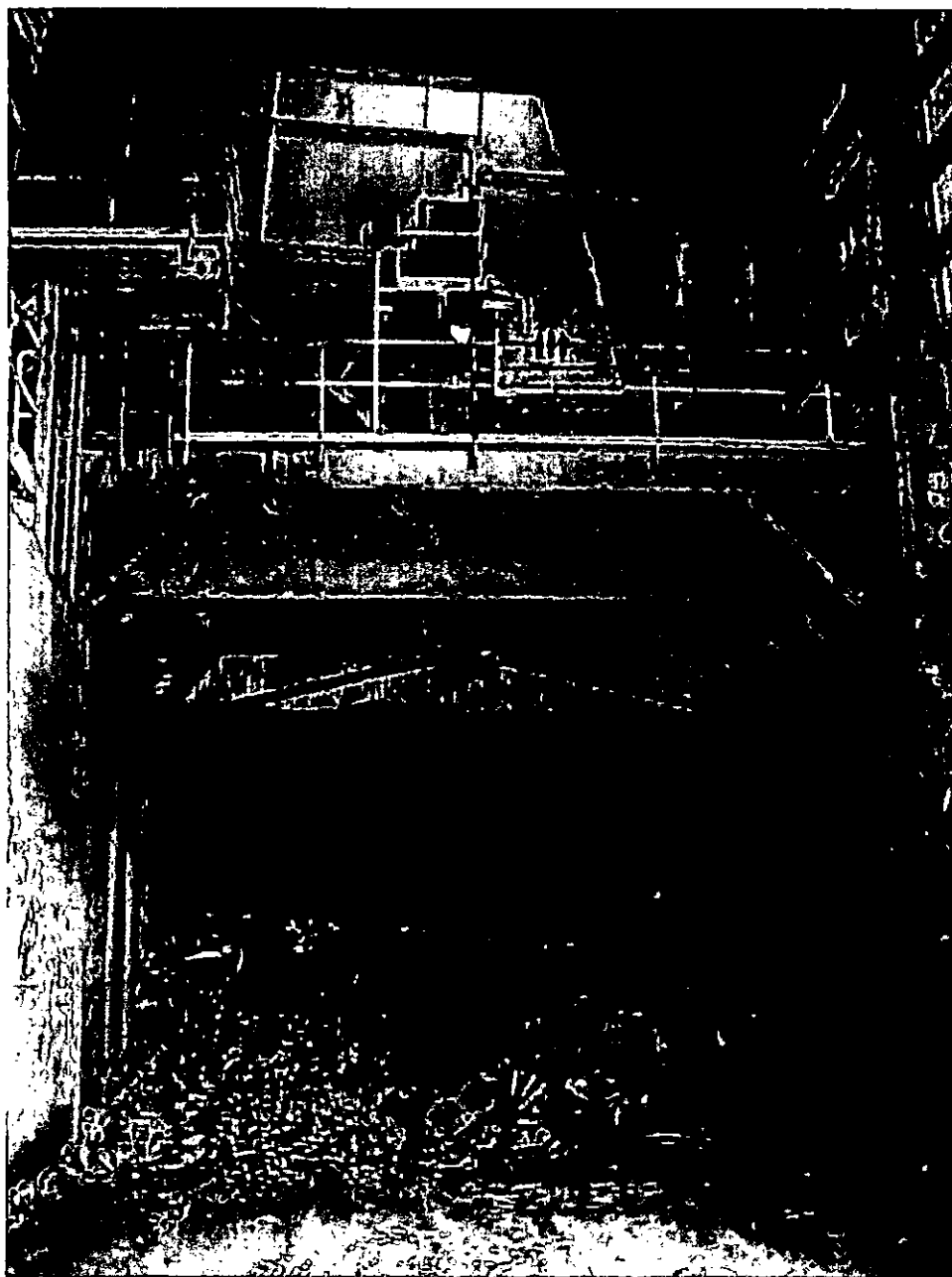
Side view of the pumps.



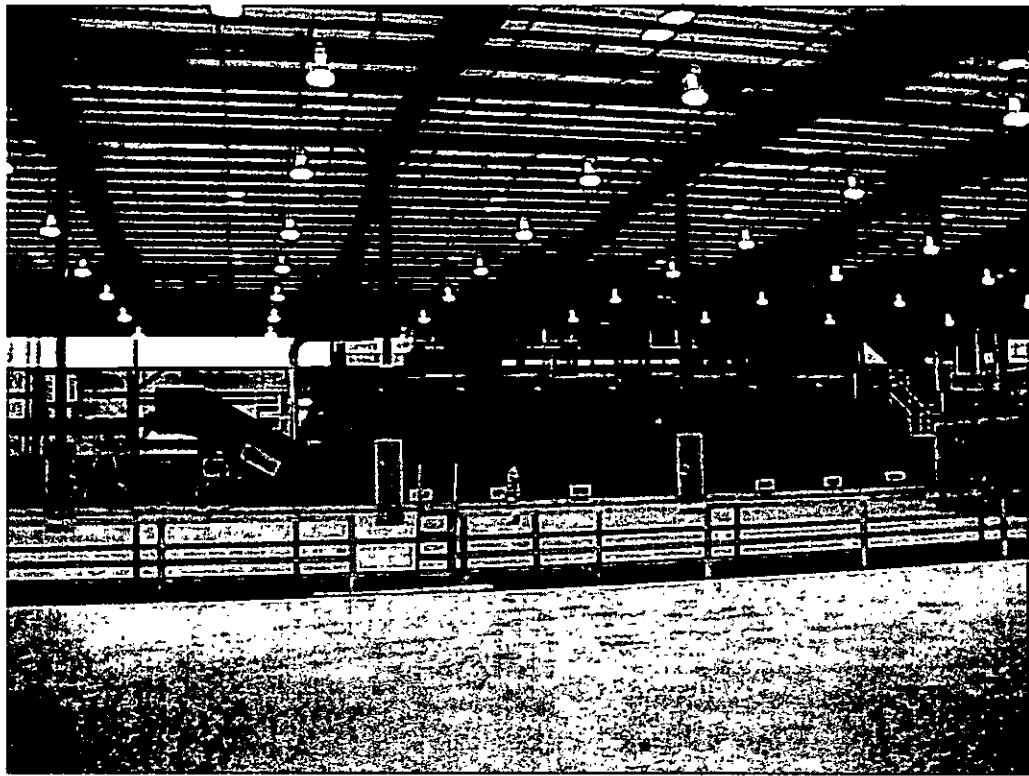
View of covered ash conveyor, ash / metals recovery building.



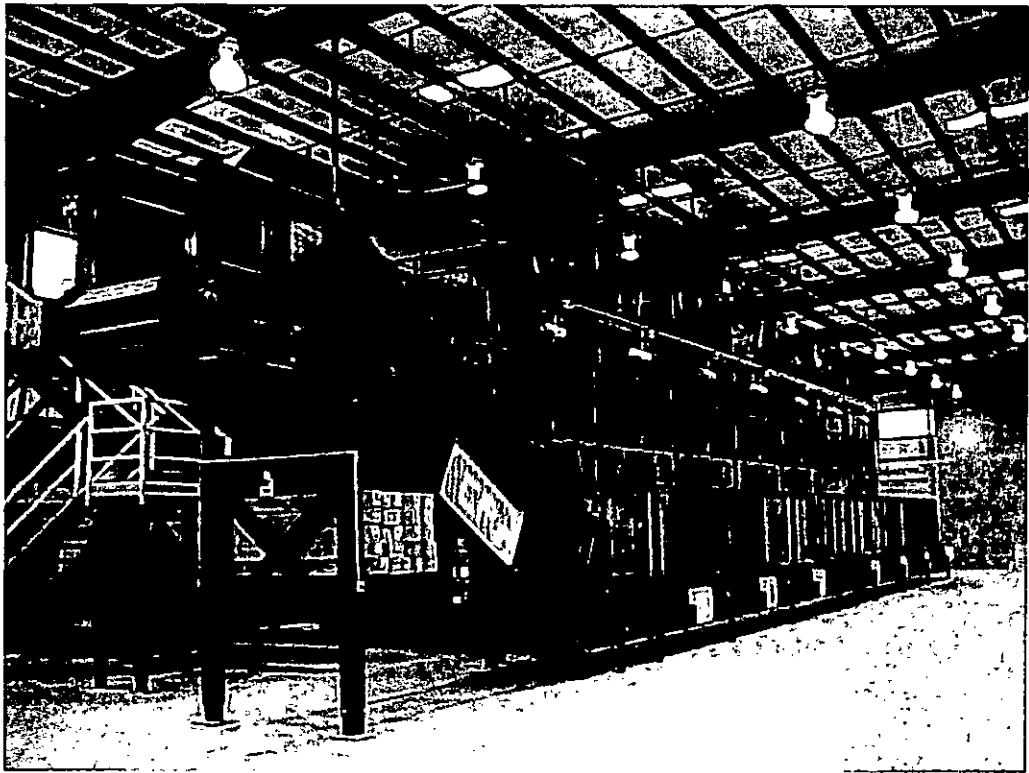
View of the non-ferrous metal recovery pile.



View of recovered ferrous metals.

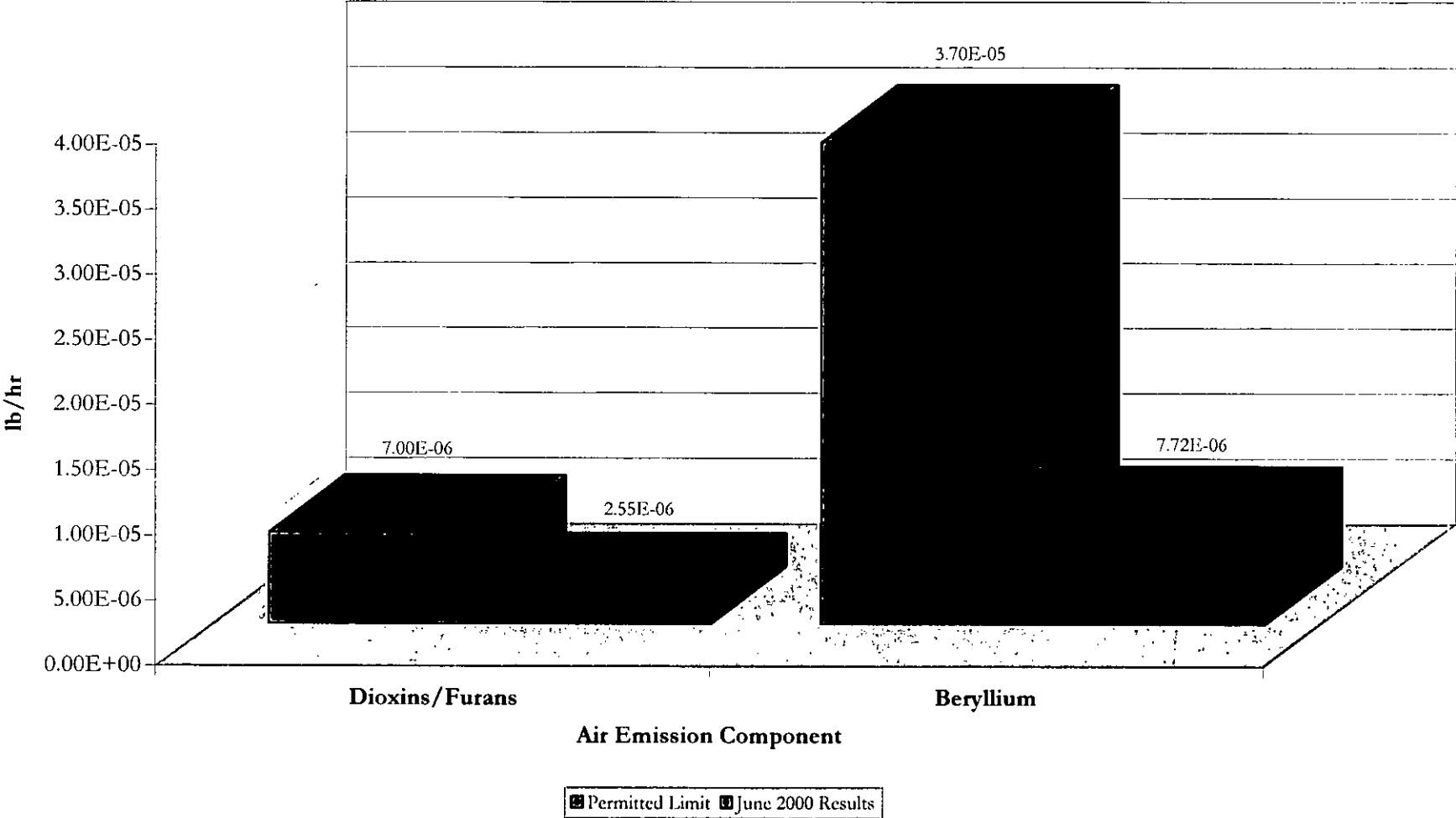


View of conveyor pit and co-mingled sort line at new RMPF.



View of co-mingled sort line at new RMPF.

**Figure 1-9
COMBINED STACK TEST RESULTS
June 2000**



**Figure 1-10
COMBINED STACK TEST RESULTS (cont.)
June 2000**

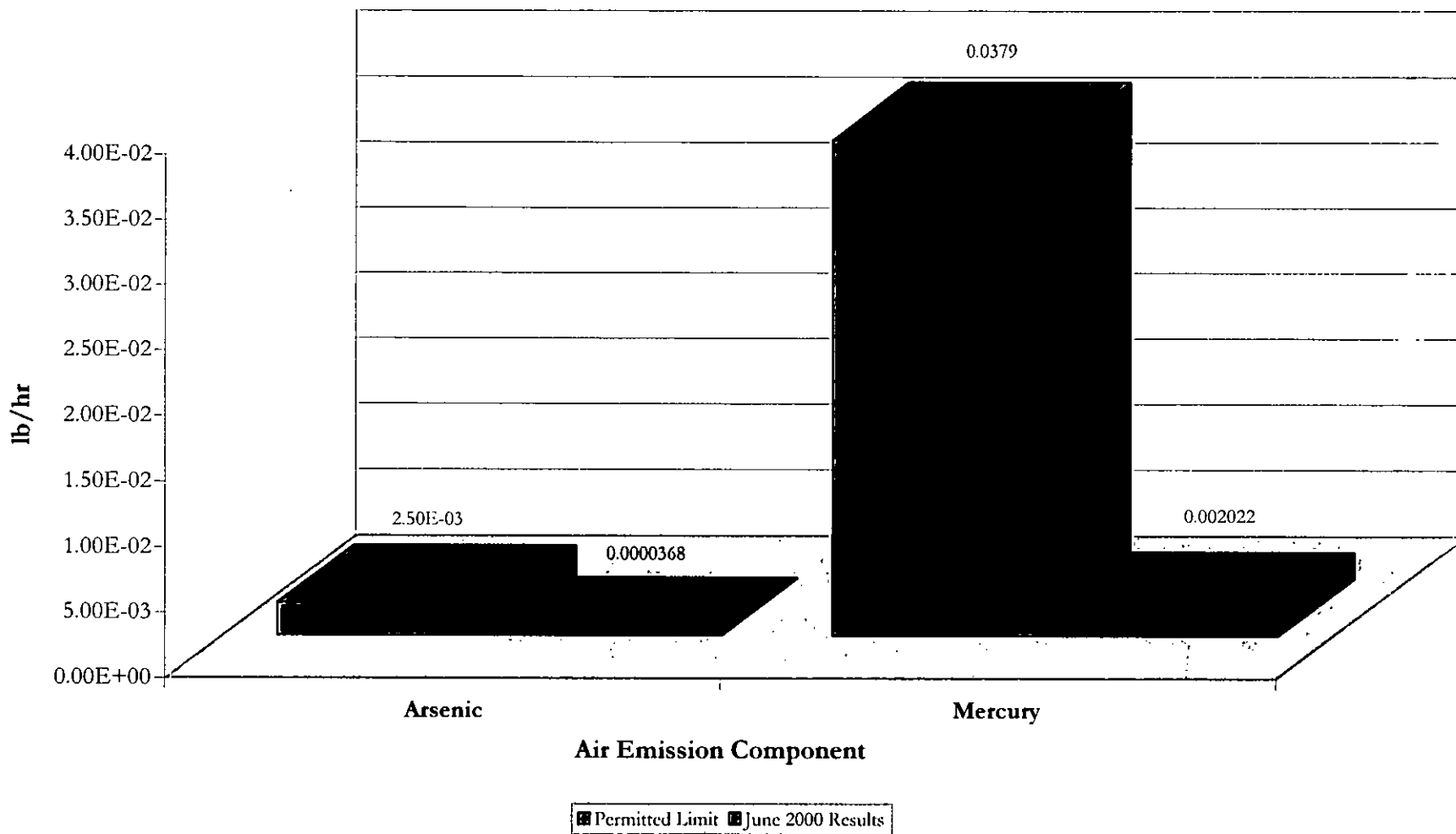


Figure 1-11
COMBINED STACK TEST RESULTS (cont.)
June 2000

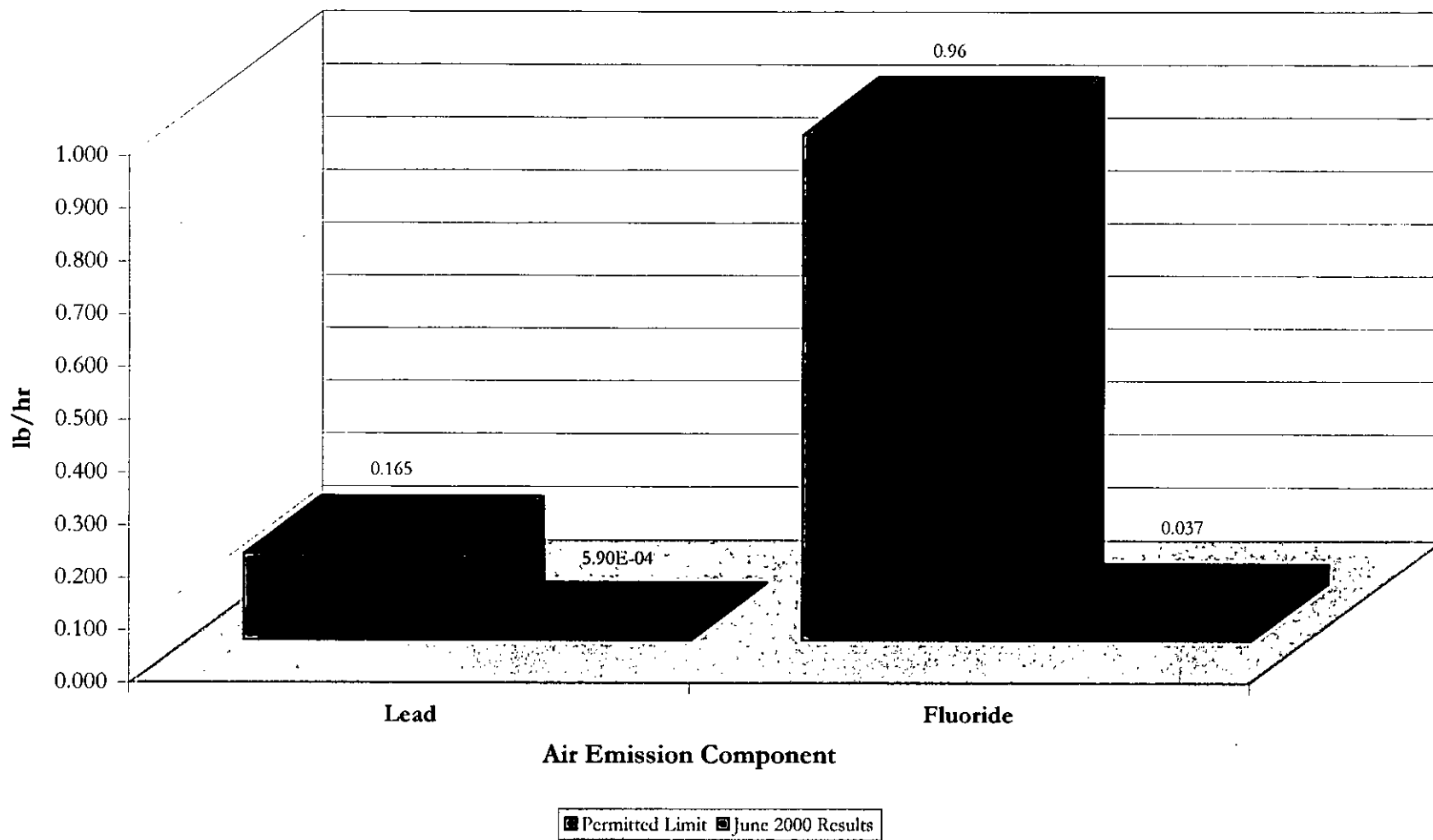


Figure 1-12
COMBINED STACK TEST RESULTS (cont.)
June 2000

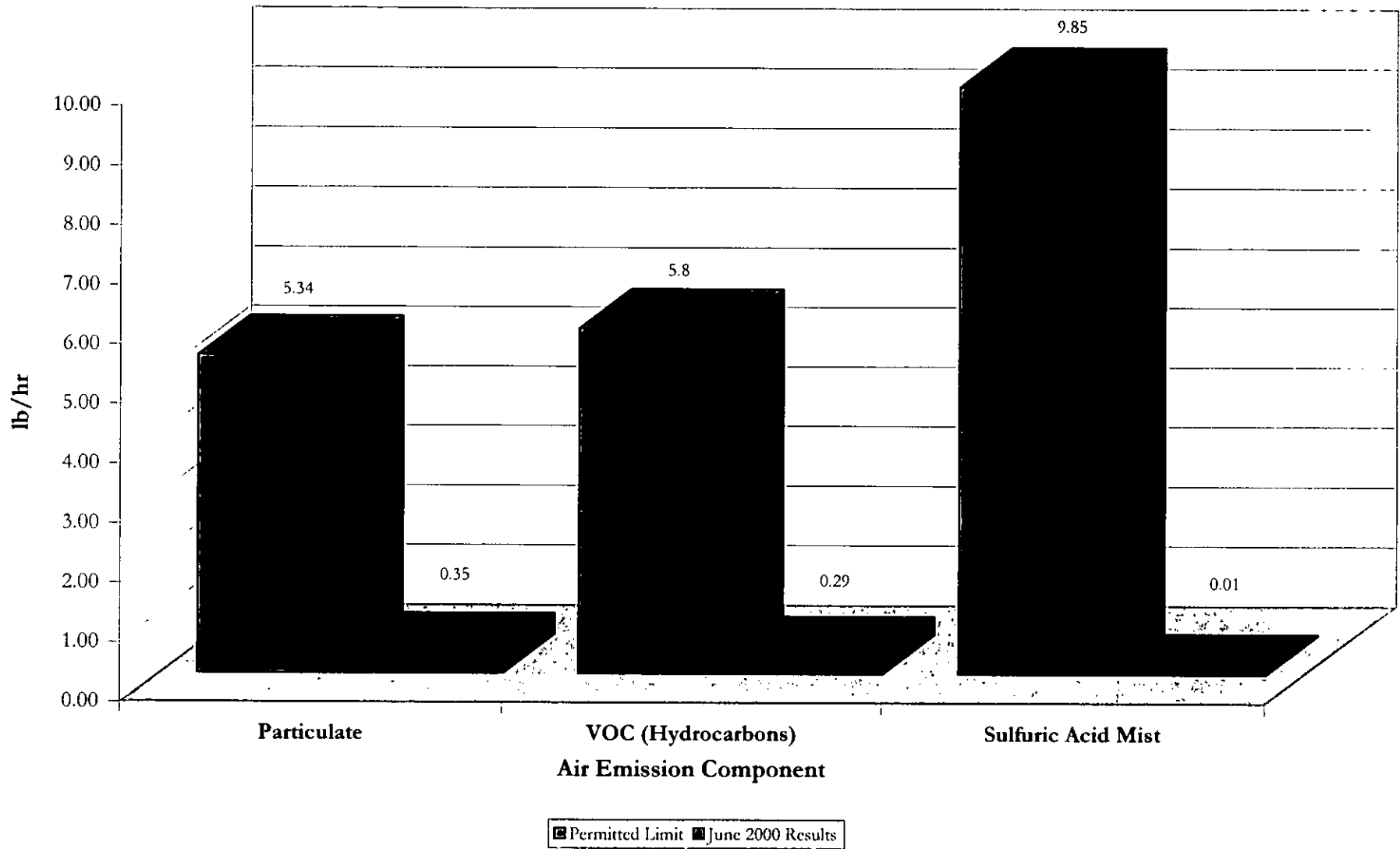


Figure 1-13
COMBINED STACK TEST RESULTS (cont.)
June 2000

