

In the folder labeled as follows there are documents, listed below, which were not reproduced in this electronic file. That folder can be found in the supplementary documents file drawer. Folders in that drawer are arranged alphabetically, then by permit number.

Folder Name: Chemical Lime Group

Permit(s) Numbered:

General		
---------	--	--

Documents:

Period during Detailed Description

which

document was

received

12-DEC-1994 1. COLOR PUBLICATION FROM CHEMICAL LIME

STATE OF FLORIDA DEPARTMENT OF ENVIRONMENTAL PROTECTION	
ROUTING AND TRANSMITTAL SLIP	
<i>BRUCE</i> <i>pls CALL</i>	
TO: (NAME, OFFICE, LOCATION)	
1.	<i>EA OWENS</i>
2.	<i>TRINITY CONSUERS.</i>
3.	
4.	
<i>404-394-4001</i>	
<i>CHEMICAL LINE PROJECT IN TAMPA</i>	
<i>RE: MEETING 12-1-94</i> <i>01130</i>	
FROM:	DATE
<i>Tony</i>	<i>11.21.94</i>
	PHONE

DRAFT**DRAFT****Chemical Lime - Tampa Project**

Agenda for Meeting with Florida DEP

December 1, 1994

1:30 p.m.

I. IntroductionsII. Project Overview - See Attached Page

- A. Description of Proposed Project - New 1,000 TPD Lime Plant
- B. Proposed Emission Rates/Controls

III. Permitting Issues

- A. PSD Permitting Issues (i.e., BACT)
- B. Non-Attainment New Source Review (i.e., ozone)
- C. LAER Issues
- D. Emissions "Offsets"
- E. Class I Issues (i.e., Chassahowitzka Wilderness Area)
- F. NSPS Requirements
- G. Monitoring Issues

IV. Modeling Issues

- A. Modeling Protocol
- B. Urban/Rural Designation
- C. Meteorological Data
- D. Source Inventories
- E. Ambient Monitoring
- F. Other Issues

DRAFT**DRAFT**

The proposed project involves the construction of a 1,000 ton per day lime manufacturing plant in Hillsborough County. The plant will be located on existing industrial property that has a storage terminal for lime. A mixture of coal and coke will be used as fuel to fire the rotary lime kiln. Limestone will be shipped to the plant and mechanically conveyed to a storage pile on-site. The finished product will be sent out by railcar and/or trucks. Potential particulate matter emissions resulting from miscellaneous material handling/conveying will be controlled by multiple baghouses. Fugitive emissions from storage piles and material transfer points will be minimized through the use of water sprays and covering, as needed. The proposed criteria pollutant emission rates from the plant are summarized in Table 1 below.

Table 1. Proposed emission rates - new lime plant.

Source ID	Source Type	Emission Rate			
		PM ₁₀ (tons/yr)	CO (tons/yr)	NO _x (tons/yr)	SO ₂ (tons/yr)
1-4,6-20	Transfer/storage systems	27.4 [*]	--	--	--
5	Rotary Kiln	39.4 [†]	201.5 [†]	403.0 [†]	306.6 [†]
Total:		66.8 ^{**}	201.5	403.0	306.6

* Based on 0.015 gr/DSCF, maximum air flow, and 8,760 hours/year.

† Based on manufacturer's guarantees.

** Does not include fugitive emissions from storage piles, transfer points, and roadways.

Best Available Copy

Trinity Consultants, Incorporated

FAX COVER LETTER

Date: 12/1 From: D. Andrew Owens
To: Bruce Mitchell Project: 9440-057
Company: Florida DEP Number of Pages: 3
Fax Number: (904) 922-6979 Includes cover Page

Trinity FAX Number: (404) 394-3610

Please call (404) 394-4001 if there are any problems with this transmission

MESSAGE:

Memorandum

Florida Department of Environmental Protection

488-0892

To: Rachel Mills, BIS
From: Katherine Zhang DARM
Date: Dec. 6, 1994

Subject: Request for Information from APIS

Please run report.

We have run report with Report-ID:

HILLS
~~MM~~
~~MM~~ PINEL

2 p copies
set up file

Name: Mr. Andrew Owens
Telephone: (404)-399-4001
Company: Trinity Consultants, Inc.
Address: 1117 Perimeter Center West
Suite N-415
Atlanta, GA 30338

Report: VOC and NOx source list
for Hillsborough County
& Pinellas County

12-1-94 Marty

Chemical Lim

① Permitted for a 600 TPD of lime; natural gas fired vertical kiln - June '93 Const Permit issued

② wants to build a 1000 TPD horizontal ^{pre-heater rotary} kiln firing coal; has land under lease

③ ~~Red~~

~~Steve Andrew Owens -~~

~~Don Christensen -~~

~~Tom Fisher -~~

~~Johnny Bowers -~~

~~Jim Masses -~~

~~Vijay -~~

④ Hg - heavy metals

① roadways will be paved - Sugitiles

② ship unloading will contain lime rock in a ϕ of $\sim 1\frac{1}{2}$ " - $2\frac{1}{2}$ "

③ PM Sugitiles must be assessed

④ Coal-Coke Suel - $\sim 3.0\%$ sulfur, by weight (need Suel analysis)

⑤ Control: PM - by house

SO₂ - $> 90\%$ removal - need data support

NO_x - efficient operation

CO -

⑥

Chemical Line Co.

MEETING on 12/1/94
Proposed 1000 t/dy Pottery Kiln

Name	Company/Pos.	Telephone
Charles Logan	DEP/Engr.	(904) 488-1344
John Brown	Admin, Paints/Std	904-488-1344
Bruce Mitchell	Admin - Title V	" "
Andrew Swart	Trinity Consultants / Lead Engineer	(404) 394-4001
David Christensen	Chemical Line Co.	(817) 732-8164
Tom Fisher	Chemical Line Co.	(817) 732-8164
Johnny G. Bowers	Chemical Line Co.	(817) 732-8164
Tim MASSIE	MASSIE + SCOTT TAMPA PORT AUTHORITY	(904) 222-8021
Vijay Gudivaka	TRINITY CONSULTANTS, INC. MANAGER, CONSULTING SERVICES	(404) 394-4001
Clare Holaday	DEP/DARM/BAZ/PSS	904-488-1344
Tom Rogers	DEP/DARM/OPARM	(904) 488-0114

106' X 800' SHIP

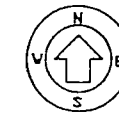
PORT SUTTON TURNING BASIN

PROPOSED NEW BERTH

NEW BOLLARDS

N 690.20

6.83 ACRES

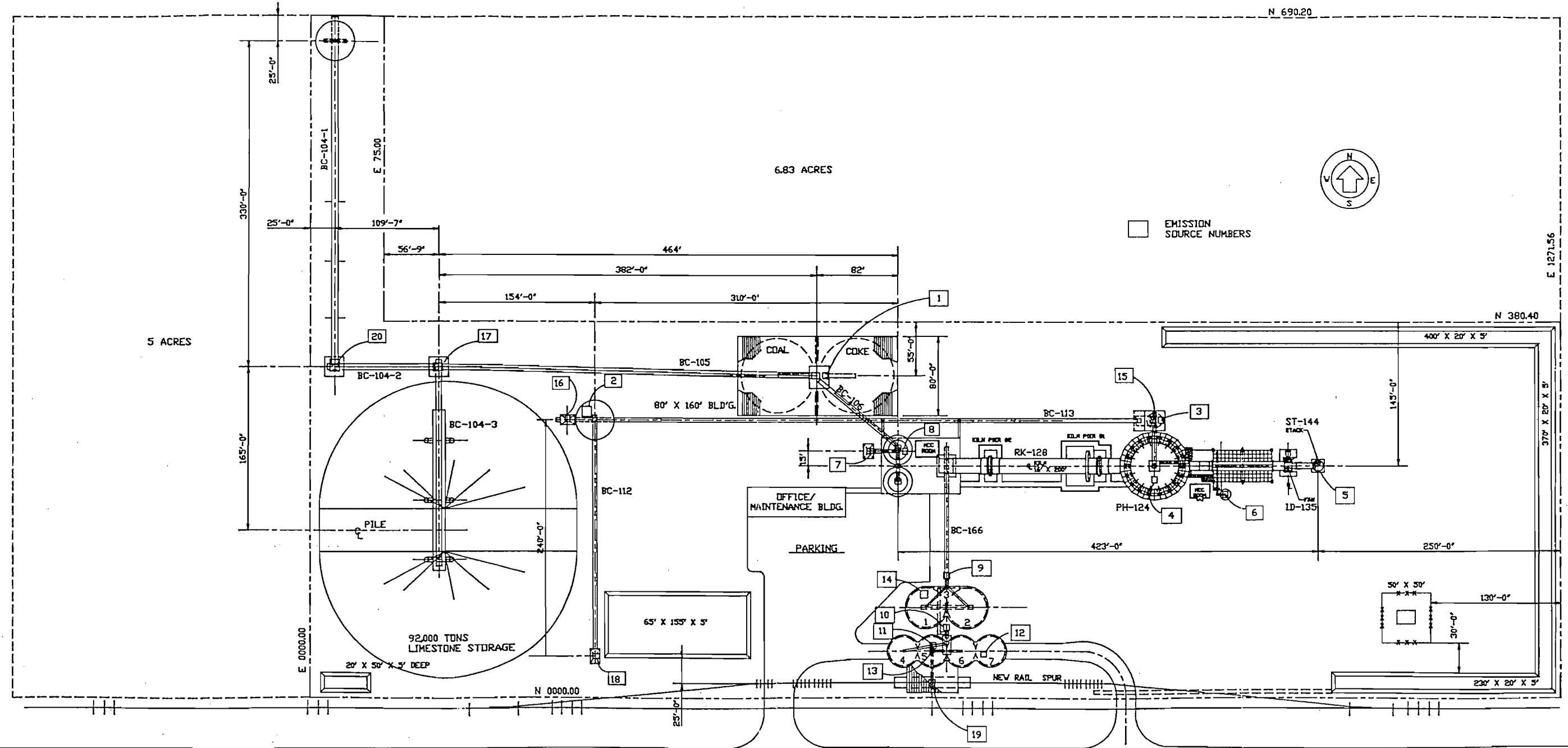


EMISSION SOURCE NUMBERS

5 ACRES

N 380.40

E 1271.56

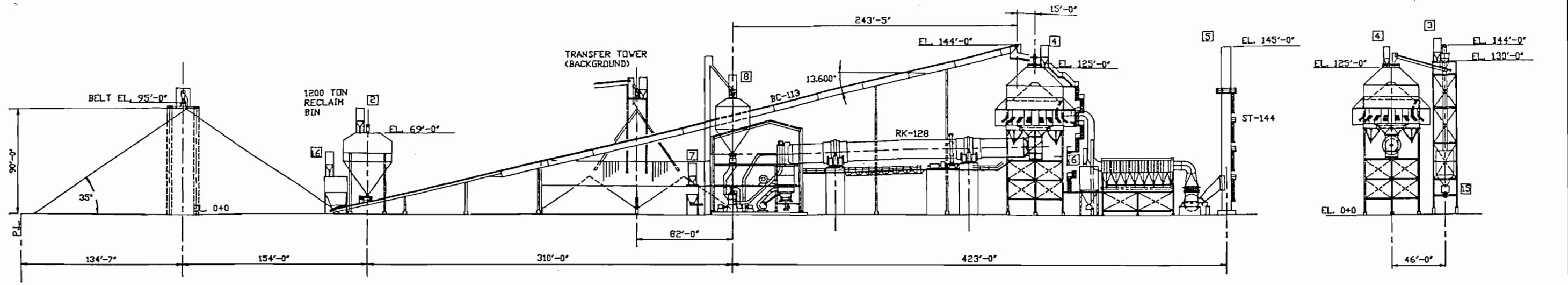


EXISTING ROADWAY

CHEMICAL LIME CO.
EAST TAMPA, FLORIDA
PROPOSED 1000 T.P.D.
PREHEATER KILN

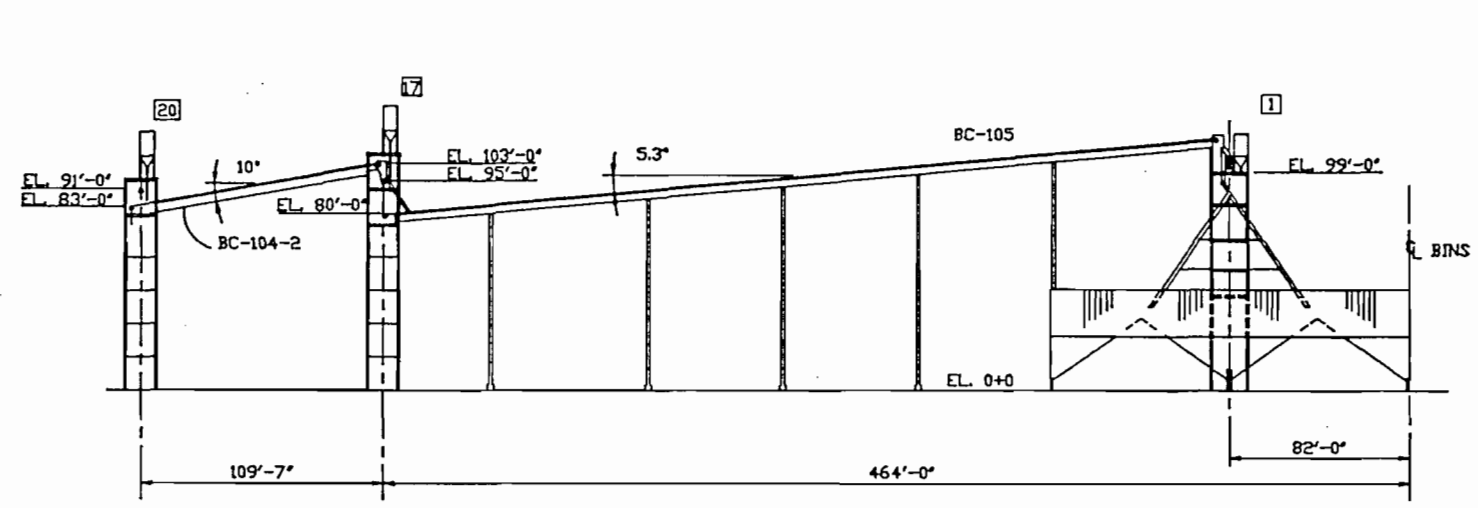
MOORE ENGINEERS, INC.
2614 FREEMAN DRIVE DALLAS, TEXAS 75220

DRAWN		J.P.K.	SCALE	SHEET NO. 1 OF 1
CHECK		V.J.L.	1"=30'	DRAWING NUMBER
APPD.		DATE	TAM-PL-1A	
JOB NO.		94-14		
MARK	BY	REMARKS	REVISIONS	

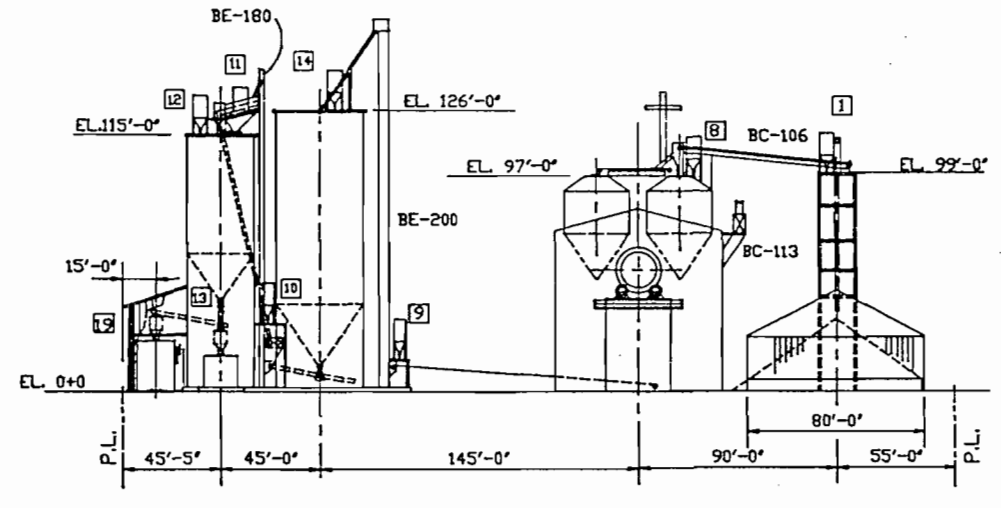


ELEVATION- KILN LINE, STORAGE PILE & CONVEYOR BC-113

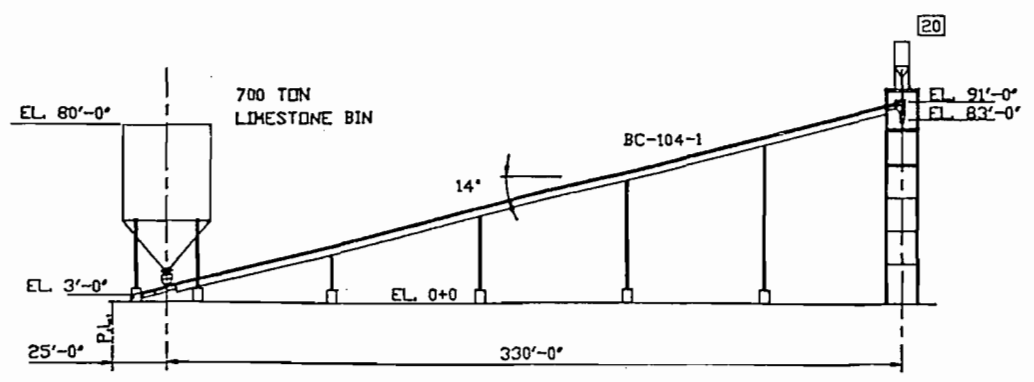
ELEVATION- PREHEATER & TRANSFER TOWER



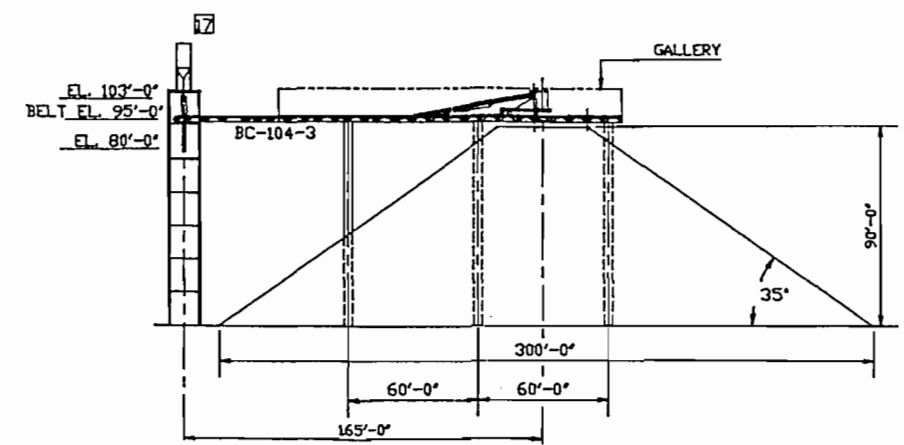
ELEVATION- CONVEYOR BC-104-2, BC-105, & BLD'G.



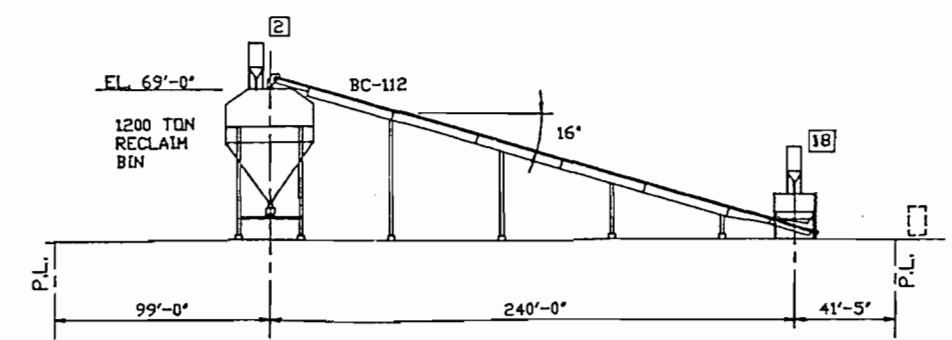
ELEVATION- STORAGE SILOS & COOLER BLD'G.



ELEVATION- CONVEYOR BC-104-1 & BIN



ELEVATION- TRIPPER CONVEYOR & TRANSFER TOWER



ELEVATION- CONVEYOR BC-112

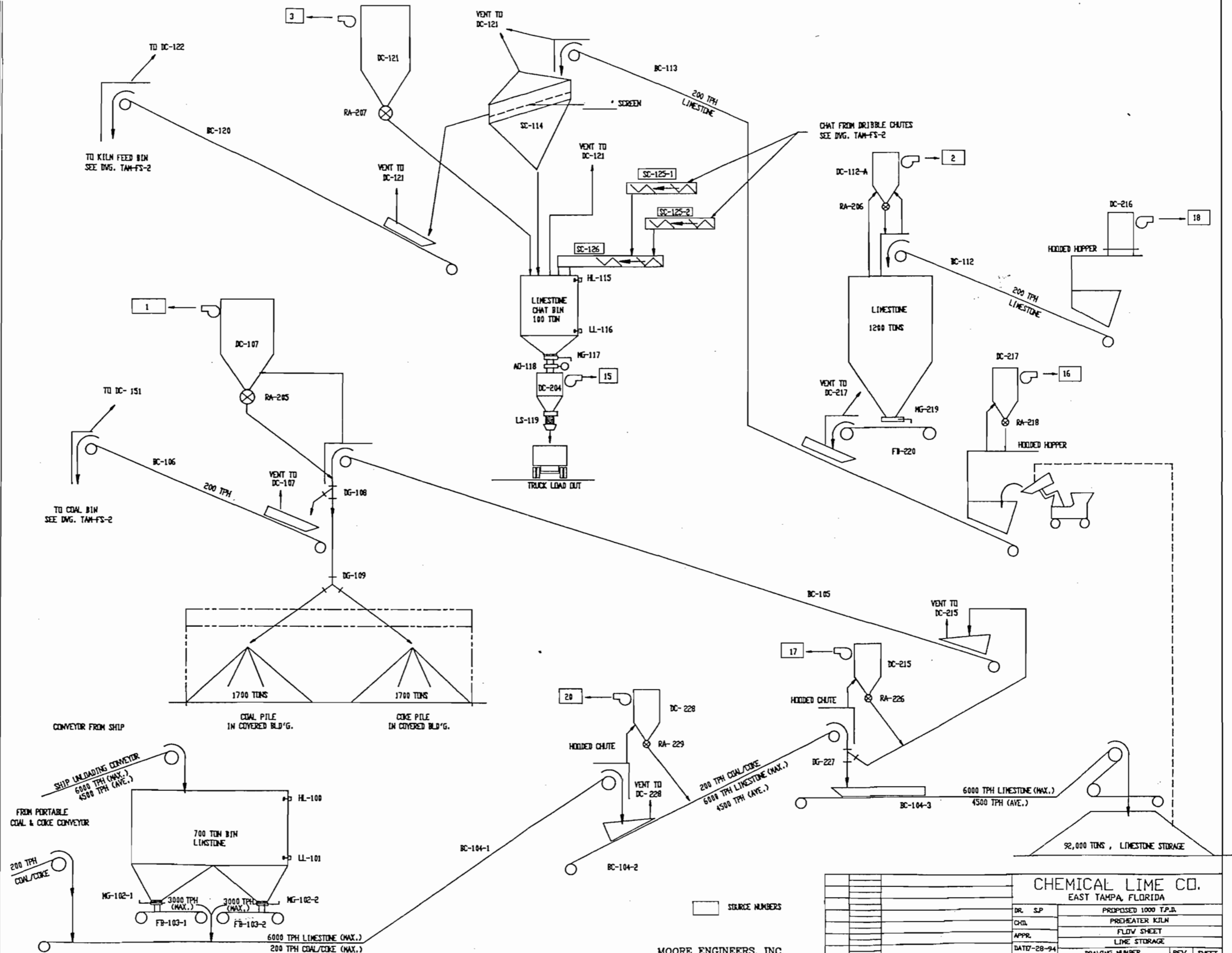
□ SOURCE NUMBERS

MOORE ENGINEERS, INC.
2614 FREEWOOD DRIVE DALLAS, TEXAS 75220

		CHEMICAL LIME CO. EAST TAMPA, FLORIDA		
		PROPOSED 1000 T.P.D.		
		PREHEATER KILN		
		ELEVATIONS		
DR. S.P.		DRAWING NUMBER		
CHD.		REV. SHEET		
APPR.		NO. OF		
DATE		TAM-EL-1A		
SCALE 1"=40'		JOB 94-14		
MARK BY DATE	REMARKS	REVISIONS		

EQUIPMENT LIST ROTARY KILN

- HL-100 HI BIN INDICATOR
- LL-101 LO BIN INDICATOR
- MG-102-1 MOTOR, SLIDE GATE
- MG-102-2 MOTOR, SLIDE GATE
- FB-103-1 FEEDER BELT CONVEYOR
- FB-103-2 FEEDER BELT CONVEYOR
- BC-104-1 BELT CONVEYOR
- BC-104-2 BELT CONVEYOR
- BC-104-3 BELT CONVEYOR / WITH TRIPPER
- BC-105 BELT CONVEYOR
- BC-106 BELT CONVEYOR
- DC-107 DUST COLLECTOR / WITH FAN
- DG-108 DIVERTER GATE
- DG-109 DIVERTER GATE
- BC-112 BELT CONVEYOR
- DC-112-A DUST COLLECTOR / WITH FAN
- BC-113 BELT CONVEYOR
- SC-114 SHAKER SCREEN
- HL-115 HI BIN INDICATOR
- LL-116 LO BIN INDICATOR
- MG-117 MOTOR, SLIDE GATE
- AD-118 AIR OPER. GATE
- LS-119 LOADING SPOUT
- BC-120 BELT CONVEYOR
- DC-121 DUST COLLECTOR / WITH FAN
- DC-204 DUST COLLECTOR / WITH FAN
- RA-205 ROTARY FEEDER
- RA-206 ROTARY FEEDER
- RA-207 ROTARY FEEDER
- DC-215 DUST COLLECTOR / WITH FAN
- DC-216 DUST COLLECTOR / WITH FAN
- DC-217 DUST COLLECTOR / WITH FAN
- RA-218 ROTARY FEEDER
- MG-219 MOTOR, SLIDE GATE
- FB-220 FEEDER BELT CONVEYOR
- RA-226 ROTARY FEEDER
- DG-227 DIVERTER GATE
- DC-228 DUST COLLECTOR / WITH FAN
- RA-229 ROTARY FEEDER



MOORE ENGINEERS, INC.
2614 FRISWOOD DRIVE DALLAS, TEXAS 75220

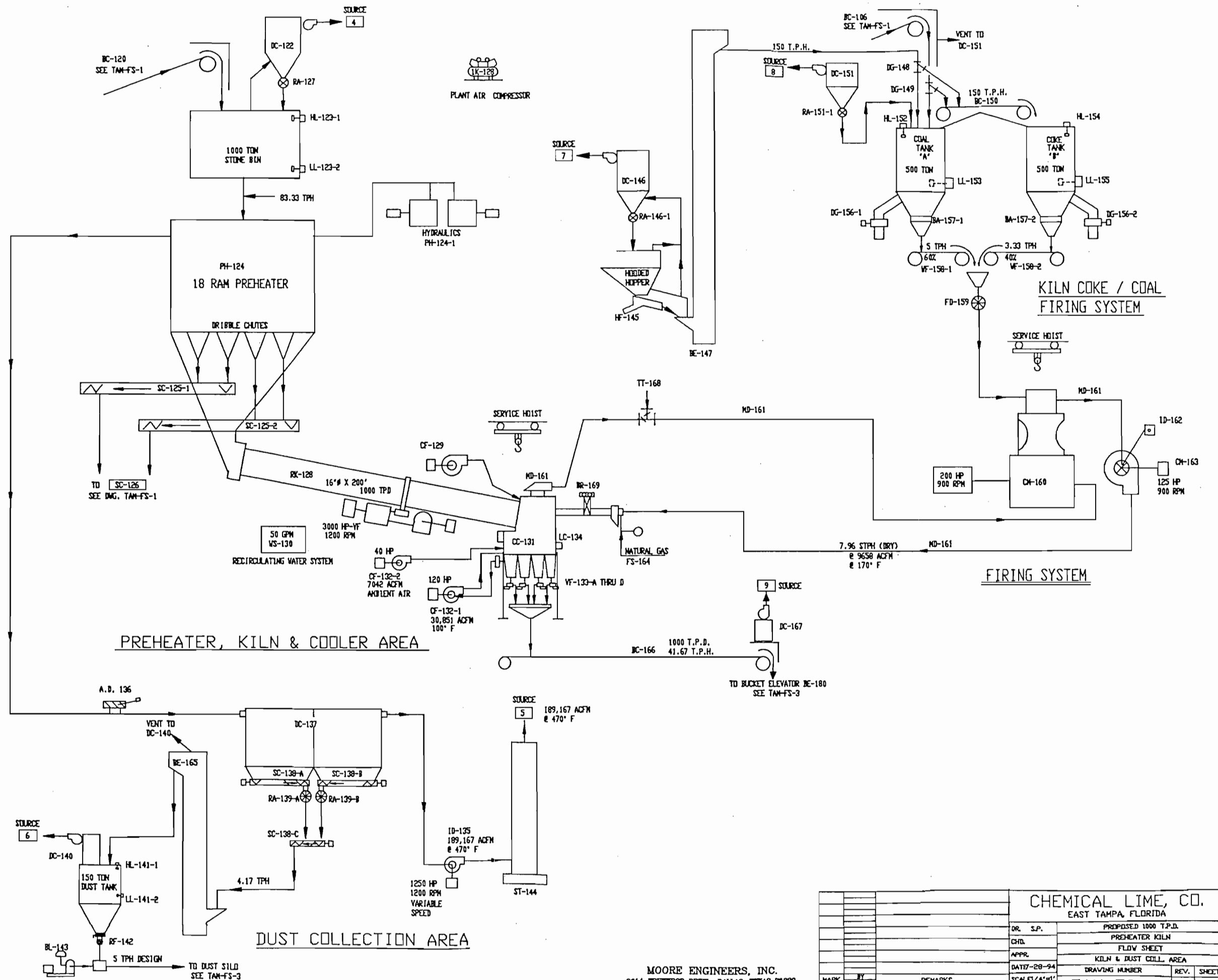
CHEMICAL LIME CO. EAST TAMPA, FLORIDA			
DR. S.P.	PROPOSED 1000 T.P.D.	REV.	SHEET
CHD.	PREHEATER KILN		
APPR.	FLOW SHEET		
DATE: 2-28-94	LIME STORAGE		
SCALE: 1/4"=1'	DRAWING NUMBER	TAM-FS-1A	NO. 1
MARK BY: [initials]	REVISIONS		OF 3

EQUIPMENT LIST ROTARY KILN

- DC-122 DUST COLLECTOR / WITH FAN
- HL-123-1 HI BIN INDICATOR
- LL-123-2 LO BIN INDICATOR
- PR-124 PREHEATER
- PR-124-1 PREHEATER HYDRAULICS PACKAGE
- SC-125-1 62 SCREW CONVEYORS
- SC-126 SCREW CONVEYOR
- RA-127 ROTARY AIRLOCK
- RK-128 ROTARY KILN & DRIVE
- CF-129 NOISE RING COOLING FAN W/ DAMPER
- VS-130 RECIRCULATING WATER SYSTEM
- CC-131 CONTACT COOLER
- CF-132-1&2 COOLER FANS
- VF-133-A TO D VIBRATING FEEDERS
- LC-134 COOLER LEVEL CONTROL
- ID-135 I. D. FAN W/VARIABLE SPEED DRIVE
- AD-136 BLEED AIR DAMPER
- DC-137 KILN-PREHEATER BAGHOUSE
- SC-138-C SCREW CONVEYOR
- SC-138-A&B SCREW CONVEYORS
- RA-139-A&B ROTARY AIRLOCK
- DC-140 DUST COLLECTOR W/ FAN
- HL-141-1 HI BIN INDICATOR
- LL-141-2 LO BIN INDICATOR
- RF-142 ROTARY FEEDER
- BL-143 PNEUMATIC TRANSFER SYSTEM
- ST-144 STACK
- BE-165 BUCKET ELEVATOR
- BC-166 BELT CONVEYOR
- DC-167 DUST COLLECTOR

KILN FIRING SYSTEM

- HF-145 HOPPER FEEDER
- DC-146 DUST COLLECTOR
- RA-146-1 ROTARY AIRLOCK
- BE-147 BUCKET ELEVATOR
- DG-148 DIVERTER GATE
- DG-149 DIVERTER GATE
- BC-150 BELT CONVEYOR
- DC-151 DUST COLLECTOR
- RA-151-1 ROTARY AIRLOCK
- HL-152 HI LEVEL INDICATOR
- LL-153 LO LEVEL INDICATOR
- HL-154 HI LEVEL INDICATOR
- LL-155 LO LEVEL INDICATOR
- DG-156-1 DUMP GATES
- DG-156-2 DUMP GATES
- BA-157-1 BIN ACTUATORS
- BA-157-2 BIN ACTUATORS
- VF-158-1 VEIGH FEEDERS
- VF-158-2 VEIGH FEEDERS
- FD-159 COAL MILL FEEDER
- CH-160 COAL MILL
- MD-161 COAL MILL DUCTWORK
- ID-162 FAN INLET DAMPER
- CH-163 COAL MILL FAN
- FS-164 GAS FIRING SYSTEM
- TT-168 TEMPERING TEE DAMPER
- BR-169 COAL / GAS BURNER W/ TROLLEY

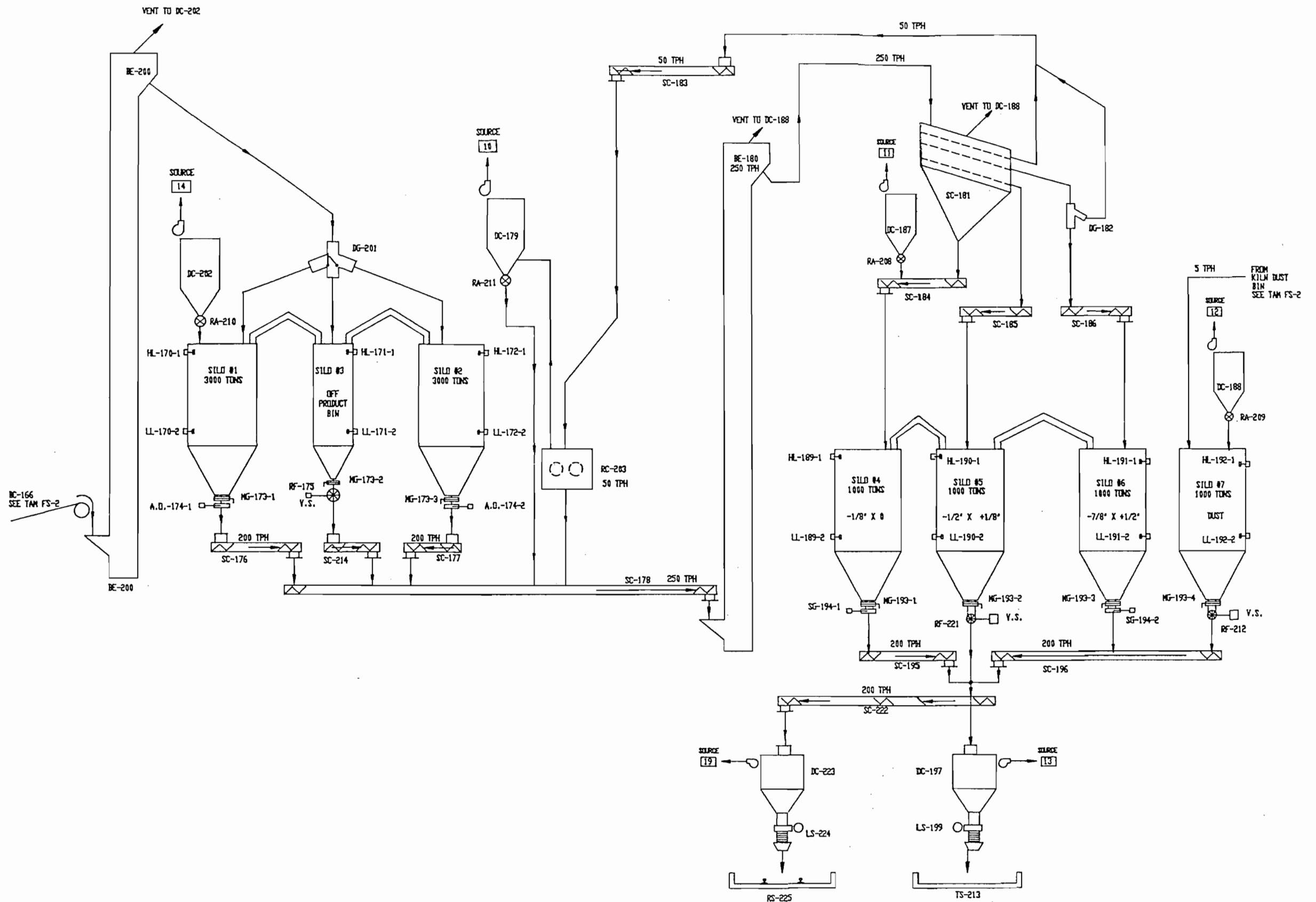


MOORE ENGINEERS, INC.
2614 FRANKWOOD DRIVE DALLAS, TEXAS 75220

CHEMICAL LIME, CO. EAST TAMPA, FLORIDA			
DR. S.P.	PROPOSED 1000 T.P.D.		
CHD	PREHEATER KILN		
APPR.	FLOW SHEET		
DATE: 2-28-94	KILN & DUST COLL. AREA		
SCALE: 4"=1'	DRAWING NUMBER	REV.	SHEET
JOB 94-14	TAM-FS-2		2 OF 2
REVISIONS			

EQUIPMENT LIST

- HL-170-1 HI BIN INDICATOR
- LL-170-2 LO BIN INDICATOR
- HL-171-1 HI BIN INDICATOR
- LL-171-2 LO BIN INDICATOR
- HL-172-1 HI BIN INDICATOR
- LL-172-2 LO BIN INDICATOR
- MG-173-1, 2 & 3 MANUAL SLIDE GATE
- A.D.-174-1 & 2 AIR OPER. GATE
- RF-175 ROTARY FEEDER -V.S.
- SC-176 SCREW CONVEYOR
- SC-177 SCREW CONVEYOR
- SC-178 SCREW CONVEYOR
- DC-179 DUST COLLECTOR
- BE-180 BUCKET ELEVATOR
- SC-181 SHAKER SCREEN
- DG-182 DIVERTER GATE
- SC-183 SCREW CONVEYORS
- SC-184 SCREW CONVEYORS
- SC-185 SCREW CONVEYORS
- SC-186 SCREW CONVEYORS
- DC-187 DUST COLLECTOR
- DC-188 DUST COLLECTOR
- HL-189-1 HI BIN INDICATOR
- LL-189-2 LO BIN INDICATOR
- HL-190-1 HI BIN INDICATOR
- LL-190-2 LO BIN INDICATOR
- HL-191-1 HI BIN INDICATOR
- LL-191-2 LO BIN INDICATOR
- HL-192-1 HI BIN INDICATOR
- LL-192-2 LO BIN INDICATOR
- MG-193-1 THRU 4 MANUAL SLIDE GATE
- SG-194-1&2 SHUT-OFF GATE (E.H.D.)
- SC-195 SCREW CONVEYOR
- SC-196 SCREW CONVEYOR
- DC-197 DUST COLLECTOR WITH FAN
- LS-199 LOADING SPOUT
- BE-200 BUCKET ELEVATOR
- DG-201 DIVERTER GATE
- DC-202 DUST COLLECTOR WITH FAN
- RC-203 ROLL CRUSHER
- RA-208 ROTARY AIRLOCK
- RA-209 ROTARY AIRLOCK
- RA-210 ROTARY AIRLOCK
- RA-211 ROTARY AIRLOCK
- RF-212 ROTARY FEEDER -V.S.
- TS-213 TRUCK SCALE
- SC-214 SCREW CONVEYOR
- RF-221 ROTARY FEEDER -V.S.
- SC-222 SCREW CONVEYOR
- DC-223 DUST COLLECTOR WITH FAN
- LS-224 LOADING SPOUT
- RS-225 RAIL SCALE



MOORE ENGINEERS, INC.
2614 FREEWOOD DRIVE DALLAS, TEXAS 75220

		CHEMICAL LIME, CO. EAST TAMPA, FLORIDA	
DR. S.P.		PROPOSED 1000 T.P.D.	
CHD.		PREHEATER KILN	
APPR.		FLOW SHEET	
DATE: 2-29-94		STORAGE AREA	
MARK	DATE	DRAWING NUMBER	REV. SHEET
		TAM-FS-3	NO. 3 DE. 3
REVISIONS			