

Scanned together

Walker, Elizabeth (AIR)

From: Linero, Alvaro
Sent: Friday, September 03, 2010 8:39 PM
To: Walker, Elizabeth (AIR)
Subject: Brooksville South Kiln 2 Dust - Finish Mill No. 2

From: Linero, Alvaro
Sent: Tuesday, August 31, 2010 12:14 PM
To: 'Townsend, George'; Heron, Teresa; Holtom, Jonathan
Cc: Lillian F Deprimo; Daniel, James S. (Jim); Bassler, Steven L.; Nasca, Mara; Fox, Howard
Subject: RE: Brooksville South Kiln 2 Dust - Finish Mill No. 2

Dear Mr. Townsend:

On the basis of your letter and attachments dated August 30, 2010 and the follow up information below we agree with your conclusion that your Brooksville South Kiln 2 filter dust storage/conveyance/intergrinding project will not require a permit.

[Rule 62-210.300(a), F.A.C. Categorical and Conditional Exemptions]

Thanks.

Al Linero.

From: Townsend, George [mailto:gtownsend@cemexusa.com]
Sent: Tuesday, August 31, 2010 11:50 AM
To: Heron, Teresa; Holtom, Jonathan
Cc: Linero, Alvaro; Lillian F Deprimo; Daniel, James S. (Jim); Bassler, Steven L.
Subject: Kiln 2 Dust - Finish Mill No. 2

In response to the conversation this morning:

The project, as we proposed, will have negligible potential to emit, certainly less than 0.1 tons per year. The scope of material handling, within the system, will not increase. As the filter dust is consumed at the finish mill, it ultimately replaces a like volume of another input(s). The permitted rate of the finish will not be increased and there will be no net increase in the potential to emit from the finish mill baghouse, and we believe, no permit modification is required and our ability to comply with the new NESHAPS regulations starts now, not in 2013.

Your assistance in this matter is greatly appreciated!



George Townsend
Environmental Manager –Brooksville South - United States of America
Office: (352) 799-7881 Fax: (352) 799-6088 Mobile: (352) 238-9102
Address: 10311 Cement Plant Road, Brooksville, FL 34601
e-Mail: gtownsend@cemexusa.com
www.cemexusa.com



Please consider the environment before printing this email.

CONFIDENTIALITY: The information contained in this transmission may contain privileged and confidential information. It is intended only for the use of the person(s) named above. If you are not the intended recipient, you are hereby notified that any review, dissemination, distribution or duplication of this communication, and the information contained in it, is strictly prohibited. If you are not the intended recipient, please contact the sender and immediately destroy all copies of the original message.



August 30, 2010

Mr. A. A. Linero, P.E.
Administrator, South Permitting Section
Division of Air Resource Management
Florida Department of Environmental Regulation
2600 Blair Stone Road
Tallahassee, Florida 32399-2400

RECEIVED
SEP 02 2010
BUREAU OF
AIR REGULATION

**RE: CEMEX Construction Materials Florida, LLC
Brooksville South Cement Plant – Kiln 2
Baghouse Dust Routing**

Dear Mr. Linero:

Pursuant to our meeting with the Department (Southwest District), we are submitting the information concerning the equipment we need to install for the effective routing of filter dust from Kiln No. 2 baghouse/dust bin; to Finish Mill No. 2. The details of current operations and planned operations are included as Attachment 1; drawings depicting the planned equipment and location are included as Attachment No. 2.

As noted in Attachment No. 1 an existing dust collector (Kiln Feed Bin DC – EU 47, Equip. No. 351.BF410) will be used to vent the new dust silo. We will not add any dust collectors and there will be no increase in volumes; therefore, we believe there will be no need for a permit modification.

Should you have any questions and/or comments or require additional information, please contact me at 352-799-7881, or gtownsend@cemexusa.com.

Respectfully,

George Townsend

Pc: Lillian Deprimo, Director, Environmental
James S. Daniel, Plant Manager
Steven L. Bassler, Production Manager
David Zell, FDEP

D:\Documents and Settings\gtownsend\My Documents\Brooksville South\Kiln 2\Kiln 2 Dust Routing.doc

Brooksville South Cement Plant

10311 Cement Plant Rd., Brooksville, FL 34601. USA, (352) 799-7881, Fax (352) 799-6088

Attachment 1

Improvement to K2 Dust Transfer Procedures

- Current system allows for the direct transfer of dust from K2 via piping to the following units:
 - Kiln 2 Blend Silo
 - Kiln 2 Kiln Feed Bin
 - Kiln 1 Main Baghouse Dust Silo
 - Truck Load Out
- Transfers to Finish Mill 2 are accomplished by transfer trucks using Truck Load Out
- To allow for direct transfer to Finish Mill 2, CEMEX plans the installation of the following:
 - New Diverter Valve in existing pipeline for pneumatic transfer to the new tank.
 - New 200 Ton Capacity Dust Tank
 - Withdrawal Equipment (shut off valve, rotary feeder, airslide)
 - Impact Flow Meter
 - Pneumatic Transfer Pump & Compressor (existing)
 - Pipeline to FM2 Outlet Duct (FM 2 Baghouse Inlet Duct)

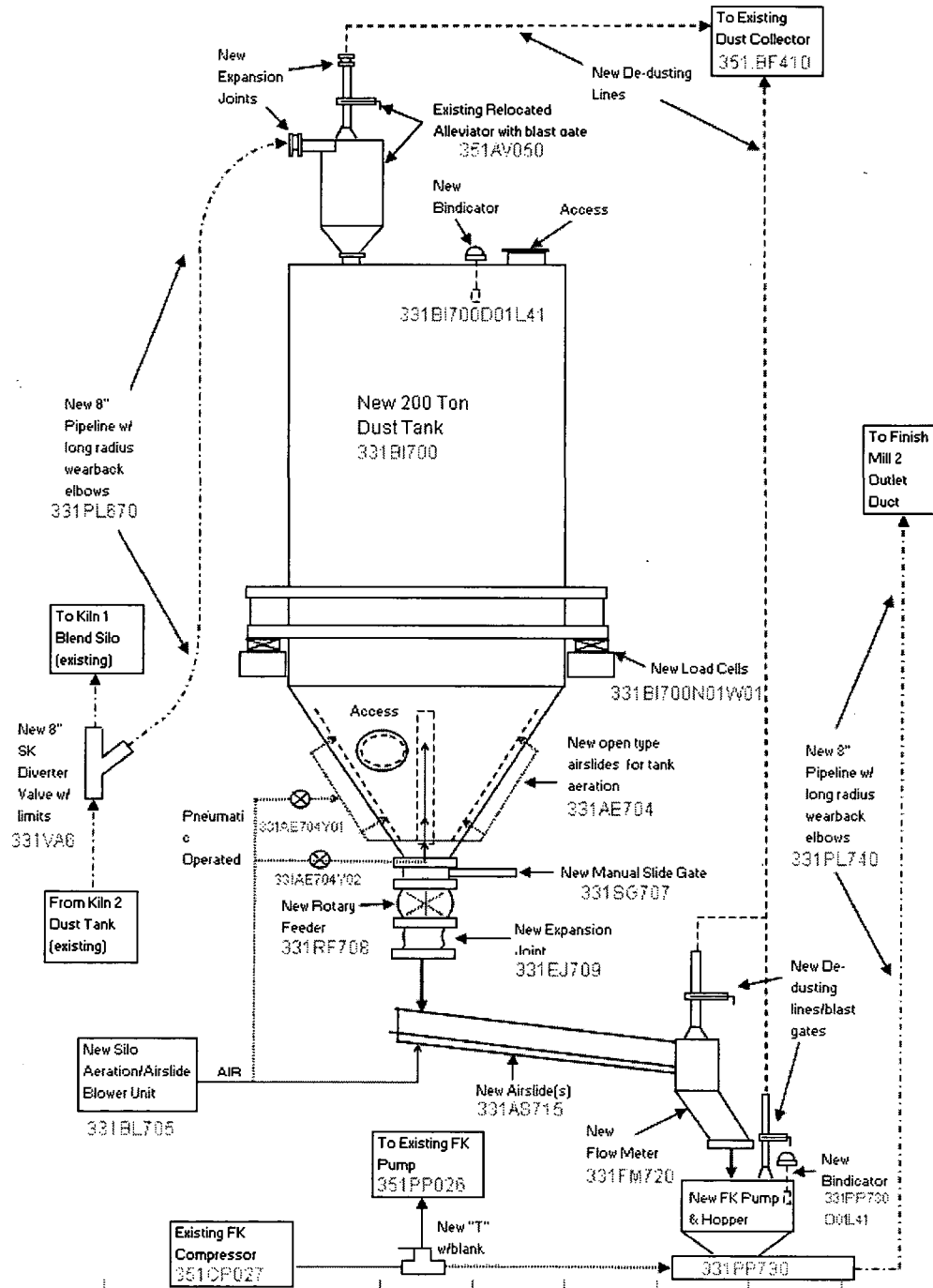
NOTE: Venting of new tank and equipment to be provided by using the existing dust collector that is venting the Kiln 2 Feed Bin

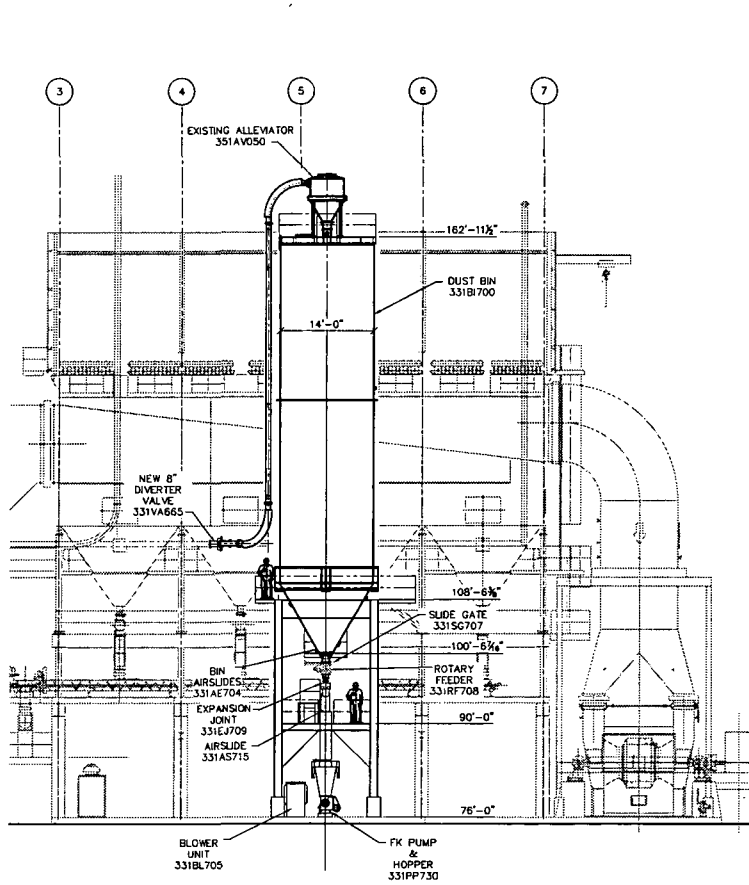
Attorney Client Privileged

Attachment 2

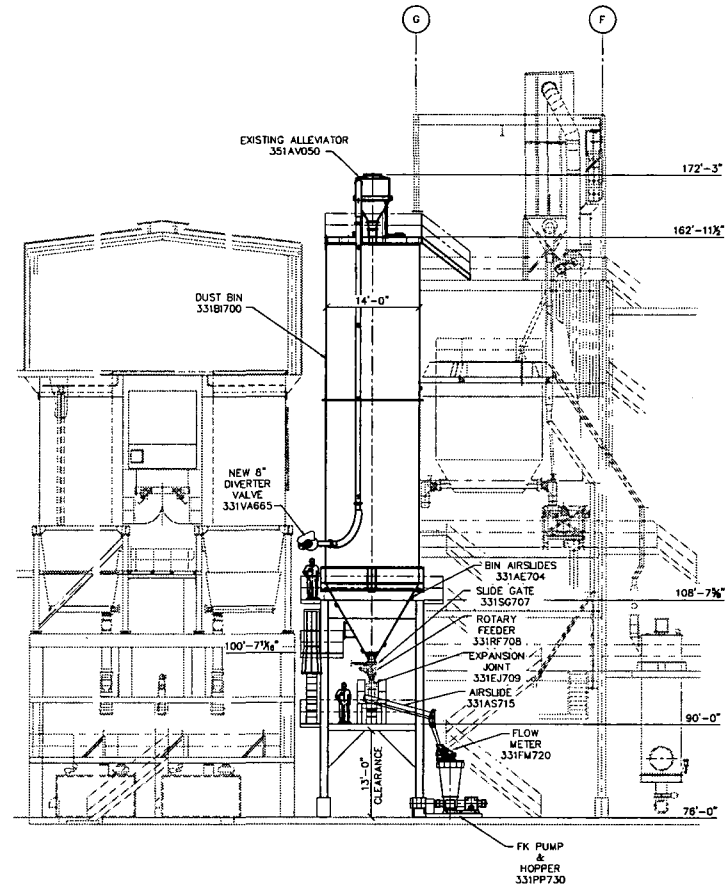


**Brooksville South Plant
Kiln 2 Dust To Finish Mill 2 Project**





VIEW **A**
SCALE: 1/8"=1'-0" (20-00)



VIEW **B**
SCALE: 1/8"=1'-0" (20-00)

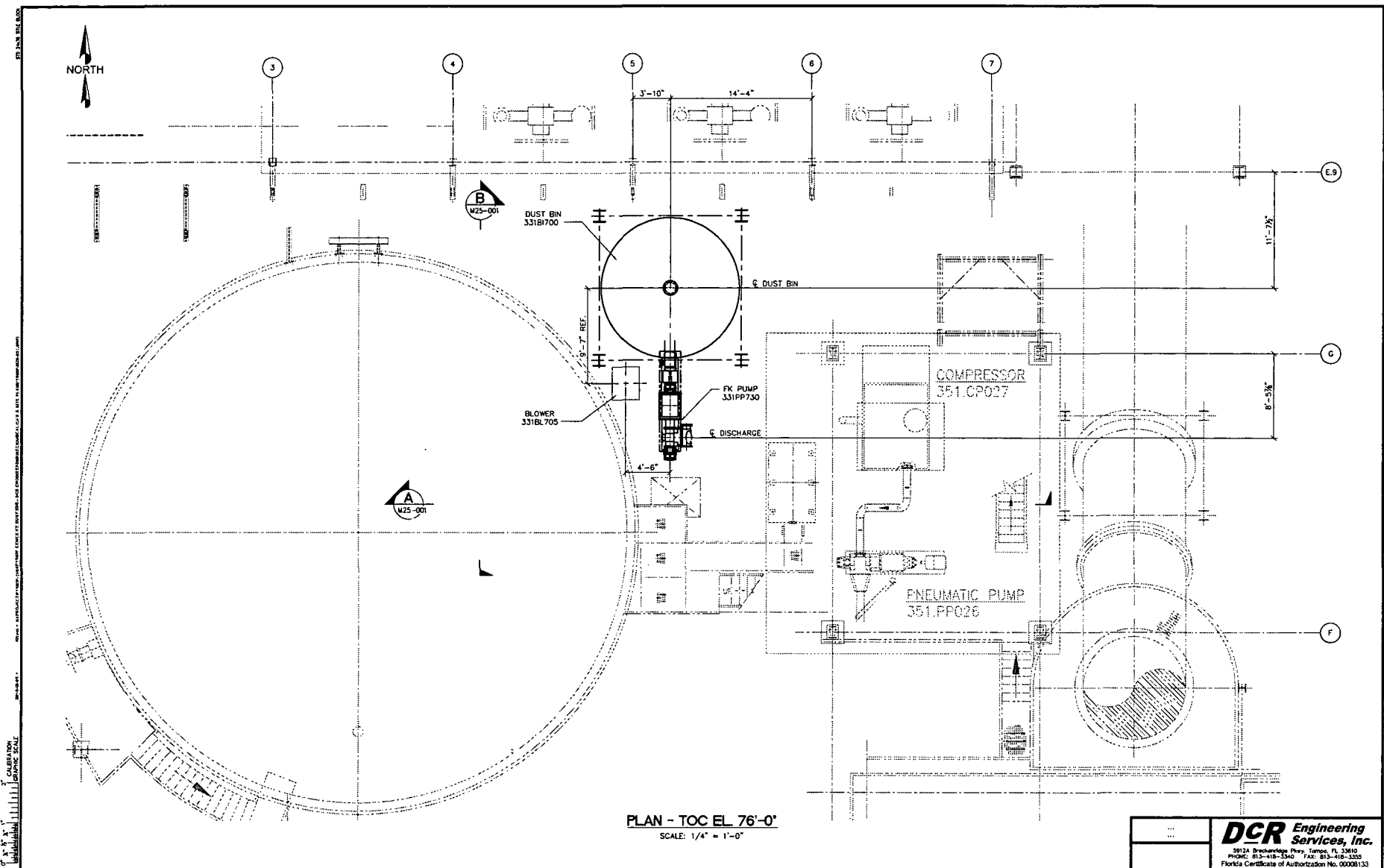
1" = 10'-0" SCALE
 1/8" = 1'-0" SCALE
 1/4" = 1'-0" SCALE
 1/2" = 1'-0" SCALE
 3/4" = 1'-0" SCALE
 1" = 1'-0" SCALE
 1 1/4" = 1'-0" SCALE
 1 1/2" = 1'-0" SCALE
 1 3/4" = 1'-0" SCALE
 2" = 1'-0" SCALE
 2 1/4" = 1'-0" SCALE
 2 1/2" = 1'-0" SCALE
 2 3/4" = 1'-0" SCALE
 3" = 1'-0" SCALE
 3 1/4" = 1'-0" SCALE
 3 1/2" = 1'-0" SCALE
 3 3/4" = 1'-0" SCALE
 4" = 1'-0" SCALE
 4 1/4" = 1'-0" SCALE
 4 1/2" = 1'-0" SCALE
 4 3/4" = 1'-0" SCALE
 5" = 1'-0" SCALE
 5 1/4" = 1'-0" SCALE
 5 1/2" = 1'-0" SCALE
 5 3/4" = 1'-0" SCALE
 6" = 1'-0" SCALE
 6 1/4" = 1'-0" SCALE
 6 1/2" = 1'-0" SCALE
 6 3/4" = 1'-0" SCALE
 7" = 1'-0" SCALE
 7 1/4" = 1'-0" SCALE
 7 1/2" = 1'-0" SCALE
 7 3/4" = 1'-0" SCALE
 8" = 1'-0" SCALE
 8 1/4" = 1'-0" SCALE
 8 1/2" = 1'-0" SCALE
 8 3/4" = 1'-0" SCALE
 9" = 1'-0" SCALE
 9 1/4" = 1'-0" SCALE
 9 1/2" = 1'-0" SCALE
 9 3/4" = 1'-0" SCALE
 10" = 1'-0" SCALE
 10 1/4" = 1'-0" SCALE
 10 1/2" = 1'-0" SCALE
 10 3/4" = 1'-0" SCALE
 11" = 1'-0" SCALE
 11 1/4" = 1'-0" SCALE
 11 1/2" = 1'-0" SCALE
 11 3/4" = 1'-0" SCALE
 12" = 1'-0" SCALE
 12 1/4" = 1'-0" SCALE
 12 1/2" = 1'-0" SCALE
 12 3/4" = 1'-0" SCALE
 13" = 1'-0" SCALE
 13 1/4" = 1'-0" SCALE
 13 1/2" = 1'-0" SCALE
 13 3/4" = 1'-0" SCALE
 14" = 1'-0" SCALE
 14 1/4" = 1'-0" SCALE
 14 1/2" = 1'-0" SCALE
 14 3/4" = 1'-0" SCALE
 15" = 1'-0" SCALE
 15 1/4" = 1'-0" SCALE
 15 1/2" = 1'-0" SCALE
 15 3/4" = 1'-0" SCALE
 16" = 1'-0" SCALE
 16 1/4" = 1'-0" SCALE
 16 1/2" = 1'-0" SCALE
 16 3/4" = 1'-0" SCALE
 17" = 1'-0" SCALE
 17 1/4" = 1'-0" SCALE
 17 1/2" = 1'-0" SCALE
 17 3/4" = 1'-0" SCALE
 18" = 1'-0" SCALE
 18 1/4" = 1'-0" SCALE
 18 1/2" = 1'-0" SCALE
 18 3/4" = 1'-0" SCALE
 19" = 1'-0" SCALE
 19 1/4" = 1'-0" SCALE
 19 1/2" = 1'-0" SCALE
 19 3/4" = 1'-0" SCALE
 20" = 1'-0" SCALE
 20 1/4" = 1'-0" SCALE
 20 1/2" = 1'-0" SCALE
 20 3/4" = 1'-0" SCALE
 21" = 1'-0" SCALE
 21 1/4" = 1'-0" SCALE
 21 1/2" = 1'-0" SCALE
 21 3/4" = 1'-0" SCALE
 22" = 1'-0" SCALE
 22 1/4" = 1'-0" SCALE
 22 1/2" = 1'-0" SCALE
 22 3/4" = 1'-0" SCALE
 23" = 1'-0" SCALE
 23 1/4" = 1'-0" SCALE
 23 1/2" = 1'-0" SCALE
 23 3/4" = 1'-0" SCALE
 24" = 1'-0" SCALE
 24 1/4" = 1'-0" SCALE
 24 1/2" = 1'-0" SCALE
 24 3/4" = 1'-0" SCALE
 25" = 1'-0" SCALE
 25 1/4" = 1'-0" SCALE
 25 1/2" = 1'-0" SCALE
 25 3/4" = 1'-0" SCALE
 26" = 1'-0" SCALE
 26 1/4" = 1'-0" SCALE
 26 1/2" = 1'-0" SCALE
 26 3/4" = 1'-0" SCALE
 27" = 1'-0" SCALE
 27 1/4" = 1'-0" SCALE
 27 1/2" = 1'-0" SCALE
 27 3/4" = 1'-0" SCALE
 28" = 1'-0" SCALE
 28 1/4" = 1'-0" SCALE
 28 1/2" = 1'-0" SCALE
 28 3/4" = 1'-0" SCALE
 29" = 1'-0" SCALE
 29 1/4" = 1'-0" SCALE
 29 1/2" = 1'-0" SCALE
 29 3/4" = 1'-0" SCALE
 30" = 1'-0" SCALE
 30 1/4" = 1'-0" SCALE
 30 1/2" = 1'-0" SCALE
 30 3/4" = 1'-0" SCALE
 31" = 1'-0" SCALE
 31 1/4" = 1'-0" SCALE
 31 1/2" = 1'-0" SCALE
 31 3/4" = 1'-0" SCALE
 32" = 1'-0" SCALE
 32 1/4" = 1'-0" SCALE
 32 1/2" = 1'-0" SCALE
 32 3/4" = 1'-0" SCALE
 33" = 1'-0" SCALE
 33 1/4" = 1'-0" SCALE
 33 1/2" = 1'-0" SCALE
 33 3/4" = 1'-0" SCALE
 34" = 1'-0" SCALE
 34 1/4" = 1'-0" SCALE
 34 1/2" = 1'-0" SCALE
 34 3/4" = 1'-0" SCALE
 35" = 1'-0" SCALE
 35 1/4" = 1'-0" SCALE
 35 1/2" = 1'-0" SCALE
 35 3/4" = 1'-0" SCALE
 36" = 1'-0" SCALE
 36 1/4" = 1'-0" SCALE
 36 1/2" = 1'-0" SCALE
 36 3/4" = 1'-0" SCALE
 37" = 1'-0" SCALE
 37 1/4" = 1'-0" SCALE
 37 1/2" = 1'-0" SCALE
 37 3/4" = 1'-0" SCALE
 38" = 1'-0" SCALE
 38 1/4" = 1'-0" SCALE
 38 1/2" = 1'-0" SCALE
 38 3/4" = 1'-0" SCALE
 39" = 1'-0" SCALE
 39 1/4" = 1'-0" SCALE
 39 1/2" = 1'-0" SCALE
 39 3/4" = 1'-0" SCALE
 40" = 1'-0" SCALE
 40 1/4" = 1'-0" SCALE
 40 1/2" = 1'-0" SCALE
 40 3/4" = 1'-0" SCALE
 41" = 1'-0" SCALE
 41 1/4" = 1'-0" SCALE
 41 1/2" = 1'-0" SCALE
 41 3/4" = 1'-0" SCALE
 42" = 1'-0" SCALE
 42 1/4" = 1'-0" SCALE
 42 1/2" = 1'-0" SCALE
 42 3/4" = 1'-0" SCALE
 43" = 1'-0" SCALE
 43 1/4" = 1'-0" SCALE
 43 1/2" = 1'-0" SCALE
 43 3/4" = 1'-0" SCALE
 44" = 1'-0" SCALE
 44 1/4" = 1'-0" SCALE
 44 1/2" = 1'-0" SCALE
 44 3/4" = 1'-0" SCALE
 45" = 1'-0" SCALE
 45 1/4" = 1'-0" SCALE
 45 1/2" = 1'-0" SCALE
 45 3/4" = 1'-0" SCALE
 46" = 1'-0" SCALE
 46 1/4" = 1'-0" SCALE
 46 1/2" = 1'-0" SCALE
 46 3/4" = 1'-0" SCALE
 47" = 1'-0" SCALE
 47 1/4" = 1'-0" SCALE
 47 1/2" = 1'-0" SCALE
 47 3/4" = 1'-0" SCALE
 48" = 1'-0" SCALE
 48 1/4" = 1'-0" SCALE
 48 1/2" = 1'-0" SCALE
 48 3/4" = 1'-0" SCALE
 49" = 1'-0" SCALE
 49 1/4" = 1'-0" SCALE
 49 1/2" = 1'-0" SCALE
 49 3/4" = 1'-0" SCALE
 50" = 1'-0" SCALE
 50 1/4" = 1'-0" SCALE
 50 1/2" = 1'-0" SCALE
 50 3/4" = 1'-0" SCALE
 51" = 1'-0" SCALE
 51 1/4" = 1'-0" SCALE
 51 1/2" = 1'-0" SCALE
 51 3/4" = 1'-0" SCALE
 52" = 1'-0" SCALE
 52 1/4" = 1'-0" SCALE
 52 1/2" = 1'-0" SCALE
 52 3/4" = 1'-0" SCALE
 53" = 1'-0" SCALE
 53 1/4" = 1'-0" SCALE
 53 1/2" = 1'-0" SCALE
 53 3/4" = 1'-0" SCALE
 54" = 1'-0" SCALE
 54 1/4" = 1'-0" SCALE
 54 1/2" = 1'-0" SCALE
 54 3/4" = 1'-0" SCALE
 55" = 1'-0" SCALE
 55 1/4" = 1'-0" SCALE
 55 1/2" = 1'-0" SCALE
 55 3/4" = 1'-0" SCALE
 56" = 1'-0" SCALE
 56 1/4" = 1'-0" SCALE
 56 1/2" = 1'-0" SCALE
 56 3/4" = 1'-0" SCALE
 57" = 1'-0" SCALE
 57 1/4" = 1'-0" SCALE
 57 1/2" = 1'-0" SCALE
 57 3/4" = 1'-0" SCALE
 58" = 1'-0" SCALE
 58 1/4" = 1'-0" SCALE
 58 1/2" = 1'-0" SCALE
 58 3/4" = 1'-0" SCALE
 59" = 1'-0" SCALE
 59 1/4" = 1'-0" SCALE
 59 1/2" = 1'-0" SCALE
 59 3/4" = 1'-0" SCALE
 60" = 1'-0" SCALE
 60 1/4" = 1'-0" SCALE
 60 1/2" = 1'-0" SCALE
 60 3/4" = 1'-0" SCALE
 61" = 1'-0" SCALE
 61 1/4" = 1'-0" SCALE
 61 1/2" = 1'-0" SCALE
 61 3/4" = 1'-0" SCALE
 62" = 1'-0" SCALE
 62 1/4" = 1'-0" SCALE
 62 1/2" = 1'-0" SCALE
 62 3/4" = 1'-0" SCALE
 63" = 1'-0" SCALE
 63 1/4" = 1'-0" SCALE
 63 1/2" = 1'-0" SCALE
 63 3/4" = 1'-0" SCALE
 64" = 1'-0" SCALE
 64 1/4" = 1'-0" SCALE
 64 1/2" = 1'-0" SCALE
 64 3/4" = 1'-0" SCALE
 65" = 1'-0" SCALE
 65 1/4" = 1'-0" SCALE
 65 1/2" = 1'-0" SCALE
 65 3/4" = 1'-0" SCALE
 66" = 1'-0" SCALE
 66 1/4" = 1'-0" SCALE
 66 1/2" = 1'-0" SCALE
 66 3/4" = 1'-0" SCALE
 67" = 1'-0" SCALE
 67 1/4" = 1'-0" SCALE
 67 1/2" = 1'-0" SCALE
 67 3/4" = 1'-0" SCALE
 68" = 1'-0" SCALE
 68 1/4" = 1'-0" SCALE
 68 1/2" = 1'-0" SCALE
 68 3/4" = 1'-0" SCALE
 69" = 1'-0" SCALE
 69 1/4" = 1'-0" SCALE
 69 1/2" = 1'-0" SCALE
 69 3/4" = 1'-0" SCALE
 70" = 1'-0" SCALE
 70 1/4" = 1'-0" SCALE
 70 1/2" = 1'-0" SCALE
 70 3/4" = 1'-0" SCALE
 71" = 1'-0" SCALE
 71 1/4" = 1'-0" SCALE
 71 1/2" = 1'-0" SCALE
 71 3/4" = 1'-0" SCALE
 72" = 1'-0" SCALE
 72 1/4" = 1'-0" SCALE
 72 1/2" = 1'-0" SCALE
 72 3/4" = 1'-0" SCALE
 73" = 1'-0" SCALE
 73 1/4" = 1'-0" SCALE
 73 1/2" = 1'-0" SCALE
 73 3/4" = 1'-0" SCALE
 74" = 1'-0" SCALE
 74 1/4" = 1'-0" SCALE
 74 1/2" = 1'-0" SCALE
 74 3/4" = 1'-0" SCALE
 75" = 1'-0" SCALE
 75 1/4" = 1'-0" SCALE
 75 1/2" = 1'-0" SCALE
 75 3/4" = 1'-0" SCALE
 76" = 1'-0" SCALE
 76 1/4" = 1'-0" SCALE
 76 1/2" = 1'-0" SCALE
 76 3/4" = 1'-0" SCALE
 77" = 1'-0" SCALE
 77 1/4" = 1'-0" SCALE
 77 1/2" = 1'-0" SCALE
 77 3/4" = 1'-0" SCALE
 78" = 1'-0" SCALE
 78 1/4" = 1'-0" SCALE
 78 1/2" = 1'-0" SCALE
 78 3/4" = 1'-0" SCALE
 79" = 1'-0" SCALE
 79 1/4" = 1'-0" SCALE
 79 1/2" = 1'-0" SCALE
 79 3/4" = 1'-0" SCALE
 80" = 1'-0" SCALE
 80 1/4" = 1'-0" SCALE
 80 1/2" = 1'-0" SCALE
 80 3/4" = 1'-0" SCALE
 81" = 1'-0" SCALE
 81 1/4" = 1'-0" SCALE
 81 1/2" = 1'-0" SCALE
 81 3/4" = 1'-0" SCALE
 82" = 1'-0" SCALE
 82 1/4" = 1'-0" SCALE
 82 1/2" = 1'-0" SCALE
 82 3/4" = 1'-0" SCALE
 83" = 1'-0" SCALE
 83 1/4" = 1'-0" SCALE
 83 1/2" = 1'-0" SCALE
 83 3/4" = 1'-0" SCALE
 84" = 1'-0" SCALE
 84 1/4" = 1'-0" SCALE
 84 1/2" = 1'-0" SCALE
 84 3/4" = 1'-0" SCALE
 85" = 1'-0" SCALE
 85 1/4" = 1'-0" SCALE
 85 1/2" = 1'-0" SCALE
 85 3/4" = 1'-0" SCALE
 86" = 1'-0" SCALE
 86 1/4" = 1'-0" SCALE
 86 1/2" = 1'-0" SCALE
 86 3/4" = 1'-0" SCALE
 87" = 1'-0" SCALE
 87 1/4" = 1'-0" SCALE
 87 1/2" = 1'-0" SCALE
 87 3/4" = 1'-0" SCALE
 88" = 1'-0" SCALE
 88 1/4" = 1'-0" SCALE
 88 1/2" = 1'-0" SCALE
 88 3/4" = 1'-0" SCALE
 89" = 1'-0" SCALE
 89 1/4" = 1'-0" SCALE
 89 1/2" = 1'-0" SCALE
 89 3/4" = 1'-0" SCALE
 90" = 1'-0" SCALE
 90 1/4" = 1'-0" SCALE
 90 1/2" = 1'-0" SCALE
 90 3/4" = 1'-0" SCALE
 91" = 1'-0" SCALE
 91 1/4" = 1'-0" SCALE
 91 1/2" = 1'-0" SCALE
 91 3/4" = 1'-0" SCALE
 92" = 1'-0" SCALE
 92 1/4" = 1'-0" SCALE
 92 1/2" = 1'-0" SCALE
 92 3/4" = 1'-0" SCALE
 93" = 1'-0" SCALE
 93 1/4" = 1'-0" SCALE
 93 1/2" = 1'-0" SCALE
 93 3/4" = 1'-0" SCALE
 94" = 1'-0" SCALE
 94 1/4" = 1'-0" SCALE
 94 1/2" = 1'-0" SCALE
 94 3/4" = 1'-0" SCALE
 95" = 1'-0" SCALE
 95 1/4" = 1'-0" SCALE
 95 1/2" = 1'-0" SCALE
 95 3/4" = 1'-0" SCALE
 96" = 1'-0" SCALE
 96 1/4" = 1'-0" SCALE
 96 1/2" = 1'-0" SCALE
 96 3/4" = 1'-0" SCALE
 97" = 1'-0" SCALE
 97 1/4" = 1'-0" SCALE
 97 1/2" = 1'-0" SCALE
 97 3/4" = 1'-0" SCALE
 98" = 1'-0" SCALE
 98 1/4" = 1'-0" SCALE
 98 1/2" = 1'-0" SCALE
 98 3/4" = 1'-0" SCALE
 99" = 1'-0" SCALE
 99 1/4" = 1'-0" SCALE
 99 1/2" = 1'-0" SCALE
 99 3/4" = 1'-0" SCALE
 100" = 1'-0" SCALE

This drawing contains intellectual property of DCR Engineering Services, Inc. All ideas, designs, arrangements and know-how remain the property of DCR Engineering Services, Inc. Any use of this information by entities other than the title block named entity is prohibited. Use of the drawing by the title block named entity is limited to the specific title block named project. Use on other projects is strictly prohibited.

REV.	DESCRIPTION	BY	APPROV.	DATE	REV.	DESCRIPTION	BY	APPROV.	DATE	PROJECT	PROJ. NO.
A	ISSUED FOR REVIEW	DBT	GLM	08-13-10						1900F	1900F
										1900F-M25-001	1900F-M25-001
										AS NOTED	AS NOTED
										LATEST REV. DATE	08-13-10

DCR Engineering Services, Inc.
 3912A Brookridge Pkwy, Tampa, FL 33610
 PHONE: 813-418-1340 FAX: 813-418-3385
 Florida Certificate of Authorization No. 00008133

CEMEX
 KILN 2 DUST TO FINISH MILL 2 PROJECT
 GENERAL ARRANGEMENTS
 ELEVATIONS
 DWG. NO. 1900F-M25-001 REV. A



PLAN - TOC EL. 76'-0"
SCALE: 1/4" = 1'-0"

This drawing contains intellectual property of DCR Engineering Services, Inc. All ideas, designs, arrangements and know-how remain the property of DCR Engineering Services, Inc. Any use of this information by entities other than the title block named entity is prohibited. Use of this drawing by the title block named entity is limited to the specific title block named project. Use on other projects is strictly prohibited.

REV.	ISSUED FOR REVIEW	DRAWING HISTORY	BY	APPR.	DATE	REV.	DRAWING HISTORY	BY	APPR.	DATE	ENGINEER	KEY	PROJ. NO.
A	ISSUED FOR REVIEW		BJC	DBT	08-13-10						DBT	07-03-10	1900F
												08-13-10	1900F-M20-001
												08-13-10	SCALE AS NOTED
												08-13-10	LATEST REV DATE 08-13-10

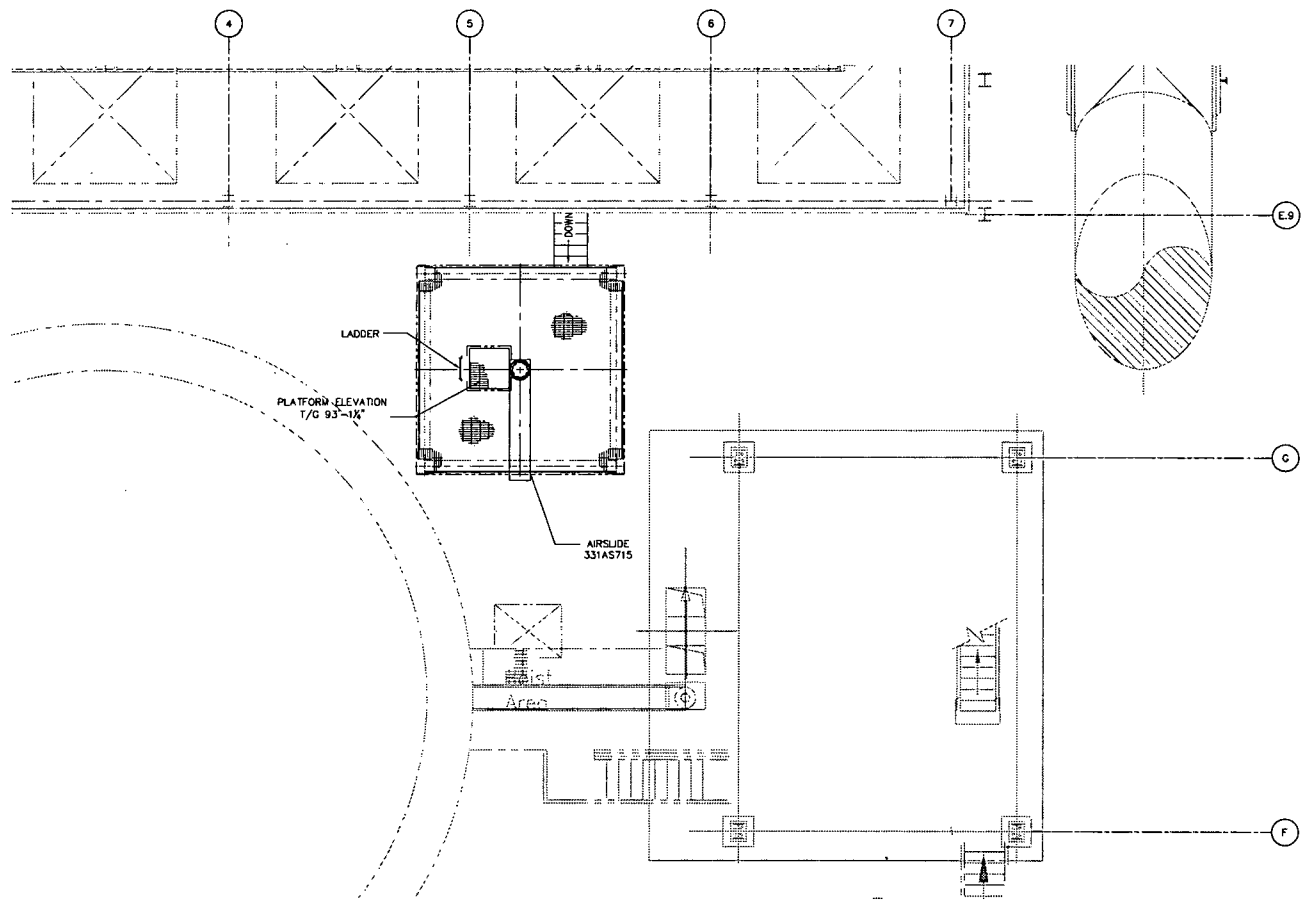
DCR Engineering Services, Inc.

5912A Brookridge Pkwy., Tampa, FL 33610
PHONE: 813-418-3340 FAX: 813-418-3355
Florida Certificate of Authorization No. 00008133

CEMEX

KILN 2 DUST TO FINISH MILL 2 PROJECT
GENERAL ARRANGEMENT
PLAN TOC EL. 76'-0"
1900F-M20-001

DATE: 08-13-10
REV: A

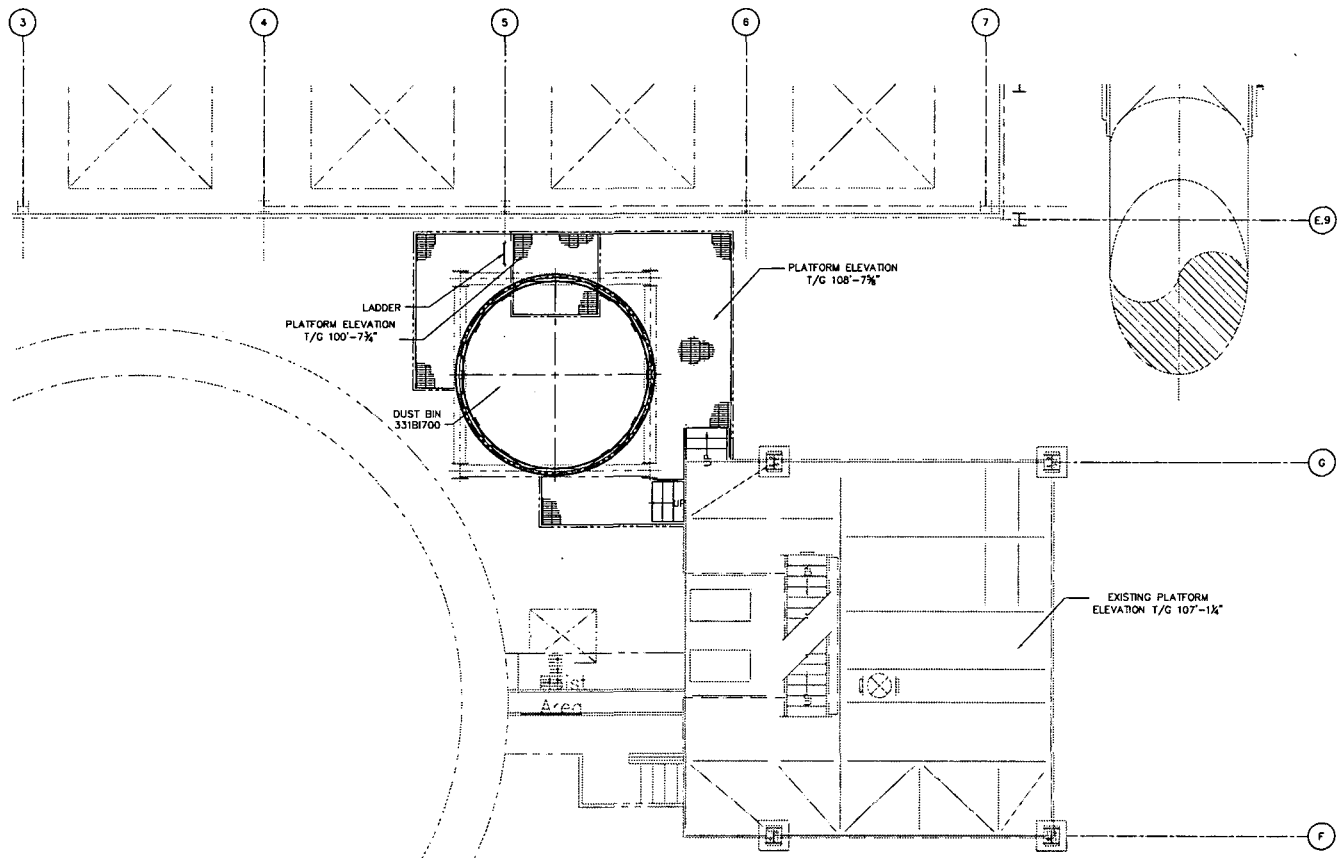


PLAN - T/G EL. 90'-1 1/4"
SCALE: 1/4" = 1'-0"

This drawing contains intellectual property of DCR Engineering Services, Inc. All ideas, designs, arrangements and know-how remain the property of DCR Engineering Services, Inc. Any use of this information by entities other than the title block named entity is prohibited. Use of this drawing by the title block named entity is limited to the specific title block named project. Use on other projects is strictly prohibited.

REV.	ISSUED FOR REVIEW	DRAWING HISTORY	BY	APPR.	DATE	REV.	DRAWING HISTORY	BY	APPR.	DATE	ENGINEER	KFF	PROJ. NO.	1900F
A			ESC	C-R	08-13-10						DESIGNED BY	DBT	08-13-10	1900F-M20-001
											DRAWN BY	BLD	08-13-10	AS NOTED
											DESIGN SUPV.	CLM	08-13-10	DATELIST REV DATE 08-13-10

DCR Engineering Services, Inc.	
<small>5012A Brockway Ave., Tampa, FL 33610 PHONE: 813-918-1340 FAX: 813-918-1388 Florida Certificate of Authorization No. 00008133</small>	
CEMEX	
KILN 2 DUST TO FINISH MILL 2 PROJECT	
GENERAL ARRANGEMENT	
PLAN T/G EL. 90'-1 1/4"	
PROJ. NO.	1900F-M20-002
REV.	A



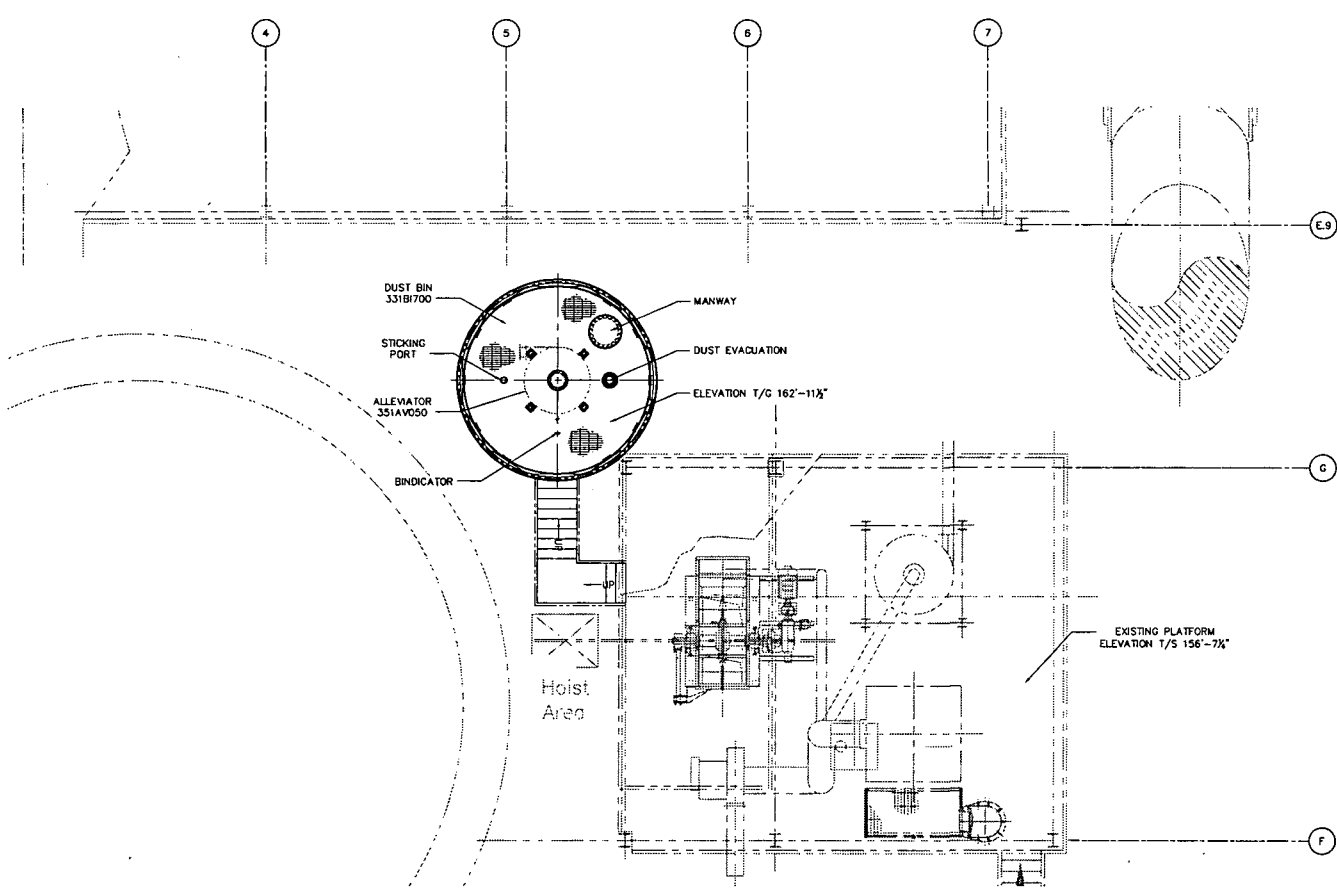
PLAN - T/G EL. 108'-7 5/8" U.O.N.
SCALE: 1/4" = 1'-0"

1" = 1'-0" GRAPHIC SCALE
 CALIBRATION
 1" = 1'-0" GRAPHIC SCALE

This drawing contains intellectual property of Duff Engineering Services, Inc. All ideas, designs, arrangements and know-how remain the property of Duff Engineering Services, Inc. Any use of this information by entities other than the title block named entity is prohibited. Use of this drawing by the title block named entity is limited to the specific title block named project. Use on other projects is strictly prohibited.

REV.	ISSUED FOR REVIEW	DRAWING HISTORY	BY	APPR.	DATE	REV.	DRAWING HISTORY	BY	APPR.	DATE	ENGINEER	DATE	PROJ. NO.
A	ISSUED FOR REVIEW		ESC	CM	08-13-10						KFF	07-05-10	1900F
											DBT	08-13-10	1900F-M20-001
											BJC	08-13-10	SCALE AS NOTED
											CLM	08-13-10	LATEST REV. DATE 08-13-10

DCR Engineering Services, Inc.	
5812A Breckwidge Ave., Tampa, FL 33610 PHONE: 813-418-1500 FAX: 813-418-1505 Florida Certificate of Authorization No. 00008133	
CEMEX	
KILN 2 DUST TO FINISH MILL 2 PROJECT	
GENERAL ARRANGEMENT	
PLAN T/G EL. 108'-7 5/8"	
DWG. NO.	1900F-M20-003 REV. A



PLAN - T/G EL. 162'-11 1/2"

SCALE: 1/4" = 1'-0"

1" = 1'-0" GRAPHIC SCALE
 CALIBRATION: 08/13/10
 1" = 1'-0" GRAPHIC SCALE

This drawing contains intellectual property of DCR Engineering Services, Inc. All ideas, designs, arrangements and know-how remain the property of DCR Engineering Services, Inc. Any use of this information by entities other than the title block named entity is prohibited. Use of this drawing by the title block named entity is limited to the specific title block named project. Use on other projects is strictly prohibited.

REV.	ISSUED FOR REVIEW	DRAWING HISTORY	BY	APPR.	DATE	REV.	DRAWING HISTORY	BY	APPR.	DATE	ENGINEER	CHK	07-05-10	PROJ. NO.	1900F
A	ISSUED FOR REVIEW		ELC	ELC	08-13-10			ELC	DBT	08-13-10	DBT	08-13-10	1900F-M20-001	08-13-10	1900F-M20-001
													08-13-10	AS NOTED	
													08-13-10	LATEST REV. DATE	08-13-10

DCR Engineering Services, Inc.	
5812A Brookridge Way, Tampa, FL 33610 PHONE: 813-418-1340 FAX: 813-418-1355 Florida Certificate of Authorization No. 00008133	
CEMEX	
KILN 2 DUST TO FINISH MILL 2 PROJECT	
GENERAL ARRANGEMENT	
PLAN T/G EL. 162'-11 1/2"	
DWG. NO.	1900F-M20-004 REV. A