



OCCIDENTAL CHEMICAL COMPANY, FLORIDA OPERATIONS, Post Office Box 300, White Springs, Florida 32096, Telephone 904 397-8101

October 28, 1980

Mr. Willard Hanks  
Florida Department of Environmental Regulation  
Twin Towers Office Building  
2600 Blair Stone Road  
Tallahassee, FL 32301



Dear Mr. Hanks:

The enclosed information supplements data sent yesterday concerning design pond water temperatures.

Hope this helps.

Sincerely yours,

OCCIDENTAL CHEMICAL COMPANY

A handwritten signature in cursive script that reads "Wes Atwood".

W. W. Atwood

WWA:sc

Attachment

cc: Mr. D. Pittman, Project Mgr. (w/enc.)  
Mr. R. E. McNeill (w/enc.)

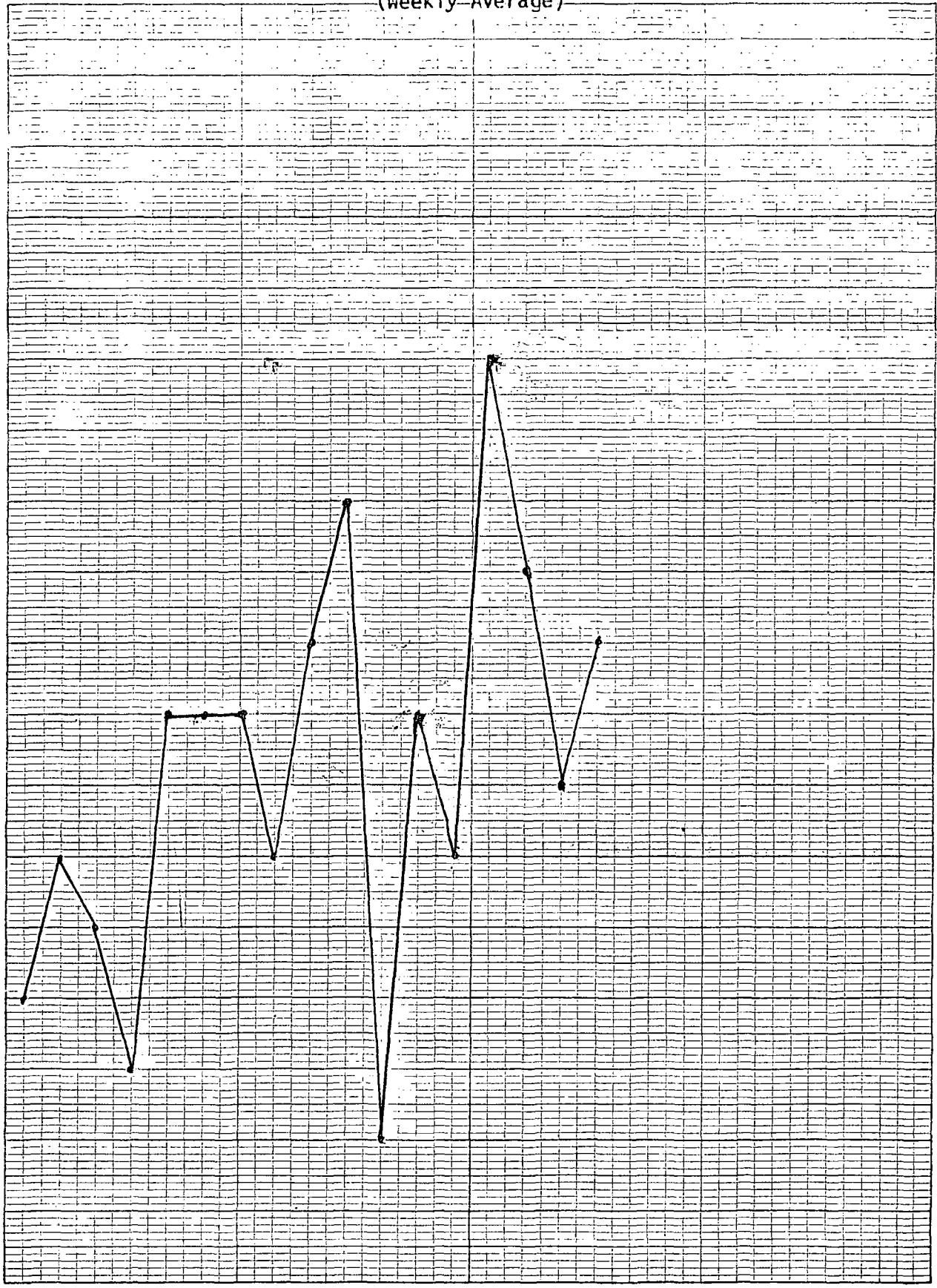
KROCK'S  
WATER  
PROJECT FILE

1970

INCOMING WATER TEMPERATURE  
(Weekly Average)

KE 1 YEAR BY WEEKS 46 3013  
X 180 DIVISIONS  
MADE IN U.S.A.  
KEUFFEL & ESSER CO.

TEMPERATURE - °F



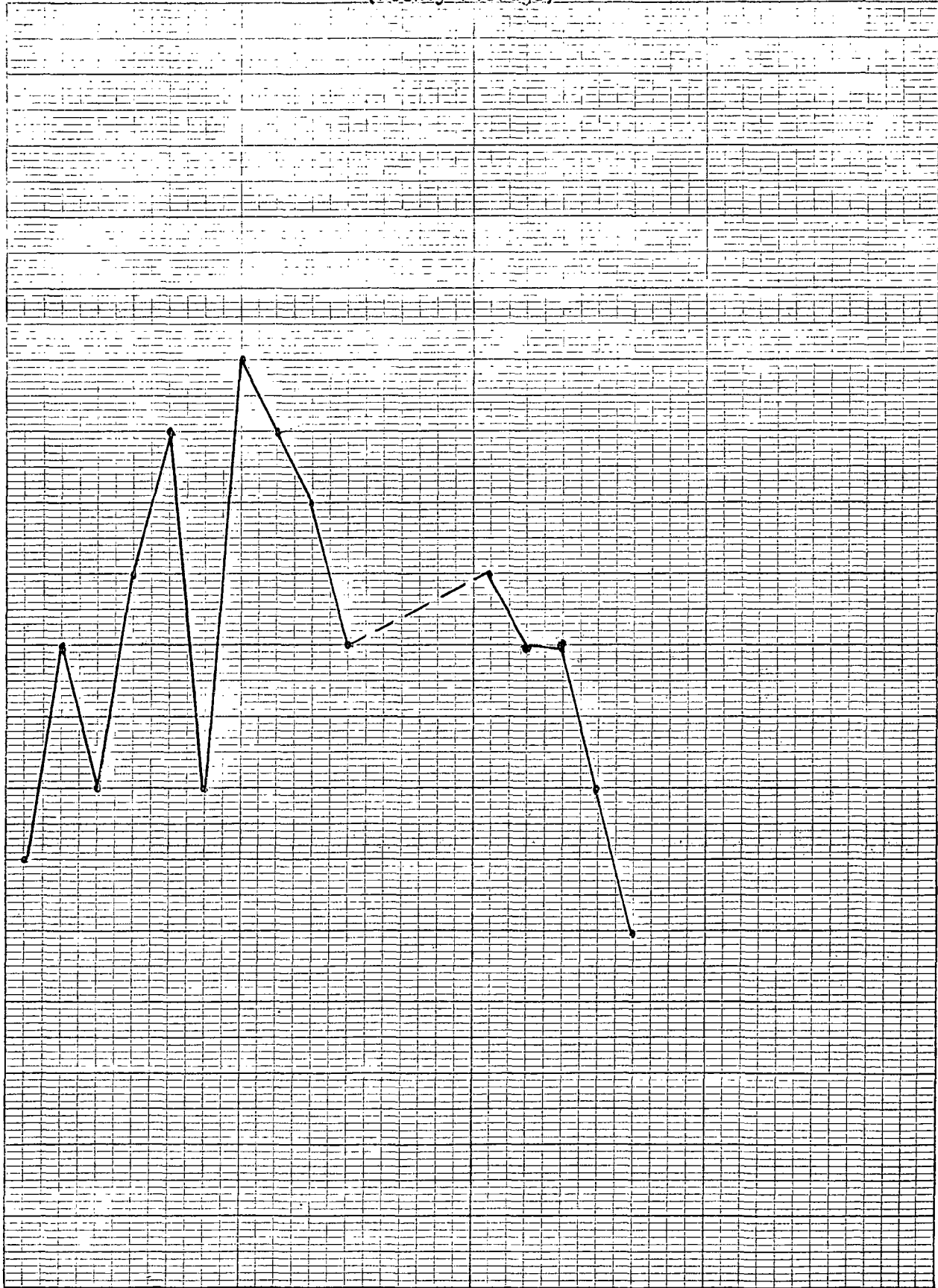
7 14 21 28 5 12 19 26 2 9 16 23 30 6 13 20 27  
JUNE JULY AUGUST SEPTEMBER

WA 12/7/71

1971

INCOMING WATER TEMPERATURE  
(Weekly Average)

TEMPERATURE - °F



1 YEAR BY WEEKS 40 3013  
X 180 DIVISIONS  
MADE IN U.S.A.  
KEUFFEL & ESSER CO.

6 13 20 27 4 11 18 25 1 8 15 22 29 5 12 19 26 30

JUNE

JULY

AUGUST

SEPTEMBER

WA 12/7/71

# POND TEMPERATURES DAYLIGHT MEASUREMENTS OF

1977

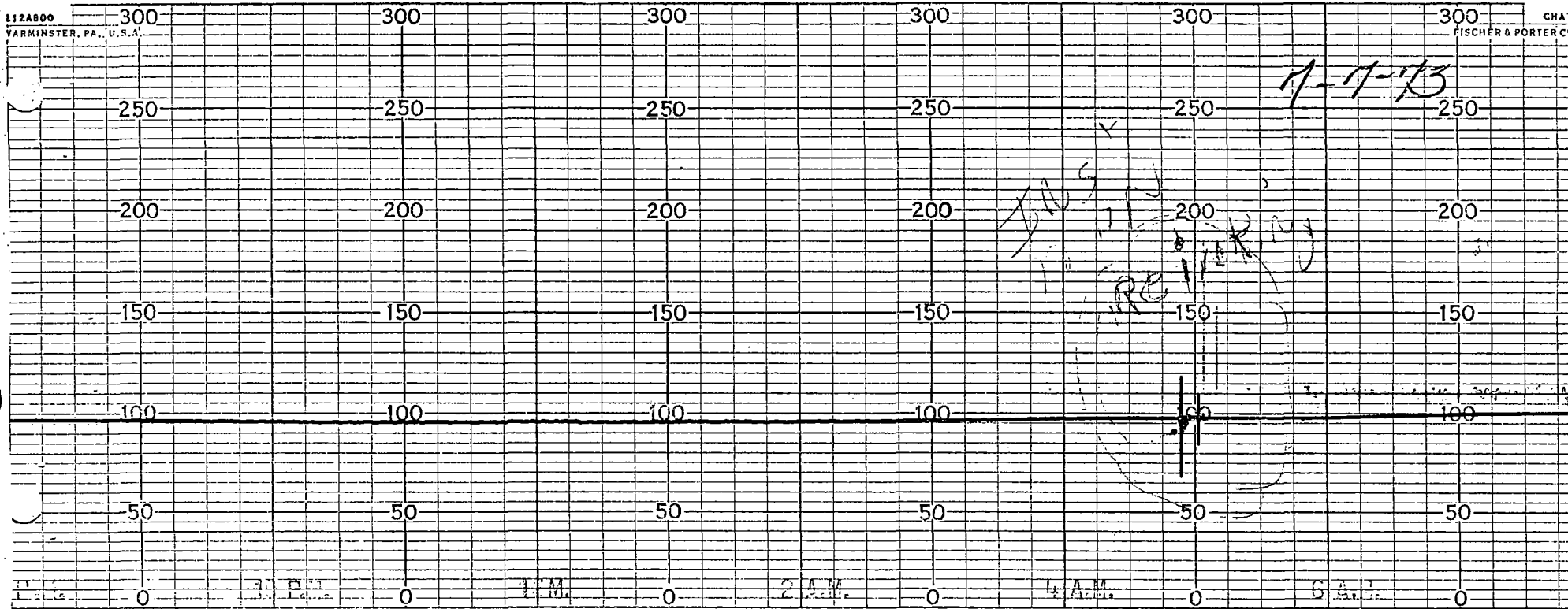
1978

Col 1

Col 2

Col 3

MONTH	1977			Col 1	1978			Col 2	Col 3
	OLD POND	NEW POND	POLLY POND		OLD POND	NEW POND	POLLY POND		
JAN	-	-	-		52	50	71	51	51
FEB	-	-	-		55	50	62	52	52
MAR	69	67	80	68	71	68	82	70	69
APR	74	74	85	74	69	70	85	78	72
MAY	83	81	92	82	81	80	91	81	82
JUNE	85	84	91	85	83	84	93	84	85
JULY	90	92	92	90	84	86	95	85	87
AUG.	89	87	94	88	83	84	89	84	86
SEPT.	84	83	95	84	85	81	92	83	84
OCT	69	71	78	70	72	70	85	71	71
NOV	71	68	86	69	70	70	82	70	70
DEC	58	62	78	60	65	68	73	67	63

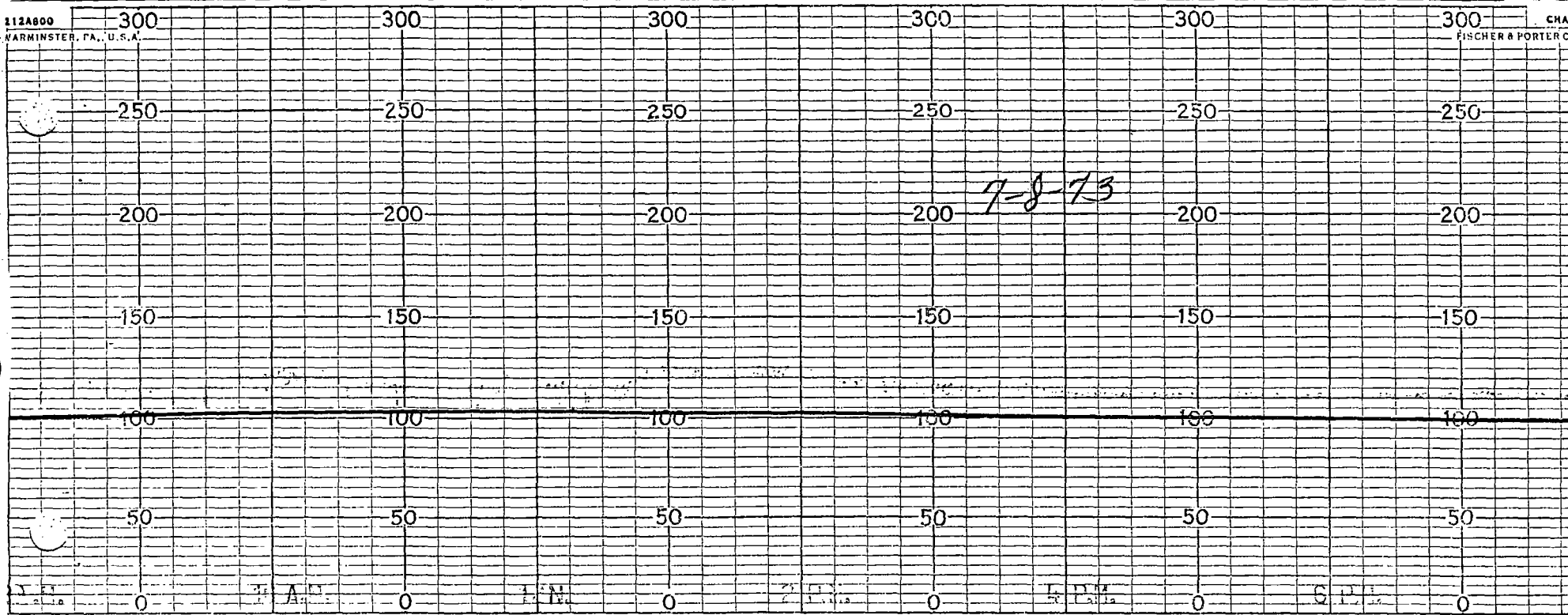


112A800

WARMINSTER, PA., U.S.A.

CHAR

FISCHER & PORTER CO.



250

250

250

250

250

250

200

200

200

200

200

200

7-9-73

150

150

150

150

150

150

100

100

100

100

100

100

50

50

50

50

50

50

0

0

0

0

0

0

212A800

300

300

300

300

300

300

CHAF

WARMINSTER, PA., U.S.A.

FISCHER & PORTER CO

250

250

250

250

250

250

200

200

200

200

200

200

7-10-73

150

150

150

150

150

150

100

100

100

100

100

100

50

50

50

50

50

50

0

0

0

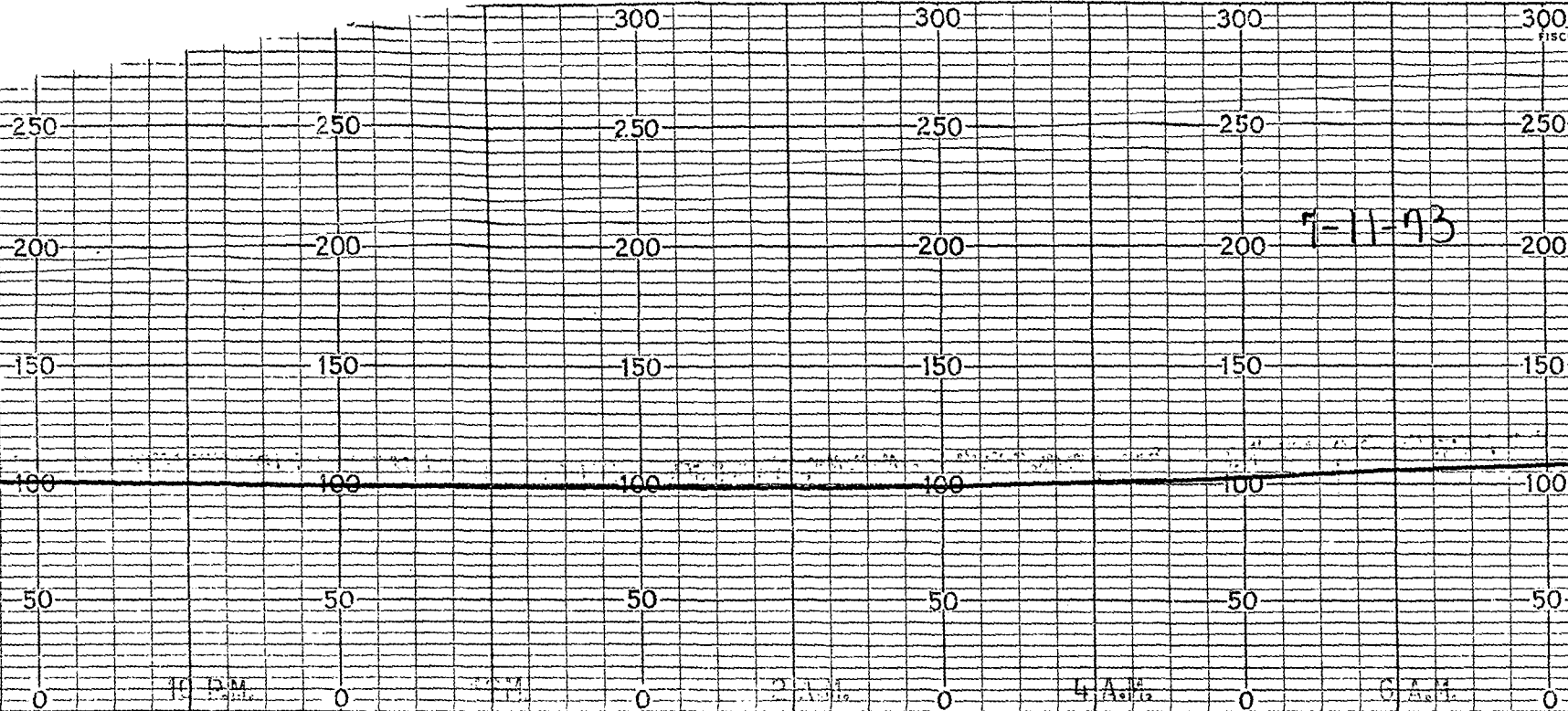
0

0

0

27

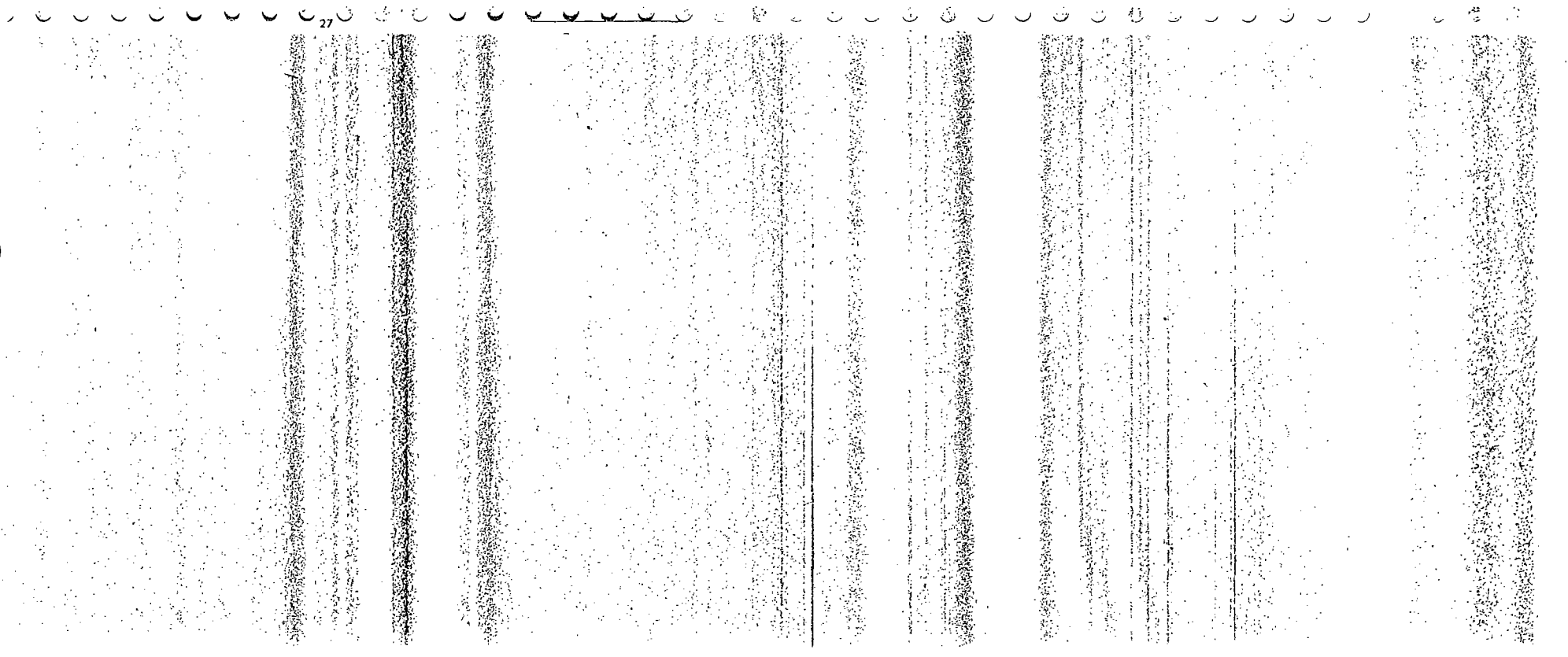
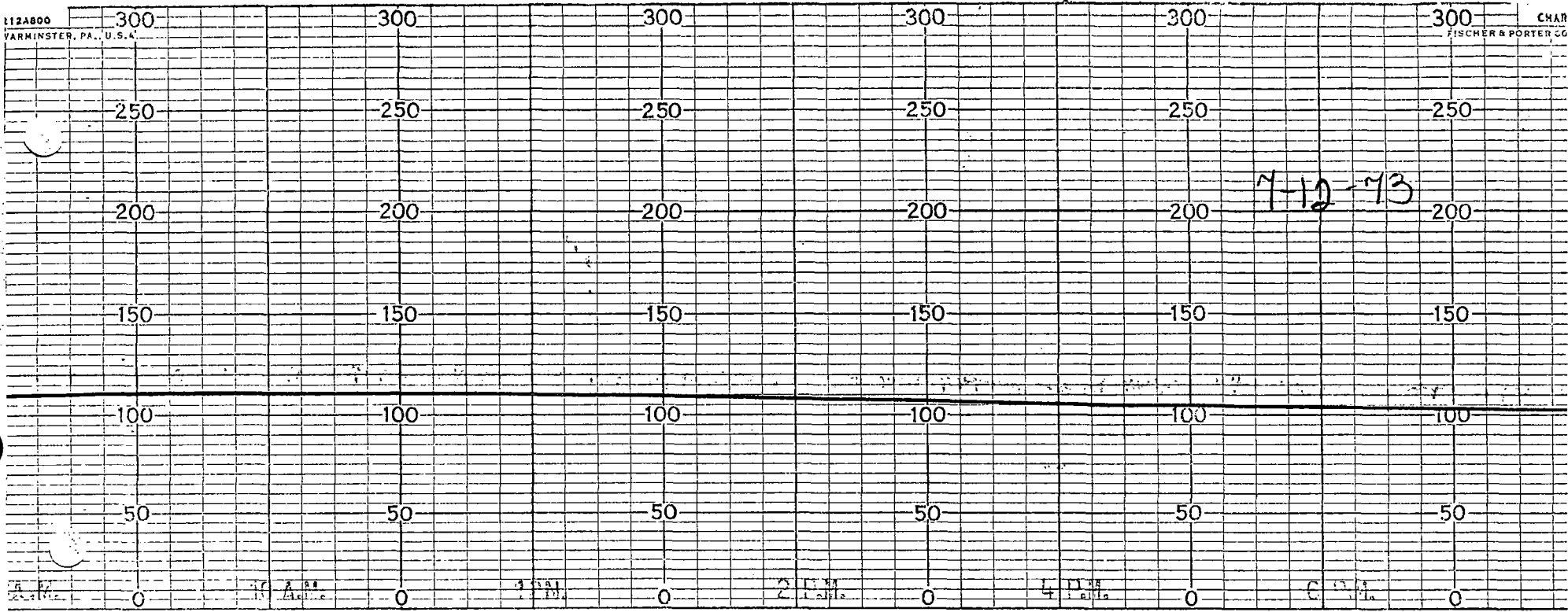


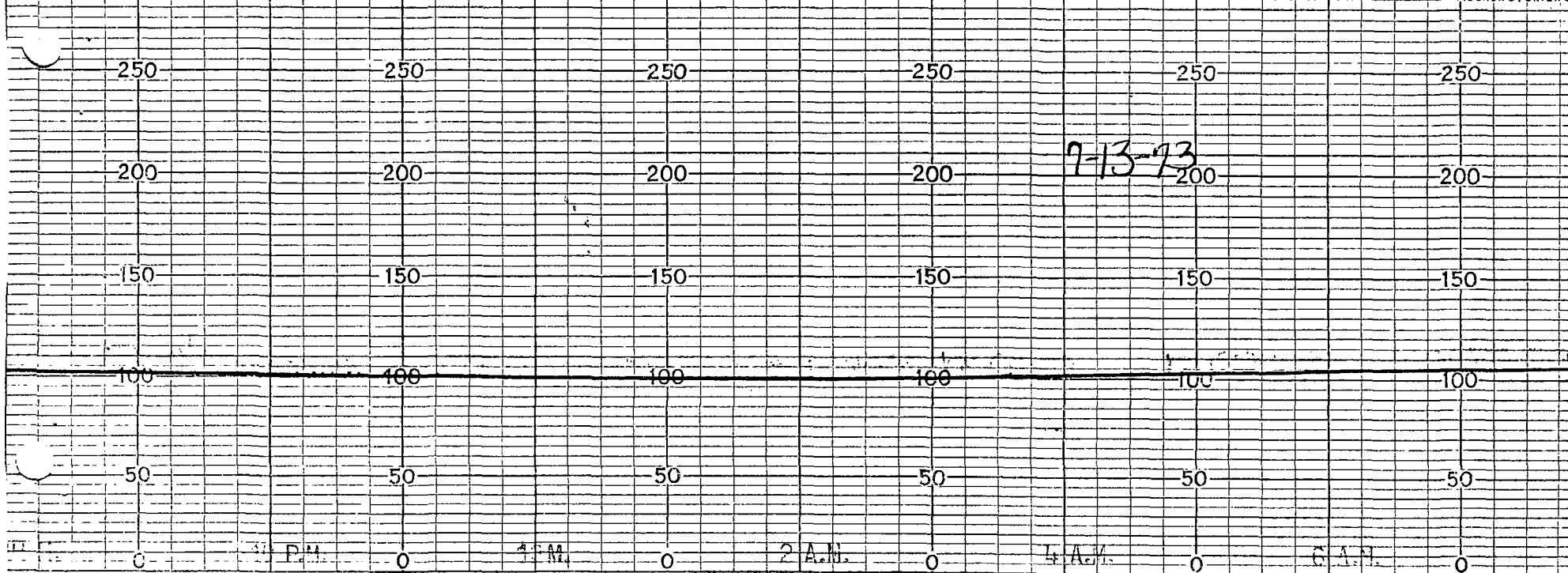


10 DM 20 40 60 80 100 120 140 160 180 200 220 240 260 280 300

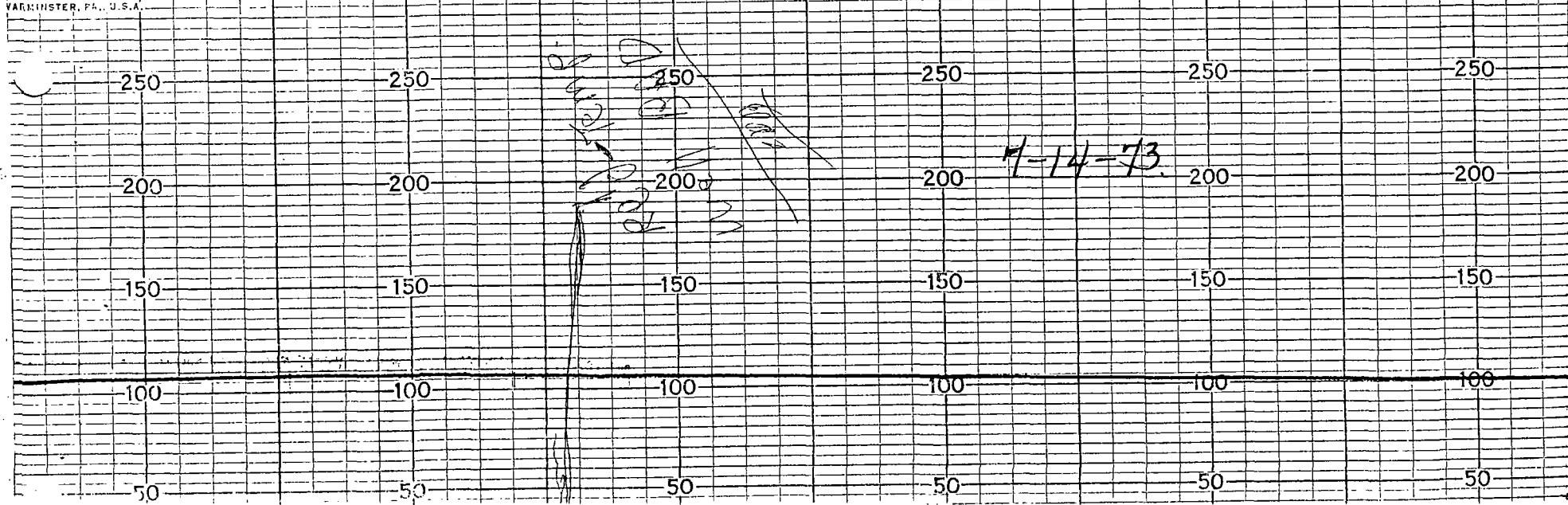
27



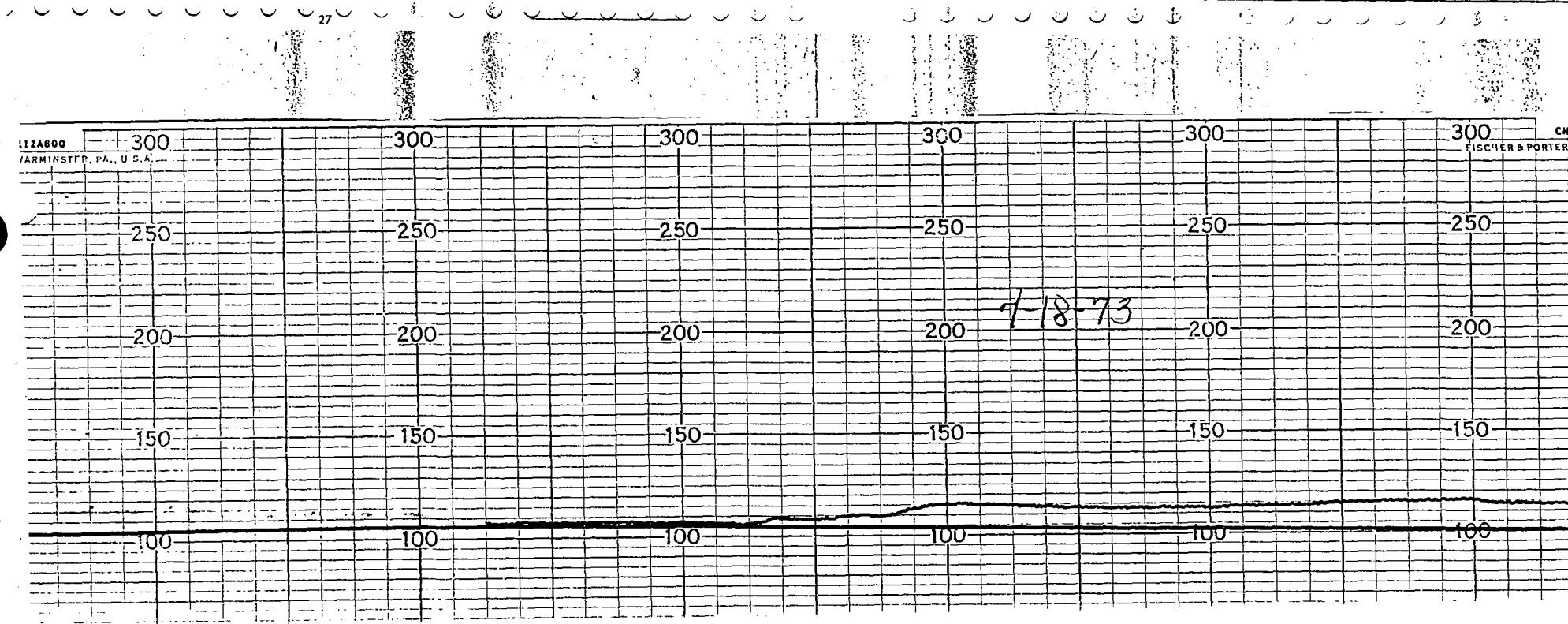
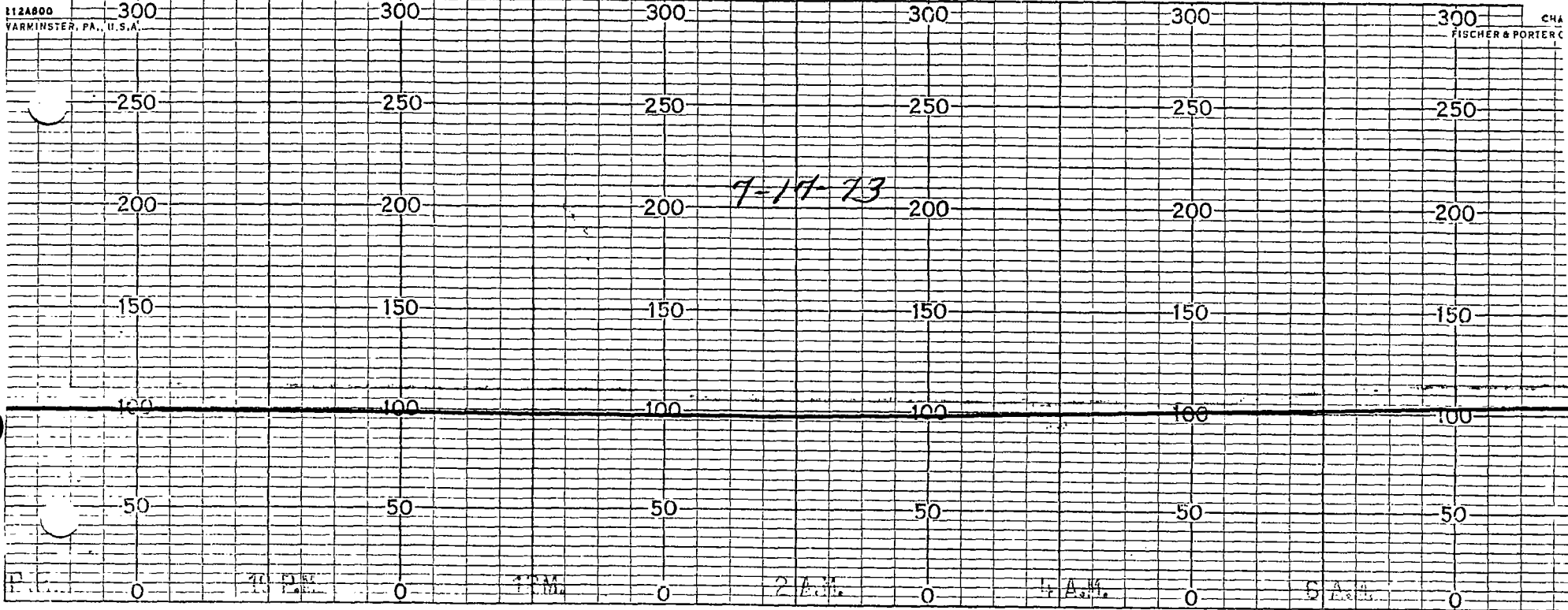


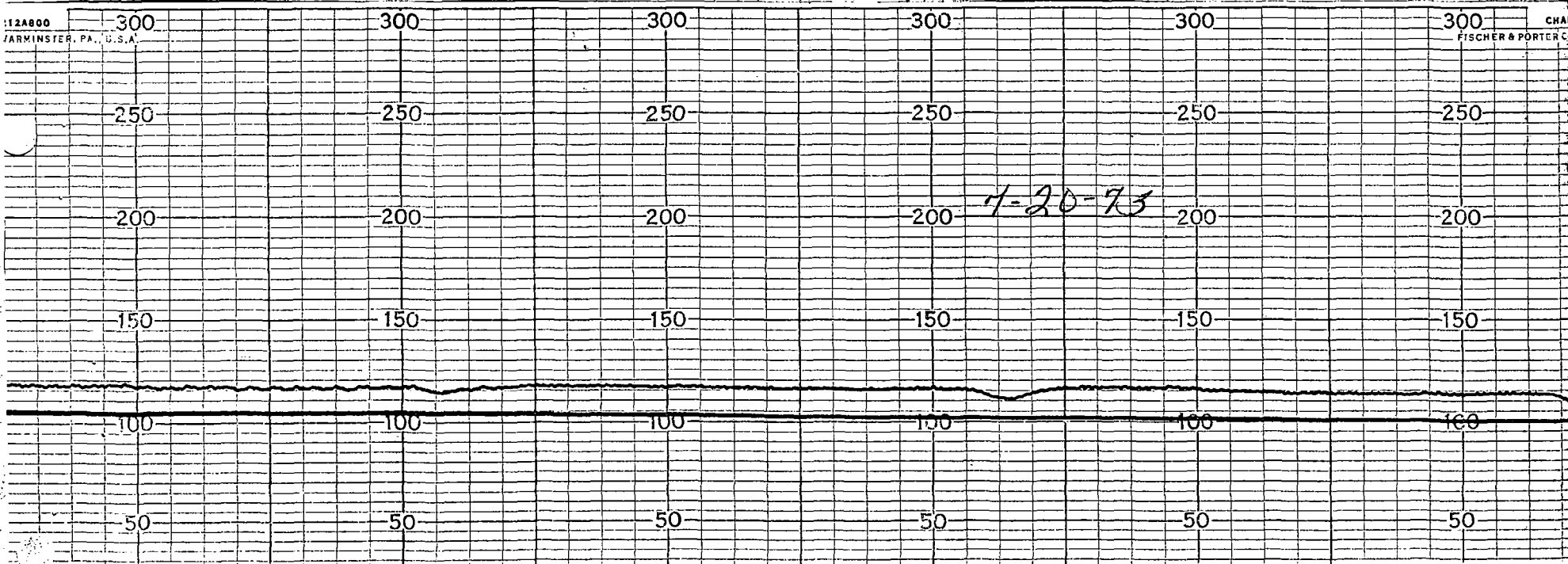


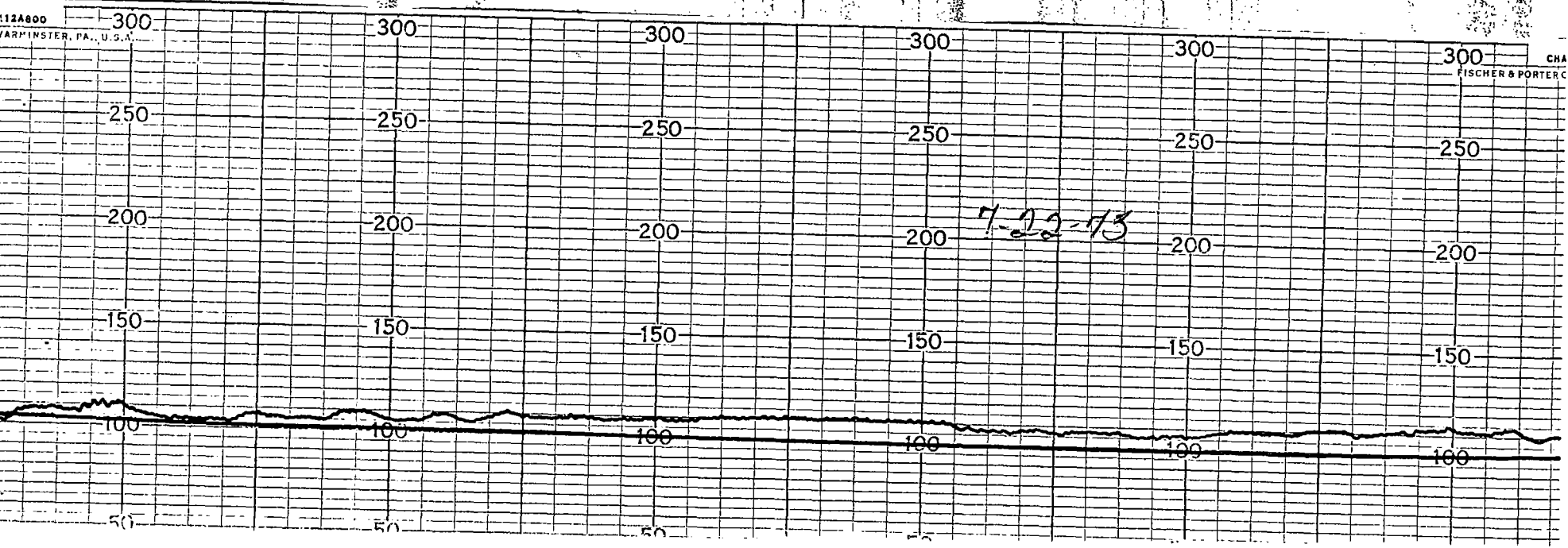
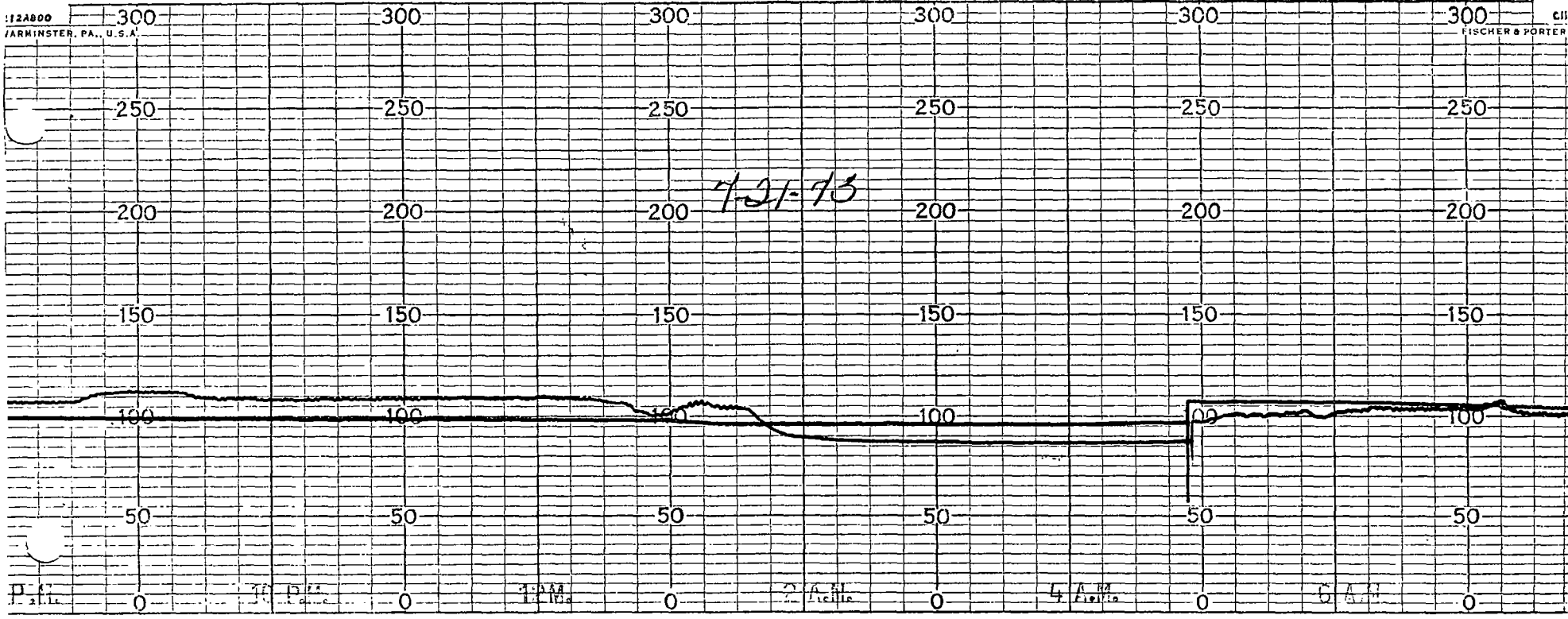
27

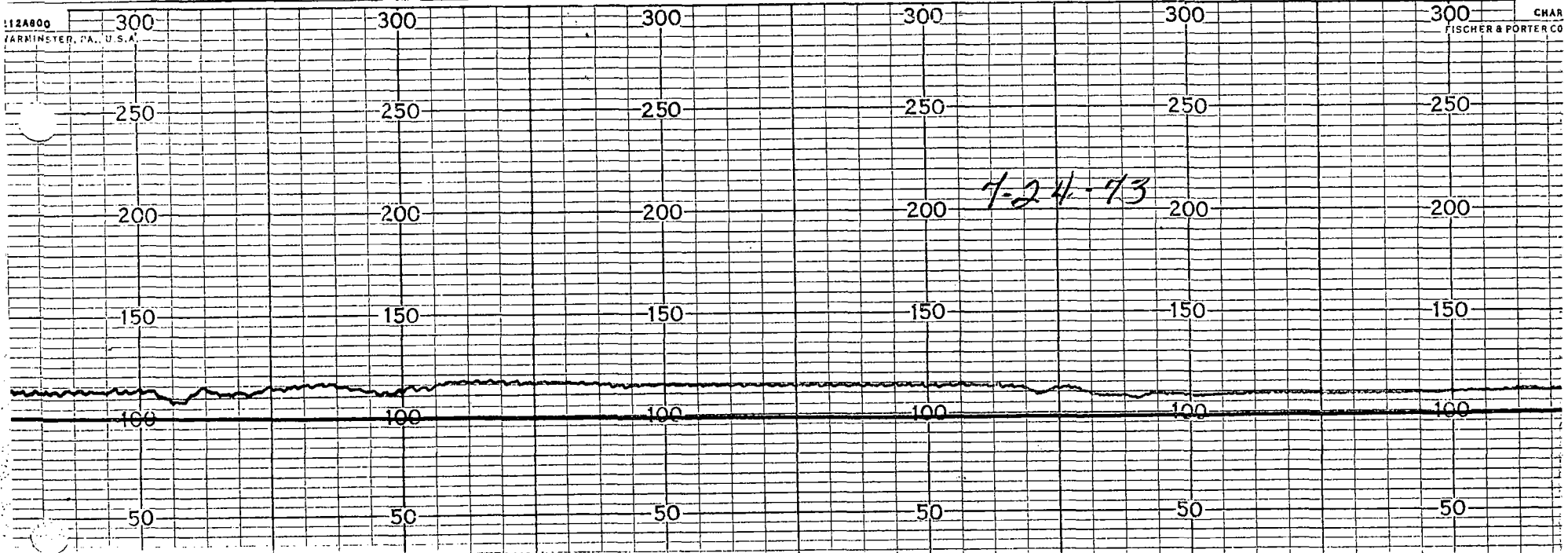
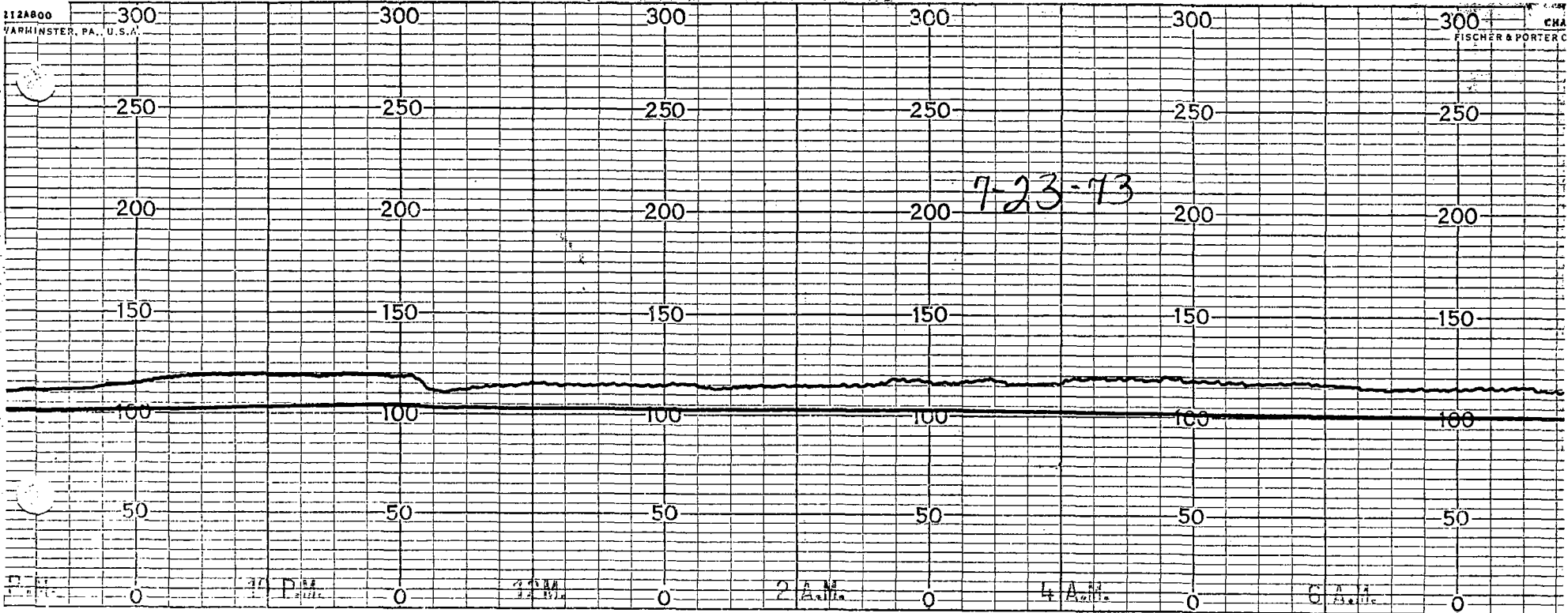








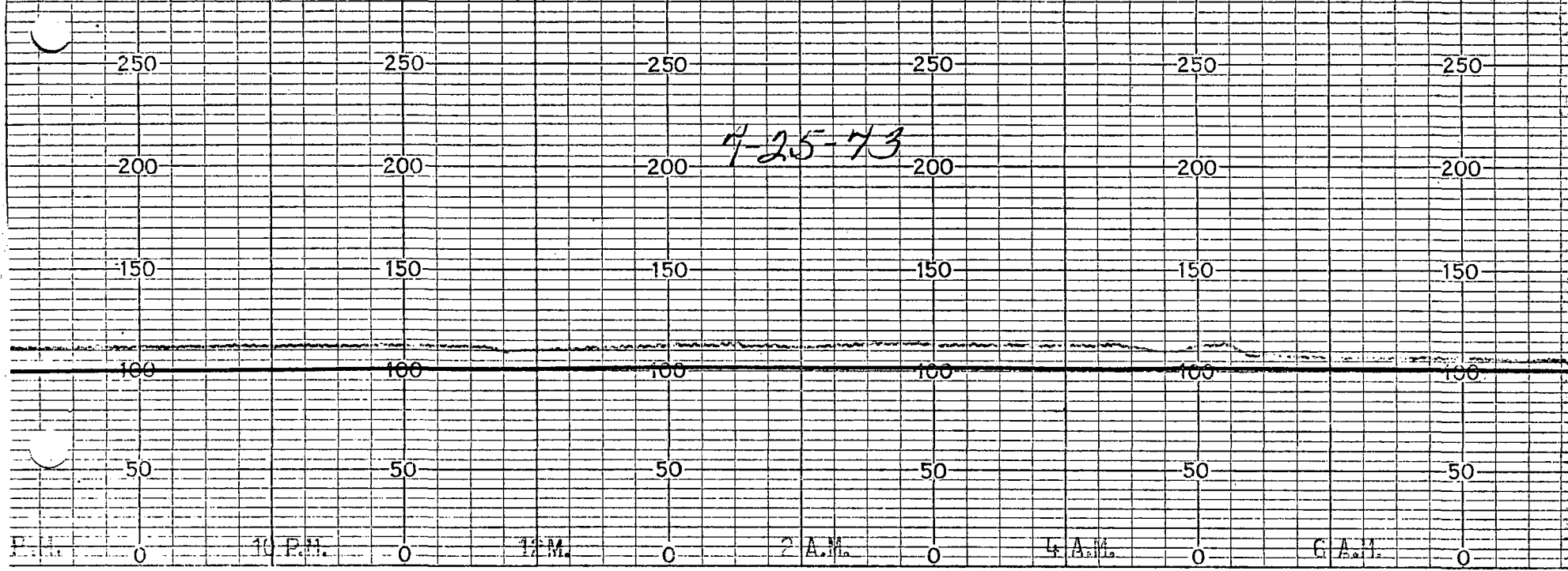






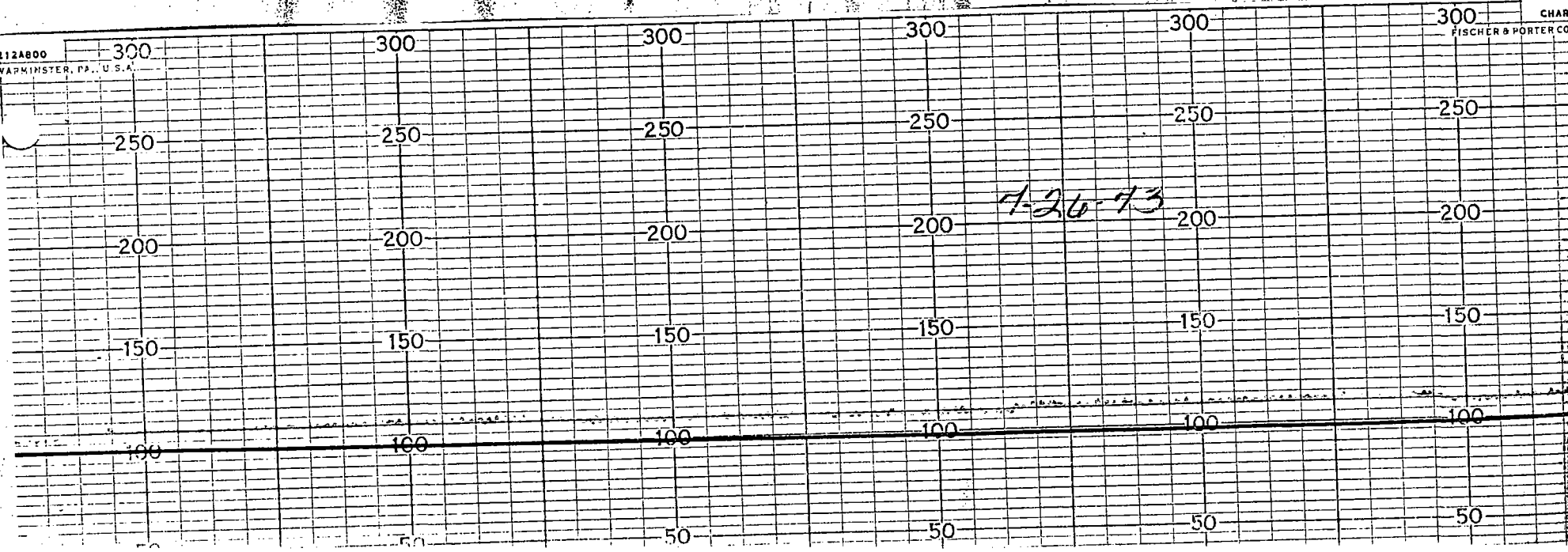
112AB00  
WARMINSTER, PA., U.S.A.

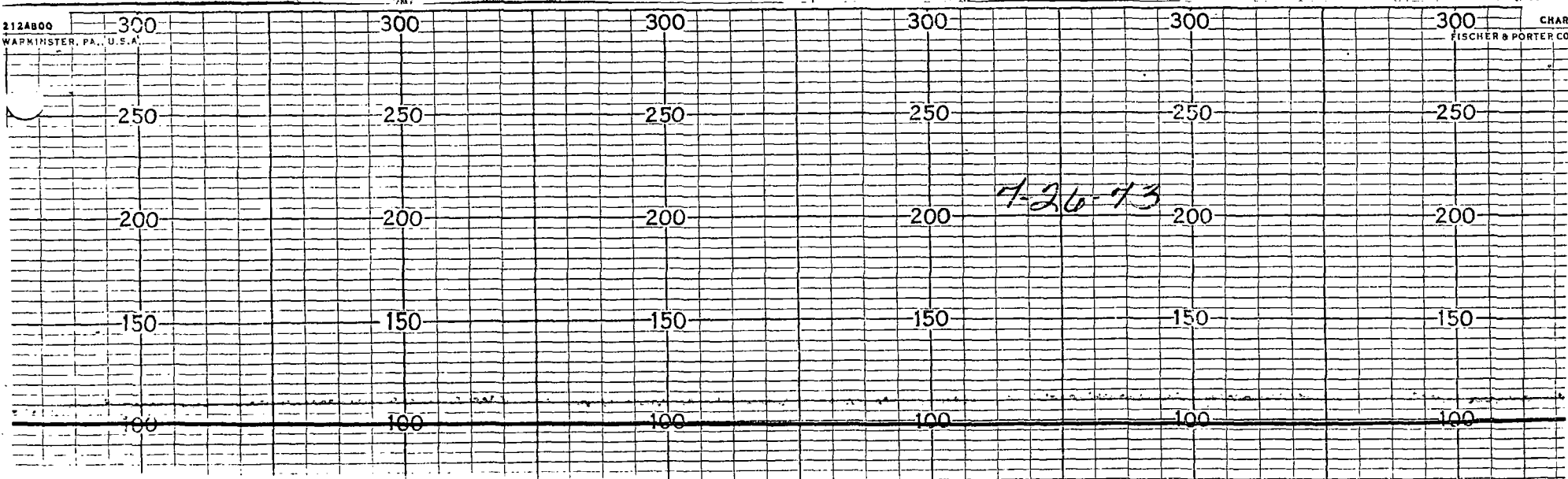
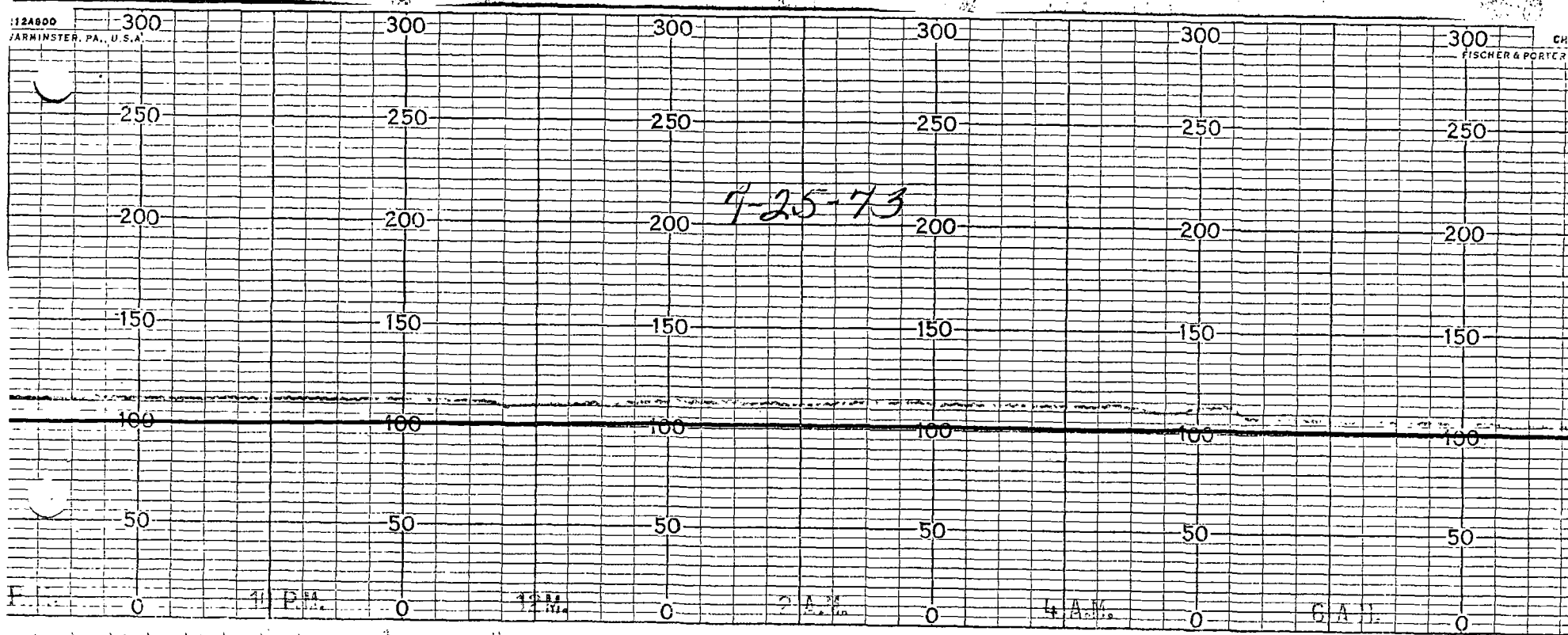
CHAR  
FISCHER & PORTER CO

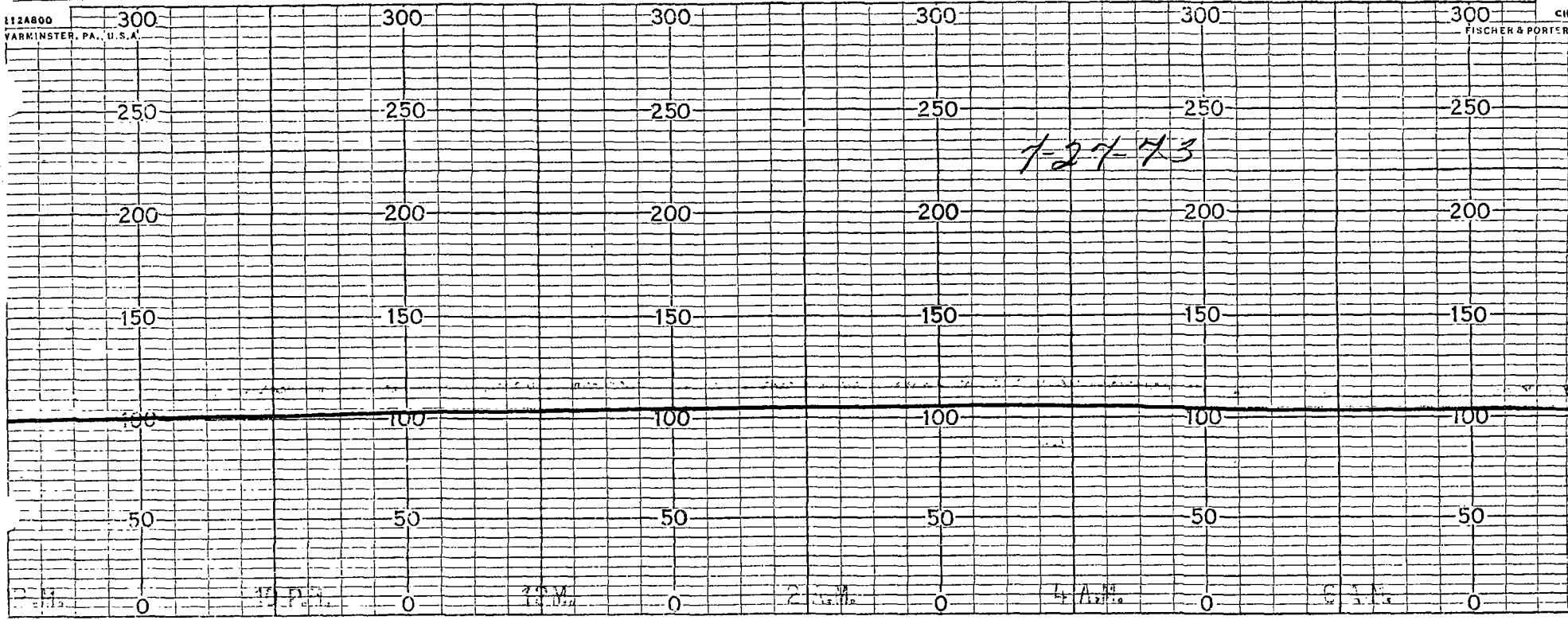


212AB00  
WARMINSTER, PA., U.S.A.

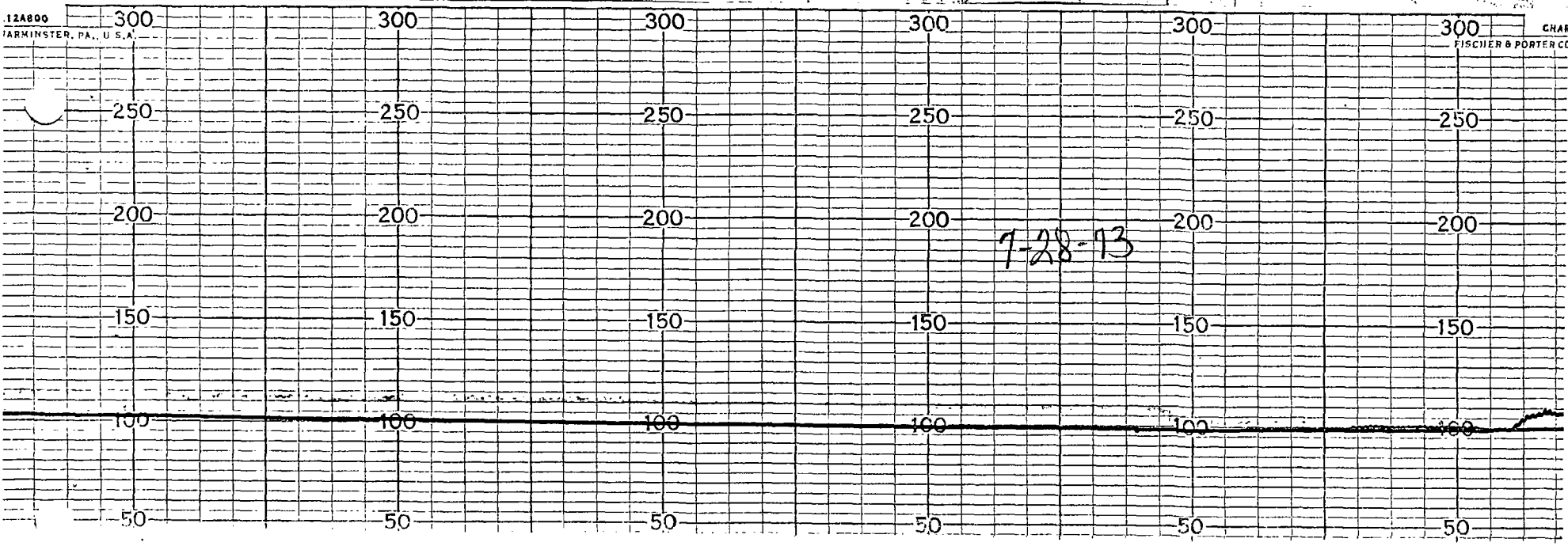
CHAR  
FISCHER & PORTER CO



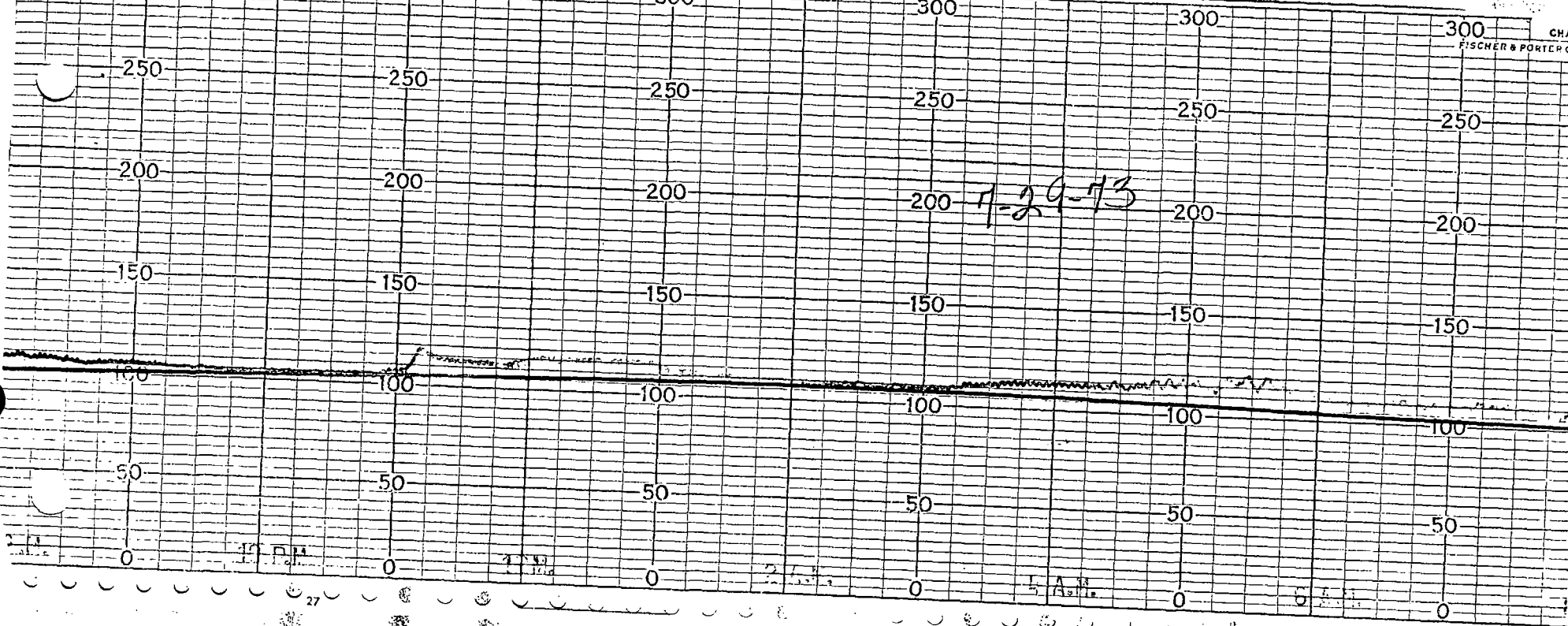




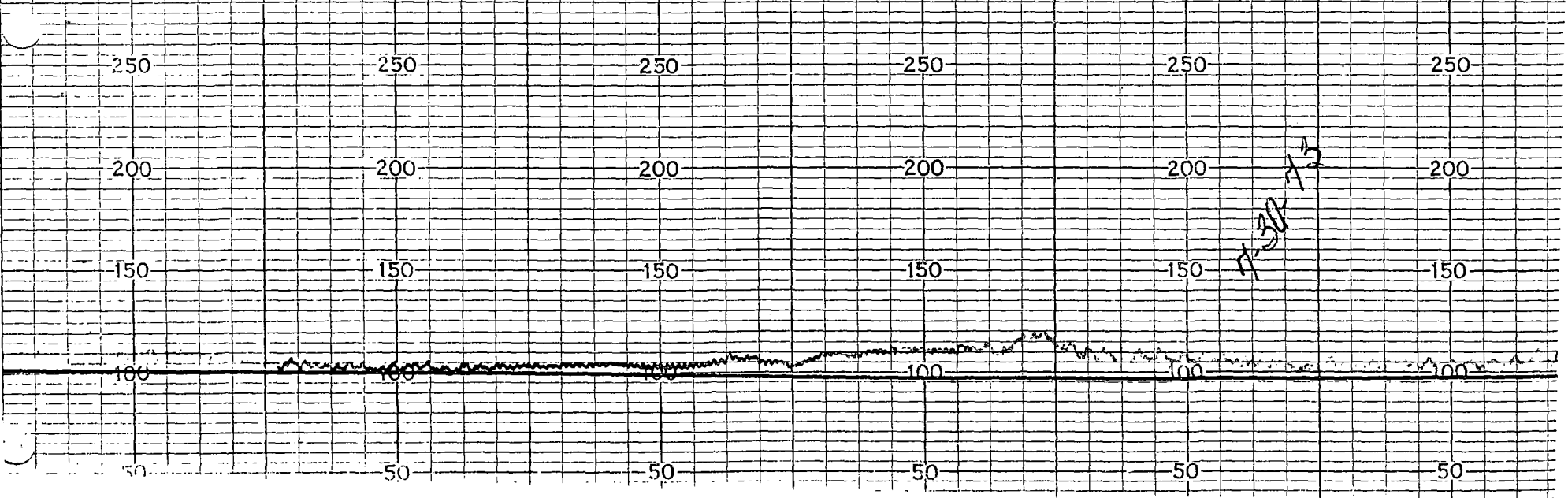
27

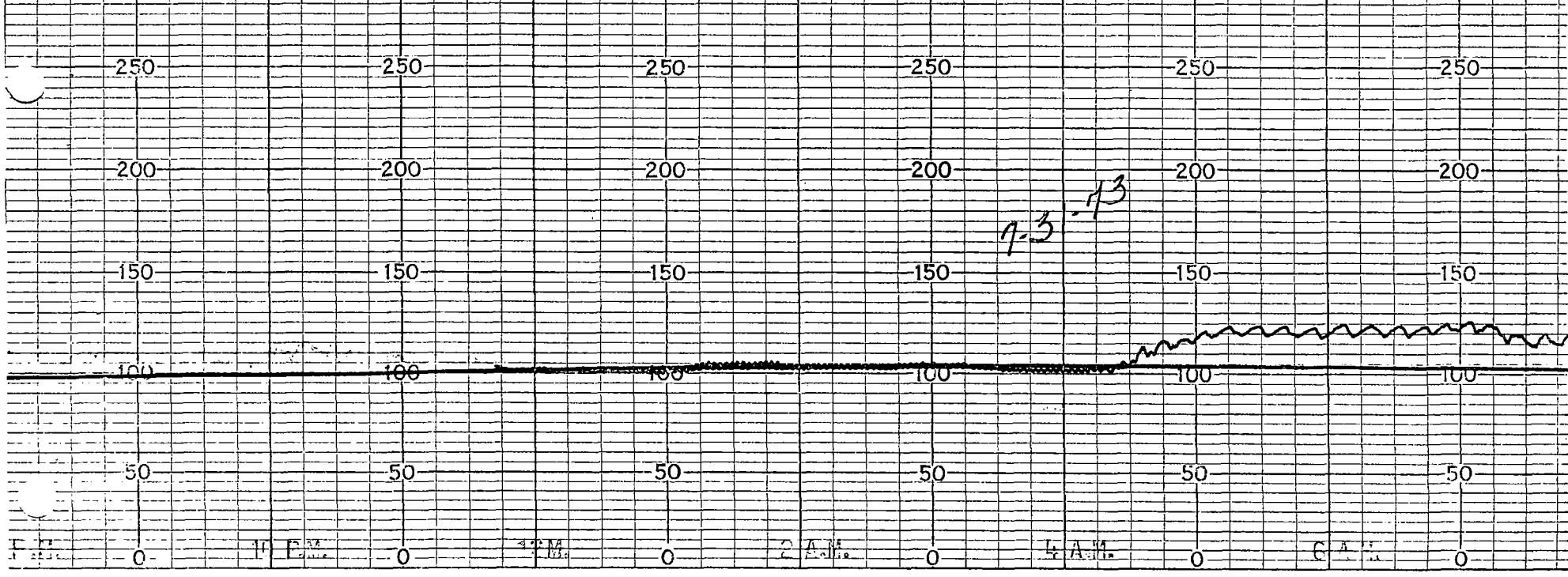


112A800  
WARMINSTER, PA., U.S.A.

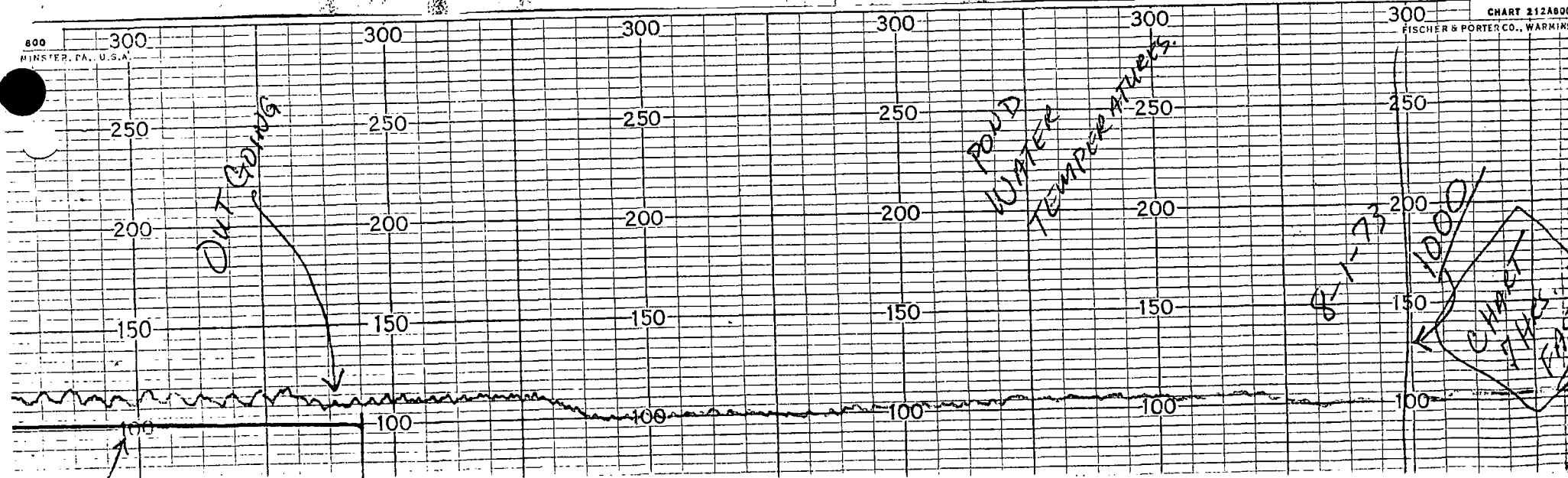


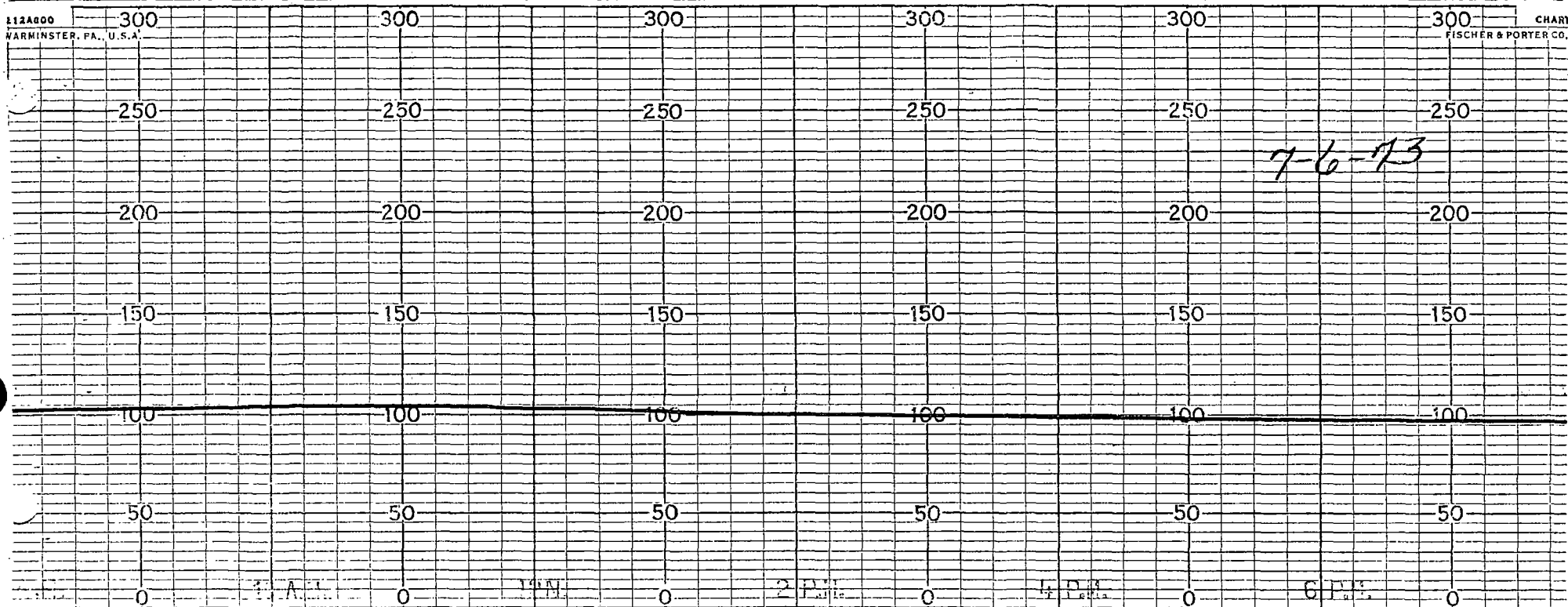
212A800  
WARMINSTER, PA., U.S.A.





27





27

300 300 300 300 300

250 250 250 250 250

200 200 200 200 200

150 150 150 150 150

100 100 100 100 100

50 50 50 50 50

7-5-73

0 0 0 0 0 0 0 0 0 0

12 P.M.

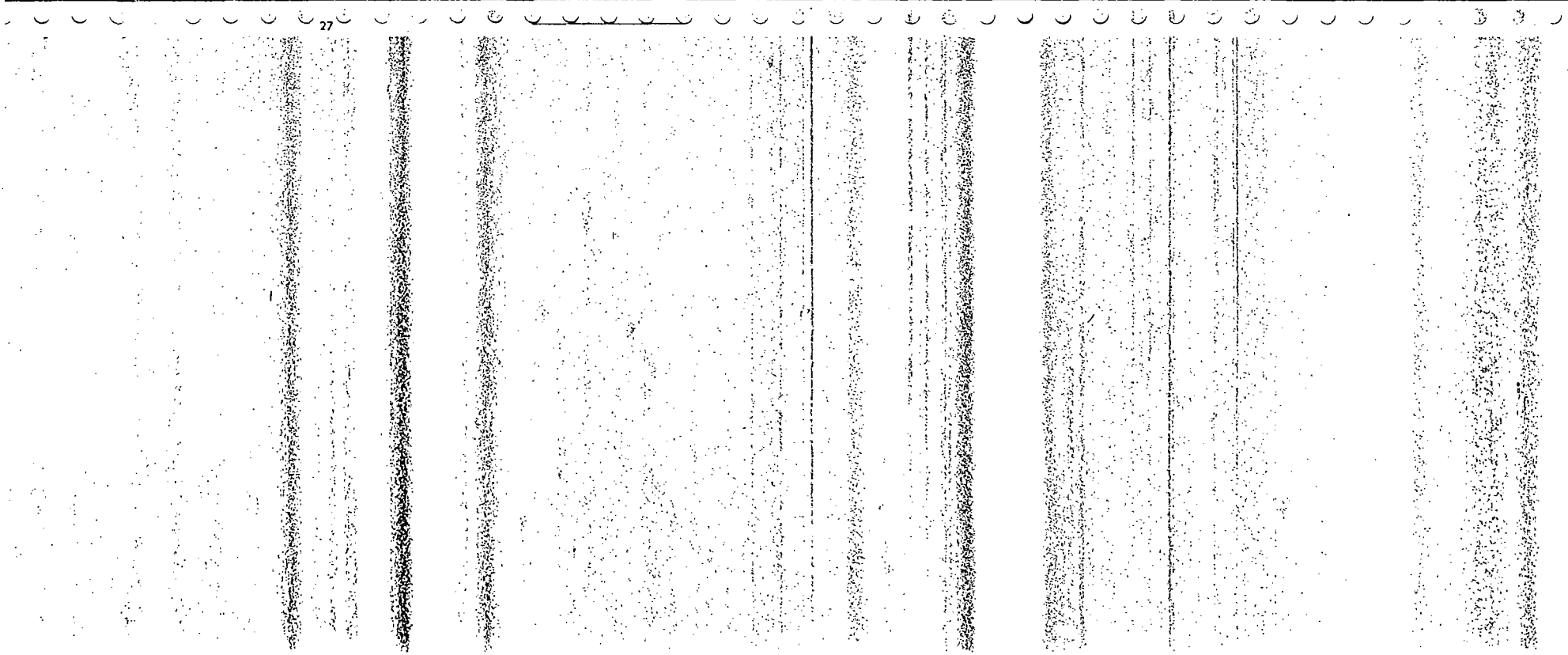
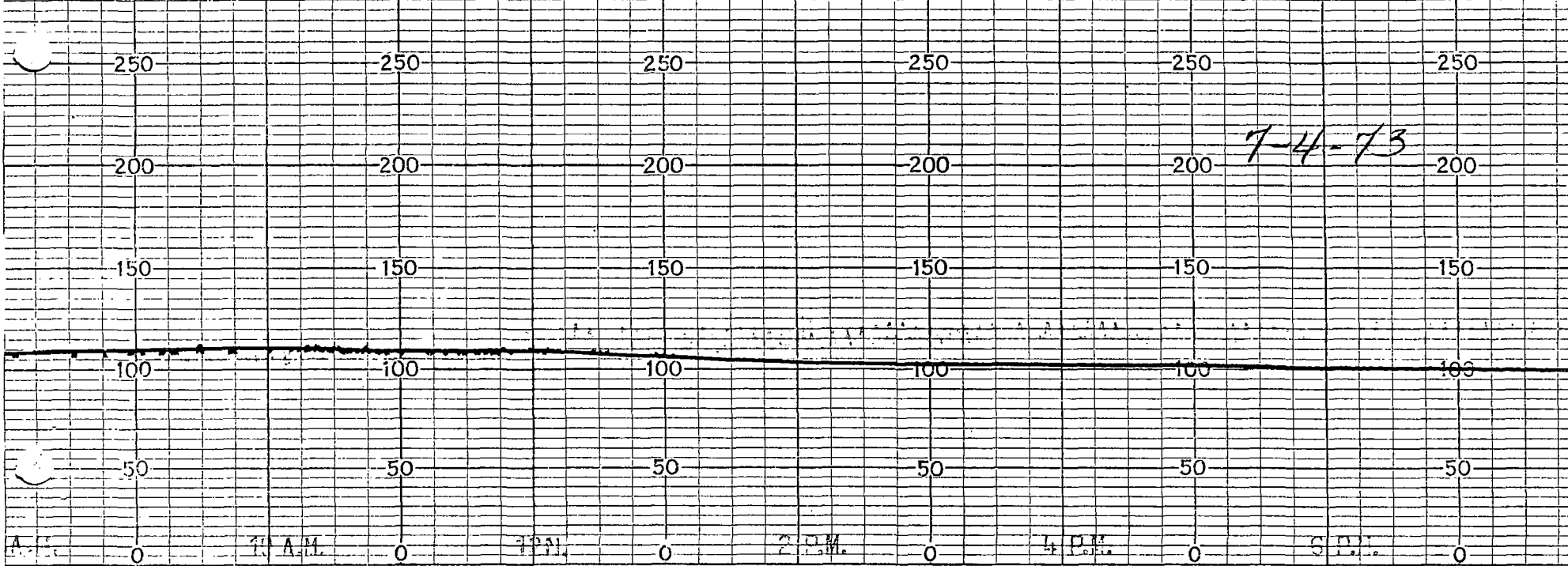
1 P.M.

2 A.M.

4 A.M.

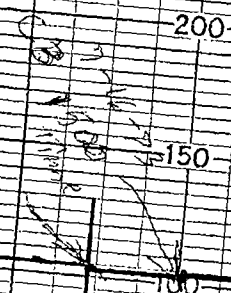
6 A.M.

27





7-1-73



250  
200  
150  
100  
50  
0

250  
200  
150  
100  
50  
0

300  
250  
200  
150  
100  
50  
0

300  
250  
200  
150  
100  
50  
0

300  
250  
200  
150  
100  
50  
0

300  
250  
200  
150  
100  
50  
0

10 P.M.

4 A.M.

2 A.M.

4 A.M.

6 A.M.

27

