

March 30, 2007

Mr. Jeff Koerner, P.E.
Professional Engineer Administrator
Florida Department of Environmental Protection
Division of Air Resource Management
111 South Magnolia Drive, Suite 23
Tallahassee, Florida 32301

RECEIVED

APR 02 2007

BUREAU OF AIR REGULATION

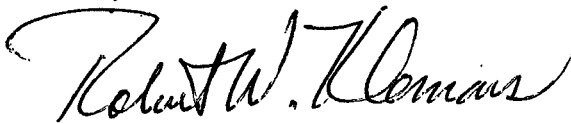
Re: Gainesville Regional Utilities
GRU Energy Center at Shands
Application for Air Construction Permit

Dear Mr. Koerner:

Please find attached four originals of a permit application for construction of air emissions sources for the above referenced project. Also attached is a check for Five Thousand Two-hundred and Fifty Dollars (\$5,250.00) for the application processing fee.

If you have any questions, please contact me by phone at (352) 393-1283, by e-mail at klemansrw@gru.com or at the address at the bottom of this page.

Sincerely,



Robert W. Klemans, P.E.
Interim Environmental Resource Coordinator

RWK

attachments

cc: G. Allen (w/o attach.)
C. Kirts (FDEP/Jax) (w/ attach.)
E. Regan (w/o attach.)
R. Casserleigh (w/o attach.)
C. Heidt (w/ attach.)
✓ T. Davis (ECT) (w/o attach.)
R. Embry (w/o attach.)

file: Shands - CHP

W:\U0070\Klemans\WINWORD\LETTERS\tr to J Koerner trans air constr permit app for Shands CHP.doc

Mr. Chris Kirts, P.E., Administrator
Northeast District Air Program
Florida Department of Environmental Protection
7825 Baymeadows Way, Suite B200
Jacksonville, Florida 32256-7590

RECEIVED

APR 02 2007

BUREAU OF AIR REGULATION

GRU ENERGY CENTER AT SHANDS

**APPLICATION FOR
AIR CONSTRUCTION PERMIT**

Prepared for:



Gainesville, Florida

Prepared by:



Environmental Consulting & Technology, Inc.

3701 Northwest 98th Street
Gainesville, Florida 32606

ECT No. 070145-0100

March 2007

TABLE OF CONTENTS

<u>Section</u>		<u>Page</u>
1.0	INTRODUCTION	1-1
2.0	PROJECT LOCATION AND PROCESS DESCRIPTION	2-1
2.1	<u>PROJECT LOCATION AND PLOT PLAN</u>	2-1
2.2	<u>PROCESS DESCRIPTION</u>	2-1
3.0	APPLICABLE REQUIREMENTS	3-1
3.1	<u>AIR PERMITS REQUIRED</u>	3-1
3.2	<u>NEW SOURCE PERFORMANCE STANDARDS</u>	3-1
3.3	<u>NATIONAL EMISSION STANDARDS FOR HAZARDOUS AIR POLLUTANTS (NESHAPS)</u>	3-4
3.4	<u>FLORIDA EMISSION STANDARDS</u>	3-4

APPENDICES

APPENDIX A—FDEP APPLICATION FOR AIR PERMIT—LONG FORM
APPENDIX B—EMISSION RATE ESTIMATES

LIST OF FIGURES

<u>Figure</u>		<u>Page</u>
2-1	Project Location	2-2
2-2	Site Plan	2-3
2-3	Process Flow Diagram	2-4

1.0 INTRODUCTION

The City of Gainesville, Gainesville Regional Utilities (GRU) plans to install a Combined Heat and Power (CHP) facility adjacent to the Shands at the University of Florida (Shands) hospital complex. The proposed GRU Energy Center at Shands CHP project will include two combustion turbine generators (CTGs), two fired heat recovery steam generators (HRSGs), one auxiliary steam boiler, three small cooling towers, and three emergency diesel-engine driven generators. The CHP project will provide steam and power to the Shands hospital complex, as well as power to the electrical transmission grid. The CTGs and HRSGs will be fired exclusively with pipeline natural gas. The auxiliary boiler will be fired primarily with pipeline natural gas with low sulfur distillate fuel oil serving as a backup fuel source. The emergency generator diesel engines will be fired with low sulfur distillate fuel oil. Engineering of the GRU Energy Center at Shands CHP project is being provided by Burns & McDonnell.

The CHP project will be constructed in two phases. Phase I will include one CTG/HRSG unit, the auxiliary boiler, two emergency diesel generators, and two cooling towers. Phase II will add the second CTG/HRSG unit, the third cooling tower, and the third emergency diesel generator.

The CTGs and HRSGS will be subject to the applicable requirements of New Source Performance Standard (NSPS) Subpart KKKK, Standards of Performance for Stationary Combustion Turbines. The auxiliary boiler will be subject to the applicable requirements of NSPS Subpart Dc, Standards of Performance for Small Industrial-Commercial-Institutional Steam Generating Units. The emergency generator diesel engines will be subject to the applicable requirements of NSPS Subpart IIII, Stationary Compression Ignition Internal Combustion Engines. The CHP project CTGs, HRSGs, auxiliary boiler, and emergency generator diesel engines will comply with these NSPSs.

Potential emissions for the CHP project will be less than 100 tons per year (tpy) of any Clean Air Act regulated pollutant. Accordingly, the CHP project qualifies as a minor source for permitting purposes and will not be subject to either the Prevention of Signifi-

cant Deterioration (PSD) New Source Review (NSR) or the Title V operation permitting programs.

This air construction permit application constitutes GRU's request for Florida Department of Environmental Protection (FDEP) approval to construct and initially operate the GRU Energy Center at Shands CHP project. GRU plans to commence construction of the CHP project upon receipt of an FDEP air construction permit. Completion of construction of Phase I of the CHP project is planned for the second quarter of 2009.

The remainder of this air construction permit application is organized as follows:

- Section 2.0—Project Location and Process Description
- Section 3.0—Applicable Requirements

Appendix A provides FDEP's Application for Air Permit—Long Form (FDEP Form No. 62-210.900[1] Effective 02/02/06). Emission rate estimates, prepared by Burns & McDonnell, are provided in Appendix B.

2.0 PROJECT LOCATION AND PROCESS DESCRIPTION

The location of the proposed GRU Energy Center at Shands CHP project and a process description are provided in the following sections.

2.1 PROJECT LOCATION AND PLOT PLAN

The GRU Energy Center at Shands CHP project will be located east of Southwest 14th Street between Southwest 13th and Southwest 14th Avenues in Gainesville, Alachua County, Florida, adjacent to the Shands hospital complex.

Figure 2-1 shows the site location and nearby prominent geographical features. A site plan of the CHP project is provided in Figure 2-2.

2.2 PROCESS DESCRIPTION

The CHP project will include two natural gas-fired CTGs and HRSGs, one dual-fuel auxiliary steam boiler, three small mechanical draft cooling towers, and three diesel engine-driven emergency generators. A process flow diagram of the CHP process is provided in Figure 2-3.

The CTGs will be fired exclusively with natural gas and will provide power to the Shands hospital complex as well as the electrical transmission grid. In simple cycle mode, the CTG exhaust will discharge directly to the atmosphere. In combined cycle mode, the hot exhaust gases from each CTG will be routed to a HRSG to generate steam. The HRSGs will include natural gas-fired duct burners for supplemental steam generation by the HRSGs. Steam produced by the HRSGs will be routed to the Shands hospital complex. Following the recovery of waste heat by the HRSGs, the CTG exhaust gases will be discharged to the atmosphere. Final selection of the supplier of the CTG/HRSG units has not been made. Based on preliminary design data, it is anticipated that the CTGs will each have a nominal heat input of approximately 40 million British thermal units per hour (MMBtu/hr) and a power generation capacity of approximately 4,600 kilowatts (kW). Each HRSG will produce up to 25,000 pounds per hour of steam and will include a natural gas-fired duct burner with a nominal heat input of 36 MMBtu/hr.

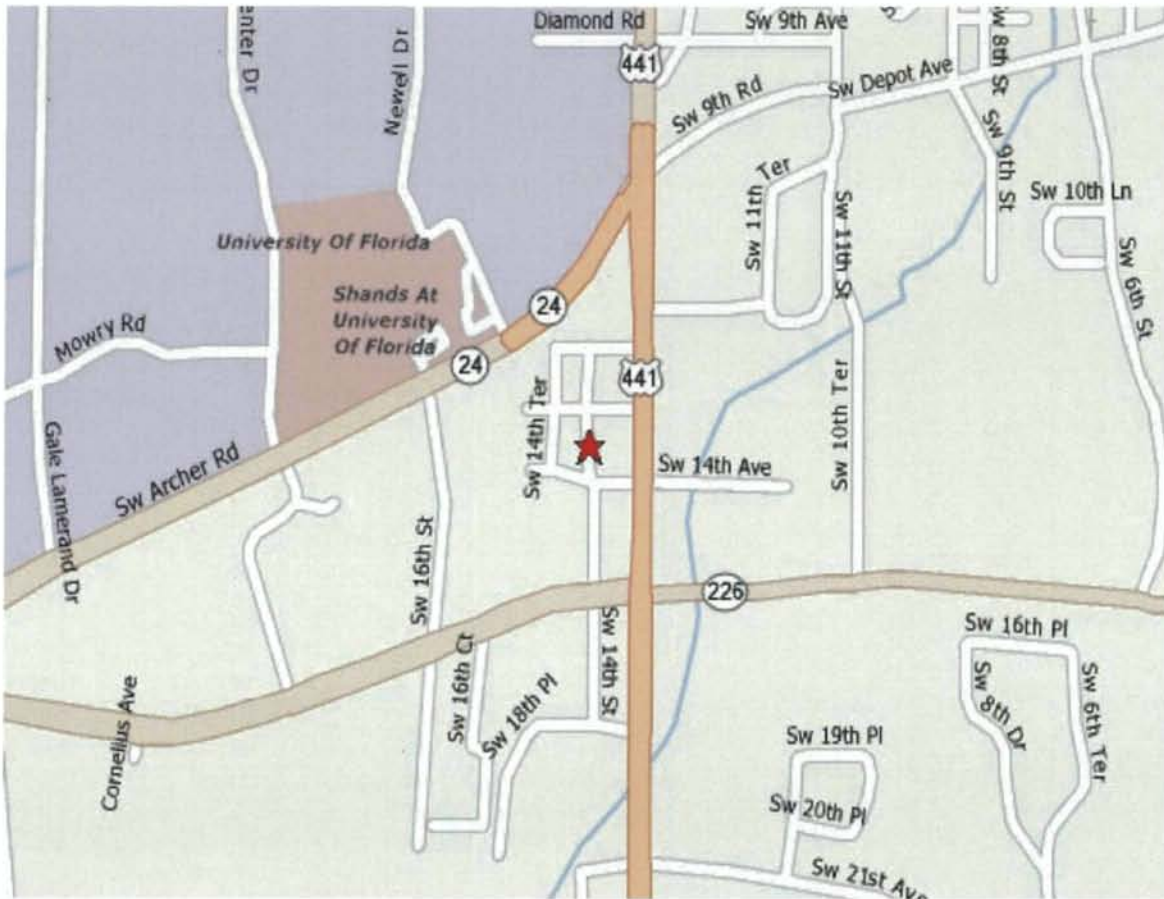


FIGURE 2-1.
LOCATION MAP

Source: ECT, 2007.

ECT
Environmental Consulting & Technology, Inc.

GRU SHANDS - CHP SITE PLAN

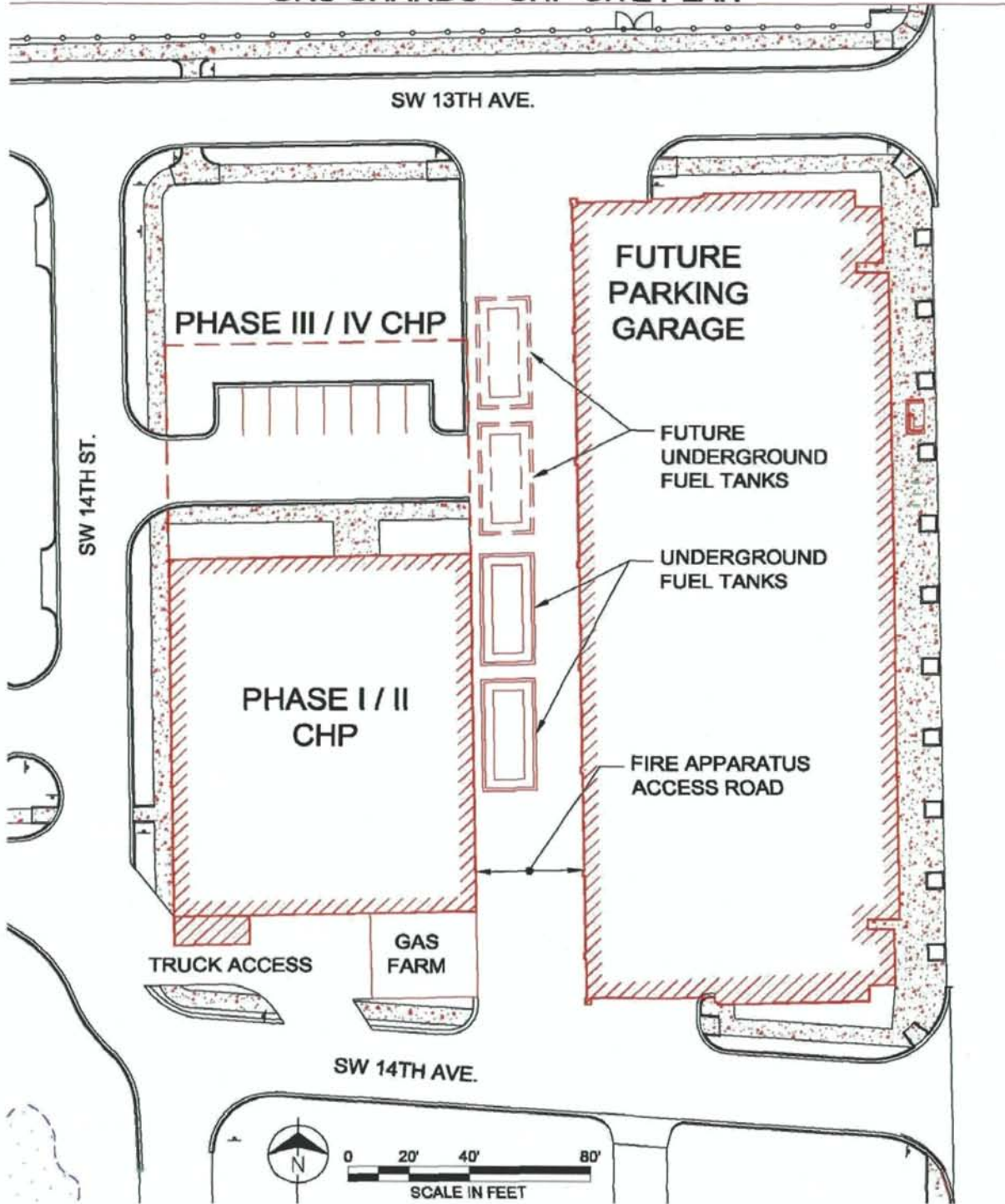


FIGURE 2-2.

GRU ENERGY CENTER AT SHANDS - SITE PLAN

Source: Burns & McDonnell, 2007.

ECT

Environmental Consulting & Technology, Inc.

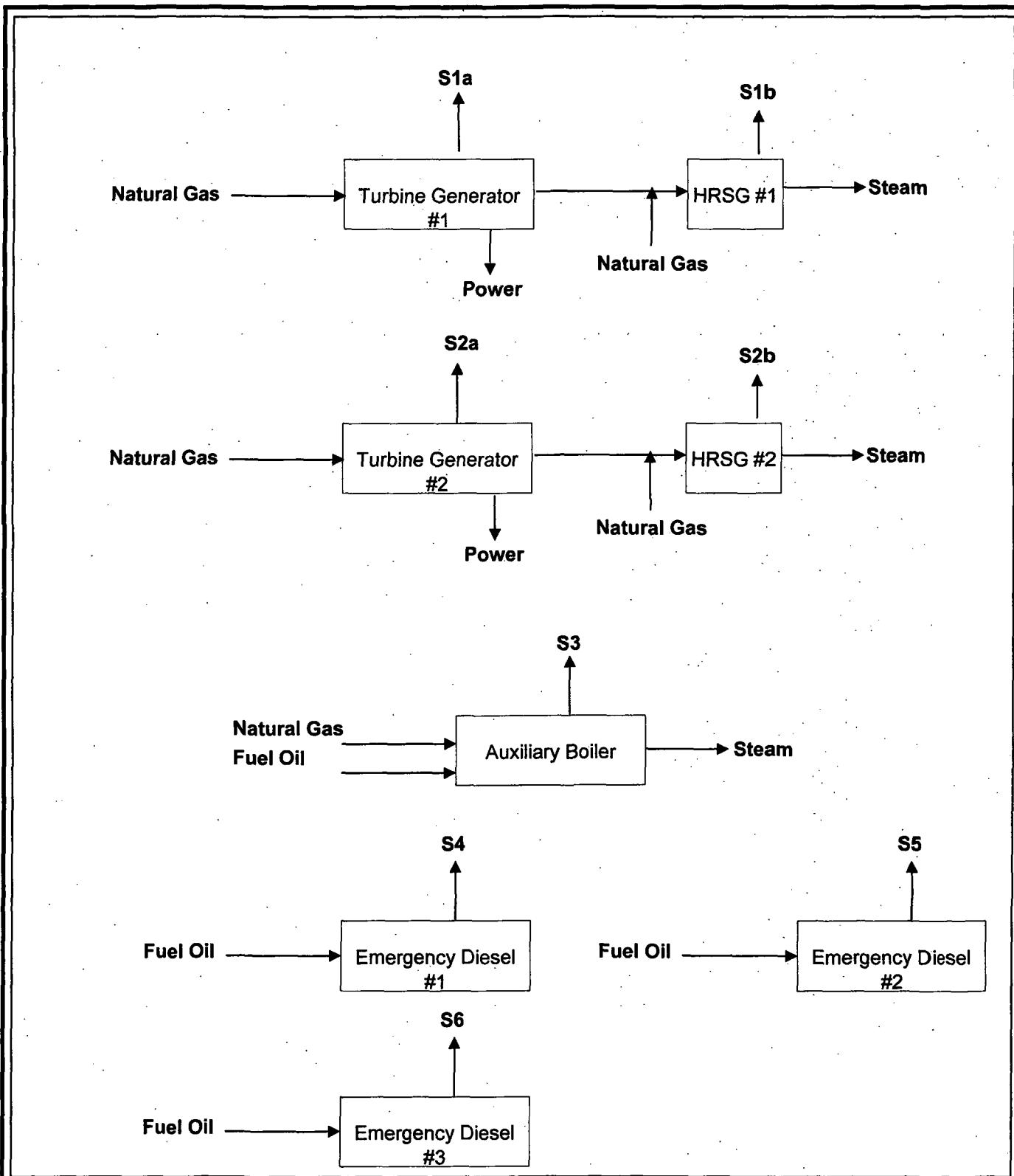


FIGURE 2-3.
PROCESS FLOW DIAGRAM

Source: Burns & McDonnell, 2007.



Ancillary equipment includes an auxiliary boiler, three cooling towers, and three emergency diesel engine-driven generators. The dual fuel (natural gas and low sulfur distillate fuel oil) fired auxiliary boiler will have a heat input rating of approximately 38 MMBtu/hr and will provide additional steam for use by the Shands hospital complex. The three mechanical draft cooling towers will each have a water recirculation rate of 3,600 gallons per minute (gpm), a drift loss efficiency of 0.001 percent, and will provide cooling water for the CHP facility. Two emergency diesel generators will each have a rated capacity of 2,500 kW. The third smaller emergency diesel generator will have a rated capacity of 500 kW. The emergency generators will provide power in the event of outages.

3.0 APPLICABLE REQUIREMENTS

Key air quality related regulatory requirements applicable to the GRU Energy Center at Shands project are described in the following sections.

3.1 AIR PERMITS REQUIRED

Potential emissions for the CHP project will be less than 100 tpy of any Clean Air Act regulated pollutant. Accordingly, the CHP project qualifies as a minor source for permitting purposes and will not be subject to either the PSD NSR or the Title V operation permitting programs.

Operation of the proposed project will result in airborne emissions. Therefore, a permit is required prior to the beginning of facility construction, per Rule 62-212.300(1)(a), Florida Administrative Code (F.A.C.), unless otherwise exempt by FDEP rule. The cooling towers will each have potential particulate emissions of 0.13 tpy and therefore are exempt from permitting pursuant to the generic emissions unit exemption of Rule 62 210.310(3)(b)1., F.A.C.

3.2 NEW SOURCE PERFORMANCE STANDARDS

The CHP project will be subject to NSPS Subpart Dc (for the auxiliary boiler), NSPS Subpart IIII (for the emergency generator diesel engines), and NSPS Subpart KKKK (for the CTGs and HRSGs). Each of these NSPSs is discussed in the following sections.

NSPS Subpart Dc

The auxiliary boiler will have a heat input capacity less than 100 MMBtu/hr but greater than or equal to 10 MMBtu/hr, will meet the definition of a *steam generating unit*, and will commence construction after June 9, 1989. The CHP project auxiliary boiler will therefore be subject to the applicable requirements of NSPS Subpart Dc—Standards of Performance for Small Industrial-Commercial-Institutional Steam Generating Units. NSPS Subpart Dc does not contain any emission standards that are applicable to gas-fired units.

For oil-fired units, NSPS Subpart Dc specifies emission limitations, monitoring, reporting and recordkeeping requirements for opacity, PM and SO₂. Applicable NSPS Subpart Dc emission standards for the CHP project auxiliary boiler when firing oil are summarized as follows:

- Opacity—20 percent opacity (6-minute average), except one 6-minute period per hour of not more than 27 percent opacity for units that have a heat input capacity of 30 MMBtu/hr.
- Particulate Matter (PM)—0.030 lb/MMBtu for units that commence construction after February 28, 2005, and have a heat input capacity of 30 MMBtu/hr. Units that burn oil containing no more than 0.5 weight percent sulfur are not required to conduct emissions monitoring if fuel supplier certifications of the sulfur contents of the fuels burned are maintained.
- Sulfur Dioxide (SO₂)—0.50 lb/MMBtu or combust oil containing no more than 0.5 weight percent sulfur.

The CHP project auxiliary boiler will be fired primarily with pipeline natural gas (with low sulfur [0.05 weight sulfur or less] distillate fuel oil serving as a backup fuel source), and will comply with all of the above emission standards of NSPS Subpart Dc.

NSPS Subpart IIII

NSPS Subpart IIII is applicable to owners and operators of stationary compression ignition (CI) internal combustion engines (ICE) that commence construction after July 11, 2005 where the CI ICE are manufactured after April 1, 2006 (and are not fire pump engines) or manufactured after July 1, 2006 (for certified National Fire Protection Association fire pump engines).

NSPS Subpart IIII specifies emission limitations for NO_x, carbon monoxide (CO), non-methane hydrocarbons (NMHC), and PM. Stationary CI internal combustion engine manufacturers must certify their 2007 model year and later emergency stationary CI ICE with a maximum engine power greater than 2,237 KW (3,000 HP) and a displacement of less than 10 liters per cylinder that are not fire pump engines to the emission standards specified in NSPS Subpart IIII. For 2007 through 2010 model years, the emission stan-

dards in Table 1 to Subpart IIII, for all pollutants, for the same maximum engine power. For engines greater than 750 horsepower (HP), Table 1 emission limits are 1.0 grams per horsepower-hour (g/HP-hr) for hydrocarbons, 6.9 g/HP-hr for NO_x, 8.5 g/HP-hr for CO, and 0.40 g/HP-hr for PM.

The emergency diesel engines installed at the CHP project will comply with the applicable requirements of NSPS Subpart IIII.

NSPS Subpart KKKK

The CHP project CTGs will have a heat input at peak load greater than 10 MMBtu/hr, meets the definition of a *stationary combustion turbine*, and will commence construction after February 18, 2005. The CTGs will therefore be subject to the applicable requirements of NSPS Subpart KKKK – Standards of Performance for Stationary Combustion Turbines.

NSPS Subpart KKKK specifies emission limitations, monitoring, reporting and record-keeping requirements for NO_x and SO₂. Applicable NSPS Subpart KKKK emission standards for the CTGs are summarized as follows:

- SO₂—0.09 pounds per megawatt-hour (lb/MWh) or fuel containing total sulfur emissions greater than 0.060 lb SO₂ per MMBtu heat input.
- Nitrogen Oxides (NO_x)—25 parts per million at 15 percent oxygen (ppm @ 15% O₂) or 1.2 lb/MWh for CTs having a heat input at peak load greater than 50 MMBtu/hr and less than or equal to 850 MMBtu/hr.

Initial and annual performance tests will be required to demonstrate compliance with the NSPS Subpart KKKK NO_x emission standard in accordance with the requirements of §60.4340 and §60.4400.

The CHP CTGs will be fired exclusively with pipeline natural gas and will have SO₂ emissions approximately 10 times lower than the Subpart KKKK limit. The CTGs will be equipped with dry low-NO_x (DLN) combustors that will comply with the Subpart KKKK NO_x standard. For combined cycle CTs, compliance with the Subpart KKKK NO_x stan-

standard is measured at the outlet of the HRSG; i.e., it includes any emissions from the duct burner. For this reason, HRSGs that are associated with combined cycle gas turbines subject to Subpart KKKK are not subject to the requirements of NSPS Subpart Dc, Standards of Performance for Small Industrial-Commercial-Institutional Steam Generating Units pursuant to 40 CFR §60.40c(e).

3.3 NATIONAL EMISSION STANDARDS FOR HAZARDOUS AIR POLLUTANTS (NESHAPS)

The CHP project primary combustion sources (i.e., the CTGs and HRSGs) will be fired exclusively with pipeline natural gas. Combustion of low sulfur distillate fuel oil in the auxiliary boiler and emergency generator diesel engines will be limited to no more than 500 hours per year for each oil-fired combustion source. Accordingly, the CHP project will be a minor source of hazardous air pollutants (HAPs) and therefore not subject to any NESHAPS.

3.4 FLORIDA EMISSION STANDARDS

FDEP emission standards for stationary sources are contained in Chapter 62-296, Stationary Sources—Emission Standards, F.A.C. General pollutant emission limit standards are included in Section 62-296.320, F.A.C. Sections 62-296.401 through 62-296.417, F.A.C. specify emission standards for 17 categories of sources. Sections 62-296.470 and 62-296.480 address CAIR and CAMR requirements, respectively. Sections 62-296.500 through 62-296.570, F.A.C. establish Reasonably Available Control Technology (RACT) requirements for VOC and NO_x emitting facilities. RACT requirements for lead and PM are found in Sections 62-296.600 through 62-296.605, F.A.C., and Sections 62-296.700 through 62-296.712, F.A.C., respectively.

For the CHP project, the general Rule 62-296.320(4)(b) visible emission limitation of 20-percent opacity will apply to all point (i.e., stack) emission sources. Reasonable precautions to prevent unconfined PM emissions will be required pursuant to Rule 62-296.320(4)(c), F.A.C.

Section 62-296.406, Fossil Fuel Steam Generators with Less Than 250 MMBtu/hr Heat Input, will apply to the CHP auxiliary boiler and fired HRSGs. This section contains the following standards for visible emissions, PM, and SO₂:

- Visible Emissions - 20 percent opacity except for either one six-minute period per hour during which opacity shall not exceed 27 percent, or one two-minute period per hour during which opacity shall not exceed 40 percent. The option selected shall be specified in the emissions unit's construction and operation permits.
- PM—Best Available Control Technology.
- SO₂—Best Available Control Technology.

APPENDIX A

FDEP APPLICATION FOR AIR PERMIT—LONG FORM



Department of Environmental Protection

Division of Air Resource Management

APPLICATION FOR AIR PERMIT - LONG FORM

RECEIVED

APR 02 2007

BUREAU OF AIR REGULATION

I. APPLICATION INFORMATION

Air Construction Permit – Use this form to apply for any air construction permit at a facility operating under a federally enforceable state air operation permit (FESOP) or Title V air permit. Also use this form to apply for an air construction permit:

- For a proposed project subject to prevention of significant deterioration (PSD) review, nonattainment area (NAA) new source review, or maximum achievable control technology (MACT) review; or
- Where the applicant proposes to assume a restriction on the potential emissions of one or more pollutants to escape a federal program requirement such as PSD review, NAA new source review, Title V, or MACT; or
- Where the applicant proposes to establish, revise, or renew a plantwide applicability limit (PAL).

Air Operation Permit – Use this form to apply for:

- An initial federally enforceable state air operation permit (FESOP); or
- An initial/revised/renewal Title V air operation permit.

Air Construction Permit & Title V Air Operation Permit (Concurrent Processing Option) – Use this form to apply for both an air construction permit and a revised or renewal Title V air operation permit incorporating the proposed project.

To ensure accuracy, please see form instructions.

Identification of Facility

1. Facility Owner/Company Name: City of Gainesville, GRU	
2. Site Name: GRU Energy Center at Shands	
3. Facility Identification Number:	
4. Facility Location...	
Street Address or Other Locator: SW14th Street between SW13th and SW 14th Avenues	
City: Gainesville	County: Alachua Zip Code: 32608
5. Relocatable Facility? <input type="checkbox"/> Yes <input checked="" type="checkbox"/> No	6. Existing Title V Permitted Facility? <input type="checkbox"/> Yes <input checked="" type="checkbox"/> No

Application Contact

1. Application Contact Name: Robert W. Klemans, P.E.	
2. Application Contact Mailing Address...	
Organization/Firm: City of Gainesville, GRU	
Street Address: P.O. Box 147117 (A136)	
City: Gainesville	State: FL Zip Code: 32614-7117
3. Application Contact Telephone Numbers...	
Telephone: (352) 393-1283	ext. Fax: (352) 334-3151
4. Application Contact Email Address: klemansrw@gru.com	

Application Processing Information (DEP Use)

1. Date of Receipt of Application:	3. PSD Number (if applicable):
2. Project Number(s):	4. Siting Number (if applicable):

APPLICATION INFORMATION

Purpose of Application

This application for air permit is submitted to obtain: (Check one)

Air Construction Permit

- Air construction permit
- Air construction permit to establish, revise, or renew a plantwide applicability limit (PAL).
- Air construction permit to establish, revise, or renew a plantwide applicability limit (PAL), and separate air construction permit to authorize construction or modification of one or more emissions units covered by the PAL.

Air Operation Permit

- Initial Title V air operation permit.
- Title V air operation permit revision.
- Title V air operation permit renewal.
- Initial federally enforceable state air operation permit (FESOP) where professional engineer (PE) certification is required.
- Initial federally enforceable state air operation permit (FESOP) where professional engineer (PE) certification is not required.

Air Construction Permit and Revised/Renewal Title V Air Operation Permit (Concurrent Processing)

- Air construction permit and Title V permit revision, incorporating the proposed project.
- Air construction permit and Title V permit renewal, incorporating the proposed project.

Note: By checking one of the above two boxes, you, the applicant, are requesting concurrent processing pursuant to Rule 62-213.405, F.A.C. In such case, you must also check the following box:

- I hereby request that the department waive the processing time requirements of the air construction permit to accommodate the processing time frames of the Title V air operation permit.

Application Comment

The City of Gainesville, Gainesville Regional Utilities (GRU) plans to install a Combined Heat and Power (CHP) facility adjacent to the Shands at the University of Florida (Shands) hospital complex. The proposed GRU Energy Center at Shands CHP project will include two combustion turbine generators (CTGs), two fired heat recovery steam generators (HRSGs), one auxiliary steam boiler, three small cooling towers, and three emergency diesel generators.

APPLICATION INFORMATION

Scope of Application

Emissions Unit ID Number	Description of Emissions Unit	Air Permit Type	Air Permit Proc. Fee
001	CTG/HRSG Unit No. 1	AC1E	\$1,000
002	CTG/HRSG Unit No. 2	AC1E	\$1,000
003	Auxiliary Boiler	AC1E	\$1,000
004	Emergency Diesel Generator No. 1	AC1E	\$1,000
005	Emergency Diesel Generator No. 2	AC1E	\$1,000
006	Emergency Diesel Generator No. 3	AC1F	\$250


Application Processing Fee

Check one: Attached - Amount: \$ 5,250 Not Applicable

APPLICATION INFORMATION

Owner/Authorized Representative Statement

Complete if applying for an air construction permit or an initial FESOP.

1. Owner/Authorized Representative Name : George K. Allen, Assistant General Manager – Energy Supply
2. Owner/Authorized Representative Mailing Address... Organization/Firm: City of Gainesville, GRU Street Address: P.O. Box 147117 (A132) City: Gainesville State: Florida Zip Code: 32614-7117
3. Owner/Authorized Representative Telephone Numbers... Telephone: (352) 393-1789 ext. Fax: (352) 334-2786
4. Owner/Authorized Representative Email Address: allengk@gru.com
5. Owner/Authorized Representative Statement: <i>I, the undersigned, am the owner or authorized representative of the facility addressed in this air permit application. I hereby certify, based on information and belief formed after reasonable inquiry, that the statements made in this application are true, accurate and complete and that, to the best of my knowledge, any estimates of emissions reported in this application are based upon reasonable techniques for calculating emissions. The air pollutant emissions units and air pollution control equipment described in this application will be operated and maintained so as to comply with all applicable standards for control of air pollutant emissions found in the statutes of the State of Florida and rules of the Department of Environmental Protection and revisions thereof and all other requirements identified in this application to which the facility is subject. I understand that a permit, if granted by the department, cannot be transferred without authorization from the department, and I will promptly notify the department upon sale or legal transfer of the facility or any permitted emissions unit.</i>  Signature _____ Date: <u>3/29/07</u>

APPLICATION INFORMATION

Application Responsible Official Certification N/A

Complete if applying for an initial/revised/renewal Title V permit or concurrent processing of an air construction permit and a revised/renewal Title V permit. If there are multiple responsible officials, the "application responsible official" need not be the "primary responsible official."

1. Application Responsible Official Name:
2. Application Responsible Official Qualification (Check one or more of the following options, as applicable): <input type="checkbox"/> For a corporation, the president, secretary, treasurer, or vice-president of the corporation in charge of a principal business function, or any other person who performs similar policy or decision-making functions for the corporation, or a duly authorized representative of such person if the representative is responsible for the overall operation of one or more manufacturing, production, or operating facilities applying for or subject to a permit under Chapter 62-213, F.A.C. <input type="checkbox"/> For a partnership or sole proprietorship, a general partner or the proprietor, respectively. <input type="checkbox"/> For a municipality, county, state, federal, or other public agency, either a principal executive officer or ranking elected official. <input type="checkbox"/> The designated representative at an Acid Rain source.
3. Application Responsible Official Mailing Address... Organization/Firm: _____ Street Address: _____ <div style="display: flex; justify-content: space-between; margin-top: 5px;"> City: _____ State: _____ Zip Code: _____ </div>
4. Application Responsible Official Telephone Numbers... Telephone: () - _____ ext. Fax: () - _____
5. Application Responsible Official Email Address:
6. Application Responsible Official Certification: <i>I, the undersigned, am a responsible official of the Title V source addressed in this air permit application. I hereby certify, based on information and belief formed after reasonable inquiry, that the statements made in this application are true, accurate and complete and that, to the best of my knowledge, any estimates of emissions reported in this application are based upon reasonable techniques for calculating emissions. The air pollutant emissions units and air pollution control equipment described in this application will be operated and maintained so as to comply with all applicable standards for control of air pollutant emissions found in the statutes of the State of Florida and rules of the Department of Environmental Protection and revisions thereof and all other applicable requirements identified in this application to which the Title V source is subject. I understand that a permit, if granted by the department, cannot be transferred without authorization from the department, and I will promptly notify the department upon sale or legal transfer of the facility or any permitted emissions unit. Finally, I certify that the facility and each emissions unit are in compliance with all applicable requirements to which they are subject, except as identified in compliance plan(s) submitted with this application.</i>
<div style="display: flex; justify-content: space-between; margin-top: 20px;"> _____ Signature _____ Date </div>

APPLICATION INFORMATION

Professional Engineer Certification

1. Professional Engineer Name: **Thomas W. Davis**

Registration Number: **36777**

2. Professional Engineer Mailing Address...

Organization/Firm: **Environmental Consulting & Technology, Inc.**

Street Address: **3701 Northwest 98th Street**

City: **Gainesville**

State: **Florida**

Zip Code: **32606-5004**

3. Professional Engineer Telephone Numbers...

Telephone: **(352) 332-0444** ext. Fax: **(352) 332-6722**

4. Professional Engineer Email Address: **tdavis@ectinc.com**

5. Professional Engineer Statement:

I, the undersigned, hereby certify, except as particularly noted herein, that:*

(1) To the best of my knowledge, there is reasonable assurance that the air pollutant emissions unit(s) and the air pollution control equipment described in this application for air permit, when properly operated and maintained, will comply with all applicable standards for control of air pollutant emissions found in the Florida Statutes and rules of the Department of Environmental Protection; and

(2) To the best of my knowledge, any emission estimates reported or relied on in this application are true, accurate, and complete and are either based upon reasonable techniques available for calculating emissions or, for emission estimates of hazardous air pollutants not regulated for an emissions unit addressed in this application, based solely upon the materials, information and calculations submitted with this application.

(3) If the purpose of this application is to obtain a Title V air operation permit (check here , if so), I further certify that each emissions unit described in this application for air permit, when properly operated and maintained, will comply with the applicable requirements identified in this application to which the unit is subject, except those emissions units for which a compliance plan and schedule is submitted with this application.

(4) If the purpose of this application is to obtain an air construction permit (check here , if so) or concurrently process and obtain an air construction permit and a Title V air operation permit revision or renewal for one or more proposed new or modified emissions units (check here , if so), I further certify that the engineering features of each such emissions unit described in this application have been ~~designed~~ or examined by me or individuals under my direct supervision and found to be in conformity with sound engineering principles applicable to the control of emissions of the air pollutants characterized in this application.

(5) If the purpose of this application is to obtain an initial air operation permit or operation permit revision or renewal for one or more newly constructed or modified emissions units (check here , if so), I further certify that, with the exception of any changes detailed as part of this application, each such emissions unit has been constructed or modified in substantial accordance with the information given in the corresponding application for air construction permit and with all provisions contained in such permit.


Signature

3/29/07
Date

(seal)

* Attach any exception to certification statement.

II. FACILITY INFORMATION

A. GENERAL FACILITY INFORMATION

Facility Location and Type

1. Facility UTM Coordinates... Zone 17 East (km) 370.29 North (km) 3,279.46		2. Facility Latitude/Longitude... Latitude (DD/MM/SS) Longitude (DD/MM/SS)	
3. Governmental Facility Code: 4	4. Facility Status Code: C	5. Facility Major Group SIC Code: 49	6. Facility SIC(s): 4911
7. Facility Comment :			

Facility Contact

1. Facility Contact Name: Gary P. Swanson
2. Facility Contact Mailing Address... Organization/Firm: City of Gainesville, GRU Street Address: P.O. Box 147117 (JK33) City: Gainesville State: Florida Zip Code: 32614-7117
3. Facility Contact Telephone Numbers: Telephone: (352) 393-1706 ext. Fax: (352) 375-2232
4. Facility Contact Email Address: swansongp@gru.com

Facility Primary Responsible Official **N/A**

Complete if an "application responsible official" is identified in Section I. that is not the facility "primary responsible official."

1. Facility Primary Responsible Official Name:
2. Facility Primary Responsible Official Mailing Address... Organization/Firm: Street Address: City: State: Zip Code:
3. Facility Primary Responsible Official Telephone Numbers... Telephone: () - ext. Fax: () -
4. Facility Primary Responsible Official Email Address:

FACILITY INFORMATION

Facility Regulatory Classifications

Check all that would apply *following* completion of all projects and implementation of all other changes proposed in this application for air permit. Refer to instructions to distinguish between a "major source" and a "synthetic minor source."

1.	<input type="checkbox"/> Small Business Stationary Source	<input type="checkbox"/> Unknown
2.	<input type="checkbox"/> Synthetic Non-Title V Source	
3.	<input type="checkbox"/> Title V Source	
4.	<input type="checkbox"/> Major Source of Air Pollutants, Other than Hazardous Air Pollutants (HAPs)	
5.	<input checked="" type="checkbox"/> Synthetic Minor Source of Air Pollutants, Other than HAPs	
6.	<input type="checkbox"/> Major Source of Hazardous Air Pollutants (HAPs)	
7.	<input type="checkbox"/> Synthetic Minor Source of HAPs	
8.	<input checked="" type="checkbox"/> One or More Emissions Units Subject to NSPS (40 CFR Part 60)	
9.	<input type="checkbox"/> One or More Emissions Units Subject to Emission Guidelines (40 CFR Part 60)	
10.	<input type="checkbox"/> One or More Emissions Units Subject to NESHAP (40 CFR Part 61 or Part 63)	
11.	<input type="checkbox"/> Title V Source Solely by EPA Designation (40 CFR 70.3(a)(5))	
12.	Facility Regulatory Classifications Comment:	

FACILITY INFORMATION

List of Pollutants Emitted by Facility

1. Pollutant Emitted	2. Pollutant Classification	3. Emissions Cap [Y or N]?
NOX	SM	N
SO2	B	N
CO	B	N
PM	B	N
VOC	B	N

FACILITY INFORMATION

B. EMISSIONS CAPS

Facility-Wide or Multi-Unit Emissions Caps N/A

1. Pollutant Subject to Emissions Cap	2. Facility Wide Cap [Y or N]? (all units)	3. Emissions Unit ID No.s Under Cap (if not all units)	4. Hourly Cap (lb/hr)	5. Annual Cap (ton/yr)	6. Basis for Emissions Cap

7. Facility-Wide or Multi-Unit Emissions Cap Comment:

FACILITY INFORMATION

C. FACILITY ADDITIONAL INFORMATION

Additional Requirements for All Applications, Except as Otherwise Stated

1. Facility Plot Plan: (Required for all permit applications, except Title V air operation permit revision applications if this information was submitted to the department within the previous five years and would not be altered as a result of the revision being sought) <input checked="" type="checkbox"/> Attached, Document ID: Figure 2-2 <input type="checkbox"/> Previously Submitted, Date:
2. Process Flow Diagram(s): (Required for all permit applications, except Title V air operation permit revision applications if this information was submitted to the department within the previous five years and would not be altered as a result of the revision being sought) <input checked="" type="checkbox"/> Attached, Document ID: Figure 2-3 <input type="checkbox"/> Previously Submitted, Date:
3. Precautions to Prevent Emissions of Unconfined Particulate Matter: (Required for all permit applications, except Title V air operation permit revision applications if this information was submitted to the department within the previous five years and would not be altered as a result of the revision being sought) <input checked="" type="checkbox"/> Attached, Document ID: Attachment 1 <input type="checkbox"/> Previously Submitted, Date:

Additional Requirements for Air Construction Permit Applications

1. Area Map Showing Facility Location: <input checked="" type="checkbox"/> Attached, Document ID: Figure 2-1 <input type="checkbox"/> Not Applicable (existing permitted facility)
2. Description of Proposed Construction, Modification, or Plantwide Applicability Limit (PAL): <input checked="" type="checkbox"/> Attached, Document ID: Section 2.0
3. Rule Applicability Analysis: <input checked="" type="checkbox"/> Attached, Document ID: Section 3.0
4. List of Exempt Emissions Units (Rule 62-210.300(3), F.A.C.): <input checked="" type="checkbox"/> Attached, Document ID: Section 3.1 <input type="checkbox"/> Not Applicable (no exempt units at facility)
5. Fugitive Emissions Identification: <input type="checkbox"/> Attached, Document ID: _____ <input checked="" type="checkbox"/> Not Applicable
6. Air Quality Analysis (Rule 62-212.400(7), F.A.C.): <input type="checkbox"/> Attached, Document ID: _____ <input checked="" type="checkbox"/> Not Applicable
7. Source Impact Analysis (Rule 62-212.400(5), F.A.C.): <input type="checkbox"/> Attached, Document ID: _____ <input checked="" type="checkbox"/> Not Applicable
8. Air Quality Impact since 1977 (Rule 62-212.400(4)(e), F.A.C.): <input type="checkbox"/> Attached, Document ID: _____ <input checked="" type="checkbox"/> Not Applicable
9. Additional Impact Analyses (Rules 62-212.400(8) and 62-212.500(4)(e), F.A.C.): <input type="checkbox"/> Attached, Document ID: _____ <input checked="" type="checkbox"/> Not Applicable
10. Alternative Analysis Requirement (Rule 62-212.500(4)(g), F.A.C.): <input type="checkbox"/> Attached, Document ID: _____ <input checked="" type="checkbox"/> Not Applicable

FACILITY INFORMATION

Additional Requirements for FESOP Applications N/A

1. List of Exempt Emissions Units (Rule 62-210.300(3)(a) or (b)1., F.A.C.):
 Attached, Document ID: _____ Not Applicable (no exempt units at facility)

Additional Requirements for Title V Air Operation Permit Applications N/A

1. List of Insignificant Activities (Required for initial/renewal applications only):
 Attached, Document ID: _____ Not Applicable (revision application)

2. Identification of Applicable Requirements (Required for initial/renewal applications, and for revision applications if this information would be changed as a result of the revision being sought):
 Attached, Document ID: _____
 Not Applicable (revision application with no change in applicable requirements)

3. Compliance Report and Plan (Required for all initial/revision/renewal applications):
 Attached, Document ID: _____
Note: A compliance plan must be submitted for each emissions unit that is not in compliance with all applicable requirements at the time of application and/or at any time during application processing. The department must be notified of any changes in compliance status during application processing.

4. List of Equipment/Activities Regulated under Title VI (If applicable, required for initial/renewal applications only):
 Attached, Document ID: _____
 Equipment/Activities On site but Not Required to be Individually Listed
 Not Applicable

5. Verification of Risk Management Plan Submission to EPA (If applicable, required for initial/renewal applications only) :
 Attached, Document ID: _____ Not Applicable

6. Requested Changes to Current Title V Air Operation Permit:
 Attached, Document ID: _____ Not Applicable

Additional Requirements Comment

[Empty box for additional requirements comment]

EMISSIONS UNIT INFORMATION

Section [1] of [6]

A. GENERAL EMISSIONS UNIT INFORMATION

Title V Air Operation Permit Emissions Unit Classification

1. Regulated or Unregulated Emissions Unit? (Check one, if applying for an initial, revised or renewal Title V air operation permit. Skip this item if applying for an air construction permit or FESOP only.)

- The emissions unit addressed in this Emissions Unit Information Section is a regulated emissions unit.
- The emissions unit addressed in this Emissions Unit Information Section is an unregulated emissions unit.

Emissions Unit Description and Status

1. Type of Emissions Unit Addressed in this Section: (Check one)

- This Emissions Unit Information Section addresses, as a single emissions unit, a single process or production unit, or activity, which produces one or more air pollutants and which has at least one definable emission point (stack or vent).
- This Emissions Unit Information Section addresses, as a single emissions unit, a group of process or production units and activities which has at least one definable emission point (stack or vent) but may also produce fugitive emissions.
- This Emissions Unit Information Section addresses, as a single emissions unit, one or more process or production units and activities which produce fugitive emissions only.

2. Description of Emissions Unit Addressed in this Section:

Combustion Turbine Generator (CTG) Heat Recovery Steam Generator (HRSG) Unit No. 1

3. Emissions Unit Identification Number: **001 (CTG/HRSG No. 1)**

4. Emissions Unit Status Code: C	5. Commence Construction Date: N/A	6. Initial Startup Date: N/A	7. Emissions Unit Major Group SIC Code: 49	8. Acid Rain Unit? <input type="checkbox"/> Yes <input checked="" type="checkbox"/> No
--	--	--	--	--

9. Package Unit:

Manufacturer:

Model Number:

10. Generator Nameplate Rating: **4.6 MW**

11. Emissions Unit Comment:

EMISSIONS UNIT INFORMATION

Section [1] of [6]

Emissions Unit Control Equipment

1. Control Equipment/Method(s) Description:

Low NOx Burners

2. Control Device or Method Code(s): **205**

EMISSIONS UNIT INFORMATION

Section [1] of [6]

B. EMISSIONS UNIT CAPACITY INFORMATION

(Optional for unregulated emissions units.)

Emissions Unit Operating Capacity and Schedule

1. Maximum Process or Throughput Rate:
2. Maximum Production Rate:
3. Maximum Heat Input Rate: 76.1 million Btu/hr
4. Maximum Incineration Rate: pounds/hr tons/day
5. Requested Maximum Operating Schedule: 24 hours/day 52 weeks/year 7 days/week 8,760 hours/year
6. Operating Capacity/Schedule Comment: Field 3 maximum heat input rate is the total for the CTG (40.1 MMBtu/hr) and HRSG duct burner (36 MMBtu/hr).

EMISSIONS UNIT INFORMATION

Section [1] of [6]

C. EMISSION POINT (STACK/VENT) INFORMATION
 (Optional for unregulated emissions units.)

Emission Point Description and Type

1. Identification of Point on Plot Plan or Flow Diagram: S1a and S1b		2. Emission Point Type Code: 3
3. Descriptions of Emission Points Comprising this Emissions Unit for VE Tracking: CTG (SIMPLE CYCLE MODE) STACK - S1a CTG/HRSG (COMBINED CYCLE MODE) STACK - S1b		
4. ID Numbers or Descriptions of Emission Units with this Emission Point in Common: N/A		
5. Discharge Type Code: V	6. Stack Height: 110 feet (S1a & S1b)	7. Exit Diameter: 3.5 feet (S1a & S1b)
8. Exit Temperature: 710 °F (S1a) 280 °F (S1a)	9. Actual Volumetric Flow Rate: 30,000 acfm (S1a) 62,000 acfm (S1b)	10. Water Vapor: N/A %
11. Maximum Dry Standard Flow Rate: N/A dscfm		12. Nonstack Emission Point Height: N/A feet
13. Emission Point UTM Coordinates... Zone: East (km): North (km):		14. Emission Point Latitude/Longitude... Latitude (DD/MM/SS) Longitude (DD/MM/SS)
15. Emission Point Comment:		

EMISSIONS UNIT INFORMATION

Section [1] of [6]

D. SEGMENT (PROCESS/FUEL) INFORMATION**Segment Description and Rate: Segment 1 of 2**

1. Segment Description (Process/Fuel Type): Combustion turbine fired with pipeline natural gas		
2. Source Classification Code (SCC): 2-01-002-01		3. SCC Units: Million Cubic Feet Burned
4. Maximum Hourly Rate: 0.038	5. Maximum Annual Rate: 334.55	6. Estimated Annual Activity Factor:
7. Maximum % Sulfur: N/A	8. Maximum % Ash: N/A	9. Million Btu per SCC Unit: 1,050
10. Segment Comment:		

Segment Description and Rate: Segment 2 of 2

1. Segment Description (Process/Fuel Type): Heat recovery steam generator duct burner fired with pipeline natural gas		
2. Source Classification Code (SCC): 2-01-002-01		3. SCC Units: Million Cubic Feet Burned
4. Maximum Hourly Rate: 0.0343	5. Maximum Annual Rate: 300.34	6. Estimated Annual Activity Factor:
7. Maximum % Sulfur: N/A	8. Maximum % Ash: N/A	9. Million Btu per SCC Unit: 1,050
10. Segment Comment:		

EMISSIONS UNIT INFORMATION

Section [1] of [6]

E. EMISSIONS UNIT POLLUTANTS

List of Pollutants Emitted by Emissions Unit

1. Pollutant Emitted	2. Primary Control Device Code	3. Secondary Control Device Code	4. Pollutant Regulatory Code
NOX	205		EL
SO2			EL
PM/PM10			NS
CO			NS

**F1. EMISSIONS UNIT POLLUTANT DETAIL INFORMATION –
POTENTIAL, FUGITIVE, AND ACTUAL EMISSIONS**

(Optional for unregulated emissions units.)

Potential, Estimated Fugitive, and Baseline & Projected Actual Emissions

Complete for each pollutant identified in Subsection E if applying for an air construction permit or concurrent processing of an air construction permit and a revised or renewal Title V permit. Complete for each emissions-limited pollutant identified in Subsection E if applying for an air operation permit.

1. Pollutant Emitted: NOX		2. Total Percent Efficiency of Control:	
3. Potential Emissions: 6.9 lb/hour 30.1 tons/year		4. Synthetically Limited? <input type="checkbox"/> Yes <input checked="" type="checkbox"/> No	
5. Range of Estimated Fugitive Emissions (as applicable): N/A to tons/year			
6. Emission Factor: 0.074 lb/MMBtu (CTG) 0.11 lb/MMBtu (HRSG DB) Reference: Vendor Data		7. Emissions Method Code: 5	
8.a. Baseline Actual Emissions (if required): tons/year		8.b. Baseline 24-month Period: From: To:	
9.a. Projected Actual Emissions (if required): tons/year		9.b. Projected Monitoring Period: <input type="checkbox"/> 5 years <input type="checkbox"/> 10 years	
10. Calculation of Emissions: See Appendix B			
11. Potential, Fugitive, and Actual Emissions Comment: Potential emissions are for the CTG/HRSG in combined cycle mode.			

**F2. EMISSIONS UNIT POLLUTANT DETAIL INFORMATION -
ALLOWABLE EMISSIONS**

Complete if the pollutant identified in Subsection F1 is or would be subject to a numerical emissions limitation.

Allowable Emissions Allowable Emissions 1 of 2

1. Basis for Allowable Emissions Code: ESCPSD	2. Future Effective Date of Allowable Emissions: N/A
3. Allowable Emissions and Units: N/A	4. Equivalent Allowable Emissions: 6.9 lb/hour 30.1 tons/year
5. Method of Compliance: Annual stack test using EPA Reference Methods 7, 7A, 7C, 7D, or 7E and monitoring of annual operating hours.	
6. Allowable Emissions Comment (Description of Operating Method):	

Allowable Emissions Allowable Emissions 2 of 2

1. Basis for Allowable Emissions Code: RULE	2. Future Effective Date of Allowable Emissions: N/A
3. Allowable Emissions and Units: 25 ppm @ 15% O₂	4. Equivalent Allowable Emissions: N/A lb/hour N/A tons/year
5. Method of Compliance: Annual stack test using EPA Reference Methods 7, 7A, 7C, 7D, or 7E	
6. Allowable Emissions Comment (Description of Operating Method): 40 CFR Part 60, Subpart KKKK	

Allowable Emissions Allowable Emissions of

1. Basis for Allowable Emissions Code:	2. Future Effective Date of Allowable Emissions:
3. Allowable Emissions and Units:	4. Equivalent Allowable Emissions: lb/hour tons/year
5. Method of Compliance:	
6. Allowable Emissions Comment (Description of Operating Method):	

**F1. EMISSIONS UNIT POLLUTANT DETAIL INFORMATION –
POTENTIAL, FUGITIVE, AND ACTUAL EMISSIONS**

(Optional for unregulated emissions units.)

Potential, Estimated Fugitive, and Baseline & Projected Actual Emissions

Complete for each pollutant identified in Subsection E if applying for an air construction permit or concurrent processing of an air construction permit and a revised or renewal Title V permit. Complete for each emissions-limited pollutant identified in Subsection E if applying for an air operation permit.

1. Pollutant Emitted: SO2		2. Total Percent Efficiency of Control:	
3. Potential Emissions: 0.4 lb/hour 1.8 tons/year		4. Synthetically Limited? <input type="checkbox"/> Yes <input checked="" type="checkbox"/> No	
5. Range of Estimated Fugitive Emissions (as applicable): N/A to tons/year			
6. Emission Factor: 0.0054 lb/MMBtu Reference: 2.0 grains S / 100 scf natural gas		7. Emissions Method Code: 5	
8.a. Baseline Actual Emissions (if required): tons/year		8.b. Baseline 24-month Period: From: To:	
9.a. Projected Actual Emissions (if required): tons/year		9.b. Projected Monitoring Period: <input type="checkbox"/> 5 years <input type="checkbox"/> 10 years	
10. Calculation of Emissions: See Appendix B			
11. Potential, Fugitive, and Actual Emissions Comment: Potential emissions are for the CTG/HRSG in combined cycle mode.			

F2. EMISSIONS UNIT POLLUTANT DETAIL INFORMATION -
ALLOWABLE EMISSIONS

Complete if the pollutant identified in Subsection F1 is or would be subject to a numerical emissions limitation.

Allowable Emissions Allowable Emissions 1 of 1

1. Basis for Allowable Emissions Code: RULE	2. Future Effective Date of Allowable Emissions: N/A
3. Allowable Emissions and Units: 0.060 lb SO₂/MMBtu fuel sulfur limit	4. Equivalent Allowable Emissions: 4.6 lb/hour 20.0 tons/year
5. Method of Compliance: Fuel monitoring per NSPS Subpart KKKK	
6. Allowable Emissions Comment (Description of Operating Method): 40 CFR Part 60, Subpart KKKK	

Allowable Emissions Allowable Emissions of

1. Basis for Allowable Emissions Code:	2. Future Effective Date of Allowable Emissions:
3. Allowable Emissions and Units:	4. Equivalent Allowable Emissions: lb/hour tons/year
5. Method of Compliance:	
6. Allowable Emissions Comment (Description of Operating Method):	

Allowable Emissions Allowable Emissions of

1. Basis for Allowable Emissions Code:	2. Future Effective Date of Allowable Emissions:
3. Allowable Emissions and Units:	4. Equivalent Allowable Emissions: lb/hour tons/year
5. Method of Compliance:	
6. Allowable Emissions Comment (Description of Operating Method):	

**F1. EMISSIONS UNIT POLLUTANT DETAIL INFORMATION -
POTENTIAL, FUGITIVE, AND ACTUAL EMISSIONS**

(Optional for unregulated emissions units.)

Potential, Estimated Fugitive, and Baseline & Projected Actual Emissions

Complete for each pollutant identified in Subsection E if applying for an air construction permit or concurrent processing of an air construction permit and a revised or renewal Title V permit. Complete for each emissions-limited pollutant identified in Subsection E if applying for an air operation permit.

1. Pollutant Emitted: PM/PM10		2. Total Percent Efficiency of Control:	
3. Potential Emissions: 2.6 lb/hour 11.2 tons/year		4. Synthetically Limited? <input type="checkbox"/> Yes <input checked="" type="checkbox"/> No	
5. Range of Estimated Fugitive Emissions (as applicable): N/A to tons/year			
6. Emission Factor: 0.057 lb/MMBtu (CTG) 0.01 lb/MMBtu (HRSG DB) Reference: Vendor Data (CTG), AP-42 (HRSG DB)		7. Emissions Method Code: 5 (CT), 3 (HRSG DB)	
8.a. Baseline Actual Emissions (if required): tons/year		8.b. Baseline 24-month Period: From: To:	
9.a. Projected Actual Emissions (if required): tons/year		9.b. Projected Monitoring Period: <input type="checkbox"/> 5 years <input type="checkbox"/> 10 years	
10. Calculation of Emissions: See Appendix B			
11. Potential, Fugitive, and Actual Emissions Comment: Potential emissions are for the CTG/HRSG in combined cycle mode.			

**F2. EMISSIONS UNIT POLLUTANT DETAIL INFORMATION -
ALLOWABLE EMISSIONS**

Complete if the pollutant identified in Subsection F1 is or would be subject to a numerical emissions limitation.

Allowable Emissions Allowable Emissions of N/A

1. Basis for Allowable Emissions Code:	2. Future Effective Date of Allowable Emissions:
3. Allowable Emissions and Units:	4. Equivalent Allowable Emissions: lb/hour tons/year
5. Method of Compliance:	
6. Allowable Emissions Comment (Description of Operating Method):	

Allowable Emissions Allowable Emissions of

1. Basis for Allowable Emissions Code:	2. Future Effective Date of Allowable Emissions:
3. Allowable Emissions and Units:	4. Equivalent Allowable Emissions: lb/hour tons/year
5. Method of Compliance:	
6. Allowable Emissions Comment (Description of Operating Method):	

Allowable Emissions Allowable Emissions of

1. Basis for Allowable Emissions Code:	2. Future Effective Date of Allowable Emissions:
3. Allowable Emissions and Units:	4. Equivalent Allowable Emissions: lb/hour tons/year
5. Method of Compliance:	
6. Allowable Emissions Comment (Description of Operating Method):	

**F1. EMISSIONS UNIT POLLUTANT DETAIL INFORMATION –
POTENTIAL, FUGITIVE, AND ACTUAL EMISSIONS**

(Optional for unregulated emissions units.)

Potential, Estimated Fugitive, and Baseline & Projected Actual Emissions

Complete for each pollutant identified in Subsection E if applying for an air construction permit or concurrent processing of an air construction permit and a revised or renewal Title V permit. Complete for each emissions-limited pollutant identified in Subsection E if applying for an air operation permit.

1. Pollutant Emitted: CO		2. Total Percent Efficiency of Control:	
3. Potential Emissions: 4.6 lb/hour 20.2 tons/year		4. Synthetically Limited? <input type="checkbox"/> Yes <input checked="" type="checkbox"/> No	
5. Range of Estimated Fugitive Emissions (as applicable): N/A to tons/year			
6. Emission Factor: 0.043 lb/MMBtu (CTG) 0.08 lb/MMBtu (HRSG DB) Reference: Vendor Data (CTG), AP-42 (HRSG DB)		7. Emissions Method Code: 5 (CT), 3 (HRSG DB)	
8.a. Baseline Actual Emissions (if required): tons/year		8.b. Baseline 24-month Period: From: To:	
9.a. Projected Actual Emissions (if required): tons/year		9.b. Projected Monitoring Period: <input type="checkbox"/> 5 years <input type="checkbox"/> 10 years	
10. Calculation of Emissions: See Appendix B			
11. Potential, Fugitive, and Actual Emissions Comment: Potential emissions are for the CTG/HRSG in combined cycle mode.			

**F2. EMISSIONS UNIT POLLUTANT DETAIL INFORMATION -
ALLOWABLE EMISSIONS**

Complete if the pollutant identified in Subsection F1 is or would be subject to a numerical emissions limitation.

Allowable Emissions Allowable Emissions of N/A

1. Basis for Allowable Emissions Code:	2. Future Effective Date of Allowable Emissions:
3. Allowable Emissions and Units:	4. Equivalent Allowable Emissions: lb/hour tons/year
5. Method of Compliance:	
6. Allowable Emissions Comment (Description of Operating Method):	

Allowable Emissions Allowable Emissions of

1. Basis for Allowable Emissions Code:	2. Future Effective Date of Allowable Emissions:
3. Allowable Emissions and Units:	4. Equivalent Allowable Emissions: lb/hour tons/year
5. Method of Compliance:	
6. Allowable Emissions Comment (Description of Operating Method):	

Allowable Emissions Allowable Emissions of

1. Basis for Allowable Emissions Code:	2. Future Effective Date of Allowable Emissions:
3. Allowable Emissions and Units:	4. Equivalent Allowable Emissions: lb/hour tons/year
5. Method of Compliance:	
6. Allowable Emissions Comment (Description of Operating Method):	

EMISSIONS UNIT INFORMATION

Section [1] of [6]

G. VISIBLE EMISSIONS INFORMATION

Complete if this emissions unit is or would be subject to a unit-specific visible emissions limitation.

Visible Emissions Limitation: Visible Emissions Limitation 1 of 2

1. Visible Emissions Subtype: VE20	2. Basis for Allowable Opacity: <input checked="" type="checkbox"/> Rule <input type="checkbox"/> Other
3. Allowable Opacity: Normal Conditions: 20 % Exceptional Conditions: % Maximum Period of Excess Opacity Allowed: min/hour	
4. Method of Compliance: EPA Reference Method 9	
5. Visible Emissions Comment: Rule 62-296.320(4)(b), F.A.C.	

Visible Emissions Limitation: Visible Emissions Limitation 2 of 2

1. Visible Emissions Subtype: VE99	2. Basis for Allowable Opacity: <input checked="" type="checkbox"/> Rule <input type="checkbox"/> Other
3. Allowable Opacity: Normal Conditions: % Exceptional Conditions: % Maximum Period of Excess Opacity Allowed: min/hour	
4. Method of Compliance: EPA Reference Method 9	
5. Visible Emissions Comment: Rule 62-210.700(1), F.A.C. allows excess emissions for up to 2 hours in any 24-hour period.	

FACILITY INFORMATION

EMISSIONS UNIT INFORMATION

Section [1] of [6]

H. CONTINUOUS MONITOR INFORMATION

Complete if this emissions unit is or would be subject to continuous monitoring.

Continuous Monitoring System: Continuous Monitor of N/A

1. Parameter Code:	2. Pollutant(s):
3. CMS Requirement:	<input type="checkbox"/> Rule <input type="checkbox"/> Other
4. Monitor Information... Manufacturer: Model Number:	Serial Number:
5. Installation Date:	6. Performance Specification Test Date:
7. Continuous Monitor Comment:	

Continuous Monitoring System: Continuous Monitor of

1. Parameter Code:	2. Pollutant(s):
3. CMS Requirement:	<input type="checkbox"/> Rule <input type="checkbox"/> Other
4. Monitor Information... Manufacturer: Model Number:	Serial Number:
5. Installation Date:	6. Performance Specification Test Date:
7. Continuous Monitor Comment:	

FACILITY INFORMATION

EMISSIONS UNIT INFORMATION

Section [1] of [6]

I. EMISSIONS UNIT ADDITIONAL INFORMATION

Additional Requirements for All Applications, Except as Otherwise Stated

1. Process Flow Diagram (Required for all permit applications, except Title V air operation permit revision applications if this information was submitted to the department within the previous five years and would not be altered as a result of the revision being sought) <input checked="" type="checkbox"/> Attached, Document ID: Figure 2-3 <input type="checkbox"/> Previously Submitted, Date _____
2. Fuel Analysis or Specification (Required for all permit applications, except Title V air operation permit revision applications if this information was submitted to the department within the previous five years and would not be altered as a result of the revision being sought) <input checked="" type="checkbox"/> Attached, Document ID: Attachment 2 <input type="checkbox"/> Previously Submitted, Date _____
3. Detailed Description of Control Equipment (Required for all permit applications, except Title V air operation permit revision applications if this information was submitted to the department within the previous five years and would not be altered as a result of the revision being sought) <input type="checkbox"/> Attached, Document ID: N/A <input type="checkbox"/> Previously Submitted, Date _____
4. Procedures for Startup and Shutdown (Required for all operation permit applications, except Title V air operation permit revision applications if this information was submitted to the department within the previous five years and would not be altered as a result of the revision being sought) <input type="checkbox"/> Attached, Document ID: _____ <input type="checkbox"/> Previously Submitted, Date _____ <input checked="" type="checkbox"/> Not Applicable (construction application)
5. Operation and Maintenance Plan (Required for all permit applications, except Title V air operation permit revision applications if this information was submitted to the department within the previous five years and would not be altered as a result of the revision being sought) <input type="checkbox"/> Attached, Document ID: _____ <input type="checkbox"/> Previously Submitted, Date _____ <input checked="" type="checkbox"/> Not Applicable
6. Compliance Demonstration Reports/Records <input type="checkbox"/> Attached, Document ID: _____ Test Date(s)/Pollutant(s) Tested: _____ <input type="checkbox"/> Previously Submitted, Date: _____ Test Date(s)/Pollutant(s) Tested: _____ <input type="checkbox"/> To be Submitted, Date (if known): _____ Test Date(s)/Pollutant(s) Tested: _____ <input checked="" type="checkbox"/> Not Applicable Note: For FESOP applications, all required compliance demonstration records/reports must be submitted at the time of application. For Title V air operation permit applications, all required compliance demonstration reports/records must be submitted at the time of application, or a compliance plan must be submitted at the time of application.
7. Other Information Required by Rule or Statute <input type="checkbox"/> Attached, Document ID: _____ <input checked="" type="checkbox"/> Not Applicable

FACILITY INFORMATION

EMISSIONS UNIT INFORMATION

Section [1] of [6]

Additional Requirements for Air Construction Permit Applications

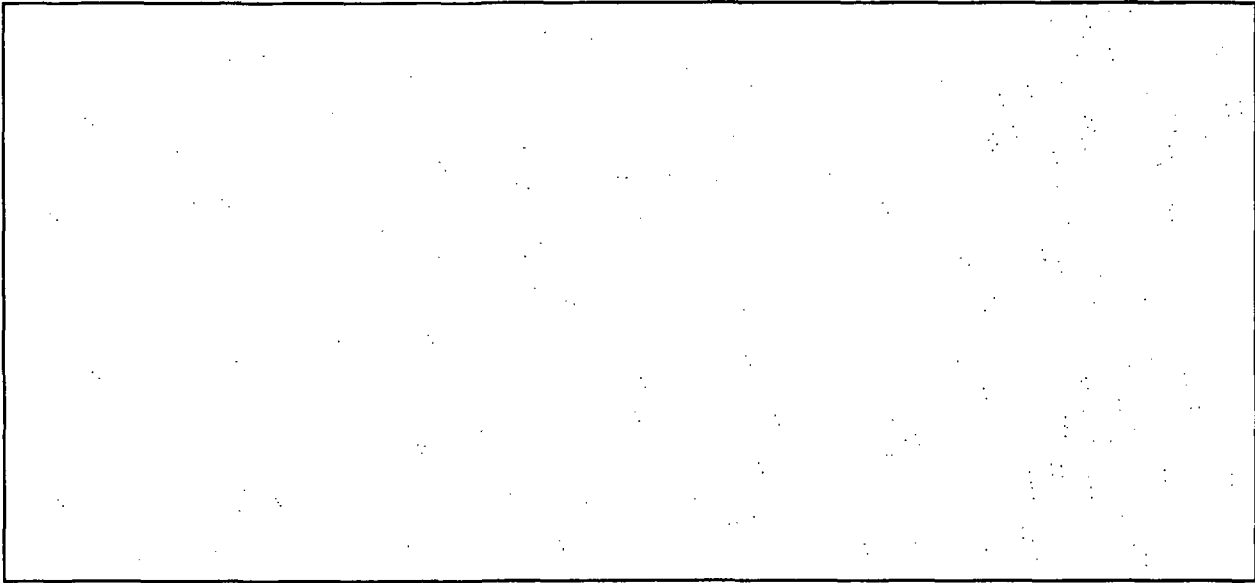
1. Control Technology Review and Analysis (Rules 62-212.400(10) and 62-212.500(7), F.A.C.; 40 CFR 63.43(d) and (e)) <input type="checkbox"/> Attached, Document ID: _____ <input checked="" type="checkbox"/> Not Applicable
2. Good Engineering Practice Stack Height Analysis (Rule 62-212.400(4)(d), F.A.C., and Rule 62-212.500(4)(f), F.A.C.) <input type="checkbox"/> Attached, Document ID: _____ <input checked="" type="checkbox"/> Not Applicable
3. Description of Stack Sampling Facilities (Required for proposed new stack sampling facilities only) <input type="checkbox"/> Attached, Document ID: _____ <input checked="" type="checkbox"/> Not Applicable

Additional Requirements for Title V Air Operation Permit Applications N/A

1. Identification of Applicable Requirements <input type="checkbox"/> Attached, Document ID: _____
2. Compliance Assurance Monitoring <input type="checkbox"/> Attached, Document ID: _____ <input type="checkbox"/> Not Applicable
3. Alternative Methods of Operation <input type="checkbox"/> Attached, Document ID: _____ <input type="checkbox"/> Not Applicable
4. Alternative Modes of Operation (Emissions Trading) <input type="checkbox"/> Attached, Document ID: _____ <input type="checkbox"/> Not Applicable
5. Acid Rain Part Application <input type="checkbox"/> Certificate of Representation (EPA Form No. 7610-1) <input type="checkbox"/> Copy Attached, Document ID: _____ <input type="checkbox"/> Acid Rain Part (Form No. 62-210.900(1)(a)) <input type="checkbox"/> Attached, Document ID: _____ <input type="checkbox"/> Previously Submitted, Date: _____ <input type="checkbox"/> Repowering Extension Plan (Form No. 62-210.900(1)(a)1.) <input type="checkbox"/> Attached, Document ID: _____ <input type="checkbox"/> Previously Submitted, Date: _____ <input type="checkbox"/> New Unit Exemption (Form No. 62-210.900(1)(a)2.) <input type="checkbox"/> Attached, Document ID: _____ <input type="checkbox"/> Previously Submitted, Date: _____ <input type="checkbox"/> Retired Unit Exemption (Form No. 62-210.900(1)(a)3.) <input type="checkbox"/> Attached, Document ID: _____ <input type="checkbox"/> Previously Submitted, Date: _____ <input type="checkbox"/> Phase II NOx Compliance Plan (Form No. 62-210.900(1)(a)4.) <input type="checkbox"/> Attached, Document ID: _____ <input type="checkbox"/> Previously Submitted, Date: _____ <input type="checkbox"/> Phase II NOx Averaging Plan (Form No. 62-210.900(1)(a)5.) <input type="checkbox"/> Attached, Document ID: _____ <input type="checkbox"/> Previously Submitted, Date: _____ <input type="checkbox"/> Not Applicable

FACILITY INFORMATION

Additional Requirements Comment



EMISSIONS UNIT INFORMATION

Section [2] of [6]

A. GENERAL EMISSIONS UNIT INFORMATION

Title V Air Operation Permit Emissions Unit Classification

1. Regulated or Unregulated Emissions Unit? (Check one, if applying for an initial, revised or renewal Title V air operation permit. Skip this item if applying for an air construction permit or FESOP only.)

- The emissions unit addressed in this Emissions Unit Information Section is a regulated emissions unit.
- The emissions unit addressed in this Emissions Unit Information Section is an unregulated emissions unit.

Emissions Unit Description and Status

1. Type of Emissions Unit Addressed in this Section: (Check one)

- This Emissions Unit Information Section addresses, as a single emissions unit, a single process or production unit, or activity, which produces one or more air pollutants and which has at least one definable emission point (stack or vent).
- This Emissions Unit Information Section addresses, as a single emissions unit, a group of process or production units and activities which has at least one definable emission point (stack or vent) but may also produce fugitive emissions.
- This Emissions Unit Information Section addresses, as a single emissions unit, one or more process or production units and activities which produce fugitive emissions only.

2. Description of Emissions Unit Addressed in this Section:

Combustion Turbine Generator (CTG) Heat Recovery Steam Generator (HRSG) Unit No. 2

3. Emissions Unit Identification Number: **002 (CTG/HRSG No. 2)**

4. Emissions Unit Status Code: C	5. Commence Construction Date: N/A	6. Initial Startup Date: N/A	7. Emissions Unit Major Group SIC Code: 49	8. Acid Rain Unit? <input type="checkbox"/> Yes <input checked="" type="checkbox"/> No
--	--	--	--	--

9. Package Unit:

Manufacturer:

Model Number:

10. Generator Nameplate Rating: **4.6 MW**

11. Emissions Unit Comment:

EMISSIONS UNIT INFORMATION

Section [2] of [6]

Emissions Unit Control Equipment

1. Control Equipment/Method(s) Description:

Low NOx Burners

2. Control Device or Method Code(s): **205**

EMISSIONS UNIT INFORMATION

Section [2] of [6]

B. EMISSIONS UNIT CAPACITY INFORMATION

(Optional for unregulated emissions units.)

Emissions Unit Operating Capacity and Schedule

1. Maximum Process or Throughput Rate:		
2. Maximum Production Rate:		
3. Maximum Heat Input Rate: 76.1 million Btu/hr		
4. Maximum Incineration Rate: pounds/hr tons/day		
5. Requested Maximum Operating Schedule:		
24 hours/day 7 days/week		
52 weeks/year 8,760 hours/year		
6. Operating Capacity/Schedule Comment:		
<p>Field 3 maximum heat input rate is the total for the CTG (40.1 MMBtu/hr) and HRSG duct burner (36 MMBtu/hr).</p>		

EMISSIONS UNIT INFORMATION

Section [2] of [6]

C. EMISSION POINT (STACK/VENT) INFORMATION
 (Optional for unregulated emissions units.)

Emission Point Description and Type

1. Identification of Point on Plot Plan or Flow Diagram: S2a and S2b		2. Emission Point Type Code: 3	
3. Descriptions of Emission Points Comprising this Emissions Unit for VE Tracking: CTG (SIMPLE CYCLE MODE) STACK - S2a CTG/HRSG (COMBINED CYCLE MODE) STACK - S2b			
4. ID Numbers or Descriptions of Emission Units with this Emission Point in Common: N/A			
5. Discharge Type Code: V	6. Stack Height: 110 feet (S2a & S2b)	7. Exit Diameter: 3.5 feet (S2a & S2b)	
8. Exit Temperature: 710 °F (S2a) 280 °F (S2a)	9. Actual Volumetric Flow Rate: 30,000 acfm (S2a) 62,000 acfm (S2b)	10. Water Vapor: N/A %	
11. Maximum Dry Standard Flow Rate: N/A dscfm		12. Nonstack Emission Point Height: N/A feet	
13. Emission Point UTM Coordinates... Zone: East (km): North (km):		14. Emission Point Latitude/Longitude... Latitude (DD/MM/SS) Longitude (DD/MM/SS)	
15. Emission Point Comment:			

EMISSIONS UNIT INFORMATION

Section [2] of [6]

D. SEGMENT (PROCESS/FUEL) INFORMATION

Segment Description and Rate: Segment 1 of 2

1. Segment Description (Process/Fuel Type): Combustion turbine fired with pipeline natural gas		
2. Source Classification Code (SCC): 2-01-002-01		3. SCC Units: Million Cubic Feet Burned
4. Maximum Hourly Rate: 0.038	5. Maximum Annual Rate: 334.55	6. Estimated Annual Activity Factor:
7. Maximum % Sulfur: N/A	8. Maximum % Ash: N/A	9. Million Btu per SCC Unit: 1,050
10. Segment Comment:		

Segment Description and Rate: Segment 2 of 2

1. Segment Description (Process/Fuel Type): Heat recovery steam generator duct burner fired with pipeline natural gas		
2. Source Classification Code (SCC): 2-01-002-01		3. SCC Units: Million Cubic Feet Burned
4. Maximum Hourly Rate: 0.0343	5. Maximum Annual Rate: 300.34	6. Estimated Annual Activity Factor:
7. Maximum % Sulfur: N/A	8. Maximum % Ash: N/A	9. Million Btu per SCC Unit: 1,050
10. Segment Comment:		

EMISSIONS UNIT INFORMATION

Section [2] of [6]

E. EMISSIONS UNIT POLLUTANTS

List of Pollutants Emitted by Emissions Unit

1. Pollutant Emitted	2. Primary Control Device Code	3. Secondary Control Device Code	4. Pollutant Regulatory Code
NOX	205		EL
SO2			EL
PM/PM10			NS
CO			NS

**F1. EMISSIONS UNIT POLLUTANT DETAIL INFORMATION –
POTENTIAL, FUGITIVE, AND ACTUAL EMISSIONS**

(Optional for unregulated emissions units.)

Potential, Estimated Fugitive, and Baseline & Projected Actual Emissions

Complete for each pollutant identified in Subsection E if applying for an air construction permit or concurrent processing of an air construction permit and a revised or renewal Title V permit. Complete for each emissions-limited pollutant identified in Subsection E if applying for an air operation permit.

1. Pollutant Emitted: NOX		2. Total Percent Efficiency of Control:	
3. Potential Emissions: 6.9 lb/hour 30.1 tons/year		4. Synthetically Limited? <input type="checkbox"/> Yes <input checked="" type="checkbox"/> No	
5. Range of Estimated Fugitive Emissions (as applicable): N/A to tons/year			
6. Emission Factor: 0.074 lb/MMBtu (CTG) 0.11 lb/MMBtu (HRSG DB) Reference: Vendor Data		7. Emissions Method Code: 5	
8.a. Baseline Actual Emissions (if required): tons/year		8.b. Baseline 24-month Period: From: To:	
9.a. Projected Actual Emissions (if required): tons/year		9.b. Projected Monitoring Period: <input type="checkbox"/> 5 years <input type="checkbox"/> 10 years	
10. Calculation of Emissions: See Appendix B			
11. Potential, Fugitive, and Actual Emissions Comment: Potential emissions are for the CTG/HRSG in combined cycle mode.			

**F2. EMISSIONS UNIT POLLUTANT DETAIL INFORMATION -
ALLOWABLE EMISSIONS**

Complete if the pollutant identified in Subsection F1 is or would be subject to a numerical emissions limitation.

Allowable Emissions Allowable Emissions 1 of 2

1. Basis for Allowable Emissions Code: ESCPD	2. Future Effective Date of Allowable Emissions: N/A
3. Allowable Emissions and Units: N/A	4. Equivalent Allowable Emissions: 6.9 lb/hour 30.1 tons/year
5. Method of Compliance: Annual stack test using EPA Reference Methods 7, 7A, 7C, 7D, or 7E and monitoring of annual operating hours.	
6. Allowable Emissions Comment (Description of Operating Method):	

Allowable Emissions Allowable Emissions 2 of 2

1. Basis for Allowable Emissions Code: RULE	2. Future Effective Date of Allowable Emissions: N/A
3. Allowable Emissions and Units: 25 ppm @ 15% O₂	4. Equivalent Allowable Emissions: N/A lb/hour N/A tons/year
5. Method of Compliance: Annual stack test using EPA Reference Methods 7, 7A, 7C, 7D, or 7E	
6. Allowable Emissions Comment (Description of Operating Method): 40 CFR Part 60, Subpart KKKK	

Allowable Emissions Allowable Emissions of

1. Basis for Allowable Emissions Code:	2. Future Effective Date of Allowable Emissions:
3. Allowable Emissions and Units:	4. Equivalent Allowable Emissions: lb/hour tons/year
5. Method of Compliance:	
6. Allowable Emissions Comment (Description of Operating Method):	

**F1. EMISSIONS UNIT POLLUTANT DETAIL INFORMATION –
POTENTIAL, FUGITIVE, AND ACTUAL EMISSIONS**

(Optional for unregulated emissions units.)

Potential, Estimated Fugitive, and Baseline & Projected Actual Emissions

Complete for each pollutant identified in Subsection E if applying for an air construction permit or concurrent processing of an air construction permit and a revised or renewal Title V permit. Complete for each emissions-limited pollutant identified in Subsection E if applying for an air operation permit.

1. Pollutant Emitted: SO2		2. Total Percent Efficiency of Control:	
3. Potential Emissions: 0.4 lb/hour 1.8 tons/year		4. Synthetically Limited? <input type="checkbox"/> Yes <input checked="" type="checkbox"/> No	
5. Range of Estimated Fugitive Emissions (as applicable): N/A to tons/year			
6. Emission Factor: 0.0054 lb/MMBtu Reference: 2.0 grains S / 100 scf natural gas		7. Emissions Method Code: 5	
8.a. Baseline Actual Emissions (if required): tons/year		8.b. Baseline 24-month Period: From: To:	
9.a. Projected Actual Emissions (if required): tons/year		9.b. Projected Monitoring Period: <input type="checkbox"/> 5 years <input type="checkbox"/> 10 years	
10. Calculation of Emissions: See Appendix B			
11. Potential, Fugitive, and Actual Emissions Comment: Potential emissions are for the CTG/HRSG in combined cycle mode.			

F2. EMISSIONS UNIT POLLUTANT DETAIL INFORMATION -
ALLOWABLE EMISSIONS

Complete if the pollutant identified in Subsection F1 is or would be subject to a numerical emissions limitation.

Allowable Emissions Allowable Emissions 1 of 1

1. Basis for Allowable Emissions Code: RULE	2. Future Effective Date of Allowable Emissions: N/A
3. Allowable Emissions and Units: 0.060 lb SO₂/MMBtu fuel sulfur limit	4. Equivalent Allowable Emissions: 4.6 lb/hour 20.0 tons/year
5. Method of Compliance: Fuel monitoring per NSPS Subpart KKKK	
6. Allowable Emissions Comment (Description of Operating Method): 40 CFR Part 60, Subpart KKKK	

Allowable Emissions Allowable Emissions of

1. Basis for Allowable Emissions Code:	2. Future Effective Date of Allowable Emissions:
3. Allowable Emissions and Units:	4. Equivalent Allowable Emissions: lb/hour tons/year
5. Method of Compliance:	
6. Allowable Emissions Comment (Description of Operating Method):	

Allowable Emissions Allowable Emissions of

1. Basis for Allowable Emissions Code:	2. Future Effective Date of Allowable Emissions:
3. Allowable Emissions and Units:	4. Equivalent Allowable Emissions: lb/hour tons/year
5. Method of Compliance:	
6. Allowable Emissions Comment (Description of Operating Method):	

**F1. EMISSIONS UNIT POLLUTANT DETAIL INFORMATION –
POTENTIAL, FUGITIVE, AND ACTUAL EMISSIONS**

(Optional for unregulated emissions units.)

Potential, Estimated Fugitive, and Baseline & Projected Actual Emissions

Complete for each pollutant identified in Subsection E if applying for an air construction permit or concurrent processing of an air construction permit and a revised or renewal Title V permit. Complete for each emissions-limited pollutant identified in Subsection E if applying for an air operation permit.

1. Pollutant Emitted: PM/PM10		2. Total Percent Efficiency of Control:	
3. Potential Emissions: 2.6 lb/hour 11.2 tons/year		4. Synthetically Limited? <input type="checkbox"/> Yes <input checked="" type="checkbox"/> No	
5. Range of Estimated Fugitive Emissions (as applicable): N/A to tons/year			
6. Emission Factor: 0.057 lb/MMBtu (CTG) 0.01 lb/MMBtu (HRSG DB) Reference: Vendor Data (CTG), AP-42 (HRSG DB)		7. Emissions Method Code: 5 (CT), 3 (HRSG DB)	
8.a. Baseline Actual Emissions (if required): tons/year		8.b. Baseline 24-month Period: From: To:	
9.a. Projected Actual Emissions (if required): tons/year		9.b. Projected Monitoring Period: <input type="checkbox"/> 5 years <input type="checkbox"/> 10 years	
10. Calculation of Emissions: See Appendix B			
11. Potential, Fugitive, and Actual Emissions Comment: Potential emissions are for the CTG/HRSG in combined cycle mode.			

**F2. EMISSIONS UNIT POLLUTANT DETAIL INFORMATION -
ALLOWABLE EMISSIONS**

Complete if the pollutant identified in Subsection F1 is or would be subject to a numerical emissions limitation.

Allowable Emissions Allowable Emissions of N/A

1. Basis for Allowable Emissions Code:	2. Future Effective Date of Allowable Emissions:
3. Allowable Emissions and Units:	4. Equivalent Allowable Emissions: lb/hour tons/year
5. Method of Compliance:	
6. Allowable Emissions Comment (Description of Operating Method):	

Allowable Emissions Allowable Emissions of

1. Basis for Allowable Emissions Code:	2. Future Effective Date of Allowable Emissions:
3. Allowable Emissions and Units:	4. Equivalent Allowable Emissions: lb/hour tons/year
5. Method of Compliance:	
6. Allowable Emissions Comment (Description of Operating Method):	

Allowable Emissions Allowable Emissions of

1. Basis for Allowable Emissions Code:	2. Future Effective Date of Allowable Emissions:
3. Allowable Emissions and Units:	4. Equivalent Allowable Emissions: lb/hour tons/year
5. Method of Compliance:	
6. Allowable Emissions Comment (Description of Operating Method):	

**F1. EMISSIONS UNIT POLLUTANT DETAIL INFORMATION –
POTENTIAL, FUGITIVE, AND ACTUAL EMISSIONS**

(Optional for unregulated emissions units.)

Potential, Estimated Fugitive, and Baseline & Projected Actual Emissions

Complete for each pollutant identified in Subsection E if applying for an air construction permit or concurrent processing of an air construction permit and a revised or renewal Title V permit. Complete for each emissions-limited pollutant identified in Subsection E if applying for an air operation permit.

1. Pollutant Emitted: CO		2. Total Percent Efficiency of Control:	
3. Potential Emissions: 4.6 lb/hour 20.2 tons/year		4. Synthetically Limited? <input type="checkbox"/> Yes <input checked="" type="checkbox"/> No	
5. Range of Estimated Fugitive Emissions (as applicable): N/A to tons/year			
6. Emission Factor: 0.043 lb/MMBtu (CTG) 0.08 lb/MMBtu (HRSG DB) Reference: Vendor Data (CTG), AP-42 (HRSG DB)		7. Emissions Method Code: 5 (CT), 3 (HRSG DB)	
8.a. Baseline Actual Emissions (if required): tons/year		8.b. Baseline 24-month Period: From: To:	
9.a. Projected Actual Emissions (if required): tons/year		9.b. Projected Monitoring Period: <input type="checkbox"/> 5 years <input type="checkbox"/> 10 years	
10. Calculation of Emissions: See Appendix B			
11. Potential, Fugitive, and Actual Emissions Comment: Potential emissions are for the CTG/HRSG in combined cycle mode.			

**F2. EMISSIONS UNIT POLLUTANT DETAIL INFORMATION -
ALLOWABLE EMISSIONS**

Complete if the pollutant identified in Subsection F1 is or would be subject to a numerical emissions limitation.

Allowable Emissions Allowable Emissions of N/A

1. Basis for Allowable Emissions Code:	2. Future Effective Date of Allowable Emissions:
3. Allowable Emissions and Units:	4. Equivalent Allowable Emissions: lb/hour tons/year
5. Method of Compliance:	
6. Allowable Emissions Comment (Description of Operating Method):	

Allowable Emissions Allowable Emissions of

1. Basis for Allowable Emissions Code:	2. Future Effective Date of Allowable Emissions:
3. Allowable Emissions and Units:	4. Equivalent Allowable Emissions: lb/hour tons/year
5. Method of Compliance:	
6. Allowable Emissions Comment (Description of Operating Method):	

Allowable Emissions Allowable Emissions of

1. Basis for Allowable Emissions Code:	2. Future Effective Date of Allowable Emissions:
3. Allowable Emissions and Units:	4. Equivalent Allowable Emissions: lb/hour tons/year
5. Method of Compliance:	
6. Allowable Emissions Comment (Description of Operating Method):	

EMISSIONS UNIT INFORMATION

Section [2] of [6]

G. VISIBLE EMISSIONS INFORMATION

Complete if this emissions unit is or would be subject to a unit-specific visible emissions limitation.

Visible Emissions Limitation: Visible Emissions Limitation 1 of 2

1. Visible Emissions Subtype: VE20	2. Basis for Allowable Opacity: <input checked="" type="checkbox"/> Rule <input type="checkbox"/> Other
3. Allowable Opacity: Normal Conditions: 20 % Exceptional Conditions: % Maximum Period of Excess Opacity Allowed: min/hour	
4. Method of Compliance: EPA Reference Method 9	
5. Visible Emissions Comment: Rule 62-296.320(4)(b), F.A.C.	

Visible Emissions Limitation: Visible Emissions Limitation 2 of 2

1. Visible Emissions Subtype: VE99	2. Basis for Allowable Opacity: <input checked="" type="checkbox"/> Rule <input type="checkbox"/> Other
3. Allowable Opacity: Normal Conditions: % Exceptional Conditions: % Maximum Period of Excess Opacity Allowed: min/hour	
4. Method of Compliance: EPA Reference Method 9	
5. Visible Emissions Comment: Rule 62-210.700(1), F.A.C. allows excess emissions for up to 2 hours in any 24-hour period.	

FACILITY INFORMATION

EMISSIONS UNIT INFORMATION

Section [2] of [6]

H. CONTINUOUS MONITOR INFORMATION

Complete if this emissions unit is or would be subject to continuous monitoring.

Continuous Monitoring System: Continuous Monitor of N/A

1. Parameter Code:	2. Pollutant(s):
3. CMS Requirement:	<input type="checkbox"/> Rule <input type="checkbox"/> Other
4. Monitor Information... Manufacturer:	Serial Number:
Model Number:	
5. Installation Date:	6. Performance Specification Test Date:
7. Continuous Monitor Comment:	

Continuous Monitoring System: Continuous Monitor of

1. Parameter Code:	2. Pollutant(s):
3. CMS Requirement:	<input type="checkbox"/> Rule <input type="checkbox"/> Other
4. Monitor Information... Manufacturer:	Serial Number:
Model Number:	
5. Installation Date:	6. Performance Specification Test Date:
7. Continuous Monitor Comment:	

FACILITY INFORMATION

EMISSIONS UNIT INFORMATION

Section [2] of [6]

I. EMISSIONS UNIT ADDITIONAL INFORMATION

Additional Requirements for All Applications, Except as Otherwise Stated

<p>1. Process Flow Diagram (Required for all permit applications, except Title V air operation permit revision applications if this information was submitted to the department within the previous five years and would not be altered as a result of the revision being sought)</p> <p><input checked="" type="checkbox"/> Attached, Document ID: Figure 2-3 <input type="checkbox"/> Previously Submitted, Date _____</p>
<p>2. Fuel Analysis or Specification (Required for all permit applications, except Title V air operation permit revision applications if this information was submitted to the department within the previous five years and would not be altered as a result of the revision being sought)</p> <p><input checked="" type="checkbox"/> Attached, Document ID: Attachment 2 <input type="checkbox"/> Previously Submitted, Date _____</p>
<p>3. Detailed Description of Control Equipment (Required for all permit applications, except Title V air operation permit revision applications if this information was submitted to the department within the previous five years and would not be altered as a result of the revision being sought)</p> <p><input type="checkbox"/> Attached, Document ID: N/A Previously Submitted, Date _____</p>
<p>4. Procedures for Startup and Shutdown (Required for all operation permit applications, except Title V air operation permit revision applications if this information was submitted to the department within the previous five years and would not be altered as a result of the revision being sought)</p> <p><input type="checkbox"/> Attached, Document ID: _____ <input type="checkbox"/> Previously Submitted, Date _____</p> <p><input checked="" type="checkbox"/> Not Applicable (construction application)</p>
<p>5. Operation and Maintenance Plan (Required for all permit applications, except Title V air operation permit revision applications if this information was submitted to the department within the previous five years and would not be altered as a result of the revision being sought)</p> <p><input type="checkbox"/> Attached, Document ID: _____ <input type="checkbox"/> Previously Submitted, Date _____</p> <p><input checked="" type="checkbox"/> Not Applicable</p>
<p>6. Compliance Demonstration Reports/Records</p> <p><input type="checkbox"/> Attached, Document ID: _____</p> <p> Test Date(s)/Pollutant(s) Tested: _____</p> <p><input type="checkbox"/> Previously Submitted, Date: _____</p> <p> Test Date(s)/Pollutant(s) Tested: _____</p> <p><input type="checkbox"/> To be Submitted, Date (if known): _____</p> <p> Test Date(s)/Pollutant(s) Tested: _____</p> <p><input checked="" type="checkbox"/> Not Applicable</p> <p>Note: For FESOP applications, all required compliance demonstration records/reports must be submitted at the time of application. For Title V air operation permit applications, all required compliance demonstration reports/records must be submitted at the time of application, or a compliance plan must be submitted at the time of application.</p>
<p>7. Other Information Required by Rule or Statute</p> <p><input type="checkbox"/> Attached, Document ID: _____ <input checked="" type="checkbox"/> Not Applicable</p>

FACILITY INFORMATION

EMISSIONS UNIT INFORMATION

Section [2] of [6]

Additional Requirements for Air Construction Permit Applications

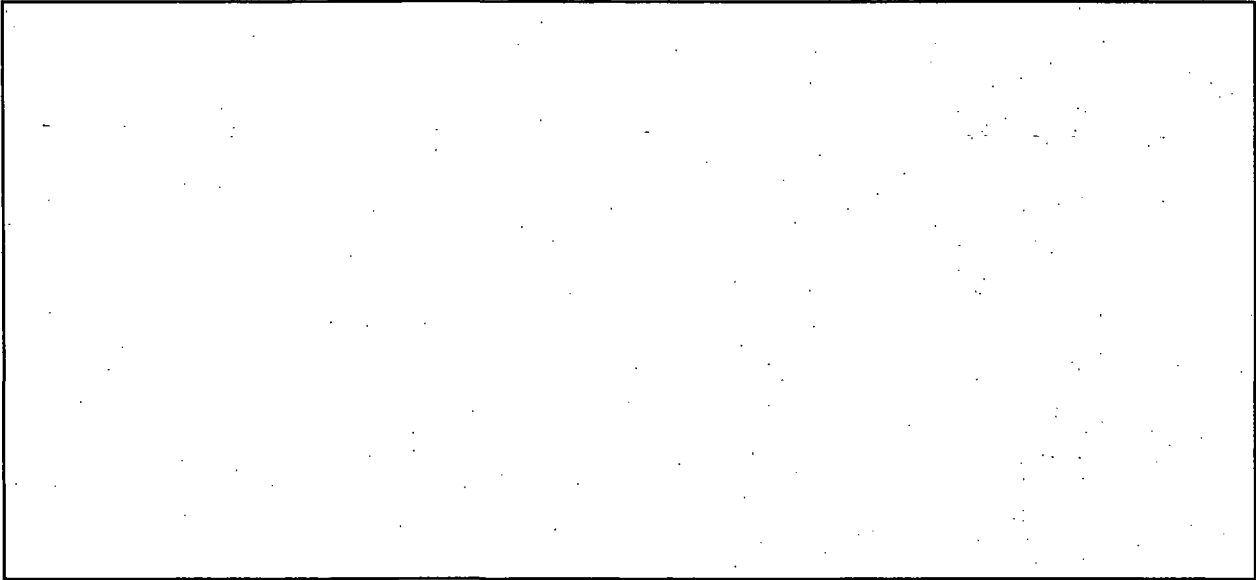
1. Control Technology Review and Analysis (Rules 62-212.400(10) and 62-212.500(7), F.A.C.; 40 CFR 63.43(d) and (e)) <input type="checkbox"/> Attached, Document ID: _____ <input checked="" type="checkbox"/> Not Applicable
2. Good Engineering Practice Stack Height Analysis (Rule 62-212.400(4)(d), F.A.C., and Rule 62-212.500(4)(f), F.A.C.) <input type="checkbox"/> Attached, Document ID: _____ <input checked="" type="checkbox"/> Not Applicable
3. Description of Stack Sampling Facilities (Required for proposed new stack sampling facilities only) <input type="checkbox"/> Attached, Document ID: _____ <input checked="" type="checkbox"/> Not Applicable

Additional Requirements for Title V Air Operation Permit Applications N/A

1. Identification of Applicable Requirements <input type="checkbox"/> Attached, Document ID: _____
2. Compliance Assurance Monitoring <input type="checkbox"/> Attached, Document ID: _____ <input type="checkbox"/> Not Applicable
3. Alternative Methods of Operation <input type="checkbox"/> Attached, Document ID: _____ <input type="checkbox"/> Not Applicable
4. Alternative Modes of Operation (Emissions Trading) <input type="checkbox"/> Attached, Document ID: _____ <input type="checkbox"/> Not Applicable
5. Acid Rain Part Application <input type="checkbox"/> Certificate of Representation (EPA Form No. 7610-1) <input type="checkbox"/> Copy Attached, Document ID: _____ <input type="checkbox"/> Acid Rain Part (Form No. 62-210.900(1)(a)) <input type="checkbox"/> Attached, Document ID: _____ <input type="checkbox"/> Previously Submitted, Date: _____ <input type="checkbox"/> Repowering Extension Plan (Form No. 62-210.900(1)(a)1.) <input type="checkbox"/> Attached, Document ID: _____ <input type="checkbox"/> Previously Submitted, Date: _____ <input type="checkbox"/> New Unit Exemption (Form No. 62-210.900(1)(a)2.) <input type="checkbox"/> Attached, Document ID: _____ <input type="checkbox"/> Previously Submitted, Date: _____ <input type="checkbox"/> Retired Unit Exemption (Form No. 62-210.900(1)(a)3.) <input type="checkbox"/> Attached, Document ID: _____ <input type="checkbox"/> Previously Submitted, Date: _____ <input type="checkbox"/> Phase II NOx Compliance Plan (Form No. 62-210.900(1)(a)4.) <input type="checkbox"/> Attached, Document ID: _____ <input type="checkbox"/> Previously Submitted, Date: _____ <input type="checkbox"/> Phase II NOx Averaging Plan (Form No. 62-210.900(1)(a)5.) <input type="checkbox"/> Attached, Document ID: _____ <input type="checkbox"/> Previously Submitted, Date: _____ <input type="checkbox"/> Not Applicable

FACILITY INFORMATION

Additional Requirements Comment



EMISSIONS UNIT INFORMATION

Section [3] of [6]

A. GENERAL EMISSIONS UNIT INFORMATION

Title V Air Operation Permit Emissions Unit Classification

1. Regulated or Unregulated Emissions Unit? (Check one, if applying for an initial, revised or renewal Title V air operation permit. Skip this item if applying for an air construction permit or FESOP only.)

The emissions unit addressed in this Emissions Unit Information Section is a regulated emissions unit.

The emissions unit addressed in this Emissions Unit Information Section is an unregulated emissions unit.

Emissions Unit Description and Status

1. Type of Emissions Unit Addressed in this Section: (Check one)

This Emissions Unit Information Section addresses, as a single emissions unit, a single process or production unit, or activity, which produces one or more air pollutants and which has at least one definable emission point (stack or vent).

This Emissions Unit Information Section addresses, as a single emissions unit, a group of process or production units and activities which has at least one definable emission point (stack or vent) but may also produce fugitive emissions.

This Emissions Unit Information Section addresses, as a single emissions unit, one or more process or production units and activities which produce fugitive emissions only.

2. Description of Emissions Unit Addressed in this Section:
Auxiliary steam boiler

3. Emissions Unit Identification Number: **003 (Auxiliary Boiler)**

4. Emissions Unit Status Code: C	5. Commence Construction Date: N/A	6. Initial Startup Date: N/A	7. Emissions Unit Major Group SIC Code: 49	8. Acid Rain Unit? <input type="checkbox"/> Yes <input checked="" type="checkbox"/> No
--	--	--	--	--

9. Package Unit:
 Manufacturer: _____ Model Number: _____

10. Generator Nameplate Rating: **MW**

11. Emissions Unit Comment:

EMISSIONS UNIT INFORMATION

Section [3] of [6]

Emissions Unit Control Equipment

1. Control Equipment/Method(s) Description:

2. Control Device or Method Code(s):

EMISSIONS UNIT INFORMATION

Section [3] of [6]

B. EMISSIONS UNIT CAPACITY INFORMATION

(Optional for unregulated emissions units.)

Emissions Unit Operating Capacity and Schedule

1. Maximum Process or Throughput Rate:
2. Maximum Production Rate:
3. Maximum Heat Input Rate: 38 million Btu/hr
4. Maximum Incineration Rate: pounds/hr tons/day
5. Requested Maximum Operating Schedule:
24 hours/day 7 days/week
52 weeks/year 8,760 hours/year
6. Operating Capacity/Schedule Comment:
The auxiliary boiler may combust natural gas for up to 8,760 hours per year. Backup low sulfur distillate fuel oil will be combusted for no more than 500 hours per year.

EMISSIONS UNIT INFORMATION

Section [3] of [6]

C. EMISSION POINT (STACK/VENT) INFORMATION
 (Optional for unregulated emissions units.)

Emission Point Description and Type

1. Identification of Point on Plot Plan or Flow Diagram: S3		2. Emission Point Type Code: 1	
3. Descriptions of Emission Points Comprising this Emissions Unit for VE Tracking: N/A			
4. ID Numbers or Descriptions of Emission Units with this Emission Point in Common: N/A			
5. Discharge Type Code: V	6. Stack Height: 110 feet	7. Exit Diameter: 2.0 feet	
8. Exit Temperature: 400 °F	9. Actual Volumetric Flow Rate: 12,800 acfm	10. Water Vapor: N/A %	
11. Maximum Dry Standard Flow Rate: N/A dscfm		12. Nonstack Emission Point Height: N/A feet	
13. Emission Point UTM Coordinates... Zone: East (km): North (km):		14. Emission Point Latitude/Longitude... Latitude (DD/MM/SS) Longitude (DD/MM/SS)	
15. Emission Point Comment:			

EMISSIONS UNIT INFORMATION

Section [3] of [6]

D. SEGMENT (PROCESS/FUEL) INFORMATION

Segment Description and Rate: Segment 1 of 2

1. Segment Description (Process/Fuel Type): Auxiliary boiler fired with pipeline natural gas		
2. Source Classification Code (SCC): 1-03-006-02		3. SCC Units: Million Cubic Feet Burned
4. Maximum Hourly Rate: 0.036	5. Maximum Annual Rate: 317.0	6. Estimated Annual Activity Factor:
7. Maximum % Sulfur: N/A	8. Maximum % Ash: N/A	9. Million Btu per SCC Unit: 1,050
10. Segment Comment:		

Segment Description and Rate: Segment 2 of 2

1. Segment Description (Process/Fuel Type): Auxiliary boiler fired with distillate fuel oil		
2. Source Classification Code (SCC): 1-03-005-02		3. SCC Units: Thousand Gallons Burned
4. Maximum Hourly Rate: 0.271	5. Maximum Annual Rate: 135.7	6. Estimated Annual Activity Factor:
7. Maximum % Sulfur: 0.05	8. Maximum % Ash: 0.01	9. Million Btu per SCC Unit: 140
10. Segment Comment: Auxiliary boiler will combust low sulfur distillate fuel oil for no more than 500 hours per year.		

EMISSIONS UNIT INFORMATION

Section [3] of [6]

E. EMISSIONS UNIT POLLUTANTS

List of Pollutants Emitted by Emissions Unit

1. - Pollutant Emitted	2. Primary Control Device Code	3. Secondary Control Device Code	4. Pollutant Regulatory Code
NOX			EL
SO2			EL
PM/PM10			EL
CO			NS

**F1. EMISSIONS UNIT POLLUTANT DETAIL INFORMATION –
POTENTIAL, FUGITIVE, AND ACTUAL EMISSIONS**

(Optional for unregulated emissions units.)

Potential, Estimated Fugitive, and Baseline & Projected Actual Emissions

Complete for each pollutant identified in Subsection E if applying for an air construction permit or concurrent processing of an air construction permit and a revised or renewal Title V permit. Complete for each emissions-limited pollutant identified in Subsection E if applying for an air operation permit.

1. Pollutant Emitted: NOX		2. Total Percent Efficiency of Control:	
3. Potential Emissions: 5.3 lb/hour 6.9 tons/year		4. Synthetically Limited? <input checked="" type="checkbox"/> Yes <input type="checkbox"/> No	
5. Range of Estimated Fugitive Emissions (as applicable): N/A to tons/year			
6. Emission Factor: 0.035 lb/MMBtu (gas) 0.14 lb/MMBtu (oil) Reference: Vendor Data (gas), AP-42 (oil)		7. Emissions Method Code: 5 (gas), 3 (oil)	
8.a. Baseline Actual Emissions (if required): tons/year		8.b. Baseline 24-month Period: From: To:	
9.a. Projected Actual Emissions (if required): tons/year		9.b. Projected Monitoring Period: <input type="checkbox"/> 5 years <input type="checkbox"/> 10 years	
10. Calculation of Emissions: See Appendix B Potential hourly rate based on oil-firing. Potential annual rate based on 8,260 hrs/yr of gas-firing, and 500 hrs/yr of oil-firing.			
11. Potential, Fugitive, and Actual Emissions Comment:			

**F2. EMISSIONS UNIT POLLUTANT DETAIL INFORMATION -
ALLOWABLE EMISSIONS**

Complete if the pollutant identified in Subsection F1 is or would be subject to a numerical emissions limitation.

Allowable Emissions Allowable Emissions 1 of 2

1. Basis for Allowable Emissions Code: ESCPSD	2. Future Effective Date of Allowable Emissions: N/A
3. Allowable Emissions and Units: N/A	4. Equivalent Allowable Emissions: 1.3 lb/hour 5.7 tons/year
5. Method of Compliance: Annual stack test using EPA Reference Methods 7, 7A, 7C, 7D, or 7E and monitoring of annual operating hours of natural gas-firing.	
6. Allowable Emissions Comment (Description of Operating Method): Allowable emissions based on natural gas-firing.	

Allowable Emissions Allowable Emissions 2 of 2

1. Basis for Allowable Emissions Code: ESCPSD	2. Future Effective Date of Allowable Emissions: N/A
3. Allowable Emissions and Units: N/A	4. Equivalent Allowable Emissions: 5.3 lb/hour 1.3 tons/year
5. Method of Compliance: Annual stack test using EPA Reference Methods 7, 7A, 7C, 7D, or 7E and monitoring of annual operating hours of fuel oil-firing.	
6. Allowable Emissions Comment (Description of Operating Method): Allowable emissions based on fuel oil-firing.	

Allowable Emissions Allowable Emissions of

1. Basis for Allowable Emissions Code:	2. Future Effective Date of Allowable Emissions:
3. Allowable Emissions and Units:	4. Equivalent Allowable Emissions: lb/hour tons/year
5. Method of Compliance:	
6. Allowable Emissions Comment (Description of Operating Method):	

**F1. EMISSIONS UNIT POLLUTANT DETAIL INFORMATION –
POTENTIAL, FUGITIVE, AND ACTUAL EMISSIONS**

(Optional for unregulated emissions units.)

Potential, Estimated Fugitive, and Baseline & Projected Actual Emissions

Complete for each pollutant identified in Subsection E if applying for an air construction permit or concurrent processing of an air construction permit and a revised or renewal Title V permit. Complete for each emissions-limited pollutant identified in Subsection E if applying for an air operation permit.

1. Pollutant Emitted: SO2		2. Total Percent Efficiency of Control:	
3. Potential Emissions: 1.9 lb/hour 1.3 tons/year		4. Synthetically Limited? <input checked="" type="checkbox"/> Yes <input type="checkbox"/> No	
5. Range of Estimated Fugitive Emissions (as applicable): N/A to tons/year			
6. Emission Factor: 0.0054 lb/MMBtu (gas) 0.05 lb/MMBtu (oil) Reference: 2.0 grains S / 100 scf natural gas (gas), AP-42 (oil)		7. Emissions Method Code: 3 (oil), 5 (gas)	
8.a. Baseline Actual Emissions (if required): tons/year		8.b. Baseline 24-month Period: From: To:	
9.a. Projected Actual Emissions (if required): tons/year		9.b. Projected Monitoring Period: <input type="checkbox"/> 5 years <input type="checkbox"/> 10 years	
10. Calculation of Emissions: See Appendix B Potential hourly rate based on oil-firing. Potential annual rate based on 8,260 hrs/yr of gas-firing, and 500 hrs/yr of oil-firing.			
11. Potential, Fugitive, and Actual Emissions Comment:			

**F2. EMISSIONS UNIT POLLUTANT DETAIL INFORMATION -
ALLOWABLE EMISSIONS**

Complete if the pollutant identified in Subsection F1 is or would be subject to a numerical emissions limitation.

Allowable Emissions Allowable Emissions 1 of 1

1. Basis for Allowable Emissions Code: RULE	2. Future Effective Date of Allowable Emissions: N/A
3. Allowable Emissions and Units: 0.5 percent S fuel oil	4. Equivalent Allowable Emissions: N/A lb/hour N/A tons/year
5. Method of Compliance: Fuel monitoring per NSPS Subpart Dc	
6. Allowable Emissions Comment (Description of Operating Method): 40 CFR Part 60, Subpart Dc	

Allowable Emissions Allowable Emissions of

1. Basis for Allowable Emissions Code:	2. Future Effective Date of Allowable Emissions:
3. Allowable Emissions and Units:	4. Equivalent Allowable Emissions: lb/hour tons/year
5. Method of Compliance:	
6. Allowable Emissions Comment (Description of Operating Method):	

Allowable Emissions Allowable Emissions of

1. Basis for Allowable Emissions Code:	2. Future Effective Date of Allowable Emissions:
3. Allowable Emissions and Units:	4. Equivalent Allowable Emissions: lb/hour tons/year
5. Method of Compliance:	
6. Allowable Emissions Comment (Description of Operating Method):	

**F1. EMISSIONS UNIT POLLUTANT DETAIL INFORMATION –
POTENTIAL, FUGITIVE, AND ACTUAL EMISSIONS**

(Optional for unregulated emissions units.)

Potential, Estimated Fugitive, and Baseline & Projected Actual Emissions

Complete for each pollutant identified in Subsection E if applying for an air construction permit or concurrent processing of an air construction permit and a revised or renewal Title V permit. Complete for each emissions-limited pollutant identified in Subsection E if applying for an air operation permit.

1. Pollutant Emitted: PM/PM10		2. Total Percent Efficiency of Control:	
3. Potential Emissions: 0.9 lb/hour 1.4 tons/year		4. Synthetically Limited? <input checked="" type="checkbox"/> Yes <input type="checkbox"/> No	
5. Range of Estimated Fugitive Emissions (as applicable): N/A to tons/year			
6. Emission Factor: 0.01 lb/MMBtu (gas) 0.02 lb/MMBtu (oil) Reference: AP-42		7. Emissions Method Code: 3	
8.a. Baseline Actual Emissions (if required): tons/year		8.b. Baseline 24-month Period: From: To:	
9.a. Projected Actual Emissions (if required): tons/year		9.b. Projected Monitoring Period: <input type="checkbox"/> 5 years <input type="checkbox"/> 10 years	
10. Calculation of Emissions: See Appendix B Potential hourly rate based on oil-firing. Potential annual rate based on 8,260 hrs/yr of gas-firing, and 500 hrs/yr of oil-firing.			
11. Potential, Fugitive, and Actual Emissions Comment:			

**F2. EMISSIONS UNIT POLLUTANT DETAIL INFORMATION -
ALLOWABLE EMISSIONS**

Complete if the pollutant identified in Subsection F1 is or would be subject to a numerical emissions limitation.

Allowable Emissions Allowable Emissions 1 of 1

1. Basis for Allowable Emissions Code: RULE	2. Future Effective Date of Allowable Emissions: N/A
3. Allowable Emissions and Units: 0.030 lb/MMBtu	4. Equivalent Allowable Emissions: 1.1 lb/hour 0.29 tons/year
5. Method of Compliance: Fuel monitoring per NSPS Subpart Dc	
6. Allowable Emissions Comment (Description of Operating Method): 40 CFR Part 60, Subpart Dc Emission limit applicable during oil-firing.	

Allowable Emissions Allowable Emissions of

1. Basis for Allowable Emissions Code:	2. Future Effective Date of Allowable Emissions:
3. Allowable Emissions and Units:	4. Equivalent Allowable Emissions: lb/hour tons/year
5. Method of Compliance:	
6. Allowable Emissions Comment (Description of Operating Method):	

Allowable Emissions Allowable Emissions of

1. Basis for Allowable Emissions Code:	2. Future Effective Date of Allowable Emissions:
3. Allowable Emissions and Units:	4. Equivalent Allowable Emissions: lb/hour tons/year
5. Method of Compliance:	
6. Allowable Emissions Comment (Description of Operating Method):	

**F1. EMISSIONS UNIT POLLUTANT DETAIL INFORMATION –
POTENTIAL, FUGITIVE, AND ACTUAL EMISSIONS**

(Optional for unregulated emissions units.)

Potential, Estimated Fugitive, and Baseline & Projected Actual Emissions

Complete for each pollutant identified in Subsection E if applying for an air construction permit or concurrent processing of an air construction permit and a revised or renewal Title V permit. Complete for each emissions-limited pollutant identified in Subsection E if applying for an air operation permit.

1. Pollutant Emitted: CO		2. Total Percent Efficiency of Control:	
3. Potential Emissions: 3.0 lb/hour 13.3 tons/year		4. Synthetically Limited? <input type="checkbox"/> Yes <input checked="" type="checkbox"/> No	
5. Range of Estimated Fugitive Emissions (as applicable): N/A to tons/year			
6. Emission Factor: 0.08 lb/MMBtu (gas) 0.04 lb/MMBtu (oil) Reference: AP-42		7. Emissions Method Code: 3	
8.a. Baseline Actual Emissions (if required): tons/year		8.b. Baseline 24-month Period: From: To:	
9.a. Projected Actual Emissions (if required): tons/year		9.b. Projected Monitoring Period: <input type="checkbox"/> 5 years <input type="checkbox"/> 10 years	
10. Calculation of Emissions: See Appendix B Potential hourly rate based on gas-firing. Potential annual rate based on 8,760 hrs/yr of gas-firing.			
11. Potential, Fugitive, and Actual Emissions Comment:			

**F2. EMISSIONS UNIT POLLUTANT DETAIL INFORMATION -
 ALLOWABLE EMISSIONS**

Complete if the pollutant identified in Subsection F1 is or would be subject to a numerical emissions limitation.

Allowable Emissions Allowable Emissions of N/A

1. Basis for Allowable Emissions Code:	2. Future Effective Date of Allowable Emissions:
3. Allowable Emissions and Units:	4. Equivalent Allowable Emissions: lb/hour tons/year
5. Method of Compliance:	
6. Allowable Emissions Comment (Description of Operating Method):	

Allowable Emissions Allowable Emissions of

1. Basis for Allowable Emissions Code:	2. Future Effective Date of Allowable Emissions:
3. Allowable Emissions and Units:	4. Equivalent Allowable Emissions: lb/hour tons/year
5. Method of Compliance:	
6. Allowable Emissions Comment (Description of Operating Method):	

Allowable Emissions Allowable Emissions of

1. Basis for Allowable Emissions Code:	2. Future Effective Date of Allowable Emissions:
3. Allowable Emissions and Units:	4. Equivalent Allowable Emissions: lb/hour tons/year
5. Method of Compliance:	
6. Allowable Emissions Comment (Description of Operating Method):	

EMISSIONS UNIT INFORMATION
Section [3] of [6]

G. VISIBLE EMISSIONS INFORMATION

Complete if this emissions unit is or would be subject to a unit-specific visible emissions limitation.

Visible Emissions Limitation: Visible Emissions Limitation 1 of 2

1. Visible Emissions Subtype: VE20	2. Basis for Allowable Opacity: <input checked="" type="checkbox"/> Rule <input type="checkbox"/> Other
3. Allowable Opacity: Normal Conditions: 20 % Exceptional Conditions: 27 % Maximum Period of Excess Opacity Allowed: 6 min/hour	
4. Method of Compliance: EPA Reference Method 9	
5. Visible Emissions Comment: Rule 62-296.320(4)(b), F.A.C. NSPS Subpart Dc.	

Visible Emissions Limitation: Visible Emissions Limitation 2 of 2

1. Visible Emissions Subtype: VE99	2. Basis for Allowable Opacity: <input checked="" type="checkbox"/> Rule <input type="checkbox"/> Other
3. Allowable Opacity: Normal Conditions: % Exceptional Conditions: % Maximum Period of Excess Opacity Allowed: min/hour	
4. Method of Compliance: EPA Reference Method 9	
5. Visible Emissions Comment: Rule 62-210.700(1), F.A.C. allows excess emissions for up to 2 hours in any 24-hour period.	

FACILITY INFORMATION

EMISSIONS UNIT INFORMATION

Section [3] of [6]

H. CONTINUOUS MONITOR INFORMATION

Complete if this emissions unit is or would be subject to continuous monitoring.

Continuous Monitoring System: Continuous Monitor of N/A

1. Parameter Code:	2. Pollutant(s):
3. CMS Requirement:	<input type="checkbox"/> Rule <input type="checkbox"/> Other
4. Monitor Information... Manufacturer: Model Number: Serial Number:	
5. Installation Date:	6. Performance Specification Test Date:
7. Continuous Monitor Comment:	

Continuous Monitoring System: Continuous Monitor of

1. Parameter Code:	2. Pollutant(s):
3. CMS Requirement:	<input type="checkbox"/> Rule <input type="checkbox"/> Other
4. Monitor Information... Manufacturer: Model Number: Serial Number:	
5. Installation Date:	6. Performance Specification Test Date:
7. Continuous Monitor Comment:	

FACILITY INFORMATION

EMISSIONS UNIT INFORMATION

Section [3] of [6]

I. EMISSIONS UNIT ADDITIONAL INFORMATION

Additional Requirements for All Applications, Except as Otherwise Stated

<p>1. Process Flow Diagram (Required for all permit applications, except Title V air operation permit revision applications if this information was submitted to the department within the previous five years and would not be altered as a result of the revision being sought)</p> <p><input checked="" type="checkbox"/> Attached, Document ID: Figure 2-3 <input type="checkbox"/> Previously Submitted, Date _____</p>
<p>2. Fuel Analysis or Specification (Required for all permit applications, except Title V air operation permit revision applications if this information was submitted to the department within the previous five years and would not be altered as a result of the revision being sought)</p> <p><input checked="" type="checkbox"/> Attached, Document ID: Attachment 2 <input type="checkbox"/> Previously Submitted, Date _____</p>
<p>3. Detailed Description of Control Equipment (Required for all permit applications, except Title V air operation permit revision applications if this information was submitted to the department within the previous five years and would not be altered as a result of the revision being sought)</p> <p><input type="checkbox"/> Attached, Document ID: N/A Previously Submitted, Date _____</p>
<p>4. Procedures for Startup and Shutdown (Required for all operation permit applications, except Title V air operation permit revision applications if this information was submitted to the department within the previous five years and would not be altered as a result of the revision being sought)</p> <p><input type="checkbox"/> Attached, Document ID: _____ <input type="checkbox"/> Previously Submitted, Date _____</p> <p><input checked="" type="checkbox"/> Not Applicable (construction application)</p>
<p>5. Operation and Maintenance Plan (Required for all permit applications, except Title V air operation permit revision applications if this information was submitted to the department within the previous five years and would not be altered as a result of the revision being sought)</p> <p><input type="checkbox"/> Attached, Document ID: _____ <input type="checkbox"/> Previously Submitted, Date _____</p> <p><input checked="" type="checkbox"/> Not Applicable</p>
<p>6. Compliance Demonstration Reports/Records</p> <p><input type="checkbox"/> Attached, Document ID: _____ Test Date(s)/Pollutant(s) Tested: _____</p> <p><input type="checkbox"/> Previously Submitted, Date: _____ Test Date(s)/Pollutant(s) Tested: _____</p> <p><input type="checkbox"/> To be Submitted, Date (if known): _____ Test Date(s)/Pollutant(s) Tested: _____</p> <p><input checked="" type="checkbox"/> Not Applicable</p> <p>Note: For FESOP applications, all required compliance demonstration records/reports must be submitted at the time of application. For Title V air operation permit applications, all required compliance demonstration reports/records must be submitted at the time of application, or a compliance plan must be submitted at the time of application.</p>
<p>7. Other Information Required by Rule or Statute</p> <p><input type="checkbox"/> Attached, Document ID: _____ <input checked="" type="checkbox"/> Not Applicable</p>

FACILITY INFORMATION

EMISSIONS UNIT INFORMATION

Section [3] of [6]

Additional Requirements for Air Construction Permit Applications

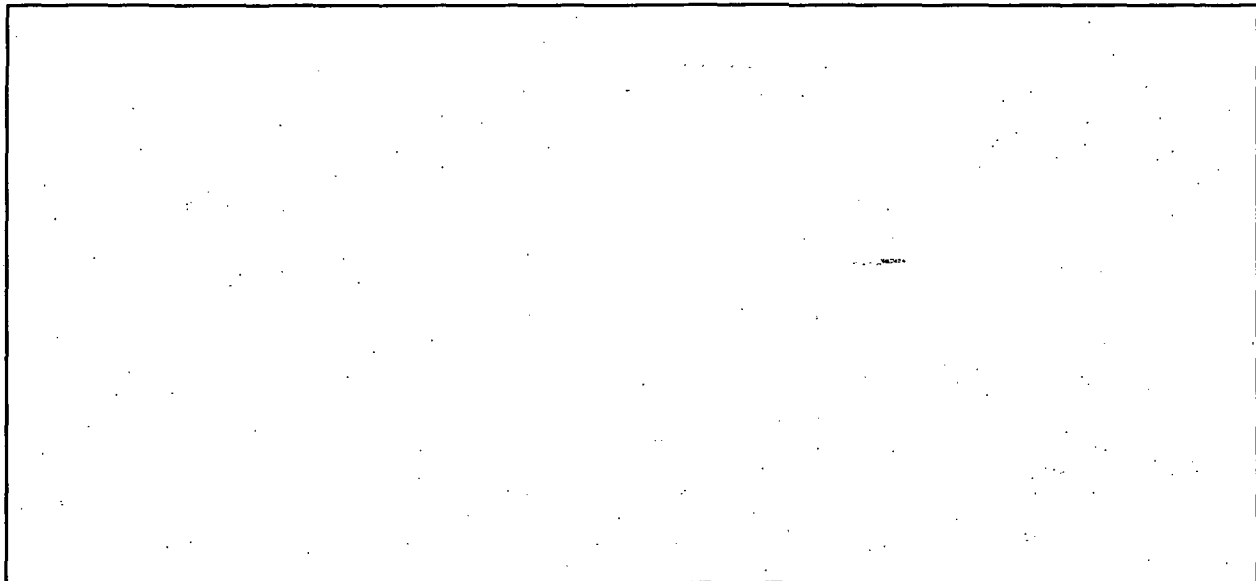
1. Control Technology Review and Analysis (Rules 62-212.400(10) and 62-212.500(7), F.A.C.; 40 CFR 63.43(d) and (e)) <input type="checkbox"/> Attached, Document ID: _____ <input checked="" type="checkbox"/> Not Applicable
2. Good Engineering Practice Stack Height Analysis (Rule 62-212.400(4)(d), F.A.C., and Rule 62-212.500(4)(f), F.A.C.) <input type="checkbox"/> Attached, Document ID: _____ <input checked="" type="checkbox"/> Not Applicable
3. Description of Stack Sampling Facilities (Required for proposed new stack sampling facilities only) <input type="checkbox"/> Attached, Document ID: _____ <input checked="" type="checkbox"/> Not Applicable

Additional Requirements for Title V Air Operation Permit Applications N/A

1. Identification of Applicable Requirements <input type="checkbox"/> Attached, Document ID: _____
2. Compliance Assurance Monitoring <input type="checkbox"/> Attached, Document ID: _____ <input type="checkbox"/> Not Applicable
3. Alternative Methods of Operation <input type="checkbox"/> Attached, Document ID: _____ <input type="checkbox"/> Not Applicable
4. Alternative Modes of Operation (Emissions Trading) <input type="checkbox"/> Attached, Document ID: _____ <input type="checkbox"/> Not Applicable
5. Acid Rain Part Application <input type="checkbox"/> Certificate of Representation (EPA Form No. 7610-1) <input type="checkbox"/> Copy Attached, Document ID: _____ <input type="checkbox"/> Acid Rain Part (Form No. 62-210.900(1)(a)) <input type="checkbox"/> Attached, Document ID: _____ <input type="checkbox"/> Previously Submitted, Date: _____ <input type="checkbox"/> Repowering Extension Plan (Form No. 62-210.900(1)(a)1.) <input type="checkbox"/> Attached, Document ID: _____ <input type="checkbox"/> Previously Submitted, Date: _____ <input type="checkbox"/> New Unit Exemption (Form No. 62-210.900(1)(a)2.) <input type="checkbox"/> Attached, Document ID: _____ <input type="checkbox"/> Previously Submitted, Date: _____ <input type="checkbox"/> Retired Unit Exemption (Form No. 62-210.900(1)(a)3.) <input type="checkbox"/> Attached, Document ID: _____ <input type="checkbox"/> Previously Submitted, Date: _____ <input type="checkbox"/> Phase II NOx Compliance Plan (Form No. 62-210.900(1)(a)4.) <input type="checkbox"/> Attached, Document ID: _____ <input type="checkbox"/> Previously Submitted, Date: _____ <input type="checkbox"/> Phase II NOx Averaging Plan (Form No. 62-210.900(1)(a)5.) <input type="checkbox"/> Attached, Document ID: _____ <input type="checkbox"/> Previously Submitted, Date: _____ <input type="checkbox"/> Not Applicable

FACILITY INFORMATION

Additional Requirements Comment



EMISSIONS UNIT INFORMATION

Section [4] of [6]

A. GENERAL EMISSIONS UNIT INFORMATION

Title V Air Operation Permit Emissions Unit Classification

1. Regulated or Unregulated Emissions Unit? (Check one, if applying for an initial, revised or renewal Title V air operation permit. Skip this item if applying for an air construction permit or FESOP only.)

The emissions unit addressed in this Emissions Unit Information Section is a regulated emissions unit.

The emissions unit addressed in this Emissions Unit Information Section is an unregulated emissions unit.

Emissions Unit Description and Status

1. Type of Emissions Unit Addressed in this Section: (Check one)

This Emissions Unit Information Section addresses, as a single emissions unit, a single process or production unit, or activity, which produces one or more air pollutants and which has at least one definable emission point (stack or vent).

This Emissions Unit Information Section addresses, as a single emissions unit, a group of process or production units and activities which has at least one definable emission point (stack or vent) but may also produce fugitive emissions.

This Emissions Unit Information Section addresses, as a single emissions unit, one or more process or production units and activities which produce fugitive emissions only.

2. Description of Emissions Unit Addressed in this Section:
Emergency Diesel Generator No. 1

3. Emissions Unit Identification Number: **004 (Emergency Generator No. 1)**

4. Emissions Unit Status Code: C	5. Commence Construction Date: N/A	6. Initial Startup Date: N/A	7. Emissions Unit Major Group SIC Code: 49	8. Acid Rain Unit? <input type="checkbox"/> Yes <input checked="" type="checkbox"/> No
--	--	--	--	--

9. Package Unit:
Manufacturer: _____ Model Number: _____

10. Generator Nameplate Rating: **2.5 MW**

11. Emissions Unit Comment:

EMISSIONS UNIT INFORMATION

Section [4] of [6]

Emissions Unit Control Equipment

1. Control Equipment/Method(s) Description:

2. Control Device or Method Code(s):

EMISSIONS UNIT INFORMATION

Section [4] of [6]

C. EMISSION POINT (STACK/VENT) INFORMATION

(Optional for unregulated emissions units.)

Emission Point Description and Type

1. Identification of Point on Plot Plan or Flow Diagram: S4		2. Emission Point Type Code: 1	
3. Descriptions of Emission Points Comprising this Emissions Unit for VE Tracking: N/A			
4. ID Numbers or Descriptions of Emission Units with this Emission Point in Common: N/A			
5. Discharge Type Code: V	6. Stack Height: 110 feet	7. Exit Diameter: 2.0 feet	
8. Exit Temperature: 832 °F	9. Actual Volumetric Flow Rate: 18,200 acfm	10. Water Vapor: N/A %	
11. Maximum Dry Standard Flow Rate: N/A dscfm		12. Nonstack Emission Point Height: N/A feet	
13. Emission Point UTM Coordinates... Zone: East (km): North (km):		14. Emission Point Latitude/Longitude... Latitude (DD/MM/SS) Longitude (DD/MM/SS)	
15. Emission Point Comment:			

EMISSIONS UNIT INFORMATION

Section [4] of [6]

D. SEGMENT (PROCESS/FUEL) INFORMATION

Segment Description and Rate: Segment 1 of 1

1. Segment Description (Process/Fuel Type): Emergency generator fired with distillate fuel oil		
2. Source Classification Code (SCC): 2-01-001-02		3. SCC Units: Thousand Gallons Burned
4. Maximum Hourly Rate: 0.15	5. Maximum Annual Rate: 75.4	6. Estimated Annual Activity Factor:
7. Maximum % Sulfur: 0.05	8. Maximum % Ash: 0.01	9. Million Btu per SCC Unit: 140
10. Segment Comment: Fuel flow estimated based on engine rating of 3,017 hp and assumed heat rate of 7,000 Btu/hp-hr.		

Segment Description and Rate: Segment of

1. Segment Description (Process/Fuel Type):		
2. Source Classification Code (SCC):		3. SCC Units:
4. Maximum Hourly Rate:	5. Maximum Annual Rate:	6. Estimated Annual Activity Factor:
7. Maximum % Sulfur:	8. Maximum % Ash:	9. Million Btu per SCC Unit:
10. Segment Comment:		

**F1. EMISSIONS UNIT POLLUTANT DETAIL INFORMATION –
POTENTIAL, FUGITIVE, AND ACTUAL EMISSIONS**

(Optional for unregulated emissions units.)

Potential, Estimated Fugitive, and Baseline & Projected Actual Emissions

Complete for each pollutant identified in Subsection E if applying for an air construction permit or concurrent processing of an air construction permit and a revised or renewal Title V permit. Complete for each emissions-limited pollutant identified in Subsection E if applying for an air operation permit.

1. Pollutant Emitted: NOX		2. Total Percent Efficiency of Control:	
3. Potential Emissions: 50.0 lb/hour 12.5 tons/year		4. Synthetically Limited? <input checked="" type="checkbox"/> Yes <input type="checkbox"/> No	
5. Range of Estimated Fugitive Emissions (as applicable): N/A to tons/year			
6. Emission Factor: 7.52 gm/hp-hr Reference: Vendor Data		7. Emissions Method Code: 5	
8.a. Baseline Actual Emissions (if required): tons/year		8.b. Baseline 24-month Period: From: To:	
9.a. Projected Actual Emissions (if required): tons/year		9.b. Projected Monitoring Period: <input type="checkbox"/> 5 years <input type="checkbox"/> 10 years	
10. Calculation of Emissions: See Appendix B Potential annual rate based on 500 hrs/yr of oil-firing.			
11. Potential, Fugitive, and Actual Emissions Comment:			

**F2. EMISSIONS UNIT POLLUTANT DETAIL INFORMATION -
ALLOWABLE EMISSIONS**

Complete if the pollutant identified in Subsection F1 is or would be subject to a numerical emissions limitation.

Allowable Emissions Allowable Emissions 1 of 2

1. Basis for Allowable Emissions Code: ESCPSD	2. Future Effective Date of Allowable Emissions: N/A
3. Allowable Emissions and Units: N/A	4. Equivalent Allowable Emissions: 50.0 lb/hour 12.5 tons/year
5. Method of Compliance: Annual stack test using EPA Reference Methods 7, 7A, 7C, 7D, or 7E and monitoring of annual operating hours.	
6. Allowable Emissions Comment (Description of Operating Method):	

Allowable Emissions Allowable Emissions 2 of 2

1. Basis for Allowable Emissions Code: RULE	2. Future Effective Date of Allowable Emissions: N/A
3. Allowable Emissions and Units: NSPS Subpart III	4. Equivalent Allowable Emissions: N/A lb/hour N/A tons/year
5. Method of Compliance: Engine manufacturer certification per NSPS Subpart III.	
6. Allowable Emissions Comment (Description of Operating Method):	

**F1. EMISSIONS UNIT POLLUTANT DETAIL INFORMATION –
POTENTIAL, FUGITIVE, AND ACTUAL EMISSIONS.**

(Optional for unregulated emissions units.)

Potential, Estimated Fugitive, and Baseline & Projected Actual Emissions

Complete for each pollutant identified in Subsection E if applying for an air construction permit or concurrent processing of an air construction permit and a revised or renewal Title V permit. Complete for each emissions-limited pollutant identified in Subsection E if applying for an air operation permit.

1. Pollutant Emitted: SO2		2. Total Percent Efficiency of Control:	
3. Potential Emissions: 1.2 lb/hour 0.31 tons/year		4. Synthetically Limited? <input checked="" type="checkbox"/> Yes <input type="checkbox"/> No	
5. Range of Estimated Fugitive Emissions (as applicable): N/A to tons/year			
6. Emission Factor: 0.18 gm/hp-hr Reference: AP-42		7. Emissions Method Code: 3	
8.a. Baseline Actual Emissions (if required): tons/year		8.b. Baseline 24-month Period: From: To:	
9.a. Projected Actual Emissions (if required): tons/year		9.b. Projected Monitoring Period: <input type="checkbox"/> 5 years <input type="checkbox"/> 10 years	
10. Calculation of Emissions: See Appendix B Potential annual rate based on 500 hrs/yr of oil-firing.			
11. Potential, Fugitive, and Actual Emissions Comment:			

**F2. EMISSIONS UNIT POLLUTANT DETAIL INFORMATION -
 ALLOWABLE EMISSIONS**

Complete if the pollutant identified in Subsection F1 is or would be subject to a numerical emissions limitation.

Allowable Emissions Allowable Emissions of N/A

1. Basis for Allowable Emissions Code:	2. Future Effective Date of Allowable Emissions:
3. Allowable Emissions and Units:	4. Equivalent Allowable Emissions: lb/hour tons/year
5. Method of Compliance:	
6. Allowable Emissions Comment (Description of Operating Method):	

Allowable Emissions Allowable Emissions of

1. Basis for Allowable Emissions Code:	2. Future Effective Date of Allowable Emissions:
3. Allowable Emissions and Units:	4. Equivalent Allowable Emissions: lb/hour tons/year
5. Method of Compliance:	
6. Allowable Emissions Comment (Description of Operating Method):	

Allowable Emissions Allowable Emissions of

1. Basis for Allowable Emissions Code:	2. Future Effective Date of Allowable Emissions:
3. Allowable Emissions and Units:	4. Equivalent Allowable Emissions: lb/hour tons/year
5. Method of Compliance:	
6. Allowable Emissions Comment (Description of Operating Method):	

**F1. EMISSIONS UNIT POLLUTANT DETAIL INFORMATION –
POTENTIAL, FUGITIVE, AND ACTUAL EMISSIONS**

(Optional for unregulated emissions units.)

Potential, Estimated Fugitive, and Baseline & Projected Actual Emissions

Complete for each pollutant identified in Subsection E if applying for an air construction permit or concurrent processing of an air construction permit and a revised or renewal Title V permit. Complete for each emissions-limited pollutant identified in Subsection E if applying for an air operation permit.

1. Pollutant Emitted: PM/PM10		2. Total Percent Efficiency of Control:	
3. Potential Emissions: 0.6 lb/hour 0.2 tons/year		4. Synthetically Limited? <input checked="" type="checkbox"/> Yes <input type="checkbox"/> No	
5. Range of Estimated Fugitive Emissions (as applicable): N/A to tons/year			
6. Emission Factor: 0.09 gm/hp-hr Reference: Vendor Data		7. Emissions Method Code: 5	
8.a. Baseline Actual Emissions (if required): tons/year		8.b. Baseline 24-month Period: From: To:	
9.a. Projected Actual Emissions (if required): tons/year		9.b. Projected Monitoring Period: <input type="checkbox"/> 5 years <input type="checkbox"/> 10 years	
10. Calculation of Emissions: See Appendix B Potential annual rate based on 500 hrs/yr of oil-firing.			
11. Potential, Fugitive, and Actual Emissions Comment:			

F2. EMISSIONS UNIT POLLUTANT DETAIL INFORMATION -
ALLOWABLE EMISSIONS

Complete if the pollutant identified in Subsection F1 is or would be subject to a numerical emissions limitation.

Allowable Emissions Allowable Emissions 1 of 1

1. Basis for Allowable Emissions Code: RULE	2. Future Effective Date of Allowable Emissions: N/A
3. Allowable Emissions and Units: NSPS Subpart III	4. Equivalent Allowable Emissions: N/A lb/hour N/A tons/year
5. Method of Compliance: Engine manufacturer certification per NSPS Subpart III.	
6. Allowable Emissions Comment (Description of Operating Method):	

Allowable Emissions Allowable Emissions of

1. Basis for Allowable Emissions Code:	2. Future Effective Date of Allowable Emissions:
3. Allowable Emissions and Units:	4. Equivalent Allowable Emissions: lb/hour tons/year
5. Method of Compliance:	
6. Allowable Emissions Comment (Description of Operating Method):	

**F1. EMISSIONS UNIT POLLUTANT DETAIL INFORMATION –
POTENTIAL, FUGITIVE, AND ACTUAL EMISSIONS**

(Optional for unregulated emissions units.)

Potential, Estimated Fugitive, and Baseline & Projected Actual Emissions

Complete for each pollutant identified in Subsection E if applying for an air construction permit or concurrent processing of an air construction permit and a revised or renewal Title V permit. Complete for each emissions-limited pollutant identified in Subsection E if applying for an air operation permit.

1. Pollutant Emitted: CO		2. Total Percent Efficiency of Control:	
3. Potential Emissions: 5.1 lb/hour 1.3 tons/year		4. Synthetically Limited? <input checked="" type="checkbox"/> Yes <input type="checkbox"/> No	
5. Range of Estimated Fugitive Emissions (as applicable): N/A to tons/year			
6. Emission Factor: 0.76 gm/hp-hr Reference: Vendor Data		7. Emissions Method Code: 5	
8.a. Baseline Actual Emissions (if required): tons/year		8.b. Baseline 24-month Period: From: To:	
9.a. Projected Actual Emissions (if required): tons/year		9.b. Projected Monitoring Period: <input type="checkbox"/> 5 years <input type="checkbox"/> 10 years	
10. Calculation of Emissions: See Appendix B Potential annual rate based on 500 hrs/yr of oil-firing.			
11. Potential, Fugitive, and Actual Emissions Comment:			

F2. EMISSIONS UNIT POLLUTANT DETAIL INFORMATION -
ALLOWABLE EMISSIONS

Complete if the pollutant identified in Subsection F1 is or would be subject to a numerical emissions limitation.

Allowable Emissions Allowable Emissions 1 of 1

1. Basis for Allowable Emissions Code: RULE	2. Future Effective Date of Allowable Emissions: N/A
3. Allowable Emissions and Units: NSPS Subpart III	4. Equivalent Allowable Emissions: N/A lb/hour N/A tons/year
5. Method of Compliance: Engine manufacturer certification per NSPS Subpart III.	
6. Allowable Emissions Comment (Description of Operating Method):	

Allowable Emissions Allowable Emissions of

1. Basis for Allowable Emissions Code:	2. Future Effective Date of Allowable Emissions:
3. Allowable Emissions and Units:	4. Equivalent Allowable Emissions: lb/hour tons/year
5. Method of Compliance:	
6. Allowable Emissions Comment (Description of Operating Method):	

**F1. EMISSIONS UNIT POLLUTANT DETAIL INFORMATION –
POTENTIAL, FUGITIVE, AND ACTUAL EMISSIONS**

(Optional for unregulated emissions units.)

Potential, Estimated Fugitive, and Baseline & Projected Actual Emissions

Complete for each pollutant identified in Subsection E if applying for an air construction permit or concurrent processing of an air construction permit and a revised or renewal Title V permit. Complete for each emissions-limited pollutant identified in Subsection E if applying for an air operation permit.

1. Pollutant Emitted: VOC		2. Total Percent Efficiency of Control:	
3. Potential Emissions: 0.2 lb/hour 0.05 tons/year		4. Synthetically Limited? <input checked="" type="checkbox"/> Yes <input type="checkbox"/> No	
5. Range of Estimated Fugitive Emissions (as applicable): N/A to tons/year			
6. Emission Factor: 0.03 gm/hp-hr Reference: Vendor Data		7. Emissions Method Code: 5	
8.a. Baseline Actual Emissions (if required): tons/year		8.b. Baseline 24-month Period: From: To:	
9.a. Projected Actual Emissions (if required): tons/year		9.b. Projected Monitoring Period: <input type="checkbox"/> 5 years <input type="checkbox"/> 10 years	
10. Calculation of Emissions: See Appendix B Potential annual rate based on 500 hrs/yr of oil-firing.			
11. Potential, Fugitive, and Actual Emissions Comment:			

**F2. EMISSIONS UNIT POLLUTANT DETAIL INFORMATION -
 ALLOWABLE EMISSIONS**

Complete if the pollutant identified in Subsection F1 is or would be subject to a numerical emissions limitation.

Allowable Emissions Allowable Emissions 1 of 1

1. Basis for Allowable Emissions Code: RULE	2. Future Effective Date of Allowable Emissions: N/A
3. Allowable Emissions and Units: NSPS Subpart III	4. Equivalent Allowable Emissions: N/A lb/hour N/A tons/year
5. Method of Compliance: Engine manufacturer certification per NSPS Subpart III.	
6. Allowable Emissions Comment (Description of Operating Method):	

Allowable Emissions Allowable Emissions of

1. Basis for Allowable Emissions Code:	2. Future Effective Date of Allowable Emissions:
3. Allowable Emissions and Units:	4. Equivalent Allowable Emissions: lb/hour tons/year
5. Method of Compliance:	
6. Allowable Emissions Comment (Description of Operating Method):	

EMISSIONS UNIT INFORMATION

Section [4] of [6]

G. VISIBLE EMISSIONS INFORMATION

Complete if this emissions unit is or would be subject to a unit-specific visible emissions limitation.

Visible Emissions Limitation: Visible Emissions Limitation 1 of 2

1. Visible Emissions Subtype: VE20	2. Basis for Allowable Opacity: <input checked="" type="checkbox"/> Rule <input type="checkbox"/> Other
3. Allowable Opacity: Normal Conditions: 20 % Exceptional Conditions: % Maximum Period of Excess Opacity Allowed: min/hour	
4. Method of Compliance: EPA Reference Method 9	
5. Visible Emissions Comment: Rule 62-296.320(4)(b), F.A.C.	

Visible Emissions Limitation: Visible Emissions Limitation 2 of 2

1. Visible Emissions Subtype: VE99	2. Basis for Allowable Opacity: <input checked="" type="checkbox"/> Rule <input type="checkbox"/> Other
3. Allowable Opacity: Normal Conditions: % Exceptional Conditions: % Maximum Period of Excess Opacity Allowed: min/hour	
4. Method of Compliance: EPA Reference Method 9	
5. Visible Emissions Comment: Rule 62-210.700(1), F.A.C. allows excess emissions for up to 2 hours in any 24-hour period.	

FACILITY INFORMATION

EMISSIONS UNIT INFORMATION

Section [4] of [6]

H. CONTINUOUS MONITOR INFORMATION

Complete if this emissions unit is or would be subject to continuous monitoring.

Continuous Monitoring System: Continuous Monitor of N/A

1. Parameter Code:	2. Pollutant(s):
3. CMS Requirement:	<input type="checkbox"/> Rule <input type="checkbox"/> Other
4. Monitor Information... Manufacturer: Model Number:	Serial Number:
5. Installation Date:	6. Performance Specification Test Date:
7. Continuous Monitor Comment:	

Continuous Monitoring System: Continuous Monitor of

1. Parameter Code:	2. Pollutant(s):
3. CMS Requirement:	<input type="checkbox"/> Rule <input type="checkbox"/> Other
4. Monitor Information... Manufacturer: Model Number:	Serial Number:
5. Installation Date:	6. Performance Specification Test Date:
7. Continuous Monitor Comment:	

FACILITY INFORMATION

EMISSIONS UNIT INFORMATION

Section [4] of [6]

I. EMISSIONS UNIT ADDITIONAL INFORMATION

Additional Requirements for All Applications, Except as Otherwise Stated

<p>1. Process Flow Diagram (Required for all permit applications, except Title V air operation permit revision applications if this information was submitted to the department within the previous five years and would not be altered as a result of the revision being sought)</p> <p><input checked="" type="checkbox"/> Attached, Document ID: Figure 2-3 <input type="checkbox"/> Previously Submitted, Date _____</p>
<p>2. Fuel Analysis or Specification (Required for all permit applications, except Title V air operation permit revision applications if this information was submitted to the department within the previous five years and would not be altered as a result of the revision being sought)</p> <p><input checked="" type="checkbox"/> Attached, Document ID: Attachment 2 <input type="checkbox"/> Previously Submitted, Date _____</p>
<p>3. Detailed Description of Control Equipment (Required for all permit applications, except Title V air operation permit revision applications if this information was submitted to the department within the previous five years and would not be altered as a result of the revision being sought)</p> <p><input type="checkbox"/> Attached, Document ID: N/A Previously Submitted, Date _____</p>
<p>4. Procedures for Startup and Shutdown (Required for all operation permit applications, except Title V air operation permit revision applications if this information was submitted to the department within the previous five years and would not be altered as a result of the revision being sought)</p> <p><input type="checkbox"/> Attached, Document ID: _____ <input type="checkbox"/> Previously Submitted, Date _____</p> <p><input checked="" type="checkbox"/> Not Applicable (construction application)</p>
<p>5. Operation and Maintenance Plan (Required for all permit applications, except Title V air operation permit revision applications if this information was submitted to the department within the previous five years and would not be altered as a result of the revision being sought)</p> <p><input type="checkbox"/> Attached, Document ID: _____ <input type="checkbox"/> Previously Submitted, Date _____</p> <p><input checked="" type="checkbox"/> Not Applicable</p>
<p>6. Compliance Demonstration Reports/Records</p> <p><input type="checkbox"/> Attached, Document ID: _____</p> <p> Test Date(s)/Pollutant(s) Tested: _____</p> <p><input type="checkbox"/> Previously Submitted, Date: _____</p> <p> Test Date(s)/Pollutant(s) Tested: _____</p> <p><input type="checkbox"/> To be Submitted, Date (if known): _____</p> <p> Test Date(s)/Pollutant(s) Tested: _____</p> <p><input checked="" type="checkbox"/> Not Applicable</p> <p>Note: For FESOP applications, all required compliance demonstration records/reports must be submitted at the time of application. For Title V air operation permit applications, all required compliance demonstration reports/records must be submitted at the time of application, or a compliance plan must be submitted at the time of application.</p>
<p>7. Other Information Required by Rule or Statute</p> <p><input type="checkbox"/> Attached, Document ID: _____ <input checked="" type="checkbox"/> Not Applicable</p>

FACILITY INFORMATION

EMISSIONS UNIT INFORMATION

Section [4] of [6]

Additional Requirements for Air Construction Permit Applications

1. Control Technology Review and Analysis (Rules 62-212.400(10) and 62-212.500(7), F.A.C.; 40 CFR 63.43(d) and (e)) <input type="checkbox"/> Attached, Document ID: _____ <input checked="" type="checkbox"/> Not Applicable
2. Good Engineering Practice Stack Height Analysis (Rule 62-212.400(4)(d), F.A.C., and Rule 62-212.500(4)(f), F.A.C.) <input type="checkbox"/> Attached, Document ID: _____ <input checked="" type="checkbox"/> Not Applicable
3. Description of Stack Sampling Facilities (Required for proposed new stack sampling facilities only) <input type="checkbox"/> Attached, Document ID: _____ <input checked="" type="checkbox"/> Not Applicable

Additional Requirements for Title V Air Operation Permit Applications N/A

1. Identification of Applicable Requirements <input type="checkbox"/> Attached, Document ID: _____
2. Compliance Assurance Monitoring <input type="checkbox"/> Attached, Document ID: _____ <input type="checkbox"/> Not Applicable
3. Alternative Methods of Operation <input type="checkbox"/> Attached, Document ID: _____ <input type="checkbox"/> Not Applicable
4. Alternative Modes of Operation (Emissions Trading) <input type="checkbox"/> Attached, Document ID: _____ <input type="checkbox"/> Not Applicable
5. Acid Rain Part Application <input type="checkbox"/> Certificate of Representation (EPA Form No. 7610-1) <input type="checkbox"/> Copy Attached, Document ID: _____ <input type="checkbox"/> Acid Rain Part (Form No. 62-210.900(1)(a)) <input type="checkbox"/> Attached, Document ID: _____ <input type="checkbox"/> Previously Submitted, Date: _____ <input type="checkbox"/> Repowering Extension Plan (Form No. 62-210.900(1)(a)1.) <input type="checkbox"/> Attached, Document ID: _____ <input type="checkbox"/> Previously Submitted, Date: _____ <input type="checkbox"/> New Unit Exemption (Form No. 62-210.900(1)(a)2.) <input type="checkbox"/> Attached, Document ID: _____ <input type="checkbox"/> Previously Submitted, Date: _____ <input type="checkbox"/> Retired Unit Exemption (Form No. 62-210.900(1)(a)3.) <input type="checkbox"/> Attached, Document ID: _____ <input type="checkbox"/> Previously Submitted, Date: _____ <input type="checkbox"/> Phase II NOx Compliance Plan (Form No. 62-210.900(1)(a)4.) <input type="checkbox"/> Attached, Document ID: _____ <input type="checkbox"/> Previously Submitted, Date: _____ <input type="checkbox"/> Phase II NOx Averaging Plan (Form No. 62-210.900(1)(a)5.) <input type="checkbox"/> Attached, Document ID: _____ <input type="checkbox"/> Previously Submitted, Date: _____ <input type="checkbox"/> Not Applicable

FACILITY INFORMATION

Additional Requirements Comment

[Empty rectangular box for Additional Requirements Comment]

EMISSIONS UNIT INFORMATION

Section [5] of [6]

A. GENERAL EMISSIONS UNIT INFORMATION

Title V Air Operation Permit Emissions Unit Classification

1. Regulated or Unregulated Emissions Unit? (Check one, if applying for an initial, revised or renewal Title V air operation permit. Skip this item if applying for an air construction permit or FESOP only.)

- The emissions unit addressed in this Emissions Unit Information Section is a regulated emissions unit.
- The emissions unit addressed in this Emissions Unit Information Section is an unregulated emissions unit.

Emissions Unit Description and Status

1. Type of Emissions Unit Addressed in this Section: (Check one)

- This Emissions Unit Information Section addresses, as a single emissions unit, a single process or production unit, or activity, which produces one or more air pollutants and which has at least one definable emission point (stack or vent).
- This Emissions Unit Information Section addresses, as a single emissions unit, a group of process or production units and activities which has at least one definable emission point (stack or vent) but may also produce fugitive emissions.
- This Emissions Unit Information Section addresses, as a single emissions unit, one or more process or production units and activities which produce fugitive emissions only.

2. Description of Emissions Unit Addressed in this Section:
Emergency Diesel Generator No. 2

3. Emissions Unit Identification Number: **005 (Emergency Generator No. 2)**

4. Emissions Unit Status Code: C	5. Commence Construction Date: N/A	6. Initial Startup Date: N/A	7. Emissions Unit Major Group SIC Code: 49	8. Acid Rain Unit? <input type="checkbox"/> Yes <input checked="" type="checkbox"/> No
--	--	--	--	--

9. Package Unit:
Manufacturer: _____ Model Number: _____

10. Generator Nameplate Rating: **2.5 MW**

11. Emissions Unit Comment:

EMISSIONS UNIT INFORMATION

Section [5] of [6]

Emissions Unit Control Equipment

1. Control Equipment/Method(s) Description:

2. Control Device or Method Code(s):

EMISSIONS UNIT INFORMATION

Section [5] of [6]

B. EMISSIONS UNIT CAPACITY INFORMATION

(Optional for unregulated emissions units.)

Emissions Unit Operating Capacity and Schedule

1. Maximum Process or Throughput Rate:	
2. Maximum Production Rate:	
3. Maximum Heat Input Rate: million Btu/hr	
4. Maximum Incineration Rate: pounds/hr tons/day	
5. Requested Maximum Operating Schedule:	
hours/day	days/week
weeks/year	500 hours/year
6. Operating Capacity/Schedule Comment:	

EMISSIONS UNIT INFORMATION

Section [5] of [6]

C. EMISSION POINT (STACK/VENT) INFORMATION
 (Optional for unregulated emissions units.)

Emission Point Description and Type

1. Identification of Point on Plot Plan or Flow Diagram: S5		2. Emission Point Type Code: 1	
3. Descriptions of Emission Points Comprising this Emissions Unit for VE Tracking: N/A			
4. ID Numbers or Descriptions of Emission Units with this Emission Point in Common: N/A			
5. Discharge Type Code: V	6. Stack Height: 110 feet	7. Exit Diameter: 2.0 feet	
8. Exit Temperature: 832 °F	9. Actual Volumetric Flow Rate: 18,200 acfm	10. Water Vapor: N/A %	
11. Maximum Dry Standard Flow Rate: N/A dscfm		12. Nonstack Emission Point Height: N/A feet	
13. Emission Point UTM Coordinates... Zone: East (km): North (km):		14. Emission Point Latitude/Longitude... Latitude (DD/MM/SS) Longitude (DD/MM/SS)	
15. Emission Point Comment:			

EMISSIONS UNIT INFORMATION

Section [5] of [6]

D. SEGMENT (PROCESS/FUEL) INFORMATION

Segment Description and Rate: Segment 1 of 1

1. Segment Description (Process/Fuel Type): Emergency generator fired with distillate fuel oil		
2. Source Classification Code (SCC): 2-01-001-02		3. SCC Units: Thousand Gallons Burned
4. Maximum Hourly Rate: 0.15	5. Maximum Annual Rate: 75.4	6. Estimated Annual Activity Factor:
7. Maximum % Sulfur: 0.05	8. Maximum % Ash: 0.01	9. Million Btu per SCC Unit: 140
10. Segment Comment: Fuel flow estimated based on engine rating of 3,017 hp and assumed heat rate of 7,000 Btu/hp-hr.		

Segment Description and Rate: Segment of

1. Segment Description (Process/Fuel Type):		
2. Source Classification Code (SCC):		3. SCC Units:
4. Maximum Hourly Rate:	5. Maximum Annual Rate:	6. Estimated Annual Activity Factor:
7. Maximum % Sulfur:	8. Maximum % Ash:	9. Million Btu per SCC Unit:
10. Segment Comment:		

EMISSIONS UNIT INFORMATION

Section [5] of [6]

E. EMISSIONS UNIT POLLUTANTS

List of Pollutants Emitted by Emissions Unit

1. Pollutant Emitted	2. Primary Control Device Code	3. Secondary Control Device Code	4. Pollutant Regulatory Code
NOX			EL
SO2			NS
PM/PM10			EL
CO			EL
VOC			EL

**F1. EMISSIONS UNIT POLLUTANT DETAIL INFORMATION –
POTENTIAL, FUGITIVE, AND ACTUAL EMISSIONS**

(Optional for unregulated emissions units.)

Potential, Estimated Fugitive, and Baseline & Projected Actual Emissions

Complete for each pollutant identified in Subsection E if applying for an air construction permit or concurrent processing of an air construction permit and a revised or renewal Title V permit. Complete for each emissions-limited pollutant identified in Subsection E if applying for an air operation permit.

1. Pollutant Emitted: NOX		2. Total Percent Efficiency of Control:	
3. Potential Emissions: 50.0 lb/hour 12.5 tons/year		4. Synthetically Limited? <input checked="" type="checkbox"/> Yes <input type="checkbox"/> No	
5. Range of Estimated Fugitive Emissions (as applicable): N/A to tons/year			
6. Emission Factor: 7.52 gm/hp-hr Reference: Vendor Data		7. Emissions Method Code: 5	
8.a. Baseline Actual Emissions (if required): tons/year		8.b. Baseline 24-month Period: From: To:	
9.a. Projected Actual Emissions (if required): tons/year		9.b. Projected Monitoring Period: <input type="checkbox"/> 5 years <input type="checkbox"/> 10 years	
10. Calculation of Emissions: See Appendix B Potential annual rate based on 500 hrs/yr of oil-firing.			
11. Potential, Fugitive, and Actual Emissions Comment:			

**F2. EMISSIONS UNIT POLLUTANT DETAIL INFORMATION -
 ALLOWABLE EMISSIONS**

Complete if the pollutant identified in Subsection F1 is or would be subject to a numerical emissions limitation.

Allowable Emissions Allowable Emissions 1 of 2

1. Basis for Allowable Emissions Code: ESCPSD	2. Future Effective Date of Allowable Emissions: N/A
3. Allowable Emissions and Units: N/A	4. Equivalent Allowable Emissions: 50.0 lb/hour 12.5 tons/year
5. Method of Compliance: Annual stack test using EPA Reference Methods 7, 7A, 7C, 7D, or 7E and monitoring of annual operating hours.	
6. Allowable Emissions Comment (Description of Operating Method):	

Allowable Emissions Allowable Emissions 2 of 2

1. Basis for Allowable Emissions Code: RULE	2. Future Effective Date of Allowable Emissions: N/A
3. Allowable Emissions and Units: NSPS Subpart IIII	4. Equivalent Allowable Emissions: N/A lb/hour N/A tons/year
5. Method of Compliance: Engine manufacturer certification per NSPS Subpart IIII.	
6. Allowable Emissions Comment (Description of Operating Method):	

**F1. EMISSIONS UNIT POLLUTANT DETAIL INFORMATION –
POTENTIAL, FUGITIVE, AND ACTUAL EMISSIONS**

(Optional for unregulated emissions units.)

Potential, Estimated Fugitive, and Baseline & Projected Actual Emissions

Complete for each pollutant identified in Subsection E if applying for an air construction permit or concurrent processing of an air construction permit and a revised or renewal Title V permit. Complete for each emissions-limited pollutant identified in Subsection E if applying for an air operation permit.

1. Pollutant Emitted: SO2		2. Total Percent Efficiency of Control:	
3. Potential Emissions: 1.2 lb/hour 0.31 tons/year		4. Synthetically Limited? <input checked="" type="checkbox"/> Yes <input type="checkbox"/> No	
5. Range of Estimated Fugitive Emissions (as applicable): N/A to tons/year			
6. Emission Factor: 0.18 gm/hp-hr Reference: AP-42		7. Emissions Method Code: 3	
8.a. Baseline Actual Emissions (if required): tons/year		8.b. Baseline 24-month Period: From: To:	
9.a. Projected Actual Emissions (if required): tons/year		9.b. Projected Monitoring Period: <input type="checkbox"/> 5 years <input type="checkbox"/> 10 years	
10. Calculation of Emissions: See Appendix B Potential annual rate based on 500 hrs/yr of oil-firing.			
11. Potential, Fugitive, and Actual Emissions Comment:			

**F2. EMISSIONS UNIT POLLUTANT DETAIL INFORMATION -
 ALLOWABLE EMISSIONS**

Complete if the pollutant identified in Subsection F1 is or would be subject to a numerical emissions limitation.

Allowable Emissions Allowable Emissions of N/A

1. Basis for Allowable Emissions Code:	2. Future Effective Date of Allowable Emissions:
3. Allowable Emissions and Units:	4. Equivalent Allowable Emissions: lb/hour tons/year
5. Method of Compliance:	
6. Allowable Emissions Comment (Description of Operating Method):	

Allowable Emissions Allowable Emissions of

1. Basis for Allowable Emissions Code:	2. Future Effective Date of Allowable Emissions:
3. Allowable Emissions and Units:	4. Equivalent Allowable Emissions: lb/hour tons/year
5. Method of Compliance:	
6. Allowable Emissions Comment (Description of Operating Method):	

Allowable Emissions Allowable Emissions of

1. Basis for Allowable Emissions Code:	2. Future Effective Date of Allowable Emissions:
3. Allowable Emissions and Units:	4. Equivalent Allowable Emissions: lb/hour tons/year
5. Method of Compliance:	
6. Allowable Emissions Comment (Description of Operating Method):	

**F1. EMISSIONS UNIT POLLUTANT DETAIL INFORMATION -
POTENTIAL, FUGITIVE, AND ACTUAL EMISSIONS**

(Optional for unregulated emissions units.)

Potential, Estimated Fugitive, and Baseline & Projected Actual Emissions

Complete for each pollutant identified in Subsection E if applying for an air construction permit or concurrent processing of an air construction permit and a revised or renewal Title V permit. Complete for each emissions-limited pollutant identified in Subsection E if applying for an air operation permit.

1. Pollutant Emitted: PM/PM10		2. Total Percent Efficiency of Control:	
3. Potential Emissions: 0.6 lb/hour 0.2 tons/year		4. Synthetically Limited? <input checked="" type="checkbox"/> Yes <input type="checkbox"/> No	
5. Range of Estimated Fugitive Emissions (as applicable): N/A to tons/year			
6. Emission Factor: 0.09 gm/hp-hr Reference: Vendor Data		7. Emissions Method Code: 5	
8.a. Baseline Actual Emissions (if required): tons/year		8.b. Baseline 24-month Period: From: To:	
9.a. Projected Actual Emissions (if required): tons/year		9.b. Projected Monitoring Period: <input type="checkbox"/> 5 years <input type="checkbox"/> 10 years	
10. Calculation of Emissions: See Appendix B Potential annual rate based on 500 hrs/yr of oil-firing.			
11. Potential, Fugitive, and Actual Emissions Comment:			

**F2. EMISSIONS UNIT POLLUTANT DETAIL INFORMATION -
ALLOWABLE EMISSIONS**

Complete if the pollutant identified in Subsection F1 is or would be subject to a numerical emissions limitation.

Allowable Emissions Allowable Emissions 1 of 1

1. Basis for Allowable Emissions Code: RULE	2. Future Effective Date of Allowable Emissions: N/A
3. Allowable Emissions and Units: NSPS Subpart IIII	4. Equivalent Allowable Emissions: N/A lb/hour N/A tons/year
5. Method of Compliance: Engine manufacturer certification per NSPS Subpart IIII.	
6. Allowable Emissions Comment (Description of Operating Method):	

Allowable Emissions Allowable Emissions of

1. Basis for Allowable Emissions Code:	2. Future Effective Date of Allowable Emissions:
3. Allowable Emissions and Units:	4. Equivalent Allowable Emissions: lb/hour tons/year
5. Method of Compliance:	
6. Allowable Emissions Comment (Description of Operating Method):	

**F1. EMISSIONS UNIT POLLUTANT DETAIL INFORMATION -
POTENTIAL, FUGITIVE, AND ACTUAL EMISSIONS**

(Optional for unregulated emissions units.)

Potential, Estimated Fugitive, and Baseline & Projected Actual Emissions

Complete for each pollutant identified in Subsection E if applying for an air construction permit or concurrent processing of an air construction permit and a revised or renewal Title V permit. Complete for each emissions-limited pollutant identified in Subsection E if applying for an air operation permit.

1. Pollutant Emitted: CO		2. Total Percent Efficiency of Control:	
3. Potential Emissions: 5.1 lb/hour 1.3 tons/year		4. Synthetically Limited? <input checked="" type="checkbox"/> Yes <input type="checkbox"/> No	
5. Range of Estimated Fugitive Emissions (as applicable): N/A to tons/year			
6. Emission Factor: 0.76 gm/hp-hr Reference: Vendor Data		7. Emissions Method Code: 5	
8.a. Baseline Actual Emissions (if required): tons/year		8.b. Baseline 24-month Period: From: To:	
9.a. Projected Actual Emissions (if required): tons/year		9.b. Projected Monitoring Period: <input type="checkbox"/> 5 years <input type="checkbox"/> 10 years	
10. Calculation of Emissions: See Appendix B Potential annual rate based on 500 hrs/yr of oil-firing.			
11. Potential, Fugitive, and Actual Emissions Comment:			

**F2. EMISSIONS UNIT POLLUTANT DETAIL INFORMATION -
ALLOWABLE EMISSIONS**

Complete if the pollutant identified in Subsection F1 is or would be subject to a numerical emissions limitation.

Allowable Emissions Allowable Emissions 1 of 1

1. Basis for Allowable Emissions Code: RULE	2. Future Effective Date of Allowable Emissions: N/A
3. Allowable Emissions and Units: NSPS Subpart IIII	4. Equivalent Allowable Emissions: N/A lb/hour N/A tons/year
5. Method of Compliance: Engine manufacturer certification per NSPS Subpart IIII.	
6. Allowable Emissions Comment (Description of Operating Method):	

Allowable Emissions Allowable Emissions of

1. Basis for Allowable Emissions Code:	2. Future Effective Date of Allowable Emissions:
3. Allowable Emissions and Units:	4. Equivalent Allowable Emissions: lb/hour tons/year
5. Method of Compliance:	
6. Allowable Emissions Comment (Description of Operating Method):	

**F1. EMISSIONS UNIT POLLUTANT DETAIL INFORMATION –
POTENTIAL, FUGITIVE, AND ACTUAL EMISSIONS**

(Optional for unregulated emissions units.)

Potential, Estimated Fugitive, and Baseline & Projected Actual Emissions

Complete for each pollutant identified in Subsection E if applying for an air construction permit or concurrent processing of an air construction permit and a revised or renewal Title V permit. Complete for each emissions-limited pollutant identified in Subsection E if applying for an air operation permit.

1. Pollutant Emitted: VOC		2. Total Percent Efficiency of Control:	
3. Potential Emissions: 0.2 lb/hour 0.05 tons/year		4. Synthetically Limited? <input checked="" type="checkbox"/> Yes <input type="checkbox"/> No	
5. Range of Estimated Fugitive Emissions (as applicable): N/A to tons/year			
6. Emission Factor: 0.03 gm/hp-hr Reference: Vendor Data		7. Emissions Method Code: 5	
8.a. Baseline Actual Emissions (if required): tons/year		8.b. Baseline 24-month Period: From: To:	
9.a. Projected Actual Emissions (if required): tons/year		9.b. Projected Monitoring Period: <input type="checkbox"/> 5 years <input type="checkbox"/> 10 years	
10. Calculation of Emissions: See Appendix B Potential annual rate based on 500 hrs/yr of oil-firing.			
11. Potential, Fugitive, and Actual Emissions Comment:			

**F2. EMISSIONS UNIT POLLUTANT DETAIL INFORMATION -
ALLOWABLE EMISSIONS**

Complete if the pollutant identified in Subsection F1 is or would be subject to a numerical emissions limitation.

Allowable Emissions Allowable Emissions 1 of 1

1. Basis for Allowable Emissions Code: RULE	2. Future Effective Date of Allowable Emissions: N/A
3. Allowable Emissions and Units: NSPS Subpart IIII	4. Equivalent Allowable Emissions: N/A lb/hour N/A tons/year
5. Method of Compliance: Engine manufacturer certification per NSPS Subpart IIII.	
6. Allowable Emissions Comment (Description of Operating Method):	

Allowable Emissions Allowable Emissions of

1. Basis for Allowable Emissions Code:	2. Future Effective Date of Allowable Emissions:
3. Allowable Emissions and Units:	4. Equivalent Allowable Emissions: lb/hour tons/year
5. Method of Compliance:	
6. Allowable Emissions Comment (Description of Operating Method):	

EMISSIONS UNIT INFORMATION
Section [5] of [6]

G. VISIBLE EMISSIONS INFORMATION

Complete if this emissions unit is or would be subject to a unit-specific visible emissions limitation.

Visible Emissions Limitation: Visible Emissions Limitation 1 of 2

1. Visible Emissions Subtype: VE20	2. Basis for Allowable Opacity: <input checked="" type="checkbox"/> Rule <input type="checkbox"/> Other
3. Allowable Opacity: Normal Conditions: 20 % Exceptional Conditions: % Maximum Period of Excess Opacity Allowed: min/hour	
4. Method of Compliance: EPA Reference Method 9	
5. Visible Emissions Comment: Rule 62-296.320(4)(b), F.A.C.	

Visible Emissions Limitation: Visible Emissions Limitation 2 of 2

1. Visible Emissions Subtype: VE99	2. Basis for Allowable Opacity: <input checked="" type="checkbox"/> Rule <input type="checkbox"/> Other
3. Allowable Opacity: Normal Conditions: % Exceptional Conditions: % Maximum Period of Excess Opacity Allowed: min/hour	
4. Method of Compliance: EPA Reference Method 9	
5. Visible Emissions Comment: Rule 62-210.700(1), F.A.C. allows excess emissions for up to 2 hours in any 24-hour period.	

FACILITY INFORMATION

EMISSIONS UNIT INFORMATION

Section [5] of [6]

H. CONTINUOUS MONITOR INFORMATION

Complete if this emissions unit is or would be subject to continuous monitoring.

Continuous Monitoring System: Continuous Monitor of N/A

1. Parameter Code:	2. Pollutant(s):
3. CMS Requirement:	<input type="checkbox"/> Rule <input type="checkbox"/> Other
4. Monitor Information... Manufacturer: Model Number: Serial Number:	
5. Installation Date:	6. Performance Specification Test Date:
7. Continuous Monitor Comment:	

Continuous Monitoring System: Continuous Monitor of

1. Parameter Code:	2. Pollutant(s):
3. CMS Requirement:	<input type="checkbox"/> Rule <input type="checkbox"/> Other
4. Monitor Information... Manufacturer: Model Number: Serial Number:	
5. Installation Date:	6. Performance Specification Test Date:
7. Continuous Monitor Comment:	

FACILITY INFORMATION

EMISSIONS UNIT INFORMATION

Section [5] of [6]

I. EMISSIONS UNIT ADDITIONAL INFORMATION

Additional Requirements for All Applications, Except as Otherwise Stated

1. Process Flow Diagram (Required for all permit applications, except Title V air operation permit revision applications if this information was submitted to the department within the previous five years and would not be altered as a result of the revision being sought) <input checked="" type="checkbox"/> Attached, Document ID: Figure 2-3 <input type="checkbox"/> Previously Submitted, Date _____
2. Fuel Analysis or Specification (Required for all permit applications, except Title V air operation permit revision applications if this information was submitted to the department within the previous five years and would not be altered as a result of the revision being sought) <input checked="" type="checkbox"/> Attached, Document ID: Attachment 2 <input type="checkbox"/> Previously Submitted, Date _____
3. Detailed Description of Control Equipment (Required for all permit applications, except Title V air operation permit revision applications if this information was submitted to the department within the previous five years and would not be altered as a result of the revision being sought) <input type="checkbox"/> Attached, Document ID: N/A Previously Submitted, Date _____
4. Procedures for Startup and Shutdown (Required for all operation permit applications, except Title V air operation permit revision applications if this information was submitted to the department within the previous five years and would not be altered as a result of the revision being sought) <input type="checkbox"/> Attached, Document ID: _____ <input type="checkbox"/> Previously Submitted, Date _____ <input checked="" type="checkbox"/> Not Applicable (construction application)
5. Operation and Maintenance Plan (Required for all permit applications, except Title V air operation permit revision applications if this information was submitted to the department within the previous five years and would not be altered as a result of the revision being sought) <input type="checkbox"/> Attached, Document ID: _____ <input type="checkbox"/> Previously Submitted, Date _____ <input checked="" type="checkbox"/> Not Applicable
6. Compliance Demonstration Reports/Records <input type="checkbox"/> Attached, Document ID: _____ Test Date(s)/Pollutant(s) Tested: _____ <input type="checkbox"/> Previously Submitted, Date: _____ Test Date(s)/Pollutant(s) Tested: _____ <input type="checkbox"/> To be Submitted, Date (if known): _____ Test Date(s)/Pollutant(s) Tested: _____ <input checked="" type="checkbox"/> Not Applicable Note: For FESOP applications, all required compliance demonstration records/reports must be submitted at the time of application. For Title V air operation permit applications, all required compliance demonstration reports/records must be submitted at the time of application, or a compliance plan must be submitted at the time of application.
7. Other Information Required by Rule or Statute <input type="checkbox"/> Attached, Document ID: _____ <input checked="" type="checkbox"/> Not Applicable

FACILITY INFORMATION

EMISSIONS UNIT INFORMATION

Section [5] of [6]

Additional Requirements for Air Construction Permit Applications

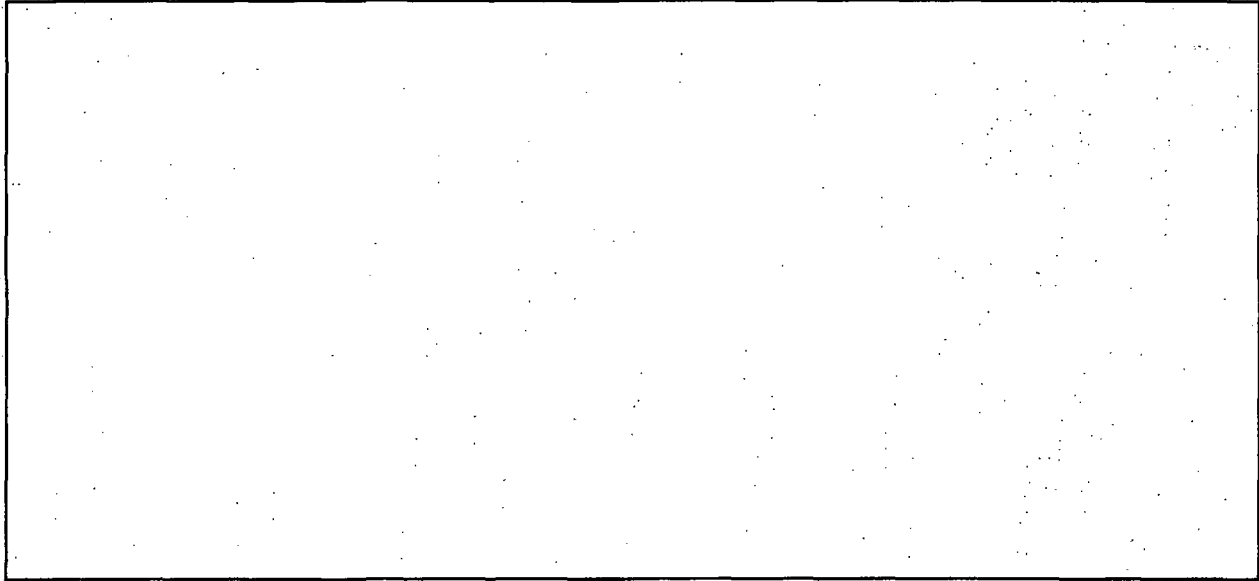
1. Control Technology Review and Analysis (Rules 62-212.400(10) and 62-212.500(7), F.A.C.; 40 CFR 63.43(d) and (e)) <input type="checkbox"/> Attached, Document ID: _____ <input checked="" type="checkbox"/> Not Applicable
2. Good Engineering Practice Stack Height Analysis (Rule 62-212.400(4)(d), F.A.C., and Rule 62-212.500(4)(f), F.A.C.) <input type="checkbox"/> Attached, Document ID: _____ <input checked="" type="checkbox"/> Not Applicable
3. Description of Stack Sampling Facilities (Required for proposed new stack sampling facilities only) <input type="checkbox"/> Attached, Document ID: _____ <input checked="" type="checkbox"/> Not Applicable

Additional Requirements for Title V Air Operation Permit Applications N/A

1. Identification of Applicable Requirements <input type="checkbox"/> Attached, Document ID: _____
2. Compliance Assurance Monitoring <input type="checkbox"/> Attached, Document ID: _____ <input type="checkbox"/> Not Applicable
3. Alternative Methods of Operation <input type="checkbox"/> Attached, Document ID: _____ <input type="checkbox"/> Not Applicable
4. Alternative Modes of Operation (Emissions Trading) <input type="checkbox"/> Attached, Document ID: _____ <input type="checkbox"/> Not Applicable
5. Acid Rain Part Application <input type="checkbox"/> Certificate of Representation (EPA Form No. 7610-1) <input type="checkbox"/> Copy Attached, Document ID: _____ <input type="checkbox"/> Acid Rain Part (Form No. 62-210.900(1)(a)) <input type="checkbox"/> Attached, Document ID: _____ <input type="checkbox"/> Previously Submitted, Date: _____ <input type="checkbox"/> Repowering Extension Plan (Form No. 62-210.900(1)(a)1.) <input type="checkbox"/> Attached, Document ID: _____ <input type="checkbox"/> Previously Submitted, Date: _____ <input type="checkbox"/> New Unit Exemption (Form No. 62-210.900(1)(a)2.) <input type="checkbox"/> Attached, Document ID: _____ <input type="checkbox"/> Previously Submitted, Date: _____ <input type="checkbox"/> Retired Unit Exemption (Form No. 62-210.900(1)(a)3.) <input type="checkbox"/> Attached, Document ID: _____ <input type="checkbox"/> Previously Submitted, Date: _____ <input type="checkbox"/> Phase II NOx Compliance Plan (Form No. 62-210.900(1)(a)4.) <input type="checkbox"/> Attached, Document ID: _____ <input type="checkbox"/> Previously Submitted, Date: _____ <input type="checkbox"/> Phase II NOx Averaging Plan (Form No. 62-210.900(1)(a)5.) <input type="checkbox"/> Attached, Document ID: _____ <input type="checkbox"/> Previously Submitted, Date: _____ <input type="checkbox"/> Not Applicable

FACILITY INFORMATION

Additional Requirements Comment



EMISSIONS UNIT INFORMATION

Section [6] of [6]

A. GENERAL EMISSIONS UNIT INFORMATION

Title V Air Operation Permit Emissions Unit Classification

1. Regulated or Unregulated Emissions Unit? (Check one, if applying for an initial, revised or renewal Title V air operation permit. Skip this item if applying for an air construction permit or FESOP only.)

The emissions unit addressed in this Emissions Unit Information Section is a regulated emissions unit.

The emissions unit addressed in this Emissions Unit Information Section is an unregulated emissions unit.

Emissions Unit Description and Status

1. Type of Emissions Unit Addressed in this Section: (Check one)

This Emissions Unit Information Section addresses, as a single emissions unit, a single process or production unit, or activity, which produces one or more air pollutants and which has at least one definable emission point (stack or vent).

This Emissions Unit Information Section addresses, as a single emissions unit, a group of process or production units and activities which has at least one definable emission point (stack or vent) but may also produce fugitive emissions.

This Emissions Unit Information Section addresses, as a single emissions unit, one or more process or production units and activities which produce fugitive emissions only.

2. Description of Emissions Unit Addressed in this Section:
Emergency Diesel Generator No. 3

3. Emissions Unit Identification Number: **006 (Emergency Generator No. 3)**

4. Emissions Unit Status Code: C	5. Commence Construction Date: N/A	6. Initial Startup Date: N/A	7. Emissions Unit Major Group SIC Code: 49	8. Acid Rain Unit? <input type="checkbox"/> Yes <input checked="" type="checkbox"/> No
--	--	--	--	--

9. Package Unit:
Manufacturer: _____ Model Number: _____

10. Generator Nameplate Rating: **0.5 MW**

11. Emissions Unit Comment:

EMISSIONS UNIT INFORMATION

Section [6] of [6]

Emissions Unit Control Equipment

1. Control Equipment/Method(s) Description:

2. Control Device or Method Code(s):

EMISSIONS UNIT INFORMATION

Section [6] of [6]

B. EMISSIONS UNIT CAPACITY INFORMATION

(Optional for unregulated emissions units.)

Emissions Unit Operating Capacity and Schedule

1. Maximum Process or Throughput Rate:
2. Maximum Production Rate:
3. Maximum Heat Input Rate: million Btu/hr
4. Maximum Incineration Rate: pounds/hr tons/day
5. Requested Maximum Operating Schedule: hours/day weeks/year days/week 500 hours/year
6. Operating Capacity/Schedule Comment:

EMISSIONS UNIT INFORMATION

Section [6] of [6]

C. EMISSION POINT (STACK/VENT) INFORMATION

(Optional for unregulated emissions units.)

Emission Point Description and Type

1. Identification of Point on Plot Plan or Flow Diagram: S6		2. Emission Point Type Code: 1	
3. Descriptions of Emission Points Comprising this Emissions Unit for VE Tracking: N/A			
4. ID Numbers or Descriptions of Emission Units with this Emission Point in Common: N/A			
5. Discharge Type Code: V	6. Stack Height: 110 feet	7. Exit Diameter: 2.0 feet	
8. Exit Temperature: 832 °F	9. Actual Volumetric Flow Rate: 4,000 acfm	10. Water Vapor: N/A %	
11. Maximum Dry Standard Flow Rate: N/A dscfm		12. Nonstack Emission Point Height: N/A feet	
13. Emission Point UTM Coordinates... Zone: East (km): North (km):		14. Emission Point Latitude/Longitude... Latitude (DD/MM/SS) Longitude (DD/MM/SS)	
15. Emission Point Comment:			

EMISSIONS UNIT INFORMATION

Section [6] of [6]

D. SEGMENT (PROCESS/FUEL) INFORMATION

Segment Description and Rate: Segment 1 of 1

1. Segment Description (Process/Fuel Type): Emergency generator fired with distillate fuel oil		
2. Source Classification Code (SCC): 2-01-001-02		3. SCC Units: Thousand Gallons Burned
4. Maximum Hourly Rate: 0.034	5. Maximum Annual Rate: 16.8	6. Estimated Annual Activity Factor:
7. Maximum % Sulfur: 0.05	8. Maximum % Ash: 0.01	9. Million Btu per SCC Unit: 140
10. Segment Comment: Fuel flow estimated based on engine rating of 670 hp and assumed heat rate of 7,000 Btu/hp-hr.		

Segment Description and Rate: Segment of

1. Segment Description (Process/Fuel Type):		
2. Source Classification Code (SCC):		3. SCC Units:
4. Maximum Hourly Rate:	5. Maximum Annual Rate:	6. Estimated Annual Activity Factor:
7. Maximum % Sulfur:	8. Maximum % Ash:	9. Million Btu per SCC Unit:
10. Segment Comment:		

EMISSIONS UNIT INFORMATION

Section [6] of [6]

E. EMISSIONS UNIT POLLUTANTS

List of Pollutants Emitted by Emissions Unit

1. Pollutant Emitted	2. Primary Control Device Code	3. Secondary Control Device Code	4. Pollutant Regulatory Code
NOX			EL
SO2			NS
PM/PM10			EL
CO			EL
VOC			EL

**F1. EMISSIONS UNIT POLLUTANT DETAIL INFORMATION –
POTENTIAL, FUGITIVE, AND ACTUAL EMISSIONS**

(Optional for unregulated emissions units.)

Potential, Estimated Fugitive, and Baseline & Projected Actual Emissions

Complete for each pollutant identified in Subsection E if applying for an air construction permit or concurrent processing of an air construction permit and a revised or renewal Title V permit. Complete for each emissions-limited pollutant identified in Subsection E if applying for an air operation permit.

1. Pollutant Emitted: NOX		2. Total Percent Efficiency of Control:	
3. Potential Emissions: 7.5 lb/hour 1.2 tons/year		4. Synthetically Limited? <input checked="" type="checkbox"/> Yes <input type="checkbox"/> No	
5. Range of Estimated Fugitive Emissions (as applicable): N/A to tons/year			
6. Emission Factor: 5.08 gm/hp-hr Reference: Vendor Data		7. Emissions Method Code: 5	
8.a. Baseline Actual Emissions (if required): tons/year		8.b. Baseline 24-month Period: From: To:	
9.a. Projected Actual Emissions (if required): tons/year		9.b. Projected Monitoring Period: <input type="checkbox"/> 5 years <input type="checkbox"/> 10 years	
10. Calculation of Emissions: See Appendix B Potential annual rate based on 500 hrs/yr of oil-firing.			
11. Potential, Fugitive, and Actual Emissions Comment:			

**F2. EMISSIONS UNIT POLLUTANT DETAIL INFORMATION -
 ALLOWABLE EMISSIONS**

Complete if the pollutant identified in Subsection F1 is or would be subject to a numerical emissions limitation.

Allowable Emissions Allowable Emissions 1 of 2

1. Basis for Allowable Emissions Code: ESCPSD	2. Future Effective Date of Allowable Emissions: N/A
3. Allowable Emissions and Units: N/A	4. Equivalent Allowable Emissions: 7.5 lb/hour 1.2 tons/year
5. Method of Compliance: Annual stack test using EPA Reference Methods 7, 7A, 7C, 7D, or 7E and monitoring of annual operating hours.	
6. Allowable Emissions Comment (Description of Operating Method):	

Allowable Emissions Allowable Emissions 2 of 2

1. Basis for Allowable Emissions Code: RULE	2. Future Effective Date of Allowable Emissions: N/A
3. Allowable Emissions and Units: NSPS Subpart III	4. Equivalent Allowable Emissions: N/A lb/hour N/A tons/year
5. Method of Compliance: Engine manufacturer certification per NSPS Subpart III.	
6. Allowable Emissions Comment (Description of Operating Method):	

**F1. EMISSIONS UNIT POLLUTANT DETAIL INFORMATION –
POTENTIAL, FUGITIVE, AND ACTUAL EMISSIONS**

(Optional for unregulated emissions units.)

Potential, Estimated Fugitive, and Baseline & Projected Actual Emissions

Complete for each pollutant identified in Subsection E if applying for an air construction permit or concurrent processing of an air construction permit and a revised or renewal Title V permit. Complete for each emissions-limited pollutant identified in Subsection E if applying for an air operation permit.

1. Pollutant Emitted: SO2		2. Total Percent Efficiency of Control:	
3. Potential Emissions: 0.3 lb/hour 0.07 tons/year		4. Synthetically Limited? <input checked="" type="checkbox"/> Yes <input type="checkbox"/> No	
5. Range of Estimated Fugitive Emissions (as applicable): N/A to tons/year			
6. Emission Factor: 0.18 gm/hp-hr Reference: AP-42		7. Emissions Method Code: 3	
8.a. Baseline Actual Emissions (if required): tons/year		8.b. Baseline 24-month Period: From: To:	
9.a. Projected Actual Emissions (if required): tons/year		9.b. Projected Monitoring Period: <input type="checkbox"/> 5 years <input type="checkbox"/> 10 years	
10. Calculation of Emissions: See Appendix B Potential annual rate based on 500 hrs/yr of oil-firing.			
11. Potential, Fugitive, and Actual Emissions Comment:			

**F2. EMISSIONS UNIT POLLUTANT DETAIL INFORMATION -
ALLOWABLE EMISSIONS**

Complete if the pollutant identified in Subsection F1 is or would be subject to a numerical emissions limitation.

Allowable Emissions Allowable Emissions of N/A

1. Basis for Allowable Emissions Code:	2. Future Effective Date of Allowable Emissions:
3. Allowable Emissions and Units:	4. Equivalent Allowable Emissions: lb/hour tons/year
5. Method of Compliance:	
6. Allowable Emissions Comment (Description of Operating Method):	

Allowable Emissions Allowable Emissions of

1. Basis for Allowable Emissions Code:	2. Future Effective Date of Allowable Emissions:
3. Allowable Emissions and Units:	4. Equivalent Allowable Emissions: lb/hour tons/year
5. Method of Compliance:	
6. Allowable Emissions Comment (Description of Operating Method):	

Allowable Emissions Allowable Emissions of

1. Basis for Allowable Emissions Code:	2. Future Effective Date of Allowable Emissions:
3. Allowable Emissions and Units:	4. Equivalent Allowable Emissions: lb/hour tons/year
5. Method of Compliance:	
6. Allowable Emissions Comment (Description of Operating Method):	

**F1. EMISSIONS UNIT POLLUTANT DETAIL INFORMATION –
POTENTIAL, FUGITIVE, AND ACTUAL EMISSIONS.**

(Optional for unregulated emissions units.)

Potential, Estimated Fugitive, and Baseline & Projected Actual Emissions

Complete for each pollutant identified in Subsection E if applying for an air construction permit or concurrent processing of an air construction permit and a revised or renewal Title V permit. Complete for each emissions-limited pollutant identified in Subsection E if applying for an air operation permit.

1. Pollutant Emitted: PM/PM10		2. Total Percent Efficiency of Control:	
3. Potential Emissions: 0.04 lb/hour 0.01 tons/year		4. Synthetically Limited? <input checked="" type="checkbox"/> Yes <input type="checkbox"/> No	
5. Range of Estimated Fugitive Emissions (as applicable): N/A to tons/year			
6. Emission Factor: 0.03 gm/hp-hr Reference: Vendor Data		7. Emissions Method Code: 5	
8.a. Baseline Actual Emissions (if required): tons/year		8.b. Baseline 24-month Period: From: To:	
9.a. Projected Actual Emissions (if required): tons/year		9.b. Projected Monitoring Period: <input type="checkbox"/> 5 years <input type="checkbox"/> 10 years	
10. Calculation of Emissions: See Appendix B Potential annual rate based on 500 hrs/yr of oil-firing.			
11. Potential, Fugitive, and Actual Emissions Comment:			

**F2. EMISSIONS UNIT POLLUTANT DETAIL INFORMATION -
 ALLOWABLE EMISSIONS**

Complete if the pollutant identified in Subsection F1 is or would be subject to a numerical emissions limitation.

Allowable Emissions Allowable Emissions 1 of 1

1. Basis for Allowable Emissions Code: RULE	2. Future Effective Date of Allowable Emissions: N/A
3. Allowable Emissions and Units: NSPS Subpart III	4. Equivalent Allowable Emissions: N/A lb/hour N/A tons/year
5. Method of Compliance: Engine manufacturer certification per NSPS Subpart III.	
6. Allowable Emissions Comment (Description of Operating Method):	

Allowable Emissions Allowable Emissions of

1. Basis for Allowable Emissions Code:	2. Future Effective Date of Allowable Emissions:
3. Allowable Emissions and Units:	4. Equivalent Allowable Emissions: lb/hour tons/year
5. Method of Compliance:	
6. Allowable Emissions Comment (Description of Operating Method):	

**F1. EMISSIONS UNIT POLLUTANT DETAIL INFORMATION -
POTENTIAL, FUGITIVE, AND ACTUAL EMISSIONS**

(Optional for unregulated emissions units.)

Potential, Estimated Fugitive, and Baseline & Projected Actual Emissions

Complete for each pollutant identified in Subsection E if applying for an air construction permit or concurrent processing of an air construction permit and a revised or renewal Title V permit. Complete for each emissions-limited pollutant identified in Subsection E if applying for an air operation permit.

1. Pollutant Emitted: CO		2. Total Percent Efficiency of Control:	
3. Potential Emissions: 0.3 lb/hour 0.08 tons/year		4. Synthetically Limited? <input checked="" type="checkbox"/> Yes <input type="checkbox"/> No	
5. Range of Estimated Fugitive Emissions (as applicable): N/A to tons/year			
6. Emission Factor: 0.22 gm/hp-hr Reference: Vendor Data		7. Emissions Method Code: 5	
8.a. Baseline Actual Emissions (if required): tons/year		8.b. Baseline 24-month Period: From: To:	
9.a. Projected Actual Emissions (if required): tons/year		9.b. Projected Monitoring Period: <input type="checkbox"/> 5 years <input type="checkbox"/> 10 years	
10. Calculation of Emissions: See Appendix B Potential annual rate based on 500 hrs/yr of oil-firing.			
11. Potential, Fugitive, and Actual Emissions Comment:			

**F2. EMISSIONS UNIT POLLUTANT DETAIL INFORMATION -
 ALLOWABLE EMISSIONS**

Complete if the pollutant identified in Subsection F1 is or would be subject to a numerical emissions limitation.

Allowable Emissions Allowable Emissions 1 of 1

1. Basis for Allowable Emissions Code: RULE	2. Future Effective Date of Allowable Emissions: N/A
3. Allowable Emissions and Units: NSPS Subpart IIII	4. Equivalent Allowable Emissions: N/A lb/hour N/A tons/year
5. Method of Compliance: Engine manufacturer certification per NSPS Subpart IIII.	
6. Allowable Emissions Comment (Description of Operating Method):	

Allowable Emissions Allowable Emissions of

1. Basis for Allowable Emissions Code:	2. Future Effective Date of Allowable Emissions:
3. Allowable Emissions and Units:	4. Equivalent Allowable Emissions: lb/hour tons/year
5. Method of Compliance:	
6. Allowable Emissions Comment (Description of Operating Method):	

**F1. EMISSIONS UNIT POLLUTANT DETAIL INFORMATION –
POTENTIAL, FUGITIVE, AND ACTUAL EMISSIONS**

(Optional for unregulated emissions units.)

Potential, Estimated Fugitive, and Baseline & Projected Actual Emissions

Complete for each pollutant identified in Subsection E if applying for an air construction permit or concurrent processing of an air construction permit and a revised or renewal Title V permit. Complete for each emissions-limited pollutant identified in Subsection E if applying for an air operation permit.

1. Pollutant Emitted: VOC		2. Total Percent Efficiency of Control:	
3. Potential Emissions: 0.01 lb/hour 0.004 tons/year		4. Synthetically Limited? <input checked="" type="checkbox"/> Yes <input type="checkbox"/> No	
5. Range of Estimated Fugitive Emissions (as applicable): N/A to tons/year			
6. Emission Factor: 0.01 gm/hp-hr Reference: Vendor Data		7. Emissions Method Code: 5	
8.a. Baseline Actual Emissions (if required): tons/year		8.b. Baseline 24-month Period: From: To:	
9.a. Projected Actual Emissions (if required): tons/year		9.b. Projected Monitoring Period: <input type="checkbox"/> 5 years <input type="checkbox"/> 10 years	
10. Calculation of Emissions: See Appendix B Potential annual rate based on 500 hrs/yr of oil-firing.			
11. Potential, Fugitive, and Actual Emissions Comment:			

**F2. EMISSIONS UNIT POLLUTANT DETAIL INFORMATION -
ALLOWABLE EMISSIONS**

Complete if the pollutant identified in Subsection F1 is or would be subject to a numerical emissions limitation.

Allowable Emissions Allowable Emissions **1** of **1**

1. Basis for Allowable Emissions Code: RULE	2. Future Effective Date of Allowable Emissions: N/A
3. Allowable Emissions and Units: NSPS Subpart IIII	4. Equivalent Allowable Emissions: N/A lb/hour N/A tons/year
5. Method of Compliance: Engine manufacturer certification per NSPS Subpart IIII.	
6. Allowable Emissions Comment (Description of Operating Method):	

Allowable Emissions Allowable Emissions of

1. Basis for Allowable Emissions Code:	2. Future Effective Date of Allowable Emissions:
3. Allowable Emissions and Units:	4. Equivalent Allowable Emissions: lb/hour tons/year
5. Method of Compliance:	
6. Allowable Emissions Comment (Description of Operating Method):	

EMISSIONS UNIT INFORMATION

Section [6] of [6]

G. VISIBLE EMISSIONS INFORMATION

Complete if this emissions unit is or would be subject to a unit-specific visible emissions limitation.

Visible Emissions Limitation: Visible Emissions Limitation 1 of 2

1. Visible Emissions Subtype: VE20	2. Basis for Allowable Opacity: <input checked="" type="checkbox"/> Rule <input type="checkbox"/> Other
3. Allowable Opacity: Normal Conditions: 20 % Exceptional Conditions: % Maximum Period of Excess Opacity Allowed: min/hour	
4. Method of Compliance: EPA Reference Method 9	
5. Visible Emissions Comment: Rule 62-296.320(4)(b), F.A.C.	

Visible Emissions Limitation: Visible Emissions Limitation 2 of 2

1. Visible Emissions Subtype: VE99	2. Basis for Allowable Opacity: <input checked="" type="checkbox"/> Rule <input type="checkbox"/> Other
3. Allowable Opacity: Normal Conditions: % Exceptional Conditions: % Maximum Period of Excess Opacity Allowed: min/hour	
4. Method of Compliance: EPA Reference Method 9	
5. Visible Emissions Comment: Rule 62-210.700(1), F.A.C. allows excess emissions for up to 2 hours in any 24-hour period.	

EMISSIONS UNIT INFORMATION
Section [6] of [6]

H. CONTINUOUS MONITOR INFORMATION

Complete if this emissions unit is or would be subject to continuous monitoring.

Continuous Monitoring System: Continuous Monitor of N/A

1. Parameter Code:	2. Pollutant(s):
3. CMS Requirement:	<input type="checkbox"/> Rule <input type="checkbox"/> Other
4. Monitor Information... Manufacturer: Model Number: Serial Number:	
5. Installation Date:	6. Performance Specification Test Date:
7. Continuous Monitor Comment:	

Continuous Monitoring System: Continuous Monitor of

1. Parameter Code:	2. Pollutant(s):
3. CMS Requirement:	<input type="checkbox"/> Rule <input type="checkbox"/> Other
4. Monitor Information... Manufacturer: Model Number: Serial Number:	
5. Installation Date:	6. Performance Specification Test Date:
7. Continuous Monitor Comment:	

EMISSIONS UNIT INFORMATION
Section [6] of [6]

I. EMISSIONS UNIT ADDITIONAL INFORMATION

Additional Requirements for All Applications, Except as Otherwise Stated

1. Process Flow Diagram (Required for all permit applications, except Title V air operation permit revision applications if this information was submitted to the department within the previous five years and would not be altered as a result of the revision being sought) <input checked="" type="checkbox"/> Attached, Document ID: Figure 2-3 <input type="checkbox"/> Previously Submitted, Date _____
2. Fuel Analysis or Specification (Required for all permit applications, except Title V air operation permit revision applications if this information was submitted to the department within the previous five years and would not be altered as a result of the revision being sought) <input checked="" type="checkbox"/> Attached, Document ID: Attachment 2 <input type="checkbox"/> Previously Submitted, Date _____
3. Detailed Description of Control Equipment (Required for all permit applications, except Title V air operation permit revision applications if this information was submitted to the department within the previous five years and would not be altered as a result of the revision being sought) <input type="checkbox"/> Attached, Document ID: N/A <input type="checkbox"/> Previously Submitted, Date _____
4. Procedures for Startup and Shutdown (Required for all operation permit applications, except Title V air operation permit revision applications if this information was submitted to the department within the previous five years and would not be altered as a result of the revision being sought) <input type="checkbox"/> Attached, Document ID: _____ <input type="checkbox"/> Previously Submitted, Date _____ <input checked="" type="checkbox"/> Not Applicable (construction application)
5. Operation and Maintenance Plan (Required for all permit applications, except Title V air operation permit revision applications if this information was submitted to the department within the previous five years and would not be altered as a result of the revision being sought) <input type="checkbox"/> Attached, Document ID: _____ <input type="checkbox"/> Previously Submitted, Date _____ <input checked="" type="checkbox"/> Not Applicable
6. Compliance Demonstration Reports/Records <input type="checkbox"/> Attached, Document ID: _____ Test Date(s)/Pollutant(s) Tested: _____ <input type="checkbox"/> Previously Submitted, Date: _____ Test Date(s)/Pollutant(s) Tested: _____ <input type="checkbox"/> To be Submitted, Date (if known): _____ Test Date(s)/Pollutant(s) Tested: _____ <input checked="" type="checkbox"/> Not Applicable Note: For FESOP applications, all required compliance demonstration records/reports must be submitted at the time of application. For Title V air operation permit applications, all required compliance demonstration reports/records must be submitted at the time of application, or a compliance plan must be submitted at the time of application.
7. Other Information Required by Rule or Statute <input type="checkbox"/> Attached, Document ID: _____ <input checked="" type="checkbox"/> Not Applicable

EMISSIONS UNIT INFORMATION
Section [6] of [6]

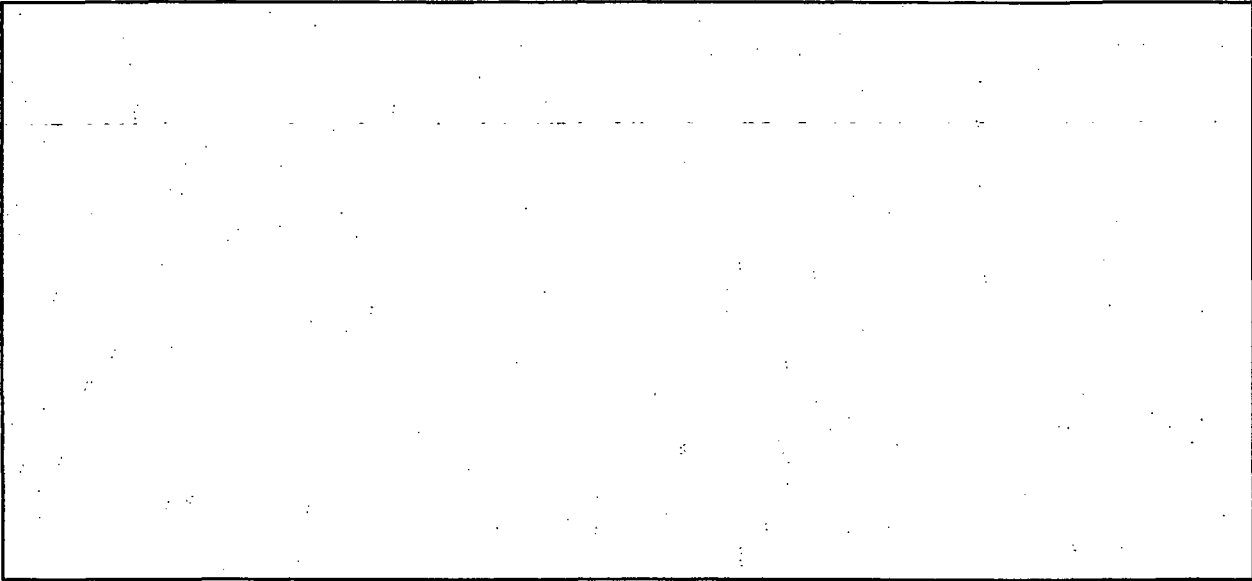
Additional Requirements for Air Construction Permit Applications

1. Control Technology Review and Analysis (Rules 62-212.400(10) and 62-212.500(7), F.A.C.; 40 CFR 63.43(d) and (e)) <input type="checkbox"/> Attached, Document ID: _____ <input checked="" type="checkbox"/> Not Applicable
2. Good Engineering Practice Stack Height Analysis (Rule 62-212.400(4)(d), F.A.C., and Rule 62-212.500(4)(f), F.A.C.) <input type="checkbox"/> Attached, Document ID: _____ <input checked="" type="checkbox"/> Not Applicable
3. Description of Stack Sampling Facilities (Required for proposed new stack sampling facilities only) <input type="checkbox"/> Attached, Document ID: _____ <input checked="" type="checkbox"/> Not Applicable

Additional Requirements for Title V Air Operation Permit Applications N/A

1. Identification of Applicable Requirements <input type="checkbox"/> Attached, Document ID: _____
2. Compliance Assurance Monitoring <input type="checkbox"/> Attached, Document ID: _____ <input type="checkbox"/> Not Applicable
3. Alternative Methods of Operation <input type="checkbox"/> Attached, Document ID: _____ <input type="checkbox"/> Not Applicable
4. Alternative Modes of Operation (Emissions Trading) <input type="checkbox"/> Attached, Document ID: _____ <input type="checkbox"/> Not Applicable
5. Acid Rain Part Application <input type="checkbox"/> Certificate of Representation (EPA Form No. 7610-1) <input type="checkbox"/> Copy Attached, Document ID: _____ <input type="checkbox"/> Acid Rain Part (Form No. 62-210.900(1)(a)) <input type="checkbox"/> Attached, Document ID: _____ <input type="checkbox"/> Previously Submitted, Date: _____ <input type="checkbox"/> Repowering Extension Plan (Form No. 62-210.900(1)(a)1.) <input type="checkbox"/> Attached, Document ID: _____ <input type="checkbox"/> Previously Submitted, Date: _____ <input type="checkbox"/> New Unit Exemption (Form No. 62-210.900(1)(a)2.) <input type="checkbox"/> Attached, Document ID: _____ <input type="checkbox"/> Previously Submitted, Date: _____ <input type="checkbox"/> Retired Unit Exemption (Form No. 62-210.900(1)(a)3.) <input type="checkbox"/> Attached, Document ID: _____ <input type="checkbox"/> Previously Submitted, Date: _____ <input type="checkbox"/> Phase II NOx Compliance Plan (Form No. 62-210.900(1)(a)4.) <input type="checkbox"/> Attached, Document ID: _____ <input type="checkbox"/> Previously Submitted, Date: _____ <input type="checkbox"/> Phase II NOx Averaging Plan (Form No. 62-210.900(1)(a)5.) <input type="checkbox"/> Attached, Document ID: _____ <input type="checkbox"/> Previously Submitted, Date: _____ <input type="checkbox"/> Not Applicable

Additional Requirements Comment



ATTACHMENT 1

**PRECAUTIONS TO PREVENT EMISSIONS
OF UNCONFINED PARTICULATE MATTER**

PRECAUTIONS TO PREVENT EMISSIONS OF UNCONFINED PARTICULATE MATTER

Unconfined particulate matter emissions that may result from operations include:

- Vehicular traffic on paved and unpaved roads.
- Wind-blown dust from yard areas.
- Periodic abrasive blasting.

The following techniques will be used to prevent unconfined particulate matter emissions on an as needed basis:

- Chemical or water application to:
 - Unpaved roads
 - Unpaved yard areas
- Paving and maintenance of roads, parking areas and yards.
- Landscaping or planting of vegetation.
- Confining abrasive blasting where possible.
- Other techniques, as necessary

ATTACHMENT 2
FUEL CHARACTERISTICS

Fuel Specifications

Parameter	Units	Distillate Fuel Oil			Natural Gas		
		Max	Avg	Min	Max	Avg	Min
Heat Content, HHV	Btu/gal		140000		N/A	N/A	N/A
	Btu/ft ³	N/A	N/A	N/A		1050	
Heat Content, LHV	Btu/gal				N/A	N/A	N/A
	Btu/ft ³	N/A	N/A	N/A			
Sulfur Content	wt %		0.05			Pipeline quality	
Ash Content	wt %		negligible			negligible	
Density (@ 60°F)	lb/gal		7.05		N/A	N/A	N/A
	lb/ft ³	N/A	N/A	N/A		1 lb/23.8 ft3	

Source: Burns & McDonnell, 2007.

APPENDIX B
EMISSION RATE ESTIMATES

Equipment Type	Phase I Quantity	Phase II Quantity	Phase I&II Quantity	PM10/PM tpy	CO tpy	NOx tpy	SO2 tpy	Lead tpy	VOC tpy
Generator & HRSG	1	1	2	11.19	20.15	30.06	1.81	0.00	1.99
Startup emissions	1	1	2	0.01	0.02	0.03	0.0021	8.57E-08	0.0023
Auxiliary Boiler	1	-	1	1.35	13.32	6.81	1.32	1.58E-04	0.87
Startup emissions	1	-	1	0.01	0.03	0.05	0.02	2.63E-06	0.00
Large Diesel	1	1	2	0.15	1.26	12.51	0.31	-	0.05
Small Diesel	1	-	1	0.01	0.08	1.88	0.07	-	0.00
Cooling Tower	2	1	3	0.13	-	-	-	-	-
Phase I tpy				13.00	34.87	51.34	3.53	2.36E-04	2.91
Phase II tpy				11.49	21.44	42.60	2.12	0.00	2.04
Phase I&II tpy				24.49	56.30	93.94	5.65	0.00	4.95
Threshold (tpy)				100.00	100.00	100.00	100.00	0.60	100.00

Stack ID	Emission Point	Natural Gas	Fuel Oil	Hrs/yr	lb/MMBtu					Emission Factor	
		MMBtu/hr	gal/hr		PM10/PM	CO	NOx	SO2	Lead	VOC	Reference
1a	Turbine Generator #1	40.10		8,760	0.057	0.043	0.074	0.0054	-	0.007	Vendor Data (6 ppm NOx)
2a	Turbine Generator #2	40.10		8,760	0.057	0.043	0.074	0.0054	-	0.007	Vendor Data (6 ppm NOx)
1b	Fired HRSG #1	36.00		8,760	0.01	0.08	0.11	0.0054	4.76E-07	0.005	Vendor Data (9.6 ppm NOx)
2b	Fired HRSG #2	36.00		8,760	0.01	0.08	0.11	0.0054	4.76E-07	0.005	Vendor Data (9.6 ppm NOx)
3	Auxiliary Boiler #1	38.00		8,760	0.01	0.08	0.035	0.0054	4.76E-07	0.005	AP-42, 1.4 (7/98) NOx = 20 ppm per Cleaver Brooks
			263.89	500	0.02	0.04	0.14	0.05	9.00E-06	0.0014	AP-42, 1.3 (9/98)
4	2.25 MW Emergency Diesel #1		HP		gm/hp hr					Vendor Data	
			3,017.30	500	0.09	0.76	7.52	0.18	-	0.03	(except SO2 from AP-42 3.4, 10/96)
5	2.25 MW Emergency Diesel #2		3,017.30	500	0.09	0.76	7.52	0.18	-	0.03	
6	500 KW Emergency Diesel #3		670.00	500	0.03	0.22	5.08	0.18	-	0.01	

Each Cooling Tower	
Tower Circulation Rate (gpm)=	3,600
Tower Drift Efficiency =	0.001%
Water loss due to drift (gal/min) =	0.04
Total Dissolved Solids (ppm) =	1,700
Water density (lb/gal) =	8.34
Pounds of water lost due to drift (lb/min) =	0.30
pounds solids per pound water =	0.0017
hours per year =	8,760.00
tpy =	0.13

Heating value of #2 (MMBtu/Mgal)	140.00
Heating value of NG (MMBtu/MMcf)	1,050.00
Sulfur Content of Fuel Oil (%)	0.05

Stack ID	lb/hr					
	PM10/PM	CO	NOx	SO2	Lead	VOC
1a, 1b	2.55	4.60	6.86	0.41	0.00	0.45
2a, 2b	2.55	4.60	6.86	0.41	0.00	0.45
3 (Natural Gas)	0.28	3.04	1.33	0.21	1.81E-05	0.20
3 (Fuel Oil)	0.87	1.32	5.28	1.87	3.33E-04	0.05
4	0.62	5.06	50.02	1.22	-	0.20
5	0.62	5.06	50.02	1.22	-	0.20
6	0.04	0.32	7.50	0.27	-	0.01
	7.54	24.00	127.88	5.62	3.85E-04	1.57

Stack ID	tpy					
	PM10/PM	CO	NOx	SO2	Lead	VOC
3 (NG only)	1.20	13.32	5.83	0.91	7.93E-05	0.87
3 (NG/Fuel Oil)	1.35	13.32	6.81	1.32	1.58E-04	0.84
1a, 1b	11.19	20.15	30.06	1.81	0.00	1.99
2a, 2b	11.19	20.15	30.06	1.81	0.00	1.99
3 (worst case)	1.35	13.32	6.81	1.32	1.58E-04	0.87
4	0.15	1.26	12.51	0.31	-	0.05
5	0.15	1.26	12.51	0.31	-	0.05
6	0.01	0.08	1.88	0.07	-	0.004

Notes:

1. CT/HRSG startup emissions estimated based on 5 min/startup, 60 startups/yr, and double the normal operation emission rates.
2. Auxiliary boiler startup emissions based on 15 min/startup, 15 startups/year for each fuel type, and double the normal operation emission rates.
3. SO2 emissions for natural gas combustion based on 2.0 grains S / 100 scf of natural gas.

Source: Burns & McDonnell, 2007.