

**NONMETALLIC MINERAL PROCESSING PLANT (CRUSHER)
AIR GENERAL PERMIT EXAMPLE REGISTRATION WORKSHEET**

7775491-002

Facility Identification Number - If known (seven digit number)

7775491

RECEIVED

JAN 17 2013

Registration Type

Check one:

**DIVISION OF AIR
RESOURCE MANAGEMENT**

INITIAL REGISTRATION - Notification of intent to:

- Construct and operate a proposed new facility.
- Operate an existing permitted facility not currently using an air general permit (e.g., a facility proposing to go from an air operation permit to an air general permit). If the facility currently holds one or more air operation permits, such permit(s) must be surrendered by the owner or operator upon the effective date of this air general permit. (See "Surrender of Existing Air Operation Permit(s)" below.)
- Operates an existing facility not currently permitted or using an air general permit.

RE-REGISTRATION (for facilities currently using an air general permit) - Notification of intent to:

- Continue operating the facility after expiration of the current term of air general permit use.
- Continue operating the facility after a change of ownership.
- Make an equipment change requiring re-registration pursuant to Rule 62-210.310(2)(e), F.A.C.
- Any other change not considered an administrative correction under Rule 62-210.310(2)(d), F.A.C.

Surrender of Existing Air Operation Permit(s) - For Initial Registrations Only, if Applicable

All existing air operation permits for this facility are hereby surrendered upon the effective date of this air general permit; specifically permit number(s):

General Facility Information

Facility Owner/Company Name (Name of corporation, agency, or individual owner who or which owns, leases, operates, controls, or supervises the facility.)
Anderson Columbia Co., Inc.

Site Name (Name, if any, of the facility site; e.g., Plant A, Metropolis Plant, etc. If more than one facility is owned, a complete registration must be submitted for each.)
Trio Crusher #2

Facility Location (Physical location of the facility, not necessarily the mailing address.)

Street Address: 800 NW 22nd Street

City: Ocala

County: Marion

Zip Code: 34475

Facility Start-Up Date (Estimated start-up date of proposed new facility.)(N/A for existing facility.)

NA

Facility Contact

Name and Position Title (Plant manager or person to be contacted regarding day-to-day operations at the facility.)
Print Name and Title: Doug Booth, Regional Manager, Anderson Columbia

Facility Contact Telephone Numbers

Telephone: ~~386~~³⁵² 351-3334 Fax: _____
Cell phone: 386-623-3515
E-mail: Doug.Booth@andersoncolumbia.com

Facility Contact Mailing Address

Organization/Firm: Anderson Columbia Co., Inc. (Attn: Mr. Scott Cleveland)
Mailing Address: P.O. Box 1829
City: Lake City County: Florida Zip Code: 32056

Correspondence Contact/Representative (to serve as additional Department contact)

Name and Position Title
Print Name and Title: Scott Cleveland / Environmental Manager

Correspondence Contact/Representative Telephone Numbers

Telephone: 386-752-7585 Fax: _____
Cell phone: 386-623-2126
E-mail: scottc@andersoncolumbia.com

Correspondence Contact/Representative Mailing Address

Organization/Firm: Anderson Columbia Co., Inc.
Mailing Address: P.O. Box 1829
City: Lake City County: Columbia Zip Code: 32056

Government Facility Code (check only one)

- Facility not owned or operated by a federal, state, or local government.
- Facility owned or operated by the federal government.
- Facility owned or operated by the state.
- Facility owned or operated by the county.
- Facility owned or operated by the municipality.
- Facility owned or operated by a water management district.

Description of Facility

Below, or as an attachment to this worksheet, provide a description of the nonmetallic mineral processing plant operations at the facility in sufficient detail to demonstrate the facility's eligibility for use of this air general permit and to provide a basis for tracking any future equipment or process changes at the facility. Describe material(s) processed, all air pollutant-emitting processes, and identify any air pollution control measures used. Mobile source equipment information is not needed (eg.: trucks, bulldozers, front-end loaders, etc.)

Spec sheet for portable crusher is attached. This crusher is used to process RAP (recycled asphalt product) that is brought to our asphalt plants from milling operations on asphalt roads. The crusher sizes the RAP for reuse in asphalt mixes. Common air emission controls are utilized (i.e. spray bars at emission points and road wetting, when needed).

This portable crusher is mobilized to various Anderson Columbia asphalt plants in the NE DEP district as the need arises (only after proper notification).

Helpful Definitions:

“Capacity” – Per 40 CFR 60.671, the cumulative rated capacity of all initial crushers that are part of the plant.

“Department” or “DEP” - The State of Florida Department of Environmental Protection.

“Emissions Unit” - Any part or activity of a facility that emits or has the potential to emit any air pollutant.

“Facility” - All of the emissions units which are located on one or more contiguous or adjacent properties, and which are under the control of the same person (or persons under common control).

“Owner” or “Operator” - Any person or entity who or which owns, leases, operates, controls or supervises an emissions unit or facility.

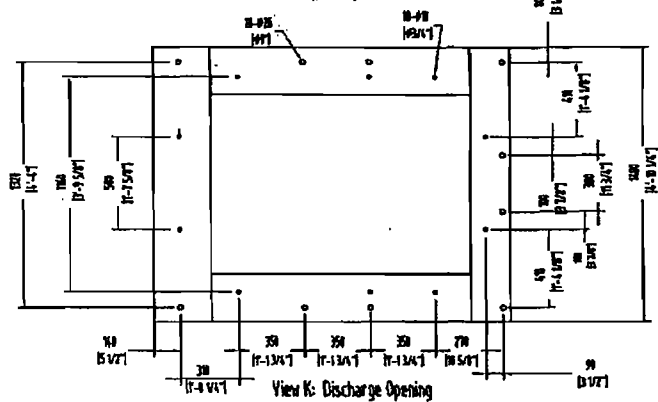
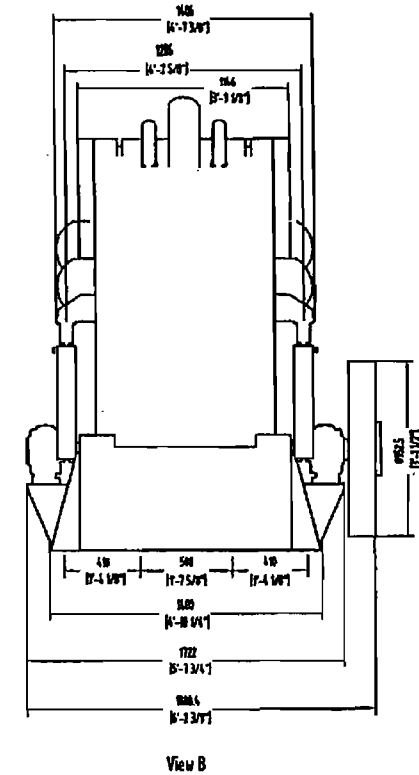
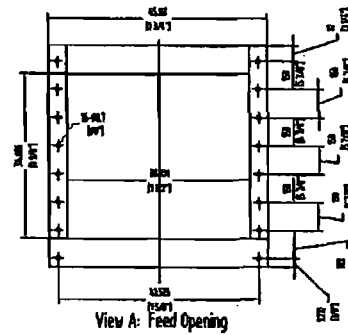
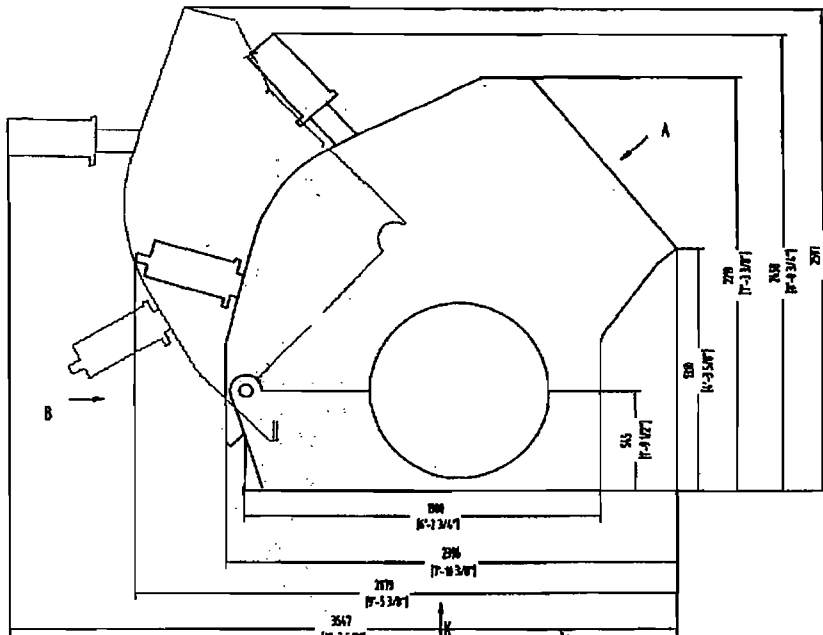
“Nonmetallic Mineral Processing Plant” – Per 40 CFR 60.671, any combination of equipment that is used to crush or grind any nonmetallic mineral wherever located, including lime plants, power plants, steel mills, asphalt concrete plants, portland cement plants or any other facility processing nonmetallic minerals except as provided in 40 CFR §60.670 (b) and (c).

“Relocatable Facility” - A facility such as, but not limited to, an asphalt plant, portable power generator, or relocatable nonmetallic mineral processing plant, which is designed to be physically moved to, and operated on, different sites by being wholly or partially dismantled and re-erected in essentially the same configuration. It shall not be operable while in transit.

“Screening Operation” – Per 40 CFR 60.671, a device for separating material according to size by passing undersize material through one or more mesh surfaces (screens) in series and retaining oversize material on the mesh surfaces (screens). Grizzly feeders associated with truck dumping and static (non-moving) grizzlies used anywhere in the nonmetallic mineral processing plant are not considered to be screening operations.

“Size” – Per 40 CFR 60.671, the rated capacity in tons per hour of a crusher, grinding mill, bucket elevator, bagging operation, or enclosed truck or railcar loading station; the total surface area of the top screen of a screening operation; the width of a conveyor belt; and the rated capacity in tons of a storage bin.

“Unconfined Emissions” - Emissions which escape and become airborne from unenclosed operations or which are emitted into the atmosphere without being conducted through a stack.



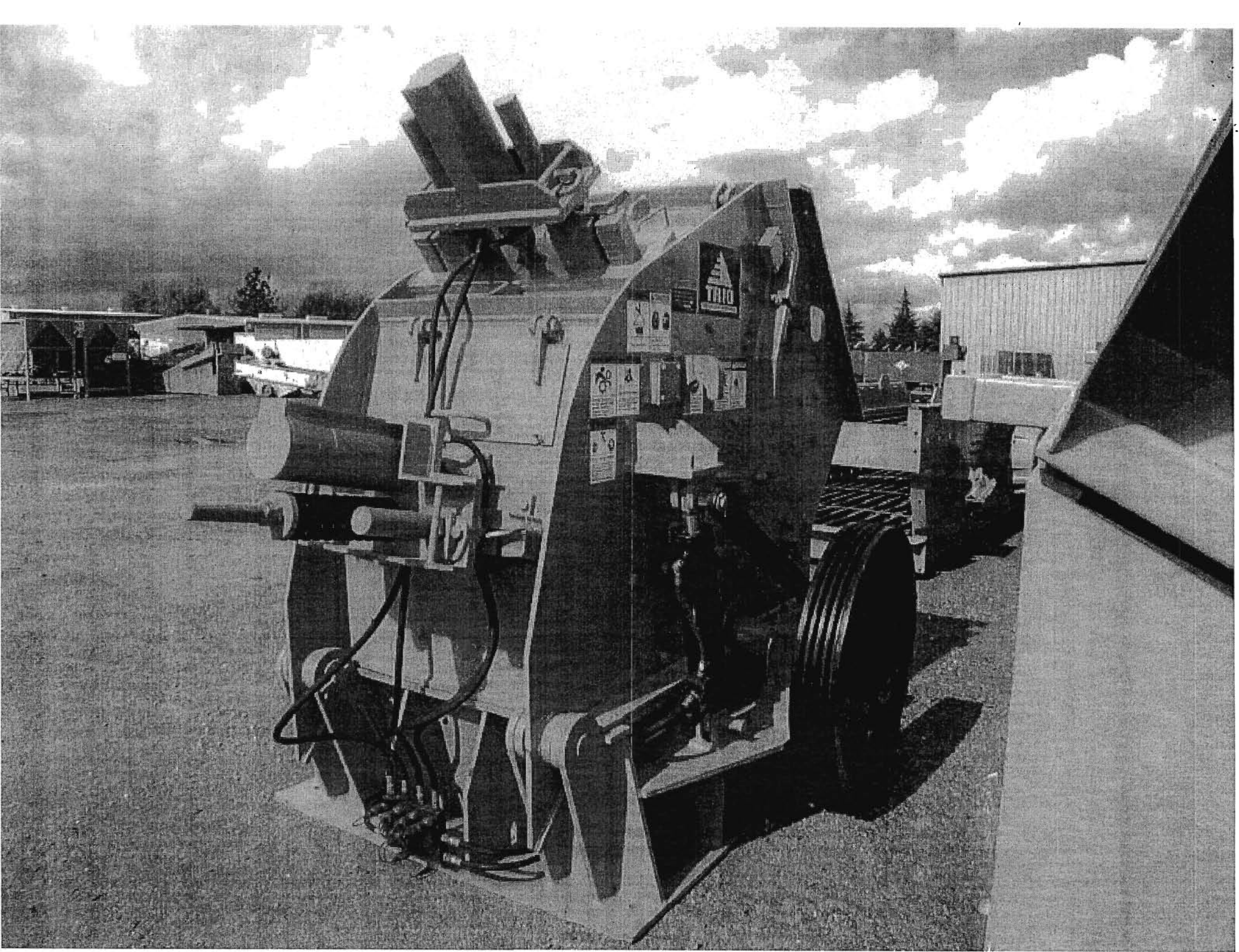
Specifications	1	Power Required	100 to 150 HP	6	Weight (3 Row)	20,750 Lbs
	2	Motor Pulley OD	/	7	Weight (4 Row)	21,400 Lbs
	3	V-Belt	8-5V			
	4	Operating Speed	450-650 RPM			
	5	Feed. Opening	32"X34"			
LAST UPDATE		10/16/15	REMARKS			

TRIO ASSUMES NO RESPONSIBILITY FOR THE DESIGN OR OPERATION OF ANY STRUCTURES OR MATERIALS SHOWN ON THIS DRAWING BUT NOT FURNISHED BY TRIO UNDER THE CONTRACT TO WHICH THIS DRAWING APPLIES. THIS INFORMATION SHALL REMAIN CONFIDENTIAL AND IS THE PROPERTY OF TRIO PRODUCTS. IT IS NOT TO BE DISCLOSED TO OTHERS, REPRODUCED, OR USED FOR ANY PURPOSE, EXCEPT AS AUTHORIZED IN WRITING BY TRIO. THIS INFORMATION MUST BE RETURNED TO TRIO ON DEMAND.

MODEL NO.
APS4034 IMPACT CRUSHER

TRIO ENGINEERED PRODUCTS

CRUSHING, WASHING & VIBRATING EQUIPMENT
IRVINDALE, CA



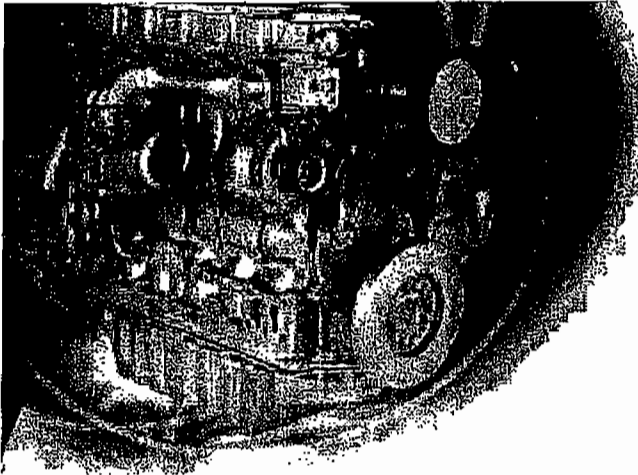
TRIO ENGINEERED PRODUCTS
APS SERIES IMPACT CRUSHER

SERIAL #: APS4034- [REDACTED]

DATE:

[REDACTED] 2007

MADE IN CHINA



 **Perkins®**

1100 Series Industrial Open Power Unit 1106D-E66TA

168 kW (225 hp) @ 2200 rev/min

Compliant to Tier 3 / Stage IIIA emissions, the 1106D-E66TA is the latest addition to the common platform concept of 1100 Series diesel engines.

Assembled on a new high technology production line, this ultra clean engine will provide a superior replacement for the 1106C-E66TA Tier 2 / Stage II engine. Frequent computerised checks during the production process ensure high build quality excellence is maintained.

The new engine boasts considerable increases in delivered power, torque and noise reduction. These have been achieved through changes to the manifold and combustion areas; turbocharger geometry; increased cylinder displacement and significantly, the inclusion of a high pressure common rail fuel system. This new engine incorporates components of Caterpillar ACERT™ technology.

Perkins new 1106D-E66TA IOPU range has a complete fuel system, air cleaner and radiator supplied as standard. Choice is provided to customers through the availability of a large variety of standard specifications. Incorporating a choice of fan, alternator, front PTO and air compressor.

Powered by your needs

The Perkins 1106D-E66TA IOPU range offers a choice of ratings and standard build configurations to match the power needs of customers for a diverse range of applications.

State of the art design

The Perkins 1106D utilises components of Caterpillar ACERT™ technology. This provides excellent fuel economy and low heat rejection.

Worldwide power solution

The 1106D has been designed to be worldwide fuel tolerant, including kerosene, jet aviation fuel and 5% biofuel (RME). Options are available to meet local market needs.

World class product support

At Perkins we are constantly researching, developing and investing in our products and services. Total worldwide support is provided through a network of 4000 distributors and service outlets, providing access to over 50,000 parts and exchange units 24 hours a day, 365 days a year. This support is enhanced by TIPSS (The Integrated Parts and Service System). TIPSS enables customers to electronically specify and order parts as well as service 1106D engines with online guides and service tools.

Lower operating costs

The 1106D maintains Tier 2 / Stage II fuel economy. Service intervals are set at 500 hours as standard and Perkins provides comprehensive warranty cover for 2 years (up to 3000 hours), with 3 years on major engine components. Low usage warranty package is also available.

Long term power solution

The 1106D IOPU range has been designed to fully comply with stringent EPA Tier 3 / EU Stage IIIA emissions regulations for mobile applications, providing an emissions compliant power solution going forward.

1100 Series 1106D-E66TA

Engine Specification

Air Inlet

Mounted air filter and turbocharger

Cooling System

Fan (pusher or puller)

Fan drive

Radiator

Water pump

Electric Equipment

Alternator (12V or 24V)

Starter motor (12V or 24V)

Flywheel and Housing

Flywheel

SAE2 flywheel housing

Fuel System

Fuel cooler

Fuel filter

Literature

User's Handbook

Lubrication System

Oil cooler and filter

Timing case oil filler

Mountings

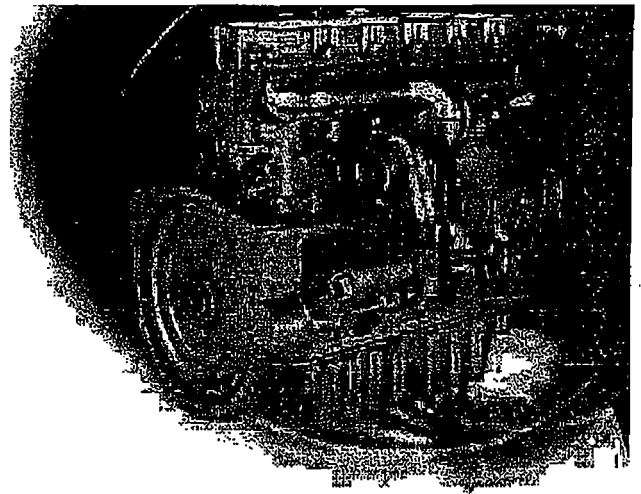
Engine mounting brackets

PTO

SAEA or SAEB front PTO (142/280 Nm)

Start Aids

Glow plugs



General Data

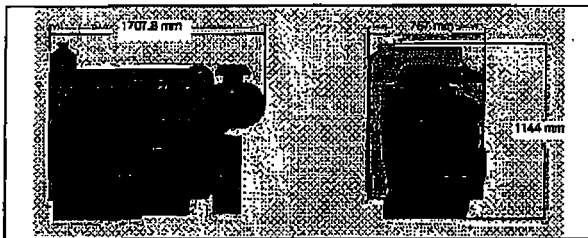
Number of cylinders	Vertical in-line 6 cylinder
Bore and stroke	105 mm x 127 mm
Displacement	6.6 litres
Aspiration	Turbocharged air-to-air aftercooling
Cycle	4 stroke
Combustion system	Direct injection
Compression ratio	16.2:1
Rotation	Anti-clockwise viewed on flywheel
Cooling system	Water
Length	1707.8 mm
Width	787 mm
Height	1144 mm
Dry weight	709 kg
Wet weight	752 kg

Height is above mounting feet. Length includes a fitted air cleaner
Final weight and dimensions will depend on completed specification

IOPU Options

The 1106D-E66TA IOPU range offers a wide choice of standard build specifications to meet specific customer needs:

- 12 or 24 Volt alternator
- Pusher or puller fan
- SAEA or SAEB front PTO
SAEB provides 83 kW/85 hp
- Air compressor



*Intermittent service: maximum power and/or speed are cyclic (time at full load not to exceed 50%)



Perkins Engines Company Limited

Peterborough PE1 5NA

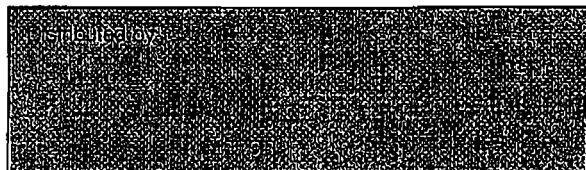
United Kingdom

Telephone +44 (0)1733 583000

Fax +44 (0)1733 582240

www.perkins.com

All information in this leaflet is substantially correct at the time of printing but may be changed subsequently by the Company



1100D Series

Power curves

T2478 - 1106D-E66TA



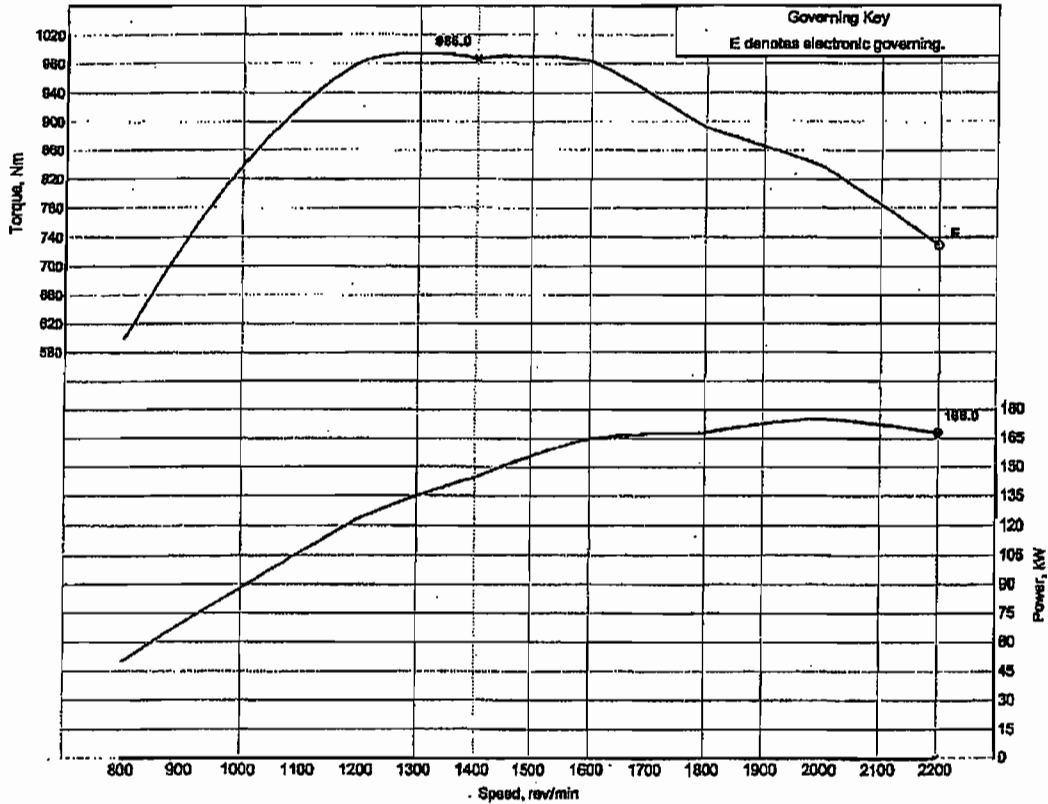
Perkins Engines Company Limited
©2005 Commercial In Confidence,
proprietary information of
Perkins Engines Company Ltd.

Engine Model:
1106D-E66TA

Curve: T 2478 Sheet 1
Issue: 2 Date: 14-Dec-2005

Development Target -
May be Subject to Change

Rating Standards:	ISO 14398: 2002	Fuel Types:	USA FED Off Highway	Europe Off Highway
Production Tolerance On Power Output:	+5%, -5%	Fuel Specification:	EPA 2D 89.330-88	CEC RF-06-99
Total Barometric Pressure (kPa):	100	Density (kg/l @ 15°C):	0.845 - 0.85	0.833 - 0.837
Vapour Pressure (kPa):	1	Viscosity (mm ² /s @ 40°C):	2.0 - 3.2	2.5 - 3.5
Air Inlet Temperature (°C):	25	Sulphur Content (% mass):	0.03 - 0.05	0.03 max
		Cetane No:	40 - 48	52 - 54



Performance with fuel oil at 40°C at pump inlet.

Notes:
1. For duty cycle refer to Perkins Engines (Peterborough) Limited statement on Product Duty Usage Limitations.

Exhaust Quality Standard
Smoke:
77/537/EEC- Includes FAS.

Certification Refs (Rated Speeds)

Emissions:
EU NRMM 97/68/EC Stage 3A.
US EPA 40 CFR Part 89 Tier 3.

e11*97/68HA*2004/26*0491* (2200)
PKQL08.6PJ1 (2200)

Auxiliaries fitted to engine:

Power Standard
UN/CE R120

Certification Refs (Rated Speeds)
120R-000021 (2200)

Approved by:
B. Reed
(Product Manager)

Accepted by:
C.J. Woolhouse
(Project Manager)

Tested by:
P. Knight
(Legislation Engineer)

Date: 14-Dec-2005

Date: 14-Dec-2005



ANDERSON COLUMBIA CO., INC.

P.O. Box 1829 • Lake City, FL 32056-1829
(386) 752-7585 • (386) 755-5430 FAX

January 7th, 2013

Florida Department of Environmental Protection
Receipts
P.O. Box 3070
Tallahassee, Florida 32315-3070

**RE: Air General Permit Renewal for Anderson Columbia Co., Inc. Trio
Crusher No 2, (FDEP NO. 7775491).**

To Whom It May Concern:

Please find enclosed one (1) copy of the Air General Permit renewal application for the above referenced crusher. A check for \$100.00 has been enclosed to cover the permit fees.

Please call me at (386) 752-7585 ext. 243 if you have any questions about this matter.

Sincerely,

ANDERSON COLUMBIA CO., INC.

A handwritten signature in black ink, appearing to read 'S. R. Cleveland', is written over the printed name of the sender.

Scott R. Cleveland, P.G.
Environmental Manager