

**Florida Department of Environmental Protection
Cash Receiving Application (CRA)**

Cashlisting by Deposit #: 004243

Printed: 10/8/13 9:43:44AM - Page 12 of 15

Cashlisting: **114428** Cashlist Area: **3755** Description: **DIV OF AIR RESOURCES MGMT.**
 Deposit No: **004243** Date Deposited: **10/07/2013** Contact: **BARBARA FRIDAY**

Object	Transmittal	Dep DDN	Receipt Number	Pre-Numbered Receipt	Name	Check Number	Payment Amount	Reference Account	Payment Number	Remittance Number	Fund	Grant
002272	78604	549629	831442		CARE CLEANERS	4676	\$100.00	0310473	1247173	1056158	PFTF	
	78604	549630	831443		STEVES EXCAVATING AND PAVING INC.	3069	\$100.00	7775392	1247174	1056159	PFTF	
Object Code 002272 Subtotal:							\$200.00					
002278	78604	549626	831439		CROSS REMEDIATION, INC.	024456	\$200.00	74065	1247170	1056155	APCTF	
Object Code 002278 Subtotal:							\$200.00					
002303	78604	549632	831445		JACKSONVILLE, CITY OF	01113704	\$410.00		1247178	1056161	PFTF	
Object Code 002303 Subtotal:							\$410.00					
002304	78604	549632	831445		JACKSONVILLE, CITY OF	01113704	\$300.00		1247177	1056161	PFTF	
Object Code 002304 Subtotal:							\$300.00					
Cashlisting 114428 Total:							\$1,110.00					

Florida Department of Environmental Protection
 Cash Receiving Application (CRA)

Cashlisting by Deposit Number Summary : 004243

Printed: 10/8/13 9:45:04AM - Page 10 of 13

RECEIVED

OCT 09 2013

DIVISION OF AIR
 RESOURCE MANAGEMENT

Cashlisting: 114428
 Deposit No: 004243
 Cashlist Area: 3755
 Date Deposited: 10/07/2013

Description: DIV OF AIR RESOURCES MGMT.
 Contact: BARBARA FRIDAY

Object Code	Description	Total
002272	NON-TITLE V GENERAL PERMIT	\$200.00
002278	ASBESTOS REMOVAL FEE	\$200.00
002303	CTY DELG-AIR CONTRUCT	\$410.00
002304	CTY DELG-AIR OPERATE	\$300.00

Cashlisting 114428 Total: \$1,110.00

**NONMETALLIC MINERAL PROCESSING PLANT (CRUSHER)
AIR GENERAL PERMIT EXAMPLE REGISTRATION WORKSHEET**

Facility Identification Number - If known (seven digit number)

7775392-003-AG

Facility # 7775392

Registration Type

Check one:

INITIAL REGISTRATION - Notification of intent to:

- Construct and operate a proposed new facility.
- Operate an existing permitted facility not currently using an air general permit (e.g., a facility proposing to go from an air operation permit to an air general permit). If the facility currently holds one or more air operation permits, such permit(s) must be surrendered by the owner or operator upon the effective date of this air general permit. (See "Surrender of Existing Air Operation Permit(s)" below.)
- Operates an existing facility not currently permitted or using an air general permit.

RE-REGISTRATION (for facilities currently using an air general permit) - Notification of intent to:

- Continue operating the facility after expiration of the current term of air general permit use.
- Continue operating the facility after a change of ownership.
- Make an equipment change requiring re-registration pursuant to Rule 62-210.310(2)(e), F.A.C.
- Any other change not considered an administrative correction under Rule 62-210.310(2)(d), F.A.C.

Surrender of Existing Air Operation Permit(s) - For Initial Registrations Only, if Applicable

All existing air operation permits for this facility are hereby surrendered upon the effective date of this air general permit; specifically permit number(s):

N/A

General Facility Information

Facility Owner/Company Name (Name of corporation, agency, or individual owner who or which owns, leases, operates, controls, or supervises the facility.)

STEVE'S EXCAVATING & PAVING INC.

Site Name (Name, if any, of the facility site; e.g., Plant A, Metropolis Plant, etc. If more than one facility is owned, a complete registration must be submitted for each.)

KEENE ROAD YARD

Facility Location (Physical location of the facility, not necessarily the mailing address.)

Street Address: 1741 N. KEENE ROAD

City: CLEARWATER

County: PINE HILLS

Zip Code: 33755

Facility Start-Up Date (Estimated start-up date of proposed new facility.)(N/A for existing facility.)

N/A

Facility Contact

Name and Position Title (Plant manager or person to be contacted regarding day-to-day operations at the facility.)

Print Name and Title: STEVE SARNAGO, VICE PRESIDENT

Facility Contact Telephone Numbers

Telephone: (727) 446-3485

Fax: (727) 442-4719

Cell phone: (227) 638-2711

E-mail: Catsarnago@AOL.COM

Facility Contact Mailing Address

Organization/Firm: STEVE'S EXCAVATING & PAVING INC.

Mailing Address: PO BOX 303

City: DUNEDIN

County: ANELLAS

Zip Code: 34697

Other Contact/Representative (to serve as additional Department contact)

Name and Position Title

Print Name and Title: CATHY SARNAGO PRESIDENT

Other Contact/Representative Telephone Numbers

Telephone: _____

Fax: _____

Cell phone: _____

SAME

E-mail: _____

Other Contact/Representative Mailing Address

Organization/Firm: _____

Mailing Address: _____

City: _____

SAME

County: _____

Zip Code: _____

Type of Facility

Check one:

Stationary Facility Relocatable Facility

Type(s) of Precautions Used to Prevent Unconfined Emissions

Check all that apply for the management of roads, parking areas, stock piles and yards:

Maintain Roads/Parking/Yards Use Water Application Use Dust Suppressant
 Remove Particulate Matter Reduce Stock Pile Height Install Wind Breaks

Check the location of spray bars at the nonmetallic mineral processing plant:

Feeders Entrance to "Crusher" Exit of "Crusher"
 Classifier Screens Conveyor Drop Points

Emission Unit Details

COMPONENT DESCRIPTION (e.g. primary, secondary crusher, screener, conveyor, RICE* engine and fuel type, etc.)	MANUFACTURER	DATE OF MANUFACTURE	MODEL NUMBER	SERIAL NUMBER	RATED CAPACITY (tons/hr, hp)
TRACK MOUNT IMPACT PLANT	PIONEER FAST TRAX	2007	FT 4240	407345	325 TONS PER HR.
CUMMINS DIESEL KP STACKING CONVEYOR	KP	2007	II-3050	407030	325 TONS PER HR.
Lokotrack ST352 mobile screen	Metso Minerals	2006	ST352	R2251440	325 tons per hr.

*RICE: Reciprocating Internal Combustion Engine

Description of Facility

Below, or as an attachment to this form, provide a description of the nonmetallic mineral processing plant operations at the facility in sufficient detail to demonstrate the facility's eligibility for use of this air general permit and to provide a basis for tracking any future equipment or process changes at the facility. Describe material(s) processed, all air pollutant-emitting processes, and identify any air pollution control measures used. Mobile source equipment information is not needed (eg.: trucks, bulldozers, front-end loaders, etc.)

THIS IS A PIONEER FAST TRAX 2007 MODEL # 4240 TRACK MOUNT IMPACT PLANT SERIAL # 407345

THIS MACHINE HAS SPRAY BARS @ THE FEEDERS, SCREENS, CRUSHER EXTREME, ALL DROP POINTS AND EXIT OF CRUSHER. STEVE'S USES WATER SPRINKLERS TRUCKS WHEN NEEDED, WIND BREAKS & STOCK PILES HEIGHT TO A MINIMUM.

WE MAINTAIN ALL PARKING, ROADS & YARD USING REASONABLE PRECAUTIONS TO PREVENT UNCONFINED EMISSIONS

PLEASE SEE 5-PAGE EXHIBIT ATTACHED

Helpful Definitions:

"Capacity" – Per 40 CFR 60.671, the cumulative rated capacity of all initial crushers that are part of the plant.

"Department" or "DEP" - The State of Florida Department of Environmental Protection.

"Emissions Unit" - Any part or activity of a facility that emits or has the potential to emit any air pollutant.

"Facility" - All of the emissions units which are located on one or more contiguous or adjacent properties, and which are under the control of the same person (or persons under common control).

"Owner" or "Operator" - Any person or entity who or which owns, leases, operates, controls or supervises an emissions unit or facility.

"Nonmetallic Mineral Processing Plant" – Per 40 CFR 60.671, any combination of equipment that is used to crush or grind any nonmetallic mineral wherever located, including lime plants, power plants, steel mills, asphalt concrete plants, portland cement plants or any other facility processing nonmetallic minerals except as provided in 40 CFR §60.670 (b) and (c).

"Relocatable Facility" - A facility such as, but not limited to, an asphalt plant, portable power generator, or relocatable nonmetallic mineral processing plant, which is designed to be physically moved to, and operated on, different sites by being wholly or partially dismantled and re-erected in essentially the same configuration. It shall not be operable while in transit.

"Screening Operation" – Per 40 CFR 60.671, a device for separating material according to size by passing undersize material through one or more mesh surfaces (screens) in series and retaining oversize material on the mesh surfaces (screens). Grizzly feeders associated with truck dumping and static (non-moving) grizzlies used anywhere in the nonmetallic mineral processing plant are not considered to be screening operations.

"Size" – Per 40 CFR 60.671, the rated capacity in tons per hour of a crusher, grinding mill, bucket elevator, bagging operation, or enclosed truck or railcar loading station; the total surface area of the top screen of a screening operation; the width of a conveyor belt; and the rated capacity in tons of a storage bin.

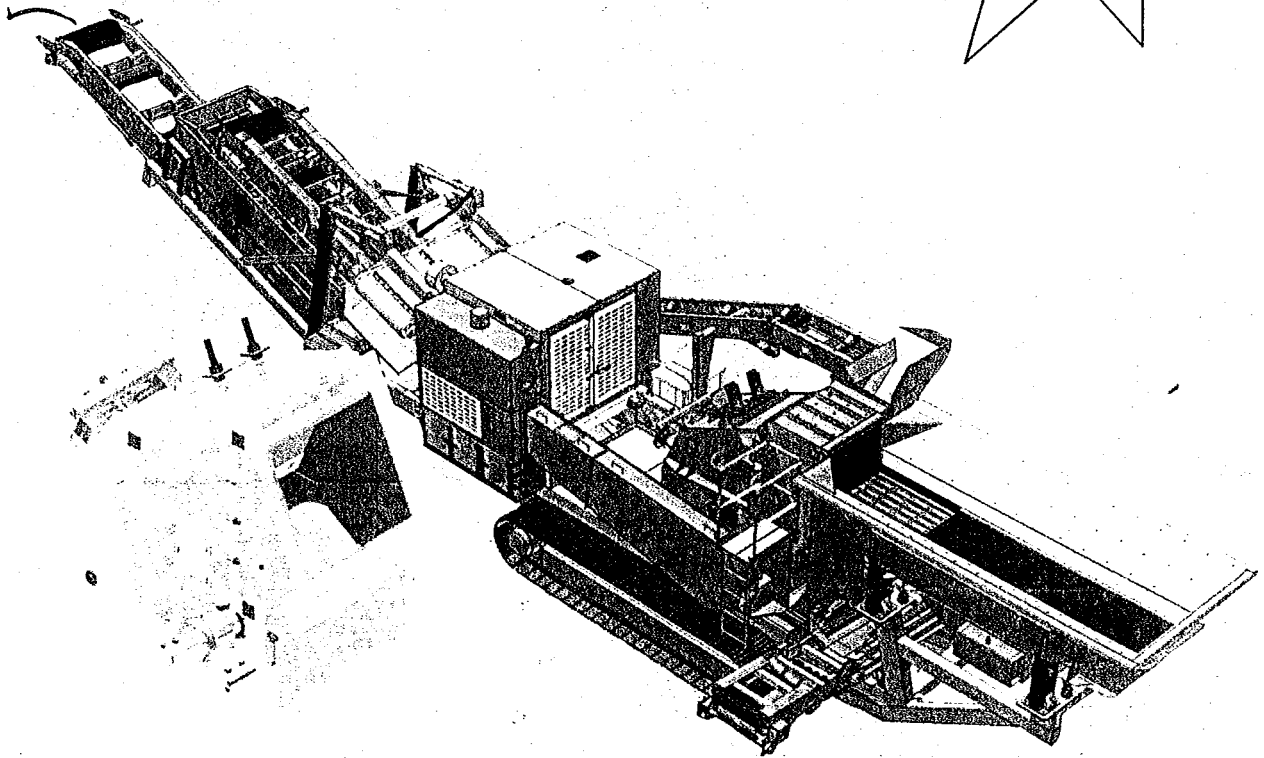
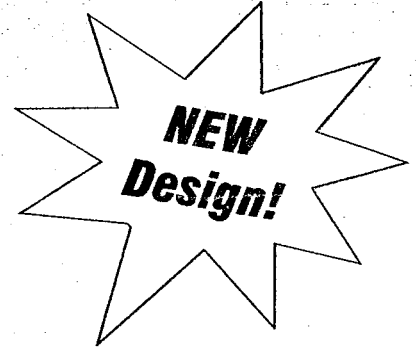
"Unconfined Emissions" - Emissions which escape and become airborne from unenclosed operations or which are emitted into the atmosphere without being conducted through a stack.

Pioneer[®]

FastTrax

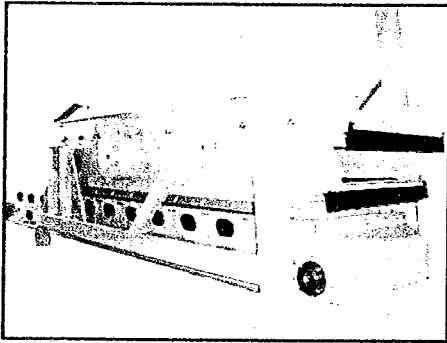
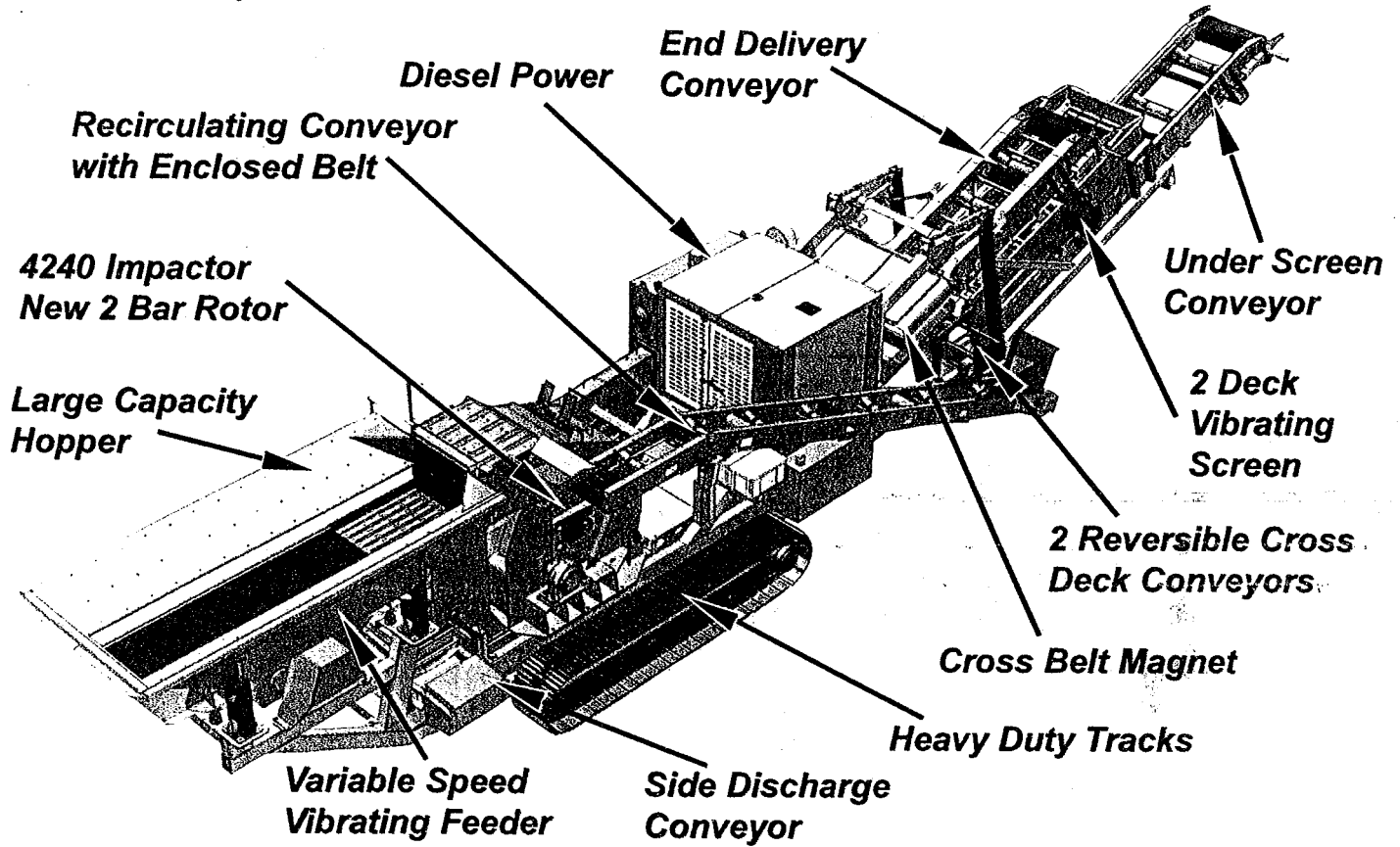
FT4240

Track Mount Impact Plant

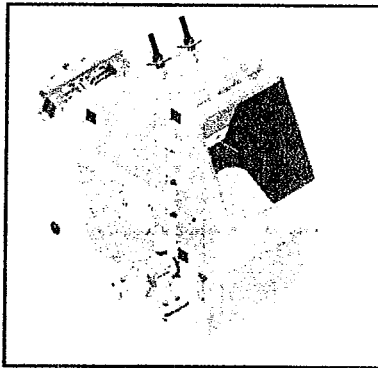


KOLBERG-PIONEER, INC.
an Astec company

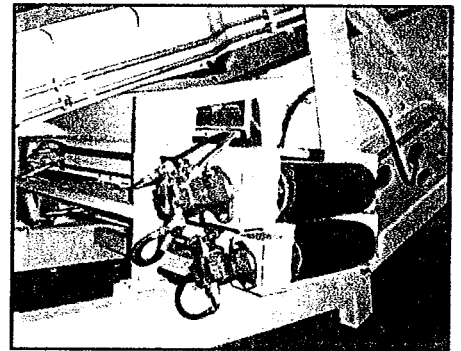
Pioneer FT4240 Track Mount...new design makes transport easier!



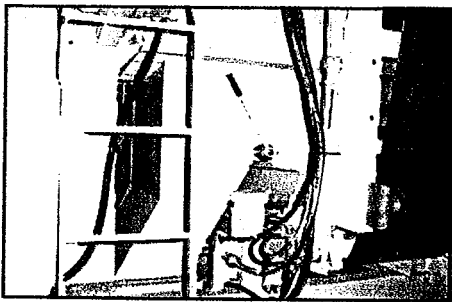
Optional two deck vibrating screen features hydraulically driven adjustable speed and stroke.



Parametric 3-D designed, PIONEER 4240 Impact Crusher.



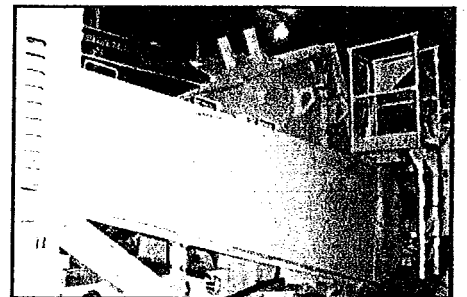
Two reversible cross deck conveyors provide maximum production flexibility.



Easy to use flop gate allows operator to easily direct bypass material.

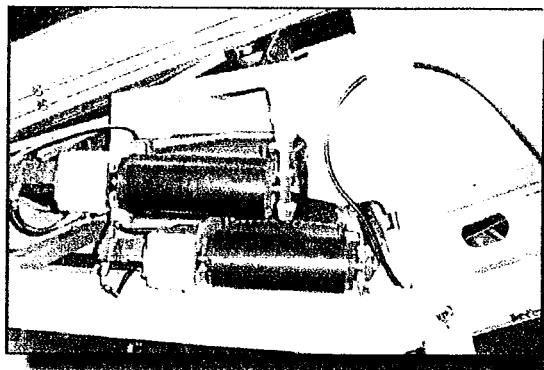
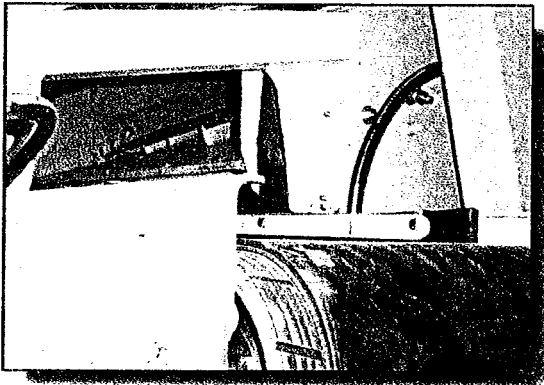


All new huck bolted vibrating feeder provides outstanding durability.



V-belt direct drive impactor for simplicity and ease of maintenance.

- **Two deck screen allows production of more product sizes without additional screening.**
- **All new 2 bar rotor design allows maximum application flexibility.**
- **Dual reversible cross deck screen conveyors can be discharged to off-plant stackers.**
- **Easy to use flop gate allows operator to easily direct bypass material.**
- **Move while crushing for continuous operation allowing windrowing of finished product.**
- **New design combines the portability of a track mount crusher with optional 2 deck screening and closed circuit efficiency.**
- **Remote control for convenient operation.**



PIONEER FT4240 Impact Plant: A new highly portable design featuring a two deck screen for increased application flexibility.

This new design makes transport significantly easier, an important consideration for contractors and smaller operators.

The highly portable FT4240 track-mounted Horizontal Shaft Impactor (HSI) plant is designed to simply drive off the transport trailer and begin crushing. With innovative features and options, the FT4240 provides maximum production and application flexibility.

The FT4240 will crush "on the go" allowing the finished product to be windrowed as the plant is fed material to be crushed. The plant also provides hydraulic drive for off plant conveyors for larger product stockpiling. In addition, the optional two deck screen package provides the ultimate highly portable all-in-one processing plant able to produce multiple products simultaneously.

For a high production, complete crushing solution in a self contained package built in the USA, the only choice is the *All New Pioneer FT4240*.

SPECIFICATIONS

Engine

- Cummins QSL9-300hp
- 150gal gallon fuel tank

Hydraulics

- Parker seal lock provides leak free connection
- Easy access ground level controls and lockable enclosure
- Hydrostatic pump group and circuit with 150gal gallon oil reservoir

Electronics

- Self diagnostics are engaged at each start-up sequence

Impact Crusher

- 4240 with heavy duty shaft and bearings. Replaceable liners & wear lips. Wedge style blow bar retention system.

Vibrating Feeder

- 40" x 14', 4' step deck grizzly, variable speed

Hopper

- 5 1/2 cubic yard capacity
- 14'-6" x 7'-0" loading hopper with fixed walls and by-pass chute

End Delivery Conveyor

- 36" x 40' hydraulic drive.

Side Delivery Conveyor

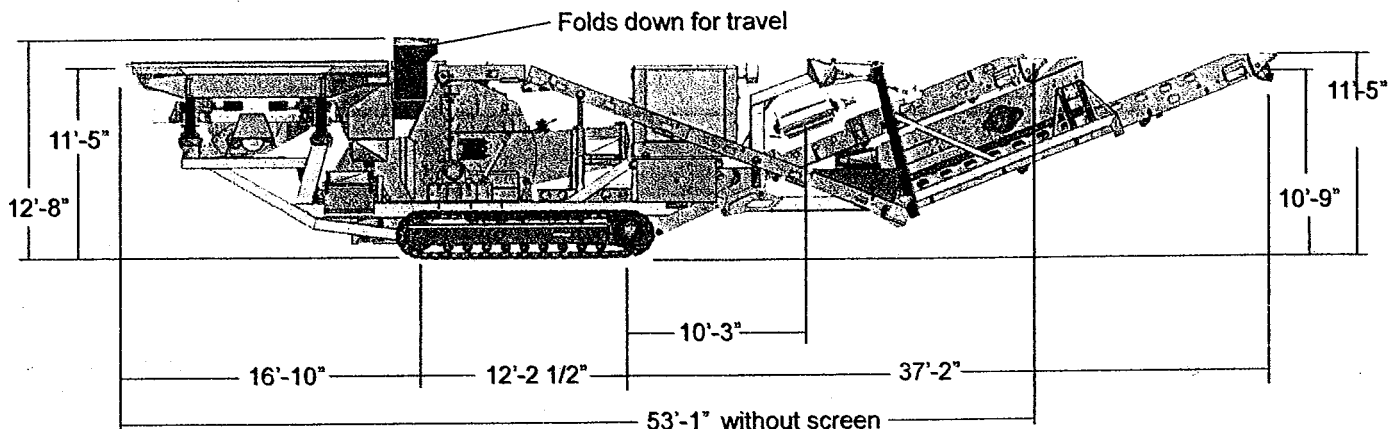
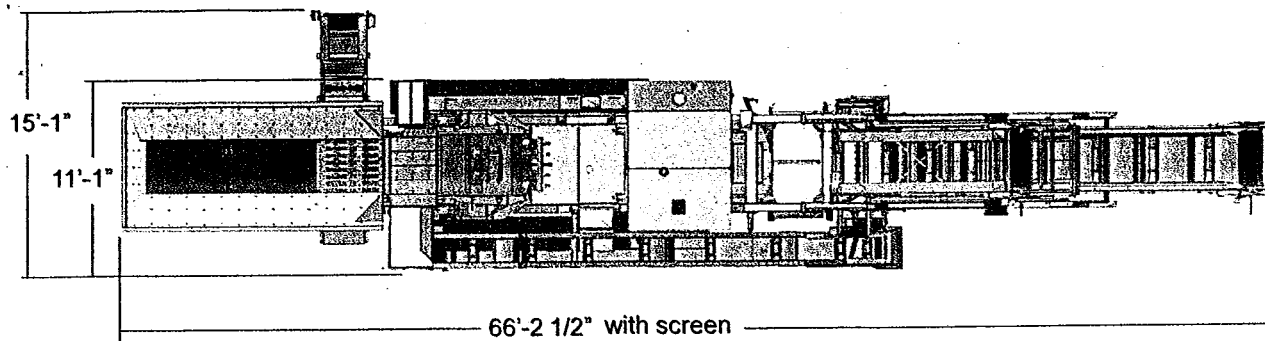
- 24" x 12' with hydraulic fold

Recirculating Conveyor System

- 18" inclined conveyor with cleated belt
- 18" x 7' cross conveyor (2 conveyors, one at each screen deck)

Options

- 4' x 12' two deck screen w/underscreen conveyor and two side delivery conveyors
- Permanent self-cleaning cross belt magnet
- Side delivery conveyor
- Close circuit conveyor system



Overall Length: 66'-2 1/2" with screen

53'-1" without screen

Weight: 99,000lb with screen (approximate)

Travel Height: 11'-5"

Overall Width: 15'-1" (operating w/optional
side delivery conveyor)

Travel Width: 11'-1"

Overall Height: 12'-8" (operating)

Process up to 325 Tons per Hour

NOTE: Specifications are subject to change without notice.

Because KPI may use in its catalog & literature, field photographs of its products which may have been modified by the owners, products furnished by KPI may not necessarily be as illustrated therein. Also continuous design progress makes it necessary that specifications be subject to change without notice. All sales of the products of KPI are subject to the provisions of its standard warranty. KPI does not warrant or represent that its products meet any federal, state, or local statutes, codes, ordinances, rules, standards or other regulations, including OSHA and MSHA, covering safety, pollution, electrical wiring, etc. Compliance with these statutes and regulations is the responsibility of the user and will be dependent upon the area and the use to which the product is put by the user. In some photographs, guards may have been removed for illustrative purposes only. This equipment should not be operated without all guards attached in their normal position. Placement of guards and other safety equipment is often dependent upon the area and the use to which the product is put. A safety study should be made by the user of the application, and, if required additional guards, warning signs and other safety devices should be installed by the user, wherever appropriate before operating the products.



700 W. 21st St. - P.O. Box 20 - Yankton, SD 57078

Phone: (605) 665-8771 - FAX: (605) 665-8858

mail@kolbergpioneer.com

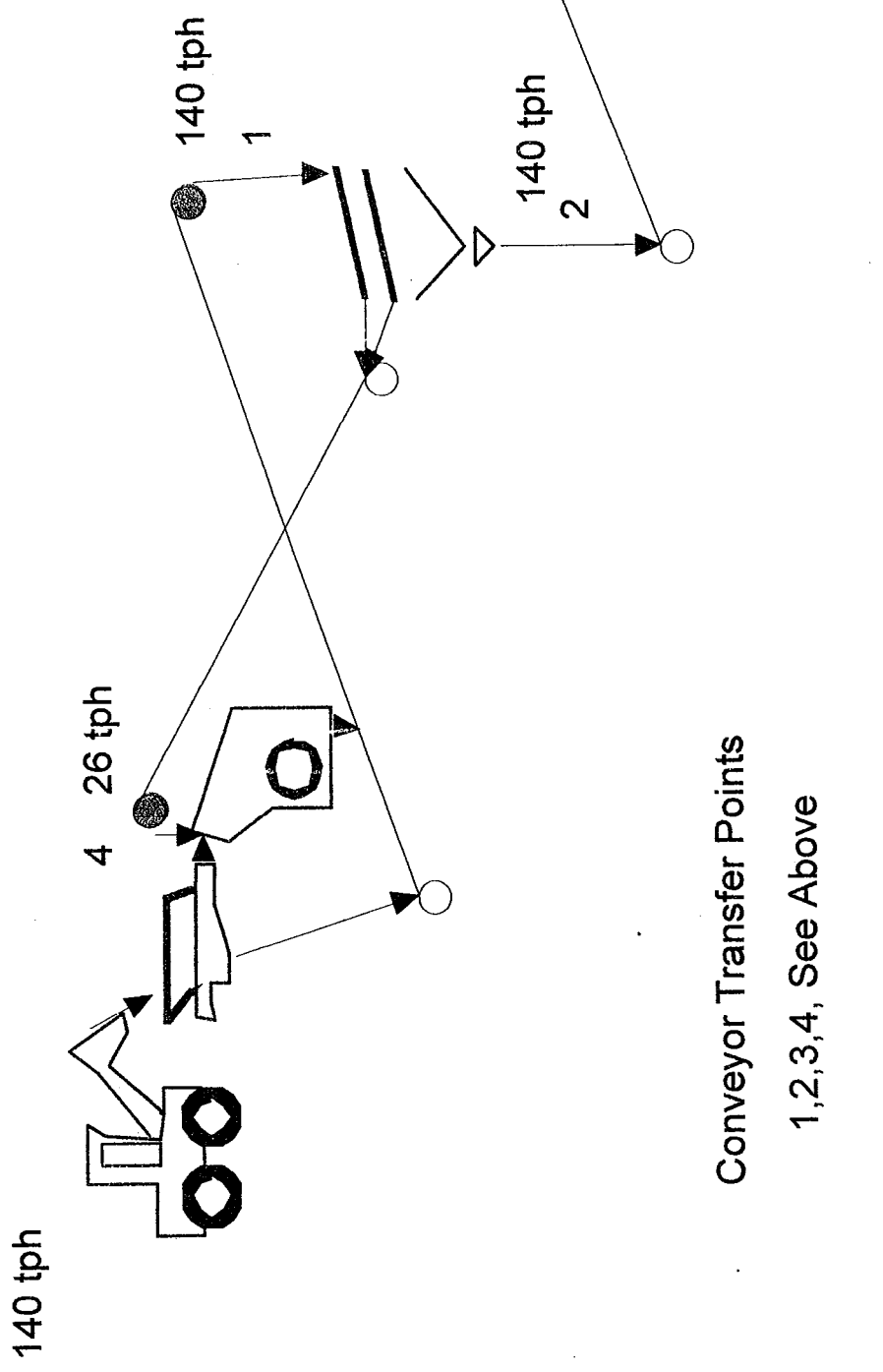
800-542-9311

www.kpijci.com

Steves Excavation Co.

PIONEER FT 4240 closed circuit Track Plant

Unit Serial Number 407345



Conveyor Transfer Points

1,2,3,4, See Above

Crusher output gradations, tons per hour of products and screen calculations may change due to variations in operating conditions and application of the crushing and screening equipment. This information does not constitute an expressed or implied warranty or guarantee, but shows results of test crushing of samples provided by customers or book values published by manufacturers. This is guideline information only.

site: Steves Excavating Co. date: February/22/2007
prepared by:

Product Presentation

Nordberg CV30

Nordberg CV100

Lokotrack ST171

Lokotrack ST348

Lokotrack ST352

Lokotrack ST358

Lokotrack ST620

Nordberg SW348

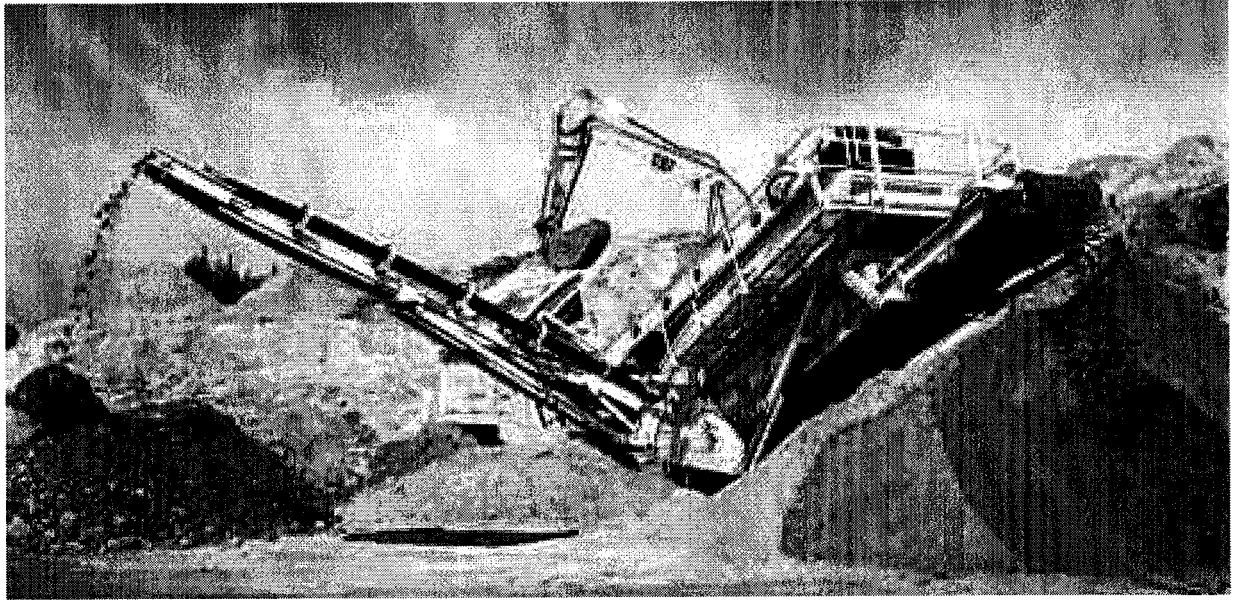
#1



Lokotrack CV, ST and SW Series Mobile Screens



#2



Offering the world's widest range of Lokotrack series smart mobile screens

For over twenty years now, Metso Minerals has pioneered the development of mobile crushing and screening equipment: serial production of both track and wheel mounted mobile crushing and screening equipment started up in 1985.

Today, Metso Minerals remains at the cutting edge of mobile crushing and screening technology. We have delivered well over 10,000 mobile screens and mobile crushing plants to customers worldwide.

Our mobile screen family consists of eight different models. Lokotrack ST Series and Nordberg CV and SW Series mobile screens today set the standard in product development and quality. The product range covers all screening applications, from the accurate classification of aggregates, soil and recycle materials to one or multiple end products.

SmartScreen™ technology provides optimum, continuous screening results

Metso Minerals is the first manufacturer to incorporate the revolutionary SmartScreen™ technology into its track-mounted mobile screens (Lokotrack ST171, ST348, ST352 and ST358)

With its intelligent controller, the SmartScreen™ system supervises and adjusts the unit automatically for optimum, continuous screening results.

For the customer, this automation technology provides increased efficiency and reliability, higher production, easier operation, a reduced need for manpower and thus more profitable screening contracts.

SmartScreen™ technology also means it is possible to link the whole mobile crushing and screening process together with this intelligent control system.

Take a closer look at the new, comprehensive mobile screen range under the Lokotrack brand name. Only Metso Minerals offers you proven features, quality products, and world wide after sales service.

SmartScreen™ for high production and multiple products

Metso Minerals mobile screens now incorporate SmartScreen™ technology. The latest innovation in this field is the new Lokotrack ST352 track-mounted mobile screening plant that provides the ideal solution for jobs requiring high production, fine screening, and multiple products.

New SmartScreen™ Technology

The Lokotrack ST352 incorporates the revolutionary SmartScreen™ technology. The intelligent controller (IC300) not only controls the start up and shut down process, but also supervises and adjusts the unit automatically for optimum screening results. By controlling the feed rate and screen performance, it maintains maximum screening efficiency. In addition, IC300 carefully monitors all key functions and unit components to ensure longevity and reliability.

The ST352 automation system may also be linked with other Lokotrack crushers (LTs) and mobile screens (STs).

Heavy duty construction

The ST 352's heavy duty construction provides the increased stability and durability that is required in difficult applications. Mounted on heavy duty twin 400 mm (15.75") wide hydraulically driven tracks, the ST 352's precision-engineered balance allows for safe movement over soft and uneven terrain. Remote and radio controls make movement around the job site easier.

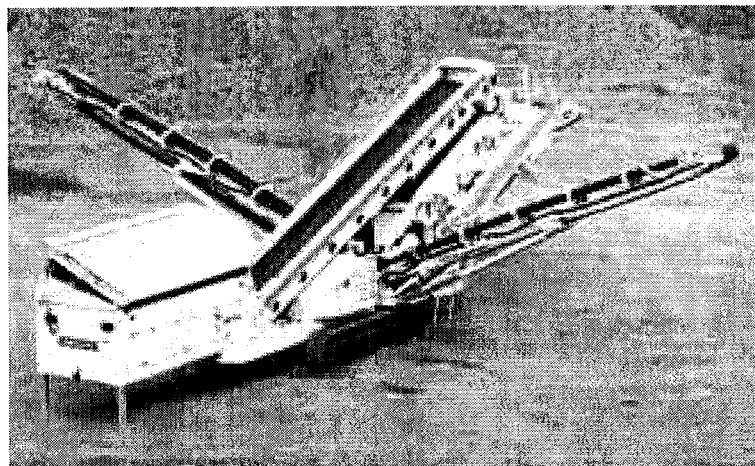
3.7 m x 1.5 m (12' x 5') 2-bearing screen

The unique end to end crowning of the ST352 screen box and adjustable screen angle allow for higher production and more efficient separation than with similarly sized flat screens.

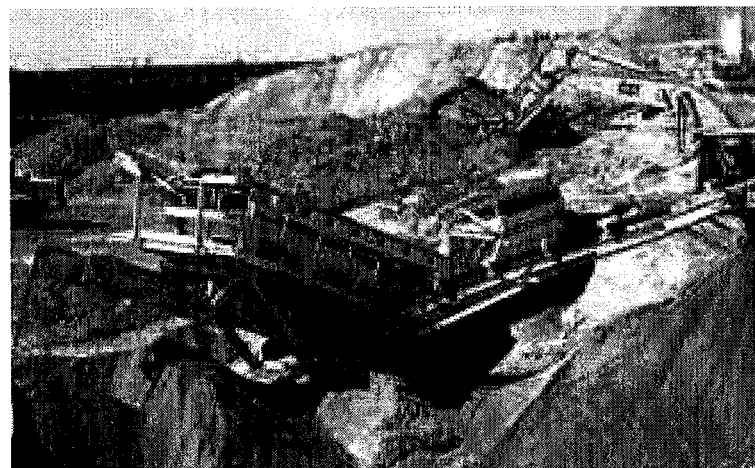
Main features of Lokotrack ST352:

- Complete process control with IC300 as standard
- High-capacity 12' x 5' screen box
- Proven 2-bearing screen with adjustable screen angle
- Easy access to all service points
- Patented conveyor folding mechanism makes transport easy

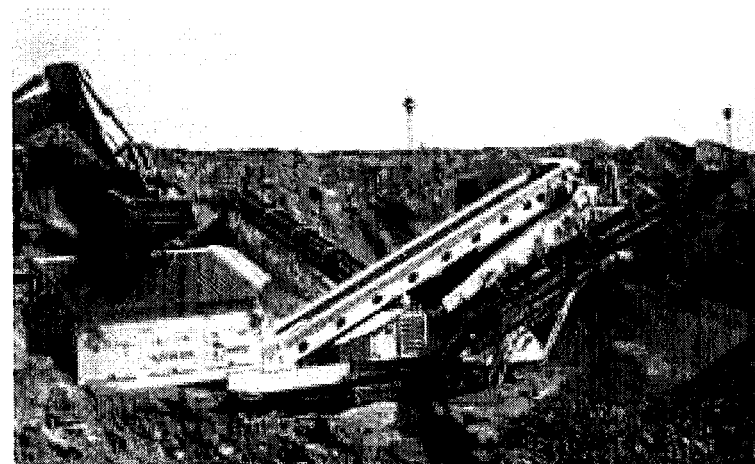
The Lokotrack ST352's heavy duty construction provides increased stability and durability for the most demanding applications.



Remote and radio controls are provided as standard features for easy movement around the job site.



The Lokotrack ST352 is available with a direct feed system when hopper and feed conveyors are not needed.

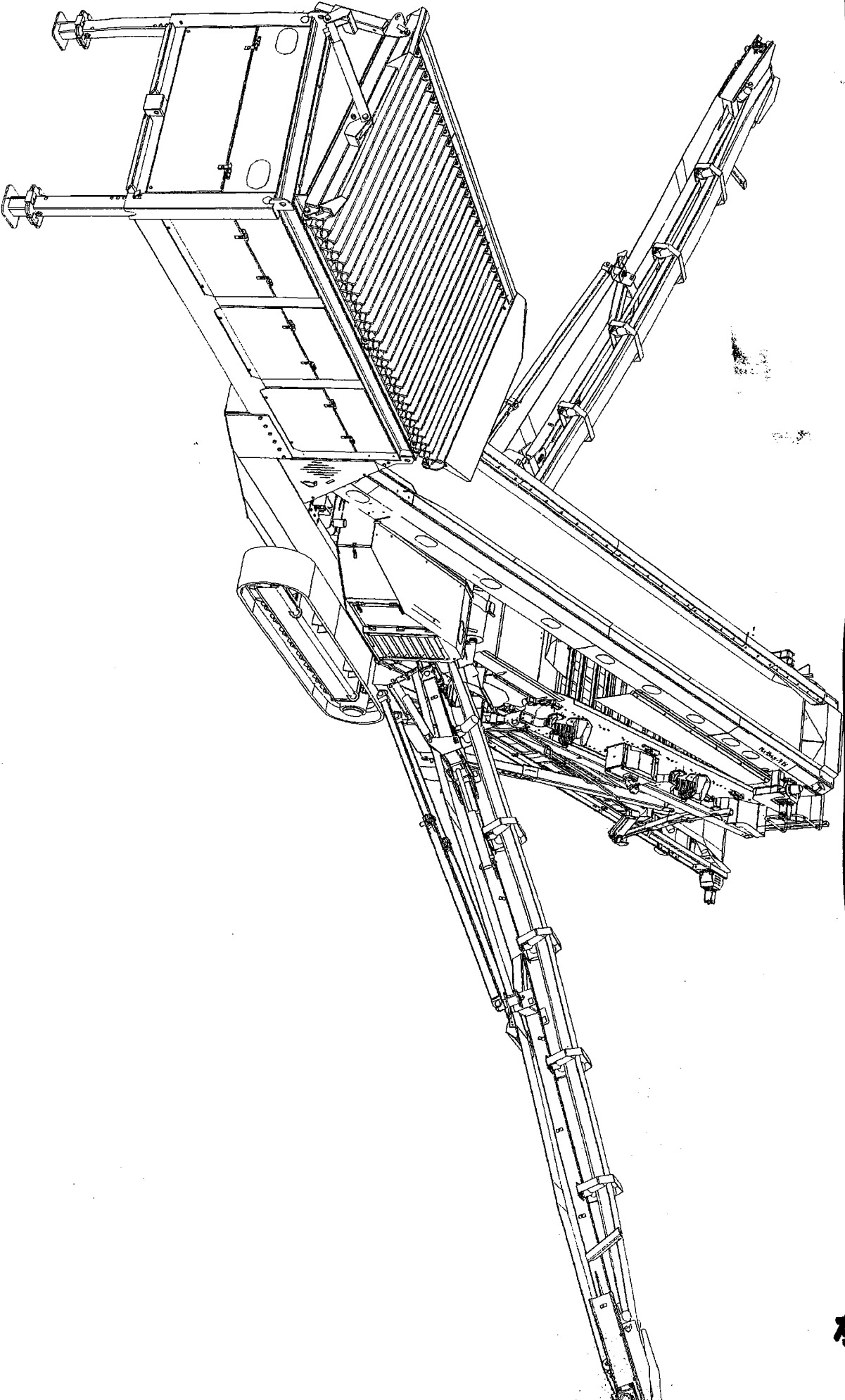


The ST352's new, modular design makes servicing quick and easy.



Lokotrack ST352 s/n R2251440
TOC MOBILE SCREEN

#1



NONMETALLIC MINERAL PROCESSING PLANTS (CRUSHERS)

Air General Permit Example Registration Worksheet

The Florida Department of Environmental Protection ("Department" or "FDEP") has established an air general permit under paragraph 62-210.310(5)(e), Florida Administrative Code ("F.A.C."), for nonmetallic mineral processing plants. An air general permit is an authorization by rule to construct or operate a specific type of air pollutant emitting facility. Use of such authorization by any individual facility does not require action by the Department. The terms and conditions of the air general permit are set forth in the rule, rather than in a separately issued air construction or air operation permit.

If you are the owner or operator of an eligible facility comprising one or more nonmetallic mineral processing plants, you may register to use the air general permit under paragraph 62-210.310(5)(e), F.A.C., by following the general procedures and conditions given under subsections 62-210.310(2) and 62-210.310(3), F.A.C.

To register, you may use the Department's new online Air General Permit Electronic Registration Submittal system (<http://www.dep.state.fl.us/air/emission/agpers.htm>), or complete this registration worksheet and submit it to the address below, along with the air general permit registration processing fee (\$100.00), payable to FDEP.

Regular USPS Mail Delivery

Department of Environmental Protection
Receipts
Post Office Box 3070
Tallahassee, Florida 32315-3070

or

Overnight Delivery (FedEx, UPS, DHL, etc.)

Department of Environmental Protection
3800 Commonwealth Blvd.
Mail Station 77
Tallahassee, Florida 32399

If you properly register to use an air general permit, and are not denied use of the air general permit by the Department, you are authorized to construct and operate the facility in accordance with the general terms and conditions of Rule 62-210.310, F.A.C., and the specific terms and conditions of paragraph 62-210.310(5)(e), F.A.C. Your facility may vary, so be sure your registration describes the operations at your facility in sufficient detail to demonstrate the facility's eligibility for use of the air general permit and to provide a basis for tracking any future equipment or process changes. Your registration should describe all air pollutant-emitting processes and equipment at the facility, and it should identify any air pollution control measures or equipment used.

The rules do not require any specific format for the registration. This worksheet, however, has been designed to assist owners and operators. Using it as a template for a general permit registration will help ensure that all necessary information is submitted.

Additional information can be found on the Department's air general permit program website (http://www.floridadep.org/air/emission/air_gp.htm) or by calling the Small Business Environmental Assistance Program Hotline at 1-800-722-7457.