

CONCRETE BATCHING PLANTS
AIR GENERAL PERMIT EXAMPLE REGISTRATION WORKSHEET

RECEIVED

APR 23 2012

DIVISION OF AIR
RESOURCE MANAGEMENT

Facility Identification Number - If known (seven digit number)

7775403-001-AG

0310546

0310546-002

Registration Type

Check one:

INITIAL REGISTRATION - Notification of intent to:

- Construct and operate a proposed new facility.
- Operate an existing permitted facility not currently using an air general permit (e.g., a facility proposing to go from an air operation permit to an air general permit). If the facility currently holds one or more air operation permits, such permit(s) must be surrendered by the owner or operator upon the effective date of this air general permit. (See "Surrender of Existing Air Operation Permit(s)" below.)
- Operates an existing facility not currently permitted or using an air general permit.

RE-REGISTRATION (for facilities currently using an air general permit) - Notification of intent to:

- Continue operating the facility after expiration of the current term of air general permit use.
- Continue operating the facility after a change of ownership.
- Make an equipment change requiring re-registration pursuant to Rule 62-210.310(2)(e), F.A.C.
- Any other change not considered an administrative correction under Rule 62-210.310(2)(d), F.A.C.

Surrender of Existing Air Operation Permit(s) - For Initial Registrations Only, if Applicable

All existing air operation permits for this facility are hereby surrendered upon the effective date of this air general permit; specifically permit number(s):

General Facility Information

Facility Owner/Company Name (Name of corporation, agency, or individual owner who or which owns, leases, operates, controls, or supervises the facility.)

Hard Rock Materials, Inc.

Site Name (Name, if any, of the facility site; e.g., Plant A, Metropolis Plant, etc. If more than one facility is owned, a complete registration must be submitted for each.)

Baldwin Plant

Facility Location (Physical location of the facility, not necessarily the mailing address.)

Street Address: 1005 Baldwin Tradeplex

City: Baldwin

County: Duval

Zip Code: 32234

Facility Start-Up Date (Estimated start-up date of proposed new facility.)(N/A for existing facility.)

NA

Facility Contact

Name and Position Title (Plant manager or person to be contacted regarding day-to-day operations at the facility.)

Print Name and Title: Landon Zumbar, Plant Manager

Facility Contact Telephone Numbers

Telephone: 904-284-1377

Fax: 904-284-6677

Cell phone: 904-449-6968

E-mail: Lzumbar@hardrockmaterials.com

Facility Contact Mailing Address

Organization/Firm: Hard Rock Materials, Inc.

Mailing Address: 1005 Baldwin Tradeplex

City: Baldwin

County: Duval

Zip Code: 32234

Correspondence Contact/Representative (to serve as additional Department contact)

Name and Position Title

Print Name and Title: Jon Thomas, Sales & QC Representative

Correspondence Contact/Representative Telephone Numbers

Telephone: 904-284-1377

Fax: 904-284-6677

Cell phone: 904-449-6968

E-mail: jthomas_hm@msn.com

Correspondence Contact/Representative Mailing Address

Organization/Firm: Hard Rock Materials, Inc.

Mailing Address: 4410 Industrial Park Road

City: Green Cove Springs

County: Clay

Zip Code: 32043

Government Facility Code (check only one)

- Facility not owned or operated by a federal, state, or local government.
- Facility owned or operated by the federal government.
- Facility owned or operated by the state.
- Facility owned or operated by the county.
- Facility owned or operated by the municipality.
- Facility owned or operated by a water management district.

Type of Facility

Check one:

Stationary Facility **Relocatable Facility**

Type(s) of Reasonable Precautions Used to Prevent Unconfined Emissions

Check all precautions to be used for the management of roads, parking areas, stock piles and yards:

Pave Roads **Pave Parking Areas** **Pave Yards**
 Maintain Roads/Parking/Yards **Use Water Application** **Use Dust Suppressant**
 Remove Particulate Matter **Reduce Stock Pile Height** **Install Wind Breaks**

Check all precautions to be used for the management of drop points to trucks:

Spray Bar **Chute** **Enclosure**
 Partial enclosure

Equipment Details Provide information for each silo, weigh hopper (batcher), and other enclosed storage and conveying equipment that are limited to a visible emissions of 5 percent opacity pursuant to Rule 62-296.414(1), F.A.C.

PROCESS EQUIPMENT TYPE (silo, weigh hopper, batcher, etc.)	PROCESS EQUIPMENT IDENTIFICATION*	CONTROL DEVICE (baghouse, vent filter, etc.)	CONTROL DEVICE MANUFACTURER	CONTROL DEVICE MODEL NUMBER
Split Silo	2-compartment	Dust Collector	Merts	CP-1520C-480-R
Secondary Silo	1-compartment	Dust Collector	Merts	CP-1520C-480-R
Loader	Komatsu			250-5L

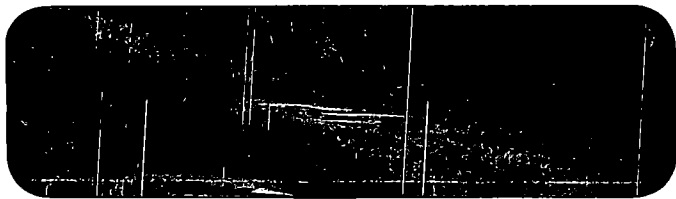
* If there are multiple pieces of the same types of process equipment (more than one silo, etc), provide an identifier (location, numeric designation, capacity or product) specific to each piece of equipment.

Description of Facility

Below, or as an attachment to this form, provide a description of the concrete batching plant operations at the facility in sufficient detail to demonstrate the facility's eligibility for use of this air general permit and to provide a basis for tracking any future equipment or process changes at the facility. Describe type of concrete product(s) manufactured, all air pollutant-emitting processes, and identify any air pollution control measures used. Mobile source equipment information is not needed (eg.: trucks, bulldozers, front-end loaders, etc.)

The plant is a Merts Big Easy command batch control system. It consists of two silos. One silo is split into two compartments with a capacity of 68 tons for each compartment. The other silo has a capacity of 108 tons. Normally, the plant uses cement in both sides of the split silo and fly ash in the other silo. However, if the project requires it, the cement in one of the silos can be replaced with slag (New Cem or other similar).

The plant has a central dust collector which serves both compartments of the split silo, the single silo and the mix drop point.



32915307070



02 1P

\$ 000.45⁰

0001656433 APR 19 2012

MAILED FROM ZIP CODE 32043

