



Florida Department of Environmental Protection

Bob Martinez Center
2600 Blair Stone Road
Tallahassee, Florida 32399-2400

Charlie Crist
Governor

Jeff Kottkamp
Lt. Governor

Michael W. Sole
Secretary

July 16, 2008

Mr. Richard Toppino, Director
Monroe Concrete Products, Incorporated
Post Office Drawer 1149-787
Key West, Florida 33041

Dear Mr. Toppino:

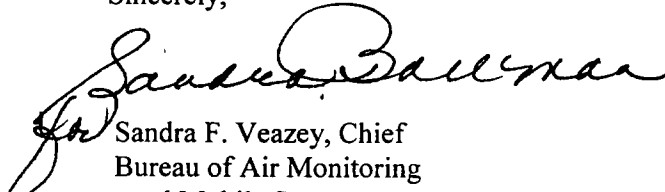
This is to acknowledge that your notification of intent to use the authority of Rule 62-210.310 to operate your facility was received on June 12, 2008. We have assigned ARMS No. 7775010-005 to this facility.

As you know, pursuant to Florida Statutes section 403.814, authority to operate under general permits commences thirty days after receipt of the registration form unless you have been notified by this office that your facility has not shown entitlement to operate pursuant to the rule provisions.

For your information, authority to operate pursuant to Rule 62-210.310 expires after 5 years. Therefore, a new registration form must be received no later than 5 years after the date your notice was received as indicated above. If your general permit rule conditions require testing, such testing must be completed within the time frame specified in the rule.

If you have any additional questions, please contact Dickson Dibble at 850/921-9586.

Sincerely,



Sandra F. Veazey, Chief
Bureau of Air Monitoring
and Mobile Sources

SFV/pg

cc: Mr. Sherrill Culliver, South District

**CONCRETE BATCHING PLANT
AIR GENERAL PERMIT REGISTRATION FORM**

Part II. Notification to Permitting Office

(Detach and submit to appropriate permitting office; keep copy onsite)

Instructions: To give notice to the Department of an eligible facility's intent to use this air general permit, the owner or operator of the facility must detach and complete this part of the Air General Permit Registration Form and submit it to the appropriate Department of Environmental Protection or local air pollution control program office which has permitting authority. Please type or print clearly all information, and enclose the appropriate air general permit registration processing fee pursuant to Rule 62-4.050, F.A.C. (\$100 as of the effective date of this form)

7775010-005

Registration Type

Check one:

INITIAL REGISTRATION - Notification of intent to:

- Construct and operate a proposed new facility.
 Operate an existing facility not currently using an air general permit (e.g., a facility proposing to go from an air operation permit to an air general permit).

RE-REGISTRATION (for facilities currently using an air general permit) - Notification of intent to:

- Continue operating the facility after expiration of the current term of air general permit use.
 Continue operating the facility after a change of ownership.
 Make an equipment change requiring re-registration pursuant to Rule 62-210.310(2)(e), F.A.C., or any other change not considered an administrative correction under Rule 62-210.310(2)(d), F.A.C.

Surrender of Existing Air Operation Permit(s) - For Initial Registrations Only

If the facility currently holds one or more air operation permits, such permit(s) must be surrendered by the owner or operator upon the effective date of this air general permit. In such case, check the first box, and indicate the operation permits being surrendered. If no air operation permits are held by the facility, check the second box.

- All existing air operation permits for this facility are hereby surrendered upon the effective date of this air general permit; specifically permit number(s):

7775010-004-AG

- No air operation permits currently exist for this facility.

General Facility Information

Facility Owner/Company Name (Name of corporation, agency, or individual owner who or which owns, leases, operates, controls, or supervises the facility.)

Monroe Concrete Products, Inc.

Site Name (Name, if any, of the facility site; e.g., Plant A, Metropolis Plant, etc. If more than one facility is owned, a registration form must be completed for each.)

Monroe Concrete Products, Inc. Concrete Batch Plant

Facility Location (Provide the physical location of the facility, not necessarily the mailing address.)

Street Address: Mile Marker 8.5 on US Highway #1

City: Rockland Key

County: Monroe

Zip Code: 33041

Facility Start-Up Date (Estimated start-up date of proposed new facility.) (N/A for existing facility)

N/A

Owner/Authorized Representative

Name and Position Title (Person who, by signing this form below, certifies that the facility is eligible to use this air general permit.)

Print Name and Title: Richard Toppino, Director

Owner/Authorized Representative Mailing Address

Organization/Firm: Monroe Concrete Products, Inc.

Street Address: P.O. Drawer 1149-787

City: Key West

County: Monroe

Zip Code: 33041

Owner/Authorized Representative Telephone Numbers

Telephone: (305) 296-5606

Fax: (305) 296-5189

Cell phone (optional):

Facility Contact (If different from Owner/Authorized Representative)

Name and Position Title (Plant manager or person to be contacted regarding day-to-day operations at the facility.)

Print Name and Title: N/A

Facility Contact Mailing Address

Organization/Firm:

Street Address:

City:

County:

Zip Code:

Facility Contact Telephone Numbers

Telephone:

Fax:


Cell phone (optional):

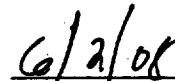
Owner/Authorized Representative Statement

This statement must be signed and dated by the person named above as owner or authorized representative

I, the undersigned, am the owner or authorized representative of the owner or operator of the facility addressed in this Air General Permit Registration Form. I hereby certify, based on information and belief formed after reasonable inquiry, that the facility addressed in this registration form is eligible for use of this air general permit and that the statements made in this registration form are true, accurate and complete. Further, I agree to operate and maintain the facility described in this registration form so as to comply with all applicable standards for control of air pollutant emissions found in the statutes of the State of Florida and rules of the Department of Environmental Protection and revisions thereof.

I will promptly notify the Department of any changes to the information contained in this registration form.


Signature


Date

Type of Facility

Check one:

Stationary Facility

Relocatable Facility

Type(s) of Reasonable Precautions Used to Prevent Unconfined Emissions

Check all precautions to be used for the management of roads, parking areas, stock piles and yards:

Pave Roads

Pave Parking Areas

Pave Yards

Maintain Roads/Parking/Yards

Use Water Application

Use Dust Suppressant

Remove Particulate Matter

Reduce Stock Pile Height

Install Wind Breaks

Check all precautions to be used for the management of drop points to trucks:

Spray Bar

Chute

Enclosure

Partial enclosure

Description of Reasonable Precautions

Below, or as an attachment to this form, provide details of all types of reasonable precautions to be used to prevent unconfined emissions at the facility.

Emissions from cement and fly ash storage silos and cement/fly ash weigh hopper will be controlled by bag houses. Emissions from truck load out will be controlled by spray ring. See enclosed exhibits for details.

Description of Facility

Below, or as an attachment to this form, provide a description of the concrete batching plant operations at the facility in sufficient detail to demonstrate the facility's eligibility for use of this air general permit and to provide a basis for tracking any future equipment or process changes at the facility. Describe all air pollutant-emitting processes and equipment at the facility, and identify any air pollution control measures or equipment used. See enclosed details.

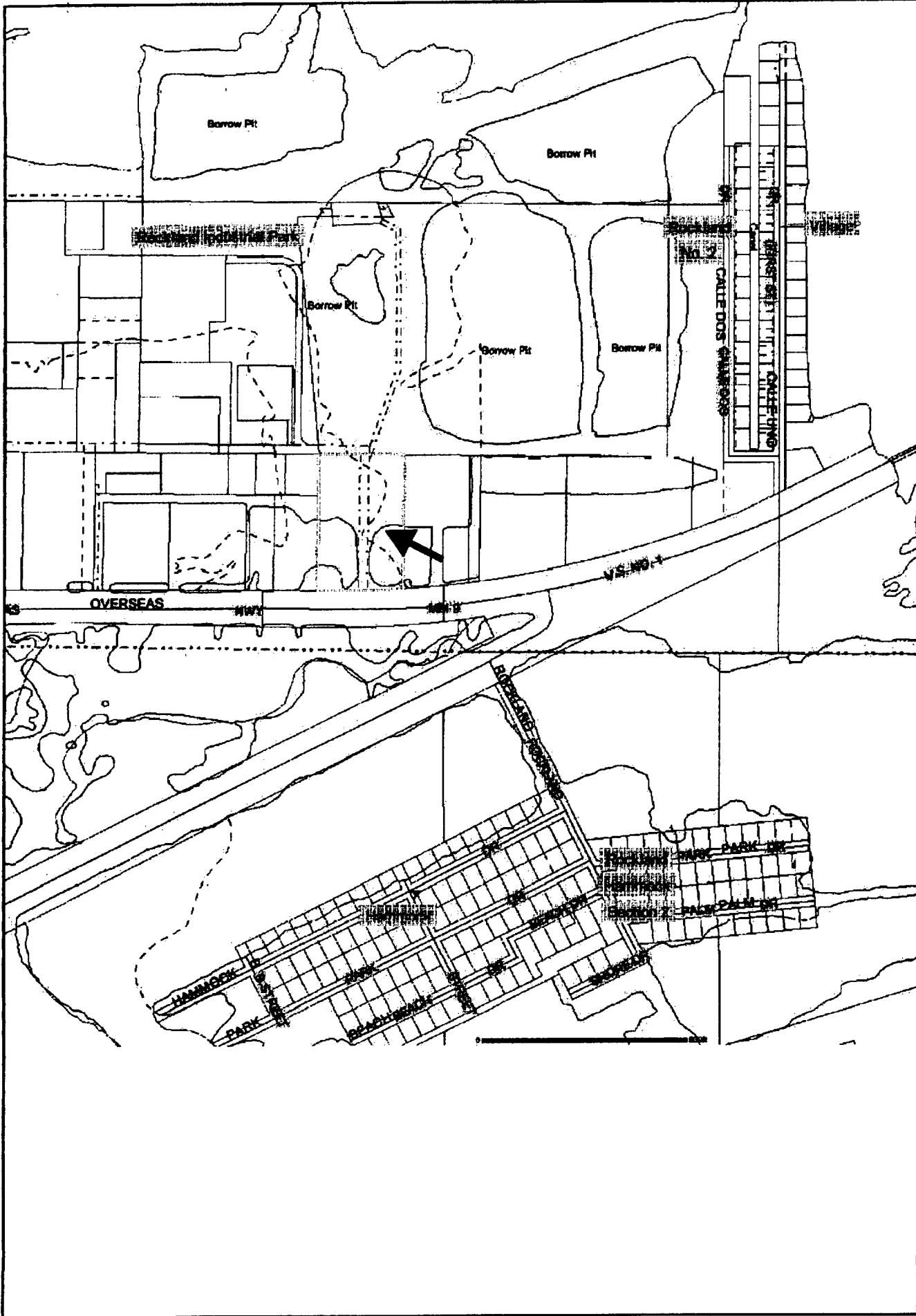
6/18/08 - 11:20 AM

PER TELEPHONE CONVERSATION W/OAR-

RICHARD TOPPINO, THE FOLLOWING APPLIES

- 1) THREE SILOS EACH HAS SEPARATE BAGHOUSE = 3 EU'S
- 2) BATCHER/WEIGHER HAS INDIVIDUAL BAGHOUSE.

D. Alibbe



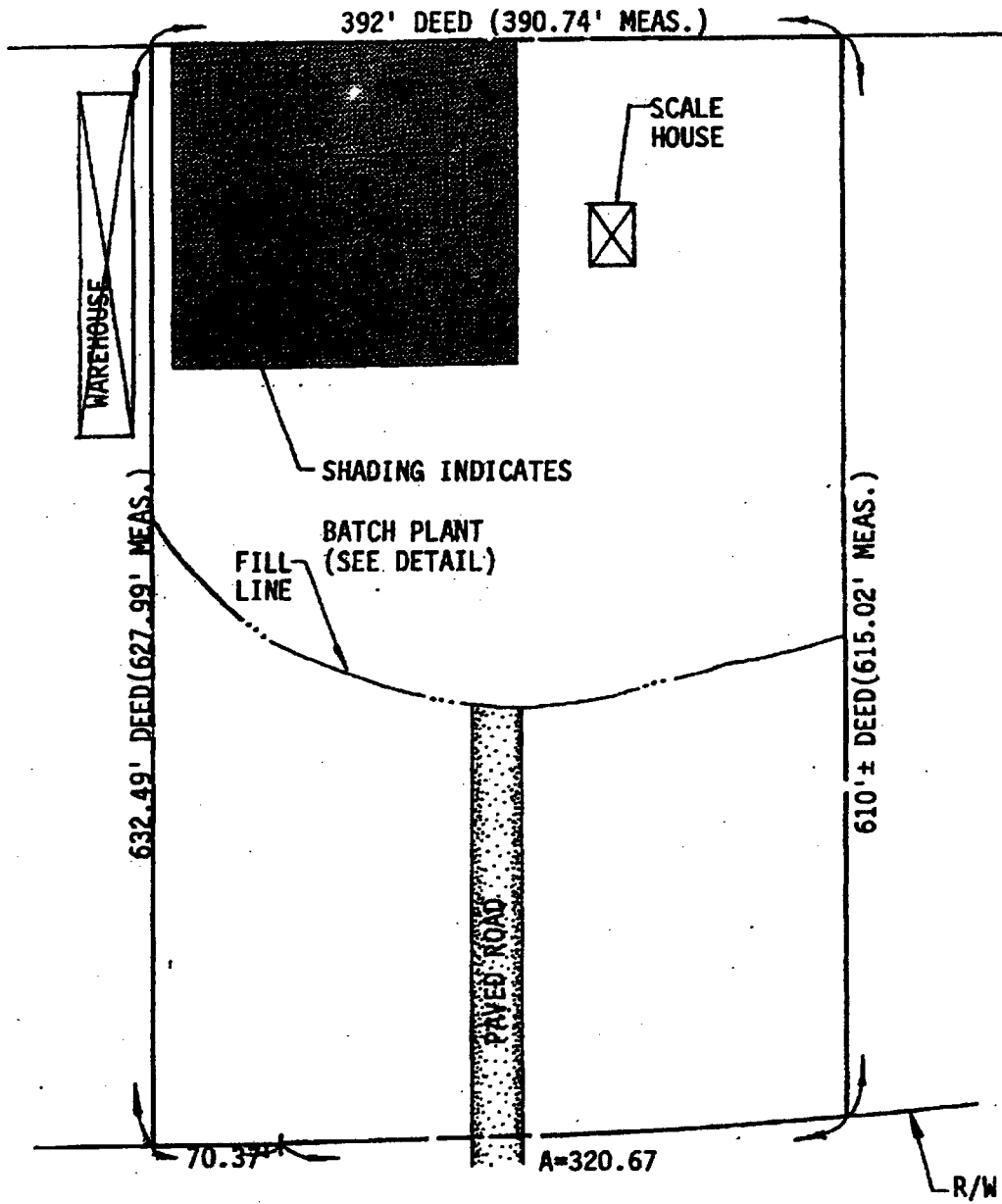
REVISIONS:

LOCATION & VICINITY MAP
SCALE: AS SHOWN

MONROE CONCRETE PRODUCTS, INC.
CONCRETE BATCH PLANT
ROCKLAND KEY, MONROE COUNTY, FL

GLEN BOE AND ASSOCIATES, INC. # 4061
5800 OVERSEAS HIGHWAY, SUITE 4, MARATHON, FL 33060
Telephone (305) 743-9121 Fax (305) 743-9197
Email: glenboe@baltcofl.net

DATE: 06/25/08



U.S. HIGHWAY NO. 1

EXHIBIT "B"-1

SITE PLAN
SCALE: 1" = 100'



REVISIONS:

MONROE CONCRETE PRODUCTS, INC.
CONCRETE BATCH PLANT
ROCKLAND KEY, MONROE COUNTY, FL

CERTIFIED BY:
SEAN KIRWAN, P.E. 06706

GLEN BOE AND ASSOCIATES, INC. # 4061
6600 OVERSEAS HIGHWAY, SUITE 4, MIAMI GARDENS, FL 33050
Telephone (305) 743-9121 Fax (305) 743-9187

DATE: 06/02/08

2

SHEET 2 OF 4

NORTH

- A 4 COMP AGGREGATE BIN
- B 300/360 BBL CEMENT BIN & BATCHER
- C 86' RADIAL STACK AGGREGATE CHARGING CONVEYOR
- D 10'x12' AGGREGATE HOPPER
- E BAG HOUSE
- F SILO

SITE DETAIL

SCALE: 1" = 30'

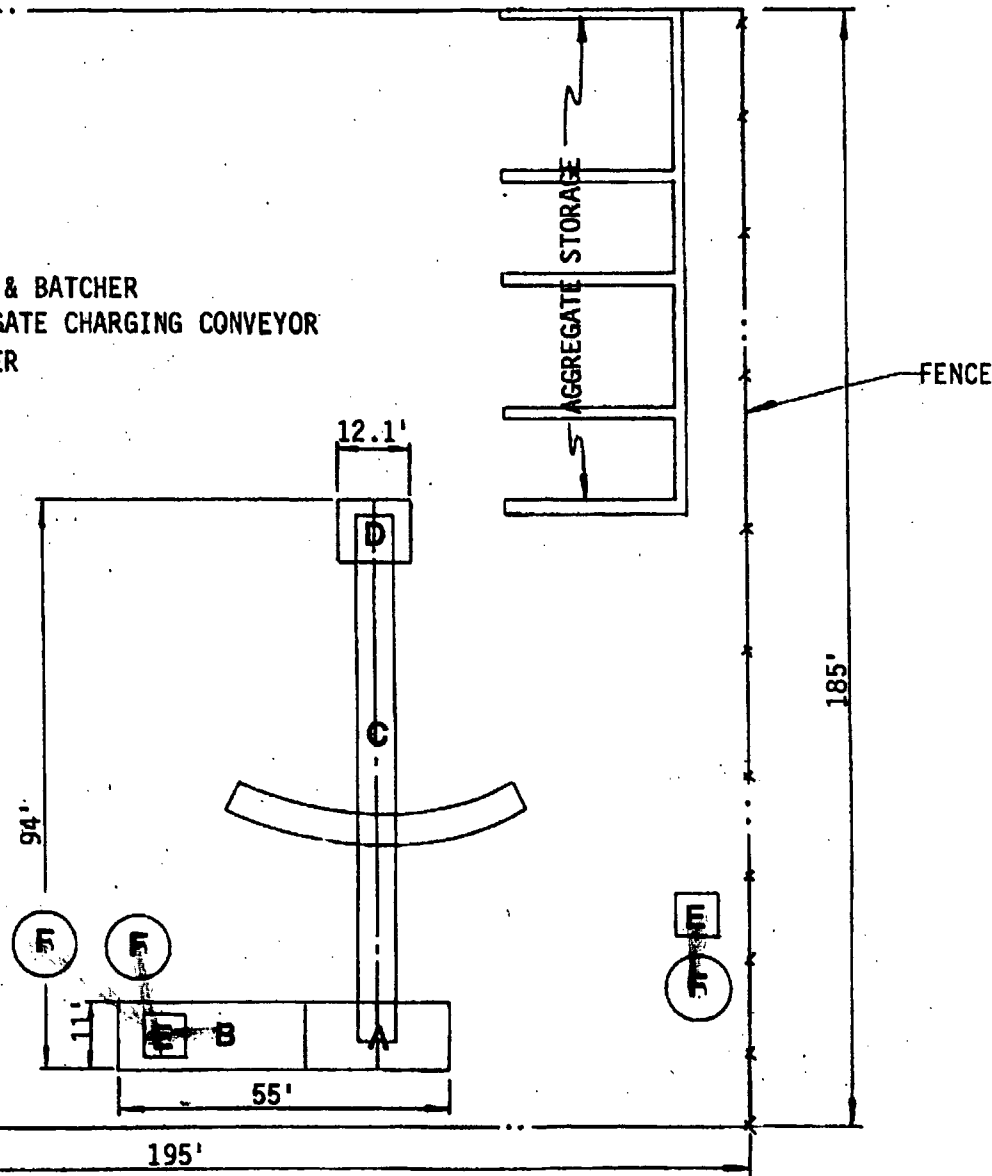


EXHIBIT 'B'-2

SHEET 3 OF 4
3

GLEN BOE AND ASSOCIATES, INC. # 4081
5800 OVERSEAS HIGHWAY, SUITE 4, MARATHON, FL 33060
Telephone (305) 743-8121 Fax (305) 743-8187

MONROE CONCRETE PRODUCTS, INC.
CONCRETE BATCH PLANT
ROCKLAND KEY, MONROE COUNTY, FL

CERTIFIED BY:
SEAN KIRWAN, P.E. #57806

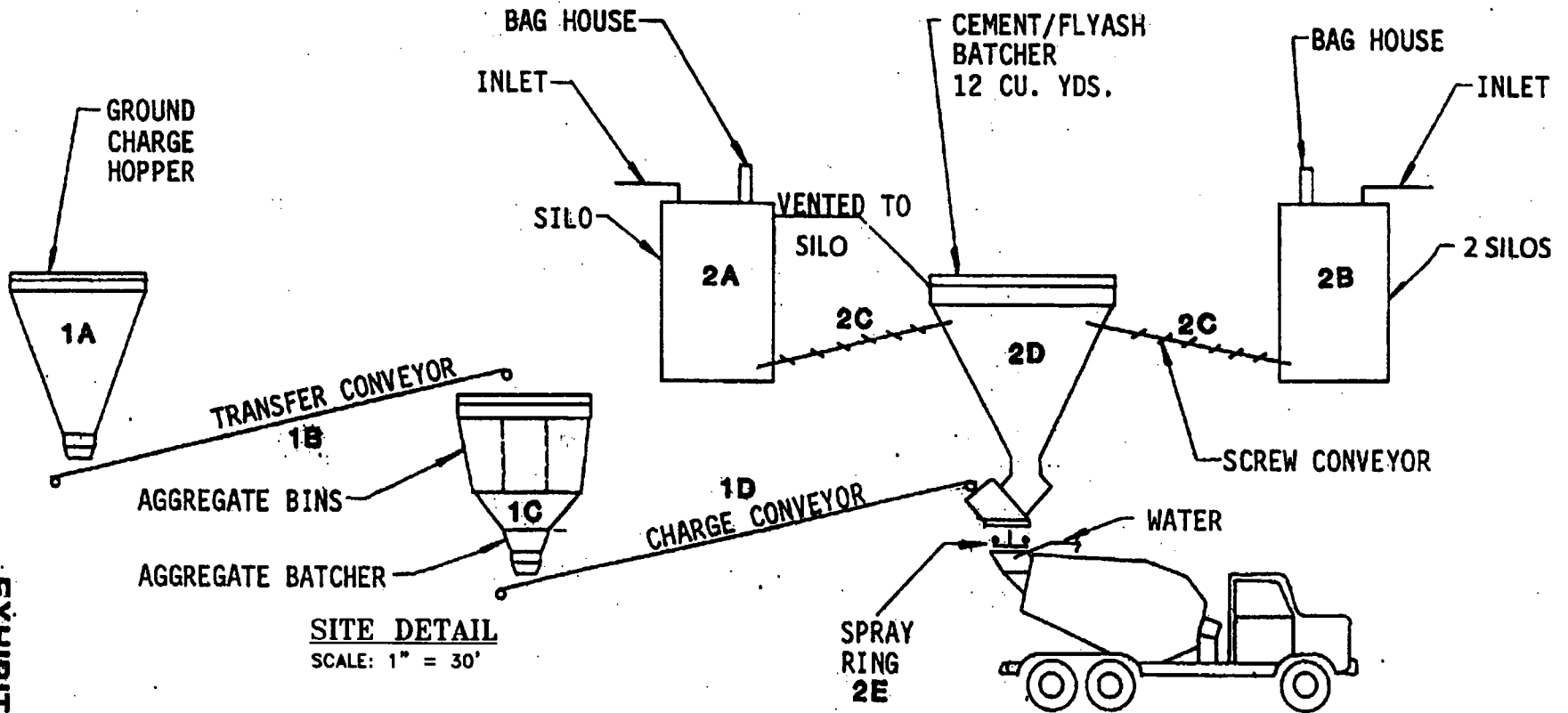
REVISIONS:

1. AGGREGATE

- A. GROUND CHARGE HOPPER
- B. TRANSFER CONVEYOR
- C. STORAGE BINS & BATCHER
- D. CHARGE CONVEYOR

2. CEMENT/FLYASH:

- A. SILO WITH BAGHOUSE
- B. 2 SILOS WITH BAGHOUSE
- C. SCREW CONVEYORS
- D. CEMENT/FLYASH BATCHER
- E. SPRAY RING



SITE DETAIL

SCALE: 1" = 30'

EXHIBIT 'C'

SHEET 4 OF 4

GLEN BOE AND ASSOCIATES, INC. # 4061
 6800 OVERSEAS HIGHWAY, SUITE 4, MARATHON, FL 33060
 Telephone (305) 743-9121 Fax (305) 743-9197

MONROE CONCRETE PRODUCTS, INC.
 CONCRETE BATCH PLANT
 ROCKLAND KEY, MONROE COUNTY, FL

CERTIFIED BY:
 SEAN KIRWAN, P.E. 067506

REVISIONS:

EMISSIONS CALCULATIONS

PRODUCTION RATE PROPOSED: 100 CYD/DAY AVERAGE
50 CYD/HR MAXIMUM

MATERIAL USE: CEMENT/FLYASH: 12.4 TONS/DAY
SAND/AGGREGATE: 85.1 TONS/DAY

MIXER TRUCK TRIPS:

$10/\text{DAY} \times 4 \text{ DAYS}/\text{WK} \times 50 \text{ WKS}/\text{YR} = 2000 \text{ TRIPS}/\text{YR}$

ANNUAL PRODUCTION: $2000 \text{ TRIPS} \times 10 \text{ CYD}/\text{TRIP} = 20,000 \text{ CYD}/\text{YR}$

UNCONTROLLED EMISSIONS

FACTORS TAKEN FROM EPA PUBLICATION " COMPILATION OF AIR
POLLUTANT EMISSION FACOTRS" SUPPLEMENT "A", OCTOBER 1986.

SAND & AGGREGATE TRANSFER TO ELEVATED BIN:	0.05 LB/CYD CONC
CEMENT UNLOADING TO SILO:	0.07
WEIGH HOPPER LOADING	0.04
TRUCK LOADING	0.04

TOTAL	0.20 LB/CYD CONC
-------	------------------

ANNUAL UNCONTROLLED EMISSIONS:

$20,000 \text{ CYD} \times 0.20 \text{ LB}/\text{CYD} = 2 \text{ TONS}/\text{YEAR}$

MAXIMUM HOURLY UNCONTROLLED EMISSIONS:

$50 \text{ CYD}/\text{HR} \times 0.20 \text{ LB}/\text{CYD} = 10 \text{ LB}/\text{HR}$

CONTROLLED EMISSIONS - CEMENT/FLYASH SILOS

$12.4 \text{ TONS}/\text{DAY} \times 4 \text{ DAYS}/\text{WK} \times 50 \text{ WKS}/\text{YR} = 2480 \text{ TONS}/\text{YR}$ USED

ASSUME 25 TONS PER DELIVERY = 100 DELIVERIES PER YEAR

ASSUME ONE DELIVERY TAKES 45 MINUTES

100 DELIVERIES @ 45 MIN = 75 HR/YR
 $0.07 \text{ LB}/\text{CYD} \text{ CONC} \times 20,000 \text{ CYD} = 1400 \text{ LB}/\text{YR}$ UNCONTROLLED
 BAGHOUSE EFFICIENCY = 99.9 % MINIMUM
 CONTROLLED EMISSIONS = $1400 \text{ LB}/\text{YR} \times (1-0.999) = 1.4 \text{ LB}/\text{YR}$

EXHIBIT "D"

CONTROLLED EMISSIONS - WEIGH HOPPER

0.04 LB/CYD CONC X 20,000 CYD = 800 LB/YR UNCONTROLLED
800 LB/YR X (1-0.999) = 0.8 LB/YR CONTROLLED

MAXIMUM HOURLY

0.04 LB/CYD X 50 CYD/HR X (1-0.999) = 0.002 LB/HR

TOTAL CONTROLLED EMISSIONS

2.2 LB/YR = 0.001 TONS/YR
0.022 LB/HR MAXIMUM

UNCONFINED EMISSIONS

AGGREGATES

Unconfined particulate emissions from transfer to storage bins and wind erosion of storage piles will be negligible. Materials are kept wet by sprinklers for product quality control.

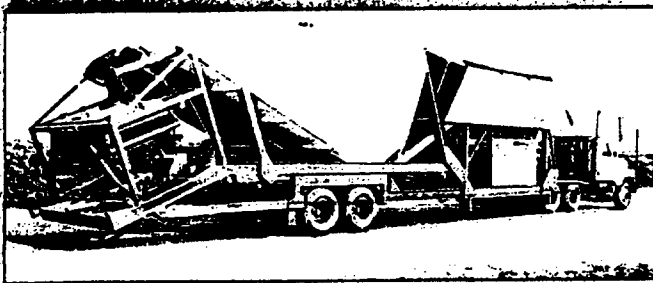
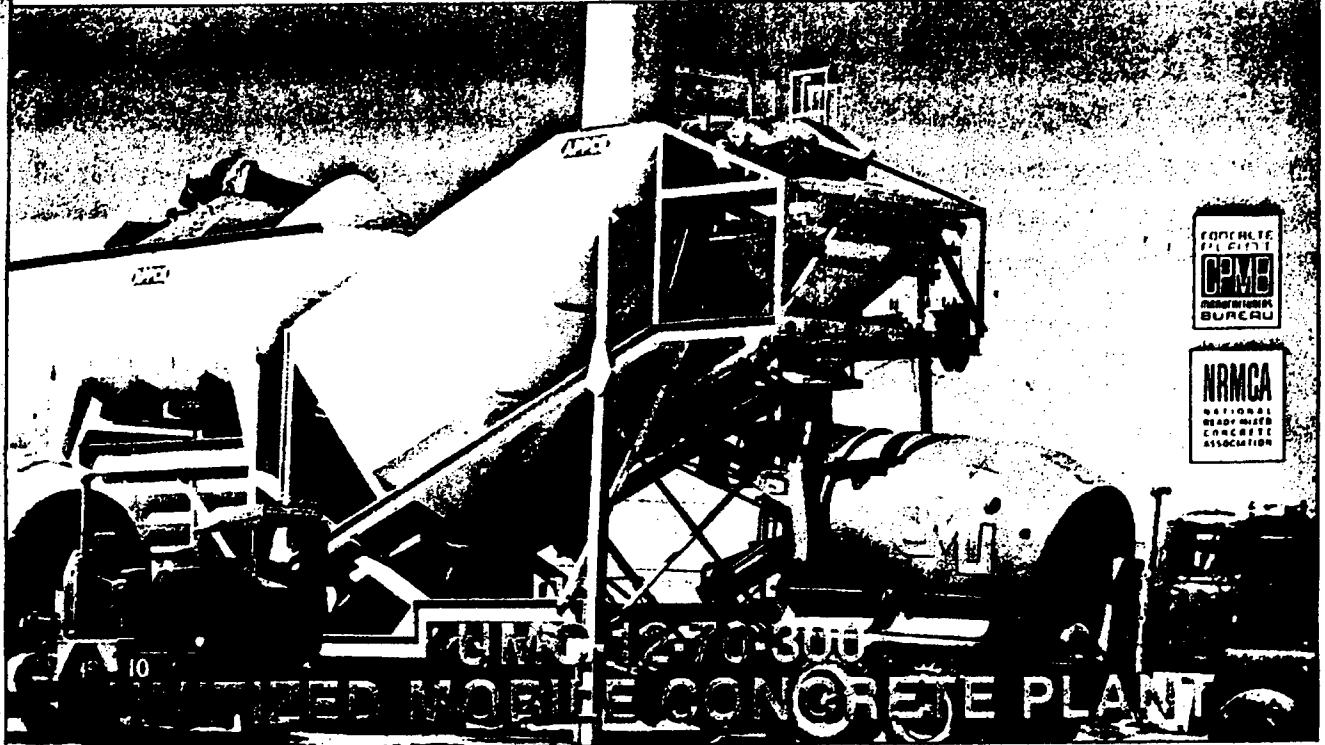
MIXER TRUCK LOADING

Unconfined particulate emissions from mixer truck loading will be controlled by boot, shroud and spray ring at loadout spout.

VEHICLE TRAFFIC

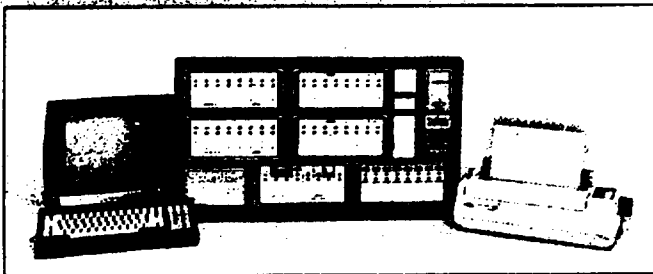
Unconfined particulate emissions from vehicular traffic on unpaved yard areas will be controlled as necessary by application of water and dust suppressants or other reasonable precautions.

BESSER APPCO



COMPLETELY MOBILE

Good balance and low 14'0" clearance allows travel almost anywhere at normal road speeds.



AUTOMATION

An ACECO Scorpion™ computer provides the ultimate in plant controls. Reed switch or alternate systems available.

THESE UMC 12-70-300 FEATURES ASSURE BATCHING EFFICIENCY

- No Cement On Belts
- Single Discharge Belt
- Easy Access To Components
- All Components Mounted On A Single Rugged Frame
- 70 - Ton 3 Compartment Folding Aggregate Bin (38.6 CY W.L., approx. 70 T CPMB)
- 300/360 bbl. Cement Bin (53 CY)
- High Capacity Twin 9" Diameter Screws
- Completely Wired, 460V, 3 Phase
- Completely Pneumatic System With Compressor Mounted On Plant
- Low 14'0" Travel Height
- One-Man Operation

EXHIBIT "E"

UMC 12-70-300 UNITIZED MOBILE CONCRETE PLANT SPECIFICATIONS

AGGREGATE BIN: 3 compartment, 38.6 CY W.L., approx. 70 T CPMB heaped capacity, 2 gates per compartment with air electric operation. Bin sides, ends and compartment plates fold down for transit.

BATCHERS: Aggregate batcher 485 CFWL (12.76 CY-CPMB rating).

12 Yd. batch requires use of all gates.

10 Yd. batch from any 2 compartments.

130 CF Cement batcher (14 CY-CPMB rating).

Cement batcher includes 6" Dia. metering discharge screw.

BELT CONVEYOR: 30"x40', 35° idlers, 600 TPH, 15 HP motor, V-belts with guard, shaft mounted speed reducer, backstop, lagged head pulley, APPCO self cleaning tail pulley, screw take-up, tail loading skirts, nip and pinch guards and lined head discharge chute.

CEMENT BIN: 53 CY, 300/360 bbls. CPMB rating, all welded, quick latch manhole, bin-flo pad aeration. 4" diameter fill pipe — APPCO Model 16-40 silo filter vent.

SCREW CONVEYORS: 2-9" diameter x 24' long, 15 HP drives, approximately 2,500 lbs./min. batching rate per screw, XX-heavy helicoid flighting, anti-friction end bearings, white iron intermediate bearings in hanger boxes, V-belt guards.

WATER METER: 3" Badger, turbine

AIR COMPRESSOR: 15 HP, 120 gal. 200 PSI receiver.

AIR PIPING: Factory installed, lubro-control unit, moisture trap, regulator, guage, individual air cylinder oilers, chemical element moisture trap for aeration system.

ELECTRICAL SYSTEM: 460 V, 3 phase, NEMA, combination starter-disconnects.

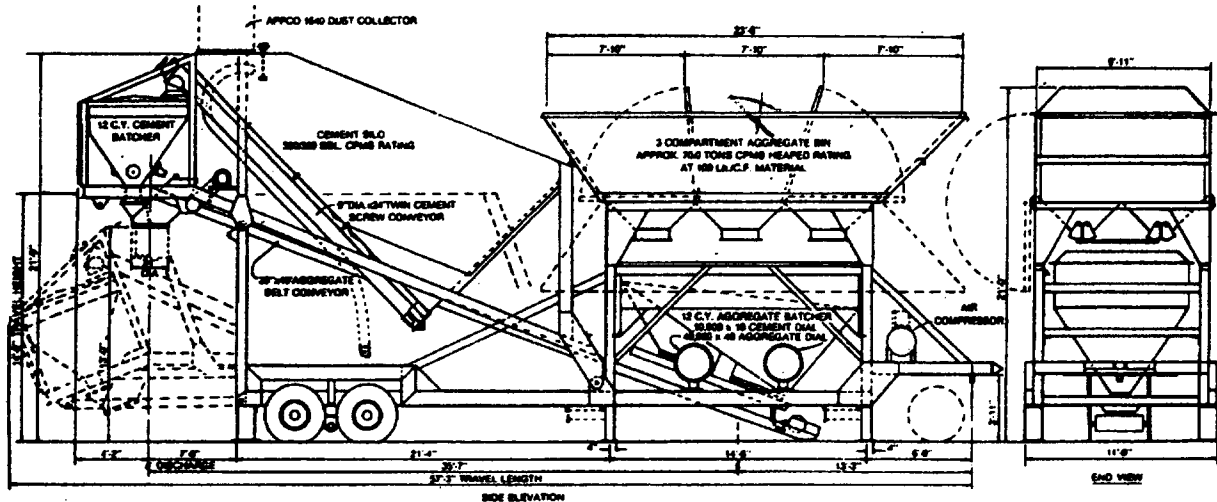
PLANT CONTROLS: Manual pushbutton air/electric controls are standard equipment. Semi-automatic reed switch or fully automated controls such as ACECO Scorpion™ are available.

RUNNING GEAR: 36,000 lb. tandem axles, Budd wheels, dual 11:00 x 20-12 ply-rated tires, air brakes. Standard truck-fifth wheel, and king pin. Tandem axle tractor required.

OPTIONAL EQUIPMENT

- 140 Ton overhead aggregate bin. (other sizes available)
- Radial stacking/feed conveyor with FEL hopper.
- Auxiliary cement/fly ash silos.
- Bag house dust collector for truck charging point.

DIMENSIONS:	Travel Position	Operating Position
Height	14'0"	21'0" Bin Charging Height 21'9" Top of Cement Structure
Width	11'0"	9'11" Bin Width
Length	57'3"	53'4"
Weight	52,000 lbs.	



DISTRIBUTED BY:

JANSON-Geological Equipment Co.
P.O. Box 70 Dunwoody, GA 30447
Tel. 407-731-4107 FAX 407-731-4225

BESSER

Appco Division

442 N. W. W. White Road, 78219-2811 = P.O. Box 1198 = San Antonio, Texas 78294-1198 = Phone: (210) 333-1111 = Fax: (210) 333-1508
UMC-12-70-300

Scorpion 1000™

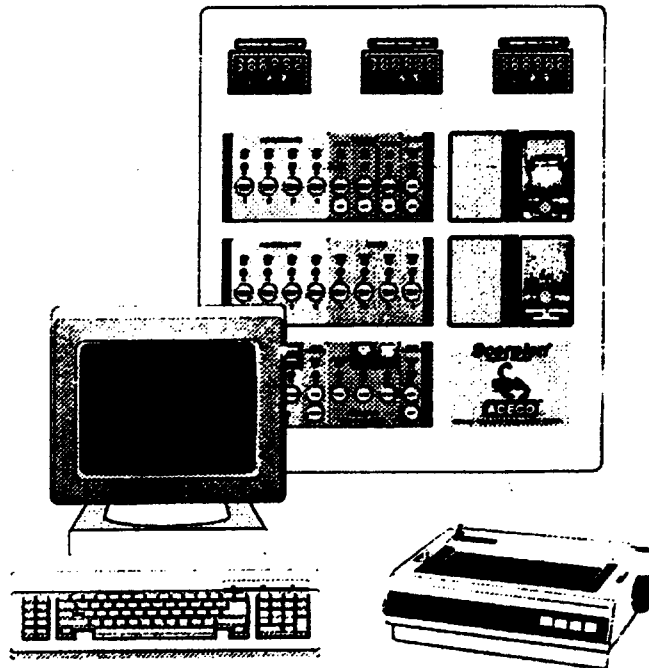
Automatic Batching System

A complete automatic batching system for your concrete batch plant. The *Scorpion 1000™* is specifically designed to make manual batch panels obsolete! It makes use of the latest technology in microcomputer based automation. Most importantly, it is very affordable!

Standard Features

- Aggregate Scale Interface
- Cement Scale Interface
- 4 Weighed Aggregates
- 2 Weighed Cements
- 1 Metered Water
- Automatic Discharge
- Automatic Scale Vibrate Control
- Automatic Freefall Compensation
- Automatic Moisture Compensation
- Automatic Zero Compensation
- Scale Motion Detection
- Automatic Jog Control
- 70 Mix Designs
- Lithium Battery Backup
- Easy Operation
- High Reliability
- Manual Controls
- Wall Mount I/O Enclosure
- And More !

*Scorpion 1000 shown with some optional features installed. Your system configuration may vary.



Optional Features

- 4 Additional Aggregates
- 2 Additional Cements
- 2 Stage Cement Control
- Water Scale Interface
- 1 Additional Water
- 4 Metered Admixtures
- Scale Digital Readouts

The *Scorpion 1000™* system offers a lot of flexibility. If you have control system requirements not listed in the standard or optional features, please speak with us about it. There is a good chance the *Scorpion 1000™* already has the capability you need!

And best of all... The Price !

To see how little, please contact ACECO Sales at:

ACECO™

5355 DIETRICH ROAD
P.O. BOX 200264

SAN ANTONIO, TEXAS 78220-0264
(800) 676-4111 FAX (210) 662-6177

Jordan-Camacho Equipment Co.
P.O. Box 70 Dancy Beach, FL 33447
Ph. 407-751-4107 FAX 407-751-4226

MODEL DCS-260

At BESSER Appco Division, we understand that dust collection systems are a key element of concrete batch plants. That's why our dust collectors not only address the environmental issues of dust emissions, we also offer systems that will reclaim the collected materials for economic purposes.



Johnson-Gallagher Equipment Co.
P.O. Box 70 Delray Beach, FL 33447
Ph. 407-731-4107 FAX 407-731-4226

DESIGNED FOR:

The Model DCS-260 is designed for the ready mix plants, factories, processing plants and most types of industrial areas requiring dust control.

FEATURES:

Compact, complete and ready to install, a heavy duty fourteen gauge enclosure is primed and enameled to assure maximum protection. A ten inch high mounting base is standard, permitting easy installation.

BAG DESCRIPTION:

The DCS-260 is equipped with forty-two (42) 4 1/2 inch x 67 inch spun polyester snap-in collection bags providing 260 square feet of filter area.

FILTERING VELOCITY:

2.12 FPM

FILTERING EFFICIENCY:

99.9% Minimum

FLOW RATE:

550 CFM from bulk truck.

BAG CLEANING METHOD:

The bag shaker is powered by a heavy duty 1/3 horse power 120V-60 Hz, 1800 RPM electric shaker motor with V-Belt Drive to Eccentric shaft.

OPTIONS:

Five Minute Timer

Five (5) Horse Power Blower Package

NOTE:

The above data represents performance which can be expected from BESSER Appco Division Dust Collection Equipment. Continued performance at design levels is achieved through comprehensive maintenance programs.

BESSER Appco Division

BESSER

Appco Division

PHONE (210) 333-1111
FAX (210) 333-1508

P.O. BOX 1198
SAN ANTONIO, TEXAS 78294-1198

August 26, 1994

MANUFACTURER: BESSER Appco Division

PART NUMBER: Model DCS 260

DESCRIPTION: Bag Type Filter Vent

EQUIPMENT CHARACTERISTICS:

BAG DIAMETER: 4 1/2"

BAG LENGTH: 67"

NO. OF BAGS: 42

BAG ROWS WILL BE: Straight

W.W. BETWEEN BAG ROWS: No

FILTERING METHOD: Spun Polyester

BAG CLEANING METHOD: Mechanical Motor Driven Vibrator

BAG CLEANING CYCLE: After Each Truck

BAG SURFACE AREA: 265 S.F. (Total)

FLOW RATE: 550 ACFM

FILTERING VELOCITY: 2.12 FPM

FILTERING EFFICIENCY: 99.9% (Minimum)

PARTICULATE GRAIN LOADING: Less than 0.01 Grains/ACFM (Outlet)

Note: The above Data is a representative of the performance which can be expected from a unit of BESSER Appco Division. While this unit is designed to operate with minimal maintenance, its continued performance at design levels will require attention by the Purchaser's service staff.

WIDTH 31"
DEPTH 36"
HEIGHT 92"

POINT NUMBER:

MFG. & PART NO: BESSER APPCO MODEL DCS 260

FLOW RATE: 550 ACFM

GAS STREAM TEMPERATURE: AMBIENT

PARTICULATE

GRAIN LOADING: INLET - 25 GRAINS/ACF
 OUTLET - 0.03 GRAINS/ACF

PRESSURE DROP: 2-6 IN. H2O

WATER VAPOR CONTENT: RELATIVE

FAN REQUIREMENTS: NOT APPLICABLE

PARTICULATE DISTRIBUTION: MICRON RANGE INLET OUTLET

MICRON RANGE	INLET	OUTLET
0.0 - 0.5	0%	0%
0.5 - 1.0	0%	0%
1.0 - 5.0	30%	0%
5.0 - 10.0	30%	.5%
10.0 - 20.0	30%	.5%
OVER 20	10%	1%

FILTERING VELOCITY: 2.12 ACFM

BAG DIAMETER: 4 1/2"

BAG LENGTH: 5'-7"

NO. OF BAGS: 42

NO. OF COMPONENTS: 1

BAG ROWS WILL BE: INLINE

W.W. BETWEEN BAG BANKS: NO

FILTERING MATERIAL: COTTON SATEEN

BAG CLEANING METHOD: MECHANICAL MOTOR DRIVEN VIBRATOR

BAG CLEANING CYCLE: AFTER EACH TRUCK

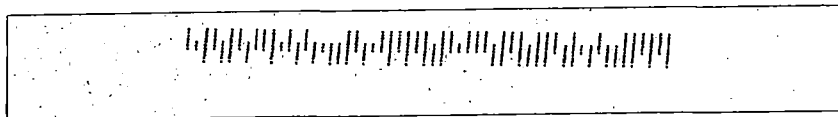
CAPITOL INSTALLED COST:

ANNUAL OPERATING COST:

MONROE CONCRETE PRODUCTS, INC.

P.O. BOX 1149

KEY WEST, FL. 33041



FL. DEPT. OF ENVIRONMENTAL PROTECTION

RECEIPTS

P.O. BOX 3070

TALLAHASSEE, FLORIDA

32315

⊗ APPLIC. FOR AIR PERMIT

Monroe Concrete Products, Inc. P.O. Drawer 1149, Key West, Florida 33041

026449

Invoice No	Gross Amount	Discount	Invoice No	Gross Amount	Discount	Invoice No	Gross Amount	Discount
AIR PERMIT	100.00	0.00						

Vendor 000000 FL DEPT OF ENVIRO PROT Check No 00026449 06/10/2008 Gross: 100.00 Disc: 0.00 Net: 100.00

**Florida Department of Environmental Protection
 Cash Receiving Application (CRA)
 Cashlisting by Deposit #: 281716 thru 281716
 Printed: 6/12/2008 4:30:28 PM - Page 8**

Cashlisting: **69024** Cashlist Area: **3755** Description: **DIV OF AIR RESOURCES MGMT.**
 Deposit No: **281716** Date Deposited: **06/12/2008** Contact: **E. WALKER**

Object	Transmittal	Dep DDN	Receipt Number	Pre-Numbered Receipt	Name	Check Number	Payment Amount	Reference Account	Payment Number	Remittance Number	Fund	Grant	
002272	48950	483892	628104		ST. PETERSBURG, CITY OF	583460	\$100.00		885689	785390	PFTF		
	48950	483910	628122		MONROE CONCRETE PRODUCTS, INC.	026449	\$100.00	<i>6/18/2008 7775010-005</i>	885723	785408	PFTF		
Object Code 002272 Subtotal:							\$200.00						
Cashlisting 69024 Total:							\$200.00						