

**NONMETALLIC MINERAL PROCESSING PLANT (CRUSHER)  
AIR GENERAL PERMIT EXAMPLE REGISTRATION WORKSHEET**

Facility Identification Number - If known (seven digit number)

0990677-002

0990677

**Registration Type**

Check one:

**INITIAL REGISTRATION - Notification of intent to:**

- Construct and operate a proposed new facility.
- Operate an existing permitted facility not currently using an air general permit (e.g., a facility proposing to go from an air operation permit to an air general permit). If the facility currently holds one or more air operation permits, such permit(s) must be surrendered by the owner or operator upon the effective date of this air general permit. (See "Surrender of Existing Air Operation Permit(s)" below.)
- Operates an existing facility not currently permitted or using an air general permit.

**RE-REGISTRATION (for facilities currently using an air general permit) - Notification of intent to:**

- Continue operating the facility after expiration of the current term of air general permit use.
- Continue operating the facility after a change of ownership.
- Make an equipment change requiring re-registration pursuant to Rule 62-210.310(2)(e), F.A.C.
- Any other change not considered an administrative correction under Rule 62-210.310(2)(d), F.A.C.

**Surrender of Existing Air Operation Permit(s) - For Initial Registrations Only, if Applicable**

All existing air operation permits for this facility are hereby surrendered upon the effective date of this air general permit; specifically permit number(s):

**General Facility Information**

Facility Owner/Company Name (Name of corporation, agency, or individual owner who or which owns, leases, operates, controls, or supervises the facility.)

D. S. Eakins Const. Corp.

Site Name (Name, if any, of the facility site; e.g., Plant A, Metropolis Plant, etc. If more than one facility is owned, a complete registration must be submitted for each.)

Benoist Farms Concrete Recycling

Facility Location (Physical location of the facility, not necessarily the mailing address.)

Street Address: 550 Benoist Farms Rd.

City: West Palm Beach, FL

County: Palm Beach

Zip Code: 33411

Facility Start-Up Date (Estimated start-up date of proposed new facility.)(N/A for existing facility.)

N/A

FLORIDA DEPARTMENT OF  
ENVIRONMENTAL PROTECTION  
2013 APR 24 AM 9:48  
FINANCE & ACCOUNTING  
REVENUE

**Facility Contact**

Name and Position Title (Plant manager or person to be contacted regarding day-to-day operations at the facility.)

Print Name and Title: Steven Eakins VP

Facility Contact Telephone Numbers

Telephone: 561-842-0001

Fax: 561-842-0009

Cell phone: 561-346-1549

E-mail: steve@dseakins.com

Facility Contact Mailing Address

Organization/Firm: D. S. Eakins Const. Corp

Mailing Address: 1481 Kinetic Rd.

City: Lake Park, FL

County: Palm Beach

Zip Code: 33403

**Correspondence Contact/Representative (to serve as additional Department contact)**

Name and Position Title

Print Name and Title: Douglas S. Eakins Pres.

Correspondence Contact/Representative Telephone Numbers

Telephone: 561-842-0001

Fax: 561-842-0009

Cell phone: 561-346-0266

E-mail: doug@dseakins.com

Correspondence Contact/Representative Mailing Address

Organization/Firm: \_\_\_\_\_

Mailing Address: \_\_\_\_\_

City: \_\_\_\_\_

County: \_\_\_\_\_

Zip Code: \_\_\_\_\_

**Government Facility Code (check only one)**

- Facility not owned or operated by a federal, state, or local government.
- Facility owned or operated by the federal government.
- Facility owned or operated by the state.
- Facility owned or operated by the county.
- Facility owned or operated by the municipality.
- Facility owned or operated by a water management district.

2019 APR 24 AM 9:48  
FINANCE & ACCOUNTING  
REVENUE  
FLORIDA DEPARTMENT OF  
ENVIRONMENTAL PROTECTION

**Type of Facility**

Check one:  
 Stationary Facility                       Relocatable Facility

**Type(s) of Precautions Used to Prevent Unconfined Emissions**

Check all that apply for the management of roads, parking areas, stock piles and yards:

Maintain Roads/Parking/Yards       Use Water Application       Use Dust Suppressant  
 Remove Particulate Matter               Reduce Stock Pile Height       Install Wind Breaks

Check the location of spray bars at the nonmetallic mineral processing plant:

Feeders     Entrance to "Crusher"               Exit of "Crusher"  
 Classifier Screens                               Conveyor Drop Points

**Emission Unit Details**

COMPONENT DESCRIPTION (e.g. primary, secondary crusher, screener, conveyor, RICE* engine and fuel type, etc.)	MANUFACTURER	DATE OF MANUFACTURE	MODEL NUMBER	SERIAL NUMBER	RATED CAPACITY (tons/hr, hp)	SUBJECT TO 40 CFR, PART 60, SUBPART 000 (Yes or No)**
primary crusher	Excel	1988	2500	J1188042D	250 ton/hr	yes
secondary crusher	Eagle	2004	500-05CV	30015	100 ton/hr	
Screener	Allis Chalmers	1988	6X16 TD	C538803	250 ton/hr	
Screener	Eagle	2004	65D006	22445	250 ton/hr	
Screener	Nordberg	1999	CV150D	675	80 ton/hr	
Screener	The Screen machine	2006	107T	1931	100 ton/hr	
conveyor	Excel	2005	30X100	00501	200 ton/hr	
conveyor	Excel	1988	36X60	N/A	250 ton/hr	
conveyor	Excel	2005	36X80	00500	250 ton/hr	
conveyor	Superior	1988	30X60	90488	150 ton/hr	
conveyor	Custom built	2000	36X100	N/A	250 ton/hr	
conveyor	Custom built	2000	36X100R	N/A	250 ton/hr	
conveyor	Eagle	1988	30X50	N/A	150 ton/hr	
conveyor	Superior	1988	30X50	95788	150 ton/hr	
conveyor	Barber Green	N/A	PX5024X50	A793	100 ton/hr	
conveyor	Excel	2007	30X50	00776	100 ton/hr	
conveyor	Custom built	1988	36X35	N/A	250 ton/hr	
conveyor	Excel	1988	48X30	N/A	250 ton/hr	

\*RICE: Reciprocating Internal Combustion Engine

\*\*NMMP Facilities subject to Subpart 000:

Stationary sand and gravel plants with a machine (or a maximum) rated capacity greater than 150 tons per hour  
 Portable sand and gravel plants with a machine (or a maximum) rated capacity greater than 25 tons per hour  
 Clay and pumice plants with a machine (or a maximum) rated capacity greater than 10 tons per hour

FLORIDA DEPARTMENT OF ENVIRONMENTAL PROTECTION  
 2013 APR 24 AM 9:48  
 FINANCE & ACCOUNTING

**Description of Facility**

Below, or as an attachment to this worksheet, provide a description of the nonmetallic mineral processing plant operations at the facility in sufficient detail to demonstrate the facility's eligibility for use of this air general permit and to provide a basis for tracking any future equipment or process changes at the facility. Describe material(s) processed, all air pollutant-emitting processes, and identify any air pollution control measures used. Mobile source equipment information is not needed (eg.: trucks, bulldozers, front-end loaders, etc.)

See attached map

**Helpful Definitions:**

**"Capacity"** – Per 40 CFR 60.671, the cumulative rated capacity of all initial crushers that are part of the plant.

**"Department" or "DEP"** - The State of Florida Department of Environmental Protection.

**"Emissions Unit"** - Any part or activity of a facility that emits or has the potential to emit any air pollutant.

**"Facility"** - All of the emissions units which are located on one or more contiguous or adjacent properties, and which are under the control of the same person (or persons under common control).

**"Owner" or "Operator"** - Any person or entity who or which owns, leases, operates, controls or supervises an emissions unit or facility.

**"Nonmetallic Mineral Processing Plant"** – Per 40 CFR 60.671, any combination of equipment that is used to crush or grind any nonmetallic mineral wherever located, including lime plants, power plants, steel mills, asphalt concrete plants, portland cement plants or any other facility processing nonmetallic minerals except as provided in 40 CFR §60.670 (b) and (c).

**"Relocatable Facility"** - A facility such as, but not limited to, an asphalt plant, portable power generator, or relocatable nonmetallic mineral processing plant, which is designed to be physically moved to, and operated on, different sites by being wholly or partially dismantled and re-erected in essentially the same configuration. It shall not be operable while in transit.

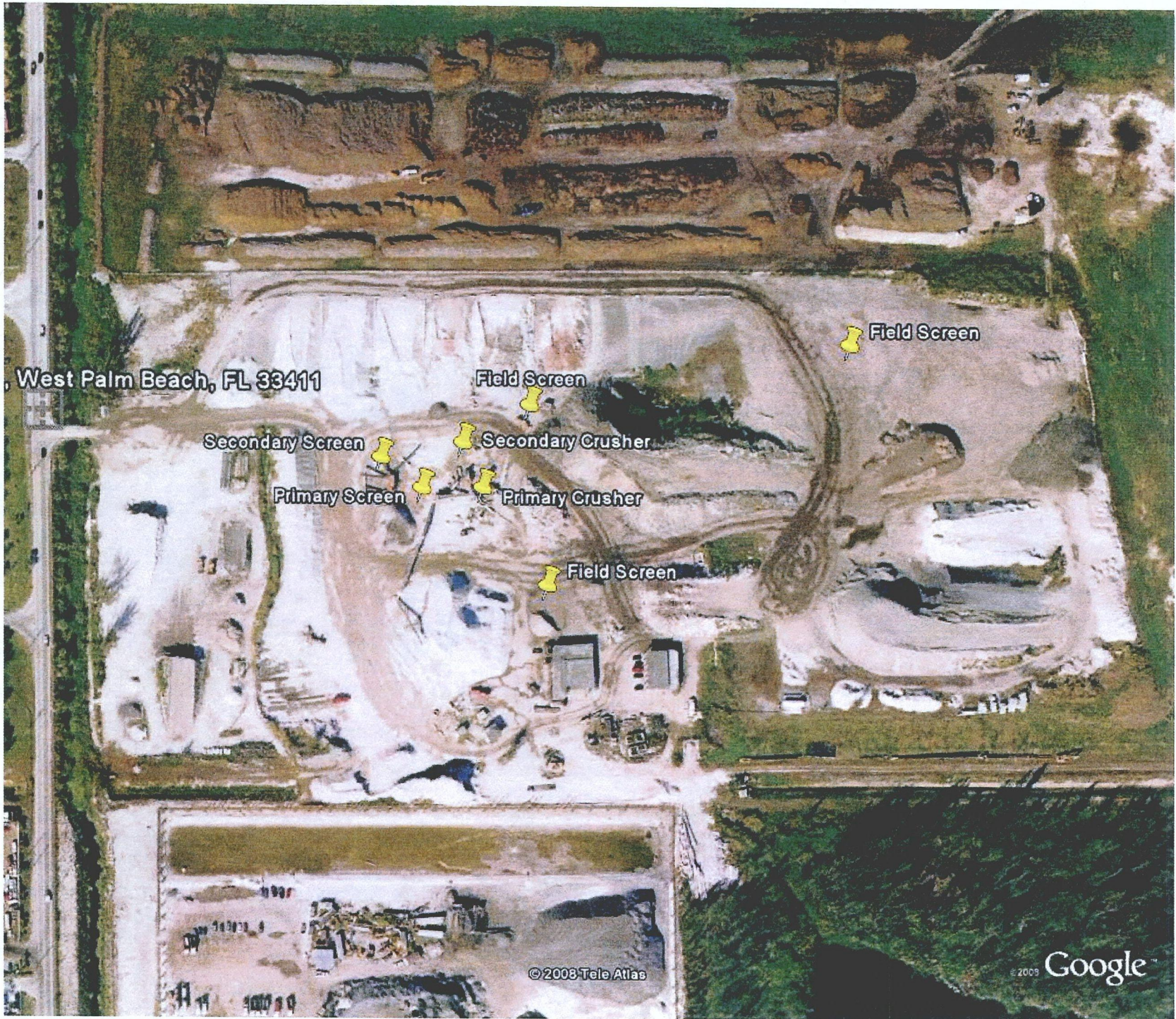
**"Screening Operation"** – Per 40 CFR 60.671, a device for separating material according to size by passing undersize material through one or more mesh surfaces (screens) in series and retaining oversize material on the mesh surfaces (screens). Grizzly feeders associated with truck dumping and static (non-moving) grizzlies used anywhere in the nonmetallic mineral processing plant are not considered to be screening operations.

**"Size"** – Per 40 CFR 60.671, the rated capacity in tons per hour of a crusher, grinding mill, bucket elevator, bagging operation, or enclosed truck or railcar loading station; the total surface area of the top screen of a screening operation; the width of a conveyor belt; and the rated capacity in tons per hour of a storage bin.

**"Unconfined Emissions"** - Emissions which escape and become airborne from unenclosed operations or which are emitted into the atmosphere without being conducted through a stack.

FLORIDA DEPARTMENT OF ENVIRONMENTAL PROTECTION  
2009 APR 24 AM 9:48  
TAXES & ACCOUNTING  
RECEIVED





West Palm Beach, FL 33411

Field Screen

Field Screen

Secondary Screen

Secondary Crusher

Primary Screen

Primary Crusher

Field Screen

© 2008 Tele Atlas

© 2008 Google