

Type of Facility

Check one:

Stationary Facility

Relocatable Facility

Type(s) of Reasonable Precautions Used to Prevent Unconfined Emissions

Check all precautions to be used for the management of roads, parking areas, stock piles and yards:

Pave Roads

Pave Parking Areas

Pave Yards

Maintain Roads/Parking/Yards

Use Water Application

Use Dust Suppressant

Remove Particulate Matter

Reduce Stock Pile Height

Install Wind Breaks

Check all precautions to be used for the management of drop points to trucks:

Spray Bar

Chute

Enclosure

Partial enclosure

Description of Reasonable Precautions

Below, or as an attachment to this form, provide details of all types of reasonable precautions to be used to prevent unconfined emissions at the facility. The entire facility is paved with concrete, and washed down as required. No material or product is stored on grade external to the plant. Sand and cement are received by tank truck and to the silos by pneumatic conveyor. All mixing, blending, and bagging is performed in a fully enclosed building (Except for doors). There are no belt conveyors or transfer points at this facility. All product is bagged and stored inside the building until loaded on flat bed trucks for delivery.

Description of Facility

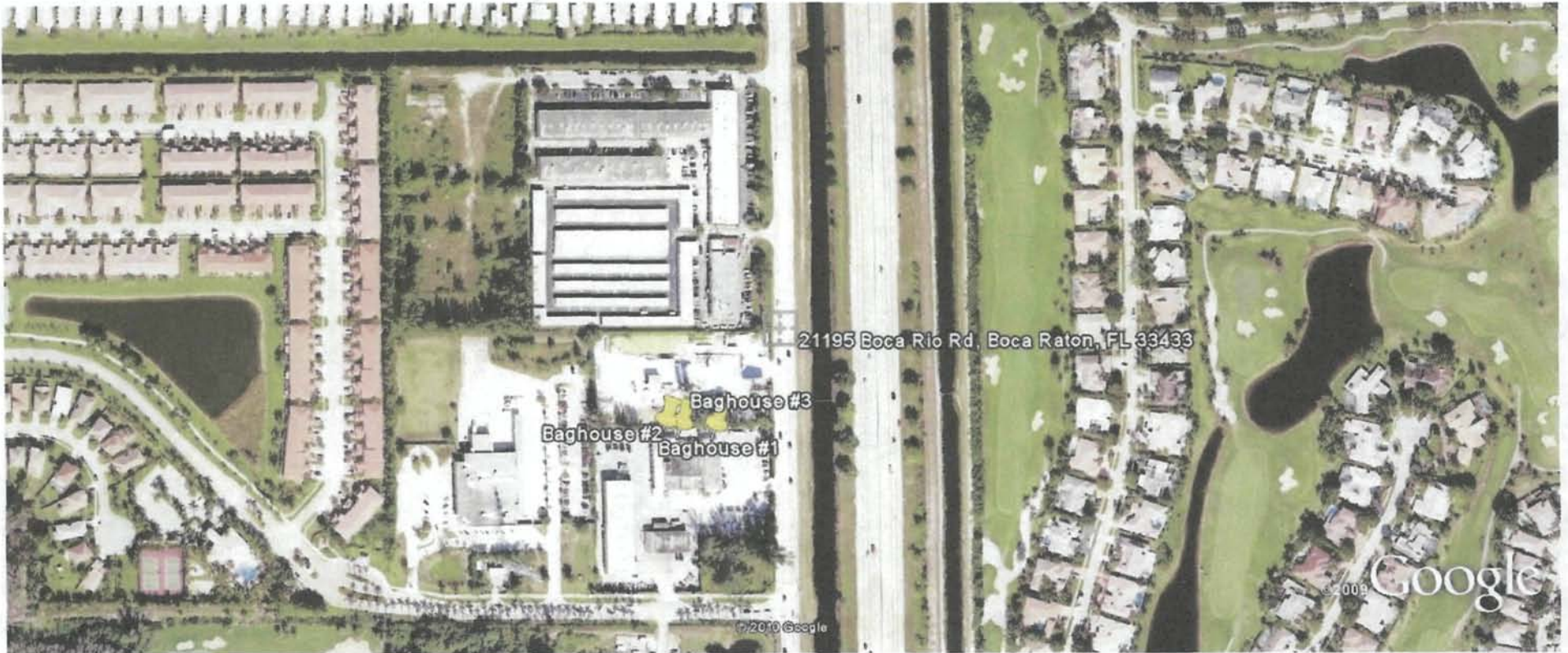
Below, or as an attachment to this form, provide a description of the concrete batching plant operations at the facility in sufficient detail to demonstrate the facility's eligibility for use of this air general permit and to provide a basis for tracking any future equipment or process changes at the facility. Describe all air pollutant-emitting processes and equipment at the facility, and identify any air pollution control measures or equipment used. This facility is a single emission unit with three emission points. The emission unit produces bagged stucco mix intended primarily for the construction and repair of swimming pools.

Emission point #1 consists of two dry mixers and six small silos. The mixers and four of the silos are inside the plant building, two silos are located at the East end of the facilities North wall along with a locally manufactured baghouse. Each of the six silos has a capacity of about 600 cu. ft. and is filled by pneumatic conveyor directly from a tank truck. The locally manufactured baghouse serves all six silos. The baghouse is a shaker unit and contains 36, 6 in diameter by 78 in long bags for a total cleaning area of 367 sq.ft. and operating at 3.5:1 air to cloth ratio (based on 1300 cfm of pneumatic transfer air) The emission point does not have its own fan. Given the location of the fill pipes for the silos it would be difficult if not impossible to fill more than one silo at a time.

Emission point #2 consists of a dry mixer served by a BHA dust collector and New York Blower fan. The mixer is located inside the plant building. The BHA baghouse is a 16 bag pulse cleaned unit. the bags are 6.25 in. diameter and 81 in. long. The bags are "pulse pleat" giving the collector a total cloth area of 930 sq. ft. and an air to cloth ratio of 1.94:1. The New York Blower fan is rated at 1800 cfm and 10" wg

Emission point #3 consists of a dry mixer and two silos served by a BHA dust collector and New York Blower fan, as with point #2 the mixer is located in the building, however the two 1130 cu.ft. silos and dust collector are located along the North wall of the plant at the West end. The dust collector and fan are identical to emission point #2, however the fan is rated at 2500 cfm at 10i" wg and the air to cloth ratio is 2.7:1.

Pictures of the existing units and a "Google" map of the facility follow.



21195 Boca Rio Rd, Boca Raton, FL 33433

Baghouse #3

Baghouse #2

Baghouse #1

© 2010 Google

Google



21195 Boca Rio Rd, Boca Raton, FL 33433

Florida Stucco Corporation
21195 Boca Rio Rd
Boca Raton, FL 33433

Please disregard the print in red on the photos



Dust Collector #2 is in the foreground and dust collector #3 is the rusty one to the left in the background. The red arrow points to the discharge of the fan serving DC #3. The picture was taken from the roof of the plant looking WNW

Brooks & Associates
5068 NW 85th Rd.
Coral Springs, FL 33067

Florida Stucco Corporation
21195 Boca Rio Rd
Boca Raton, FL 33433



This photo is of the lower part of DC#2 and its fan. Photo is taken from the roof of the plant looking NW

Brooks & Associates
5068 NW 85th Rd.
Coral Springs, FL 33067

Florida Stucco Corporation
21195 Boca Rio Rd
Boca Raton, FL 33433



This photo is of DC#1 taken from grade looking West. Note the close proximity of the tank truck.

Brooks & Associates
5068 NW 85th Rd.
Coral Springs, FL 33067

Brooks & Associates, Inc.
Engineering and Environmental Consulting

9 February 2010

Mr. Dickson Dibble
Florida DEP
Air Resources
Air General Permit Program

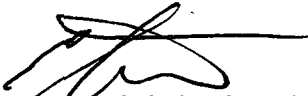
RE: Florida Stucco Corporation 0990643

Dear Mr. Dibble

Please find enclosed an Air General Permit Notification for the referenced facility and the required check for \$ 100.00.

If you have any questions concerning the application please direct them to me at 954.796.1980 or to my email <schaltee@bellsouth.net >

Sincerely



Eugene D. Schaltenbrand, P.E.
Vice President

From: Origin ID: TNTA (954) 796-1987
 Gene Schaltenbrand
 BROOKS & ASSOCIATES ENGINEERING AND
 5068 NW 85TH RD

CORAL SPRINGS, FL 33067



J10101002060224

Ship Date: 09FEB10
 Act/Wgt: 0.5 LB
 CAD: 3620453/NET3010

Delivery Address Bar Code



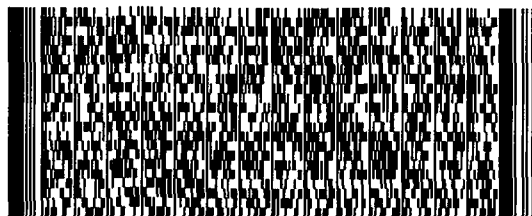
Ref #
 Invoice #
 PO #
 Dept #

SHIP TO: (850) 488-1344 BILL SENDER
Dickson Dibble
FDEP Air Resources Management
2600 BLAIRSTONE RD
MS 5500
TALLAHASSEE, FL 32399

WED - 10 FEB A2

TRK# 7983 7701 4416
 0201

PRIORITY OVERNIGHT

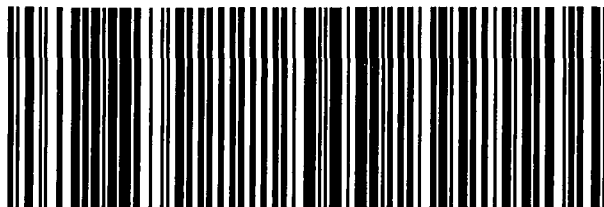


32399

FL-US

TLH

XH TLHA



60602/CT33/FEB

After printing this label:

1. Use the 'Print' button on this page to print your label to your laser or inkjet printer.
2. Fold the printed page along the horizontal line.
3. Place label in shipping pouch and affix it to your shipment so that the barcode portion of the label can be read and scanned.

Warning: Use only the printed original label for shipping. Using a photocopy of this label for shipping purposes is fraudulent and could result in additional billing charges, along with the cancellation of your FedEx account number.

Use of this system constitutes your agreement to the service conditions in the current FedEx Service Guide, available on fedex.com. FedEx will not be responsible for any claim in excess of \$100 per package, whether the result of loss, damage, delay, non-delivery, misdelivery, or misinformation, unless you declare a higher value, pay an additional charge, document your actual loss and file a timely claim. Limitations found in the current FedEx Service Guide apply. Your right to recover from FedEx for any loss, including intrinsic value of the package, loss of sales, income interest, profit, attorney's fees, costs, and other forms of damage whether direct, incidental, consequential, or special is limited to the greater of \$100 or the authorized declared value. Recovery cannot exceed actual documented loss. Maximum for items of extraordinary value is \$500, e.g. jewelry, precious metals, negotiable instruments and other items listed in our Service Guide. Written claims must be filed within strict time limits, see current FedEx Service Guide.



P.O. BOX 880023 • BOCA RATON, FLORIDA 33488-0023

