

**CONCRETE BATCHING PLANT
AIR GENERAL PERMIT REGISTRATION FORM**

Bureau of Air Pollution Control
 Mobile Region

MAR 30 2009

RECEIVED

Part II. Notification to Permitting Office

(Detach and submit to appropriate permitting office; keep copy onsite)

Instructions: To give notice to the Department of an eligible facility's intent to use this air general permit, the owner or operator of the facility must detach and complete this part of the Air General Permit Registration Form and submit it to the appropriate Department of Environmental Protection or local air pollution control program office which has permitting authority. Please type or print clearly all information, and enclose the appropriate air general permit registration processing fee pursuant to Rule 62-4.050, F.A.C. (\$100 as of the effective date of this form)

0990635-002

Registration Type

Check one:

INITIAL REGISTRATION - Notification of intent to:

- Construct and operate a proposed new facility.
 Operate an existing facility not currently using an air general permit (e.g., a facility proposing to go from an air operation permit to an air general permit).

RE-REGISTRATION (for facilities currently using an air general permit) - Notification of intent to:

- Continue operating the facility after expiration of the current term of air general permit use.
 Continue operating the facility after a change of ownership.
 Make an equipment change requiring re-registration pursuant to Rule 62-210.310(2)(e), F.A.C., or any other change not considered an administrative correction under Rule 62-210.310(2)(d), F.A.C.

Surrender of Existing Air Operation Permit(s) - For Initial Registrations Only

If the facility currently holds one or more air operation permits, such permit(s) must be surrendered by the owner or operator upon the effective date of this air general permit. In such case, check the first box, and indicate the operation permits being surrendered. If no air operation permits are held by the facility, check the second box.

- All existing air operation permits for this facility are hereby surrendered upon the effective date of this air general permit; specifically permit number(s): _____
 No air operation permits currently exist for this facility.

General Facility Information

Facility Owner/Company Name (Name of corporation, agency, or individual owner who or which owns, leases, operates, controls, or supervises the facility.)

RMB Concrete & Precast Inc

Site Name (Name, if any, of the facility site; e.g., Plant A, Metropolis Plant, etc. If more than one facility is owned, a registration form must be completed for each.)

Riviera Beach Plant

Facility Location (Provide the physical location of the facility, not necessarily the mailing address.)

Street Address: 460 Avenue S

City: Riviera Beach

County: Palm Beach

Zip Code: 33404

Facility Start-Up Date (Estimated start-up date of proposed new facility.) (N/A for existing facility)

Type of Facility

Check one:

Stationary Facility

Relocatable Facility

Type(s) of Reasonable Precautions Used to Prevent Unconfined Emissions

Check all precautions to be used for the management of roads, parking areas, stock piles and yards:

Pave Roads

Pave Parking Areas

Pave Yards

Maintain Roads/Parking/Yards

Use Water Application

Use Dust Suppressant

Remove Particulate Matter

Reduce Stock Pile Height

Install Wind Breaks

Check all precautions to be used for the management of drop points to trucks:

Spray Bar

Chute

Enclosure

Partial enclosure

Description of Reasonable Precautions

Below, or as an attachment to this form, provide details of all types of reasonable precautions to be used to prevent unconfined emissions at the facility. Yard and parking areas are paved and swept, sand and aggregates are stored in revetments. silos are equipped with fabric type dust collewctors. Unpaved areas are planted.

Description of Facility

Below, or as an attachment to this form, provide a description of the concrete batching plant operations at the facility in sufficient detail to demonstrate the facility's eligibility for use of this air general permit and to provide a basis for tracking any future equipment or process changes at the facility. Describe all air pollutant-emitting processes and equipment at the facility, and identify any air pollution control measures or equipment used. Typical batch plant with two silos (one siamesed to hold both cement and flyash) and one concrete batcher. Equipment consists of:

1. Stephens Concrete Plant Model: Stallion 12 yd 150/4 Serial No: 7061-04
2. Stephens Silo #1 528 Bbl silo
3. Stephens Split Silo 1069 Bbl (with 2 1325 CFM 265 sq ft Bin Vent dust collector) Serial No: 8625-08; CPMB #11552
4. Stephens Ozone Super Flow 6000 CFM cartridge dust collector with 15 HP Fan serves both silo #1 and concrete batcher.

**UPDATED COPY*

Description of Facility

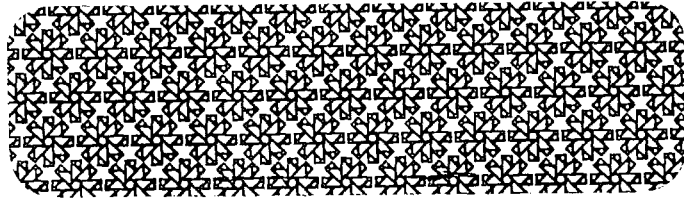
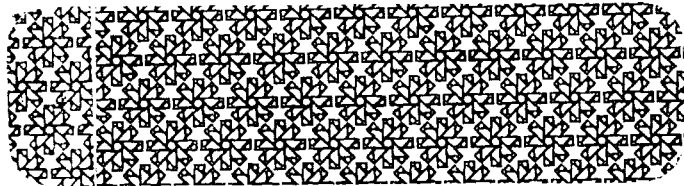
Below, or as an attachment to this form, provide a description of the concrete batching plant operations at the facility in sufficient detail to demonstrate the facility's eligibility for use of this air general permit and to provide a basis for tracking any future equipment or process changes at the facility. Describe all air pollutant-emitting processes and equipment at the facility, and identify any air pollution control measures or equipment used.

Typical batch plant with two silos (one siamesed to hold both cement and flyash) and one concrete batcher.
Equipment consists of:

1. 528 Bbl silo
2. 1069 Bbl silo (siamesed) with two 1325 CFM, 265 sq ft bin vent dust collectors
3. One 6000 CFM, dust collector w/ 15Hp fan Serves both silo #1 and concrete batcher

** SEE ATTACHED UPDATED
COPY OF THIS PAGE.*

WEST PALM BEACH
FL 334 6 L
24 MAR 2009 PM



32315+3070



Dibble, Dickson

From: Dibble, Dickson
Sent: Wednesday, April 01, 2009 9:05 AM
To: 'mail@rmbconcrete.com'
Cc: Bowman, Sandy
Subject: AIRS ID# 0990635-002-AG, RMB Concrete & Precast Inc, d.b.a. Riviera Beach Plant, 460 Ave S, Riviera Beach, FL 33404

| | | |
|------------------|------------------------|-----------------------------|
| Tracking: | Recipient | Delivery |
| | 'mail@rmbconcrete.com' | |
| | Bowman, Sandy | Delivered: 4/1/2009 9:05 AM |

Dear Mr. Richard Barnes,

It was a pleasure to speak with you this morning regarding the recent registration form (date stamped 03/26/09) which you submitted for the purpose of renewing your Air General permit and adding more equipment to your facility. For your referral you will find attached a .pdf file which contains a scanned copy of the form which you submitted. Just "click" on it, download and print. Please add the following information to page 10, re-scan and send in e-mail, or fax to the number shown below in my signature and I will attach the updates as an addendum to your registration form.

Please refer to the page identified as page 10 of the form:

For items #1 & 3, the 528 Bbl silo & concrete batcher respectively, kindly provide the following additional identifiers:

- a) silo Mfr name & silo model #
- b) dust collector/baghouse Mfr name & Model #, ft² filter area (central dust collector for silo & batcher) – (I am assuming that silo #1 is the 528 Bbl silo?)

For item #2, the 1069 Bbl split silo (two compartment)

- a) silo Mfr name & silo model #
- b) dust collector/baghouse Mfr name & Model #, ft² filter area of each bin vent dust collector (I wasn't sure if 265 ft² was a total of both or the amount of each)

Thank you for your attention to this matter. If you have any questions, comments and/or concerns, please e-mail or call.

Thank you and have a great day!

Dickson E. Dibble

Dickson E. Dibble, ES III

FL Dept of Environmental Protection
 Div. of Air Resource Management
 Bureau of Air Monitoring & Mobile Sources
 Air General Permit Program
 Tel. (850) 921-9586
 FAX (850) 922-6979
 ICG-#345

Dickson.Dibble@dep.state.fl.us

4/1/2009



Please note: Florida has a very broad public records law. Most written communications to or from state officials regarding state business are public records available to the public and media upon request. Your e-mail communications may therefore be subject to public disclosure

Dibble, Dickson

From: Margie Granati [mgranati@rmbconcrete.com]

Sent: Wednesday, April 01, 2009 4:11 PM

To: Dibble, Dickson

Subject: RE: AIRS ID# 0990635-002-AG, RMB Concrete & Precast Inc, d.b.a. Riviera Beach Plant, 460 Ave S, Riviera Beach, FL 33404

Thank you,

Richard Barnes
Sec/Treas
RMB Concrete & Precast, Inc
mail@rmbconcrete.com
Phone: 561/840-6499
Fax: 561/840-6497

4/1/2009

Description of Facility

Below, or as an attachment to this form, provide a description of the concrete batching plant operations at the facility in sufficient detail to demonstrate the facility's eligibility for use of this air general permit and to provide a basis for tracking any future equipment or process changes at the facility. Describe all air pollutant-emitting processes and equipment at the facility, and identify any air pollution control measures or equipment used. Typical batch plant with two silos (one siamesed to hold both cement and flyash) and one concrete batcher. Equipment consists of:

1. Stephens Concrete Plant Model: Stallion 12 yd 150/4 Serial No: 7061-04
2. Stephens Silo #1 528 Bbl silo
3. Stephens Split Silo 1069 Bbl (with 2 1325 CFM 265 sq ft Bin Vent dust collector) Serial No: 8625-08; CPMB #11552
4. Stephens Ozone Super Flow 6000 CFM cartridge dust collector with 15 HP Fan serves both silo #1 and concrete batcher.