

RECEIVED

JUN 02 2010

CONCRETE BATCHING PLANT  
AIR GENERAL PERMIT REGISTRATION FORM

BUREAU OF AIR QUALITY  
& Mobile Sources

Part II. Notification to Permitting Office  
(Detach and submit to appropriate permitting office; keep copy onsite)

**Instructions:** To give notice to the Department of an eligible facility's intent to use this air general permit, the owner or operator of the facility must detach and complete this part of the Air General Permit Registration Form and submit it to the appropriate Department of Environmental Protection or local air pollution control program office which has permitting authority. Please type or print clearly all information, and enclose the appropriate air general permit registration processing fee pursuant to Rule 62-4.050, F.A.C. (\$100 as of the effective date of this form).

0951217-004

Registration Type

Check one:

**INITIAL REGISTRATION** - Notification of intent to:

- Construct and operate a proposed new facility.
- Operate an existing facility not currently using an air general permit (e.g., a facility proposing to go from an air operation permit to an air general permit).

**RE-REGISTRATION** (for facilities currently using an air general permit) - Notification of intent to:

- Continue operating the facility after expiration of the current term of air general permit use.
- Continue operating the facility after a change of ownership.
- Make an equipment change requiring re-registration pursuant to Rule 62-210.310(2)(e), F.A.C., or any other change not considered an administrative correction under Rule 62-210.310(2)(d), F.A.C.

Surrender of Existing Air Operation Permit(s) - For Initial Registrations Only

If the facility currently holds one or more air operation permits, such permit(s) must be surrendered by the owner or operator upon the effective date of this air general permit. In such case, check the first box, and indicate the operation permits being surrendered. If no air operation permits are held by the facility, check the second box.

- All existing air operation permits for this facility are hereby surrendered upon the effective date of this air general permit; specifically permit number(s):
- No air operation permits currently exist for this facility.

General Facility Information

Facility Owner/Company Name (Name of corporation, agency, or individual owner who or which owns, leases, operates, controls, or supervises the facility.)

Accord Industries, LLC -(AIRS ID # 0951217-003-AG)

Site Name (Name, if any, of the facility site; e.g., Plant A, Metropolis Plant, etc. If more than one facility is owned, a registration form must be completed for each.)

N/A

Facility Location (Provide the physical location of the facility, not necessarily the mailing address.)

Street Address: 4001 Forsyth Road

City: Winter Park

County: Orange

Zip Code: 32792

Facility Start-Up Date (Estimated start-up date of proposed new facility.) (N/A for existing facility):

July 1, 2010

FLORIDA DEPARTMENT OF ENVIRONMENTAL PROTECTION  
2010 JUN -1 PM 1:32  
FINANCE & ACCOUNTING  
REVENUE

**Owner/Authorized Representative**

Name and Position Title (Person who, by signing this form below, certifies that the facility is eligible to use this air general permit.)

Print Name and Title: James Goulden, CEO/President

Owner/Authorized Representative Mailing Address

Organization/Firm: Accord Industries, LLC

Street Address: 4001 Forsyth Road

City: Winter Park

County: Orange

Zip Code: 32792

Owner/Authorized Representative Telephone Numbers

Telephone: 407-671-5200

Fax:

Cell phone (optional):

**Facility Contact (If different from Owner/Authorized Representative)**

Name and Position Title (Plant manager or person to be contacted regarding day-to-day operations at the facility.)

Print Name and Title: Justin Womrath - Safety Manager

Facility Contact Mailing Address

Organization/Firm: Accord Industries, LLC

Street Address: 4001 Forsyth Road

City: Winter Park

County: Orange

Zip Code: 32792

Facility Contact Telephone Numbers

Telephone: 407-671-5200 ext. 108

Fax:

Cell phone (optional): 407-436-8600

**Owner/Authorized Representative Statement**

This statement must be signed and dated by the person named above as owner or authorized representative

*I, the undersigned, am the owner or authorized representative of the owner or operator of the facility addressed in this Air General Permit Registration Form. I hereby certify, based on information and belief formed after reasonable inquiry, that the facility addressed in this registration form is eligible for use of this air general permit and that the statements made in this registration form are true, accurate and complete. Further, I agree to operate and maintain the facility described in this registration form so as to comply with all applicable standards for control of air pollutant emissions found in the statutes of the State of Florida and rules of the Department of Environmental Protection and revisions thereof.*

*I will promptly notify the Department of any changes to the information contained in this registration form.*

  
Signature

5-27-10  
Date

DEPARTMENT OF ENVIRONMENTAL PROTECTION  
2010 JUN -1 PM 1:32  
FINANCE & ACCOUNTING REVENUE

**Type of Facility**

Check one:

Stationary Facility

Relocatable Facility

**Type(s) of Reasonable Precautions Used to Prevent Unconfined Emissions**

Check all precautions to be used for the management of roads, parking areas, stock piles and yards:

**Pave Roads**

**Pave Parking Areas**

**Pave Yards**

**Maintain Roads/Parking/Yards**

**Use Water Application**

**Use Dust Suppressant**

**Remove Particulate Matter**

**Reduce Stock Pile Height**

**Install Wind Breaks**

Check all precautions to be used for the management of drop points to trucks:

**Spray Bar**

**Chute**

**Enclosure**

**Partial enclosure**

**Description of Reasonable Precautions**

Below, or as an attachment to this form, provide details of all types of reasonable precautions to be used to prevent unconfined emissions at the facility.

Note: Accord Industries, LLC is not a ready mix facility.

Accord Industries, LLC is a prestressed concrete manufacturing facility specializing in reinforced concrete poles (see attachment #1). Concrete is batched in a mixer and discharged directly into a concrete delivery vehicle (see attachment #2).

Along with Dust collectors (on the silo and mixer) and delivering wet concrete from the mixer into a concrete delivery vehicle, best management practices are in place to control unconfined emissions around the batch plant, drive ways, and aggregate stock piles. Best management practices include:

1. Verifying silo capacity,
2. Reducing p.s.i's during cement tanker truck unloading,
3. Storing/watering down aggregate in bin structures,
4. Dust control of driving areas around the batch plant,
5. Completing a monthly to quarterly inspection of batch plant dust control components

2010 JUN -1 PM 1:32  
DEPARTMENT OF REVENUE

**Description of Facility**

Below, or as an attachment to this form, provide a description of the concrete batching plant operations at the facility in sufficient detail to demonstrate the facility's eligibility for use of this air general permit and to provide a basis for tracking any future equipment or process changes at the facility. Describe all air pollutant-emitting processes and equipment at the facility, and identify any air pollution control measures or equipment used.

Accord Industries, LLC will be removing all aspects of our existing Batch Plant (aggregate hoppers, weight car, skip hoist, mixer, scales, augers, silo, and supporting structure). These are completely replaced with a new Batch Plant consisting of feed aggregate batchers, conveyor belt, 720 Bbls custom built split silo, double enclosed auger system, mixer, and supporting structure in the same foot print as the old Batch Plant.

Material from a split silo will be delivered to the mixer from an enclosed auger system and aggregate will be delivered to the mixer from a covered conveyer system. Once the material is in the mixer, it is mixed with water and admixtures before (wet concrete) is delivered directly into a concrete delivery vehicle, then poured into molds (see attachment #3).

**SILO INFORMATION**

Manufacturer: R&S Industries

Model #: N/A - Custom silo 60/40 split

The silo is a split silo (60% cement and 40% flyash) with a capacity of 720 Bbls (432 Bbls of cement and 288 Bbls of flyash) with a individual dust collector per each side. The flyash will be stored in the South side, and cement, stored in the North side.

**SILO DUST COLLECTOR INFORMATION**

Manufacturer: Tri-mer Corporation Model #: PJC-305 (Same model per each compartment):

- \* Silo Top Pulse Jet Dust Collector, Rated at 1,700 CFM with 99.9% Cleaning Efficiency.
- \* Each Compartment has (8) 8" x 39" Top Entry Filter Cartridges with 305 Sq. Ft. filtration area.
- \* (2) 3/4" ASCO Solenoid Valves, an Inline Filter and Regulator.
- \* Hinged Top Entry for Easy Entry Into The System.
- \* Solid State Time Controlled Air Pulse Cleaning System.
- \* Adjustable Control Panel for Duration and Cycle Times.
- \* Pre-Wired and Tested at the Factory Prior to Shipment.

**MIXER DUST COLLECTOR INFORMATION**

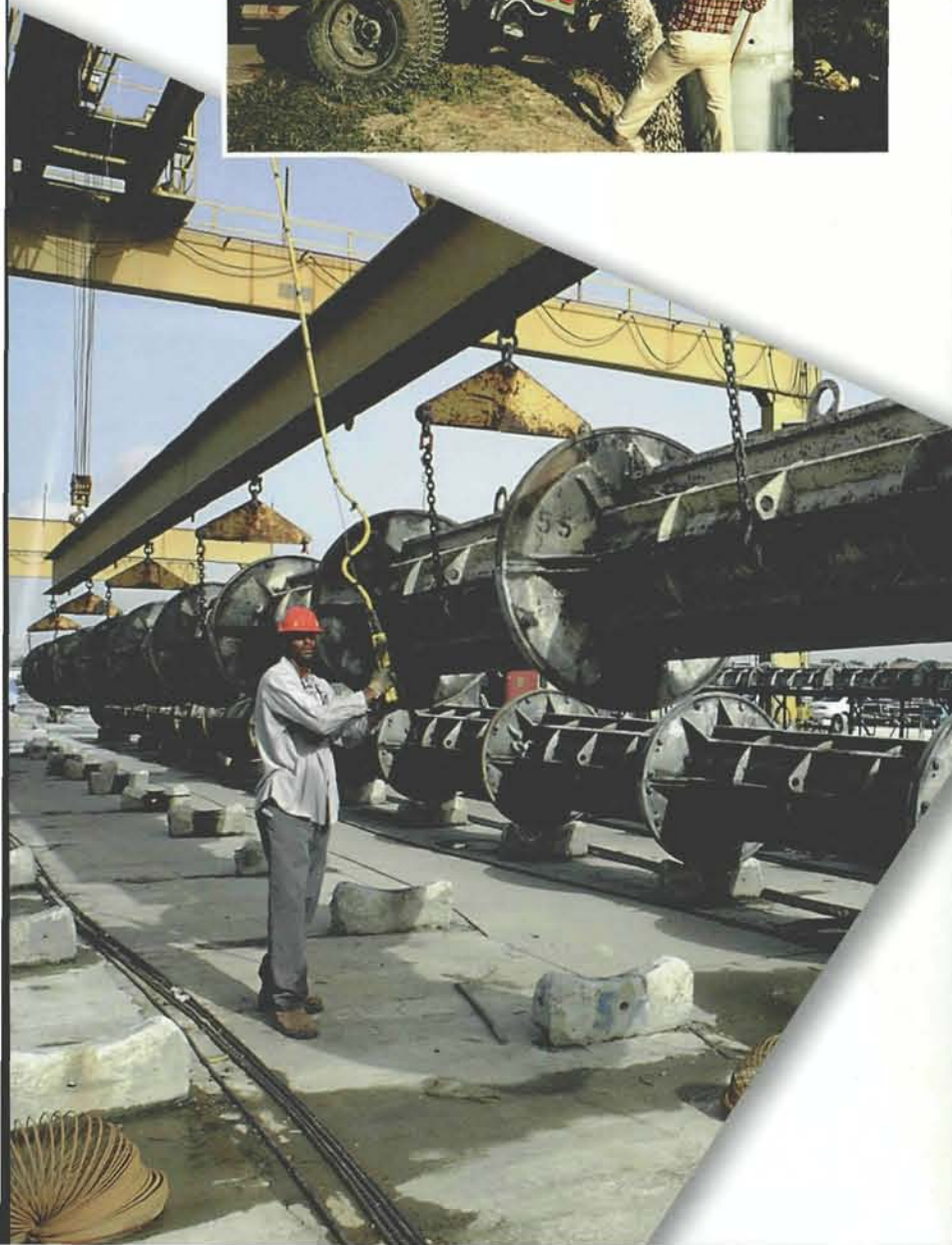
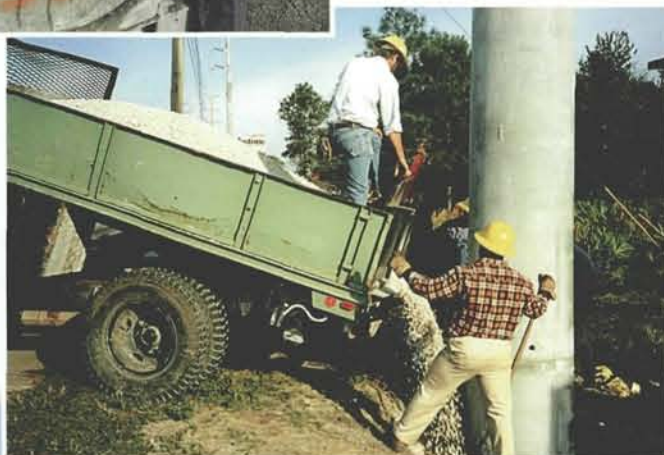
Manufacturer: Tri-mer Corporation

Model #: PJC-70

- \* Pulse Jet type collector, rated at 420 CFM with a 99.99% cleaning efficiency.
- \* One compartment with (4) 5-5/8" x 20" top entry filter cartridges with 72 Square Feet of cloth filtration area.
- \* Solid State timer controlled pulse jet cleaning system.
- \* Adjustable control panel for duration and cycle times.
- \* Ducted and utilized for Dust control from the mixer.

2010 JUN -1 PM 1:10  
FINANCE & ACC  
REVENUE

NOA DEPARTMENT 1



# WHY ACCORD?

Accord Industries is the largest company of its kind in the U.S. and has been manufacturing quality prestressed concrete poles for over 30 years. The quality of our products is assured through our engineering and design staff coupled with stringent quality control procedures during production. Because we control the product from design through production, we are able to respond to each customer's requirements. We offer the proven design of our static cast poles as well as the more versatile and innovative centrifugally spun concrete structures. At Accord, we follow a higher standard in design, production and customer service. Call us today or visit us online at [www.accordindustries.com](http://www.accordindustries.com).



4001 Forsyth Road  
Winter Park, Florida 32792  
800.477.7675 • 407.671.5200  
Fax 407.679.2297  
[www.accordindustries.com](http://www.accordindustries.com)

# FOLLOW A HIGHER STANDARD

THE INDUSTRY

LEADER

IN QUALITY

CONCRETE POLES

FOR OVER

30 YEARS



Attachment #1



# WHY CONCRETE?

The low maintenance, competitive price and aesthetic appearance of precast concrete poles makes them superior to steel or wood for use in utility, sports lighting, communication, and area lighting applications. Ease and speed of installation means faster project completion and lower installed cost; direct burial with no foundation required.

Our concrete poles are designed and field tested to withstand extreme weather conditions such as hurricanes, tornados, fire and salt air.

## BENEFITS OF EMBEDDED PRESTRESSED POLES

Prestressed concrete poles are direct buried, eliminating the cost and time delays of setting anchor base footings. They are an excellent solution for heavy or unbalanced loads or questionable soil bearing strengths.

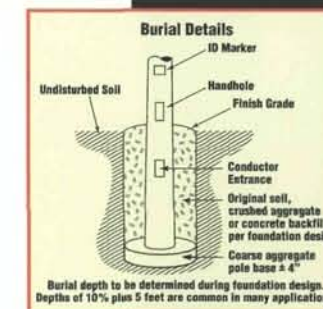
### WITH PRESTRESSED CONCRETE DIRECT BURIAL POLES:

**SAVE TIME...**sets in hours, not days

**SAVE MONEY...**eliminates the material, labor and delay costs of anchor based foundations

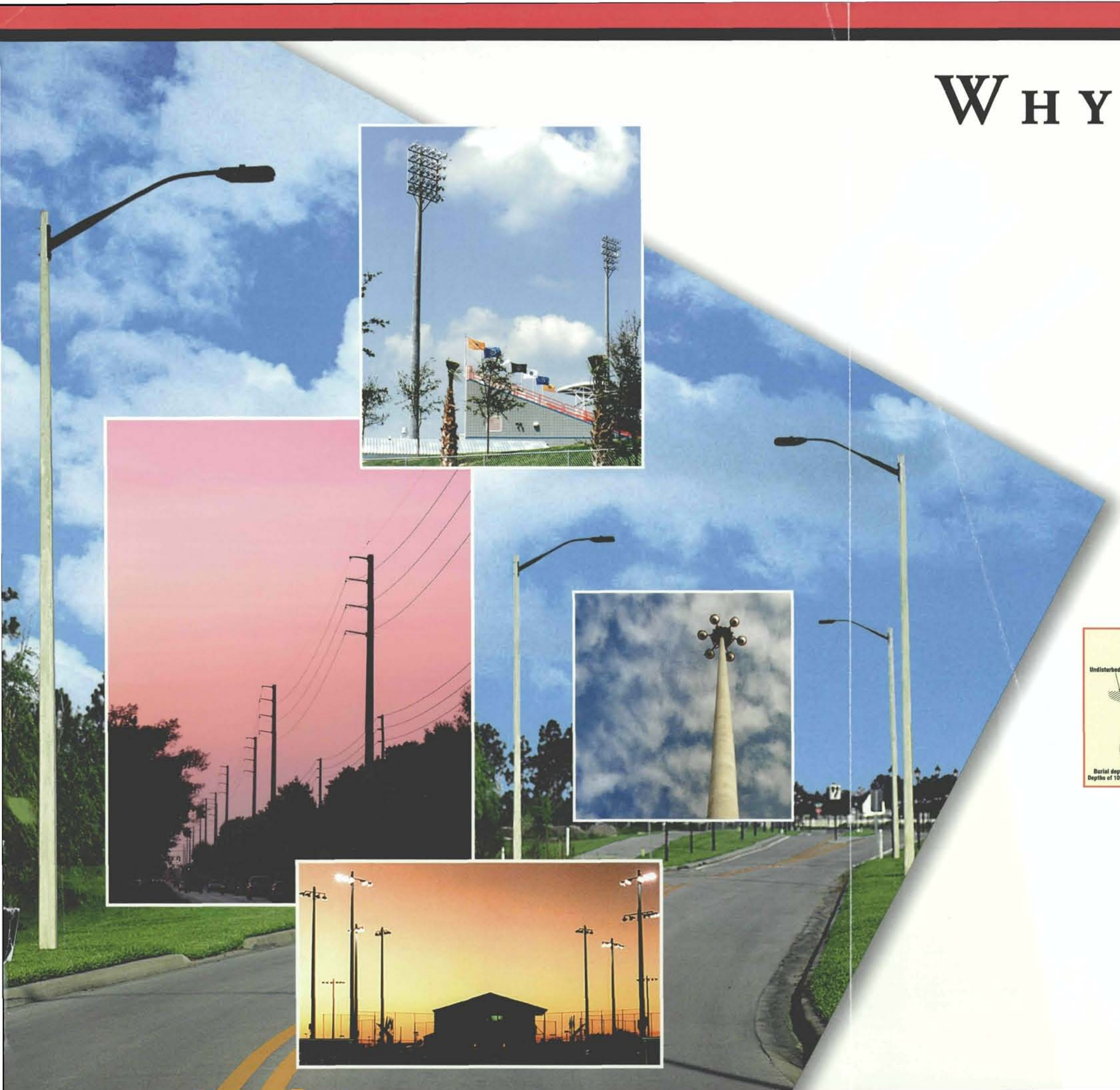
**CREATE A MORE PLEASING ASPECT...**

simply pave or install sod around the pole to provide a neat, clean uncluttered appearance



### QUALITY PRESTRESSED CONCRETE PRODUCTS FOR:

- Transmission
- Substation
- Lighting/Sports Areas
- Distribution
- Signalization
- Cellular/Hi Mast
- Microwave/Antenna
- Security



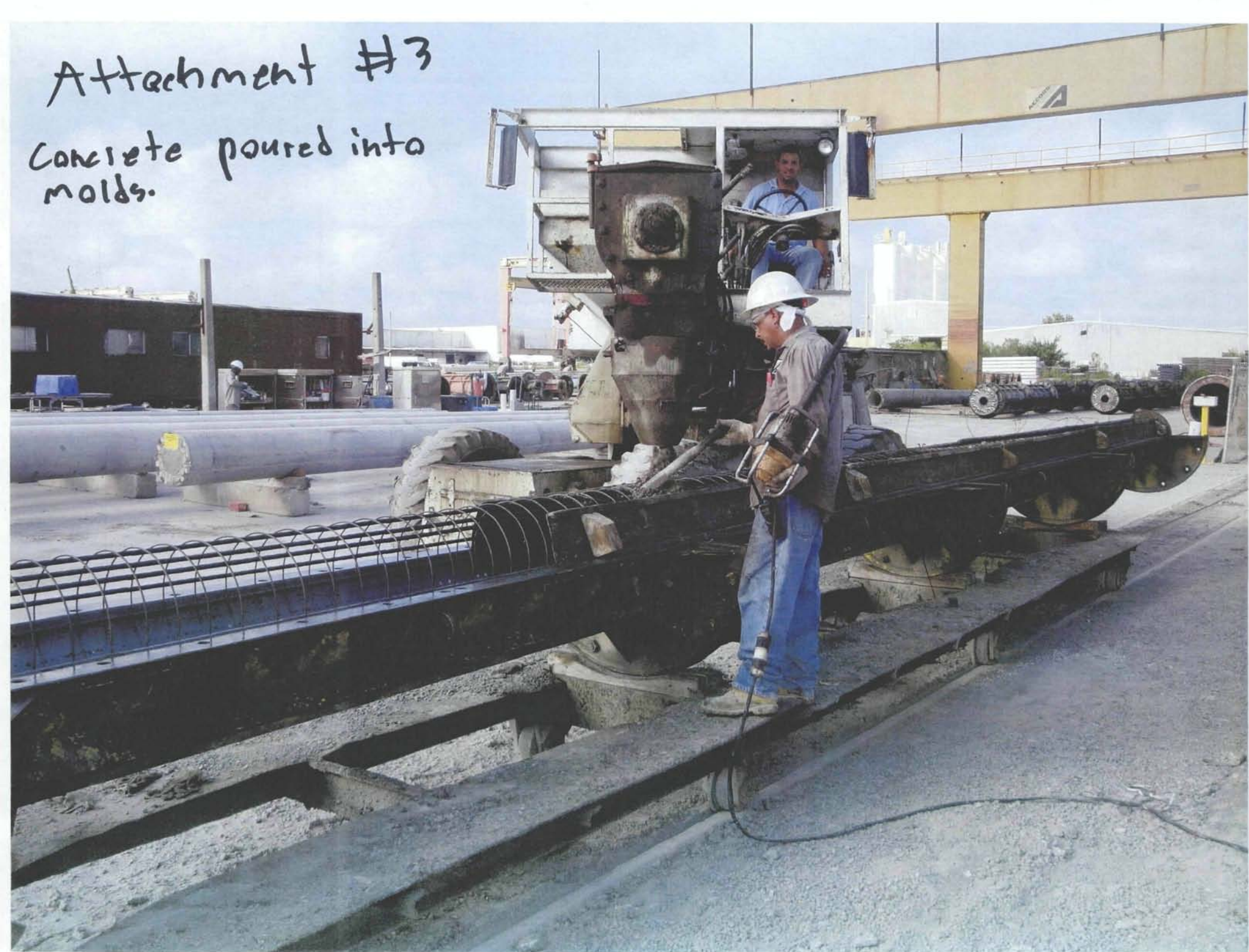


Concrete delivery vehicle

Attachment #2

Attachment #3

Concrete poured into  
molds.





## Why Choose **ACCORD**?

Accord Industries has been manufacturing quality pre-stressed concrete poles since 1962. The quality of our products is assured through our engineering and design staff coupled with stringent quality control procedures during production. Because we control the product from design through production, we are able to respond to each customer's requirements.

At Accord, you get the best value with our static cast poles as well as the more versatile and innovative centrifugally spun concrete structures ranging in heights from 10 ft. to 140 ft.

### Quality Pre-Stressed Concrete Products for:

- Transmission
- Substation
- Lighting
  - Area
  - Highmast/FDOT Approved
  - Sports
- Distribution
- Signalization
- Cellular
- Microwave
- Security



Quality Pre-Stressed  
Concrete Products

1-800-477-7675 • 407-671-7676

Fax 407-679-2297

[www.accordindustries.com](http://www.accordindustries.com)

4001 Forsyth Road • Winter Park, Florida 32792

Attachment #1  
**ACCORD  
INDUSTRIES**

Quality Pre-Stressed  
Concrete Poles



Why Specify Concrete?

# Why Specify Concrete?

## Maintenance

The low maintenance, competitive price and aesthetic appearance of precast concrete poles makes them superior to steel or wood for use in utility, sports lighting, communication, and area lighting applications.

## Installation

Ease and speed of installation means faster project completion and lower installed costs.



## Environment

The use of concrete poles preserves our forests, requires no chemical treatment, and utilizes environmentally safe materials in production and placement.



## Other benefits include:

- Corrosion Resistance
- Long Service Life - in excess of 50 years
- Cost effective - both installed and service life costs
- Minimal vibration and deflection offer extended lamp and ballast life for lighting structures and greater on-line percentage for microwave and communication structures
- Versatility - concrete poles are offered in a variety of lengths, shapes and strengths
- Through the use of standardized designs and repetitive production we can meet your delivery and pricing requirements, or we can put our in-house engineering staff to work for you to design a product to meet your specific application.



**Quality Pre-Stressed  
Concrete Products**