

AUG 05 2011

AUG 08 2011

BUREAU OF AIR REGULATION
NONMETALLIC MINERAL PROCESSING PLANT (CRUSHER)
AIR GENERAL PERMIT EXAMPLE REGISTRATION WORKSHEET

1307 HRS -
8/25/11
PER TELECON
W/JANZE
RUSHBRIDGE

Facility Identification Number - If known (seven digit number)

~~775499-001~~

SHOULD BE # 0850152 - IS STATIONARY PLANT NOT THE
RELOCATABLE ONE.

0850152-002

Registration Type

Check one:

INITIAL REGISTRATION - Notification of intent to:

- Construct and operate a proposed new facility.
- Operate an existing permitted facility not currently using an air general permit (e.g., a facility proposing to go from an air operation permit to an air general permit). If the facility currently holds one or more air operation permits, such permit(s) must be surrendered by the owner or operator upon the effective date of this air general permit. (See "Surrender of Existing Air Operation Permit(s)" below.)
- Operates an existing facility not currently permitted or using an air general permit.

RE-REGISTRATION (for facilities currently using an air general permit) - Notification of intent to:

- Continue operating the facility after expiration of the current term of air general permit use.
- Continue operating the facility after a change of ownership.
- Make an equipment change requiring re-registration pursuant to Rule 62-210.310(2)(e), F.A.C.
- Any other change not considered an administrative correction under Rule 62-210.310(2)(d), F.A.C.

Surrender of Existing Air Operation Permit(s) - For Initial Registrations Only, if Applicable

All existing air operation permits for this facility are hereby surrendered upon the effective date of this air general permit; specifically permit number(s):

General Facility Information

Facility Owner/Company Name (Name of corporation, agency, or individual owner who or which owns, leases, operates, controls, or supervises the facility.)

Lake Point Restoration, LLC

Site Name (Name, if any, of the facility site; e.g., Plant A, Metropolis Plant, etc. If more than one facility is owned, a complete registration must be submitted for each.)

Lake Point Phase I

Facility Location (Physical location of the facility, not necessarily the mailing address.)

Street Address: 1 Mile East of the Intersection of US 441 and SR 76 (Kanner Hgwy) Sect. 24, TWP 405. Range 38E

City: Port Mayaca

County: Martin

Zip Code: 33438

Facility Start-Up Date (Estimated start-up date of proposed new facility.)(N/A for existing facility.)

N/A

Facility Contact

Name and Position Title (Plant manager or person to be contacted regarding day-to-day operations at the facility.)

Print Name and Title: Jamie Rusbridge G.M. Danny Pridgen Director of Operations

Facility Contact Telephone Numbers

Telephone: 561-924-9100

Fax: 561-924-9101

Cell phone: _____

E-mail: sales@lakepointrestoration.com

Facility Contact Mailing Address

Organization/Firm: Lake Point Restoration, LLC

Mailing Address: PO Box 69

City: Indiantown

County: Martin

Zip Code: 34956

Other Contact/Representative (to serve as additional Department contact)**Name and Position Title**

Print Name and Title: Harry Rusbridge, M.M.

Other Contact/Representative Telephone Numbers

Telephone: 561-791-1953

Fax: 561-795-9282

Cell phone: _____

E-mail: _____

Other Contact/Representative Mailing Address

Organization/Firm: H&J Contracting

Mailing Address: 3160 Fairlane Farms Rd

City: Wellington

County: Palm Beach

Zip Code: 33414

Description of Facility

Below, or as an attachment to this form, provide a description of the nonmetallic mineral processing plant operations at the facility in sufficient detail to demonstrate the facility's eligibility for use of this air general permit and to provide a basis for tracking any future equipment or process changes at the facility. Describe material(s) processed, all air pollutant-emitting processes, and identify any air pollution control measures used. Mobile source equipment information is not needed (eg.: trucks, bulldozers, front-end loaders, etc.)

The notification is for the on site permanent equipment including a MGL Rock Crusher and wash plant. The wash plant grads and washes materials to different FDOT specifications. The modification to the existing wash plant is to produce more sized products during the initial process.

Helpful Definitions:

“Capacity” – Per 40 CFR 60.671, the cumulative rated capacity of all initial crushers that are part of the plant.

“Department” or “DEP” - The State of Florida Department of Environmental Protection.

“Emissions Unit” - Any part or activity of a facility that emits or has the potential to emit any air pollutant.

“Facility” - All of the emissions units which are located on one or more contiguous or adjacent properties, and which are under the control of the same person (or persons under common control).

“Owner” or “Operator” - Any person or entity who or which owns, leases, operates, controls or supervises an emissions unit or facility.

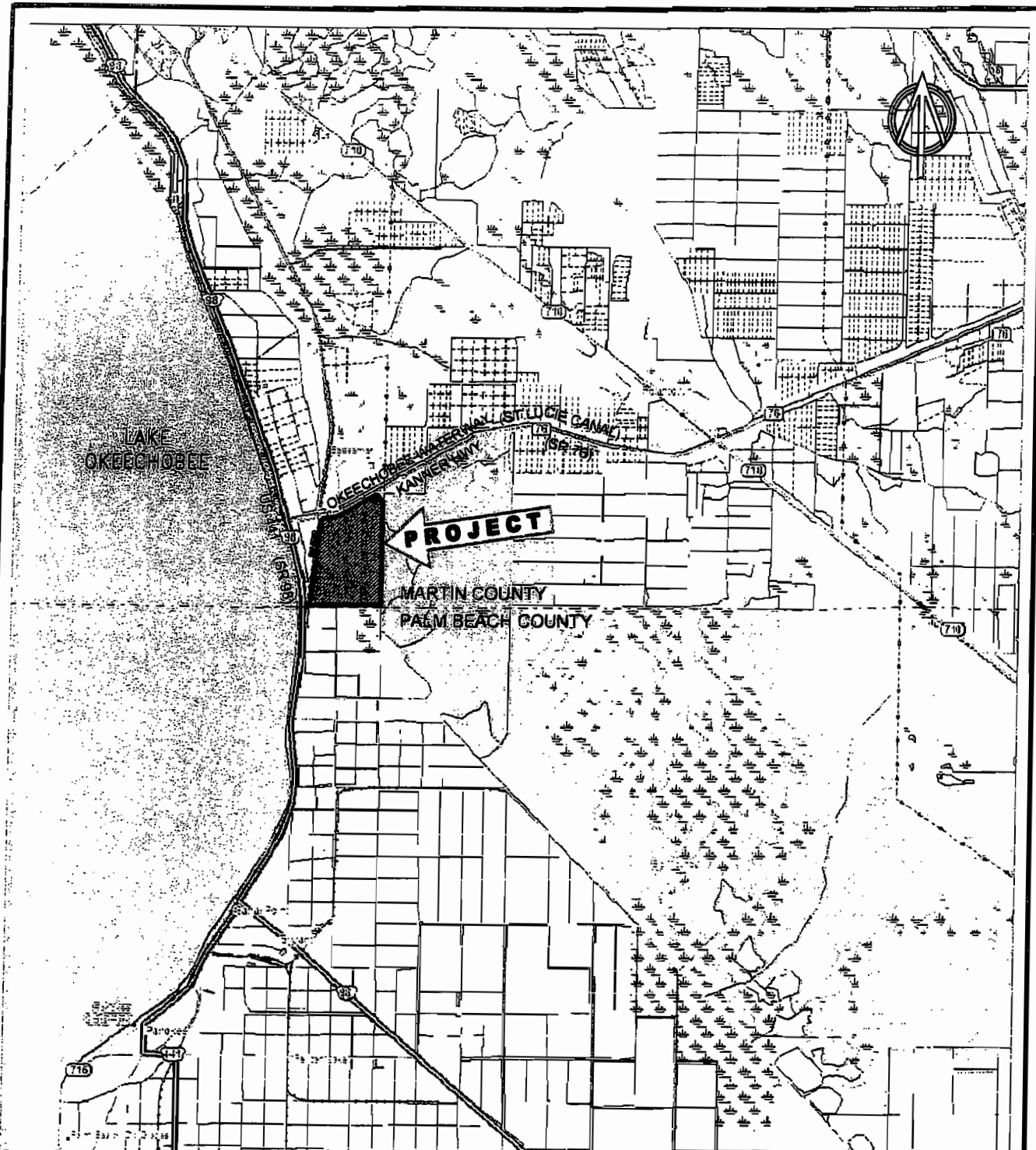
“Nonmetallic Mineral Processing Plant” – Per 40 CFR 60.671, any combination of equipment that is used to crush or grind any nonmetallic mineral wherever located, including lime plants, power plants, steel mills, asphalt concrete plants, portland cement plants or any other facility processing nonmetallic minerals except as provided in 40 CFR §60.670 (b) and (c).

“Relocatable Facility” - A facility such as, but not limited to, an asphalt plant, portable power generator, or relocatable nonmetallic mineral processing plant, which is designed to be physically moved to, and operated on, different sites by being wholly or partially dismantled and re-erected in essentially the same configuration. It shall not be operable while in transit.

“Screening Operation” – Per 40 CFR 60.671, a device for separating material according to size by passing undersize material through one or more mesh surfaces (screens) in series and retaining oversize material on the mesh surfaces (screens). Grizzly feeders associated with truck dumping and static (non-moving) grizzlies used anywhere in the nonmetallic mineral processing plant are not considered to be screening operations.

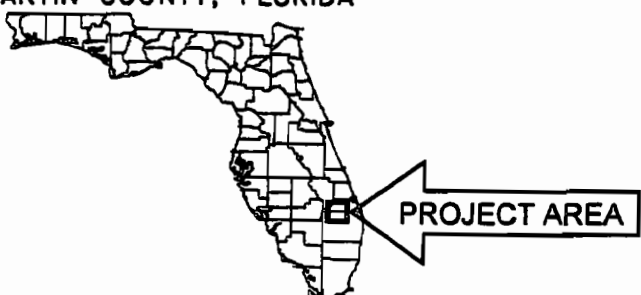
“Size” – Per 40 CFR 60.671, the rated capacity in tons per hour of a crusher, grinding mill, bucket elevator, bagging operation, or enclosed truck or railcar loading station; the total surface area of the top screen of a screening operation; the width of a conveyor belt; and the rated capacity in tons of a storage bin.


"Unconfined Emissions" - Emissions which escape and become airborne from unenclosed operations or which are emitted into the atmosphere without being conducted through a stack.

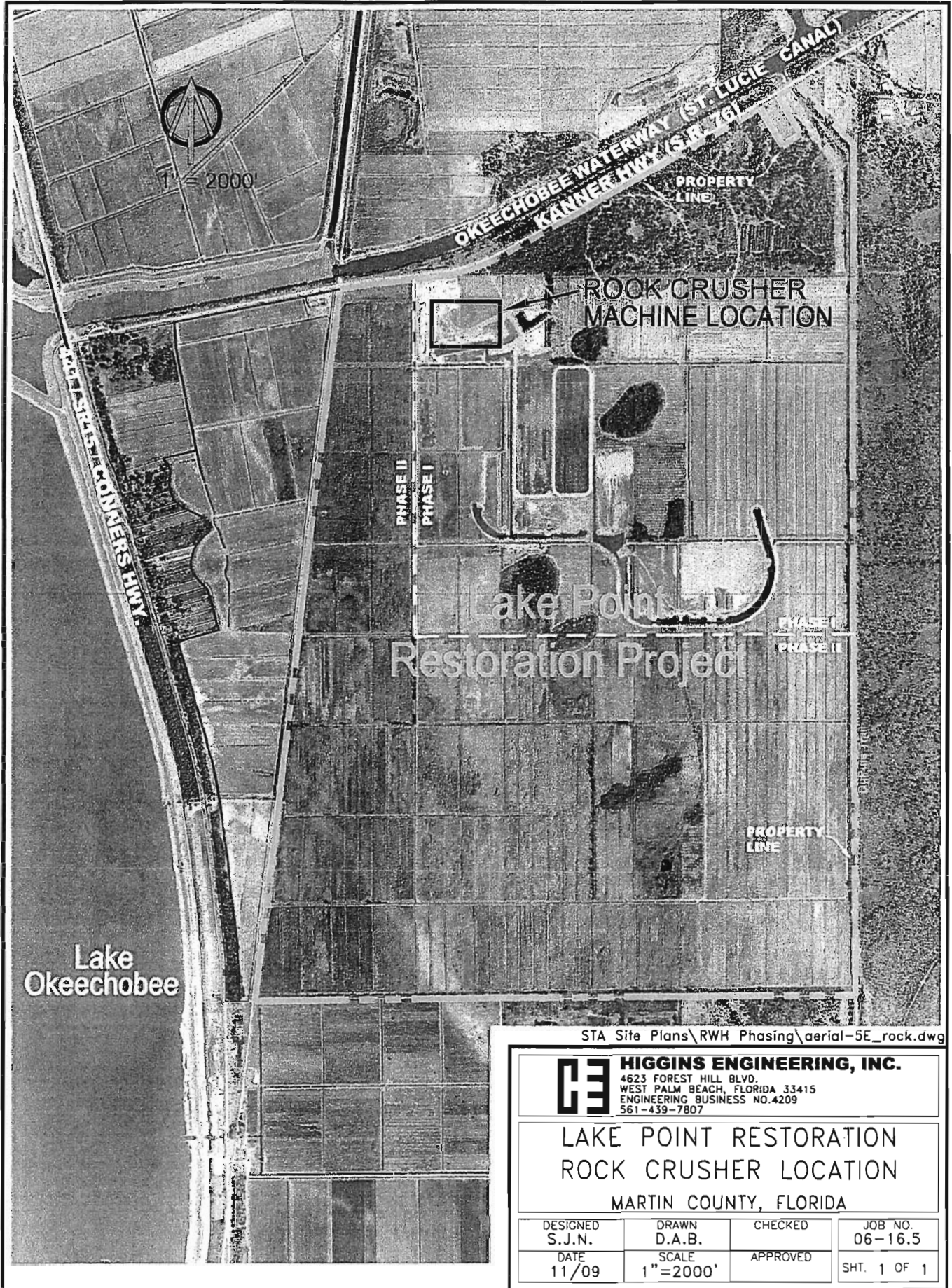


SECTIONS 13, 14, 23, 24, 25 & 26
 TWP 40S, RGE 37E
 MARTIN COUNTY, FLORIDA

0616-3_LakePoint\FlaLoc-1A.dwg



 HIGGINS ENGINEERING, INC. 4523 FOREST HILL BLVD. WEST PALM BEACH, FLORIDA 33415 ENGINEERING BUSINESS NO.4209 561-439-7807			
LAKE POINT RESTORATION VICINITY MAP MARTIN COUNTY, FLORIDA			
DESIGNED	DRAWN	CHECKED	JOB NO.
DATE	D.A.B.	APPROVED	06-16.5
9/09	N.T.S.		SHT. 1 OF 1



STA Site Plans\RWH Phasing\Aerial-5E_rock.dwg



HIGGINS ENGINEERING, INC.
 4623 FOREST HILL BLVD.
 WEST PALM BEACH, FLORIDA 33415
 ENGINEERING BUSINESS NO. 4209
 561-439-7807

**LAKE POINT RESTORATION
 ROCK CRUSHER LOCATION
 MARTIN COUNTY, FLORIDA**

DESIGNED S.J.N.	DRAWN D.A.B.	CHECKED	JOB NO. 06-16.5
DATE 11/09	SCALE 1"=2000'	APPROVED	SHT. 1 OF 1



HIGGINS ENGINEERING, INC.

August 2, 2011

Florida Department of Environmental Protection
Receipts
Post Office Box 3070
Tallahassee, FL 32315-3070

Re: FDEP Air General Permit Notification
Lake Point Restoration Project, Additional Permanent
Equipment
Martin County, Florida
Sections 23,24,25 & 26 Township 40 South, Range 37 East

Gentlemen:

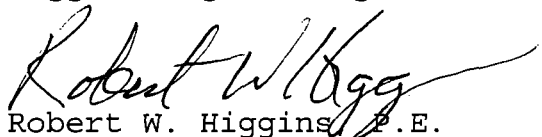
On behalf of Lake Point Restoration, LLC, we are providing notification of Intent to Operate under the Air General Permit for Nonmetallic Mineral Processing Plants (Crushers). As you are aware, the facility is located in western Martin County and has been operating under ARMS No. 775499-001. We are hereby applying for registration of the additional permanent on-site equipment. In support of this request, we are enclosing the following items:

1. Application processing check in the amount of \$100.00.
2. One (1) Original Executed Mine General Permit application form 62-210.920(2)(e).
3. Location and general site map.

The on-site facilities included in this application are listed on page five (5) of the application.

If you have any questions, please feel free to give us a call.

Very truly yours,
Higgins Engineering, Inc.


Robert W. Higgins, P.E.

06-16.6
Encl
cc: Jamie Rusbridge w/

4623 Forest Hill Blvd., Suite 113
(561) 439-7807

West Palm Beach, FL 33415
FAX (561) 439-0026

Water Resources - Environmental

US HIGGINS ENGINEERING, INC.

4623 Forest Hill Blvd., Suite 113
West Palm Beach, FL 33415



Florida Department of Environmental Protection
Receipts
PO Box 3070
Tallahassee FL 32315-3070



\$0.640
US POSTAGE
FIRST-CLASS
FROM 33415
AUG 02 2011
stamps
.com



062S0000958229