



Florida Department of Environmental Protection

Bob Martinez Center
2600 Blair Stone Road
Tallahassee, Florida 32399-2400

Charlie Crist
Governor

Jeff Kottkamp
Lt. Governor

Michael W. Sole
Secretary

May 7, 2008

Mr. Jeff G. Toale
Vice President
Toale Brothers Funeral Home
912 53rd Avenue West
Bradenton, Florida 34207

Dear Mr. Toale:

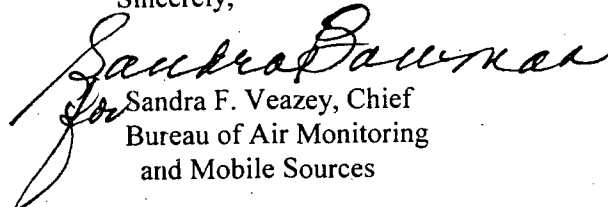
This is to acknowledge that your notification of intent to use the authority of Rule 62-210.310 to operate your facility was received on April 2, 2008. We have assigned ARMS No. 0810039-004 to this facility.

As you know, pursuant to Florida Statutes section 403.814, authority to operate under general permits commences thirty days after receipt of the registration form unless you have been notified by this office that your facility has not shown entitlement to operate pursuant to the rule provisions.

For your information, authority to operate pursuant to Rule 62-210.310 expires after 5 years. Therefore, a new registration form must be received no later than 5 years after the date your notice was received as indicated above. If your general permit rule conditions require testing, such testing must be completed within the time frame specified in the rule.

If you have any additional questions, please contact Dickson Dibble at 850/921-9586.

Sincerely,



Sandra F. Veazey, Chief
Bureau of Air Monitoring
and Mobile Sources

SFV/pg

cc: Mr. Christopher Bradley, Southwest District

RECEIVED

APR 04 2008

Bureau of Air Monitoring & Mobile Sources

HUMAN CREMATORY AIR GENERAL PERMIT REGISTRATION FORM

Part II. Notification to Permitting Office (Detach and submit to appropriate permitting office; keep copy onsite)

Instructions: To give notice to the Department of an eligible facility's intent to use this air general permit, the owner or operator of the facility must detach and complete this part of the Air General Permit Registration Form and submit it to the appropriate Department of Environmental Protection or local air pollution control program office which has permitting authority. Please type or print clearly all information, and enclose the appropriate air general permit registration processing fee pursuant to Rule 62-4.050(4)(o), F.A.C. (\$100 as of the effective date of this form)

0810039-004

Registration Type

Check one: INITIAL REGISTRATION - Notification of intent to: [] Construct and operate a proposed new facility. [] Operate an existing facility not currently using an air general permit (e.g., a facility proposing to go from an air operation permit to an air general permit). RE-REGISTRATION (for facilities currently using an air general permit) - Notification of intent to: [X] Continue operating the facility after expiration of the current term of air general permit use. [] Continue operating the facility after a change of ownership. [] Make an equipment change requiring re-registration pursuant to Rule 62-210.310(2)(e), F.A.C., or any other change not considered an administrative correction under Rule 62-210.310(2)(d), F.A.C.

Surrender of Existing Air Operation Permit(s) - For Initial Registrations Only

If the facility currently holds one or more air operation permits, such permit(s) must be surrendered by the owner or operator upon the effective date of this air general permit. In such case, check the first box, and indicate the operation permits being surrendered. If no air operation permits are held by the facility, check the second box. [X] All existing air operation permits for this facility are hereby surrendered upon the effective date of this air general permit; specifically permit number(s): 0810039003AG [] No air operation permits currently exist for this facility.

General Facility Information

Facility Owner/Company Name (Name of corporation, agency, or individual owner who or which owns, leases, operates, controls, or supervises the facility.) TOALE BROTHERS FUNERAL HOME Site Name (Name, if any, of the facility site; e.g., Plant A, Metropolis Plant, etc. If more than one facility is owned, a registration form must be completed for each.) 912 53RD AVENUE WEST Facility Location (Provide the physical location of the facility, not necessarily the mailing address.) Street Address: City: BRADENTON County: MANATEE Zip Code: 34207 Facility Start-Up Date (Estimated start-up date of proposed new facility.) (N/A for existing facility)

Owner/Authorized Representative

Name and Position Title (Person who, by signing this form below, certifies that the facility is eligible to use this air general permit.)

Print Name and Title: Jeff G. Toale, Vice-President

Owner/Authorized Representative Mailing Address

Organization/Firm: Toale Brothers Funeral Home
Street Address: 912 53rd Avenue West
City: Bradenton County: Manatee Zip Code: 34207

Owner/Authorized Representative Telephone Numbers

Telephone: 941/955-4171 Fax: 941/366-2167
Cell phone (optional):

Facility Contact (If different from Owner/Authorized Representative)

Name and Position Title (Plant manager or person to be contacted regarding day-to-day operations at the facility.)

Print Name and Title:

Facility Contact Mailing Address

Organization/Firm:
Street Address:
City: County: Zip Code:

Facility Contact Telephone Numbers

Telephone: Fax:
Cell phone (optional):

Owner/Authorized Representative Statement

This statement must be signed and dated by the person named above as owner or authorized representative

I, the undersigned, am the owner or authorized representative of the owner or operator of the facility addressed in this Air General Permit Registration Form. I hereby certify, based on information and belief formed after reasonable inquiry, that the facility addressed in this registration form is eligible for use of this air general permit and that the statements made in this registration form are true, accurate and complete. Further, I agree to operate and maintain the facility described in this registration form so as to comply with all applicable standards for control of air pollutant emissions found in the statutes of the State of Florida and rules of the Department of Environmental Protection and revisions thereof.

I will promptly notify the Department of any changes to the information contained in this registration form.


Signature

March 31, 2008
Date

Design Calculations

If this is an initial registration for a proposed new human crematory unit, provide design calculations to confirm a sufficient volume in the secondary chamber combustion zone to provide for at least a 1.0 second gas residence time at 1800 degrees F.

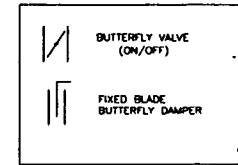
- Manufacturer's' design calculations attached.
- Registration is not for proposed new human crematory unit(s).

Description of Facility

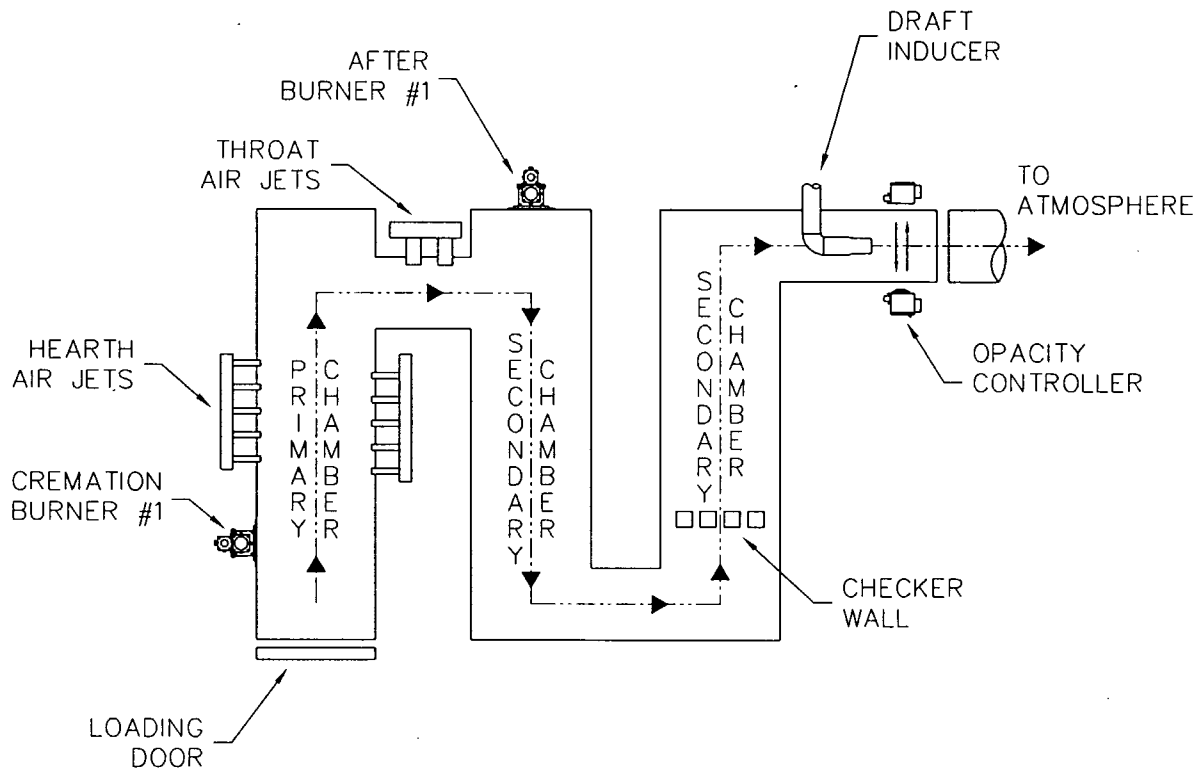
Below, or as an attachment to this form, provide a description of all crematory operations at the facility in sufficient detail to demonstrate the facility's eligibility for use of this air general permit and to provide a basis for tracking any future equipment or process changes at the facility. Describe all air pollutant-emitting processes and equipment at the facility, and identify any air pollution control measures or equipment used.

See attached process flow diagram.

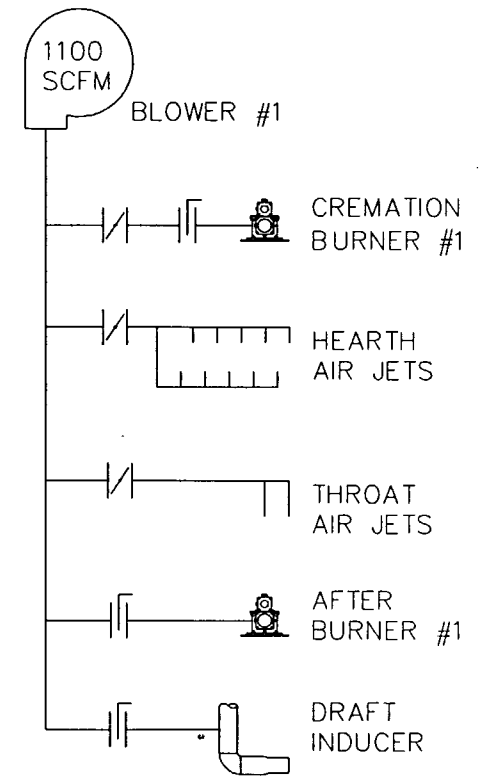
LEGEND OF SYMBOLS



FLOW DIAGRAM



AIR SCHEMATIC



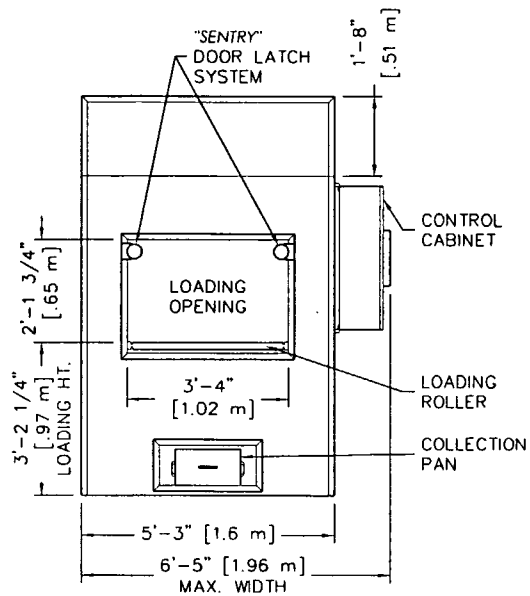
Matthews
CREMATION DIVISION

2045 Sprint Boulevard
Apopka, Florida 32703
USA

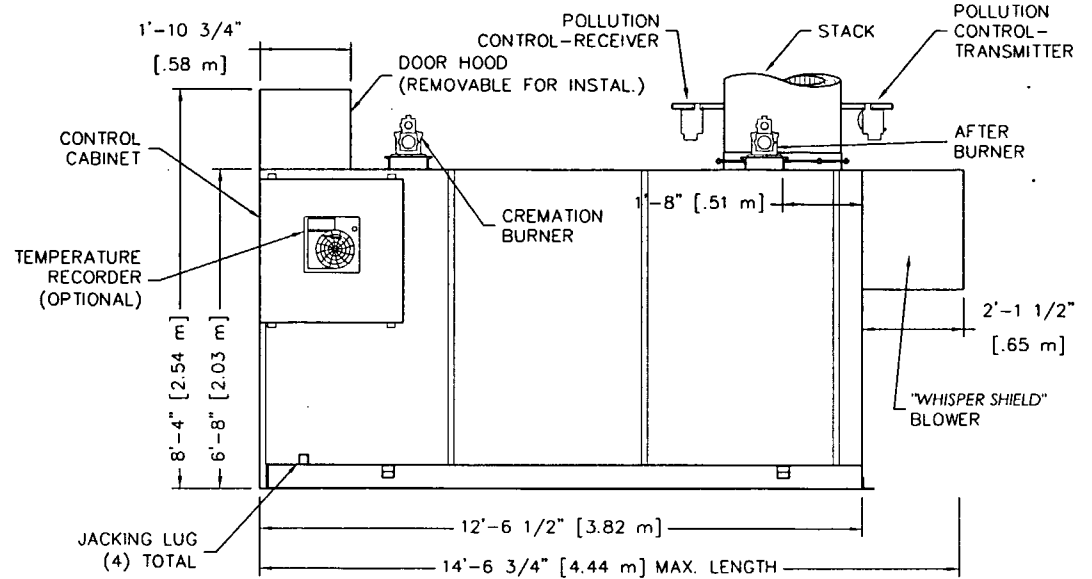
POWER PAK II

FLOW DIAGRAM
& AIR SCHEMATIC

DATE:	08-05-05	SCALE:	1/4"=1'
DRAWN:	JG	PLOT SCALE:	1:48
APRVD:		SHEET:	1 OF 1
DWG FILE:	PPIIFlowDiaAirSchem		
DWG #:	0000523		



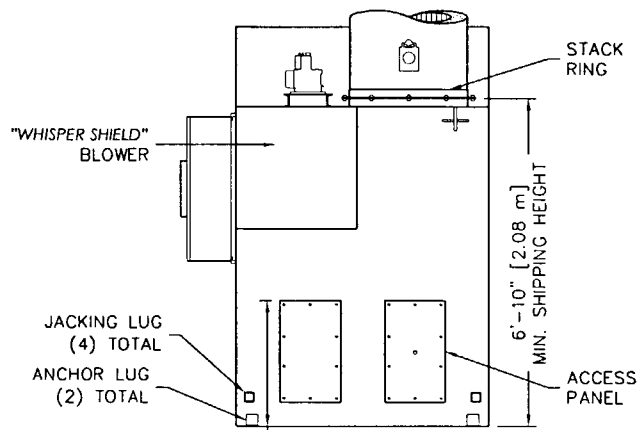
FRONT
ELEVATION



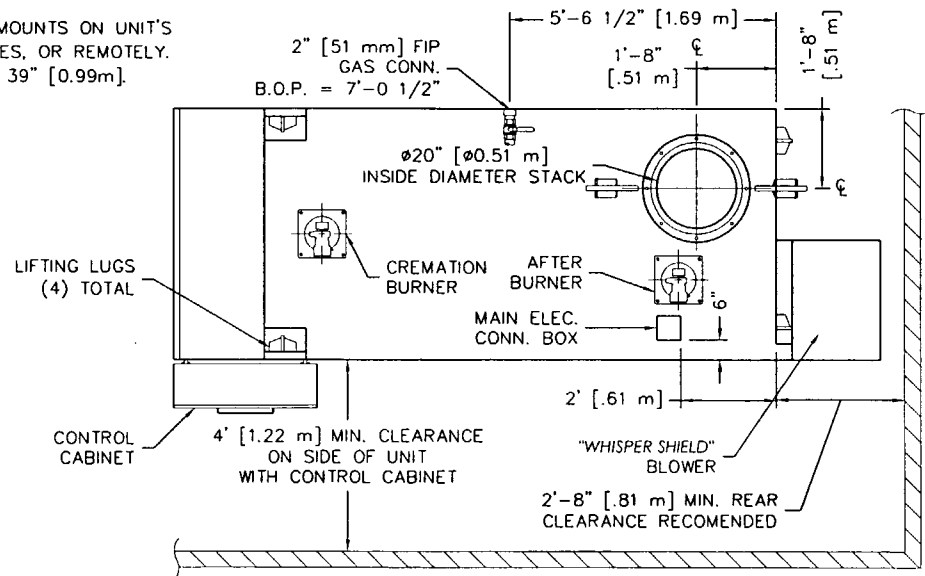
RIGHT SIDE
ELEVATION

NOTES:

- 1) CONTROL CABINET MOUNTS ON UNIT'S LEFT OR RIGHT SIDES, OR REMOTELY.
- 2) CHAMBER WIDTH IS 39" [0.99m].



REAR
ELEVATION



PLAN
VIEW



2045 Sprint Boulevard
Apopka, Florida 32703
USA

POWER-PAK II

PLAN & ELEVATIONS INCL: CLEARANCES,
REQUIREMENTS & RECOMENDATIONS

DATE:	10-26-06	SCALE:	1/4"=1'
DRAWN:	JG	PLOT SCALE:	1:48
APRVD:		SHEET:	1 OF 2
DWG FILE:	PPII-MarketingPlanElevS1R4		
DWG #:	0000140		

SPECIFICATIONS- Model Power-Pak II

1. Equipment Type Model Power-Pak II
 - A. Model No. IE43-PPII
 - B. Underwriters Laboratories Listing and File No. ... 87E8; MH14647

2. Dimensions
 - A. Footprint 12' – 6 ½" x 6' – 8"
 - B. Maximum Length 14' - 6½" (4.43 m)
 - C. Maximum Width 6' -5" (1.96 m)
 - D. Maximum Height 8' - 4" (2.54 m)
 - E. Chamber Loading Opening 25 ¾" H x 39" W (655 mm x 990 mm)

3. Weight 24,000 lbs. (11,000 kg)

4. Utility/Air Requirements
 - A. Gross Gas Input, Natural or LP Gas 2,000,000 BTU/hr. (2,100,000 kJ/h)
 2,500,000 BTU/hr. (2,600,000 kJ/h) if equipped with preheat burner
 - Running Gas Pressure, Natural Gas 7 inches (180 mm) water column or greater
 - Running Gas Pressure, LP Gas 11 inches (280 mm) water column or greater
 - B. Electrical Supply 230 volt, 3Ø or 1Ø, 50/60 hz (other available)
 - C. Air Supply 2,500 cfm (70 standard m³/min)

5. Incineration Capacity 150 lbs./hr. (68 kg/h)

6. Typical Loading Capacity of Waste Types 750 lbs. (340 kg/h)

7. Construction and Safety Standards Incineration Institute of America, Underwriters Laboratories, Canadian Standards Association

8. Steel Structure Construction
 - A. Frame 2" (51 mm) square tubing
 - B. Front/Rear Plates 3/8" (10 mm) plate
 - C. Floor Plates 3/16" (5 mm) plate
 - D. Outer Side Casing 12 gauge (3 mm) plate
 - E. Inner Side Casing 12 gauge (3 mm) plate

9. Stack Construction
 - A. Inner Wall 4 1/2" (110 mm) insulating firebrick or castable
 - B. Outer Wall 12 gauge (3 mm) sheet, 304 s.s., welded seams (unlined stack available)

10. Draft Nozzle Construction Schedule 40 type 316 s.s. pipe, welded connections

11. Main Chamber Door Construction
 - A. Steel Shell 3/16" (5 mm) steel, welded with reinforcement
 - B. Outer Refractory 1" (25 mm) insulating block
 - C. Inner Refractory 4½" (110 mm) insulating firebrick

12. Primary Chamber Wall Construction
 - A. Outer Casing Wall 12 gauge (3 mm) sheet
 - B. Inner Frame/Air Compartment 2" (51 mm) air compartment
 - C. Inner Casing Wall 12 gauge (3 mm) sheet

SPECIFICATIONS- Model Power-Pak II

- D. Outer Refractory Wall 5" (127 mm) insulating block
 - E. Inner Refractory Wall 4½" (110 mm) firebrick
13. Secondary Chamber Wall Construction
- A. Outer Casing Wall..... 12 gauge (3 mm) sheet
 - B. Inner Frame/Air Compartment 2" (51 mm) air compartment
 - C. Inner Casing Wall 12 gauge (3 mm) sheet
 - D. Outer Refractory Wall 6" (150 mm) insulating block
 - E. Inner Refractory Wall 4½" (110 mm) firebrick
14. Refractory Temperature Ratings
- A. Standard Firebrick..... 3,100° F. (1700° C)
 - B. Insulating Firebrick..... 2,600° F. (1430° C)
 - C. Castable Refractory (Hearth) 2,550° F. (1370° C)
 - D. Castable Refractory 2,550° F. (1370° C)
 - E. Insulating Block..... 1,900° F. (1040° C)
 - F. Bonding Mortar 3,200° F. (1760° C)
15. Chamber Volumes (not including external flues, stacks or chimneys)
- A. Primary Chamber 64 cubic feet (2.0 m³)
 - B. Secondary Chamber 74 cubic feet (2.0 m³)
16. Emission Control Features
- A. Secondary Chamber with Afterburner Included
 - B. Opacity Monitor and Controller with Visual and Audible Alarms..... Included
 - C. Auxiliary Air Control System..... Included
 - D. Microprocessor Temperature Control System..... Included
17. Operating Temperatures
- A. Primary Chamber..... 1,200° F. - 1,800° F. (650° C - 1000° C)
 - B. Secondary Chamber 1,400° F. - 1,800° F. (760° C - 1000° C) as required
18. Secondary Chamber Retention Time..... > 1 second
19. Ash Removal Door functions as a heat shield. Sweep out beneath front door into hopper that fills collection pan.
20. Safety Interlocks
- A. High Gas Pressure..... Optional
 - B. Low Gas Pressure Optional
 - C. Blower Air Pressure Included
 - D. Door Position Included
 - E. Opacity Included
 - F. Motor Starter Function Included
 - G. Chamber Temperature..... Included
 - H. Motor Overload Included
 - I. Flame Quality..... Included
 - J. Burner Safe Start Included
22. Burner Description The nozzle mix burners used on this cremation equipment are industrial quality and designed

SPECIFICATIONS- Model Power-Pak II

for incinerator use.

- 23. Ultraviolet Flame Detection..... Ultraviolet flame detection has proven to be the most reliable means of flame safety. The system is completely sealed in a quartz capsule to eliminate problems, caused by moisture and dust created in the cremation process, which effect flame rod detectors.
- 24. Operating Panel Indicating Lights
 - A. Safe Run..... Included
 - B. Door Closed..... Included
 - C. Pollution Alarm..... Included
 - D. Afterburner On (Secondary Burner)..... Included
 - E. Cremation Burner On..... Included
 - F. Low Fire Cremation Burner On..... Included
 - G. Afterburner (Secondary Burner) Reset..... Included
 - H. Cremation Burner Reset..... Included
 - I. Hearth Air..... Included
 - J. Throat Air Off..... Included
- 25. Automatic Timer Functions
 - A. Master Cycle..... Included
 - B. Afterburner (Secondary Burner)..... Included
 - C. Cremation Burner..... Included
 - D. Low Fire Cremation Burner..... Included
 - E. Hearth Air..... Included
 - F. Throat Air..... Included
 - G. Pollution Monitoring..... Included
 - H. Afterburner (Secondary Burner) Prepurge..... Included
 - I. Cremation Burner Prepurge..... Included
 - J. Cool Down..... Included
- 26. Exterior Finish
 - A. Primer..... 2 coats rust inhibiting
 - B. Finish..... 2 coats textured finish
- 27. Start-Up and Training Startup of cremation equipment and training of operators to properly operate and maintain the equipment is performed on-site under actual operating conditions. Included is a comprehensive owner's manual, with details on the equipment, its components and proper operation.
- 28. Environmental Submittals Complete technical portion of state environmental permits. Engineering calculations, technical data, existing stack test results and equipment blueprints provided.

**AIR COMPLIANCE TEST
REPORT**

**PERMIT NO. 1110050-001-AG
UNIT ID: 001**

CREMATORY INCINERATOR

PREPARED FOR:

**HAISLEY-HOBBS FUNERAL
HOME**

**FORT PIERCE, FLORIDA
MARCH 26, 2004**

PREPARED BY:

ATC



AIR TESTING & CONSULTING

**333 FALKENBURG ROAD, SUITE B-214
TAMPA, FLORIDA 33619**

1.0 INTRODUCTION

On March 26, 2004, Air Testing & Consulting, Inc., conducted the following tests on the human crematory located at Haisley-Hobbs Funeral Home, Ft. Pierce, St. Lucie County:

- (1) *Particulate Emission (EPA Methods 1 – 5)*
- (2) *Carbon Monoxide (EPA Method 10)*
- (3) *Visible Emissions (EPA Method 9)*

These tests were performed to determine if the incinerator was operating within the guidelines of Permit No. 1110050-001-AG, the Florida Department of Environmental Protection (FDEP).

3.0 SUMMARY OF RESULTS

The results of the Particulate, Carbon Monoxide (CO) and Opacity (VE) emission testing are presented in the Regulatory Summary and Table I. The Particulate emissions averaged 0.0723 grains per dry standard cubic foot (gr/dscf) and the CO emissions averaged 8.3 parts per million (ppmv), each corrected to 7% O₂. Opacity, highest six- minute average, was 0%.

Process rates were determined by plant personnel and are included in the appendix.

**REGULATORY SUMMARY
 HAISLEY-HOBBS FUNERAL HOME
 HUMAN CREMATORY
 MARCH 26, 2004**

PERMIT NO. NEDS NO. ID #	EPA METHOD	METHOD DESCRIPTION	ACTUAL EMISSION RATE	ALLOWABLE EMISSION RATE	PROCESS RATE POUNDS PER HOUR	
					ACTUAL	PERMIT
1110050-001-AG 001	5	PARTICULATE gr/dscf @ 7% O2	0.072	0.080	80	100
	10	CARBON MONOXIDE ppmv @ 7% O2	8	100		
	9	VISIBLE EMISSIONS % Opacity	0	5% except for 20% up to 3 min/hr		

TABLE I
TEST SUMMARY
HAISLEY-HOBBS FUNERAL HOME
HUMAN CREMATORY
MARCH 26, 2004

RUN #	% O ₂	PARTICULATE GR/DSCF @ 7% O ₂	CO ppmv @ 7% O ₂	BODY WEIGHT	BURN RATE lbs/hr
1	12.0	0.1385	12.0	230	110
2	12.3	0.0190	10.0	160	58
3	11.8	0.0594	3.0	180	72
AVG	12.0	0.0723	8.3	190	80

SUMMARY OF TEST DATA

PLANT : HAISLEY

UNIT : CREAMATORY

RUN NUMBERS :1, 2, 3

TEST DATE : 03/26/2004

	#1	#2	#3	AVERAGES
DATE	03/26/2004	03/26/2004	03/26/2004	
START TIME	9:14	12:45	16:05	
END TIME	10:24	13:51	17:14	
STACK DIAMETER (INCHES)	20	20	20	
NOZZLE DIAMETER (INCHES)	0.618	0.618	0.618	
TEST TIME (MINUTES)	60	60	60	
NUMBER OF TEST POINTS PER RUN	24	24	24	
STACK GAS TEMPERATURE (°F)	883.1	760.5	857	833.4
STACK GAS MOISTURE (%)	12.32	12.75	10.80	12.0
STACK GAS MOLECULAR WEIGHT	28.52	28.47	28.70	28.6
STACK GAS VOLUME SAMPLED (CUBIC FEET)	43.927	35.214	41.000	40.047
VOLUME SAMPLED (SCF @ 68°F)	43.500	34.784	42.000	40.095
STACK GAS VELOCITY (FEET PER SECOND)	15.09	11.39	14.49	13.65
STACK GAS FLOW RATE (ACFM)	1975.3	1490.4	1896.2	1787.3
STACK GAS FLOW RATE (DSCFM @ 68°F)	690.9	570.9	688.3	650.0
PARTICULATE CONC (GRAINS/DSCF)	0.0887	0.0118	0.0391	0.0465
PARTICULATE CONC @ 7% O2, (GRAINS/DSCF)	0.1385	0.0190	0.0594	0.0723
PARTICULATE MASS RATE (LBS/HOUR)	0.525	0.070	0.232	0.276
CO CONC , ppm	8	6	2	5
CO CONC @ 7% O2, ppm	12	10	3	8
ISOKINETIC SAMPLING RATE, %I	109.93	106.38	106.53	

FIELD DATA AND SAMPLES UNDER THE CONTROL OF:

TIM O'DELL

LABORATORY ANALYSIS UNDER THE CONTROL OF:

ATC

**Florida Department of Environmental Protection
Cash Receiving Application (CRA)
Cashlisting by Deposit #: 281562 thru 281562
Printed: 4/2/2008 4:34:40 PM - Page 11**

Cashlisting: **67650** Cashlist Area: **3755** Description: **DIV OF AIR RESOURCES MGMT.**
 Deposit No: **281562** Date Deposited: **04/02/2008** Contact: **E. WALKER**

Object	Transmittal	Dep DDN	Receipt Number	Pre-Numbered Receipt	Name	Check Number	Payment Amount	Reference Account	Payment Number	Remittance Number	Fund
002272	47711	481722	620728		TOALE BROTHERS FUNERAL HOMES	18240	\$100.00	8810039-084 4/14/2008-HC	868134	770987	PFTF
Object Code 002272 Subtotal:							\$100.00				
002275	47711	481715	620721		TIMOTHY J SMITH	1265	\$402.50	0571320	868118	770980	APCTF
	47711	481718	620724		PINELLAS COUNTY BOCC	920354	\$8,486.41	1030117	868123	770983	APCTF
Object Code 002275 Subtotal:							\$8,888.91				
002276	47711	481718	620724		PINELLAS COUNTY BOCC	920354	\$4,321.00	1030117	868124	770983	APCTF
Object Code 002276 Subtotal:							\$4,321.00				
002278	47711	481719	620725		M & M COOP CONSTRUCTION CO INC	1559	\$200.00	48078	868125	770984	APCTF
Object Code 002278 Subtotal:							\$200.00				
Cashlisting 67650 Total:							\$13,509.91				