

524922 SEP14 2011

RECEIVED

CONCRETE BATCHING PLANT  
AIR GENERAL PERMIT REGISTRATION FORM

SEP 15 2011

Part II. Notification to Permitting Office  
(Detach and submit to appropriate permitting office; keep copy onsite)

DIVISION OF AIR  
RESOURCE MANAGEMENT

Instructions: To give notice to the Department of an eligible facility's intent to use this air general permit, the owner or operator of the facility must detach and complete this part of the Air General Permit Registration Form and submit it to the appropriate Department of Environmental Protection or local air pollution control program office which has permitting authority. Please type or print clearly all information, and enclose the appropriate air general permit registration processing fee pursuant to Rule 62-4.050, F.A.C. (\$100 as of the effective date of this form)

0694850-002

Registration Type

Check one:

INITIAL REGISTRATION - Notification of intent to:

- Construct and operate a proposed new facility.
- Operate an existing facility not currently using an air general permit (e.g., a facility proposing to go from an air operation permit to an air general permit).

RE-REGISTRATION (for facilities currently using an air general permit) - Notification of intent to:

- Continue operating the facility after expiration of the current term of air general permit use.
- Continue operating the facility after a change of ownership.
- Make an equipment change requiring re-registration pursuant to Rule 62-210.310(2)(e), F.A.C., or any other change not considered an administrative correction under Rule 62-210.310(2)(d), F.A.C.

Surrender of Existing Air Operation Permit(s) - For Initial Registrations Only

If the facility currently holds one or more air operation permits, such permit(s) must be surrendered by the owner or operator upon the effective date of this air general permit. In such case, check the first box, and indicate the operation permits being surrendered. If no air operation permits are held by the facility, check the second box.

- All existing air operation permits for this facility are hereby surrendered upon the effective date of this air general permit; specifically permit number(s): \_\_\_\_\_
- No air operation permits currently exist for this facility.

General Facility Information

Facility Owner/Company Name (Name of corporation, agency, or individual owner who or which owns, leases, operates, controls, or supervises the facility.)

Dura-Stress Underground, Inc.

Site Name (Name, if any, of the facility site; e.g., Plant A, Metropolis Plant, etc. If more than one facility is owned, a registration form must be completed for each.)

Dura-Stress Underground, Inc.

Facility Location (Provide the physical location of the facility, not necessarily the mailing address.)

Street Address: 11043 County Road 44 E

City: Leeburg

County: Lake

Zip Code: 34788-2699

Facility Start-Up Date (Estimated start-up date of proposed new facility.) (N/A for existing facility)

N/A

**Owner/Authorized Representative**

Name and Position Title (Person who, by signing this form below, certifies that the facility is eligible to use this air general permit.)

Print Name and Title: Scott Edwards, President

*edwards@dsuprecast.net*

Owner/Authorized Representative Mailing Address

Organization/Firm: Dura-Stress Underground, Inc.

Street Address: P.O. Box 350729

City: Grand Island

County: Lake

Zip Code: 32735

Owner/Authorized Representative Telephone Numbers

Telephone: 321 720-7491

Fax:

Cell phone (optional):

**Facility Contact (If different from Owner/Authorized Representative)**

Name and Position Title (Plant manager or person to be contacted regarding day-to-day operations at the facility.)

Print Name and Title: Tony Allen, Plant Manager

*chris@dsuprecast.com*

Facility Contact Mailing Address

Organization/Firm: Durastress Underground, Inc.

Street Address: P.O. Box 350729

City: Grand Island

County: Lake

Zip Code: 32735

Facility Contact Telephone Numbers

Telephone: 800 762-3520

Fax: 352 787-4011

Cell phone (optional):

**Owner/Authorized Representative Statement**

This statement must be signed and dated by the person named above as owner or authorized representative

*I, the undersigned, am the owner or authorized representative of the owner or operator of the facility addressed in this Air General Permit Registration Form. I hereby certify, based on information and belief formed after reasonable inquiry, that the facility addressed in this registration form is eligible for use of this air general permit and that the statements made in this registration form are true, accurate and complete. Further, I agree to operate and maintain the facility described in this registration form so as to comply with all applicable standards for control of air pollutant emissions found in the statutes of the State of Florida and rules of the Department of Environmental Protection and revisions thereof.*

*I will promptly notify the Department of any changes to the information contained in this registration form.*

*Scott Edwards*

*9/12/11*

Signature

Date

**Type of Facility**

Check one:

Stationary Facility                       Relocatable Facility

**Type(s) of Reasonable Precautions Used to Prevent Unconfined Emissions**

Check all precautions to be used for the management of roads, parking areas, stock piles and yards:

<input type="checkbox"/> Pave Roads	<input type="checkbox"/> Pave Parking Areas	<input type="checkbox"/> Pave Yards
<input checked="" type="checkbox"/> Maintain Roads/Parking/Yards	<input checked="" type="checkbox"/> Use Water Application	<input type="checkbox"/> Use Dust Suppressant
<input type="checkbox"/> Remove Particulate Matter	<input type="checkbox"/> Reduce Stock Pile Height	<input type="checkbox"/> Install Wind Breaks

Check all precautions to be used for the management of drop points to trucks:

<input type="checkbox"/> Spray Bar	<input checked="" type="checkbox"/> Chute	<input type="checkbox"/> Enclosure
	<input type="checkbox"/> Partial enclosure	

**Description of Reasonable Precautions**

Below, or as an attachment to this form, provide details of all types of reasonable precautions to be used to prevent unconfined emissions at the facility.

Maintain Roads/Parking/Yards -- Recycled crushed concrete rock used instead of gravel or limerock.

Use Water Application -- Sprinkler systems or mobile water-spray truck used to keep the dust down.

Chute -- Canvas chute from the mixer to the mud trucks prevents concrete loss from the system.

**Description of Facility**

Below, or as an attachment to this form, provide a description of the concrete batching plant operations at the facility in sufficient detail to demonstrate the facility's eligibility for use of this air general permit and to provide a basis for tracking any future equipment or process changes at the facility. Describe all air pollutant-emitting processes and equipment at the facility, and identify any air pollution control measures or equipment used.

Durastress Underground, Inc. manufactures pre-cast concrete structures for underground construction projects. The facility operates a stationary concrete batch plant onsite.

Design specifications of the concrete batch plant include the following process equipment:

- Four (4) 62.5-ton compartment aggregate storage bins (250.0-tons total) with a 590-cu.ft. aggregate batcher
- Two (2) 4,000-cu.ft. (water level) cement storage bins (8,000-cu.ft total) with a 6-yd cement batcher
- Central mixer
- 180-ft L x 30-in W truss conveyor to convey aggregate from a 15-ton dump hopper at ground level to the top of the 59-ft H aggregate storage bin

Particulate emissions control equipment includes the following control devices:

- One (1) 1,020-sq.ft. fabric filter system atop each of the two cement silo vents (two filters total)
- One (1) 80-sq.ft. fabric filter connected to the cement batcher vent

The filters are 100% polyester pleated media. The systems are free flow air trap systems designed to operate at 200 cfm. All trapped particulates are recycled into the system. The filters have been tested and found to be 99.995% efficient for particulates one micron in size or greater.

*\*NEED TO IDENTIFY CONTROL DEVICES*

- 1) MFR*
- 2) MODEL #*

*\* SEE E-MAIL DATED 09/22/11 AS*

*AN ADDENDUM TO THIS FORM.*

*Q.*

ADDENDUM TO # 0694850-002  
PAGE 10, DESCRIPTION OF FACILITY

Dibble, Dickson

From: Chris Schwab [chris.schwab@dsuprecast.com]  
Sent: Thursday, September 22, 2011 2:30 PM  
To: Dibble, Dickson  
Subject: Filter type and Manufacturer  
Attachments: Silo Filter Vent Cartridge Type.pdf

Mr. Dibble,

I have attached a Pdf directly from the Eyster Group who installed our Batch Plant for us.

A: SOS-1020 (450 Sq. Ft.) silo cartridge vent. Three cartridges that can be replaced from outside the vent housing. Cartridges are cleaned by pulse air reversing through the cartridge. Air manifold is supplied with vent.

B: SOS-80 (77 Sq. Ft.) (cartridge type) cement batcher vent one cartridge that can be replaced from outside the vent housing. Cartridge is cleaned by pulse air. Air manifold is supplied with vent,

Cartridge Specifications

Style:	ECO 23W pleated
Fiber:	100% polyester
Media Efficiency:	99.995% at 1 micron and above
Air permeability:	28 CFM @ 1/2" delta P
Thermal Stability:	2% maximum at 250 degrees Fahrenheit
Moisture tolerant:	can be washed and reused
Max operating temp.:	275 degree Fahrenheit (fabric) elements 200 deg Fahrenheit (higher temp rating constr. Available)

I hope that this is the Information that you are looking for. Please contact me if anything is amiss.

--  
Christopher S. Schwab,  
Human Resources and Purchasing  
Dura-Stress Underground, Inc.  
Phone# (800) 762-3520 or (352) 315-1134  
Fax# (352) 787-4011  
Email at: [chris.schwab@dsuprecast.com](mailto:chris.schwab@dsuprecast.com)

## Silo Filter Vent Cartridge Type

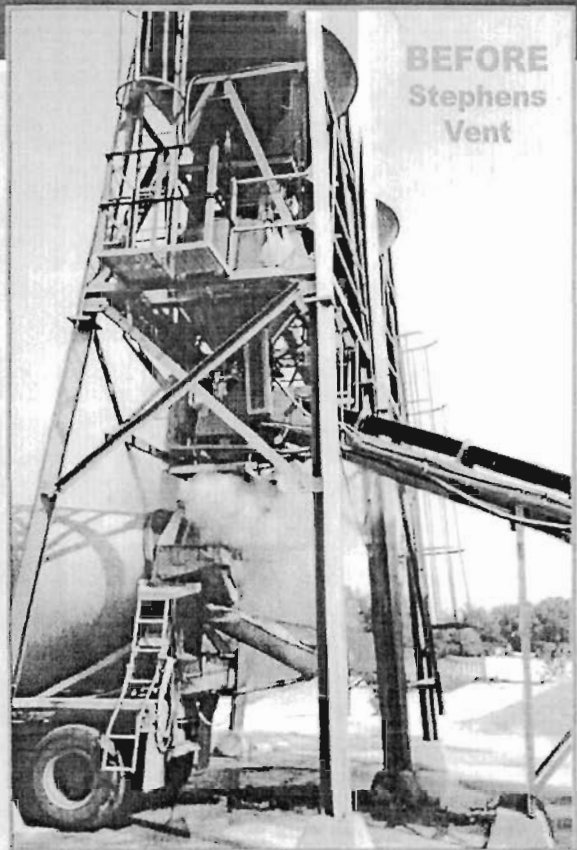
A: SOS-1020 (450 Sq. Ft.) silo cartridge vent. Three cartridges that can be replaced from outside the vent housing. Cartridges are cleaned by pulse air reversing through the cartridge. Air manifold is supplied with vent.

B: SOS-80 (77 Sq. Ft.) (cartridge type) cement batcher vent one cartridge that can be replaced from outside the vent housing. Cartridge is cleaned by pulse air. Air manifold is supplied with vent,

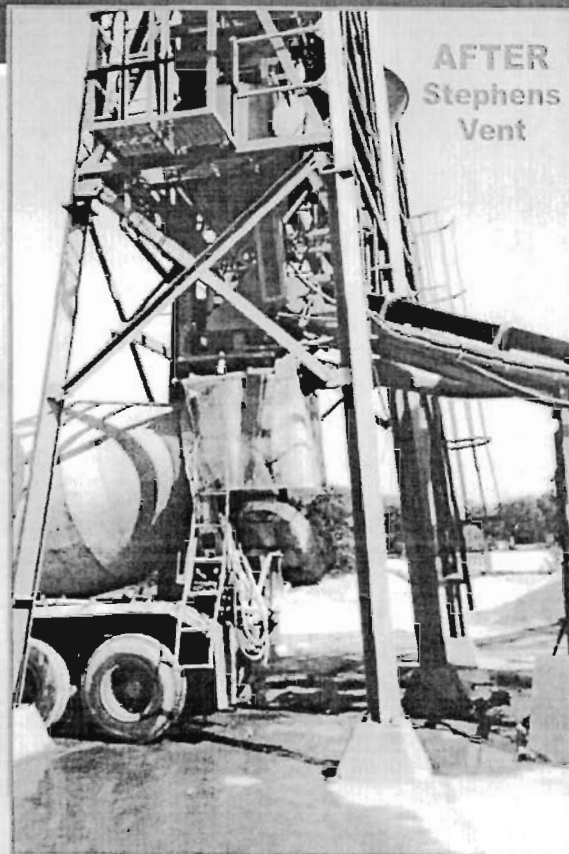
### Cartridge Specifications

Style:	ECO 23W pleated
Fiber:	100% polyester
Media Efficiency:	99.995% at 1 micron and above
Air permeability:	28 CFM @ ½" delta P
Thermal Stability:	2% maximum at 250 degrees Fahrenheit
Moisture tolerant:	can be washed and reused
Max operating temp.:	275 degree Fahrenheit (fabric) elements 200 deg Fahrenheit (higher temp rating constr. Available)

# DUST COLLECTORS



**BEFORE  
Stephens  
Vent**



**AFTER  
Stephens  
Vent**

**FOR:**

- READY MIX TRUCKS**
- CENTRAL MIXER**
- CEMENT & FLYASH SILOS**
- CEMENT WEIGH BATCHER**

Stephens Mfg. has been supplying the concrete industry with quality filtration systems for more than thirty years. Whatever your particular need, Stephens Mfg. has the experience to meet your environmental requirements. Stephens Mfg. maintains a complete stock of equipment and parts ready for next day delivery.

CALL 1-800-626-0200  
FOR MORE INFORMATION.


# Stephens

**MFG. CO. INC.**

TOMPKINSVILLE, KY 42167  
1-800-626-0200 • (270) 487-6774  
Fax: (270) 487-8368



**MEMBER OF:**









WE SUPPORT

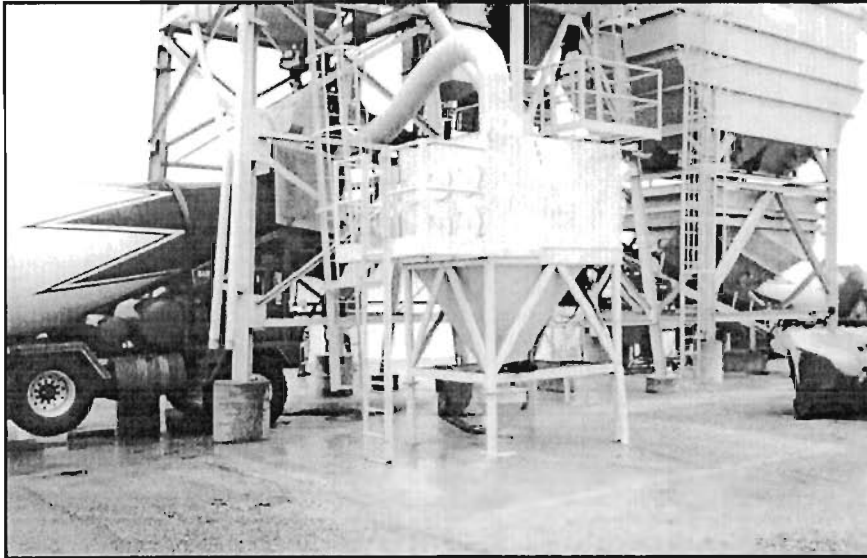


**NRMCA  
VISION**

*Enriching • Inspiring  
Empowering*

[www.stephensmfg.com](http://www.stephensmfg.com)

## Vents For Ready Mix Trucks

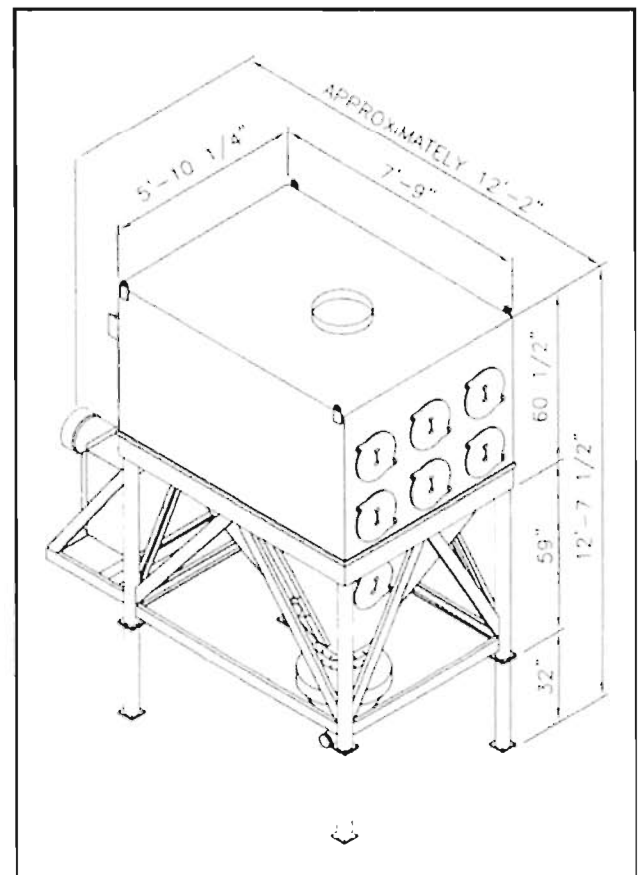


Easy access for Cartridge Replacement; no tools required.

Heavy Duty (High Frequency) Blower. 8" static pressure.

Automatic cleaning when necessary. Magnehelic Gauge for inspecting conditions of cartridges.

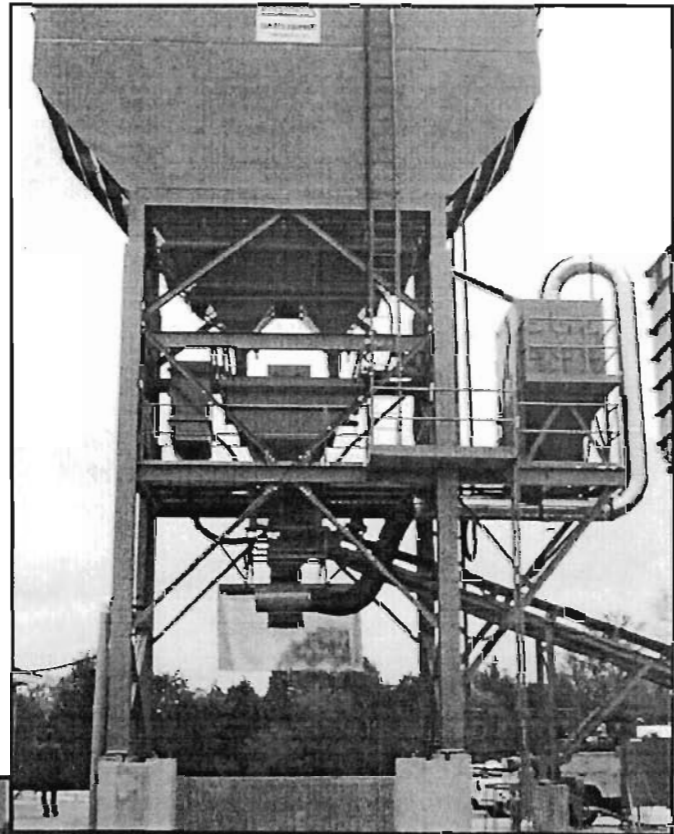
- Control box is standard with each **Stephens Ozone Super-flow vent**. Panel is complete with magnetic starter, filter regulator and magnehelic gauge. (Disconnect Optional)
- Stationary Back in Hood Standard
- Duct Work Package Standard
- Aerodynamic design. The **Stephens Ozone Super-flow Vents** are designed to permit the free-fall of dislodged dust to the hopper and is designed to prevent direct impingement of dust particles on the media which minimizes abrasion and dust build-up.
- No Confined areas: The **Stephens Ozone Super-flow** is designed so the filter replacement is from the outside of the unit. Personnel do not have to enter the collector to change filter elements, no tools are required.



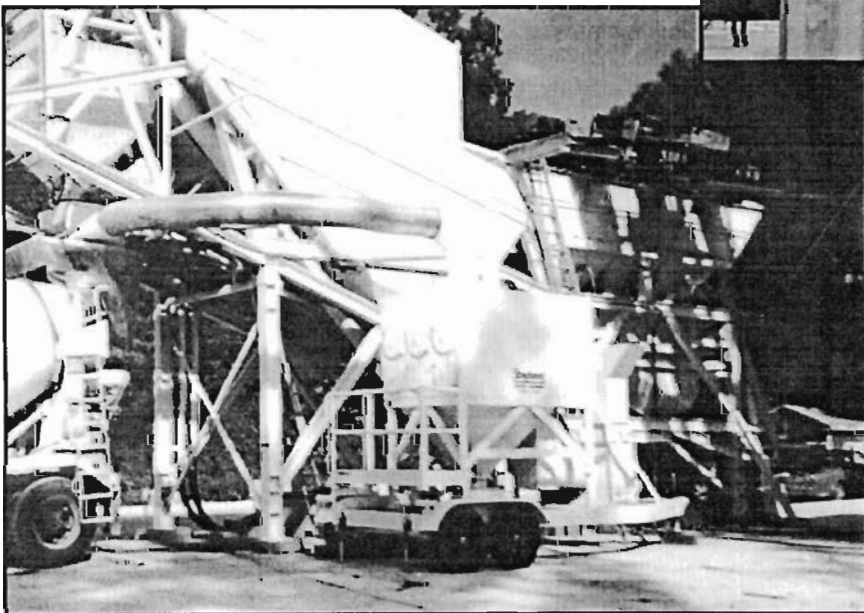


# Available SOS Models

SOS 2700 .....	8 Cartridges	15 HP Motor - 5600 CFM
SOS 3400 .....	10 Cartridges	15 HP Motor - 6200 CFM
SOS 4000 .....	12 Cartridges	20 HP Motor - 8000 CFM
SOS 6100 .....	18 Cartridges	20 HP Motor - 8000 CFM
SOS 6800 .....	20 Cartridges	25 HP Motor - 12,000 CFM
SOS 8000 .....	24 Cartridges	30 HP Motor - 15,000 CFM



**ELEVATED STRUCTURE  
& WORK PLATFORM**

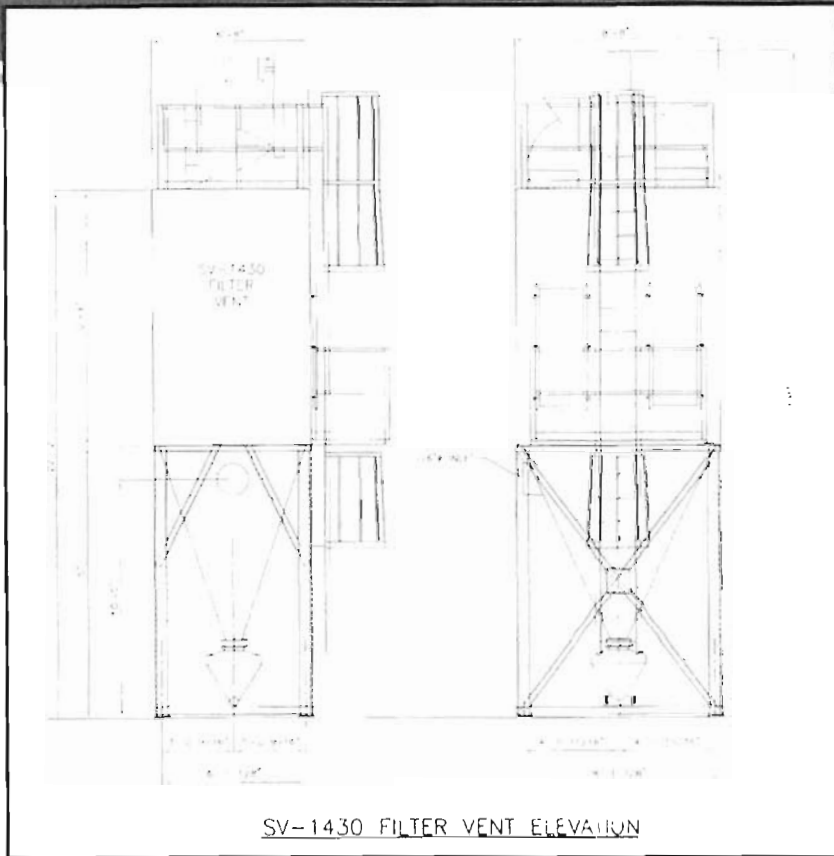


## MOBILE UNITS AVAILABLE

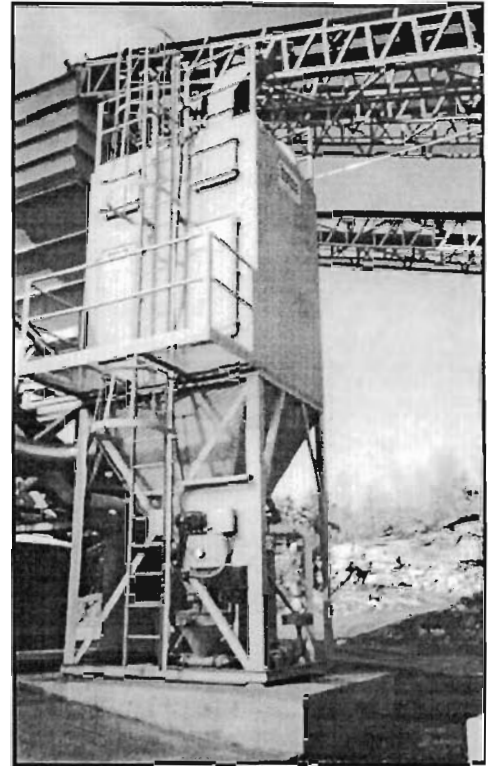
Complete with axle and electric break. Different type "Hook Ups" available. (fifth wheel, ball and pintle)

## OPTIONAL EQUIPMENT:

- An elevated structure is available for truck clearance.
- Caged ladder and work platform with handrails and toeboard. (For standard and elevated vents.)
- Drive-through style hoods.
- Blower to transfer material from pod back in flyash silo.



SV-1430 FILTER VENT ELEVATION



## SV-1435 Reverse Air (bag type) Dust Collector

### STANDARD EQUIPMENT:

- 1,430 Square Feet.
- 6000 CFM blower with 20 HP motor.
- Two compartments for continuous cleaning.
- Platform and handrails with ladder to grade.
- Magnehelic gauge for visual inspection.
- Magnetic starter with controls.
- Filter bags 99.6% efficient to one micron in size.
- Stationary hood.
- Blow back pod.

### OPTIONAL EQUIPMENT:

- Disconnect
- Special designed hoods
- Portable option
- Recycle option manual and automatic

### FILTER BAG SPECIFICATIONS:

Fiber .....	Polyester Dacron, Felt
Construction .....	Duo-Density, Single Singed
Weight .....	9 Oz. Sq. Yd.
Air Permeability .....	30-40 CFM Sq. Ft.
Mullen Burst.....	250 Lbs.
Breaking .....	Fill: 175 Lbs.
Strength .....	Warp: 140 Lbs.
Temp. Range .....	220 <sup>o</sup> -270 <sup>o</sup>
Recovery .....	99.6% to One Micron Size

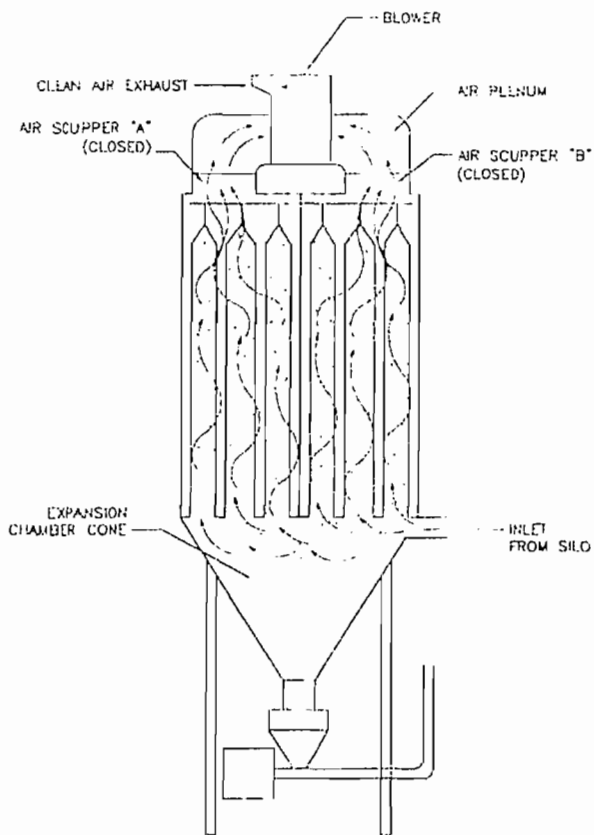


FIGURE 1

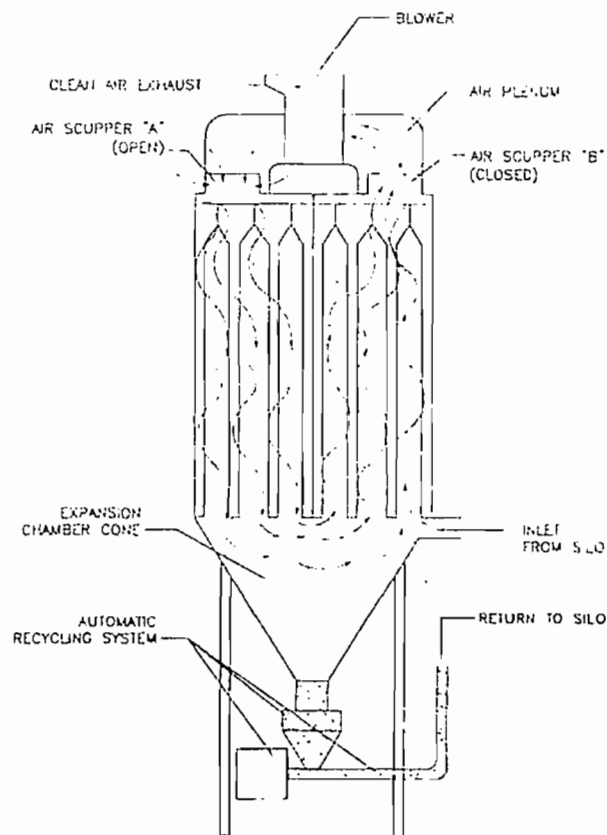


FIGURE 2

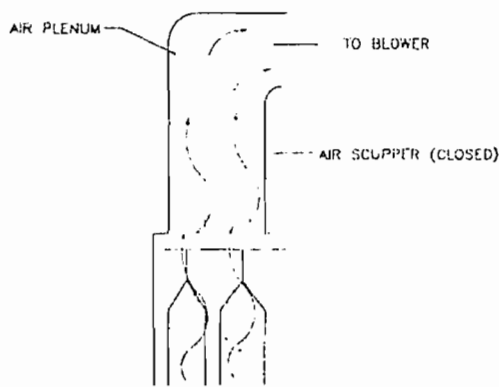


FIGURE 3

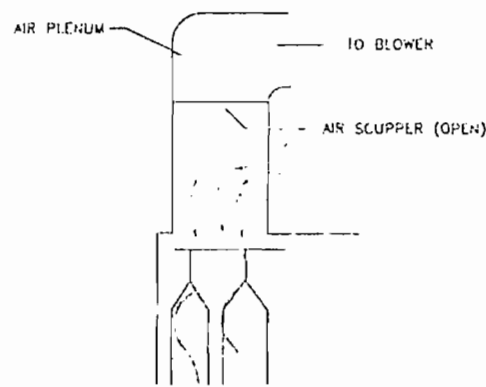


FIGURE 4

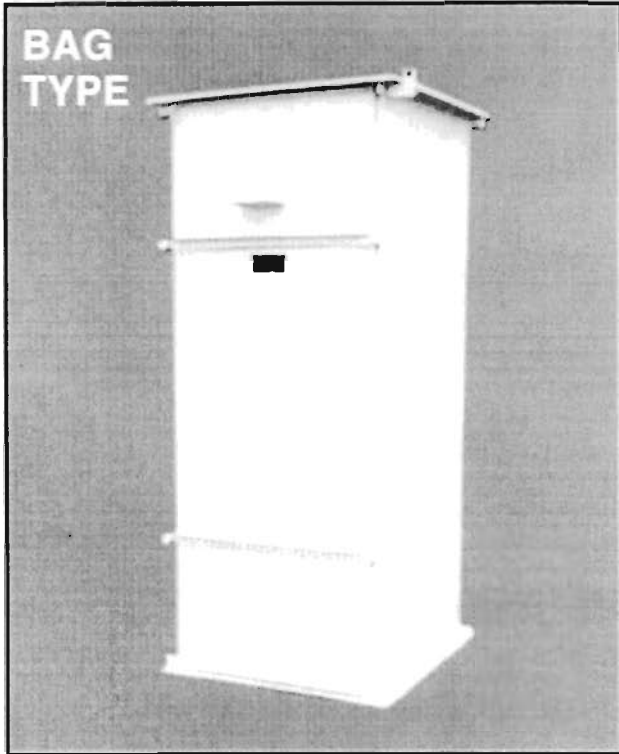
### OPERATION OF REVERSE AIR CLEANING SYSTEM

The Stephens Reverse Air Dust Collection System is supplied with an air plenum/blower assembly equipped with two pneumatically actuated air scuppers. Depending on the position of the scupper doors (see fig. 3 & 4), air can either be drawn from the filter bag chambers (A or B, fig. 1), or outside air can be drawn into the filter bag chambers.

Figure 1 illustrates normal operation of the system, whereas, with both scupper doors closed, contaminated air is drawn into the system through both expansion chambers A & B and passes through the filter bags, at which time dust particles remain within the bags while clean air passes through the bags and air plenum and is exhausted into the atmosphere at the blower.

Figure 2 illustrates operation of the system in the cleaning mode, whereas, scupper door A is open while door B remains closed, which results in clean outside air being drawn into filter bag chamber A, it then passes through and cleans the filter bags, depositing dust, the air then continues up through the filter bags in chamber B, and is exhausted into the atmosphere. At the same time contaminated air entering the expansion chamber from the silo is also being cleaned as it passes through chamber B. The material deposited in the cone can then be processed through the recycling system back to the flyash silo. The above process is then reversed to clean filter bag chamber B.

# Silo "Bag Type" Vent



**STEPHENS FILTER VENTS** provide highly effective dust control for cement, flyash, and other granular materials.

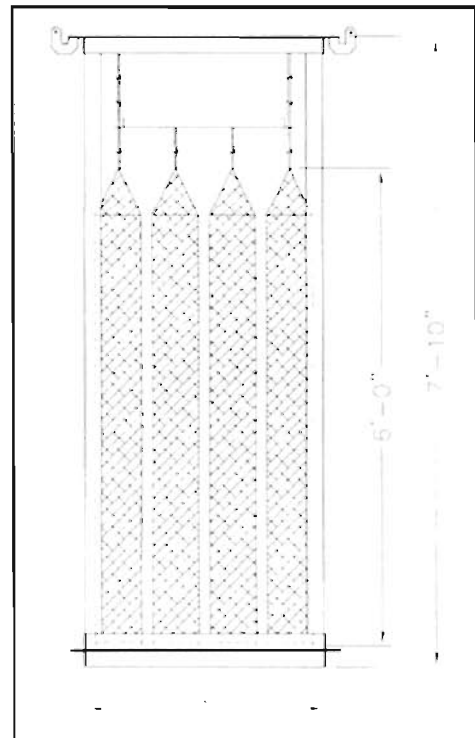
**DUO-DENSITY FILTER BAGS** of Polyester / Dacron fibers trap 99.6%\* of moving dust particles, allowing the release of clean air into the atmosphere. Valuable materials are then recycled for reuse.

Vent housing is of a high quality steel and the full length access door allows for easy maintenance and service of bags.

**BLOWERS** are available for all units. CALL 1-800-626-0200 for complete information.

## FILTER BAG SPECIFICATIONS:

Fiber ..... Polyester / Dacron  
 Construction ..... Felt, Duo-Density  
 Air Permeability ..... 30-40 CFM Sq. Ft.  
 Temp. Range ..... 220<sup>o</sup>-440<sup>o</sup> F  
 \*Recovery ..... 99.6% to one Micron size



Model No.	No. Of Bags	Bag Size	Cloth Area	Approx. Wt.	Dim 'A'
SV-170	16	7" Dia x 72"	170 Sq. Ft.	750 Lbs.	36"
SV-265	25	7" Dia x 72"	265 Sq. Ft.	875 Lbs.	44"
SV-380	36	7" Dia x 72"	380 Sq. Ft.	1,000 Lbs.	54"

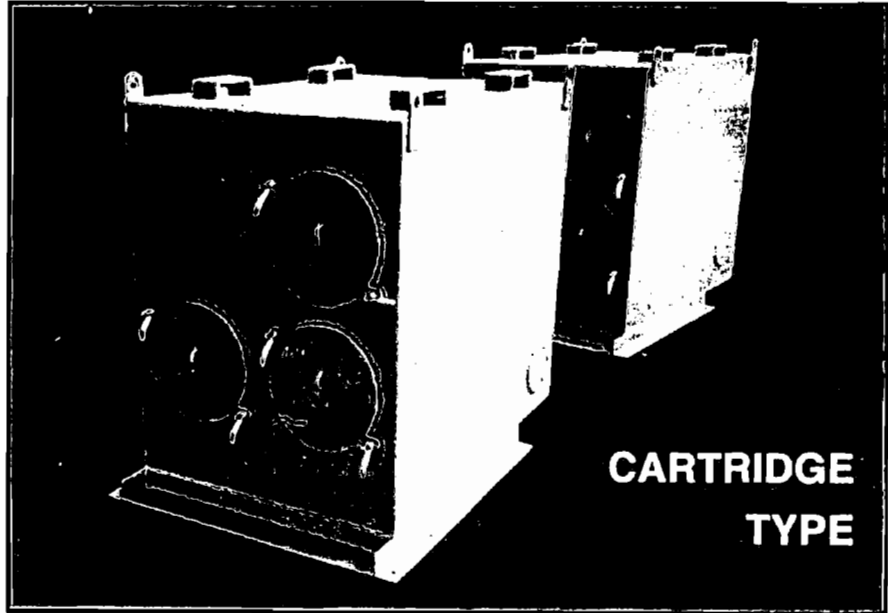
**STEPHENS Filter Vents** can meet all local, state and federal air pollution regulations.

NOTE: WE RESERVE THE RIGHT TO AMEND STANDARD SPECIFICATIONS WITHOUT NOTICE.

## Silo "Cartridge" Vent

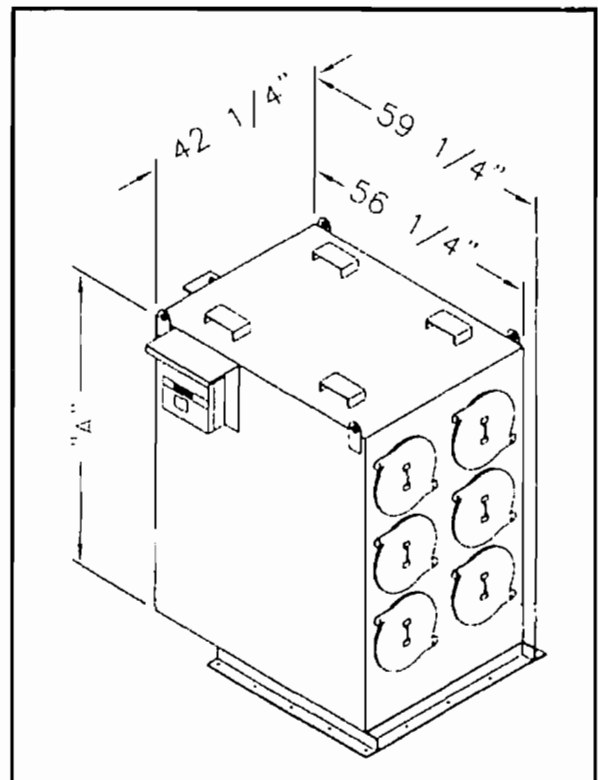
### FEATURES:

- Easy to replace cartridges, no tools required and no confined space. Cartridges replace from outside vent.
- Cartridges cleaned semi automatically by pulse reverse air for continuous cleaning.
- All parts and cartridges are kept in stock.



### CARTRIDGE SPECIFICATIONS:

Fiber..... 100% Polyester  
 Construction ..... Non-Woven, Pleated  
 Temp. Range ..... 200 Degrees  
 Recovery..... 99.95% to 1 micron and above

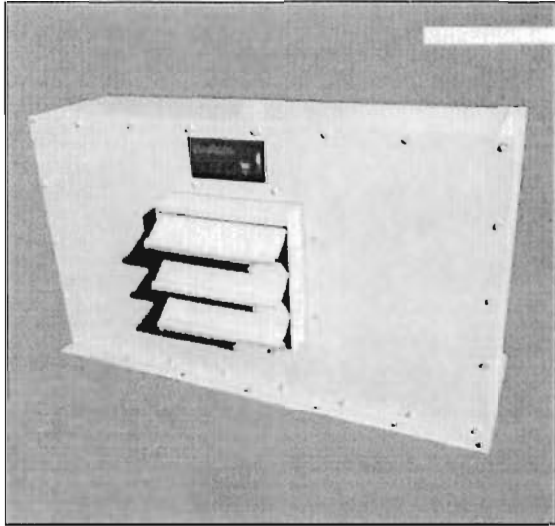


Model No.	No. of Cartridges	Cloth Area	Dim 'A'
SOS-680	2	300 Sq. Ft.	2'10"
SOS-1020	3	450 Sq. Ft.	4'4"
SOS-1360	4	600 Sq. Ft.	4'4"
*SOS-680 X 2	4	600 Sq. Ft.	4'4"
*SOS-1020 X 2	6	900 Sq. Ft.	5'0"

\*For Two Compartment Silos

# BATCHER VENTS

STEPHENS Weigh Batcher Filter Vents are an efficient means of collecting dust particles and preventing them from being discharged into the atmosphere during the batching process. Particles accumulated are recycled and discharged back into the weigh batcher.

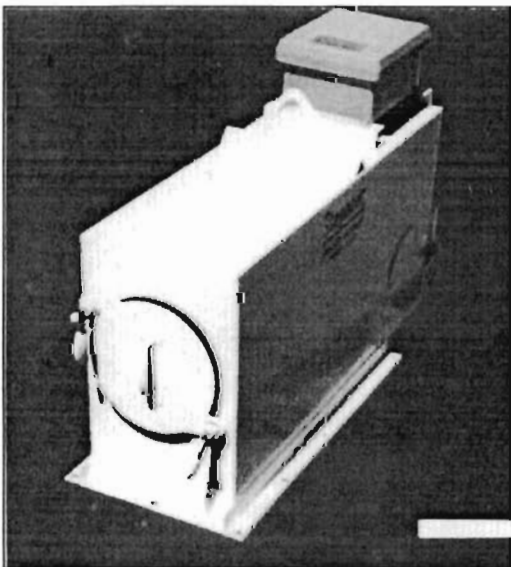
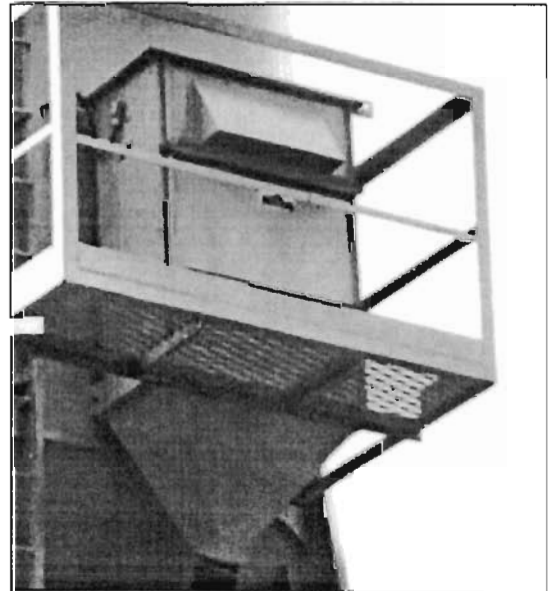


**SV-20 BATCHER VENT** mounts on top of Cement Batcher. The filtration process occurs when displaced air is forced through bags and clean air is pulled through the bags when the batcher discharges.

(Dimensions are: 22-3/4" H. 37" L. 9-1/2" W. The unit weighs approximately 115 lbs.)

VENT	HEIGHT	WIDTH	LENGTH
SV-45	79"	21"	39"
SV-65	79"	30"	39"

The **SV-45 and SV-65 Filter Vents** mount on the side of the silo with flexible 6" diameter hose connecting the vent to the Cement Batcher. The bags are cleaned by a 1/3 HP single phase motor that is activated when the batcher gate opens.



**SOS-80** (Cartridge type) weigh batcher filter vent. vent mounted on top of Cement Batcher. Contains one replaceable cartridge that is cleaned by pulse air. No tools required to replace cartridge. cartridge replacement is quick and easy.

(Dimensions: 19-5/8" H x 36-1/2" L x 12-1/4" W).



# DURA-STRESS UNDERGROUND, Inc.

P.O. Box 350729 • Grand Island, FL 32735-0729

**RECEIVED**

**SEP 15 2011**

**DIVISION OF AIR  
RESOURCE MANAGEMENT**

September 12, 2011

Department of Environmental Protection  
Receipts  
Post Office 3070  
Tallahassee, FL 32315-3070

Re: Dura-Stress Underground, Inc.  
Air General Permit Re-Registration Form  
Facility ID No. PC16

Dear Mr. Dibble:

Please find enclosed the signed Air General Permit Registration Form No. 62-210.920(2)(b) for our Concrete Batch Plant. We are also enclosing a check in the amount of \$100.

If there are any questions, please contact Scott Edwards at (321) 720-7491.

Sincerely,

Scott Edwards, President  
Dura-Stress Underground, Inc.

Enclosure

**Subject:** Dura-Stress Underground Air General Permit Registration  
**From:** "Chuck Spitzner" <CSPITZNER@jonesedmunds.com>  
**Date:** Fri, 9 Sep 2011 16:14:30 -0400  
**To:** <chris@dsuprecast.com>  
**CC:** "John Horvath" <JHORVATH@jonesedmunds.com>

Chris,

I spoke with Dick Dibble at FDEP in Tallahassee. He said to send the registration packet (cover letter, form, and \$100 check) to the following address:

Department of Environmental Protection  
Receipts  
Post Office Box 3070  
Tallahassee, Florida 32315-3070

The check should be made out to "Florida Department of Environmental Protection."

You should include your Facility ID number on the cover letter.

If you have any questions, you can email them to me and I'll pick them up remotely next week and get back to you as soon as I can. My cell phone number is 352 328-9796 but I may not be reachable on that very much.

Good luck,

Chuck

Charles E. Spitzner, Jr.  
Jones Edmunds & Associates, Inc.  
Gainesville, FL 32641  
(352) 377-5821  
(352) 377-3166 (FAX)  
[cspitzner@jonesedmunds.com](mailto:cspitzner@jonesedmunds.com)

*The information contained in this message and any file and/or attachment transmitted herewith are confidential and may be legally privileged. It is meant solely for the private use of the intended addressee and must not be disclosed to or used by anyone other than the intended addressee. If you receive this transmission by error, please immediately notify the sender by reply email and destroy the original transmission and its attachments. E-mail transmission cannot be guaranteed to be secure or error free as information could be intercepted, corrupted, lost, destroyed, arrive late or incomplete. The sender therefore does not accept liability for any errors or omissions in the content of this message, which arise as a result of e-mail transmission. If verification is required please request a hard-copy version. Although this e-mail is believed to be free of any virus or other defect that might affect any computer system in which it is received, it is the responsibility of the recipient to ensure that it is virus free.*



## Dibble, Dickson

---

**Subject:** Processed AIRS ID# 0694850-002, DURASTRESS UNDERGROUND INC dba  
DURASTRESS UNDERGROUND INC, 11043 CR 44E, LEESBURG, FL 34788-2699

**Location:** CONCRETE BATCHING PLANT-Leesburg

**Start:** Thu 9/22/2011 12:00 AM  
**End:** Fri 9/23/2011 12:00 AM  
**Show Time As:** Free

**Recurrence:** (none)

**Organizer:** Dibble, Dickson

**Categories:** EFFECTIVE

### PENDING

09/22/11, 1105 HRS-Called for Scott Edwards, 321.720.7491 & left VM message, need make and model for each of the three (3) dust collector control equipment.

09/22/11, 1120 hrs-Mr. Edwards returned my call

09/22/11, 1345 hrs-called Mr. Edwards and he is on road and suggested that I call Mr. Tony Allen at the plant to retrieve the information needed

09/22/11, 1400 hrs-called the plant and they will e-mail me the information that I have requested.

### COMPLETED

09/22/11, 1430 hrs-received e-mail with correct info, see below



Filter type and  
Manufacturer



**DURA-STRESS  
UNDERGROUND, Inc.**

P.O. Box 350729  
Grand Island, FL 32735-0729



Department of Environmental Protection  
Receipts  
Post Office 3070  
Tallahassee, FL 32315-3070

323153070

