

**CONCRETE BATCHING PLANT  
AIR GENERAL PERMIT REGISTRATION FORM**

509836 JUN 24 2010

RECEIVED  
JUN 28 2010  
Judeau, M. H. (M. H. Judeau)  
& Mobile Services

**Part II. Notification to Permitting Office**  
(Detach and submit to appropriate permitting office; keep copy onsite)

**Instructions:** To give notice to the Department of an eligible facility's intent to use this air general permit, the owner or operator of the facility must detach and complete this part of the Air General Permit Registration Form and submit it to the appropriate Department of Environmental Protection or local air pollution control program office which has permitting authority. Please type or print clearly all information, and enclose the appropriate air general permit registration processing fee pursuant to Rule 62-4.050, F.A.C. (\$100 as of the effective date of this form)

**04/0001-004**

**Registration Type**

Check one:

**INITIAL REGISTRATION** - Notification of intent to:

- Construct and operate a proposed new facility.
- Operate an existing facility not currently using an air general permit (e.g., a facility proposing to go from an air operation permit to an air general permit).

**RE-REGISTRATION** (for facilities currently using an air general permit) - Notification of intent to:

- Continue operating the facility after expiration of the current term of air general permit use.
- Continue operating the facility after a change of ownership.
- Make an equipment change requiring re-registration pursuant to Rule 62-210.310(2)(e), F.A.C., or any other change not considered an administrative correction under Rule 62-210.310(2)(d), F.A.C.

**Surrender of Existing Air Operation Permit(s) - For Initial Registrations Only**

If the facility currently holds one or more air operation permits, such permit(s) must be surrendered by the owner or operator upon the effective date of this air general permit. In such case, check the first box, and indicate the operation permits being surrendered. If no air operation permits are held by the facility, check the second box.

- All existing air operation permits for this facility are hereby surrendered upon the effective date of this air general permit; specifically permit number(s): \_\_\_\_\_
- No air operation permits currently exist for this facility.

**General Facility Information**

**Facility Owner/Company Name** (Name of corporation, agency, or individual owner who or which owns, leases, operates, controls, or supervises the facility.)

**Bell Concrete Products, Incorporated**

**Site Name** (Name, if any, of the facility site; e.g., Plant A, Metropolis Plant, etc. If more than one facility is owned, a registration form must be completed for each.)

**Bell Concrete Batch Plant and Concrete Block Plant**

**Facility Location** (Provide the physical location of the facility, not necessarily the mailing address.)

Street Address: **2480 N. US 129**

City: **Bell**

County: **Gilchrist**

Zip Code: **32619**

**Facility Start-Up Date** (Estimated start-up date of proposed new facility.)(N/A for existing facility)

**N/A, existing facility**

**Owner/Authorized Representative**

Name and Position Title (Person who, by signing this form below, certifies that the facility is eligible to use this air general permit.)

Print Name and Title: **Chad A. Smith, President**

Owner/Authorized Representative Mailing Address

Organization/Firm: **Bell Concrete Products, Incorporated**

Street Address: **P.O. Box 7**

City: **Bell**

County: **Gilchrist**

Zip Code: **32619**

Owner/Authorized Representative Telephone Numbers

Telephone: **352-463-6103**

Fax: **352-463-7807**

Cell phone (optional):

**Facility Contact (If different from Owner/Authorized Representative)**

Name and Position Title (Plant manager or person to be contacted regarding day-to-day operations at the facility.)

Print Name and Title: **Chad A. Smith, President**

Facility Contact Mailing Address

Organization/Firm: **Bell Concrete Products, Incorporated**

Street Address: **P.O. Box 7**

City: **Bell**

County: **Gilchrist**

Zip Code: **32619**

Facility Contact Telephone Numbers

Telephone: **352-463-6103**

Fax: **352-463-7807**


Cell phone (optional):

**Owner/Authorized Representative Statement**

This statement must be signed and dated by the person named above as owner or authorized representative

*I, the undersigned, am the owner or authorized representative of the owner or operator of the facility addressed in this Air General Permit Registration Form. I hereby certify, based on information and belief formed after reasonable inquiry, that the facility addressed in this registration form is eligible for use of this air general permit and that the statements made in this registration form are true, accurate and complete. Further, I agree to operate and maintain the facility described in this registration form so as to comply with all applicable standards for control of air pollutant emissions found in the statutes of the State of Florida and rules of the Department of Environmental Protection and revisions thereof.*

*I will promptly notify the Department of any changes to the information contained in this registration form.*

  
Signature

6-21-10  
Date

**Type of Facility**

Check one:

Stationary Facility

Relocatable Facility

**Type(s) of Reasonable Precautions Used to Prevent Unconfined Emissions**

Check all precautions to be used for the management of roads, parking areas, stock piles and yards:

Pave Roads

Pave Parking Areas

Pave Yards

Maintain Roads/Parking/Yards

Use Water Application

Use Dust Suppressant

Remove Particulate Matter

Reduce Stock Pile Height

Install Wind Breaks

Check all precautions to be used for the management of drop points to trucks:

Spray Bar

Chute

Enclosure

Partial enclosure

**Description of Reasonable Precautions**

Below, or as an attachment to this form, provide details of all types of reasonable precautions to be used to prevent unconfined emissions at the facility.

Three main procedures are used to prevent unconfined particulate matter emissions as indicated above. Water is applied from a ready-mix truck on an as-needed basis, typically once per week. Stock pile heights are kept as low as practicable through inventory management and physically spreading materials with a front-end loader. Roads are maintained as necessary, typically weekly, to ensure roads and parking areas are in good condition. A spray bar is used at the drop point to ready-mix trucks, to spray the area during batching.

**Description of Facility**

Below, or as an attachment to this form, provide a description of the concrete batching plant operations at the facility in sufficient detail to demonstrate the facility's eligibility for use of this air general permit and to provide a basis for tracking any future equipment or process changes at the facility. Describe all air pollutant-emitting processes and equipment at the facility, and identify any air pollution control measures or equipment used.

**Plant 1: Ready Mix**

- 2 cement (or cement replacement/supplement) silos: 600-barrel capacity each
  - Each silo equipped with fabric filter dust collector (baghouse)
- Batching rate approximately 100 cubic yards per hour
  - Water spray bar at loading point to truck
- Typical hours of operation 5 am to 5 pm daily

**Plant 2: Block**

- 1 cement (or cement replacement/supplement) silo: 450-barrel capacity each
  - Silo equipped with fabric filter dust collector (baghouse)
- Batching rate approximately 10 cubic yards per hour
  - Enclosed mixer with chute
- Typical hours of operation 5 am to 5 pm daily

**Plant 3: Block**

- 1 cement (or cement replacement/supplement) silo: 600-barrel capacity each
  - Silo equipped with fabric filter dust collector (cartridge-style baghouse)
- Batching rate approximately 12 cubic yards per hour
  - Enclosed mixer with chute
- Typical hours of operation 5 am to 5 pm daily

NEED SPECIFIC  
DETAIL  
1) BAGHOUSES - MFR,  
MODEL # FILTER AREA,  
APPLICATION TO  
2) CLARIFICATION OF  
THE TERM (OR CEMENT  
REPLACEMENT/SUPPLEMENT)  
SILOS  
3) SILOS - NUMBER  
OF IDENTIFIERS

\* SEE ATTACHED ADDENDUM (PAGE 10)  
TO THIS REGISTRATION FORM PLUS  
ATTACHMENTS

*\* ADDENDUM TO # 0410001-004  
PAGE 10 PLUS ATTACHMENTS*

**Description of Facility**

Below, or as an attachment to this form, provide a description of the concrete batching plant operations at the facility in sufficient detail to demonstrate the facility's eligibility for use of this air general permit and to provide a basis for tracking any future equipment or process changes at the facility. Describe all air pollutant-emitting processes and equipment at the facility, and identify any air pollution control measures or equipment used.

**Plant 1: Ready Mix**

2 cement (or cement replacement/supplement) silos: 600-barrel capacity each

- Each silo equipped with fabric filter dust collector (baghouse)
- McNeilus Silo Filter Vent SFV 170 with 170 ft<sup>2</sup> filter area

Batching rate approximately 100 cubic yards per hour

- Water spray bar at loading point to truck

Typical hours of operation 5 am to 5 pm daily

**Plant 2: Block**

1 cement (or cement replacement/supplement) silo: 450-barrel capacity each

- Silo equipped with fabric filter dust collector (baghouse)
- McNeilus Silo Filter Vent SFV 170 with 170 ft<sup>2</sup> filter area

Batching rate approximately 10 cubic yards per hour

- Enclosed mixer with chute

Typical hours of operation 5 am to 5 pm daily

**Plant 3: Block**

1 cement (or cement replacement/supplement) silo: 600-barrel capacity each

- Silo equipped with fabric filter dust collector (cartridge-style baghouse)
- C&W Silo Collector CP-305-839 with 356 ft<sup>2</sup> of filter area

Batching rate approximately 12 cubic yards per hour

- Enclosed mixer with chute
- C&W Silo Collector CP-100 with 356 ft<sup>2</sup> of filter area and 350 acfm fan

Typical hours of operation 5 am to 5 pm daily

*AO*  
*7/6/2010*

# Silo Filter Vents



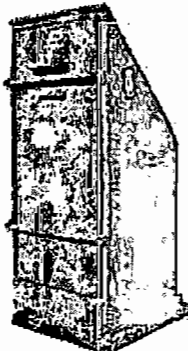
## Silo Filter Vent Specification

### Model SFV 170

Bag Area	170 Sq. Ft.
Number of Bags	16
Bag Diameter	7"
Bag Length	72"
Bag Material	9.5 Oz. Spun Polyester
Material Weave	Sateen
Air Permeability	18-25 CFM/Sq. Ft.
Cleaning Mechanism	Electric Or Mechanical Shaker
Flow Rate	650 CFM
Air/Cloth Ratio	3.83
Outlet Size	6" X 8"
Outlet Velocity	1950 FV/Min.

### Model SFV 270

Bag Area	270 Sq. Ft.
Number of Bags	36
Bag Diameter	4-7/8"
Bag Length	72"
Bag Material	9.5 Oz. Spun Polyester
Material Weave	Sateen
Air Permeability	18-25 CFM/Sq. Ft.
Cleaning Mechanism	Electric Or Mechanical Shaker
Flow Rate	650 CFM
Air/Cloth Ratio	2.40
Outlet Size	6" X 8"
Outlet Velocity	1950 FV/Min.



## Batch Filter Vent Specifications

### Model BFV 15

Bag Area	15 Sq. Ft.
Number of Bags	4
Bag Diameter	7"
Bag Length	24"
Bag Material	9.5 Oz. Spun Polyester
Material Weave	Sateen
Air Permeability	18-25 CFM/Sq. Ft.
Cleaning Mechanism	Electric Mechanical Shaker
Flow Rate	64 CFM
Air/Cloth Ratio	4.4
Outlet Size	6" X 8"
Outlet Velocity	198 FV/Min.

### Silo Filter Vent

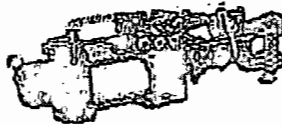
SFV170 Air	740.40170
SFV170 Electric	740.40170EL
SFV270 Air	740.140210
SFV270 Electric	740.140210EL

### Batch Filter Vent

BFV15	740.140340
-------	------------

### Dust Collector Bags

SFV170 (11 bag Batch)	740.115018
SFV170 (20 bag Batch)	740.115018
SFV270	740.145815
MS1000	740.145816
MS1500	740.145816
RA1000	740.145817
RA1500	740.145818
RA975	740.145819
RA1450	740.145819



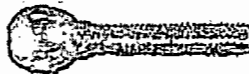
Shaker Cylinder  
SFV 170 & 270 740.145825  
MS1000 and MS1500



Air Valve - Filter Vent  
Shaker  
740.145831



J-Bolt Dust Collector Bag  
020.100620



Filter Vent Door Hinge  
740.100615



Dust Collector Bag Hanger  
020.115017

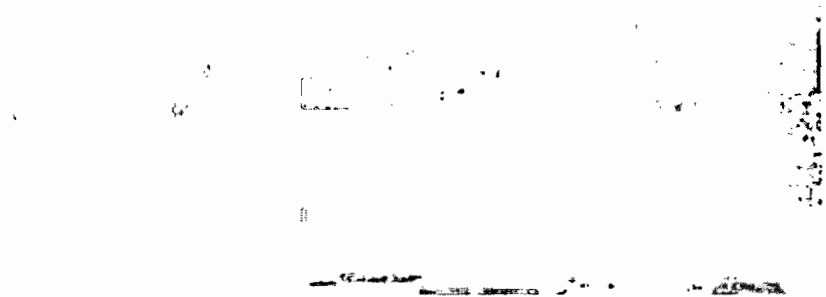
Specifications for CP Silo Collectors at						
Model Number	CP-230-639	CP-305-839	CP-310-478	CP-380-1039	CP-450-678	CP-610-878
Number of Cartridges	6	8	4	10	6	8
Cartridge Diameter and Length	6"x39"	6"x39"	8"x78"	6"x39"	8"x78"	8"x78"
Number of Solenoids	2	2	2	2	2	2
Total Filtration Area	267	356	356	445	535	713
Min. Design Efficiency	99.99%	99.99%	99.99%	99.99%	99.99%	99.99%
Air to Cloth Ratio (ACFM/Ft.2)	3.2	4.5	4.5	4.5	4.7	4.2
Filtration Velocity (Ft./Min.)	3.2	4.5	4.5	4.5	4.7	4.2
Blower Horsepower (optional)	2	5	5	5	7.5	7.5
Static Pressure Drop (WC)	8"	8"	8"	8"	8"	8"
Normal Air Capacity	850	1600	1600	2000	2500	3000
*Outlet Area (Ft. 2)	0.2	.92	.92	.9	1	1.2
*Outlet Velocity (Ft./Sec.)	55	20	29	38	39	42.8
**Outlet Area (Ft. 2)	.24	.24	.24	.24	.24	.24
**Outlet Velocity (Ft./Sec.)	.59	111	111	139	174	208
Cleaning Mechanism	Adjustable Pulse Jet w/ Timer	Adjustable Pulse Jet w/ Timer	Adjustable Pulse Jet w/ Timer	Adjustable Pulse Jet w/ Timer	Adjustable Pulse Jet w/ Timer	Adjustable Pulse Jet w/ Timer
Your State Environmental Dept. may request additional information. If so, please contact C & W Engineering						
* WITH BLOWER **WITHOUT BLOWER						
The Fabric Material is 100% Spun Bound Polyester.						
The material is approximately 8.0 oz.						

Specifications for CP Silo Collectors at 8" Static Pressure					
Model Number	CP-760-1078	CP-900-1278	CP-1220-1878	CP-1520-2078	CP-2250-3078
Number of Cartridges	10	12	16	20	30
Cartridge Diameter and Length	8"x78"	8"x78"	8"x78"	8"x78"	8"x78"
Number of Solenoids	2	3	4	4	5
Total Filtration Area	891	1069	1426	1782	2673
Min. Design Efficiency	99.99%	99.99%	99.99%	99.99%	99.99%
Air to Cloth Ratio (ACFM/Ft.2)	4.5	4.7	4.7	4.7	4.6
Filtration Velocity (Ft./Min.)	4.5	4.7	4.7	4.7	4.6
Blower Horsepower (optional)	10	15	15	20	25
Static Pressure Drop (WC)	8"	8"	8"	8"	8"
Normal Air Capacity	4,000	5,000	6,700	8,400	12,400
*Outlet Area (Ft. 2)	1.33	1.5	2.29	2.85	3.45
*Outlet Velocity (Ft./Sec.)	50.2	56	48.3	49	59.6
Cleaning Mechanism	Pulse Jet Nozzle w/ Adjustable Timer	Pulse Jet Nozzle w/ Adjustable Timer	Pulse Jet Nozzle w/ Adjustable Timer	Pulse Jet Nozzle w/ Adjustable Timer	Pulse Jet Nozzle w/ Adjustable Timer
Your State Environmental Dept. may request additional information. If so, please contact C & W Engineering					
* WITH BLOWER					

SPECIFICATIONS

Questions? Call 1-800-880-3878 for C & W Customer Support

## Cartridge Pulse (CP) Silo Collector



C&W's traditional Cartridge Pulse Silo Collector features Pulse-Jet technology, 99.99% filtration efficiency, and tool-less media exchange. Numerous models of this unit offer varying degrees of filtration, ranging from a Scale Collector with 36 ft. of filtration area to a CP-2250 with 2,673 ft. of filtration area.

C&W Manufacturing proudly offers the *highest quality cartridges* on the market today. For an in-depth comparison of our cartridges compared to our competitors.

for an In-de

### Features:

- Easy to Maintain
  - Tool-less Exchange of Filter Media
  - Top Entry for Clean Side Filter Exchange
- Efficiency
  - 99.99% Filtration Efficiency\*
- Efficient, Compact
  - Vertical, Wide-Pleat Cartridges
- Performance
  - Inlet Air Regulator and Moisture Separator
  - Test Ports for Monitoring Filter Media
- Reliable, Easy to Operate
  - Solid State Adjustable Timers w/ LED Display
- Long-Lasting, Durable
  - 12 Gauge, Heavy Duty Steel Construction



### Options:

- Pressure Switch for Automatic Cleaning
- Mini-helic Gauge
- Custom Designs and Sizes
- Special Mounting Flange for Adapting to Existing Flange
- Blower Packages, Standard or Custom-Built
- Special Filter Media
- Silo Anti-Overfill System
- Pressure Relief Valves and Bin Indicators

### Applications:

- |          |            |          |         |
|----------|------------|----------|---------|
| • Cement | • Fly Ash  | • Gypsum | • Slate |
| • Chalk  | • Glass    | • Paint  | • Soap  |
| • Clay   | • Gold Ore | • Sands  | • Talc  |



- Coal
- Coke

- Grain

- Salt

- Wood

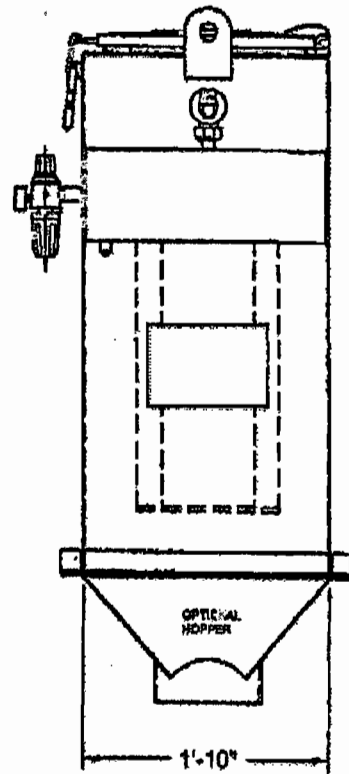
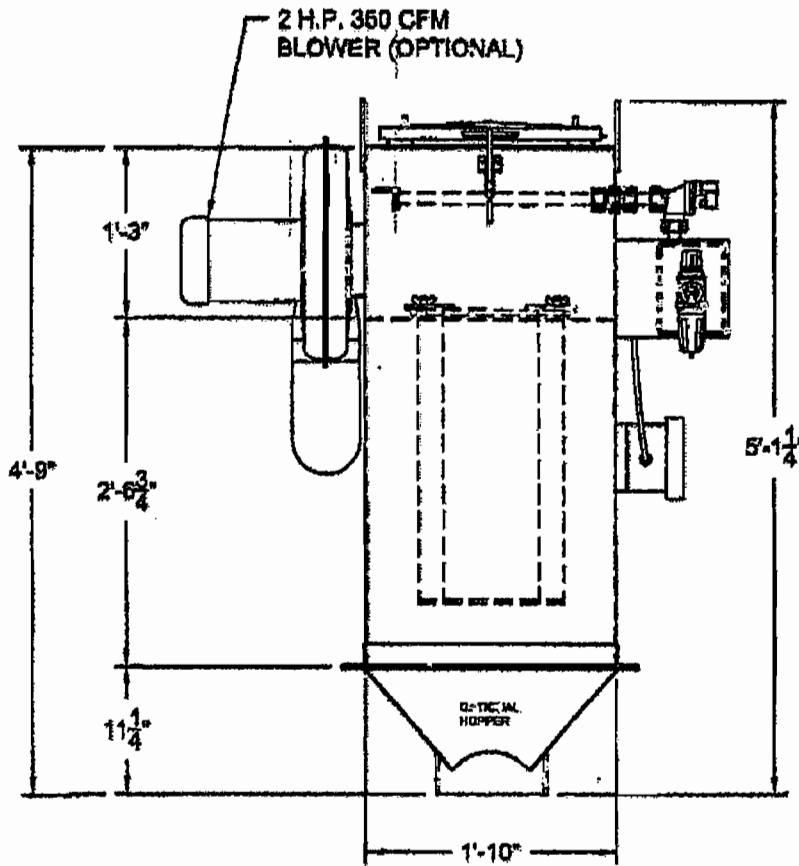
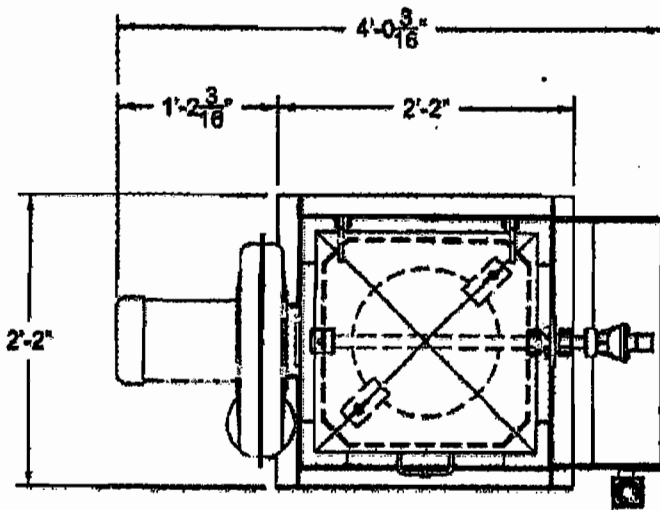
**Specifications:**

Specifications	CFM-36	CFM-72	CFM-100	CFM-267	CFM-356	CFM-535
Total Filtration Area (sq. ft.)	36	72	100	267	356	535
Number of Cartridges	2	4	1	6	8	12
Cartridge Size	8"x19"	8"x19"	12"x27"	8"x39"	8"x39"	8"x39"
Overall Height	2' 4"	2' 4"	4' 5"	5' 4"	5' 2"	5' 10"
Flange Width	2' 0"	2' 0"	1' 10"	3' 6"	4' 8"	4' 8"
Flange Length	1' 0"	2' 0"	1' 10"	2' 4"	2' 4"	3' 6"
Approx. Weight (lbs.)	165	300	450	610	975	1,025
Compressed Air Req.	3	4	4	5	6	6
CFM Recommended	216	432	400	850	1,600	2,500
Min. Design Efficiency*	99.99%	99.99%	99.99%	99.99%	99.99%	99.99%
Cleaning Mechanism	Pulse Jet	Pulse Jet	Pulse Jet	Pulse Jet	Pulse Jet	Pulse Jet

\*At Standard Test Conditions

ACAD/DRAWNEWEST/IGACP-100

NOTE: THIS PRINT NOT FOR  
CONSTRUCTION, FOR  
GENERAL REF. ONLY



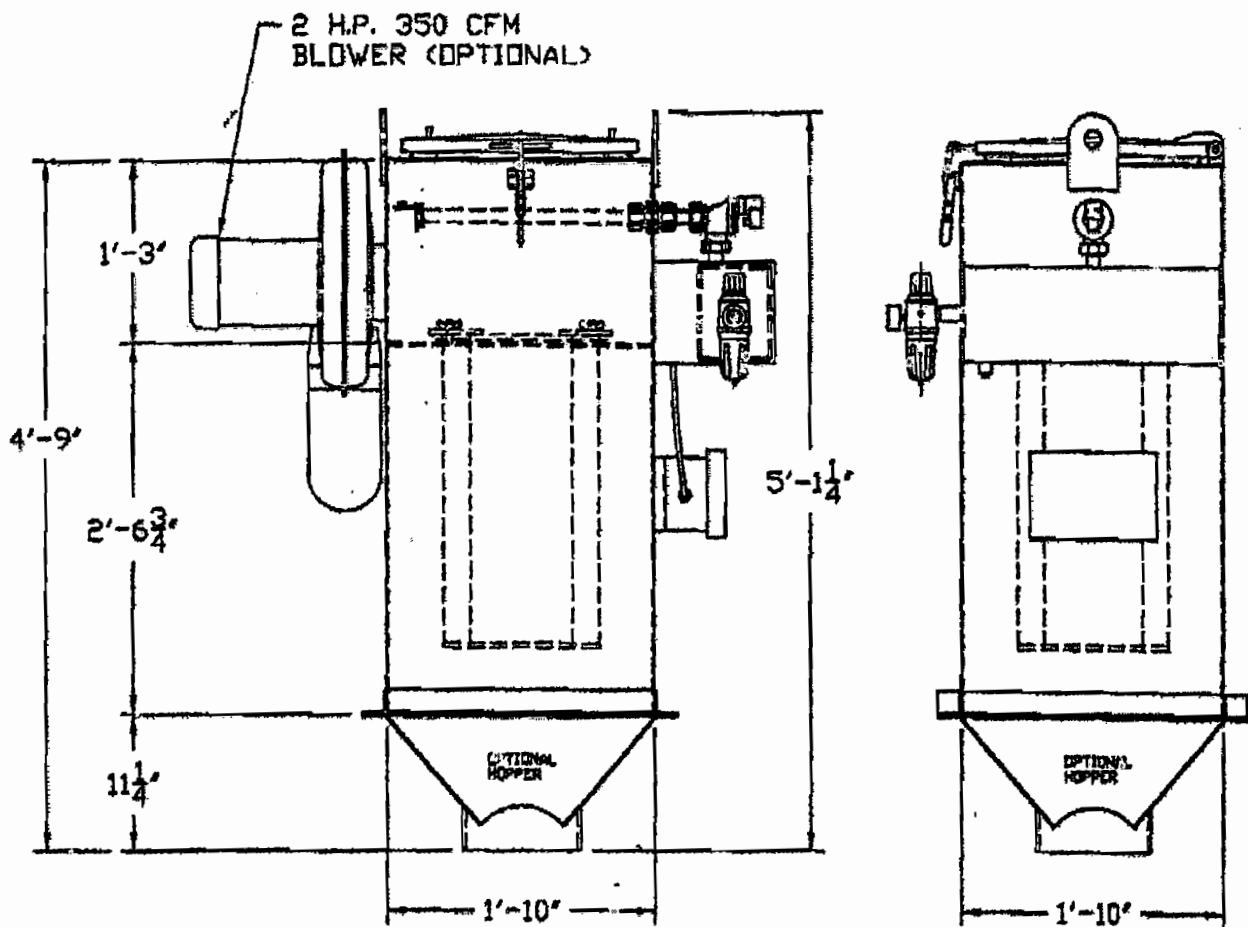
### CP-100 CARTRIDGE PULSE JET COLLECTOR



C & W MFG. & SALES CO.  
6933 SHELMOR RD.  
ALVARADO, TX. 76009

(817) 790-5000

ITEM	QTY.	DESCRIPTION	P/N
1	1	3/4" SOLENOID	SO008
2	1	4-POLE TIMER BOARD	ET039
3	1	AIR FILTER/REGULATOR	AL004
4	1	12 3/4"ØX27" FILTER CARTRIDGE	CD002
5	1	3/4" SCREW-IN CLEANING NOZZLE	SO028



CP-100 SILT COLLECTOR  
PARTS LIST



C & W MFG. & SALES CO.  
16933 SHELMOR RD.  
ALVARADO, TX 76009 (817)790-5000

## Dibble, Dickson

---

**From:** Steve Cullen [scullen@kooglerassociates.com]  
**Sent:** Tuesday, July 06, 2010 12:24 PM  
**To:** Dibble, Dickson  
**Cc:** Jack Smith  
**Subject:** Bell Concrete, Bell Facility, Gilchrist County, AG Renewal: Supplemental Information.  
**Attachments:** supplement 7 6 2010.pdf

Dear Dick,

Attached please find a revised Page 10 of the referenced AG notification, and specification sheets for the dust collectors. I trust that this information is responsive to your request.

Please let me know if you have any further questions.

Regards,

Steven C. Cullen, PE  
Koogler & Associates, Inc.

Consultant to Bell Concrete Products, Incorporated



4014 NW 13th STREET  
GAINESVILLE, FL 32609-1923  
352/377-5822 ■ FAX/377-7158

June 18, 2010

Via USPS to:  
FDEP Receipts  
Post Office Box 3070  
Tallahassee, Florida 32315-3070

or Via Overnight parcel to:  
FDEP  
3800 Commonwealth Boulevard, MS-77  
Tallahassee, Florida 32399

**Subject:** Bell Concrete Products, Incorporated  
Concrete Batching Plant Air General Permit Registration Form (Renewal)  
ARMS No. 0410001

Bell Concrete Products, Incorporated is the owner and operator of an eligible facility comprising concrete batching plants. The owner or operator is notifying the Department of the facility's intent to continue to use this general permit by submitting the applicable registration form and the \$100.00 processing fee.

Please contact me at (352) 377-5822 if you have any questions about this notification.

Sincerely,

Steven C. Cullen, PE  
Koogler & Associates, Inc.

Consultant to Bell Concrete Products, Incorporated

Copy to Chad Smith - Bell Concrete Products, Incorporated

## Dibble, Dickson

---

**Subject:** Processed AIRS ID# 0410001-004, BELL CONCRETE PRODUCTS INC dba BELL  
CONCRETE RM & BLOCK PLANTS, 2480 N US 129, BELL, FL 32619

**Location:** CONCRETE BATCHING PLANT-Bell

**Start:** Wed 6/30/2010 12:00 AM  
**End:** Thu 7/1/2010 12:00 AM  
**Show Time As:** Free

**Recurrence:** (none)

**Categories:** PENDING

### PENDING

06/30/10-0825 hrs called & left VM message, Steven C. Cullen, Koogler & Assoc. (352) 377-5822 x19. Need the following:

PAGE 10 DESCRIPTION OF FACILITY – Specific Detail

- 1) Baghouses – manufacturer, model #'s, filter area ea., application to which unit
- 2) Clarification of the terminology (or cement replacement/supplement) silos
- 3) Silos – number of at each silo at each plant, identify by capacity (bbbls or cu yd), location, number, or product stored

Bell Concrete Produ  
P.O. Box 7  
Bell, FL 32619

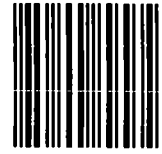


7008 1140 0001 1868 0427



UNITED STATES  
POSTAL SERVICE

0000



32315

U.S. POSTAGE  
PAID  
BELL, FL  
32619  
JUN 23, 10  
AMOUNT

\$6.15  
00069919-05

RETURN RECEIPT  
REQUESTED

Florida Dept. of Environmental Protection

FDEP Receipts

P O Box 3070

Tallahassee, Fl 32315-3070