

RECEIVED

RECIPROCATING INTERNAL COMBUSTION ENGINES
AIR GENERAL PERMIT REGISTRATION FORM

APR 30 2009

Part II. Notification to Permitting Office

Bureau of Air Monitoring
& Mobile Sources

(Detach and submit to appropriate permitting office; keep copy onsite)

Instructions: To give notice to the Department of an eligible facility's intent to use this air general permit, the owner or operator of the facility must detach and complete this part of the Air General Permit Registration Form and submit it to the appropriate Department of Environmental Protection or local air pollution control program office which has permitting authority. Please type or print clearly all information, and enclose the appropriate air general permit registration processing fee pursuant to Rule 62-4.050, F.A.C. (\$100 as of the effective date of this form)

0010122-002

Registration Type

Check one:

INITIAL REGISTRATION - Notification of intent to:

- Construct and operate a proposed new facility.
- Operate an existing facility not currently using an air general permit (e.g., a facility proposing to go from an air operation permit to an air general permit).

RE-REGISTRATION (for facilities currently using an air general permit) - Notification of intent to:

- Continue operating the facility after expiration of the current term of air general permit use.
- Continue operating the facility after a change of ownership.
- Make an equipment change requiring re-registration pursuant to Rule 62-210.310(2)(e), F.A.C., or any other change not considered an administrative correction under Rule 62-210.310(2)(d), F.A.C.

Surrender of Existing Air Operation Permit(s) - For Initial Registrations Only

If the facility currently holds one or more air operation permits, such permit(s) must be surrendered by the owner or operator upon the effective date of this air general permit. In such case, check the first box, and indicate the operation permits being surrendered. If no air operation permits are held by the facility, check the second box.

- All existing air operation permits for this facility are hereby surrendered upon the effective date of this air general permit; specifically permit number(s): _____
- No air operation permits currently exist for this facility.

General Facility Information

Facility Owner/Company Name (Name of corporation, agency, or individual owner who or which owns, leases, operates, controls, or supervises the facility.)

Alltel Communications, LLC

Site Name (Name, if any, of the facility site; e.g., Plant A, Metropolis Plant, etc. If more than one facility is owned, a registration form must be completed for each.)

Alltel - Gainesville Administrative Office and MTSO

Facility Location (Provide the physical location of the facility, not necessarily the mailing address.)

Street Address: 7525 Northwest 4th Blvd

City: Gainesville

County: Alachua

Zip Code: 32608

Facility Start-Up Date (Estimated start-up date of proposed new facility.) (N/A for existing facility)

N/A

Owner/Authorized Representative

Name and Position Title (Person who, by signing this form below, certifies that the facility is eligible to use this air general permit.)

Print Name and Title: Robin Haeffner, Director - Environmental Affairs

Owner/Authorized Representative Mailing Address

Organization/Firm: Alltel Communications, LLC

Street Address: One Allied Drive, B5F10E

City: Little Rock

County: Pulaski

Zip Code: 72202

Owner/Authorized Representative Telephone Numbers

Telephone: 501-905-5377

Fax: 501-905-5095

Cell phone (optional):

Facility Contact (If different from Owner/Authorized Representative)

Name and Position Title (Plant manager or person to be contacted regarding day-to-day operations at the facility.)

Print Name and Title: Kathy Boyd, Manager – Network Operations

Facility Contact Mailing Address

Organization/Firm: Alltel Communications, LLC

Street Address: 7525 Northwest 4th Blvd

City: Gainesville

County: Alachua

Zip Code: 32607

Facility Contact Telephone Numbers

Telephone: 352-333-8883

Fax: 352-333-8720

Cell phone (optional):

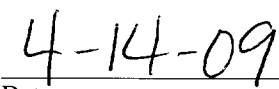
Owner/Authorized Representative Statement

This statement must be signed and dated by the person named above as owner or authorized representative

I, the undersigned, am the owner or authorized representative of the owner or operator of the facility addressed in this Air General Permit Registration Form. I hereby certify, based on information and belief formed after reasonable inquiry, that the facility addressed in this registration form is eligible for use of this air general permit and that the statements made in this registration form are true, accurate and complete. Further, I agree to operate and maintain the facility described in this registration form so as to comply with all applicable standards for control of air pollutant emissions found in the statutes of the State of Florida and rules of the Department of Environmental Protection and revisions thereof.

I will promptly notify the Department of any changes to the information contained in this registration form.


Signature


Date

Fuel Consumption

If this is an **initial registration** for reciprocating internal combustion engine operations, provide an estimate of the total amount of fuel expected to be consumed over a 12-month period. Note: the general permit limits fuel consumption by all reciprocating internal combustion engines at the facility to 20,000 gallons per year of gasoline, 250,000 gallons per year of diesel fuel, 1.15 million gallons per year of propane, 40 million standard cubic feet per year of natural gas, or an equivalent prorated amount if multiple fuels are used

If this is a **re-registration** for reciprocating internal combustion engine operations, provide the highest 12-month total fuel consumption amount, in appropriate units, for the last five years. Indicate the 12-month period over which this fuel consumption occurred.

Highest level for 12-month fuel consumption: September 2005 – 735 gallons of Diesel Fuel

12-month period over which this fuel consumption occurred: March 2005 – March 2006

(See attached spread sheet)

Description of Facility

Below, or as an attachment to this form, provide a description of the reciprocating internal combustion engine operations at the facility in sufficient detail to demonstrate the facility's eligibility for use of this air general permit and to provide a basis for tracking any future equipment or process changes at the facility. Describe all air pollutant-emitting processes and equipment at the facility, and identify any air pollution control measures or equipment used.

1. This is the re-registration for the 800 kW Cummins, Diesel Fueled back up generator for the Administration and Telecommunications Switch located at this site.

- The generator is used exclusively for the backup power in the event of commercial power loss. The unit is not used for peak shaving or cogeneration.
- The generator utilizes diesel fuel (<0.05% or less)
- No modifications or changes to the engine have been performed since the initial registration.
- The unit was initially installed 08/01/1992. The unit is not subject to 40 CFR Subpart ZZZ and is considered an "existing source", nor does NSPS Subpart JJJJ apply.

2. This facility also is a "staging area" for the storage of a total of 9 (nine) small portable (30-50 kW) portable generators that are used for Hurricane Preparedness. These units are not always present on-site.

Appendix A

Fuel Consumption and Run Time Records

RECEIVED

APR 27 2009

NORTHEAST DISTRICT
DEP-JACKSONVILLE

**Monthly
Operating
Log For Fuel-
Burning
Equipment**

Total Run Time

Month	Hour Meter	Total Hours	Fuel Consumed (Gallons) Low Sulfur <0.05% Sulfur Content	Gallons Consumed	Additional Notes:
May 2004	409	2.5	142		
June 2004	415	6.0	341		
July 2004	419	4.0	227		
August 2004	423	4.0	227		
September 2004	432	9.0	511		
October 2004	435	3.0	170		
November 2004	439	4.0	227		
December 2004	441	2.0	114	1960	Year ending 2004 -
January 2005	445	4.0	227		
February 2005	449	4.0	227		
March 2005	453	4.0	227		
April 2005	462	9.0	511		
May 2005	466	4.0	227		
June 2005	469	3.0	170		
July 2005	473	4.0	227		
August 2005	483	10.0	568	19	
September 2005	496	13.0	738	19	
October 2005	502	6.0	341	19	
November 2005	510	8.0	454	19	
December 2005	516	6.0	341	19	4260 Year ending 2005 -
January 2006	526	10.0	568	19	
February 2006	532	6.0	341	19	
March 2006	543	11.0	625	19	
April 2006	549	6.0	341	19	
May 2006	556	7.0	398	19	
June 2006	562	6.0	341	19	
July 2006	569	7.0	398	19	5454
August 2006	573	4.0	227		
September 2006	576	3.0	170		
October 2006	581	5.0	284		
November 2006	584	3.0	170		
December 2006	587	3.0	170	4033	Year ending 2006 -
January 2007	592	5.0	284		
February 2007	596	4.0	227		
March 2007	603	7.0	398		
April 2007	607	4.0	227		
May 2007	613	6.0	341		
June 2007	619	6.0	341		
July 2007	625	6.0	341		
August 2007	629	4.0	227		
September 2007	632	3.0	170		
October 2007	636	4.0	227		
November 2007	640	4.0	227		
December 2007	642	2.0	114	3124	Year ending 2007
January 2008	644	2.0	114		
February 2008	646	2.0	114		
March 2008	649	3.0	170		
April 2008	652	3.0	170		
May 2008	654	2.0	114		
June 2008	656	2.0	114		
July 2008	658	2.0	114		
August 2008	662	4.0	227		
September 2008	667	5.0	284		
October 2008	675	8.0	454		10/23 - PM and Gen load test with no
November 2008	678	3.0	170		
December 2008	684	6.0	341	2386	12/18 - PM and Gen load test with hot load ground fault and schedule repair. Year ending 2008
January 2009	688	4.0	227		

February	2009	694	6.0	341	02/23 - Scheduled repair from 12/18 with new load with another pm.
----------	------	-----	-----	-----	--

Alltel Communications, LLC - Gainesville MTSO - 800 kW

Rolling 12-Month Fuel Consumption and Operating Hours

Total Run Time

		Generator #1	
12-Month Period		Rolling 12-Month Fuel Usage (gallons)	Rolling 12-Month Operating Hours
May-04	- Apr-05	263	4.6
Jun-04	- May-05	270	4.8
Jul-04	- Jun-05	256	4.5
Aug-04	- Jul-05	256	4.5
Sep-04	- Aug-05	284	5.0
Oct-04	- Sep-05	303	5.3
Nov-04	- Oct-05	317	5.6
Dec-04	- Nov-05	336	5.9
Jan-05	- Dec-05	355	6.3
Feb-05	- Jan-06	383	6.8
Mar-05	- Feb-06	393	6.9
Apr-05	- Mar-06	426	7.5
May-05	- Apr-06	412	7.3
Jun-05	- May-06	426	7.5
Jul-05	- Jun-06	440	7.8
Aug-05	- Jul-06	454	8.0
Sep-05	- Aug-06	426	7.5
Oct-05	- Sep-06	379	6.7
Nov-05	- Oct-06	374	6.6
Dec-05	- Nov-06	350	6.2
Jan-06	- Dec-06	336	5.9
Feb-06	- Jan-07	312	5.5
Mar-06	- Feb-07	303	5.3
Apr-06	- Mar-07	284	5.0
May-06	- Apr-07	275	4.8
Jun-06	- May-07	270	4.8
Jul-06	- Jun-07	270	4.8
Aug-06	- Jul-07	265	4.7
Sep-06	- Aug-07	265	4.7
Oct-06	- Sep-07	265	4.7
Nov-06	- Oct-07	260	4.6
Dec-06	- Nov-07	265	4.7
Jan-07	- Dec-07	260	4.6
Feb-07	- Jan-08	246	4.3
Mar-07	- Feb-08	237	4.2
Apr-07	- Mar-08	218	3.8
May-07	- Apr-08	213	3.8
Jun-07	- May-08	194	3.4
Jul-07	- Jun-08	175	3.1
Aug-07	- Jul-08	156	2.8
Sep-07	- Aug-08	156	2.8
Oct-07	- Sep-08	166	2.9
Nov-07	- Oct-08	185	3.3
Dec-07	- Nov-08	180	3.2
Jan-08	- Dec-08	199	3.5
Feb-08	- Jan-09	208	3.7
Mar-08	- Feb-09	227	4.0
Apr-08	- Mar-09	237	4.2

Appendix B

NESHAP Evaluation for Reciprocating Internal Combustion Engines (RICE)

40 CFR 63 Subpart ZZZZ

RECEIVED
APR 27 2009
NORTHEAST DISTRICT
DEP-JACKSONVILLE

Table 1. MACT Applicability Determination –

Location: Alltel - Gainesville, FL MTSO
800 kW Emergency Generator
7525 N. W. 4th Blvd.
Gainesville, FL 32608
Lat/Long: 29-39-44.000/ 82-25-44.000

Engine ID	Engine Description		Site-Rated Horsepower (hp) ^a	Existing/New/Reconstructed (Select one) ^b	Subcategory ^c
	Manufacturer	Model			
5436 (EnSite)	Caterpillar	3412SR-4	1072	Existing <input checked="" type="checkbox"/> New__ Reconstructed__ (Install date: 08/01/1992)	Existing Emergency RICE
				Existing__ New__ Reconstructed__	
				Existing__ New__ Reconstructed__	
				Existing__ New__ Reconstructed__	
				Existing__ New__ Reconstructed__	

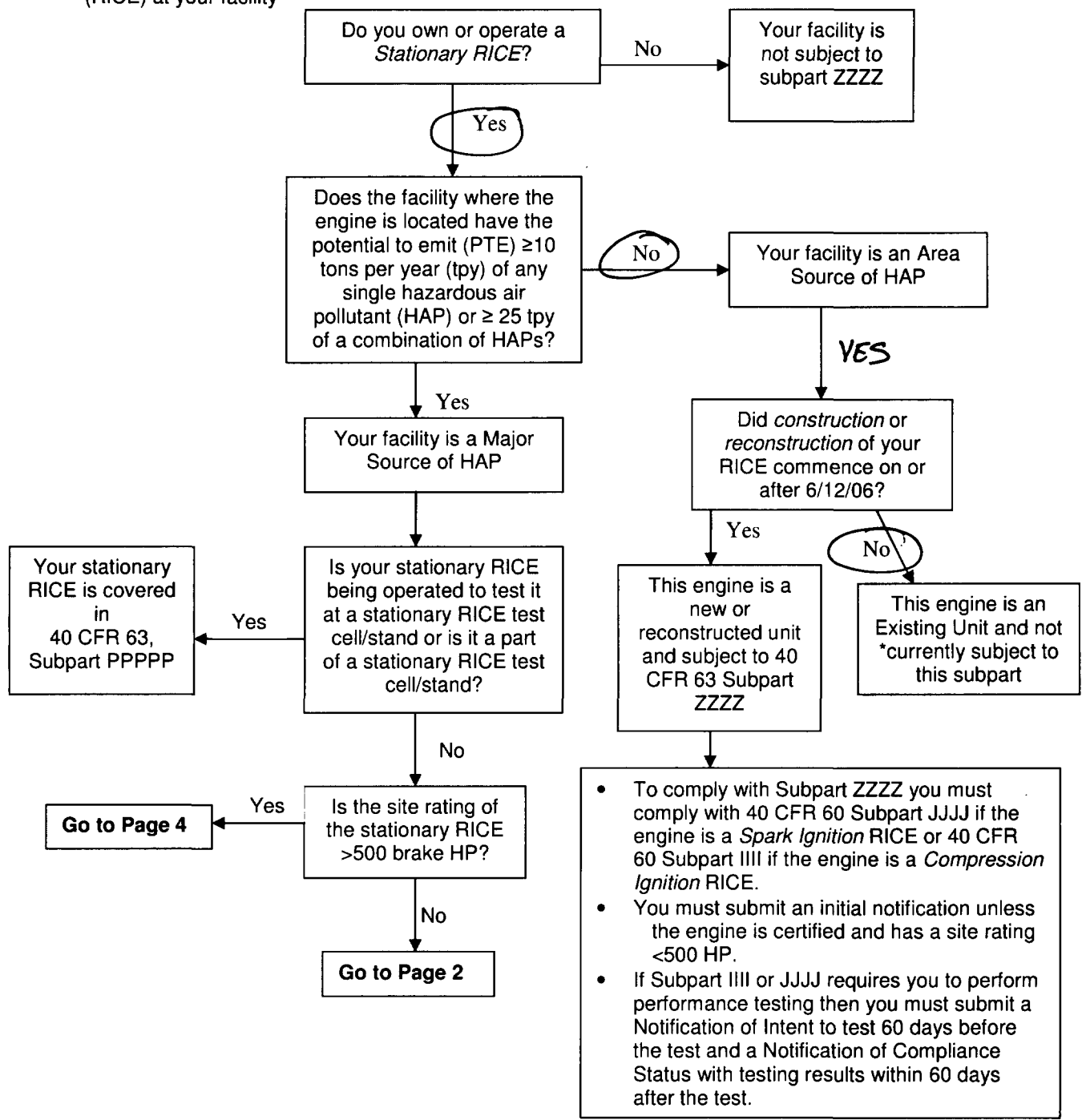
***(hp)^a** - Used kW to hp (horsepower) conversion factor of 1.34

*This is an “Existing Emergency RICE” engine.

*The date installation is 08/01/1992, there for this unit is not subject to 40 CFR Subpart IIII, see applicability flowchart.

Applicability Flowchart for National Emission Standards for Hazardous Air Pollutants (NESHAP) for Reciprocating Internal Combustion Engines (RICE) 40 CFR 63 Subpart ZZZZ

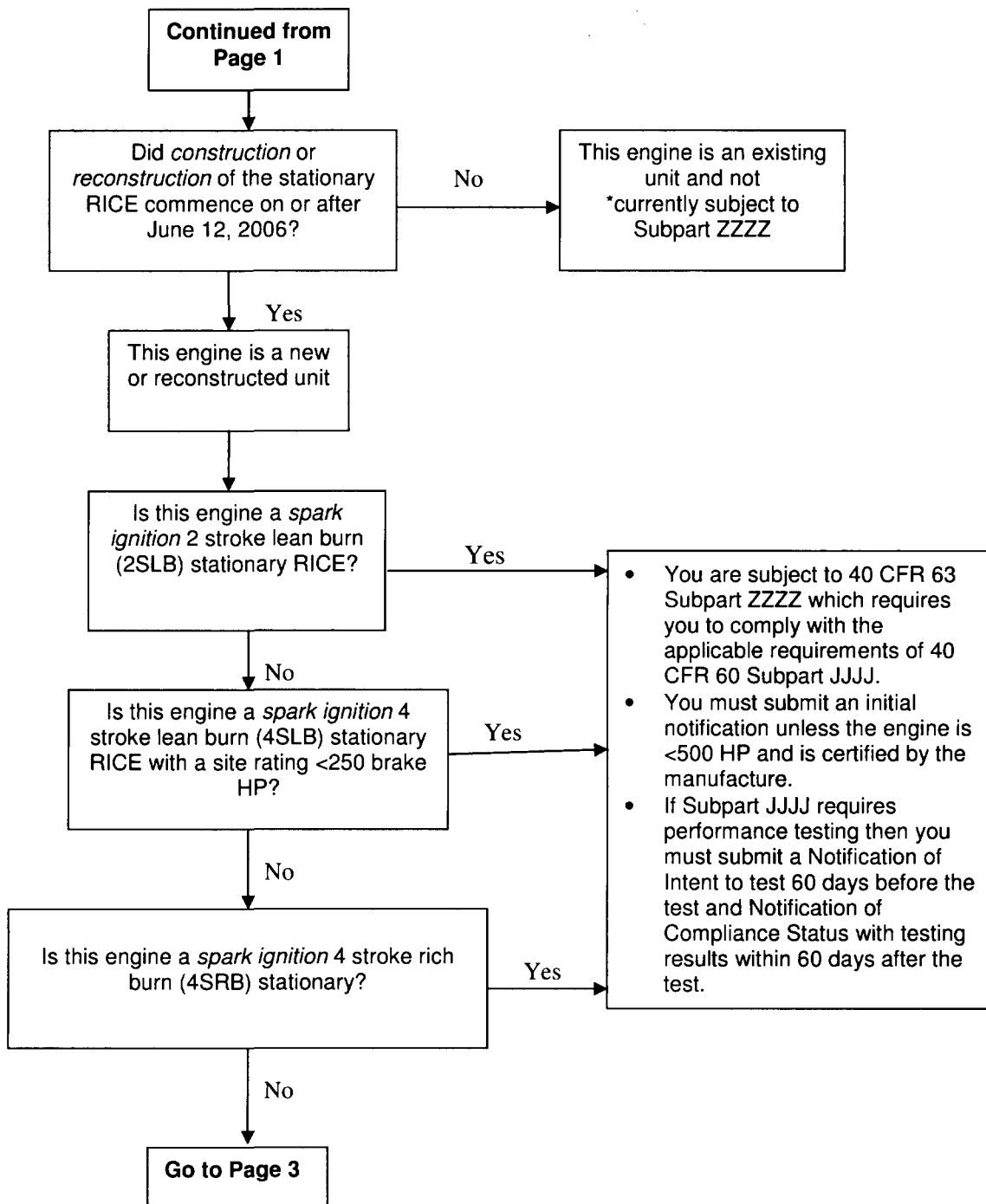
Directions: Follow this flowchart for each stationary reciprocating internal combustion engine (RICE) at your facility



*Requirements for existing engines, in 40 CFR 63 Subpart ZZZZ, will likely be proposed in 2009

**Italicized words are defined on page 7

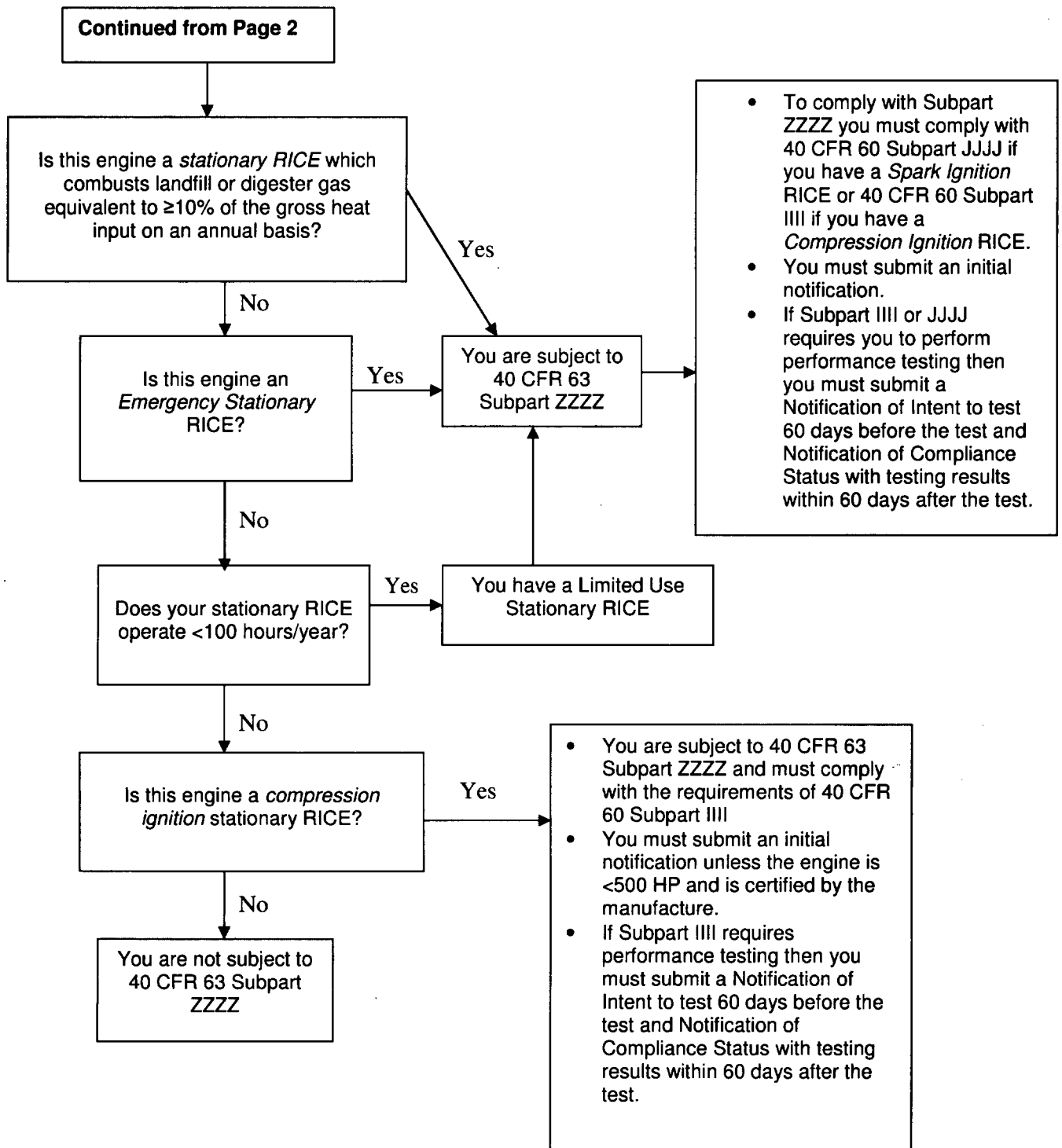
Flowchart for New or Reconstructed RICE, with a Site Rating \leq 500 Brake HP, at a Major HAP Source



*Requirements for existing engines, in 40 CFR 63 Subpart ZZZZ, will likely be proposed in 2009

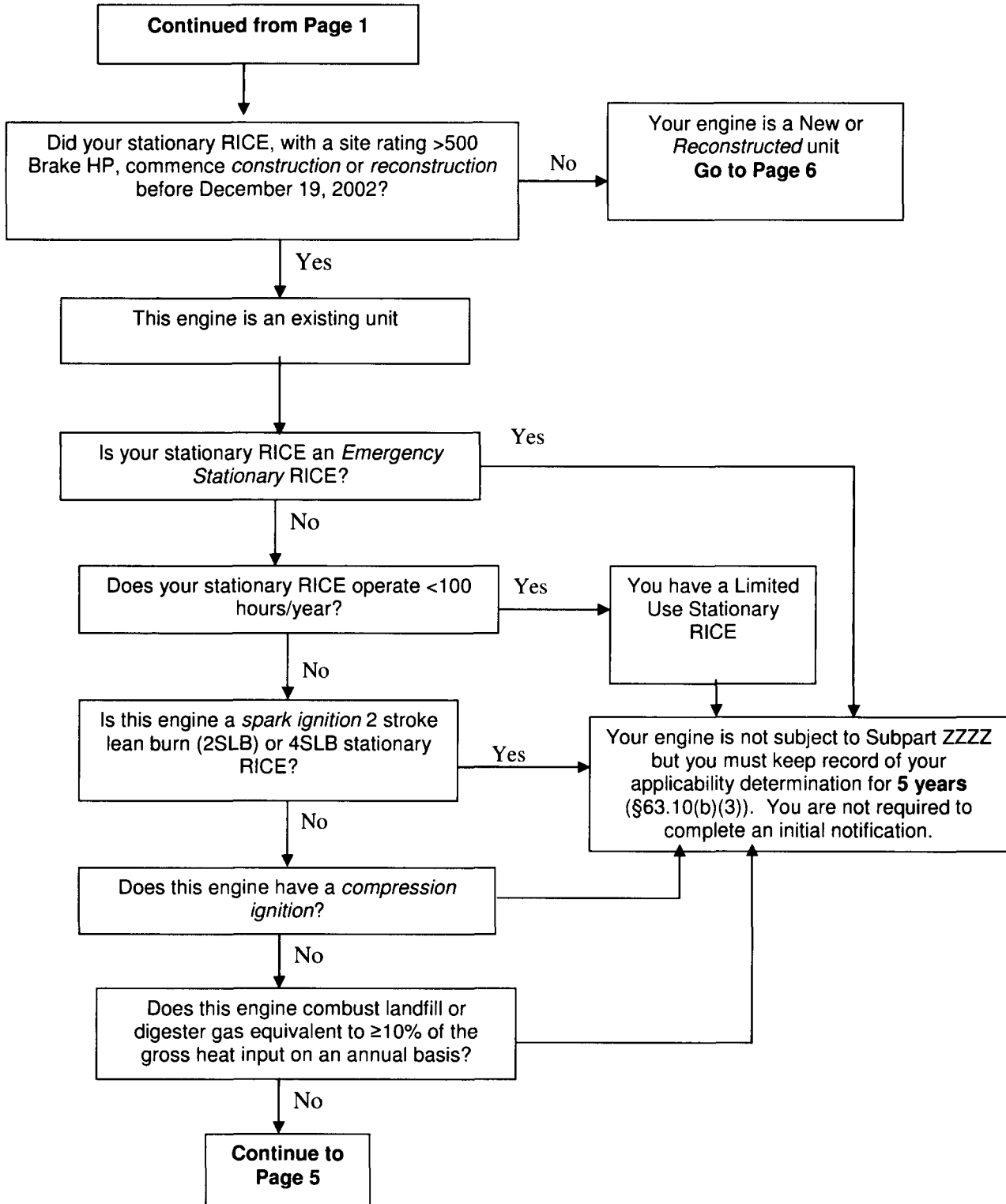
****Italicized words are defined on page 7**

Flowchart for New or Reconstructed RICE, with a Site Rating ≤ 500 Brake HP, at a Major HAP Source



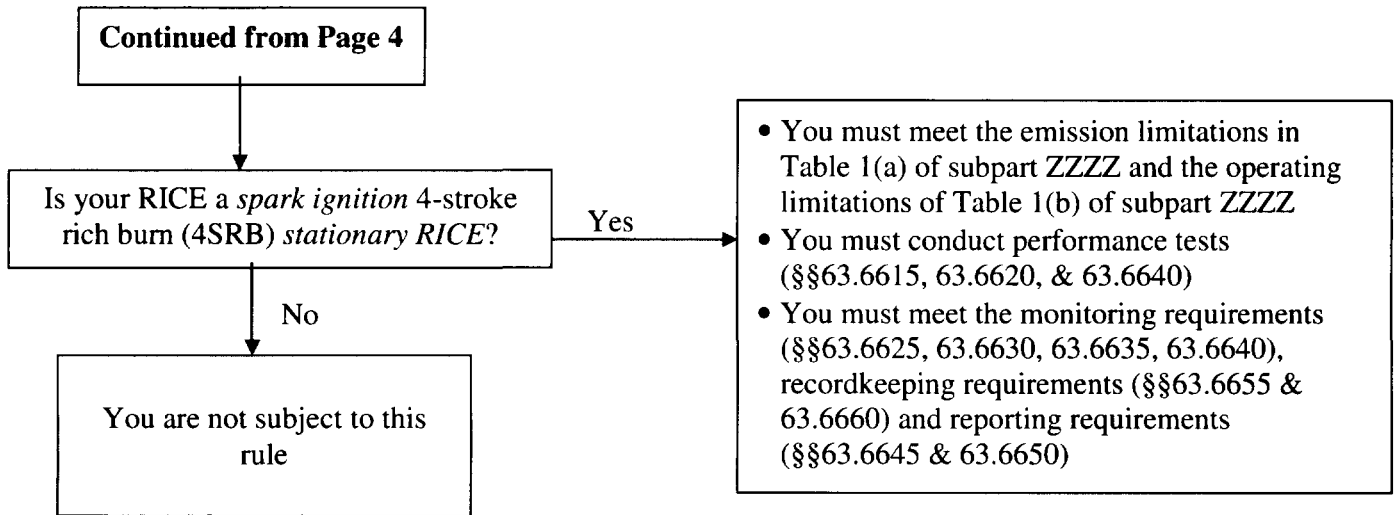
****Italicized words are defined on page 7**

Flowchart for Existing RICE, with a Site Rating >500 Brake HP



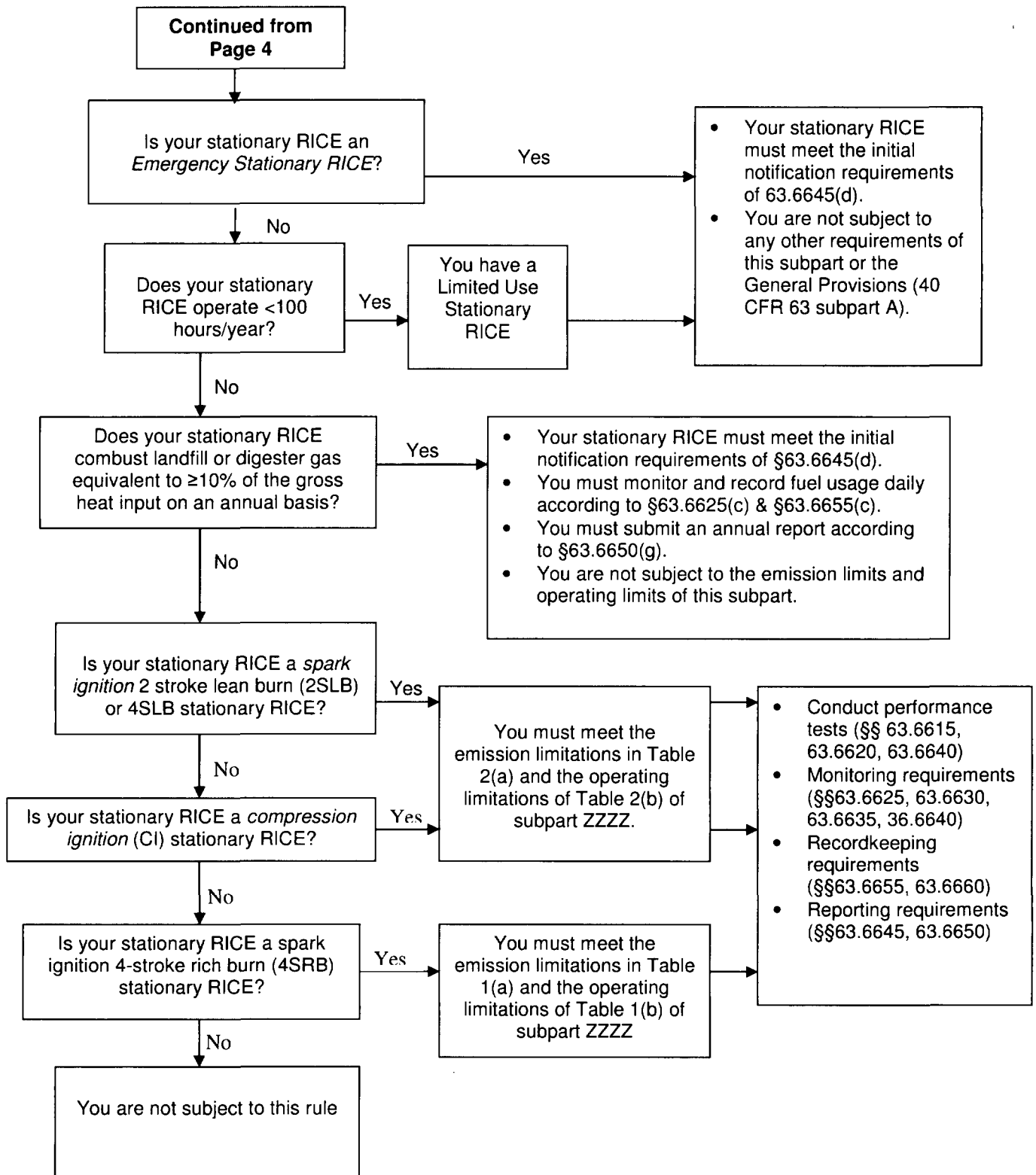
****Italicized words are defined on page 7**

Flowchart for Existing RICE, with a Site Rating >500 Brake HP



****Italicized words are defined on page 7**

Flowchart for New or Reconstructed RICE, with a Site Rating >500 Brake HP, at a Major HAP Source



****Italicized words are defined on page 7**

Definitions

Compression ignition means relating to a type of stationary internal combustion engine that is not a spark ignition engine.

Construction means the on-site fabrication, erection, or installation of an affected source. Construction does not include the removal of all equipment comprising an affected source from an existing location and reinstallation of such equipment at a new location. The owner or operator of an existing affected source that is relocated may elect not to reinstall minor ancillary equipment including, but not limited to, piping, ductwork, and valves. However, removal and reinstallation of an affected source will be construed as reconstruction if it satisfies the criteria for reconstruction as defined in this section. The costs of replacing minor ancillary equipment must be considered in determining whether the existing affected source is reconstructed.

Emergency Stationary RICE means any stationary RICE whose operation is limited to emergency situations and required testing and maintenance. Examples include stationary RICE used to produce power for critical networks or equipment (including power supplied to portions of a facility) when electric power from the local utility (or the normal power source, if the facility runs on its own power production) is interrupted, or stationary RICE used to pump water in the case of fire or flood, etc. Stationary RICE used for peak shaving are not considered emergency stationary RICE. Stationary ICE used to supply power to an electric grid or that supply power as part of a financial arrangement with another entity are not considered to be emergency engines. Emergency stationary RICE with a site-rating of more than 500 brake HP located at a major source of HAP emissions that were installed prior to June 12, 2006, may be operated for the purpose of maintenance checks and readiness testing, provided that the tests are recommended by the manufacturer, the vendor, or the insurance company associated with the engine. Required testing of such units should be minimized, but there is no time limit on the use of emergency stationary RICE in emergency situations and for routine testing and maintenance. Emergency stationary RICE with a site-rating of more than 500 brake HP located at a major source of HAP emissions that were installed prior to June 12, 2006, may also operate an additional 50 hours per year in non-emergency situations. Emergency stationary RICE with a site-rating of more than 500 brake HP located at a major source of HAP emissions that were installed on or after June 12, 2006, must comply with requirements specified in 40 CFR 60.4243(d).

Reconstruction, unless otherwise defined in a relevant standard, means the replacement of components of an affected or a previously nonaffected source to such an extent that:

- (1) The fixed capital cost of the new components exceeds 50 percent of the fixed capital cost that would be required to construct a comparable new source; and
- (2) It is technologically and economically feasible for the reconstructed source to meet the relevant standard(s) established by the Administrator (or a State) pursuant to section 112 of the Act. Upon reconstruction, an affected source, or a stationary source that becomes an affected source, is subject to relevant standards for new sources, including compliance dates, irrespective of any change in emissions of hazardous air pollutants from that source.

Spark ignition means relating to either: A gasoline-fueled engine; or any other type of engine a spark plug (or other sparking device) and with operating characteristics significantly similar to the theoretical Otto combustion cycle. Spark ignition engines usually use a throttle to regulate intake air flow to control power during normal operation. Dual-fuel engines in which a liquid fuel (typically diesel fuel) is used for CI and gaseous fuel (typically natural gas) is used as the primary fuel at an annual average ratio of less than 2 parts diesel fuel to 100 parts total fuel on an energy equivalent basis are spark ignition engines.

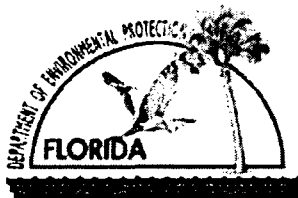
Stationary reciprocating internal combustion engine (RICE) means any reciprocating internal combustion engine which uses reciprocating motion to convert heat energy into mechanical work and which is not mobile. Stationary RICE differ from mobile RICE in that a stationary RICE is not a non-road engine as defined at 40 CFR 1068.30, and is not used to propel a motor vehicle or a vehicle used solely for competition.

Appendix C

Existing General Operate to Permit

ARMS No. 0010122

RECEIVED
APR 27 2009
NORTHEAST DISTRICT
DEP-JACKSONVILLE



Job Bush
Governor

Department of Environmental Protection

Northeast District
7825 Baymeadows Way, Suite B200
Jacksonville, Florida 32256-7590

Colleen Castille
Secretary

July 22, 2004

Robin Haeffner
Alltel Florida, Inc.
One Allied Drive
Little Rock, AK 72202

Alachua County – Air Permitting
Alltel Florida, Inc.
ARMS No.: 0010122

Dear Robin Haeffner:

This is to acknowledge that your notification of intent to use the authority of Rule 62-210.300(4)(b)2., F.A.C., for Facilities Compromising Heating Units and General Purpose Internal Combustion Engines, was received on **June 21, 2004**. We have assigned ARMS number 0010122 to this.

As you know, pursuant to Florida Statutes section 403.814, authority to operate under general permits commences thirty days after receipt of notification unless you have been notified by this office that your facility has not shown entitlement to operate pursuant to the rule provisions.

For your information, authority to operate pursuant to Rule 62-210.300(4)(b)2., F.A.C., expires after 5 years. Therefore, a new notification must be received no later than 5 years after the date your notice was received as indicated above. If your general permit rule conditions require testing, such testing must be completed within the timeframe specified in the rule.

All correspondence, including continued use notification, shall be submitted to the Northeast District Office at 7825 Baymeadows Way, Suite B-200, Jacksonville, Florida 32256-7590. Please refer to the ARMS Number in all future correspondence and inquiries.

Should you have any questions in this matter, please contact Christopher L. Scott at (904) 807-3243.

Sincerely,

A handwritten signature in black ink, appearing to read "Christopher L. Kirts".

Christopher L. Kirts, P.E.
District Air Program Administrator

Cc: John Gay, NED Compliance



May 28, 2004

Ms. Christian Kirts, Director of Air Quality
Florida Department of Environmental Protection – N.W. District
7825 Bay Meadows Way, Suite 200B
Jacksonville, Florida 32256-7560

RE: ALLTEL Clean Air Act Disclosure and Non-Title V Application

Dear Mr. Kirts,

ALLTEL Corporation is a communications company with facilities in the State of Florida, serving both wireline and wireless customers. During a scheduled equipment Inventory Verification and Assessment Process (IVAP), it was discovered that ALLTEL owns and operates one regulated 800 kW emergency generator located at the ALLTEL Administrative/MTSO facility, 7525 N.W. 4th Boulevard in Gainesville, Florida in Tampa, Florida. This generator requires registration as a Non-Title V source.

Emergency generators are categorically exempt under Florida Air Code 62-210, provided they do not exceed the established annual emission caps. Calculating the E.P.A. AP-42 air emissions factors using the Federal Guidelines of 500 hours of operation per year, the generator does exceed the Nitrogen Oxide(s) limits found in the generic unit exemption category. As requested by a Mr. Khalid Al-Hahydy, ALLTEL is submitting this written disclosure along with the attached Non-Title V permit application and \$750.00 application fee.

Additional information regarding the primary operation of this generator includes the following:

- The generator is used exclusively for backup emergency power in the event of a public power outage. It is not used for peak shaving or co-generation.
- Fuel suppliers are directed to supply the generator with low sulfur diesel fuel (0.5% sulfur content by weight) and provide ALLTEL with fuel certification.
- The emergency generator is not subject to the Federal Acid Rain Program.
- The generator undergoes maintenance test runs that last for approximately 4 hours each month.

If you have any questions or require additional information, please contact John Smith by phone at 501-905-1199, or by email at: John.Smith@alltel.com. I may also be contacted by phone at 501-905-5377.

Sincerely,

Robin Haeffner
ALLTEL Corporate Environmental Management

Attachment

cc: Scott Settelmyer
James T. Banks, Esq.
John J. Smith

HEATING UNITS AND GENERAL PURPOSE INTERNAL COMBUSTION ENGINES
AIR GENERAL PERMIT NOTIFICATION FORM

Part III. Notification of Intent to Use General Permit

(Submit this Part to the appropriate permitting office and keep copy of completed form onsite. Instructions follow.)

Instructions to Owner or Operator: To give notice to the Department of an eligible facility's intent to use the heating units and general purpose internal combustion engines air general permit, the owner or operator of the facility must detach and complete Part III of this Heating Units and General Purpose Internal Combustion Engines Air General Permit Notification Form and submit it to the appropriate Department of Environmental Protection district office or local air pollution control program office which has been delegated permitting authority. Please type or print clearly all information and enclose the appropriate general permit processing fee pursuant to Rule 62-4.050(4)(o), F.A.C. Please note, the form will not be considered complete unless it is accompanied by the processing fee. Also, please refer to the instructions for completing Part III of the notification form at the end of the form.

General Facility Information

Facility Owner/Company Name (Name of corporation, agency, or individual owner): ALLTEL Florida, Inc.
Site Name (For example, plant name or number): Gainesville Administrative Office and MTSO
Facility Location: Street Address: 7525 Northwest 4th Blvd. City: Gainesville County: Alachua Zip Code: 32608
Facility Start-Up Date: 1992

Notification Type

Check one: <input type="checkbox"/> NEW: Notification of proposed <i>new</i> heating units and general purpose internal combustion engines. <input checked="" type="checkbox"/> EXISTING: Notification of <i>existing</i> heating units and general purpose internal combustion engines. <input type="checkbox"/> RENEWAL: Notification for permit renewal of <i>existing</i> heating units and general purpose internal combustion engines.
--

Owner/Authorized Representative

Name and Title: Robin Haeffner, ALLTEL Environmental Staff Manager
Owner/Authorized Representative Mailing Address: Organization/Firm: ALLTEL Corporation Street Address: One Allied Drive, B406SC City: Little Rock, Arkansas County: Pulaski Zip Code: 72202
Owner/Authorized Representative Telephone Number: Telephone: (501)905 - 5377 Fax: (501) 905 - 5095

Facility Contact (If different from Owner/Authorized Representative)

Name and Title: Tracy Stamper			
Facility Contact Mailing Address: Organization/Firm: ALLTEL Florida, Inc. Street Address: 7525 N.W. 4th Blvd. City: Gainesville County: Alachua Zip Code: 32608			
Facility Contact Telephone Number: Telephone: (352) 317 - 0801 Fax: (352) 332 - 8754			

Facility Comments

Process Description:
Diesel Fueled Internal Combustion engine. (Emergency Generator). The size 800 kW, 1073(horsepower) of the engine exceeds the emission factors specified in section 62-210.300(3)(b)(1), based upon AP-42 Calculations.

Although, intitally exempted under the categorical exemptions originally, the P.T.E. based upon 500 hours exceeds the maximum allowed under the Generic Unit exemption.

Surrender of Existing Air Permit(s) except Air General Permits (do not complete for renewal notifications)

Check one:

I hereby surrender all existing air permits authorizing operation of the facility indicated on this form; specifically permit number(s) _____.

No air permits currently exist for the operation of the facility indicated on this form.

Owner/Authorized Representative Statement

I, the undersigned, am the owner or authorized representative of the owner or operator of the facility addressed in this Air General Permit Notification Form. I hereby certify, based on information and belief formed after reasonable inquiry, that the statements made in this notification are true, accurate and complete. Further, I agree to operate and maintain the facility and any air pollution control equipment described in this notification so as to comply with all applicable standards and requirements for control of air pollutant emissions found in the statutes of the State of Florida and rules of the Department of Environmental Protection and revisions thereof.

I will promptly notify the Department of any changes to the information contained in this notification.

Robert Halpern Signature Date 5-28-04



April 23, 2009

RECEIVED

Florida Department of Environmental Protection
Northeast District Office
7825 Baymeadows Way, Suite 200-B
Jacksonville, Florida

APR 27 2009

RE: Alltel- ARMS No. 0010122 – General Permit - Continued Use Notification

NORTHEAST DISTRICT
DEP-JACKSONVILLE

Dear Madam/Sir:

Alltel Communications, L.L.C. (d/b/a Alltel Florida, Inc) is a communications company with facilities in the State of Florida, serving wireless telecommunication customers. As requested under the Rule 62-210.300(4) (b) (2) – F.A.C. Alltel is submitting a continued use notification for the facility located at:

Alltel Administrative/ MTSO Facility
7525 N.W. 4th Boulevard
Gainesville, Florida 32608
(Alachua County)

The primary use of the generator facility permit is related to the 800 kW backup emergency generator. Therefore we are submitting the following:

1. The Notification of Intent to Use General Permit renewal.
 2. Appendix A – Fuel Use and Runtime records for the Generator.
 3. Appendix B – MACT Applicability Determination
 4. Appendix C – Existing General Use permit.
- The generator is used exclusively for backup emergency power in the event of a public power outage. It is not used for “peak-shaving” or “co-generation” of power.
 - The fuel utilized is diesel fuel which is no greater than 0.05% sulfur content.
 - The emergency generator averages 2-4 hours per month of operation for testing and routine maintenance.

If you have any questions regarding this notification or require additional information, please contact me by phone at 501-905-1199, or by email at: John.Smith4@Verizonwireless.com.

Sincerely,

John J. Smith
Alltel Corp. Environmental Management
Environmental Program Manager

Attachments

cc: Robin Haeffner