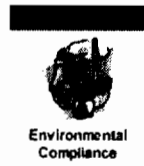




CONCRETE BATCHING PLANT

COMPLIANCE INSPECTION CHECKLIST



INSPECTION TYPE: ANNUAL (INS1, INS2) COMPLAINT/DISCOVERY (CI)
 RE-INSPECTION (FUI) ARMS COMPLAINT NO:

AIRS ID#: 0690066 **DATE:** 11/6/08 **ARRIVE:** 11:30 AM **DEPART:** 1:00 PM

FACILITY NAME: MACK CONCRETE INDUSTRIES INC

FACILITY LOCATION: 23902 COUNTY RD 561
ASTATULA 34705

OWNER/AUTHORIZED REPRESENTATIVE: GREG LISKEY **PHONE:** (352)742-2333

CONTACT NAME: Ed Riffe, Facilities Manager **PHONE:**

ENTITLEMENT PERIOD: 11/5/2007 / 11/5/2012
(effective date) (end date)

PART I: INSPECTION COMPLIANCE STATUS (check only one box)

IN COMPLIANCE MINOR Non-COMPLIANCE SIGNIFICANT Non-COMPLIANCE

PART II: TESTING/RECORDKEEPING REQUIREMENTS – Rule 62-296.414, F.A.C.
(check appropriate box(es))

Stack Emissions

1. Were visible emissions tests conducted during this site visit according to EPA Method 9 (Ref.: Chapter 62-297, F.A.C.)?----- Yes No
2. Are emissions from silos, weigh hoppers (batchers), and other enclosed storage and conveying equipment controlled to the extent necessary to limit visible emissions to 5 percent opacity?----- Yes No
3. During visible emissions tests of the silo dust collector exhaust points was the loading of the silo conducted at a rate that is representative of the normal silo loading rate, or at least at the minimum 25 tons per hour rate, unless such rate is unachievable in practice?----- Yes No
4. Are emissions from the weigh hopper (batcher) operation controlled by the silo dust collector? (If answer to this question is "Yes", then continue on to questions 4.a) and 4.b) below. If answer is "No" then skip 4.a) and 4.b) and continue on to question 5.)----- Yes No
 - a) Was the batching operation in operation during the visible emissions test?----- Yes No
 - b) During the visible emissions test, was the batching rate representative of the normal batching rate and duration?----- Yes No
5. If emissions from the weigh hopper (batcher) operation are controlled by a dust collector, which is separate from the silo dust collector, are the visible emissions tests of the weigh hopper (batcher) dust collector conducted while batching at a rate that is representative of the normal batching rate and duration?----- Yes No

PART II: TESTING/RECORDKEEPING REQUIREMENTS – Rule 62-296.414, F.A.C. – (continued)

(check appropriate box(es))

Compliance Demonstration - (Rule 62-296.401(5)(i), F.A.C.)

1. Is each dust collector exhaust point tested according to the visible emissions limiting standard as part of the annual compliance demonstration? (Rule 62-297.310(7)(a), F.A.C.)----- Yes No

New Facilities – (permitted pursuant to Rule 62-210.300(4), F.A.C., Air General Permits)

2. Did this facility demonstrate:
- a) initial compliance no later than 30 days after beginning operation?----- Yes No
- b) annual compliance within 60 days prior to each anniversary of the air general permit notification form submittal date?----- Yes No

Existing Facilities – (permitted pursuant to Rule 62-210.300(4), F.A.C., Air General Permits)

3. In order to demonstrate annual compliance, was an annual visible emissions test conducted 60 days prior to the AGP Notification form submission, and within 60 days prior to each anniversary date?----- Yes No

Test Reports – (Rules 62-213.440, F.A.C. and 62-297.310(8)(b), F.A.C.)

4. Was the required test report filed with the department as soon as practical, but no later than 45 days after the test was completed?----- Yes No

PART III: OPERATING/RECORDKEEPING REQUIREMENTS – Rule 62-210.300(4)(c)2., F.A.C.

(check appropriate box(es))

1. Is this facility: 1) a stationary ; 2) a relocatable ; or does it have: 3) both, stationary and relocatable concrete batching and/or nonmetallic mineral processing plants? (*Please check only one box.*)
2. If this is a stationary concrete batching plant, is there one or more relocatable nonmetallic mineral processing plants using individual air general permits at the same location? (*If your answer to this question is YES, then proceed to questions 2.a), thru 2.d), below.*)----- Yes No
- a) Are there any additional nonexempt units located at this facility?----- Yes No
- b) Is the total combined annual facility-wide fuel oil usage of all plants less than 240,000 gallons per calendar year?----- Yes No
- c) Is the quantity of material processed less than ten million tons per calendar year?----- Yes No
- d) Is the fuel oil sulfur content 0.5% by weight or less?----- Yes No
3. Does the owner/operator of the concrete batching plant maintain a log book or books to account for:
- a) fuel consumption on a monthly basis?----- Yes No
- b) material processed on a monthly basis?----- Yes No
- c) the sulfur content of the fuel being burned (Fuel supplier certifications)?----- Yes No

PART III: OPERATING/RECORDKEEPING REQUIREMENTS – Rule 62-296.414(2)(a) and (b), F.A.C. (continued)

(check appropriate box(es))

Unconfined Emissions – (Rule 62-296.320(4)(c), F.A.C.)

1. Does the owner /operator of the concrete batching plant take reasonable precautions to control unconfined emissions by:

- a) management of roads, parking areas, stock piles, and yards, which shall include one or more of the following:
- 1) paving and maintenance of roads, parking areas, stock piles, and yards?----- Yes No
 - 2) application of water or environmentally safe dust-suppressant chemicals when necessary to control emissions?----- Yes No
 - 3) removal of particulate matter from roads and other paved areas under control of the owner/operator to re-entrainment, and from building or work areas to reduce airborne particulate matter?----- Yes No
 - 4) reduction of stock pile height, or installation of wind breaks to mitigate wind entrainment of particulate matter from stock piles?----- Yes No
- b) use of spray bar, chute, or partial enclosure to mitigate emissions at the drop point to the truck?----- Yes No

PART IV: SPECIAL CONDITIONS AND PROCEDURES – Rule 62-210.300(4)(d)4., F.A.C.

A. New or Modified Process Equipment

1. Since the last inspection has there been
- a) installation of any new process equipment?----- Yes No
 - b) alterations to existing process equipment without replacement?----- Yes No
 - c) replacement of existing equipment substantially different than that noted on the most recent notification form?----- Yes No
 - d) If you answered **YES** to any of the above, did the owner submit a new and complete notification form and appropriate fee (Rule 62-4.050, FAC) to the appropriate DEP or local program office?----- Yes No

Allen Rainey

11/6/08

Inspector's Name (Please Print)

Date of Inspection



11/6/09

Inspector's Signature

Approximate Date of Next Inspection

COMMENTS:

1. Part III 1. a. 3) above -- All roads within the facility are composed of crushed rock.
2. Ed Riffe, Facilities Manager, relayed the following information: The facility manufactures monolithic manhole structures, precast utility vaults, sewage treatment structures, catch basins and other concrete structures used in road building. Prior to my visit this day, the facility received loads of cement and flyash. Structures that are rejected through quality control are collected for crushing and recycling. Crushing is conducted directly across the street about every five years and takes about two months to complete. Maximum production is ~370 cubic yards of cement a day. Periodic emissions were noted
3. Emissions from the silos are controlled with CP series pulse jet collector cartridges. Periodic emissions were noted from near the top of the cement silo in the production area. See photo 14 that depicts the gasket to be used to repair the equipment. I requested that Mr. Riffe inform me of when the repair is made.
4. Cement manufacturing occurred throughout my visit.
5. Mr. Riffe and I toured the entire facility grounds on a golf cart. Vehicular traffic created white dust clouds over the tops of the vehicles. Over 90% of the facility grounds were dry. I advised that reasonable precautions needed to be taken to control the emissions. Mr. Riffe provided a facility diagram (attached) and drew purple highlights where rows of sprinklers have been installed, primarily around the production and molding areas. He turned on some of the rows of sprinklers during the inspection, as indicated by the yellow highlights. Mr. Riffe indicated a project to install more sprinklers throughout the facility is ongoing. A water truck had wetted some of the grounds prior to my arrival. A dust suppressant called Euco Dust-Down - Bulk was formerly used on the grounds, but is no longer used (see attached MSDS).
6. Obtained record for yards of material produced for October 2008.
7. Obtained Invoice dated 7/29/08 and Straight Bill of Lading dated 11/4/08 showing purchases of ultra low-sulfur diesel.
8. No objectionable odors were detected on or off the facility property.
9. No VE tests were conducted during the visit. Fourteen photographs taken.

Facility Name: Mack Concrete Industries	ID#: 0690066
Date: 11/6/08	Sky Conditions:
Photographer: Allen Rainey <i>Ed Riffe present</i>	clear

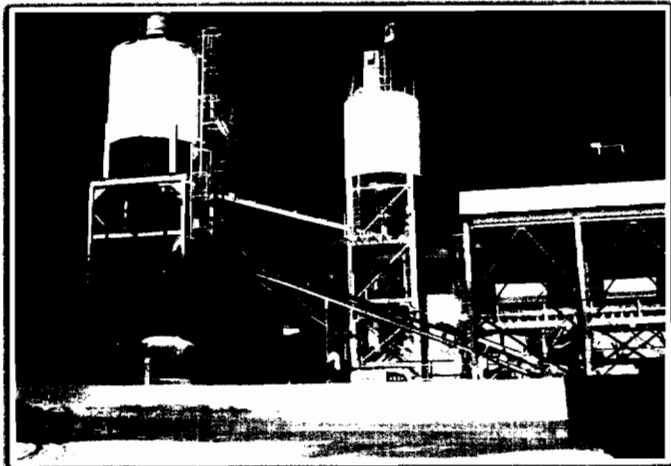


Photo 1 of 14: Northern view of production area. Cement and slag silos in foreground. Cement chute in lower left corner of photo dispenses cement into trough depicted in photo 3

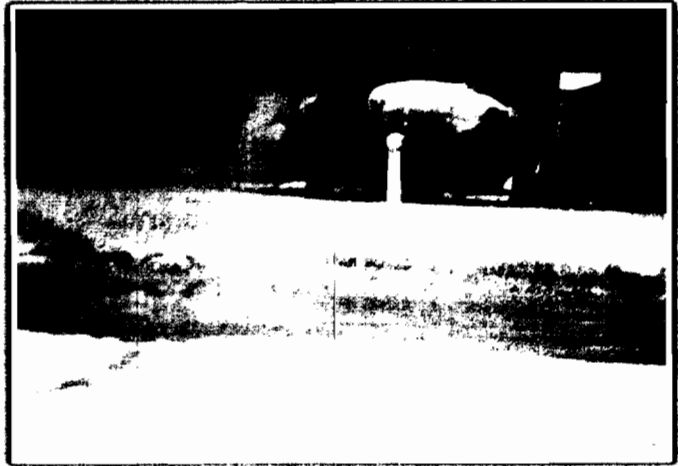


Photo 2 of 14: Close-up view of production area and cement chute depicted in photo 1. Note cement trickling from chute. The chute dispenser door will be repaired using the green gasket depicted in photo 4.



Photo 3 of 14: Western view of production area trough (top of photo at left).



Photo 4 of 14: Gasket to be used in chute door (top of photo at left).

*Digital camera used. Photo files saved at:
 a:\Compliance-Central Files\Inspection Reports 2008-
 2009\Lake*

Facility Name: Mack Concrete Industries	ID#: 0690066
Date: 11/6/08	Sky Conditions:
Photographer: Allen Rainey <i>Ed Riffe present</i>	clear

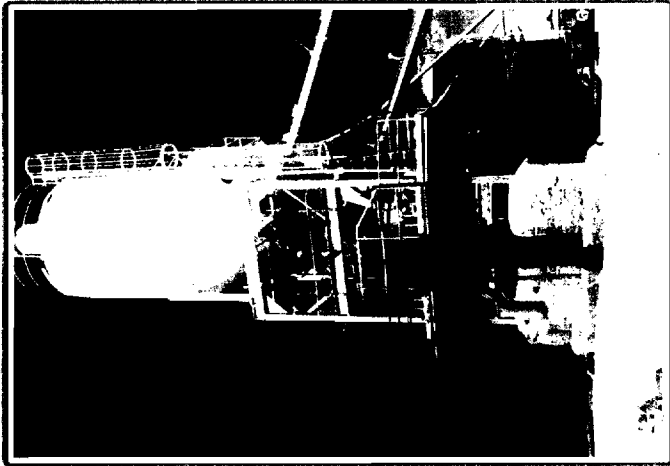


Photo 5 of 14: Northern view of production area cement silo with chute (top of photo at left).



Photo 6 of 14: Eastern view of production area and yard; cement trough and aggregate bins at left, mold storage building at right.

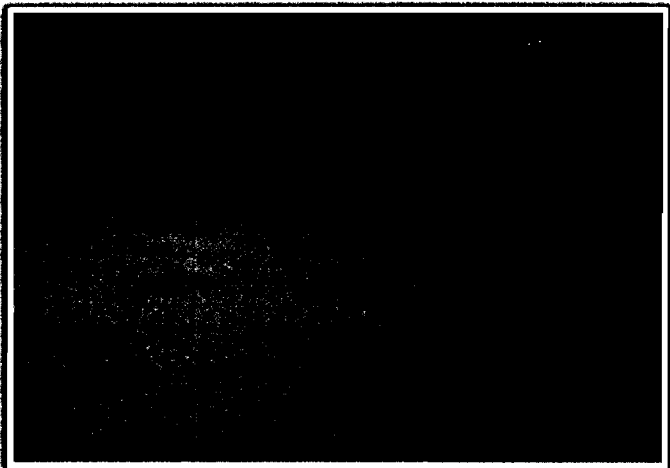


Photo 7 of 14: Eastern view of storage yard.

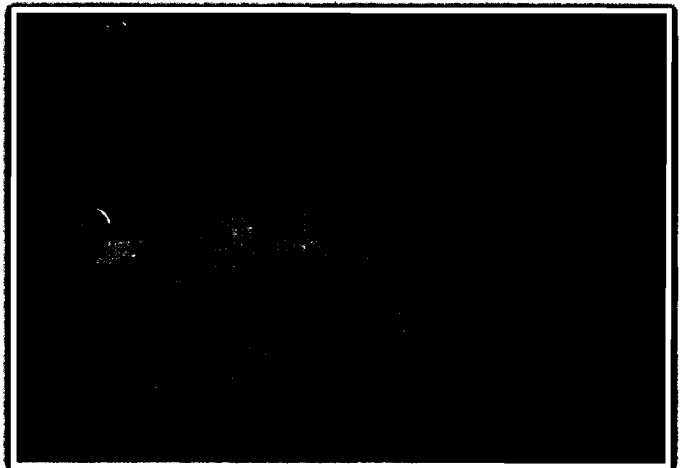


Photo 8 of 14: Eastern view of storage yard (similar view as depicted in photo 7).

*Digital camera used. Photo files saved at:
 O:\ Compliance - Central Files \ Inspection Reports 2008-2009 \
 Lake \0690066 - Mack - Concrete - Industries*

Facility Name: Mack Concrete industries	ID#: 0690066
Date: 11/6/08	Sky Conditions:
Photographer: Allen Rainey	<i>Ed Ritte present.</i> clear



Photo 9 of 14: NNE view of storage yard.

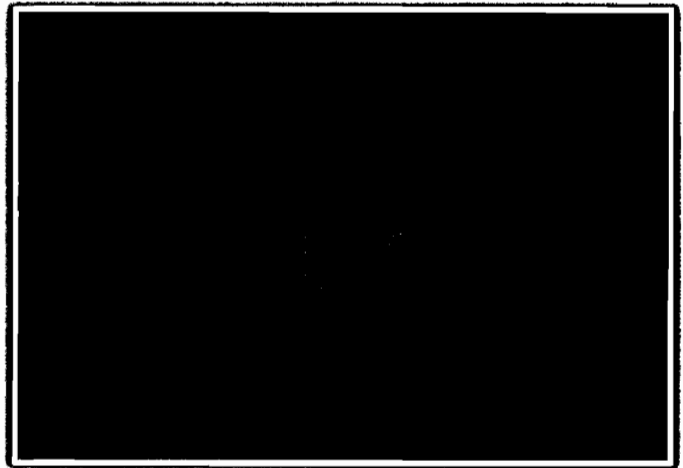


Photo 10 of 14: ESE view of storage yard.

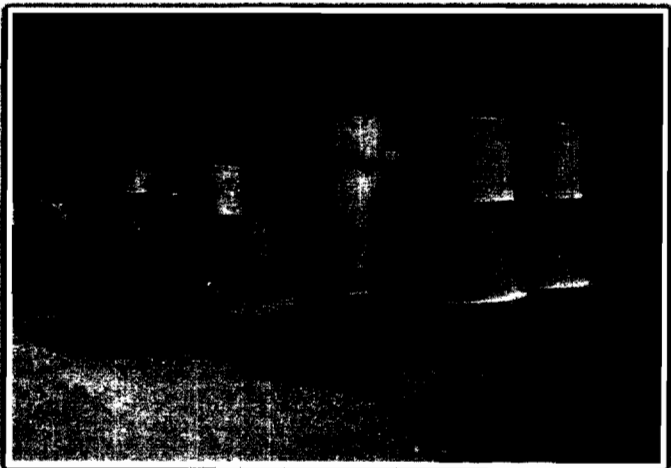


Photo 11 of 14: NE view of storage yard.

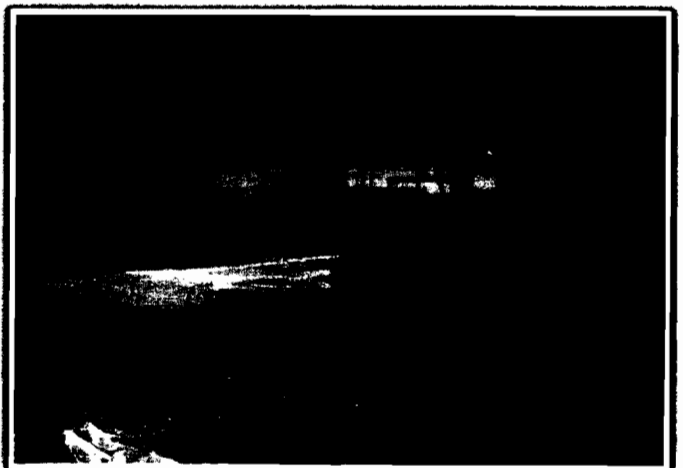


Photo 12 of 14: ESE view of storage yard.

*Digital Camera used. Photo Files saved at:
 O:\Compliance - Central Files\Inspection Reports 2008-2009\Lake\0690066 - Mack Concrete industries*

Facility Name: <i>Mack Concrete Industries</i>	ID#: <i>0690066</i>
Date: <i>11/6/08</i>	Sky Conditions:
Photographer: <i>Allen Rainey</i> <i>Ed Riffe present.</i>	<i>clear</i>

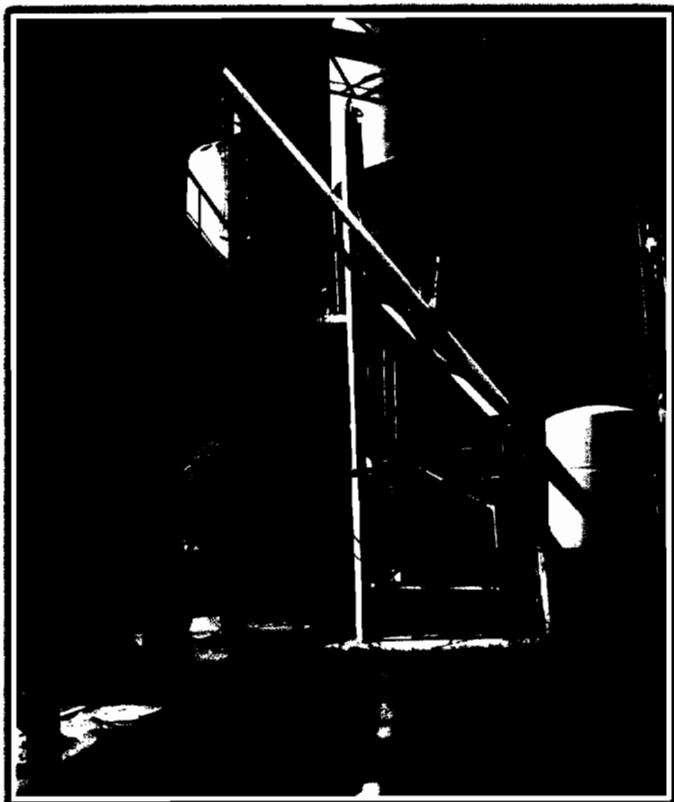


Photo 13 of 14: W view of production area.

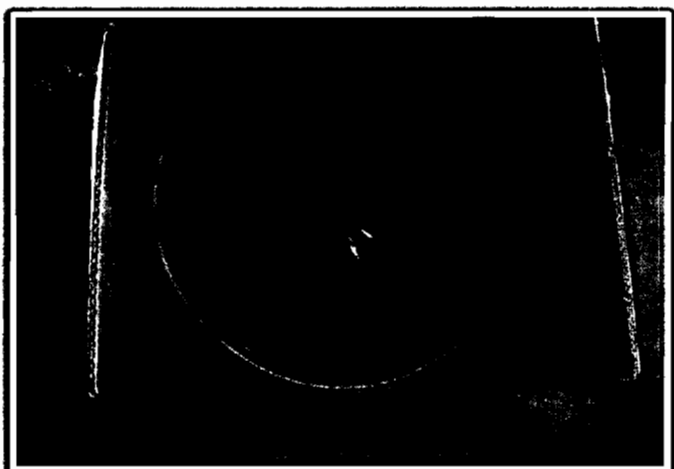
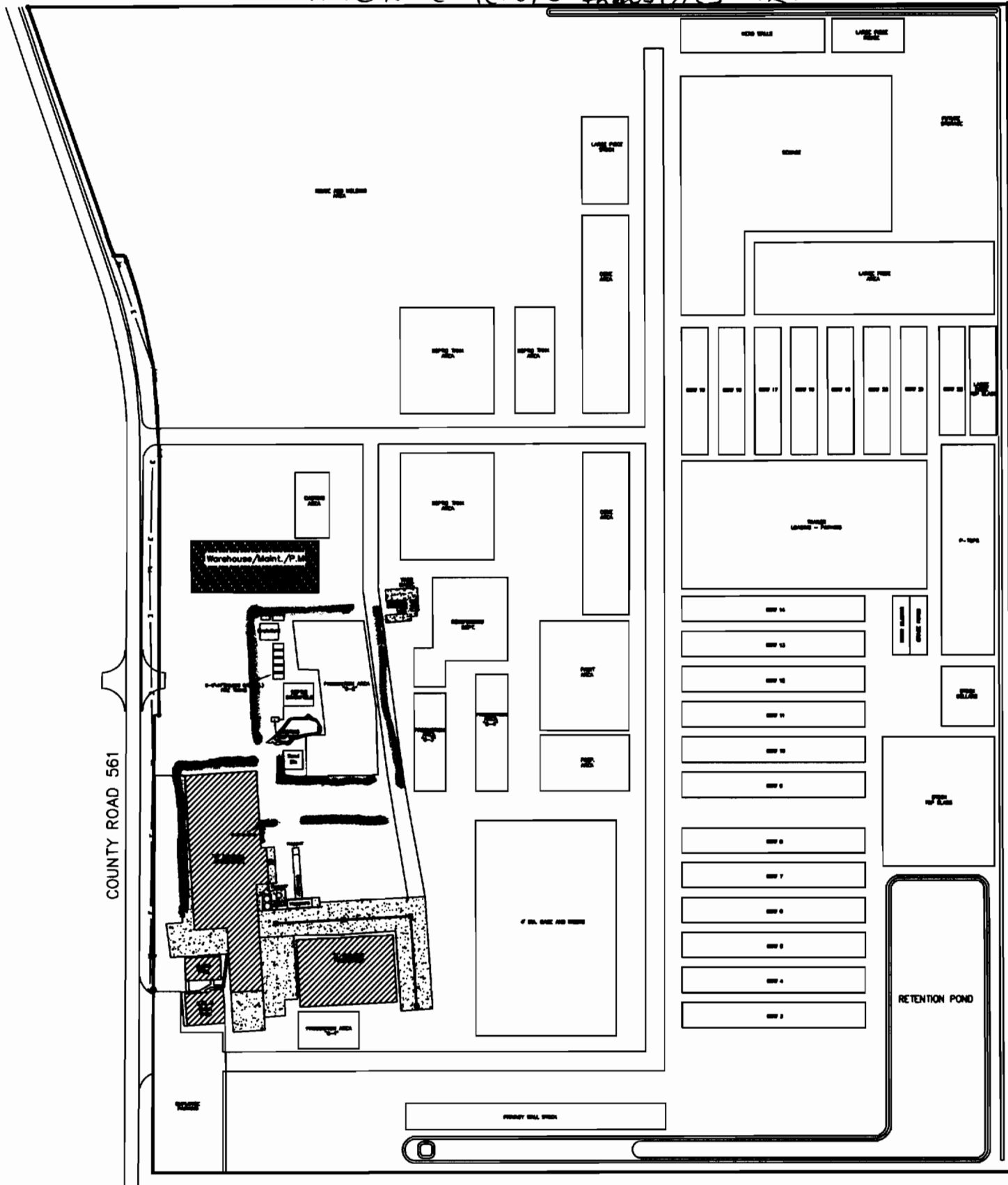


Photo 14 of 14: Gasket to be used in repairing leaking production area silo area.

*Digital Camera Used. Photo files saved at:
O:\Compliance - Central Files\ Inspection Reports 2008-2009\ Lake\
0690066 - Mack Concrete Industries*

Mack Concrete Industries Inc.



MCI Number of Work Days = 23
 Daily Budget YDS = 170.00
 Monthly Budget YDS = 3,910.00

Printed: 11/06/08 12:53:31

PRODUCTION

Day	Prod Date	YDS
1	10/01/08	110.93
2	10/02/08	120.32
3	10/03/08	117.90
	10/04/08	66.29
	10/05/08	0.00
4	10/06/08	108.71
5	10/07/08	121.12
6	10/08/08	131.02
7	10/09/08	131.88
8	10/10/08	124.66
	10/11/08	0.00
	10/12/08	0.00
9	10/13/08	109.12
10	10/14/08	116.14
11	10/15/08	135.12
12	10/16/08	116.32
13	10/17/08	107.88
	10/18/08	0.00
	10/19/08	0.00
14	10/20/08	116.72
15	10/21/08	136.12
16	10/22/08	121.78
17	10/23/08	100.48
18	10/24/08	72.96
	10/25/08	0.00
	10/26/08	0.00
19	10/27/08	108.15
20	10/28/08	114.16
21	10/29/08	95.71
22	10/30/08	104.84
23	10/31/08	99.45



	MTD Actual YDS		Avg YDS		to Need per day
	2,687.76		116.86		
	YTD Actual YDS		YTD Avg YDS		
	27,892.52		127.95		

Material Safety Data Sheet



The Euclid Chemical Company

EUCO DUST-DOWN - BULK

Version 1
REVISION DATE: 05/17/2005

Print Date 07/03/2007

SECTION 1 - PRODUCT IDENTIFICATION

Trade name : EUCO DUST-DOWN - BULK
Product code : 835 99

COMPANY : Euclid Chemical Company
19218 Redwood Road
Cleveland, OH 44110

Telephone : 1-800-321-7628
Emergency Phone : U.S. only: 1-800-255-3924
International Users: Call Cleveland, OH 216-705-0100

Product use : Coating

SECTION 2 - HAZARDS IDENTIFICATION

Emergency Overview

Brown. Liquid. No serious effects anticipated under normal conditions of use. Leave area to breathe fresh air. Avoid further overexposure. If symptoms persist, get medical attention.

Acute Potential Health Effects/ Routes of Entry

Inhalation : No serious effects anticipated under normal conditions of use.
Eyes : Direct contact may cause mild irritation.
Ingestion : May cause gastrointestinal irritation, nausea, and vomiting.
Skin : May cause mild irritation.

Aggravated Medical Conditions

Pre-existing eye, skin and respiratory disorders may be aggravated by exposure.

Chronic Health Effects

Fillers are encapsulated and not expected to be released from product under normal conditions of use.

SECTION 3 - PRODUCT COMPOSITION

Chemical Name	CAS-No.	Weight %
Water	7732-18-5	> 60.0
Sodium lignosulfonate	8061-51-8	30.0 - 60.0

SECTION 4 - FIRST AID MEASURES

Get immediate medical attention for any significant overexposure.

Inhalation : Leave area to breathe fresh air. Avoid further overexposure. If symptoms persist, get medical attention.
Eye contact : Flush with water for 15 minutes. If irritation persists, get medical attention.

Material Safety Data Sheet



The Euclid Chemical Company

EUCO DUST-DOWN - BULK

Version 1
REVISION DATE: 05/17/2005

Print Date 07/03/2007

- Skin contact: Wash area of contact thoroughly with hand cleaner followed by soap and water. If irritation, rash or other disorders develop, get medical attention immediately.
Ingestion: Get medical attention. Do not induce vomiting.
Notes to physician: Not applicable.

SECTION 5 - FIRE FIGHTING MEASURES

- Flash point: Not available
Method: Not available
Lower explosion limit: Not available
Upper explosion limit: Not available
Autoignition temperature: Not available.
Extinguishing media: This product is not expected to burn under normal conditions of use.
Hazardous combustion products: Carbon monoxide and carbon dioxide can form. Smoke, fumes.
Protective equipment for firefighters: Use accepted fire fighting techniques. Wear full firefighting protective clothing including self-contained breathing apparatus (SCBA).
Fire and explosion conditions: This product not expected to ignite under normal conditions of use.

SECTION 6 - ACCIDENTAL RELEASE MEASURES

Transfer to appropriate container for disposal. Stop flow. Contain spill. Keep out of water courses. Absorb spill in sand, earth or other suitable material. Transfer to appropriate container for disposal. Use appropriate protective equipment. Avoid contact with material.

SECTION 7 - HANDLING AND STORAGE

Handle in compliance with common hydraulic fluid best practices. Clean hands thoroughly after handling. Keep from freezing. Do not use in confined or poorly ventilated areas. Prevent inhalation of vapor, ingestion, and contact with skin eyes and clothing. Keep container closed when not in use. Precautions also apply to emptied containers. Store in sealed containers in a dry, ventilated warehouse location above freezing.

SECTION 8 - EXPOSURE CONTROLS / PERSONAL PROTECTION

- Personal protection equipment: Use appropriate personal protective equipment.
Respiratory protection: Not required under normal conditions of use. Wear appropriate NIOSH/MSHA approved respirator with combination particulate filter and vapor gas removing cartridge when the ventilation is not adequate or if it is necessary to abrade or grind surfaces coated with this product.
Hand protection: Use suitable impervious rubber or vinyl gloves and protective apparel to reduce exposure.
Eye protection: Wear appropriate eye protection. Wear chemical safety goggles and/or face shield to prevent eye contact. Do not wear contact lenses. Do not touch eyes with contaminated body parts or materials. Have eye washing facilities readily available.

Material Safety Data Sheet



The Euclid Chemical Company

EUCCO DUST-DOWN BULK

Version 1
REVISION DATE: 05/17/2005

Print Date: 07/03/2007

- available.
- Skin and body protection : Prevent contact with shoes and clothing. Use rubber apron and overshoes.
- Protective measures : Other equipment not normally required. Use professional judgment in the selection, care, and use.
- Engineering measures : Not required under normal conditions of use. Use local exhaust when the general ventilation is inadequate.

Exposure Limits

No known components with exposure limits.

SECTION 9 - PHYSICAL AND CHEMICAL PROPERTIES

- Form : Liquid
- Color : Brown
- Odor : Mild Organic
- pH : Not available
- Vapour pressure : Not available.
- Vapor density : Heavier than air
- Melting point/range : Not available.
- Freezing point : Not available.
- Boiling point/range : 212 °F, 100 °C
- Water solubility : Soluble
- Specific Gravity : 1.23
- % Volatile Weight : 62 %

SECTION 10 - REACTIVITY / STABILITY

- Substances to avoid : Strong acids. Strong bases.
- Stability : Stable
- Hazardous polymerization : Will not polymerize

SECTION 11 - TOXICOLOGICAL INFORMATION

Heavier than air
Sodium lignosulfonate, CAS-No.: 8061-51-8
Acute oral toxicity (LD-50 oral) 40,000 mg/kg (Rat)

Material Safety Data Sheet



EUCLID DUST-DOWN BULK

Version 1
REVISION DATE: 05/17/2005

Print Date 07/03/2007

SECTION 12 - ECOLOGICAL INFORMATION

No Data Available

SECTION 13 - DISPOSAL CONSIDERATIONS

Disposal Method : Waste not regulated under RCRA. Incinerate at EPA approved facility or dispose of waste in compliance with state and local regulations.

SECTION 14 - TRANSPORTATION / SHIPPING DATA

TDG / DOT Shipping Description:

NOT REGULATED

SECTION 15 - REGULATORY INFORMATION

North American Inventories:

All components are listed or exempt from the TSCA inventory.
This product or its components are listed on, or exempt from the Canadian Domestic Substances List.

U.S. Federal Regulations:

SARA 313 Components : None present or none present in regulated quantities.
SARA 311/312 Hazards : Based on an evaluation of the components used, this product does not contain hazardous ingredients identified as per 29 CFR 1910.1200.

OSHA Hazardous Components : None

OSHA Flammability : Not Regulated

Regulatory VOC (less water and exempt solvent) : 0 g/l

VOC Method 310 : 0 %

U.S. State Regulations:

Penn RTK Components : Water 7732-18-5
Sodium lignosulfonate 8061-51-6

NJ RTK Components : Water 7732-18-5
Sodium lignosulfonate 8061-51-6

Chemicals known to the State of California to cause cancer, birth defects and/or other reproductive harm:
None known.

Material Safety Data Sheet



EUCO DUST-DOWN-BULK

Version 1
REVISION DATE: 05/17/2005

Print Date 07/03/2007

SECTION 16 - OTHER INFORMATION

HMIS Rating :

Health	0
Flammability	0
Reactivity	0
PPE	

- 0 - Minimum
- 1 - Slight
- 2 - Moderate
- 3 - Serious
- 4 - Severe

Further information:

For Industrial Use Only. Keep out of Reach of Children. The hazard information herein is offered solely for the consideration of the user, subject to their own investigation of compliance with applicable regulations, including the safe use of the product under every foreseeable condition.

Prepared by: Rich Mikol

Legend

- ACGIH - American Conference of Governmental Hygienists
- CERCLA - Comprehensive Environmental Response, Compensation, and Liability Act
- DOT - Department of Transportation
- DSL - Domestic Substance List
- EPA - Environmental Protection Agency
- HMIS - Hazardous Materials Information System
- IARC - International Agency for Research on Cancer
- MSHA - Mine Safety Health Administration
- NDSL - Non-Domestic Substance List
- NIOSH - National Institute for Occupational Safety and Health
- NTP - National Toxicology Program
- OSHA - Occupational Safety and Health Administration
- PEL - Permissible Exposure Limit
- RCRA - Resource Conservation and Recovery Act
- RTK - Right To Know
- SARA - Superfund Amendments and Reauthorization Act
- STEL - Short Term Exposure Limit
- TLV - Threshold Limit Value
- TSCA - Toxic Substances Control Act
- TWA - Time Weighted Average
- VOC - Volatile Organic Compound
- WHMIS - Workplace Hazardous Materials Information System

ORIGINAL
SCOTTY'S OIL COMPANY, INC.

P.O. Box 620693
 9507 Boyce Avenue
 Orlando, FL 32862

Phone: 407-859-7281 • Fax: 407-438-3590

PAGE NO.	INVOICE DA
1	07/29/0
WAREHOUSE	INVOICE NC
1	19436

Ship Date: 07/29/08

SOLD TO: MACK CONCRETE INDUSTRIES INC.
 P.O. BOX 157
 ASTATULA, FL 34705

SHIP TO: MACK CONCRETE INDUSTRIES INC.
 YARD
 ASTATULA, FL

P.O. NUMBER	ACCOUNT NO.	SHIP VIA	SALES I.D.	B.O.L. / SHIPPING ORDER	TERMS
	46040044 24		01		DUE 10TH OF MONTH
Product Code/ Description	Shipped/ Billed UOM			Price Each	Extension
01 E10/REGULAR UNLEADED	279 GAL				920.14
LAKE COUNTY GAS TAX	279 GAL			3.29800	
FL POLLUTION FEE				0.13400	37.39
FL INSPECTION FEE				0.02071	5.78
FL STATE EXCISE GAS TAX				0.00125	0.35
Federal Environ. Fee Recovery				0.15600	43.52
FEDERAL EXCISE GAS TAX/E10				0.00120	0.33
06 ULTRA LOW SULPHUR DYED DIESEL	606 GAL				
FED. LEAK. UNDERGROUND STORAGE	606 GAL			3.98700	2416.12
FL POLLUTION FEE				0.00100	0.61
Federal Environ. Fee Recovery				0.02071	12.55
				0.00120	0.73

SHIPPERS CERTIFICATION: "THIS IS TO
 CERTIFY THAT THE ABOVE-NAMED MATERIALS
 ARE PROPERLY CLASSIFIED DESCRIBED,
 PACKAGED, MARKED AND LABELD, AND ARE IN

TOTAL
 AMOUNT

	Hazardous Material Emergency Contact: Call Petrotech 1-800-293-1743		TOTAL		

Thank You

SCOTTY'S OIL COMPANY, INC.
P.O. BOX 620693
ORLANDO, FLORIDA 32862

STRAIGHT BILL OF LADING

№ 197821

(407) 859-7281
FAX (407) 438-3590

TO: Mack Concrete

Astetula Fl

DATE: <u>11/24/08</u>	ORDER NO.
SHIP TO: <u>Yard</u>	
MAN # <u>2385923 / 2365919</u>	

PAST DUE ACCOUNTS SUBJECT TO A 1 1/2% PER MONTH SERVICE CHARGE

SALESPERSON	DATE SHIPPED	SHIPPED VIA	FOB POINT	TERMS	QUANTITY	DESCRIPTION	UNIT PRICE	TOTAL	
		<u>EL</u>	<u>TFA</u>	<u>10</u>	<u>260.9</u>	GALS. UNLEADED GAS 87			
						GALS. PREMIUM UNLEADED GAS 93			
						GALS. MIDGRADE GAS 89			
						CONVENTIONAL GASOLINE- NOT FOR SALE IN REFORMULATED AREA			
						GALS. 1-K KEROSENE			
						GALS. ULTRA LOW-SULFUR DIESEL 15PPM MAX SULFUR			
					<u>700.0</u>	GALS. RED ULTRA LOW SULFUR DIESEL			
						GALS. HIGH-SULFUR DIESEL			
						DYED DIESEL FUEL-NON-TAXABLE USE ONLY			
						PENALTY FOR TAXABLE USE - OFF ROAD USE ONLY			
Hazardous Material Emergency Contact: Call Petrotech 1-800-293-1743							TOTAL		

Thank You