

**Draw and Label ...**

- Draw Points
- Draw Line
- Draw Polygon
- Zoom to Shape
- Add Shape to Map
- Remove Highlighted Point
- Clear Graphics
- Plot Latitude/Longitude List
- Email This Map

**Analyze and Buffer ...**

- Get Driving Directions ...

**Measure and Set Units ...**

- Measure Distance
- Measure Area
- Set Distance Units
- Set Coordinate System

**Shape Type**

Your Area of Interest is being shown as a line.

**Shape Points**

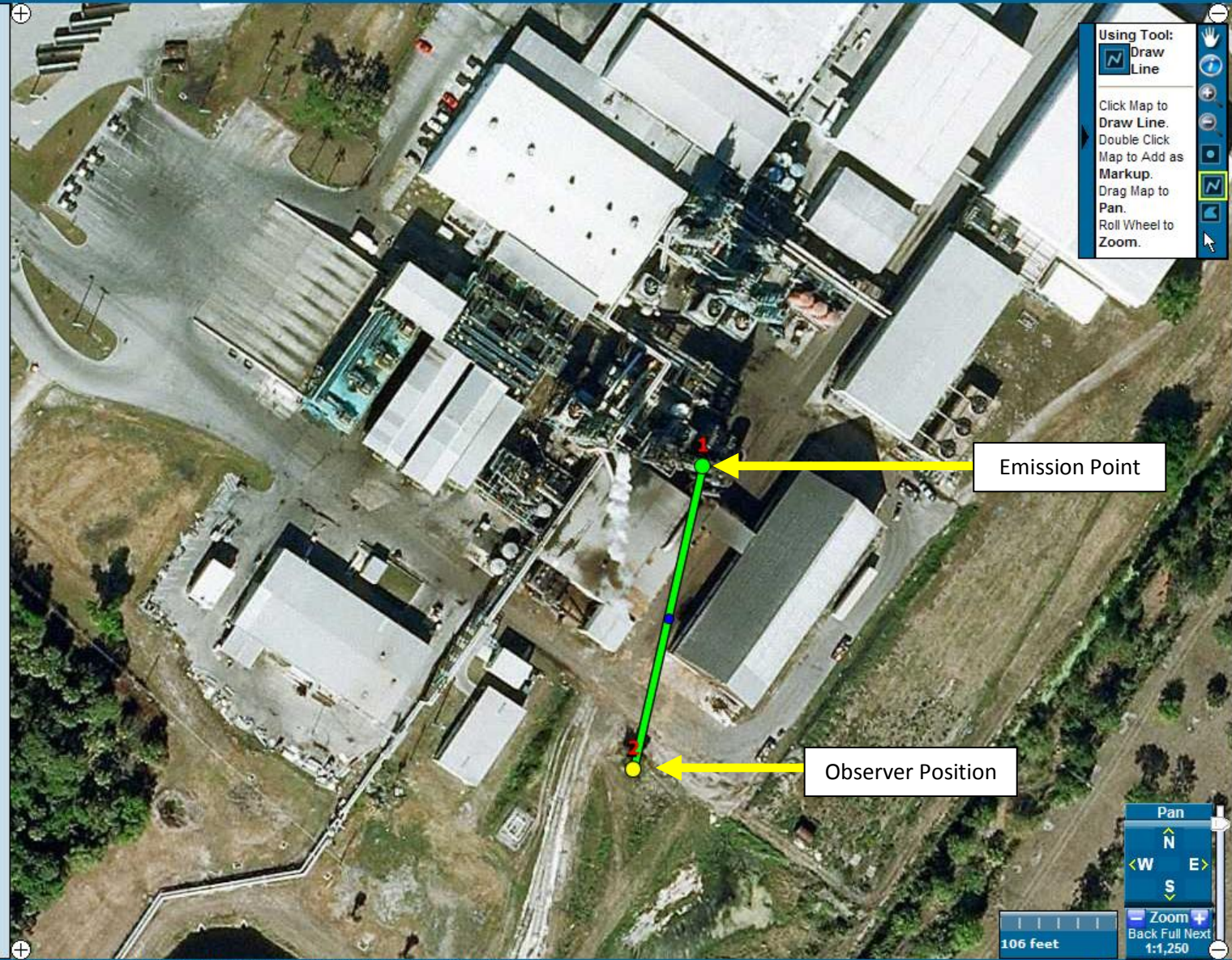
1: 27.04545784, -80.51158799  
 2: 27.04472124, -80.51180183

**Shape Segments**

1 to 2: 0.05240085 miles

**Shape Length**

Length 0.05240085 miles



**Using Tool:**

- Draw Line

Click Map to Draw Line.  
 Double Click Map to Add as Markup.  
 Drag Map to Pan.  
 Roll Wheel to Zoom.