

ParexUSA, air operating facility ID 1050386; Google Maps satellite images of ParexUSA facility;
This document created by Amaury Betancourt, Florida Department of Environmental Protection, on 07/05/2012.

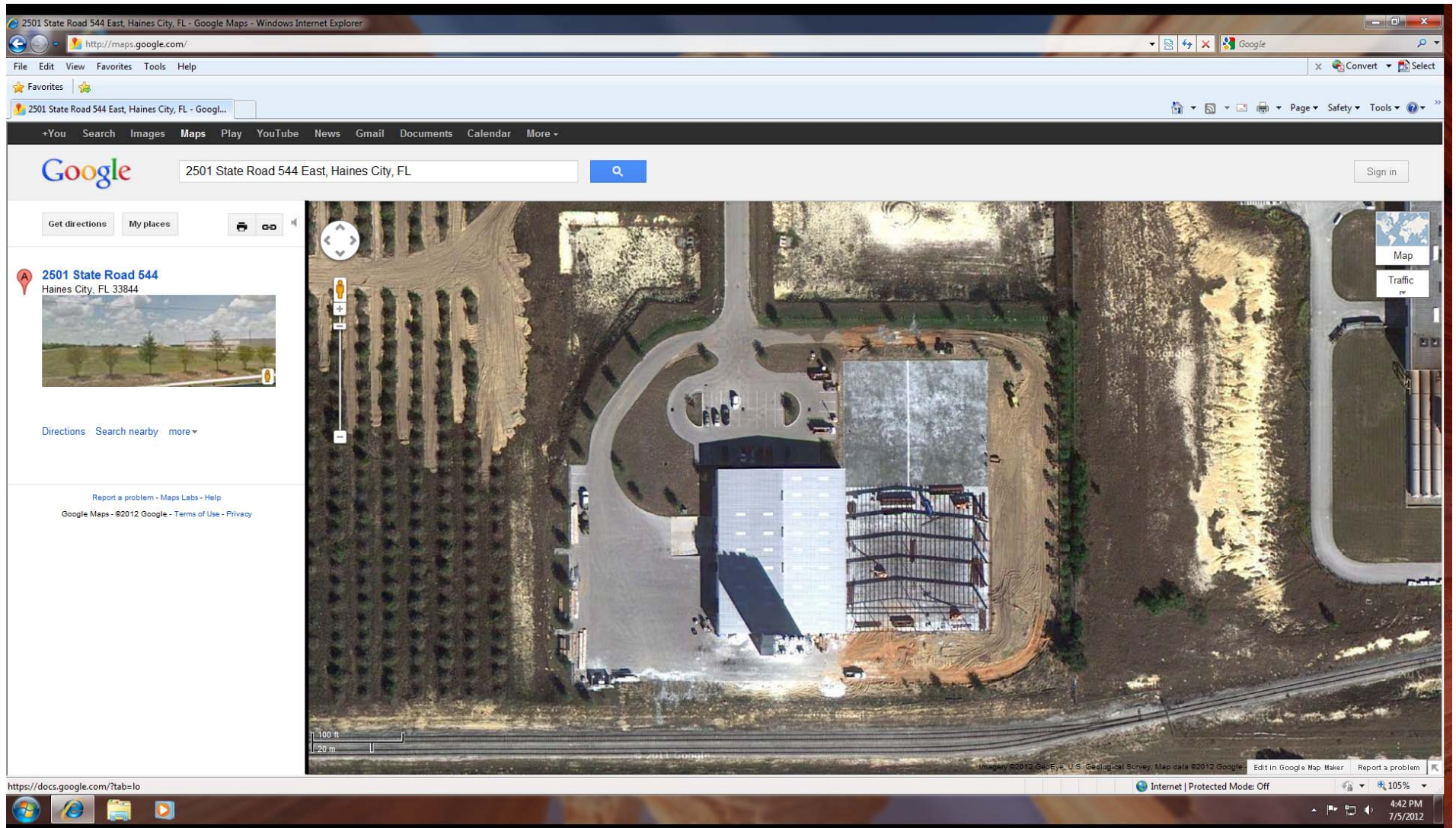


Figure 1: Google Maps satellite image: Imagery copyrighted 2012 by GeoEye and U.S. Geological Survey; Map Data copyrighted 2012 by Google; Map data does not appear to be current, possibly from 2010 or 2011 (Google watermarks on satellite image is difficult to read), since inspection On 05/11/2012 showed that East side of building (storage building) appeared to be completely constructed, whereas Google Maps image appears to show that the East part of building was under construction at the time that this satellite image was taken. This map was accessed on 07/05/2012 by Amaury Betancourt of the Florida Department of Environmental Protection

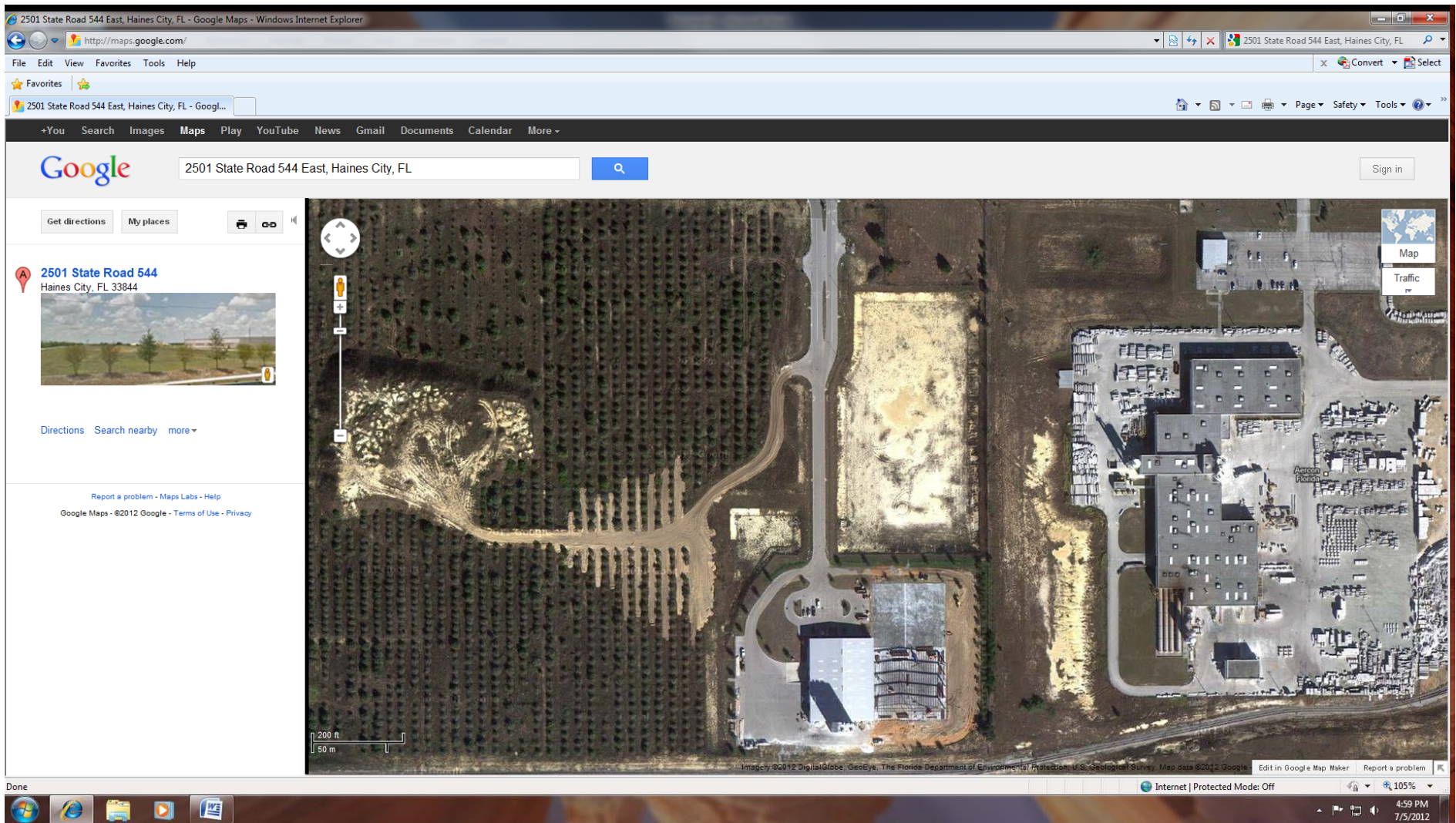


Figure 2: Google Maps satellite image: Imagery copyrighted 2012 by DigitalGlobe, GeoEye, The Florida Department of Environmental Protection, and U.S. Geological Survey; Map Data copyrighted 2012 by Google; Map data does not appear to be current, possibly from 2010 or 2011 (Google watermarks on satellite image is difficult to read), since inspection On 05/11/2012 showed that East side of building (storage building) appeared to be completely constructed, whereas Google Maps image appears to show that the East part of building was under construction at the time that this satellite image was taken. This map was accessed on 07/05/2012 by Amaury Betancourt of the Florida Department of Environmental Protection



Figure 3: Zoomed-in image of map of Figure 2 above. Google Maps satellite image: Imagery copyrighted 2012 by DigitalGlobe, GeoEye, The Florida Department of Environmental Protection, and U.S. Geological Survey; Map Data copyrighted 2012 by Google; Map data does not appear to be current, possibly from 2010 or 2011 (Google watermarks on satellite image is difficult to read), since inspection On 05/11/2012 showed that East side of building (storage building) appeared to be completely constructed, whereas Google Maps image appears to show that the East part of building was under construction at the time that this satellite image was taken. This map was accessed on 07/05/2012 by Amaury Betancourt of the Florida Department of Environmental Protection