

ArrMaz Custom Chemicals, Inc.
 500 HP Stean Boiler NSPS - Emission Unit ID: 007-003

Year	Month	Fuel Oil (gal/month)	Fuel Oil (hrs/month)	Sulfur Content (percent)	Natural Gas (cft/month)	Natural Gas (hrs/month)	Rolling 12 Month Total Fuel Oil (gal/12 months)	Rolling 12 Month Total Fuel Oil (hrs/12 months)	Rolling 12 Month Total Natural Gas (cft/12 months)	Rolling 12 Month Total Natural Gas (hrs/12 months)	Comment
2005	January	0	0								
	February	0	0								
	March	150 Gallons	1	>0.05%							Oil Burned for VE Test
	April	0	0								
	May	0	0								
	June	0	0								
	July	0	0								
	August	0	0								
	September	0	0								
	October	0	0								
	November	0	0								
	December	0	0								
2006	January	150 Gallons	1	>0.05%							Oil Burned for VE test
	February	0	0								
	March	0	0								
	April	0	0								
	May	0	0								
	June	0	0								
	July	0	0								
	August	0	0								
	September	0	0								
	October	0	0								
	November	0	0								
	December	0	0								
2007	January	0	0								
	February	0	0								
	March	0	0								
	April	0	0								
	May	0	0								
	June	0	0								
	July	0	0								
	August	0	0								
	September	0	0								
	October	0	0								
	November	0	0				0	0			
	December	0	0				0	0			
2008	January	0	0				0	0			
	February	0	0				0	0			
	March	0	0				0	0			
	April	0	0				0	0			
	May	0	0				0	0			
	June	0	0				0	0			
	July	0	0				0	0			
	August	0	0				0	0			
	September	0	0				0	0			
	October	0	0				0	0			
	November	0	0		2,139,390	583	0	0	0	0	* See Note Below
	December	0	0		2,210,703	598	0	0	2,139,390	583	
2009	January	0	0		2,179,708	576	0	0	4,350,093	1,181	
	February	0	0		2,486,400	672	0	0	6,529,801	1,757	
	March	0	0		2,752,800	744	0	0	9,016,201	2,429	
	April	0	0		1,028,600	278	0	0	11,769,001	3,173	
	May	0	0		1,816,700	491	0	0	12,797,601	3,451	
	June	0	0		2,664,000	720	0	0	14,614,301	3,942	
	July	0	0		2,465,984	672	0	0	17,278,301	4,662	
	August	0	0		2,516,190	720	0	0	19,744,285	5,334	
	September	0	0		2,693,644	720	0	0	22,280,475	6,054	
	October	0	0		2,728,505	744	0	0	24,894,119	6,774	
	November	0	0		2,597,780	720	0	0	27,622,624	7,518	
	December	0	0		2,778,110	744	0	0	28,081,014	7,655	
2010	January	0	0		4,031,431	744	0	0	28,648,421	7,801	
	February	0	0		3,183,007	624	0	0	30,500,144	7,969	
	March	0	0		131,908	37	0	0	31,196,751	7,921	
	April	0	0		293,754	480	0	0	28,575,859	7,214	
	May	0	0		1,234,541	678	0	0	27,841,013	7,416	
	June	0	0		1,869,792	360	0	0	27,258,854	7,603	
	July	0	0		1,918,988	480	0	0	26,464,646	7,243	
	August	0	0		78,797	22	0	0	25,917,650	7,051	
	September	0	0		1,755,548	432	0	0	23,480,257	6,353	
	October	0	0		2,703,046	648	0	0	22,602,161	6,065	
	November	0	0		1,198,083	336	0	0	22,576,702	5,969	
	December	0	0		59,197	16	0	0	21,177,005	5,585	
2011	January	0	0		1,048,030	144	0	0	19,458,092	4,857	
	February	0	0		236371.00	374.00	0	0	15,474,691	4,267	
	March				1233.10		0	0	12,528,055	4,007	
	April						0	0	12,397,380	3,970	
	May						0	0	12,103,626	3,490	
	June						0	0	10,868,085	2,812	
	July						0	0	8,998,293	2,452	
	August						0	0	7,080,305	1,972	
	September						0	0	7,001,508	1,950	
	October						0	0	5,245,960	1,518	
	November						0	0	2,542,914	870	
	December						0	0	1,344,831	534	

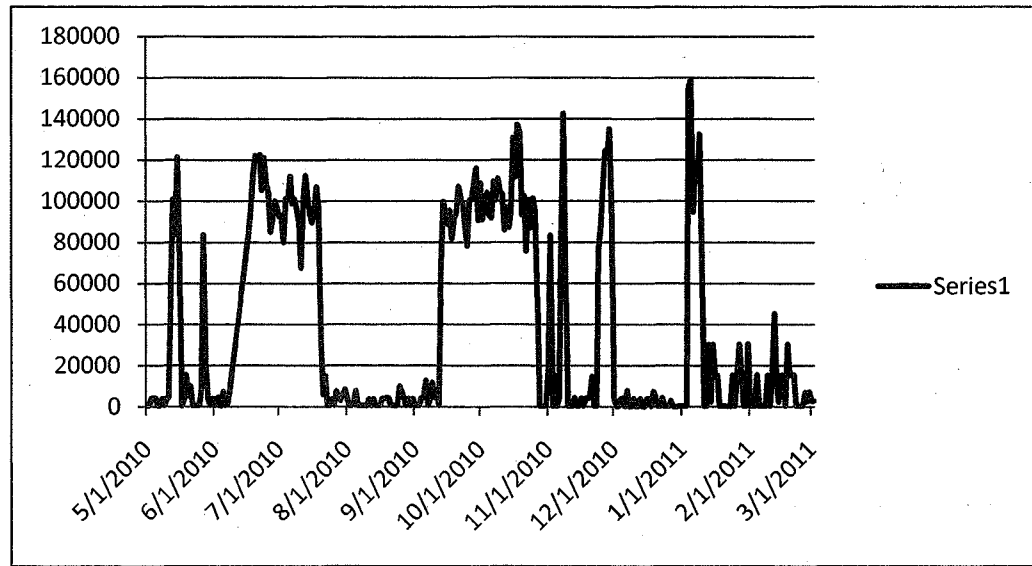
Permit No: 1050097-018-AF and 1050097-020-AC

Permit Limitations: Maximum Heat Input Rate: Natural Gas = 22.0 MMBTU/hr; New No. 2 Fuel Oil = 22.5 MMBTU/hr
 Maximum Firing Rate: Natural Gas = 20,952 cft/hr; New No. 2 Fuel Oil = 150 gallons per hour
 Maximum sulfur content: 0.5 percent
 Maximum hours of operation by fuel type: Natural gas: 8,760 hr/yr
 Fuel Oil: 1,000 gallon/yr

* Note: AC permit 1050097-020-AC started requiring monthly natural gas record to be kept starting Nov. 2008. It also required 12 month rolling totals be kept. See Condition No. 39.

EU 003 DAILY GAS USAGE RECORDS

Date	SCFD
5/1/2010	252.0648975
5/2/2010	533.539196
5/3/2010	4079.205976
5/4/2010	4186.358675
5/5/2010	4223.80122
5/6/2010	549.1400318
5/7/2010	573.6553783
5/8/2010	4001.629816
5/9/2010	543.6780148
5/10/2010	3964.21105
5/11/2010	4278.891745
5/12/2010	53516.80825
5/13/2010	100934.0142
5/14/2010	83722.8544
5/15/2010	121506.2329
5/16/2010	75344.51769
5/17/2010	451.6834974
5/18/2010	3680.650857
5/19/2010	15555.22262
5/20/2010	5279.368049
5/21/2010	10129.38547
5/22/2010	603.8050938
5/23/2010	557.0925179
5/24/2010	549.3607388
5/25/2010	640.7599697
5/26/2010	7648.529947
5/27/2010	83671.1034
5/28/2010	20825.05705
5/29/2010	4213.52273
5/30/2010	694.0243073
5/31/2010	4059.30979
6/1/2010	613.233427
6/2/2010	3992.113607



6/3/2010	4809.590597
6/4/2010	562.8601322
6/5/2010	7420.127129
6/6/2010	672.0129738
6/7/2010	1342.266245
6/8/2010	8316.453094
6/9/2010	16721.48657
6/10/2010	25126.51978
6/11/2010	33531.55298
6/12/2010	41936.58618
6/13/2010	50341.61951
6/14/2010	58746.65259
6/15/2010	67151.68579
6/16/2010	75556.71973
6/17/2010	83961.75293
6/18/2010	96424.76636
6/19/2010	112944.6077
6/20/2010	122183.9126
6/21/2010	120636.1621
6/22/2010	122640.9715
6/23/2010	105441.8171
6/24/2010	121057.8127
6/25/2010	109089.3352
6/26/2010	103941.0098
6/27/2010	84950.13892
6/28/2010	91948.64975
6/29/2010	100173.6067
6/30/2010	97556.58179
7/1/2010	92374.63745
7/2/2010	93166.64502
7/3/2010	79880.58125
7/4/2010	101445.8879
7/5/2010	100559.6411
7/6/2010	112172.4912

7/7/2010	98891.62036
7/8/2010	101208.9231
7/9/2010	96409.29883
7/10/2010	90473.13509
7/11/2010	67460.62212
7/12/2010	100677.7693
7/13/2010	112577.1221
7/14/2010	102733.2588
7/15/2010	94407.8811
7/16/2010	89591.40696
7/17/2010	94199.57544
7/18/2010	107095.3926
7/19/2010	96983.80762
7/20/2010	30453.17191
7/21/2010	6017.775574
7/22/2010	14933.13131
7/23/2010	540.0013771
7/24/2010	489.9188499
7/25/2010	3729.141645
7/26/2010	640.4620628
7/27/2010	7538.035746
7/28/2010	5090.890202
7/29/2010	3049.672371
7/30/2010	5713.982811
7/31/2010	8482.5835
8/1/2010	4111.111423
8/2/2010	542.1507092
8/3/2010	576.1407909
8/4/2010	2572.41382
8/5/2010	7675.523241
8/6/2010	554.0493641
8/7/2010	521.7070313
8/8/2010	518.0866261
8/9/2010	501.3818359

8/10/2010	507.794322
8/11/2010	3830.129618
8/12/2010	541.9495869
8/13/2010	3931.930952
8/14/2010	668.0739307
8/15/2010	700.260437
8/16/2010	581.8527241
8/17/2010	4038.766962
8/18/2010	4055.480145
8/19/2010	4234.464085
8/20/2010	4307.003149
8/21/2010	706.4879513
8/22/2010	617.4420567
8/23/2010	514.7094383
8/24/2010	892.5477943
8/25/2010	10076.48122
8/26/2010	7598.648712
8/27/2010	4212.493387
8/28/2010	589.4052639
8/29/2010	4156.277857
8/30/2010	528.7824192
8/31/2010	3933.884333
9/1/2010	553.9560928
9/2/2010	526.5405731
9/3/2010	565.2440252
9/4/2010	4220.037745
9/5/2010	4318.924734
9/6/2010	12651.63144
9/7/2010	658.6177387
9/8/2010	4238.242691
9/9/2010	11717.1375
9/10/2010	4390.324862
9/11/2010	7827.0429
9/12/2010	740.1512375

9/13/2010	67406.24903	10/17/2010	111604.019	11/20/2010	4279.453858
9/14/2010	99808.44597	10/18/2010	137178.3877	11/21/2010	14745.12425
9/15/2010	94411.0093	10/19/2010	133388.3306	11/22/2010	411.0258036
9/16/2010	88718.68008	10/20/2010	93140.4562	11/23/2010	432.0542688
9/17/2010	95477.63431	10/21/2010	102566.6169	11/24/2010	76434.45109
9/18/2010	81661.59278	10/22/2010	75497.60729	11/25/2010	88091.50084
9/19/2010	91347.45067	10/23/2010	100584.1408	11/26/2010	108795.1274
9/20/2010	94029.09464	10/24/2010	86905.80881	11/27/2010	124411.5889
9/21/2010	107218.1361	10/25/2010	101514.4327	11/28/2010	122684.554
9/22/2010	101371.2163	10/26/2010	95448.72754	11/29/2010	135075.6694
9/23/2010	98520.47261	10/27/2010	53085.33281	11/30/2010	93899.38263
9/24/2010	88345.3019	10/28/2010	494.7250748	12/1/2010	4182.5558
9/25/2010	78173.75616	10/29/2010	453.0906181	12/2/2010	242.2463102
9/26/2010	100451.9248	10/30/2010	468.2820358	12/3/2010	282.8153892
9/27/2010	100635.0112	10/31/2010	498.5270567	12/4/2010	3884.416082
9/28/2010	108787.301	11/1/2010	18237.5584	12/5/2010	4263.403681
9/29/2010	116181.1887	11/2/2010	83448.39286	12/6/2010	180.8168966
9/30/2010	90596.62815	11/3/2010	457.0409975	12/7/2010	8008.648347
10/1/2010	108814.2561	11/4/2010	15434.47413	12/8/2010	153.9142523
10/2/2010	90962.55481	11/5/2010	343.1671567	12/9/2010	209.5225618
10/3/2010	97617.08423	11/6/2010	4277.366618	12/10/2010	4130.904799
10/4/2010	104291.9458	11/7/2010	85776.23083	12/11/2010	194.1015985
10/5/2010	92975.14036	11/8/2010	142658.6353	12/12/2010	231.1497145
10/6/2010	91658.82568	11/9/2010	59031.59797	12/13/2010	3958.920161
10/7/2010	109550.3829	11/10/2010	341.8979874	12/14/2010	64.02240968
10/8/2010	100370.7616	11/11/2010	325.0123882	12/15/2010	84.41823883
10/9/2010	111025.4695	11/12/2010	308.4434185	12/16/2010	3992.273061
10/10/2010	104544.0791	11/13/2010	4505.818976	12/17/2010	4062.438072
10/11/2010	103405.1871	11/14/2010	368.1991439	12/18/2010	278.5570779
10/12/2010	85879.40414	11/15/2010	368.306963	12/19/2010	7349.712537
10/13/2010	96942.59875	11/16/2010	4237.666217	12/20/2010	4167.891606
10/14/2010	87182.63562	11/17/2010	415.8204746	12/21/2010	248.5557561
10/15/2010	94051.21874	11/18/2010	4153.789199	12/22/2010	264.039788
10/16/2010	130946.2646	11/19/2010	4134.400417	12/23/2010	4397.722072

12/24/2010 255.9545298
12/25/2010 247.3922169
12/26/2010 158.7845478
12/27/2010 2987.62348
12/28/2010 45.68251157
12/29/2010 77.89932656
12/30/2010 246.6854081
12/31/2010 344.8805685
1/1/2011 351.0793953
1/2/2011 352.1704197
1/3/2011 329.6078281
1/4/2011 154811.8157
1/5/2011 159069.8374
1/6/2011 94646.29451
1/7/2011 116489.1127
1/8/2011 110126.7142
1/9/2011 132660.9919
1/10/2011 75630.72638
1/11/2011 312.179183
1/12/2011 253.7793756
1/13/2011 30181.94593
1/14/2011 2359.728208
1/15/2011 30358.80115
1/16/2011 15353.27901
1/17/2011 15307.2653
1/18/2011 345.6134014
1/19/2011 372.6978302
1/20/2011 355.2665429
1/21/2011 368.5823069
1/22/2011 248.1947751
1/23/2011 181.2421902
1/24/2011 15338.01251
1/25/2011 347.1224804
1/26/2011 15349.76031

1/27/2011 30280.82637
1/28/2011 15272.45181
1/29/2011 266.6082544
1/30/2011 291.4608645
1/31/2011 30417.77604
2/1/2011 375.3774147
2/2/2011 409.7479677
2/3/2011 401.269269
2/4/2011 15460.16615
2/5/2011 426.4877319
2/6/2011 343.9878063
2/7/2011 358.2656727
2/8/2011 257.261826
2/9/2011 15290.62446
2/10/2011 300.9809351
2/11/2011 15251.72075
2/12/2011 45273.75647
2/13/2011 13473.53896
2/14/2011 2489.766455
2/15/2011 15318.98652
2/16/2011 15369.80696
2/17/2011 375.5952806
2/18/2011 30493.42402
2/19/2011 15408.77351
2/20/2011 15419.0501
2/21/2011 15443.08588
2/22/2011 403.623044
2/23/2011 421.7913752
2/24/2011 402.1086025
2/25/2011 370.4001341
2/26/2011 7007.475324
2/27/2011 2614.9872
2/28/2011 7209.174389
3/1/2011 2665.269711

3/2/2011 2897.201608

C