

Facility Name: Omni Waste of Osceola County, LLC	ID #: 0970079
Date: 1/13/08	Sky Conditions: broken
Persons Present: DEP: Allen Rainey (Photographer), Rodell Rice, Caroline Shine, Wanda Parker-Garvin, Golder Associates: Kevin Brown, Don Grigg, Omni: Mike Kaiser	
Digital camera used. Photo files saved at: C:\Documents and Settings\rainey_a\My Documents\My Pictures\Omni Landfill	



Photo 1: SSW view of landfill gas collection and control device.

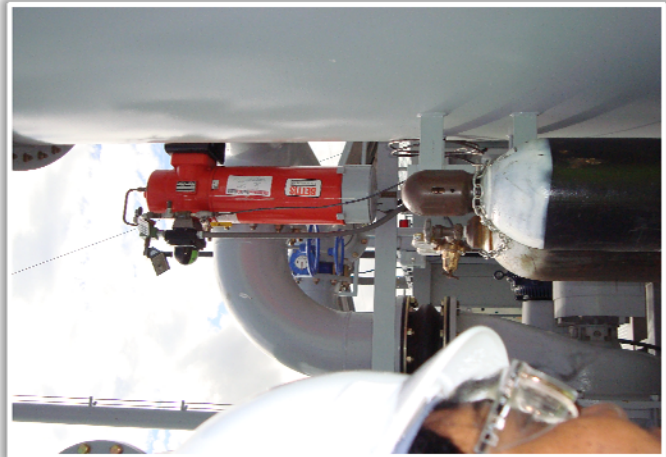


Photo 2: Red device automatically shuts off gas flow to flare when the flare flame goes out.



Photo 3: Digital gauge showing -24.9 vacuum near the blower within the collection system



Photo 4: Needle gauges on inlet to blowers show temperature (left) and vacuum (right) within the collection system. Inlet pressure can be set so that collection system well adjustments and weather fronts have no pressure effects.

Facility Name: Omni Waste of Osceola County, LLC	ID #: 0970079
Date: 1/13/08	Sky Conditions: broken
Persons Present: DEP: Allen Rainey (Photographer), Rodell Rice, Caroline Shine, Wanda Parker-Garvin, Golder Associates: Kevin Brown, Don Grigg, Omni: Mike Kaiser	
Digital camera used. Photo files saved at: C:\Documents and Settings\rainey_a\My Documents\My Pictures\Omni Landfill	



Photo 5: Open collection system control panel.

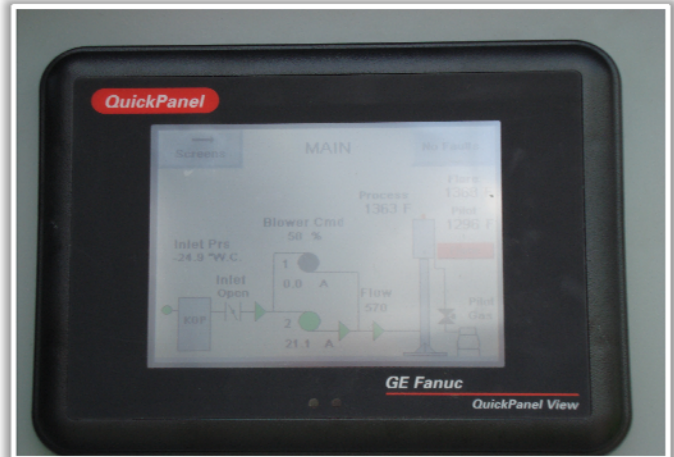


Photo 6: QuickPanel View depicted in photo 5 showing operation of blowers. Blowers operate one at a time. Blower #2 operating at time of inspection.



Photo 7: Display depicted in photo 5 showing -24.8 vacuum and 1365 degree F flare temperature

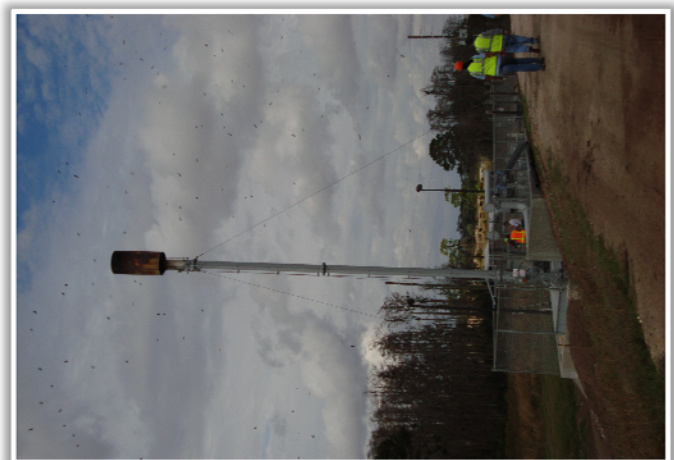


Photo 8: North view of collection and control system.

Facility Name: Omni Waste of Osceola County, LLC	ID #: 0970079
Date: 1/13/08	Sky Conditions: broken
Persons Present: DEP: Allen Rainey (Photographer), Rodell Rice, Caroline Shine, Wanda Parker-Garvin, Golder Associates: Kevin Brown, Don Grigg, Omni: Mike Kaiser	
Digital camera used. Photo files saved at: C:\Documents and Settings\rainey_a\My Documents\My Pictures\Omni Landfill	



Photo 9: Gas collection well #007 in area at final grade. Liner, cover soil and sod is yet to be placed. Pitot tubes are installed in all the wells.



Photo 10: Top of well #007 showing black cover(right) in place that is removed and hanging down in photo 9. Red valve (middle) enables temperature/air adjustments. White connection (left) enables header pressure measurements. This same configuration is used on all gas collection wells.



Photo 11: Top of typical well showing monitoring points (center of photo) located under removed black cover. Liner, cover soil and sod is yet to be placed.



Photo 12: Top of typical well showing temperature point (left), impact point (center) and static vacuum point (right). The thermometer is removable for reading. Liner, cover soil and sod is yet to be placed.

Facility Name: Omni Waste of Osceola County, LLC	ID #: 0970079
Date: 1/13/08	Sky Conditions: broken
Persons Present: DEP: Allen Rainey (Photographer), Rodell Rice, Caroline Shine, Wanda Parker-Garvin, Golder Associates: Kevin Brown, Don Grigg, Omni: Mike Kaiser	
Digital camera used. Photo files saved at: C:\Documents and Settings\rainey_a\My Documents\My Pictures\Omni Landfill	



Photo 13: Black cover over header system measurement point on well. It was explained that birds typically pick off the covers.



Photo 14: North view of a typical well. Gas collection system and flare are in background. Liner, soil and sod yet to be placed.



Photo 15: NNE view of leachate odor control station used before collection and control system became operational.



Photo 16: ENE view of gas isolation valves located near collection system.

Facility Name: Omni Waste of Osceola County, LLC	ID #: 0970079
Date: 1/13/08	Sky Conditions: broken
Persons Present: DEP: Allen Rainey (Photographer), Rodell Rice, Caroline Shine, Wanda Parker-Garvin, Golder Associates: Kevin Brown, Don Grigg, Omni: Mike Kaiser	
Digital camera used. Photo files saved at: C:\Documents and Settings\rainey_a\My Documents\My Pictures\Omni Landfill	



Photo 17: W view of active landfill cell.

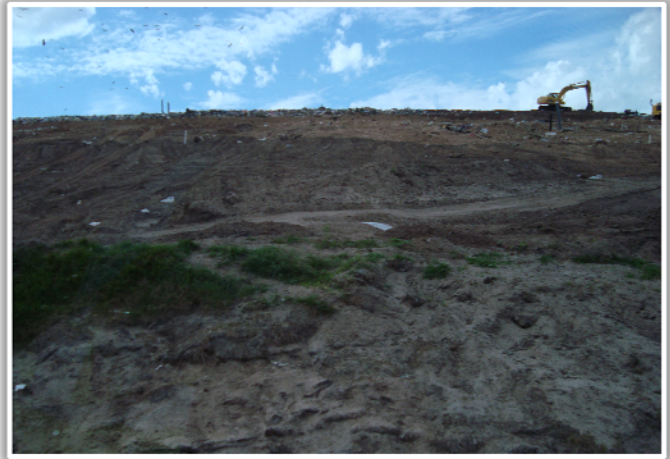


Photo 18: W view of active landfill cell.