

4ANOx 15.5 ppm Status: Ok State: Process On Minute: 15.4 Hour: 17.3	4AWtrFuel 0.9537 Status: Ok State: Process On Minute: 0.9507 Hour: 0.9932	6ANOx 20.5 ppm Status: Ok State: Process On Minute: 20.6 Hour: 20.8	6AWtrFuel 1.1563 Status: Ok State: Process On Minute: 1.1537 Hour: 1.1559	8ANOx -0.4 ppm Status: Ok State: Process Off Minute: -0.4 Hour: -999.9	6ANOxlbhr 20.6 #/hr Status: Ok State: Process On Minute: 20.6 Hour: 21.1	6BNOxlbhr 21.5 #/hr Status: Ok State: Process On Minute: 21.9 Hour: 20.8
4AHITot 178.3 mmbtu Status: Ok State: Process On Minute: 178.4 Hour: 229.4	5ACO2 -0.1 % Status: Ok State: Process Off Minute: -0.1 Hour: -999.9	6AHITot 307.3 mmbtu Status: Ok State: Process On Minute: 306.8 Hour: 307.1	7ACO2 0.0 % Status: Ok State: Process Off Minute: 0.0 Hour: 1.8	8ACO2 0.0 % Status: Ok State: Process Off Minute: 0.0 Hour: -999.9	No Channel	No Channel
4BNOx 15.9 ppm Status: Ok State: Process On Minute: 15.9 Hour: 20.8	4BWtrFuel 0.9421 Status: Ok State: Process On Minute: 0.9361 Hour: 0.9750	6BNOx 21.3 ppm Status: Ok State: Process On Minute: 21.6 Hour: 20.4	6AWtrFuel 1.1563 Status: Ok State: Process On Minute: 1.1537 Hour: 1.1559	8BNOx -0.5 ppm Status: Ok State: Process Off Minute: -0.5 Hour: -999.9	No Channel	No Channel
4BHITot 174.1 mmbtu Status:	5BCO2 0.0 % Status:	6BHITot 303.1 mmbtu Status:	7BCO2 0.0 % Status:	8BCO2 0.0 % Status:	No Channel	No Channel

Average Values Report
Generated: 9/12/2012 13:15

Company: Semiole Electric
Plant: 6697 N. County Road
City/St: Bowling Green , FL 33834
Source: CT1

Period Start: 9/12/2012 08:00
Period End: 9/12/2012 13:15
Validation Type: 1/1 min
Averaging Period: 1 min
Type: Block Avg

Period Start:	Average lGasFlow hscfh	Average lHI_Gas MB/Hr	Average lUnitLoad mw	Average lNOxlbmm lb/mb	Average lNOxCorr15 ppm	Average lNOx ppm	Average lO2 %	Average lNH3Flow gph	Average lCatInTemp DegF
09/12/2012 08:00	11925	1225	100.2	0.029	7.96	8.2	14.82	16.8	602.7
09/12/2012 08:01	12028	1235	100.2	0.029	7.86	8.1	14.82	16.9	603.8
09/12/2012 08:02	11982	1231	99.9	0.029	7.86	8.1	14.82	17.0	605.0
09/12/2012 08:03	12031	1236	100.1	0.029	7.86	8.1	14.82	17.1	606.1
09/12/2012 08:04	11997	1232	100.2	0.029	7.76	8.0	14.82	17.2	606.6
09/12/2012 08:05	12030	1235	100.2	0.028	7.67	7.9	14.82	17.4	607.5
09/12/2012 08:06	12089	1242	100.3	0.028	7.57	7.8	14.82	17.4	608.0
09/12/2012 08:07	11949	1227	100.0	0.028	7.47	7.7	14.82	17.3	609.0
09/12/2012 08:08	11957	1228	100.1	0.027	7.38	7.6	14.82	17.2	609.1
09/12/2012 08:09	11992	1232	100.1	0.027	7.28	7.5	14.82	17.2	609.5
09/12/2012 08:10	11974	1230	100.2	0.027	7.28	7.5	14.82	17.2	610.5
09/12/2012 08:11	12022	1235	100.0	0.027	7.28	7.5	14.82	17.2	610.5
09/12/2012 08:12	11986	1231	99.8	0.027	7.28	7.5	14.82	17.3	611.5
09/12/2012 08:13	11977	1230	100.0	0.027	7.28	7.5	14.82	17.2	612.0
09/12/2012 08:14	12061	1239	100.1	0.027	7.28	7.5	14.82	17.2	612.3
09/12/2012 08:15	11907	1223	100.2	0.027	7.28	7.5	14.82	17.2	613.3
09/12/2012 08:16	12011	1234	100.0	0.027	7.27	7.5	14.81	17.2	613.6
09/12/2012 08:17	12036	1236	100.2	0.027	7.28	7.5	14.82	17.3	614.0
09/12/2012 08:18	11958	1228	100.0	0.027	7.28	7.5	14.82	17.3	614.9
09/12/2012 08:19	11997	1232	100.1	0.027	7.27	7.5	14.81	17.2	615.0
09/12/2012 08:20	11970	1229	100.3	0.027	7.27	7.5	14.81	17.3	615.5
09/12/2012 08:21	11975	1230	100.2	0.027	7.27	7.5	14.81	17.3	615.8
09/12/2012 08:22	11991	1231	100.0	0.027	7.27	7.5	14.81	17.3	616.4
09/12/2012 08:23	12038	1236	100.0	0.027	7.27	7.5	14.81	17.3	616.6
09/12/2012 08:24	11985	1231	100.0	0.027	7.27	7.5	14.81	17.3	617.7
09/12/2012 08:25	12013	1234	100.9	0.027	7.27	7.5	14.81	17.3	618.0
09/12/2012 08:26	12136	1246	101.9	0.027	7.39	7.6	14.83	17.4	618.8
09/12/2012 08:27	12091	1242	100.8	0.026	7.15	7.3	14.88	17.4	619.5
09/12/2012 08:28	11900	1222	98.3	0.025	6.87	7.0	14.89	17.2	620.3
09/12/2012 08:29	11747	1206	97.9	0.025	6.80	6.8	15.00	17.1	620.8
09/12/2012 08:30	11830	1215	98.6	0.025	6.88	6.9	14.98	17.1	621.3
09/12/2012 08:31	11975	1230	100.9	0.026	7.01	7.0	15.01	17.2	622.2
09/12/2012 08:32	12331	1266	103.0	0.026	6.94	7.0	14.95	17.4	622.5
09/12/2012 08:33	12395	1273	105.0	0.025	6.75	6.9	14.87	17.6	622.5
09/12/2012 08:34	12431	1277	105.4	0.025	6.66	6.9	14.79	17.6	622.5
09/12/2012 08:35	12178	1251	102.7	0.024	6.64	6.9	14.77	17.6	622.8
09/12/2012 08:36	11959	1228	100.0	0.024	6.50	6.7	14.82	17.1	622.8
09/12/2012 08:37	11961	1228	100.8	0.024	6.41	6.5	14.92	16.2	623.1
09/12/2012 08:38	12191	1252	102.3	0.025	6.72	6.8	14.93	16.6	623.8

Period Start:	Average lGasFlow hscfh	Average lHI_Gas MB/Hr	Average lUnitLoad mw	Average lNOxlbmm lb/mb	Average lNOxCorr15 ppm	Average lNOx ppm	Average lO2 %	Average lNH3Flow gph	Average lCatInTemp DegF
09/12/2012 08:39	12266	1260	102.8	0.025	6.87	7.0	14.89	17.0	623.8
09/12/2012 08:40	12208	1254	102.6	0.026	6.95	7.1	14.87	17.0	623.7
09/12/2012 08:41	12213	1254	102.7	0.026	6.95	7.1	14.87	17.0	623.5
09/12/2012 08:42	12208	1254	102.8	0.025	6.90	7.1	14.83	17.0	622.8
09/12/2012 08:43	12291	1262	103.2	0.026	7.15	7.4	14.79	17.0	622.9
09/12/2012 08:44	12374	1271	105.2	0.027	7.41	7.7	14.77	17.0	623.0
09/12/2012 08:45	12435	1277	106.3	0.027	7.35	7.6	14.80	17.3	623.9
09/12/2012 08:46	12503	1284	107.1	0.026	7.10	7.4	14.75	17.3	623.7
09/12/2012 08:47	12581	1292	107.7	0.026	7.05	7.4	14.71	17.3	624.0
09/12/2012 08:48	12591	1293	107.3	0.026	6.92	7.3	14.68	17.3	624.0
09/12/2012 08:49	12413	1275	104.6	0.026	6.92	7.3	14.68	17.2	624.0
09/12/2012 08:50	12486	1282	105.1	0.026	6.93	7.2	14.77	17.1	624.1
09/12/2012 08:51	12384	1272	105.1	0.025	6.86	7.1	14.79	17.1	624.8
09/12/2012 08:52	12096	1242	102.3	0.025	6.92	7.2	14.76	17.0	624.9
09/12/2012 08:53	12110	1244	101.5	0.026	6.92	7.1	14.85	17.0	625.3
09/12/2012 08:54	12228	1256	102.6	0.025	6.77	6.9	14.89	16.9	625.5
09/12/2012 08:55	12358	1269	105.2	0.026	6.96	7.1	14.88	17.0	625.5
09/12/2012 08:56	12542	1288	107.0	0.026	6.95	7.2	14.79	17.3	625.5
09/12/2012 08:57	12589	1293	107.4	0.026	6.97	7.3	14.72	17.3	625.5
09/12/2012 08:58	12583	1292	108.0	0.025	6.84	7.2	14.69	17.4	625.5
09/12/2012 08:59	12485	1282	105.7	0.025	6.72	7.1	14.67	17.3	625.5
09/12/2012 09:00	12281	1261	103.5	0.025	6.68	7.0	14.72	17.1	625.5
09/12/2012 09:01	12082	1241	101.2	0.024	6.49	6.7	14.81	16.4	625.5
09/12/2012 09:02	11986	1231	100.4	0.025	6.70	6.9	14.82	16.2	625.5
09/12/2012 09:03	12269	1260	104.0	0.026	6.96	7.1	14.88	16.7	625.5
09/12/2012 09:04	12408	1274	105.5	0.026	7.12	7.3	14.85	16.9	625.5
09/12/2012 09:05	12628	1297	106.9	0.025	6.92	7.2	14.76	16.9	625.3
09/12/2012 09:06	12657	1300	108.5	0.025	6.79	7.1	14.73	17.1	625.0
09/12/2012 09:07	12721	1306	110.0	0.025	6.72	7.1	14.67	17.2	624.9
09/12/2012 09:08	12797	1314	110.2	0.024	6.65	7.1	14.60	17.3	624.7
09/12/2012 09:09	12838	1318	110.1	0.024	6.55	7.0	14.59	17.1	624.8
09/12/2012 09:10	12597	1294	107.1	0.024	6.45	6.9	14.59	15.7	624.7
09/12/2012 09:11	12200	1253	103.7	0.024	6.57	7.0	14.61	15.2	625.4
09/12/2012 09:12	12602	1294	107.3	0.026	6.99	7.3	14.74	16.1	625.5
09/12/2012 09:13	13019	1337	111.9	0.026	6.99	7.3	14.74	16.2	625.9
09/12/2012 09:14	13438	1380	117.1	0.025	6.92	7.4	14.59	14.2	626.5
09/12/2012 09:15	13766	1414	121.5	0.025	6.89	7.4	14.56	13.5	626.8
09/12/2012 09:16	14149	1453	125.7	0.026	7.09	7.6	14.58	15.9	627.1
09/12/2012 09:17	14536	1493	129.5	0.028	7.65	8.3	14.50	17.5	628.0
09/12/2012 09:18	14885	1529	133.7	0.029	8.00	8.8	14.41	17.9	629.5
09/12/2012 09:19	15233	1564	137.6	0.029	7.96	8.8	14.38	18.3	630.7
09/12/2012 09:20	15635	1606	141.7	0.028	7.54	8.4	14.33	18.9	632.1
09/12/2012 09:21	15988	1642	145.5	0.027	7.39	8.3	14.27	19.2	633.7
09/12/2012 09:22	16272	1671	148.6	0.027	7.23	8.2	14.21	19.5	635.6
09/12/2012 09:23	16344	1679	148.7	0.026	6.96	7.9	14.20	19.7	637.9
09/12/2012 09:24	16207	1664	147.7	0.024	6.51	7.4	14.19	19.2	639.8
09/12/2012 09:25	16128	1656	147.6	0.023	6.38	7.2	14.24	18.0	641.8
09/12/2012 09:26	16066	1650	145.8	0.023	6.35	7.2	14.21	17.4	643.4

Period Start:	Average lGasFlow hscfh	Average lHI_Gas MB/Hr	Average lUnitLoad mw	Average lNOxlbmm lb/mb	Average lNOxCorr15 ppm	Average lNOx ppm	Average lO2 %	Average lNH3Flow gph	Average lCatInTemp DegF
09/12/2012 09:27	15939	1637	145.7	0.024	6.48	7.3	14.25	17.0	645.1
09/12/2012 09:28	15894	1632	144.2	0.024	6.63	7.5	14.23	17.3	646.3
09/12/2012 09:29	15871	1630	143.8	0.025	6.75	7.6	14.26	17.6	647.9
09/12/2012 09:30	15789	1622	144.0	0.025	6.91	7.8	14.24	17.5	648.7
09/12/2012 09:31	15596	1602	141.9	0.026	6.99	7.9	14.23	17.5	649.7
09/12/2012 09:32	15146	1555	136.8	0.026	7.02	7.9	14.26	16.9	650.8
09/12/2012 09:33	14792	1519	132.5	0.026	7.03	7.8	14.35	16.6	651.0
09/12/2012 09:34	14413	1480	128.1	0.026	7.15	7.9	14.38	16.5	651.2
09/12/2012 09:35	13900	1428	123.6	0.028	7.50	8.3	14.37	14.8	651.5
09/12/2012 09:36	13641	1401	119.3	0.029	7.75	8.5	14.43	13.0	651.0
09/12/2012 09:37	13235	1359	115.1	0.029	7.78	8.4	14.53	13.8	651.0
09/12/2012 09:38	13039	1339	111.5	0.028	7.72	8.3	14.56	15.5	650.4
09/12/2012 09:39	12992	1334	111.9	0.027	7.41	8.0	14.53	15.8	649.4
09/12/2012 09:40	13095	1345	113.2	0.027	7.24	7.8	14.54	15.1	648.3
09/12/2012 09:41	13316	1368	115.8	0.025	6.80	7.3	14.57	13.9	648.0
09/12/2012 09:42	13239	1360	115.0	0.025	6.83	7.3	14.59	13.9	646.8
09/12/2012 09:43	13016	1337	112.1	0.026	7.13	7.6	14.61	15.2	646.0
09/12/2012 09:44	12819	1317	110.0	0.026	7.06	7.5	14.63	15.8	645.0
09/12/2012 09:45	12791	1314	109.8	0.024	6.64	7.1	14.59	15.8	643.8
09/12/2012 09:46	12860	1321	111.4	0.026	6.98	7.5	14.56	15.9	642.8
09/12/2012 09:47	13094	1345	112.6	0.027	7.20	7.7	14.59	15.5	642.0
09/12/2012 09:48	13089	1344	113.3	0.025	6.79	7.3	14.56	15.2	641.1
09/12/2012 09:49	12980	1333	112.1	0.025	6.89	7.4	14.56	15.3	640.5
09/12/2012 09:50	12760	1310	109.7	0.025	6.90	7.4	14.57	15.8	639.7
09/12/2012 09:51	12727	1307	109.2	0.025	6.74	7.2	14.60	15.8	639.3
09/12/2012 09:52	12769	1311	109.9	0.025	6.79	7.3	14.56	15.9	638.9
09/12/2012 09:53	12857	1320	110.6	0.027	7.20	7.7	14.59	16.0	637.5
09/12/2012 09:54	12881	1323	110.8	0.025	6.74	7.2	14.60	15.9	636.9
09/12/2012 09:55	12944	1329	110.9	0.024	6.55	7.0	14.59	15.9	636.1
09/12/2012 09:56	12827	1317	110.3	0.024	6.52	7.0	14.57	15.8	636.0
09/12/2012 09:57	12600	1294	106.6	0.024	6.58	7.1	14.53	15.5	635.0
09/12/2012 09:58	12485	1282	106.5	0.026	6.93	7.4	14.60	15.5	634.5
09/12/2012 09:59	12592	1293	108.0	0.026	7.05	7.4	14.71	15.6	634.2
09/12/2012 10:00	12682	1302	108.1	0.025	6.65	7.0	14.69	15.7	633.6
09/12/2012 10:01	12647	1299	108.3	0.024	6.63	7.0	14.67	15.8	633.1
09/12/2012 10:02	12703	1305	108.8	0.024	6.62	7.0	14.66	15.8	633.0
09/12/2012 10:03	12777	1312	109.5	0.025	6.79	7.2	14.64	15.8	632.9
09/12/2012 10:04	12853	1320	110.3	0.026	6.97	7.4	14.64	15.7	633.0
09/12/2012 10:05	12891	1324	111.4	0.025	6.69	7.1	14.64	15.9	633.0
09/12/2012 10:06	13178	1353	113.3	0.024	6.65	7.1	14.60	15.4	632.5
09/12/2012 10:07	13441	1380	118.0	0.024	6.51	7.0	14.56	12.9	632.9
09/12/2012 10:08	13685	1405	120.4	0.025	6.79	7.3	14.56	11.8	633.0
09/12/2012 10:09	14058	1444	124.3	0.027	7.46	8.0	14.57	14.1	633.0
09/12/2012 10:10	14402	1479	128.6	0.029	7.97	8.6	14.53	16.7	633.5
09/12/2012 10:11	14816	1522	132.9	0.030	8.21	9.0	14.43	17.2	634.5
09/12/2012 10:12	15208	1562	136.9	0.030	8.22	9.1	14.37	17.4	635.5
09/12/2012 10:13	15500	1592	140.9	0.029	7.98	8.9	14.32	18.0	636.5
09/12/2012 10:14	15749	1617	142.7	0.029	7.82	8.8	14.26	18.4	638.0

Period Start:	Average lGasFlow hscfh	Average lHI_Gas MB/Hr	Average lUnitLoad mw	Average lNOxlbmm lb/mb	Average lNOxCorr15 ppm	Average lNOx ppm	Average lO2 %	Average lNH3Flow gph	Average lCatInTemp DegF
09/12/2012 10:15	15949	1638	144.6	0.028	7.62	8.6	14.24	18.8	639.6
09/12/2012 10:16	15931	1636	145.6	0.028	7.50	8.5	14.21	18.9	641.3
09/12/2012 10:17	16213	1665	148.1	0.027	7.23	8.2	14.21	19.0	643.0
09/12/2012 10:18	16189	1663	147.2	0.026	7.03	8.0	14.19	19.0	644.7
09/12/2012 10:19	15980	1641	145.0	0.025	6.80	7.7	14.22	18.8	646.1
09/12/2012 10:20	16011	1644	145.4	0.025	6.65	7.5	14.25	18.8	647.6
09/12/2012 10:21	15910	1634	144.1	0.025	6.80	7.7	14.22	18.7	649.0
09/12/2012 10:22	15891	1632	144.4	0.025	6.91	7.8	14.24	18.6	650.1
09/12/2012 10:23	15938	1637	144.5	0.025	6.88	7.8	14.21	18.6	651.1
09/12/2012 10:24	16141	1658	147.6	0.025	6.88	7.8	14.21	18.8	652.3
09/12/2012 10:25	16366	1681	150.4	0.026	6.96	7.9	14.20	19.3	653.4
09/12/2012 10:26	16510	1696	151.2	0.025	6.75	7.7	14.17	19.4	654.1
09/12/2012 10:27	16463	1691	150.8	0.023	6.23	7.1	14.18	18.5	655.2
09/12/2012 10:28	16463	1691	150.9	0.022	6.06	6.9	14.18	17.7	655.8
09/12/2012 10:29	16541	1699	152.2	0.023	6.12	7.0	14.15	17.6	657.0
09/12/2012 10:30	16722	1717	152.5	0.023	6.20	7.1	14.14	17.2	657.8
09/12/2012 10:31	16722	1717	152.5	0.022	6.03	6.9	14.15	16.8	658.8
09/12/2012 10:32	16885	1734	153.2	0.023	6.12	7.0	14.15	16.5	659.8
09/12/2012 10:33	16810	1726	153.6	0.023	6.19	7.1	14.13	16.2	660.9
09/12/2012 10:34	16800	1725	153.7	0.023	6.26	7.2	14.11	15.9	661.6
09/12/2012 10:35	16759	1721	153.3	0.023	6.33	7.3	14.10	15.4	663.0
09/12/2012 10:36	16724	1718	152.9	0.024	6.43	7.4	14.11	14.9	663.4
09/12/2012 10:37	16702	1715	152.6	0.024	6.53	7.5	14.12	15.6	664.4
09/12/2012 10:38	16719	1717	152.4	0.025	6.78	7.8	14.11	15.8	665.1
09/12/2012 10:39	16608	1706	151.8	0.025	6.87	7.9	14.12	15.5	666.0
09/12/2012 10:40	16638	1709	152.0	0.025	6.87	7.9	14.12	15.5	666.3
09/12/2012 10:41	16605	1705	151.9	0.026	7.05	8.1	14.12	15.6	667.0
09/12/2012 10:42	16613	1706	152.2	0.026	7.13	8.2	14.11	15.6	667.5
09/12/2012 10:43	16605	1705	151.8	0.026	7.13	8.2	14.11	15.6	668.2
09/12/2012 10:44	16592	1704	151.7	0.027	7.20	8.3	14.10	15.5	668.7
09/12/2012 10:45	16725	1718	152.0	0.027	7.45	8.6	14.09	15.6	669.0
09/12/2012 10:46	16614	1706	151.8	0.027	7.38	8.5	14.10	15.6	669.0
09/12/2012 10:47	16647	1710	152.0	0.027	7.29	8.4	14.10	15.7	669.0
09/12/2012 10:48	16708	1716	152.0	0.027	7.43	8.6	14.07	15.8	669.2
09/12/2012 10:49	16632	1708	151.7	0.027	7.35	8.5	14.08	15.8	669.4
09/12/2012 10:50	16581	1703	151.7	0.026	7.18	8.3	14.08	15.8	669.1
09/12/2012 10:51	16607	1706	152.2	0.026	7.18	8.3	14.08	15.8	669.2
09/12/2012 10:52	16628	1708	151.9	0.027	7.22	8.3	14.12	15.7	669.3
09/12/2012 10:53	16635	1708	151.8	0.026	7.08	8.1	14.15	15.5	669.3
09/12/2012 10:54	16549	1700	151.7	0.027	7.31	8.4	14.12	15.5	669.3
09/12/2012 10:55	16641	1709	151.8	0.028	7.48	8.6	14.12	15.5	669.5
09/12/2012 10:56	16647	1710	152.2	0.028	7.56	8.7	14.11	15.8	669.3
09/12/2012 10:57	16742	1719	153.6	0.028	7.66	8.8	14.12	16.2	669.3
09/12/2012 10:58	16817	1727	152.8	0.028	7.49	8.6	14.13	16.4	669.4
09/12/2012 10:59	16766	1722	153.2	0.026	7.05	8.1	14.12	16.2	669.8
09/12/2012 11:00	16778	1723	153.0	0.026	7.03	8.1	14.10	16.4	669.8
09/12/2012 11:01	16788	1724	153.4	0.026	7.00	8.1	14.07	16.4	669.9
09/12/2012 11:02	16797	1725	153.8	0.025	6.92	8.0	14.08	16.5	670.4

Period Start:	Average lGasFlow hscfh	Average lHI_Gas MB/Hr	Average lUnitLoad mw	Average lNOxlbmm lb/mb	Average lNOxCorr15 ppm	Average lNOx ppm	Average lO2 %	Average lNH3Flow gph	Average lCatInTemp DegF
09/12/2012 11:03	16793	1725	153.7	0.026	6.96	8.0	14.12	16.5	670.5
09/12/2012 11:04	16856	1731	153.9	0.025	6.78	7.8	14.11	16.5	670.5
09/12/2012 11:05	16874	1733	154.1	0.025	6.86	7.9	14.11	16.5	670.5
09/12/2012 11:06	16841	1730	154.8	0.025	6.84	7.9	14.09	16.6	671.5
09/12/2012 11:07	16963	1742	154.5	0.025	6.83	7.9	14.08	16.6	671.4
09/12/2012 11:08	16872	1733	154.6	0.025	6.80	7.9	14.05	16.7	671.9
09/12/2012 11:09	16994	1745	154.6	0.025	6.88	8.0	14.04	16.8	672.0
09/12/2012 11:10	16891	1735	154.1	0.025	6.78	7.9	14.03	16.8	672.0
09/12/2012 11:11	16816	1727	153.4	0.025	6.72	7.8	14.05	16.6	672.3
09/12/2012 11:12	16757	1721	153.2	0.025	6.71	7.8	14.04	16.7	672.7
09/12/2012 11:13	16803	1726	153.0	0.025	6.78	7.9	14.03	16.8	672.7
09/12/2012 11:14	16838	1729	153.5	0.025	6.72	7.8	14.05	16.7	672.8
09/12/2012 11:15	16886	1734	154.6	0.024	6.64	7.7	14.06	16.7	672.9
09/12/2012 11:16	16859	1731	154.0	0.024	6.64	7.7	14.06	16.6	672.8
09/12/2012 11:17	16797	1725	154.2	0.024	6.57	7.6	14.08	16.5	672.7
09/12/2012 11:18	16875	1733	154.0	0.025	6.65	7.7	14.07	16.4	672.7
09/12/2012 11:19	16788	1724	153.6	0.025	6.65	7.7	14.07	16.4	672.5
09/12/2012 11:20	16822	1728	153.6	0.025	6.74	7.8	14.07	16.4	672.3
09/12/2012 11:21	16866	1732	153.6	0.025	6.71	7.8	14.04	16.5	672.5
09/12/2012 11:22	16791	1724	153.6	0.025	6.87	8.0	14.03	16.5	672.3
09/12/2012 11:23	16860	1732	154.0	0.025	6.88	8.0	14.04	16.5	672.0
09/12/2012 11:24	16760	1721	153.9	0.025	6.81	7.9	14.06	16.7	672.2
09/12/2012 11:25	16850	1730	154.1	0.024	6.64	7.7	14.06	16.6	672.0
09/12/2012 11:26	16905	1736	154.1	0.024	6.56	7.6	14.06	16.5	672.0
09/12/2012 11:27	16855	1731	154.1	0.024	6.64	7.7	14.06	16.5	672.1
09/12/2012 11:28	16829	1728	154.0	0.024	6.57	7.6	14.07	16.3	672.5
09/12/2012 11:29	16820	1727	153.7	0.024	6.47	7.5	14.06	15.3	672.5
09/12/2012 11:30	16861	1732	154.4	0.024	6.55	7.6	14.05	16.1	672.9
09/12/2012 11:31	16875	1733	153.9	0.026	6.96	8.1	14.03	16.1	672.9
09/12/2012 11:32	16852	1731	153.9	0.025	6.78	7.9	14.03	16.1	672.8
09/12/2012 11:33	16781	1723	153.8	0.025	6.87	8.0	14.03	16.1	672.9
09/12/2012 11:34	16888	1734	154.0	0.025	6.89	8.0	14.05	16.2	673.1
09/12/2012 11:35	16763	1722	153.6	0.025	6.78	7.9	14.03	16.2	673.1
09/12/2012 11:36	16750	1720	152.9	0.025	6.87	8.0	14.03	16.1	673.0
09/12/2012 11:37	16817	1727	152.9	0.026	6.97	8.1	14.04	16.1	673.5
09/12/2012 11:38	16635	1708	152.4	0.026	6.96	8.1	14.03	16.1	673.4
09/12/2012 11:39	16725	1718	152.5	0.026	6.96	8.1	14.03	16.1	673.5
09/12/2012 11:40	16732	1718	152.4	0.026	6.98	8.1	14.05	16.1	673.5
09/12/2012 11:41	16711	1716	152.0	0.025	6.73	7.8	14.06	16.1	673.4
09/12/2012 11:42	16717	1717	152.5	0.024	6.64	7.7	14.06	16.1	673.5
09/12/2012 11:43	16735	1719	152.7	0.025	6.73	7.8	14.06	16.1	673.3
09/12/2012 11:44	16750	1720	152.5	0.024	6.56	7.6	14.06	15.9	673.3
09/12/2012 11:45	16735	1719	152.3	0.024	6.56	7.6	14.06	15.4	673.3
09/12/2012 11:46	16720	1717	152.7	0.025	6.65	7.7	14.07	15.8	673.3
09/12/2012 11:47	16733	1718	152.1	0.025	6.82	7.9	14.07	15.8	673.2
09/12/2012 11:48	16764	1722	152.6	0.025	6.66	7.7	14.08	15.7	672.6
09/12/2012 11:49	16650	1710	152.4	0.025	6.83	7.9	14.08	15.6	672.7
09/12/2012 11:50	16797	1725	152.3	0.025	6.82	7.9	14.07	15.6	672.5

Period Start:	Average lGasFlow hscfh	Average lHI_Gas MB/Hr	Average lUnitLoad mw	Average lNOxlbmm lb/mb	Average lNOxCorr15 ppm	Average lNOx ppm	Average lO2 %	Average lNH3Flow gph	Average lCatInTemp DegF
09/12/2012 11:51	16724	1718	152.6	0.025	6.81	7.9	14.06	15.7	672.2
09/12/2012 11:52	16744	1720	152.6	0.025	6.91	8.0	14.07	15.7	672.1
09/12/2012 11:53	16675	1713	152.4	0.025	6.74	7.8	14.07	15.6	672.0
09/12/2012 11:54	16830	1728	152.6	0.025	6.87	8.0	14.03	15.8	672.0
09/12/2012 11:55	16732	1718	152.4	0.026	7.04	8.2	14.03	15.8	672.0
09/12/2012 11:56	16750	1720	152.4	0.025	6.80	7.9	14.05	15.7	672.0
09/12/2012 11:57	16692	1714	152.4	0.025	6.72	7.8	14.05	15.7	672.1
09/12/2012 11:58	16722	1717	152.3	0.025	6.74	7.8	14.07	15.6	672.5
09/12/2012 11:59	16696	1715	153.0	0.025	6.81	7.9	14.06	15.6	672.5
09/12/2012 12:00	16738	1719	152.6	0.025	6.90	8.0	14.06	15.7	672.6
09/12/2012 12:01	16778	1723	152.4	0.025	6.90	8.0	14.06	15.6	672.9
09/12/2012 12:02	16746	1720	152.8	0.026	7.14	8.3	14.04	15.7	672.9
09/12/2012 12:03	16738	1719	152.5	0.026	7.14	8.3	14.04	15.7	673.2
09/12/2012 12:04	16725	1718	153.2	0.026	7.04	8.2	14.03	15.8	672.9
09/12/2012 12:05	16713	1716	152.7	0.026	7.16	8.3	14.06	15.8	673.0
09/12/2012 12:06	16653	1710	152.1	0.025	6.80	7.9	14.05	15.6	673.2
09/12/2012 12:07	16713	1716	152.7	0.026	6.96	8.1	14.03	15.7	673.5
09/12/2012 12:08	16699	1715	152.6	0.026	7.13	8.3	14.03	15.7	673.5
09/12/2012 12:09	16703	1715	152.7	0.025	6.89	8.0	14.05	15.7	673.5
09/12/2012 12:10	16641	1709	152.7	0.025	6.91	8.0	14.07	15.6	673.5
09/12/2012 12:11	16816	1727	152.9	0.025	6.91	8.0	14.07	15.6	673.4
09/12/2012 12:12	16747	1720	152.7	0.025	6.91	8.0	14.07	15.5	673.2
09/12/2012 12:13	16769	1722	152.5	0.025	6.81	7.9	14.06	15.6	673.2
09/12/2012 12:14	16631	1708	152.6	0.025	6.91	8.0	14.07	15.6	673.2
09/12/2012 12:15	16685	1714	152.3	0.025	6.91	8.0	14.07	15.6	672.9
09/12/2012 12:16	16771	1722	152.8	0.025	6.81	7.9	14.06	15.6	672.4
09/12/2012 12:17	16699	1715	153.0	0.025	6.91	8.0	14.07	15.7	672.2
09/12/2012 12:18	16725	1718	152.7	0.025	6.91	8.0	14.07	15.7	672.1
09/12/2012 12:19	16777	1723	152.7	0.025	6.82	7.9	14.07	15.6	672.0
09/12/2012 12:20	16828	1728	152.9	0.025	6.91	8.0	14.07	15.6	672.0
09/12/2012 12:21	16797	1725	152.8	0.025	6.91	8.0	14.07	15.6	672.0
09/12/2012 12:22	16786	1724	152.3	0.025	6.91	8.0	14.07	15.6	672.0
09/12/2012 12:23	16753	1721	152.5	0.026	7.16	8.3	14.06	15.6	672.0
09/12/2012 12:24	16782	1724	153.0	0.027	7.21	8.4	14.03	15.8	672.0
09/12/2012 12:25	16694	1714	152.9	0.027	7.25	8.4	14.06	15.8	672.0
09/12/2012 12:26	16710	1716	152.9	0.026	6.99	8.1	14.06	15.8	672.5
09/12/2012 12:27	16805	1726	152.9	0.026	6.99	8.1	14.06	15.8	672.5
09/12/2012 12:28	16622	1707	152.3	0.026	7.07	8.2	14.06	15.7	672.9
09/12/2012 12:29	16670	1712	152.3	0.026	6.97	8.1	14.04	15.6	673.2
09/12/2012 12:30	16742	1719	152.1	0.026	7.16	8.3	14.06	15.7	673.2
09/12/2012 12:31	16730	1718	152.6	0.026	7.16	8.3	14.06	15.8	673.1
09/12/2012 12:32	16803	1726	152.9	0.026	7.08	8.2	14.07	15.7	673.5
09/12/2012 12:33	16760	1721	152.4	0.026	7.09	8.2	14.08	15.5	673.5
09/12/2012 12:34	16680	1713	152.4	0.026	7.07	8.2	14.06	15.6	673.5
09/12/2012 12:35	16709	1716	152.4	0.026	7.16	8.3	14.06	15.6	673.5
09/12/2012 12:36	16705	1716	152.7	0.027	7.25	8.4	14.06	15.7	673.5
09/12/2012 12:37	16613	1706	152.3	0.027	7.25	8.4	14.06	15.6	673.5
09/12/2012 12:38	16769	1722	152.6	0.027	7.25	8.4	14.06	15.6	673.5

Period Start:	Average 1GasFlow hscfh	Average 1HI_Gas MB/Hr	Average 1UnitLoad mw	Average 1NOx1bmm lb/mb	Average 1NOxCorr15 ppm	Average 1NOx ppm	Average 1O2 %	Average 1NH3Flow gph	Average 1CatInTemp DegF
09/12/2012 12:39	16706	1716	152.4	0.027	7.25	8.4	14.06	15.7	673.5
09/12/2012 12:40	16772	1722	152.5	0.027	7.25	8.4	14.06	15.8	672.9
09/12/2012 12:41	16731	1718	152.4	0.026	7.14	8.3	14.04	15.8	673.2
09/12/2012 12:42	16588	1704	152.2	0.026	7.14	8.3	14.04	15.8	673.2
09/12/2012 12:43	16772	1722	152.6	0.026	6.97	8.1	14.04	15.7	673.3
09/12/2012 12:44	16683	1713	152.7	0.026	7.06	8.2	14.05	15.7	673.2
09/12/2012 12:45	16733	1718	152.6	0.026	7.07	8.2	14.06	15.7	672.9
09/12/2012 12:46	16718	1717	152.6	0.026	6.98	8.1	14.05	15.6	672.3
09/12/2012 12:47	16816	1727	152.0	0.025	6.91	8.0	14.07	15.6	672.3
09/12/2012 12:48	16685	1714	152.5	0.025	6.90	8.0	14.06	15.6	672.0
09/12/2012 12:49	16712	1716	152.5	0.026	6.99	8.1	14.06	15.6	672.0
09/12/2012 12:50	16710	1716	152.6	0.026	6.99	8.1	14.06	15.6	672.0
09/12/2012 12:51	16694	1714	152.3	0.026	7.00	8.1	14.07	15.6	672.1
09/12/2012 12:52	16669	1712	152.7	0.026	7.06	8.2	14.05	15.7	672.1
09/12/2012 12:53	16764	1722	152.8	0.026	7.06	8.2	14.05	15.7	672.4
09/12/2012 12:54	16653	1710	152.8	0.026	7.07	8.2	14.06	15.6	672.8
09/12/2012 12:55	16727	1718	152.6	0.025	6.85	7.9	14.10	15.4	672.6
09/12/2012 12:56	16649	1710	152.2	0.025	6.85	7.9	14.10	15.4	673.0
09/12/2012 12:57	16738	1719	152.4	0.025	6.92	8.0	14.08	15.5	673.1
09/12/2012 12:58	16747	1720	152.8	0.026	7.18	8.3	14.08	15.4	672.9
09/12/2012 12:59	16710	1716	152.1	0.026	7.17	8.3	14.07	15.4	672.9
09/12/2012 13:00	16730	1718	152.4	0.027	7.26	8.4	14.07	15.4	673.0
09/12/2012 13:01	16710	1716	153.0	0.027	7.33	8.5	14.06	15.5	673.2
09/12/2012 13:02	16663	1711	152.8	0.027	7.42	8.6	14.06	15.6	673.0
09/12/2012 13:03	16709	1716	152.6	0.027	7.25	8.4	14.06	15.5	673.4
09/12/2012 13:04	16703	1715	152.6	0.027	7.33	8.5	14.06	15.5	673.5
09/12/2012 13:05	16694	1714	153.0	0.027	7.33	8.5	14.06	15.6	673.5
09/12/2012 13:06	16789	1724	152.8	0.027	7.39	8.6	14.03	15.6	673.5
09/12/2012 13:07	16672	1712	153.1	0.027	7.39	8.6	14.03	15.8	673.5
09/12/2012 13:08	16696	1715	152.8	0.027	7.31	8.5	14.04	15.8	673.5
09/12/2012 13:09	16707	1716	152.8	0.026	7.16	8.3	14.06	15.8	673.5
09/12/2012 13:10	16716	1717	152.9	0.026	7.07	8.2	14.06	15.8	673.5
09/12/2012 13:11	16700	1715	152.8	0.026	6.99	8.1	14.06	15.8	673.5
09/12/2012 13:12	16716	1717	152.5	0.026	7.01	8.1	14.08	15.8	673.4
09/12/2012 13:13	16706	1716	151.7	0.025	6.82	7.9	14.07	15.6	673.4
09/12/2012 13:14	16711	1716	152.2	0.025	6.90	8.0	14.06	15.6	673.2
09/12/2012 13:15	N/A	N/A	N/A	N/A	N/A	N/A	N/A	N/A	N/A
Daily Average*	15117	1553	135.1	0.026	6.99	7.8	14.33	16.3	652.0
Maximum*	16994	1745	154.8	0.030	8.22	9.1	15.01	19.7	673.5
	09/12/2012	09/12/2012	09/12/2012	09/12/2012	09/12/2012	09/12/2012	09/12/2012	09/12/2012	09/12/2012
	11:09	11:09	11:06	10:12	10:12	10:12	8:31	9:23	13:11
Minimum*	11747	1206	97.9	0.022	6.03	6.5	14.03	11.8	602.7
	09/12/2012	09/12/2012	09/12/2012	09/12/2012	09/12/2012	09/12/2012	09/12/2012	09/12/2012	09/12/2012
	8:29	8:29	8:29	10:31	10:31	8:37	13:07	10:08	8:00

* Does not include Invalid Averaging Periods ("N/A")

Average Values Report
Generated: 9/12/2012 13:16

Company: Semiole Electric
Plant: 6697 N. County Road
City/St: Bowling Green , FL 33834
Source: CT2

Period Start: 9/12/2012 08:00
Period End: 9/12/2012 13:15
Validation Type: 1/1 min
Averaging Period: 1 min
Type: Block Avg

Period Start:	Average 2GasFlow hscfh	Average 2HI_Gas MB/Hr	Average 2UnitLoad mw	Average 2NOxlbmm lb/mb	Average 2NOxCorr15 ppm	Average 2NOx ppm	Average 2O2 %	Average 2NH3Flow gph	Average 2CatInTemp DegF
09/12/2012 08:00	12070	1240	100.1	0.025	6.85	7.0	14.87	10.9	622.4
09/12/2012 08:01	12069	1239	100.3	0.025	6.83	7.0	14.85	10.9	622.0
09/12/2012 08:02	12032	1236	99.9	0.025	6.83	7.0	14.85	10.8	621.8
09/12/2012 08:03	12117	1244	100.2	0.025	6.85	7.0	14.87	10.8	621.3
09/12/2012 08:04	12153	1248	100.4	0.025	6.84	7.0	14.86	10.8	621.2
09/12/2012 08:05	12177	1251	100.4	0.025	6.83	7.0	14.85	10.7	621.1
09/12/2012 08:06	12160	1249	100.3	0.025	6.83	7.0	14.85	10.7	621.3
09/12/2012 08:07	12010	1233	100.1	0.025	6.83	7.0	14.85	10.8	621.3
09/12/2012 08:08	12124	1245	100.3	0.025	6.84	7.0	14.86	10.7	621.3
09/12/2012 08:09	12080	1241	100.3	0.025	6.83	7.0	14.85	10.7	621.2
09/12/2012 08:10	12133	1246	100.1	0.025	6.83	7.0	14.85	10.7	621.3
09/12/2012 08:11	12030	1235	100.3	0.025	6.84	7.0	14.86	10.7	621.5
09/12/2012 08:12	12111	1244	100.1	0.025	6.84	7.0	14.86	10.7	621.1
09/12/2012 08:13	12142	1247	100.0	0.025	6.83	7.0	14.85	10.6	621.5
09/12/2012 08:14	12166	1249	100.3	0.026	6.92	7.1	14.85	10.6	621.5
09/12/2012 08:15	12043	1237	100.2	0.025	6.91	7.1	14.84	10.6	621.3
09/12/2012 08:16	12114	1244	100.2	0.025	6.91	7.1	14.84	10.6	621.4
09/12/2012 08:17	12138	1247	100.2	0.025	6.83	7.0	14.85	10.6	621.3
09/12/2012 08:18	12036	1236	100.1	0.025	6.83	7.0	14.85	10.5	621.4
09/12/2012 08:19	12108	1243	100.2	0.025	6.83	7.0	14.85	10.5	621.3
09/12/2012 08:20	12095	1242	100.1	0.025	6.82	7.0	14.84	10.5	621.0
09/12/2012 08:21	12105	1243	100.2	0.025	6.83	7.0	14.85	10.5	621.0
09/12/2012 08:22	12050	1238	100.1	0.025	6.82	7.0	14.84	10.5	621.0
09/12/2012 08:23	12132	1246	100.2	0.025	6.82	7.0	14.84	10.5	621.0
09/12/2012 08:24	12031	1236	99.8	0.025	6.83	7.0	14.85	10.5	620.7
09/12/2012 08:25	12100	1243	100.8	0.025	6.83	7.0	14.85	10.4	620.4
09/12/2012 08:26	12283	1261	102.0	0.026	6.97	7.1	14.89	10.5	621.0
09/12/2012 08:27	12183	1251	101.0	0.025	6.81	6.9	14.92	10.5	621.0
09/12/2012 08:28	11983	1231	98.1	0.025	6.65	6.7	14.96	10.4	621.5
09/12/2012 08:29	11920	1224	97.8	0.025	6.71	6.7	15.01	10.3	622.5
09/12/2012 08:30	11924	1225	98.7	0.025	6.85	6.9	14.96	10.3	622.5
09/12/2012 08:31	12092	1242	100.9	0.026	7.08	7.1	14.98	10.3	622.7
09/12/2012 08:32	12386	1272	103.5	0.026	7.03	7.1	14.94	10.3	623.2
09/12/2012 08:33	12466	1280	105.5	0.025	6.77	6.9	14.89	10.4	623.3
09/12/2012 08:34	12570	1291	105.9	0.025	6.65	6.8	14.87	10.5	622.9
09/12/2012 08:35	12353	1269	102.8	0.023	6.26	6.4	14.87	9.8	623.0
09/12/2012 08:36	12099	1243	100.1	0.023	6.25	6.3	14.95	8.9	623.6
09/12/2012 08:37	12086	1241	100.6	0.025	6.65	6.7	14.96	8.8	624.0
09/12/2012 08:38	12205	1253	102.4	0.027	7.24	7.3	14.95	9.1	624.0

Period Start:	Average 2GasFlow hscfh	Average 2HI_Gas MB/Hr	Average 2UnitLoad mw	Average 2NOxlbmm lb/mb	Average 2NOxCorr15 ppm	Average 2NOx ppm	Average 2O2 %	Average 2NH3Flow gph	Average 2CatInTemp DegF
09/12/2012 08:39	12335	1267	102.8	0.028	7.51	7.6	14.93	9.3	624.0
09/12/2012 08:40	12277	1261	102.8	0.027	7.31	7.4	14.93	9.4	624.0
09/12/2012 08:41	12278	1261	103.0	0.027	7.20	7.3	14.92	9.4	624.0
09/12/2012 08:42	12278	1261	103.2	0.026	7.17	7.3	14.89	9.3	623.9
09/12/2012 08:43	12349	1268	103.1	0.027	7.22	7.4	14.85	9.3	623.4
09/12/2012 08:44	12474	1281	104.7	0.027	7.33	7.5	14.86	9.3	622.8
09/12/2012 08:45	12513	1285	106.8	0.027	7.34	7.5	14.87	9.4	622.7
09/12/2012 08:46	12645	1299	107.2	0.026	7.12	7.3	14.85	9.5	622.5
09/12/2012 08:47	12699	1304	107.9	0.025	6.89	7.1	14.82	9.6	622.5
09/12/2012 08:48	12631	1297	107.2	0.025	6.78	7.0	14.81	9.5	622.6
09/12/2012 08:49	12425	1276	104.4	0.024	6.62	6.8	14.84	9.4	623.4
09/12/2012 08:50	12469	1281	105.2	0.025	6.79	6.9	14.90	9.3	623.5
09/12/2012 08:51	12535	1287	104.9	0.026	7.07	7.2	14.89	9.3	624.0
09/12/2012 08:52	12244	1257	102.2	0.026	7.08	7.2	14.90	9.2	624.0
09/12/2012 08:53	12160	1249	101.5	0.026	7.16	7.2	14.97	9.1	624.2
09/12/2012 08:54	12310	1264	102.7	0.027	7.33	7.4	14.94	9.1	624.7
09/12/2012 08:55	12394	1273	104.9	0.028	7.60	7.7	14.92	9.4	624.8
09/12/2012 08:56	12619	1296	107.0	0.027	7.42	7.6	14.86	9.5	624.8
09/12/2012 08:57	12666	1301	107.5	0.026	7.10	7.3	14.83	9.5	624.7
09/12/2012 08:58	12661	1300	108.0	0.025	6.79	7.0	14.82	9.5	624.3
09/12/2012 08:59	12525	1286	105.5	0.025	6.70	6.9	14.82	9.5	624.5
09/12/2012 09:00	12330	1266	103.5	0.024	6.61	6.7	14.92	9.3	624.3
09/12/2012 09:01	12134	1246	101.2	0.025	6.89	7.0	14.91	9.3	624.2
09/12/2012 09:02	12022	1235	100.4	0.027	7.28	7.4	14.90	9.0	624.3
09/12/2012 09:03	12354	1269	103.9	0.028	7.60	7.7	14.92	9.1	624.4
09/12/2012 09:04	12461	1280	105.5	0.029	7.84	8.0	14.88	9.4	624.0
09/12/2012 09:05	12647	1299	106.5	0.027	7.41	7.6	14.85	9.6	624.0
09/12/2012 09:06	12744	1309	108.6	0.026	7.08	7.3	14.82	9.5	624.0
09/12/2012 09:07	12878	1323	110.1	0.025	6.88	7.1	14.81	9.2	624.0
09/12/2012 09:08	12897	1325	110.2	0.024	6.58	6.8	14.80	8.9	624.0
09/12/2012 09:09	12886	1323	109.6	0.025	6.70	6.9	14.82	9.0	624.0
09/12/2012 09:10	12599	1294	107.0	0.025	6.87	7.1	14.80	9.4	624.1
09/12/2012 09:11	12275	1261	103.8	0.026	6.96	7.2	14.80	9.3	624.4
09/12/2012 09:12	12685	1303	107.2	0.026	7.14	7.3	14.87	9.2	624.7
09/12/2012 09:13	13110	1346	112.2	0.027	7.38	7.6	14.82	8.4	624.8
09/12/2012 09:14	13432	1379	117.2	0.026	7.06	7.3	14.80	6.8	624.8
09/12/2012 09:15	13822	1420	121.5	0.027	7.31	7.6	14.77	8.0	625.4
09/12/2012 09:16	14169	1455	125.6	0.030	8.22	8.6	14.73	9.7	625.6
09/12/2012 09:17	14577	1497	129.2	0.030	8.08	8.5	14.69	10.3	626.6
09/12/2012 09:18	14906	1531	133.5	0.027	7.34	7.8	14.63	10.6	627.1
09/12/2012 09:19	15275	1569	137.5	0.027	7.27	7.8	14.57	10.9	628.2
09/12/2012 09:20	15750	1618	142.0	0.026	7.04	7.6	14.53	11.1	629.5
09/12/2012 09:21	16085	1652	145.8	0.026	7.05	7.7	14.46	11.5	630.6
09/12/2012 09:22	16414	1686	148.9	0.025	6.86	7.6	14.36	11.8	632.3
09/12/2012 09:23	16385	1683	148.4	0.024	6.59	7.4	14.27	12.0	633.9
09/12/2012 09:24	16227	1667	147.8	0.024	6.50	7.3	14.27	12.1	635.8
09/12/2012 09:25	16180	1662	147.4	0.024	6.46	7.2	14.32	12.4	637.6
09/12/2012 09:26	16066	1650	146.0	0.023	6.38	7.1	14.33	11.8	639.6

Period Start:	Average 2GasFlow hscfh	Average 2HI_Gas MB/Hr	Average 2UnitLoad mw	Average 2NOxlbmm lb/mb	Average 2NOxCorr15 ppm	Average 2NOx ppm	Average 2O2 %	Average 2NH3Flow gph	Average 2CatInTemp DegF
09/12/2012 09:27	16088	1652	145.6	0.023	6.32	7.0	14.37	10.7	641.6
09/12/2012 09:28	15988	1642	144.2	0.024	6.50	7.2	14.36	9.8	643.1
09/12/2012 09:29	15931	1636	144.1	0.024	6.64	7.3	14.41	10.0	644.6
09/12/2012 09:30	15964	1640	144.0	0.025	6.90	7.6	14.40	10.1	645.9
09/12/2012 09:31	15806	1623	141.9	0.026	7.07	7.8	14.39	10.1	647.1
09/12/2012 09:32	15239	1565	137.3	0.026	7.13	7.8	14.45	9.7	648.0
09/12/2012 09:33	14831	1523	131.9	0.027	7.32	7.9	14.53	9.1	648.3
09/12/2012 09:34	14450	1484	127.6	0.027	7.44	8.0	14.56	8.7	648.8
09/12/2012 09:35	13997	1437	123.5	0.029	7.88	8.4	14.61	8.8	648.3
09/12/2012 09:36	13566	1393	118.9	0.030	8.14	8.6	14.67	6.9	648.0
09/12/2012 09:37	13332	1369	115.0	0.030	8.10	8.5	14.71	5.0	648.0
09/12/2012 09:38	13096	1345	112.4	0.032	8.62	9.0	14.74	6.2	646.8
09/12/2012 09:39	13002	1335	112.1	0.035	9.40	9.8	14.75	7.7	645.8
09/12/2012 09:40	13203	1356	113.4	0.033	9.00	9.4	14.74	8.0	644.8
09/12/2012 09:41	13305	1366	116.0	0.031	8.30	8.6	14.79	6.9	643.6
09/12/2012 09:42	13314	1367	115.1	0.030	8.12	8.4	14.80	6.3	642.1
09/12/2012 09:43	13005	1336	112.1	0.032	8.65	8.9	14.83	8.0	641.7
09/12/2012 09:44	12905	1325	109.8	0.033	9.04	9.3	14.83	10.1	640.4
09/12/2012 09:45	12955	1330	110.0	0.030	8.07	8.4	14.76	10.5	639.3
09/12/2012 09:46	12907	1326	111.1	0.026	7.04	7.4	14.70	9.7	638.3
09/12/2012 09:47	13169	1352	113.1	0.026	6.96	7.2	14.80	8.8	637.6
09/12/2012 09:48	13116	1347	112.9	0.025	6.84	7.1	14.78	8.4	636.7
09/12/2012 09:49	13119	1347	111.8	0.027	7.40	7.7	14.76	8.4	636.1
09/12/2012 09:50	12853	1320	109.8	0.029	7.74	8.0	14.80	9.6	636.0
09/12/2012 09:51	12797	1314	109.7	0.028	7.69	8.0	14.76	10.2	635.3
09/12/2012 09:52	12877	1322	110.3	0.027	7.23	7.6	14.70	10.0	634.4
09/12/2012 09:53	12886	1323	111.1	0.026	7.05	7.3	14.79	9.7	633.9
09/12/2012 09:54	12964	1331	110.9	0.025	6.78	7.0	14.81	9.4	633.7
09/12/2012 09:55	13019	1337	111.0	0.026	7.07	7.3	14.81	9.3	633.3
09/12/2012 09:56	12891	1324	110.4	0.026	7.13	7.4	14.78	9.4	633.0
09/12/2012 09:57	12667	1301	106.9	0.027	7.20	7.5	14.75	10.1	632.1
09/12/2012 09:58	12606	1295	106.5	0.027	7.33	7.6	14.78	10.3	631.6
09/12/2012 09:59	12692	1303	108.2	0.026	7.19	7.4	14.83	10.3	631.5
09/12/2012 10:00	12788	1313	108.6	0.025	6.88	7.1	14.81	10.4	630.8
09/12/2012 10:01	12724	1307	108.6	0.024	6.49	6.7	14.81	10.1	630.5
09/12/2012 10:02	12819	1317	109.0	0.024	6.48	6.7	14.80	9.1	630.1
09/12/2012 10:03	12833	1318	109.4	0.024	6.54	6.8	14.77	8.6	630.0
09/12/2012 10:04	12844	1319	110.3	0.026	7.17	7.4	14.81	8.8	629.5
09/12/2012 10:05	12938	1329	111.4	0.027	7.36	7.6	14.81	8.4	629.5
09/12/2012 10:06	13231	1359	113.7	0.027	7.36	7.6	14.81	7.7	629.5
09/12/2012 10:07	13541	1391	118.7	0.028	7.51	7.8	14.77	6.8	629.8
09/12/2012 10:08	13841	1421	120.1	0.030	8.06	8.4	14.75	7.7	629.9
09/12/2012 10:09	14091	1447	124.5	0.032	8.74	9.1	14.76	10.0	630.0
09/12/2012 10:10	14400	1479	128.3	0.031	8.37	8.8	14.70	10.7	630.2
09/12/2012 10:11	14822	1522	132.7	0.028	7.62	8.1	14.63	11.1	630.7
09/12/2012 10:12	15238	1565	137.0	0.027	7.26	7.8	14.56	11.3	631.5
09/12/2012 10:13	15541	1596	140.8	0.027	7.31	7.9	14.52	11.5	632.5
09/12/2012 10:14	15835	1626	142.7	0.027	7.24	7.9	14.46	11.8	633.8

Period Start:	Average 2GasFlow hscfh	Average 2HI_Gas MB/Hr	Average 2UnitLoad mw	Average 2NOxlbmm lb/mb	Average 2NOxCorr15 ppm	Average 2NOx ppm	Average 2O2 %	Average 2NH3Flow gph	Average 2CatInTemp DegF
09/12/2012 10:15	16044	1648	144.8	0.026	7.10	7.8	14.42	12.0	635.5
09/12/2012 10:16	16125	1656	145.9	0.025	6.88	7.6	14.38	12.3	637.1
09/12/2012 10:17	16291	1673	148.2	0.024	6.56	7.3	14.33	12.5	638.7
09/12/2012 10:18	16208	1665	146.8	0.024	6.53	7.3	14.30	12.6	640.1
09/12/2012 10:19	15981	1641	144.8	0.024	6.39	7.1	14.34	12.3	641.9
09/12/2012 10:20	16114	1655	145.6	0.023	6.33	7.0	14.38	11.7	643.0
09/12/2012 10:21	15906	1634	144.2	0.024	6.40	7.1	14.35	11.1	644.6
09/12/2012 10:22	16030	1646	145.2	0.024	6.62	7.3	14.39	10.9	645.8
09/12/2012 10:23	15978	1641	144.4	0.025	6.68	7.4	14.36	11.0	647.0
09/12/2012 10:24	16172	1661	147.6	0.025	6.78	7.5	14.37	11.1	648.0
09/12/2012 10:25	16495	1694	150.1	0.025	6.76	7.6	14.27	11.4	649.0
09/12/2012 10:26	16450	1689	150.8	0.025	6.67	7.6	14.18	11.8	649.8
09/12/2012 10:27	16536	1698	150.5	0.024	6.52	7.4	14.20	12.3	651.1
09/12/2012 10:28	16528	1697	150.8	0.024	6.50	7.4	14.18	12.1	652.3
09/12/2012 10:29	16635	1708	152.1	0.023	6.36	7.3	14.13	11.6	653.8
09/12/2012 10:30	16600	1705	151.6	0.024	6.49	7.5	14.08	11.1	654.3
09/12/2012 10:31	16722	1717	152.2	0.025	6.83	7.9	14.08	11.3	655.5
09/12/2012 10:32	16838	1729	153.5	0.025	6.92	8.0	14.08	11.6	656.7
09/12/2012 10:33	16852	1731	153.0	0.026	7.03	8.2	14.02	11.7	657.5
09/12/2012 10:34	16825	1728	153.6	0.028	7.55	8.8	14.02	11.9	658.4
09/12/2012 10:35	16775	1723	153.0	0.028	7.49	8.7	14.05	12.1	659.3
09/12/2012 10:36	16777	1723	153.0	0.027	7.42	8.6	14.06	11.9	659.8
09/12/2012 10:37	16752	1720	152.5	0.026	7.17	8.3	14.07	11.5	660.5
09/12/2012 10:38	16742	1719	152.2	0.026	7.01	8.1	14.08	11.5	661.5
09/12/2012 10:39	16600	1705	151.8	0.026	7.02	8.1	14.09	11.4	662.0
09/12/2012 10:40	16671	1712	151.8	0.026	7.02	8.1	14.09	11.3	662.4
09/12/2012 10:41	16644	1709	151.9	0.026	6.93	8.0	14.09	11.3	663.0
09/12/2012 10:42	16699	1715	152.1	0.026	6.93	8.0	14.09	11.3	663.0
09/12/2012 10:43	16764	1722	152.2	0.025	6.91	8.0	14.07	11.3	663.0
09/12/2012 10:44	16625	1707	151.7	0.026	7.09	8.2	14.08	11.2	663.0
09/12/2012 10:45	16747	1720	152.0	0.026	7.17	8.3	14.07	11.2	663.0
09/12/2012 10:46	16727	1718	151.8	0.027	7.26	8.4	14.07	11.3	663.3
09/12/2012 10:47	16716	1717	152.2	0.027	7.25	8.4	14.06	11.3	663.5
09/12/2012 10:48	16675	1713	151.8	0.027	7.33	8.5	14.06	11.3	663.8
09/12/2012 10:49	16582	1703	151.3	0.027	7.35	8.5	14.08	11.2	664.0
09/12/2012 10:50	16725	1718	151.5	0.026	7.17	8.3	14.07	11.3	664.5
09/12/2012 10:51	16667	1712	152.3	0.027	7.42	8.6	14.06	11.4	664.5
09/12/2012 10:52	16682	1713	151.9	0.028	7.56	8.7	14.11	11.5	664.5
09/12/2012 10:53	16638	1709	151.7	0.028	7.47	8.6	14.11	11.4	664.5
09/12/2012 10:54	16682	1713	151.7	0.027	7.45	8.6	14.09	11.4	665.2
09/12/2012 10:55	16654	1710	151.4	0.028	7.62	8.8	14.09	11.6	665.7
09/12/2012 10:56	16652	1710	152.2	0.028	7.61	8.8	14.08	11.6	665.8
09/12/2012 10:57	16771	1722	153.1	0.028	7.61	8.8	14.08	11.8	665.5
09/12/2012 10:58	16783	1724	152.1	0.028	7.65	8.9	14.04	11.9	665.8
09/12/2012 10:59	16782	1724	152.7	0.028	7.59	8.8	14.06	12.1	665.8
09/12/2012 11:00	16702	1715	152.2	0.027	7.40	8.6	14.04	12.0	665.4
09/12/2012 11:01	16749	1720	151.6	0.027	7.40	8.6	14.04	11.9	666.0
09/12/2012 11:02	16699	1715	152.0	0.027	7.33	8.5	14.06	11.8	665.3

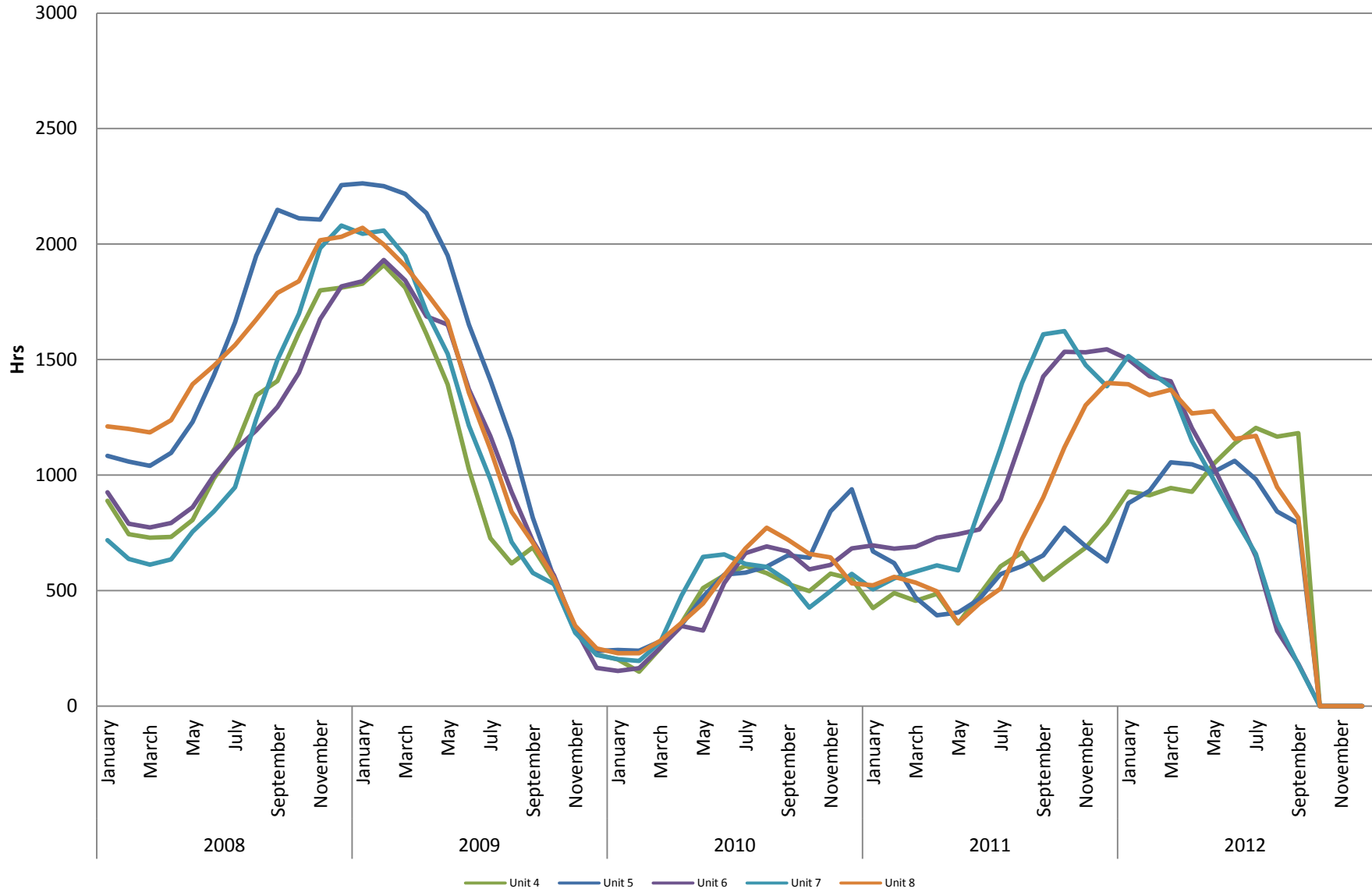
Period Start:	Average 2GasFlow hscfh	Average 2HI_Gas MB/Hr	Average 2UnitLoad mw	Average 2NOxlbmm lb/mb	Average 2NOxCorr15 ppm	Average 2NOx ppm	Average 2O2 %	Average 2NH3Flow gph	Average 2CatInTemp DegF
09/12/2012 11:03	16797	1725	152.3	0.027	7.35	8.5	14.08	11.8	665.9
09/12/2012 11:04	16727	1718	152.1	0.027	7.42	8.6	14.06	11.8	665.7
09/12/2012 11:05	16686	1714	152.9	0.028	7.50	8.7	14.06	12.0	665.8
09/12/2012 11:06	16752	1720	153.1	0.028	7.59	8.8	14.06	12.1	666.0
09/12/2012 11:07	16766	1722	153.0	0.028	7.59	8.8	14.06	12.3	666.0
09/12/2012 11:08	16696	1715	152.3	0.028	7.58	8.8	14.05	12.3	666.0
09/12/2012 11:09	16750	1720	152.2	0.028	7.50	8.7	14.06	12.4	666.2
09/12/2012 11:10	16800	1725	152.1	0.028	7.50	8.7	14.06	12.4	666.5
09/12/2012 11:11	16624	1707	151.4	0.027	7.40	8.6	14.04	12.3	667.0
09/12/2012 11:12	16566	1701	150.9	0.027	7.40	8.6	14.04	12.3	667.2
09/12/2012 11:13	16692	1714	151.3	0.027	7.32	8.5	14.05	12.3	667.0
09/12/2012 11:14	16625	1707	151.4	0.027	7.25	8.4	14.06	12.4	667.5
09/12/2012 11:15	16666	1712	151.7	0.027	7.25	8.4	14.06	12.3	667.5
09/12/2012 11:16	16779	1723	152.3	0.027	7.25	8.4	14.06	12.3	667.5
09/12/2012 11:17	16775	1723	152.6	0.027	7.25	8.4	14.06	12.3	667.5
09/12/2012 11:18	16808	1726	152.8	0.027	7.25	8.4	14.06	12.3	667.5
09/12/2012 11:19	16769	1722	152.5	0.027	7.25	8.4	14.06	12.3	667.4
09/12/2012 11:20	16691	1714	152.2	0.027	7.24	8.4	14.05	12.2	667.3
09/12/2012 11:21	16756	1721	152.2	0.026	7.14	8.3	14.04	12.2	667.2
09/12/2012 11:22	16761	1721	151.9	0.026	7.14	8.3	14.04	12.1	667.0
09/12/2012 11:23	16686	1714	151.9	0.027	7.24	8.4	14.05	12.0	667.0
09/12/2012 11:24	16653	1710	152.2	0.027	7.21	8.4	14.03	12.0	666.9
09/12/2012 11:25	16686	1714	151.7	0.027	7.41	8.6	14.05	12.0	666.9
09/12/2012 11:26	16702	1715	152.3	0.027	7.31	8.5	14.04	12.0	667.2
09/12/2012 11:27	16719	1717	152.5	0.027	7.41	8.6	14.05	12.1	667.5
09/12/2012 11:28	16735	1719	151.9	0.027	7.22	8.4	14.04	12.1	667.5
09/12/2012 11:29	16658	1711	152.0	0.027	7.32	8.5	14.05	12.2	667.5
09/12/2012 11:30	16683	1713	151.9	0.027	7.30	8.5	14.03	11.8	667.7
09/12/2012 11:31	16732	1718	151.1	0.027	7.30	8.5	14.03	11.8	667.6
09/12/2012 11:32	16671	1712	151.7	0.027	7.39	8.6	14.03	11.8	667.6
09/12/2012 11:33	16669	1712	151.8	0.027	7.41	8.6	14.05	11.8	667.6
09/12/2012 11:34	16650	1710	151.6	0.027	7.31	8.5	14.04	11.8	667.6
09/12/2012 11:35	16571	1702	150.9	0.027	7.40	8.6	14.04	11.8	667.6
09/12/2012 11:36	16647	1710	150.9	0.027	7.40	8.6	14.04	11.8	667.6
09/12/2012 11:37	16547	1699	151.0	0.027	7.41	8.6	14.05	11.8	667.6
09/12/2012 11:38	16599	1705	150.0	0.027	7.30	8.5	14.03	11.8	667.5
09/12/2012 11:39	16532	1698	150.2	0.027	7.31	8.5	14.04	11.7	667.5
09/12/2012 11:40	16597	1705	151.0	0.026	7.14	8.3	14.04	11.8	667.5
09/12/2012 11:41	16677	1713	150.5	0.026	7.16	8.3	14.06	11.9	667.5
09/12/2012 11:42	16560	1701	150.8	0.026	7.14	8.3	14.04	11.9	667.3
09/12/2012 11:43	16589	1704	151.1	0.027	7.22	8.4	14.04	11.9	666.9
09/12/2012 11:44	16680	1713	151.3	0.026	7.14	8.3	14.04	11.9	667.5
09/12/2012 11:45	16550	1700	150.5	0.027	7.22	8.4	14.04	11.8	667.5
09/12/2012 11:46	16669	1712	151.3	0.027	7.22	8.4	14.04	11.7	667.5
09/12/2012 11:47	16671	1712	150.8	0.027	7.33	8.5	14.06	11.7	667.5
09/12/2012 11:48	16699	1715	151.5	0.027	7.41	8.6	14.05	11.6	667.5
09/12/2012 11:49	16555	1700	151.3	0.027	7.41	8.6	14.05	11.6	667.6
09/12/2012 11:50	16778	1723	151.5	0.027	7.31	8.5	14.04	11.5	667.5

Period Start:	Average 2GasFlow hscfh	Average 2HI_Gas MB/Hr	Average 2UnitLoad mw	Average 2NOxlbmm lb/mb	Average 2NOxCorr15 ppm	Average 2NOx ppm	Average 2O2 %	Average 2NH3Flow gph	Average 2CatInTemp DegF
09/12/2012 11:51	16694	1714	152.1	0.027	7.32	8.5	14.05	11.5	667.6
09/12/2012 11:52	16606	1705	151.1	0.027	7.31	8.5	14.04	11.4	667.6
09/12/2012 11:53	16650	1710	150.9	0.027	7.30	8.5	14.03	11.3	667.6
09/12/2012 11:54	16725	1718	151.7	0.027	7.41	8.6	14.05	11.3	667.5
09/12/2012 11:55	16706	1716	151.5	0.028	7.47	8.7	14.03	11.3	667.5
09/12/2012 11:56	16674	1712	151.2	0.027	7.39	8.6	14.03	11.4	667.5
09/12/2012 11:57	16719	1717	152.1	0.027	7.31	8.5	14.04	11.4	667.5
09/12/2012 11:58	16716	1717	152.3	0.027	7.21	8.4	14.03	11.4	667.5
09/12/2012 11:59	16689	1714	152.3	0.027	7.30	8.5	14.03	11.4	667.4
09/12/2012 12:00	16795	1725	152.1	0.027	7.21	8.4	14.03	11.3	667.0
09/12/2012 12:01	16753	1721	151.8	0.027	7.30	8.5	14.03	11.3	666.9
09/12/2012 12:02	16650	1710	151.5	0.027	7.39	8.6	14.03	11.2	666.9
09/12/2012 12:03	16594	1704	151.0	0.027	7.38	8.6	14.02	11.2	667.2
09/12/2012 12:04	16678	1713	151.4	0.027	7.46	8.7	14.02	11.3	667.0
09/12/2012 12:05	16672	1712	151.8	0.028	7.48	8.7	14.04	11.4	667.4
09/12/2012 12:06	16632	1708	151.4	0.027	7.38	8.6	14.02	11.3	667.5
09/12/2012 12:07	16649	1710	152.1	0.027	7.28	8.5	14.01	11.3	667.5
09/12/2012 12:08	16664	1711	151.6	0.027	7.38	8.6	14.02	11.3	667.5
09/12/2012 12:09	16710	1716	152.0	0.027	7.29	8.5	14.02	11.3	667.5
09/12/2012 12:10	16730	1718	151.8	0.027	7.30	8.5	14.03	11.3	667.6
09/12/2012 12:11	16760	1721	152.0	0.027	7.39	8.6	14.03	11.3	667.7
09/12/2012 12:12	16739	1719	152.7	0.027	7.39	8.6	14.03	11.3	667.8
09/12/2012 12:13	16736	1719	152.2	0.027	7.39	8.6	14.03	11.3	667.6
09/12/2012 12:14	16739	1719	152.1	0.027	7.39	8.6	14.03	11.3	667.6
09/12/2012 12:15	16661	1711	151.8	0.027	7.39	8.6	14.03	11.1	667.5
09/12/2012 12:16	16708	1716	152.1	0.027	7.40	8.6	14.04	11.0	667.5
09/12/2012 12:17	16714	1717	151.8	0.028	7.49	8.7	14.05	11.1	667.5
09/12/2012 12:18	16663	1711	151.5	0.028	7.57	8.8	14.04	11.2	667.4
09/12/2012 12:19	16746	1720	152.2	0.028	7.56	8.8	14.03	11.3	666.9
09/12/2012 12:20	16809	1726	152.3	0.028	7.57	8.8	14.04	11.4	666.9
09/12/2012 12:21	16747	1720	151.6	0.028	7.47	8.7	14.03	11.3	666.9
09/12/2012 12:22	16664	1711	152.0	0.028	7.47	8.7	14.03	11.3	667.0
09/12/2012 12:23	16692	1714	151.7	0.028	7.64	8.9	14.03	11.4	666.9
09/12/2012 12:24	16710	1716	152.6	0.028	7.73	9.0	14.03	11.6	666.8
09/12/2012 12:25	16772	1722	151.7	0.028	7.64	8.9	14.03	11.8	667.3
09/12/2012 12:26	16644	1709	151.7	0.028	7.57	8.8	14.04	11.8	667.4
09/12/2012 12:27	16694	1714	151.7	0.028	7.47	8.7	14.03	11.8	667.5
09/12/2012 12:28	16624	1707	151.8	0.028	7.47	8.7	14.03	11.7	667.5
09/12/2012 12:29	16746	1720	151.8	0.028	7.47	8.7	14.03	11.6	667.6
09/12/2012 12:30	16650	1710	151.2	0.028	7.55	8.8	14.02	11.8	667.6
09/12/2012 12:31	16588	1704	151.9	0.028	7.58	8.8	14.05	12.0	667.6
09/12/2012 12:32	16774	1723	152.3	0.028	7.48	8.7	14.04	12.0	667.6
09/12/2012 12:33	16688	1714	152.0	0.027	7.41	8.6	14.05	11.9	667.7
09/12/2012 12:34	16600	1705	151.7	0.028	7.47	8.7	14.03	11.8	667.7
09/12/2012 12:35	16711	1716	151.8	0.028	7.49	8.7	14.05	11.9	667.6
09/12/2012 12:36	16619	1707	151.5	0.027	7.39	8.6	14.03	11.8	667.6
09/12/2012 12:37	16625	1707	150.7	0.028	7.47	8.7	14.03	11.8	667.5
09/12/2012 12:38	16624	1707	150.8	0.028	7.47	8.7	14.03	11.7	667.5

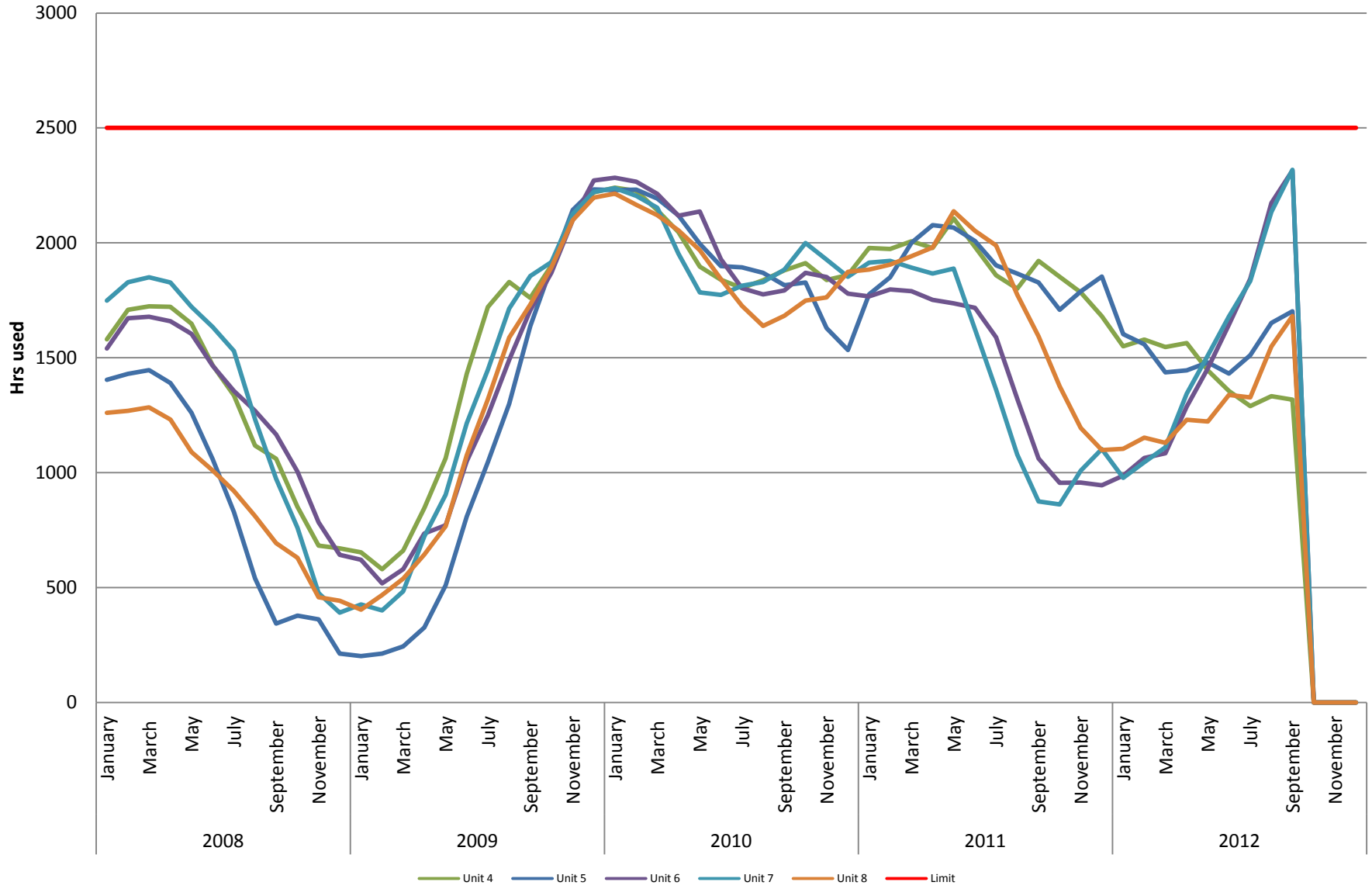
Period Start:	Average 2GasFlow hscfh	Average 2HI_Gas MB/Hr	Average 2UnitLoad mw	Average 2NOxlbmm lb/mb	Average 2NOxCorr15 ppm	Average 2NOx ppm	Average 2O2 %	Average 2NH3Flow gph	Average 2CatInTemp DegF
09/12/2012 12:39	16635	1708	151.4	0.028	7.48	8.7	14.04	11.8	667.5
09/12/2012 12:40	16650	1710	150.8	0.028	7.47	8.7	14.03	11.8	667.4
09/12/2012 12:41	16716	1717	151.0	0.027	7.39	8.6	14.03	11.7	667.3
09/12/2012 12:42	16658	1711	150.7	0.028	7.47	8.7	14.03	11.7	667.5
09/12/2012 12:43	16742	1719	151.0	0.028	7.47	8.7	14.03	11.6	667.5
09/12/2012 12:44	16610	1706	151.6	0.028	7.49	8.7	14.05	11.7	667.5
09/12/2012 12:45	16625	1707	151.5	0.028	7.48	8.7	14.04	11.7	667.5
09/12/2012 12:46	16744	1720	151.9	0.027	7.39	8.6	14.03	11.7	667.6
09/12/2012 12:47	16699	1715	151.6	0.027	7.39	8.6	14.03	11.7	667.7
09/12/2012 12:48	16694	1714	151.8	0.027	7.39	8.6	14.03	11.6	667.6
09/12/2012 12:49	16764	1722	152.2	0.027	7.39	8.6	14.03	11.7	667.6
09/12/2012 12:50	16700	1715	152.0	0.027	7.46	8.7	14.02	11.7	667.7
09/12/2012 12:51	16747	1720	151.5	0.028	7.48	8.7	14.04	11.7	667.6
09/12/2012 12:52	16627	1708	150.7	0.027	7.39	8.6	14.03	11.5	667.7
09/12/2012 12:53	16775	1723	152.4	0.027	7.39	8.6	14.03	11.6	667.6
09/12/2012 12:54	16716	1717	152.8	0.027	7.31	8.5	14.04	11.6	667.6
09/12/2012 12:55	16777	1723	152.7	0.027	7.32	8.5	14.05	11.6	667.5
09/12/2012 12:56	16703	1715	152.5	0.026	7.16	8.3	14.06	11.5	667.5
09/12/2012 12:57	16756	1721	152.2	0.026	6.99	8.1	14.06	11.5	667.5
09/12/2012 12:58	16803	1726	153.0	0.026	7.06	8.2	14.05	11.5	667.5
09/12/2012 12:59	16769	1722	152.8	0.026	7.13	8.3	14.03	11.5	667.2
09/12/2012 13:00	16759	1721	152.6	0.027	7.21	8.4	14.03	11.4	667.0
09/12/2012 13:01	16721	1717	152.3	0.027	7.28	8.5	14.01	11.4	667.0
09/12/2012 13:02	16650	1710	152.5	0.027	7.46	8.7	14.02	11.4	667.3
09/12/2012 13:03	16739	1719	152.1	0.028	7.56	8.8	14.03	11.6	667.4
09/12/2012 13:04	16721	1717	151.6	0.028	7.64	8.9	14.03	11.8	667.5
09/12/2012 13:05	16688	1714	151.8	0.028	7.56	8.8	14.03	11.8	667.5
09/12/2012 13:06	16768	1722	152.5	0.028	7.58	8.8	14.05	12.0	667.5
09/12/2012 13:07	16695	1715	152.8	0.028	7.57	8.8	14.04	12.1	667.5
09/12/2012 13:08	16710	1716	152.6	0.028	7.58	8.8	14.05	12.2	667.6
09/12/2012 13:09	16682	1713	152.6	0.028	7.56	8.8	14.03	12.2	667.7
09/12/2012 13:10	16700	1715	152.5	0.028	7.58	8.8	14.05	12.2	667.7
09/12/2012 13:11	16749	1720	152.6	0.028	7.48	8.7	14.04	12.2	667.8
09/12/2012 13:12	16741	1719	152.0	0.028	7.47	8.7	14.03	12.1	667.6
09/12/2012 13:13	16724	1718	151.8	0.028	7.47	8.7	14.03	12.0	667.6
09/12/2012 13:14	16727	1718	151.5	0.027	7.39	8.6	14.03	12.0	667.5
09/12/2012 13:15	16727	1718	152.9	0.027	7.41	8.6	14.05	12.0	667.5
Daily Average*	15136	1555	134.7	0.027	7.24	8.0	14.37	10.9	649.3
Maximum*	16852	1731	153.6	0.035	9.40	9.8	15.01	12.6	667.8
	09/12/2012 10:33	09/12/2012 10:33	09/12/2012 10:34	09/12/2012 9:39	09/12/2012 9:39	09/12/2012 9:39	09/12/2012 8:29	09/12/2012 10:18	09/12/2012 13:11
Minimum*	11920	1224	97.8	0.023	6.25	6.3	14.01	5.0	620.4
	09/12/2012 8:29	09/12/2012 8:29	09/12/2012 8:29	09/12/2012 10:29	09/12/2012 8:36	09/12/2012 8:36	09/12/2012 13:01	09/12/2012 9:37	09/12/2012 8:25

* Does not include Invalid Averaging Periods ("N/A")

MGS Monthly Available Hours of Operation (Hours Available) Based on 12-Month Rollin

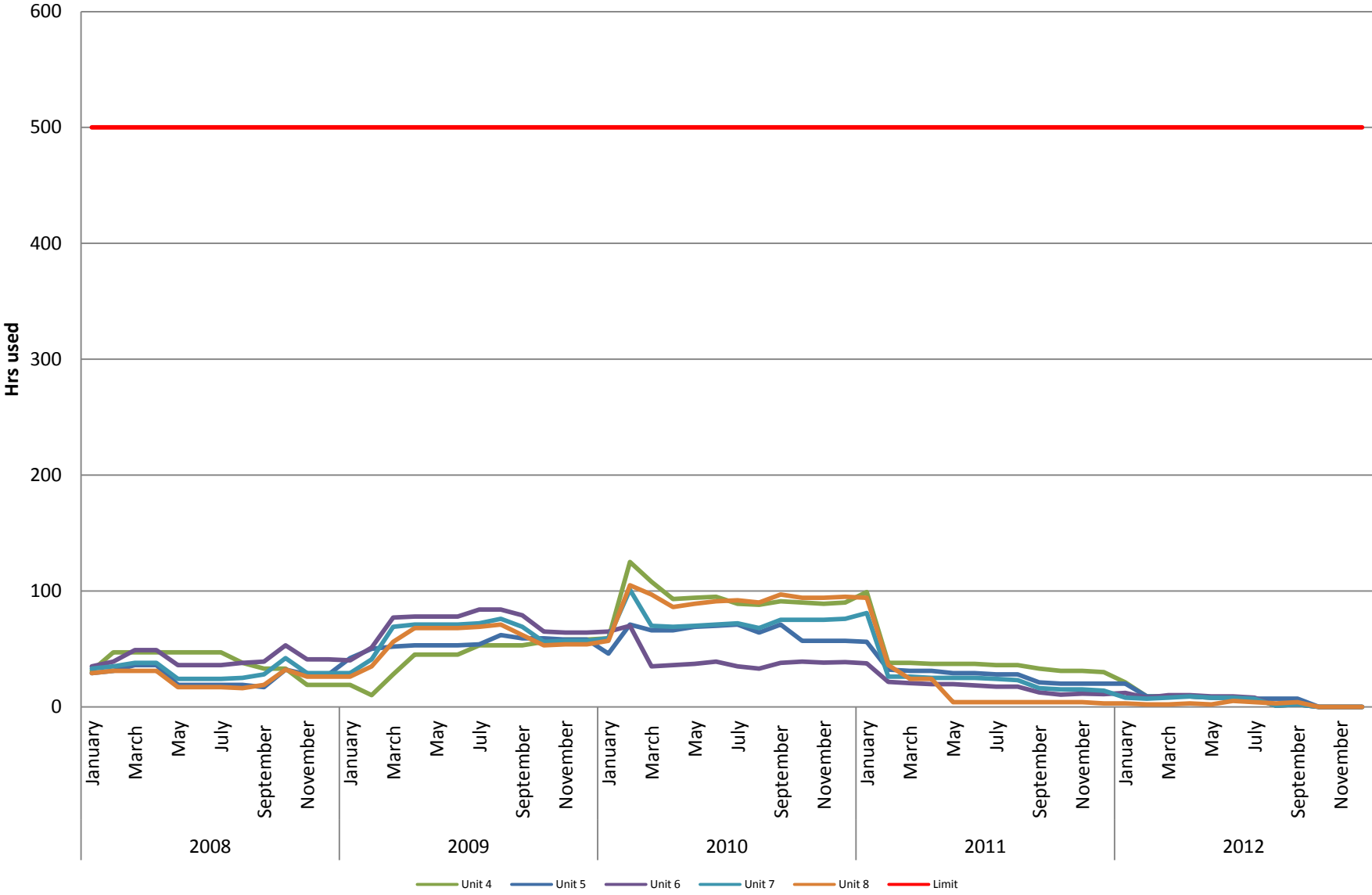


MGS Peaker Monthly Operating Summary (Hours used) 12-Month Rolling Average from PNG

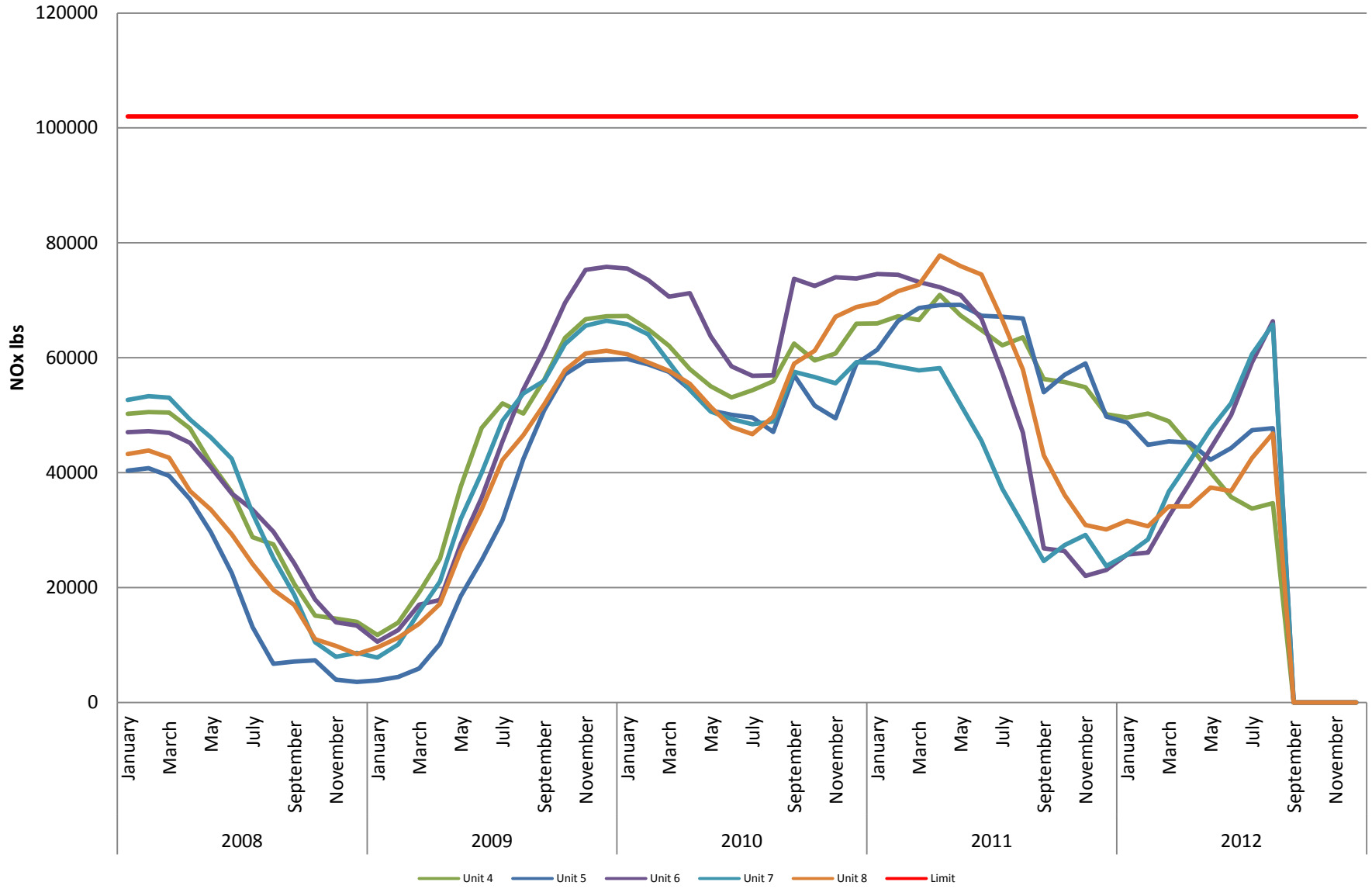


MGS Peaker Monthly Operating Summary (Hrs used)

12-Month Rolling Average from DSL

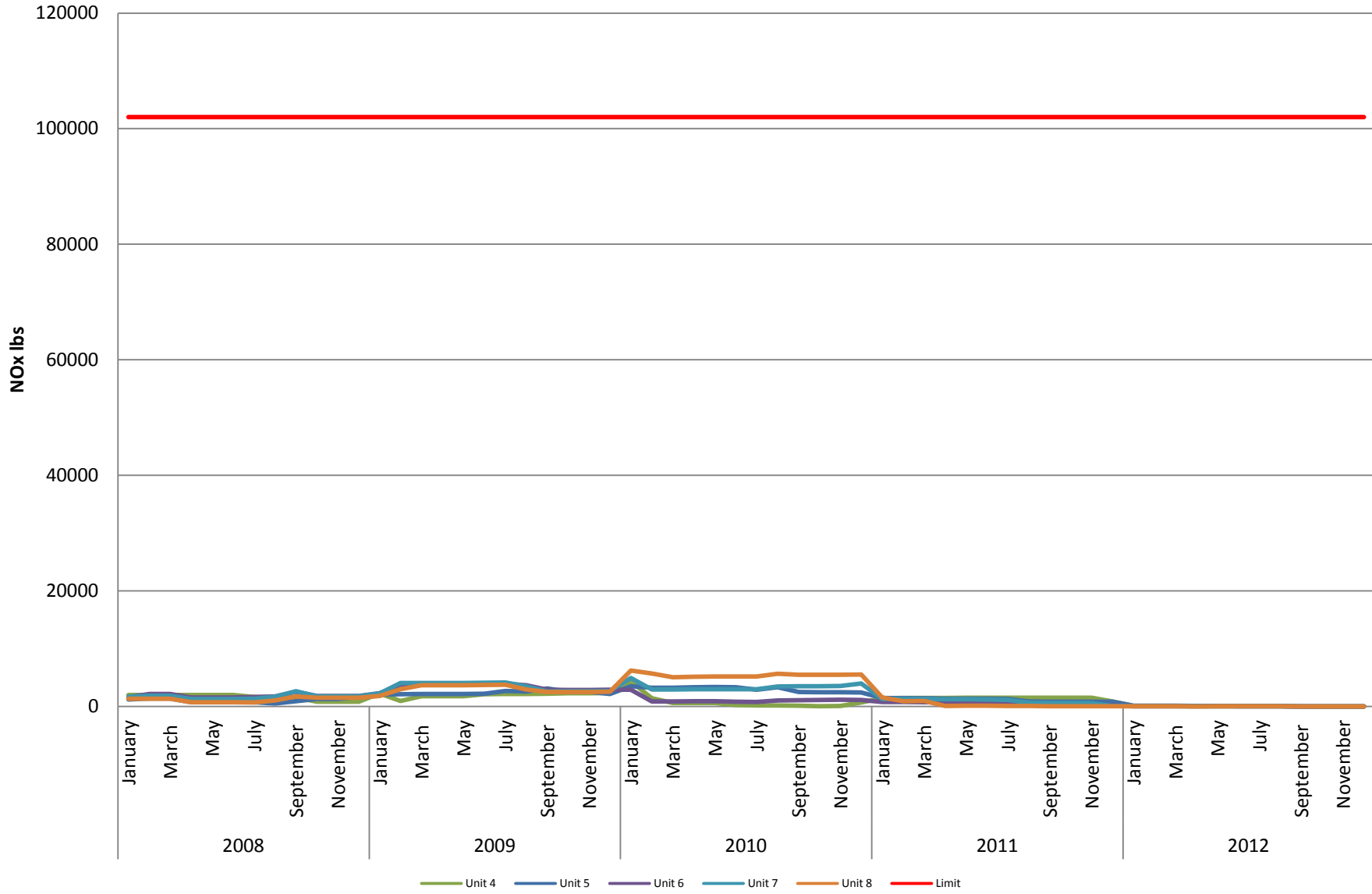


MGS Peaker Monthly NOx Emission Summary 12-Month Rolling Average from PNG



MGS Peaker Monthly NOx Emission Summary

12-Month Rolling Average from DSL





INSPECTORATE

A Eurofin Veritas Group Company

Certificate of Analysis

Vessel / Shore Tank : Midulla Inventory
Product : # 2 Diesel Fuel Oil
Client Reference : NONE
Terminal / Port / Office : Seminole Electric
Job ID : TA17578
Sample Details : Midulla Shore Tank Samples
Comments :

Sample Submitted By : IAC Tampa
Analysis Performed By : IAC Tampa
Date Sampled : 29-Mar-2012
Date Reported : 03-Apr-2012
Submission ID : 2012-018-00206

Method	Sample Type Sample Description Sample Number	Running	Running	Running
		A 00206-001	B 00206-002	C 00206-003
Method	Test	Result	Result	Result
ASTM D4052	API Gravity @ 60°F	35.4	36.1	36.1
	Density at 15°C , kg/m3	847.5	844.1	843.9
	Relative Density (Specific Gravity) at 15.56 / 15.56°C (60/60 °F)	0.8479	0.8445	0.8443
ASTM D4294	Sulfur Content , mass %	0.0362	0.0207	0.0304
ASTM D240	Gross Heat of Combustion , BTU/lb	19555	19684	19646
	Unit Conversion , Mj/kg / BTU/gal	45.485 / 138038	45.785 / 138378	45.785 / 138111
	Net Heat of Combustion , BTU/lb	18321	18409	18428
	Net Heat of Combustion Unit Conversion , Mj/kg / BTU/gal	42.615 / 129331	42.820 / 129412	42.865 / 129546
ASTM D5291 Method C	Hydrogen , mass %	13.5	14.0	13.8
ASTM D445	Test Temperature	40°C (104°F)	40°C (104°F)	40°C (104°F)
	Kinematic Viscosity , cSt	2.590	2.732	2.472
ASTM D86	Obs. Barometric Pressure , mm Hg	760	760	760
	Initial Boiling Point , ° F	345.2	363.1	347.7
	5% Recovered , ° F	398.8	405.1	392.4
	10% Recovered , ° F	413.4	419.7	410.7
	20% Recovered , ° F	441.5	446.1	436.2
	30% Recovered , ° F	465.5	470.4	459.5
	40% Recovered , ° F	488.5	492.6	480.9
	50% Recovered , ° F	509.2	514.7	501.5
	60% Recovered , ° F	531.0	536.2	524.7
	70% Recovered , ° F	553.9	559.1	548.9
	80% Recovered , ° F	580.1	583.8	575.9
	90% Recovered , ° F	613.5	616.4	610.1
	95% Recovered , ° F	640.1	643.5	638.4
	Endpoint , ° F	662.9	664.8	657.6
	Recovery , %	98.2	98.3	98.0
Residue , %	1.4	1.4	1.6	
Loss , %	0.4	0.3	0.4	
ASTM D4530	Carbon Residue, 10% Btm , % (m/m)	0.1	0.1	0.2
ASTM D482	Ash Content , mass %	<0.001	0.0013	<0.001
ASTM D2500	Cloud Point , ° C / ° F	-13 / 9	-13 / 9	-14 / 7
ASTM D95	Water , % (v/v)	0.00	0.00	0.00
ASTM D473	Sediment Content , mass % / vol %	0 / 0.00	0 / 0.00	0 / 0.00
ASTM D130	Copper Corrosion at 50°C (122°F) for 3h	1a	1a	1a
ASTM D93 Proc. A	Manual / Automated	Manual	Manual	Manual
	Flash Point , ° C / ° F	67.0 / 153	69.0 / 156	64.0 / 147
ASTM D5191-07, EPA Calc.	Dry Vapor Pressure Eq. , psi	<1	<1	<1
ASTM D6217	Sample Volume , L	1	1	1
	Particulate Contamination , ppm (mg/L)	0.9	3.5	1.0
IAC - 002	Calcium , ppm (mg/kg)	0.10	<0.10	<0.10
	Copper , ppm (mg/kg)	<0.10	<0.10	<0.10
	Potassium , ppm (mg/kg)	<0.10	<0.10	<0.10
	Sodium , ppm (mg/kg)	<0.10	<0.10	<0.10
	Lead , ppm (mg/kg)	<0.10	<0.10	<0.10
	Vanadium , ppm (mg/kg)	<0.50	<0.50	<0.50

Matthew Williams
Apr 3 2012 2:50 PM

For Inspectorate:

Matt Williams, Division Manager



Certificate of Analysis

Vessel / Shore Tank : Midulla Generators
Product : # 2 Fuel Oil
Client Reference : NONE
Terminal / Port / Office : Seminole Electric
Job ID : TA17579
Sample Details : CT1 12/21/11 - Submitted
Comments :

Sample Submitted By : Seminole Electric
Analysis Performed By : IAC Tampa
Date Sampled : 21-Dec-2011
Date Reported : 03-Apr-2012
Submission ID : 2012-018-00205

Sample Type		CT1 12/21/11	CT1 1/10/12	CT1 3/28/12	CT1 3/29/12
Sample Description					
Sample Number		00205-001	00205-002	00205-003	00205-004
Method	Test	Result	Result	Result	Result
ASTM D240	Gross Heat of Combustion , BTU/lb	19531	19671	19251	19615
	Unit Conversion , Mj/kg / BTU/gal	45.430 / 137869	45.755 / 138287	44.780 / 135816	45.625 / 138462
	Net Heat of Combustion , BTU/lb	18300	18406	18006	18367
	Net Heat of Combustion Unit Conversion , Mj/kg / BTU/gal	42.565 / 129183	42.815 / 129396	41.880 / 127033	42.725 / 129656
ASTM D4052	API Gravity @ 60°F	35.4	36.1	35.5	35.4
	Density at 15°C , kg/m3	847.5	844.1	846.8	847.4
	Relative Density (Specific Gravity) at 15.56 / 15.56°C (60/60 °F)	0.8480	0.8445	0.8473	0.8479
ASTM D7039-07 (EPA Correlated)	Sulfur Content , ppm (mg/kg)	240	75.4	232	235
ASTM D5291 Method C	Hydrogen , mass %	13.5	13.9	13.6	13.7

Sample Type		CT2 12/22/11	CT2 1/9/12	CT2 3/13/12	4A
Sample Description					
Sample Number		00205-005	00205-006	00205-007	00205-008
Method	Test	Result	Result	Result	Result
ASTM D240	Gross Heat of Combustion , BTU/lb	19616	19639	19617	19624
	Unit Conversion , Mj/kg / BTU/gal	45.625 / 138469	45.680 / 138148	45.630 / 138476	45.645 / 138369
	Net Heat of Combustion , BTU/lb	18375	18390	18366	18375
	Net Heat of Combustion Unit Conversion , Mj/kg / BTU/gal	42.740 / 129708	42.775 / 129355	42.720 / 129648	42.740 / 129559
ASTM D4052	API Gravity @ 60°F	35.4	36.0	35.4	35.6
	Density at 15°C , kg/m3	847.5	844.5	847.5	846.3
	Relative Density (Specific Gravity) at 15.56 / 15.56°C (60/60 °F)	0.8480	0.8449	0.8479	0.8467
ASTM D7039-07 (EPA Correlated)	Sulfur Content , ppm (mg/kg)	237	178	240	181
ASTM D5291 Method C	Hydrogen , mass %	13.6	13.7	13.7	13.7

Sample Type		4B	5A	5B	6A
Sample Description					
Sample Number		00205-009	00205-010	00205-011	00205-012
Method	Test	Result	Result	Result	Result
ASTM D240	Gross Heat of Combustion , BTU/lb	19629	19675	19670	19678
	Unit Conversion , Mj/kg / BTU/gal	45.655 / 138404	45.765 / 138551	45.750 / 138438	45.770 / 138336
	Net Heat of Combustion , BTU/lb	18371	18426	18401	18416
	Net Heat of Combustion Unit Conversion , Mj/kg / BTU/gal	42.725 / 129536	42.825 / 129753	42.800 / 129503	42.835 / 129467
ASTM D4052	API Gravity @ 60°F	35.6	35.8	35.9	36.1
	Density at 15°C , kg/m3	846.2	845.3	845.1	844.1
	Relative Density (Specific Gravity) at 15.56 / 15.56°C (60/60 °F)	0.8467	0.8457	0.8455	0.8445
ASTM D7039-07 (EPA Correlated)	Sulfur Content , ppm (mg/kg)	196	144	138	114
ASTM D5291 Method C	Hydrogen , mass %	13.8	13.7	13.9	13.8

Sample Type		7A	7B	8A	8B
Sample Description					
Sample Number		00205-013	00205-014	00205-015	00205-016
Method	Test	Result	Result	Result	Result
ASTM D240	Gross Heat of Combustion , BTU/lb	19704	19667	19654	19675
	Unit Conversion , Mj/kg / BTU/gal	45.830 / 138519	45.745 / 138259	45.715 / 138168	45.765 / 138315
	Net Heat of Combustion , BTU/lb	18476	18412	18390	18431
	Net Heat of Combustion Unit Conversion , Mj/kg / BTU/gal	42.975 / 129889	42.825 / 129437	42.775 / 129281	42.870 / 129573
ASTM D4052	API Gravity @ 60°F	36.1	36.1	36.1	36.1
	Density at 15°C , kg/m3	844.1	844.0	844.0	844.0
	Relative Density (Specific Gravity) at 15.56 / 15.56°C (60/60 °F)	0.8445	0.8445	0.8444	0.8444
ASTM D7039-07 (EPA Correlated)	Sulfur Content , ppm (mg/kg)	126	127	131	134
ASTM D5291 Method C	Hydrogen , mass %	13.5	13.8	13.9	13.6


 Matthew Williams
 Apr 3 2012 3:01 PM
 For Inspectorate: _____
 Matt Williams, Division Manager



Certificate of Analysis

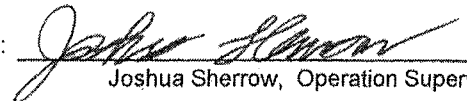
Vessel / Shore Tank : Midulla Generators
Product : Fuel Oil
Client Reference : None
Terminal / Port / Office : Seminole Electric
Job ID : 2012-018-00133
Comments :

Sample Submitted By : Seminole Electric
Analysis Performed By : IAC Tampa
Date Sampled : 10-Feb-2012
Date Reported : 24-Feb-2012
Submission ID : 2012-018-00133

Midulla Generators, SEC I		
2012-018-00133-001		CT 1
Method	Test	Result
ASTM D4052	API Gravity @ 60°F	36.1
	Density at 15°C , kg/m3	844.0
	Relative Density (Specific Gravity) at 15.56 / 15.56°C	0.8445
ASTM D7039	Sulfur Content , ppm (mg/kg)	75.0 <i>.000075 %</i>
ASTM D240	Gross Heat of Combustion , BTU/lb	<u>19672</u>
	Unit Conversion , BTU/gal	138294
ASTM D5291 Method C	Carbon , mass %	86.5
	Hydrogen , mass %	13.8
	Nitrogen , mass %	0.9

Midulla Generators, SEC I		
2012-018-00133-002		CT 2
Method	Test	Result
ASTM D4052	API Gravity @ 60°F	36.0
	Density at 15°C , kg/m3	844.3
	Relative Density (Specific Gravity) at 15.56 / 15.56°C	0.8448
ASTM D7039	Sulfur Content , ppm (mg/kg)	179 <i>.000179 %</i>
ASTM D240	Gross Heat of Combustion , BTU/lb	<u>19631</u>
	Unit Conversion , BTU/gal	138085
ASTM D5291 Method C	Carbon , mass %	86.8
	Hydrogen , mass %	13.7
	Nitrogen , mass %	0.8

For Inspectorate:


 Joshua Sherrow, Operation Supervisor



ECMPS Client Tool

Version 1.0 2012 Q2

Emissions Summary Report

September 13, 2012 09:27 AM

Facility Name: Midulla Generating Station

Facility Details

Facility ID (ORISPL): 7380
 Monitoring Plan Locations: 1
 State: FL
 County: Hardee

Quarterly Emissions Summary Data

Unit/Stack/Pipe	Year	Period	No. of Op. Hours	No. of Op. Days	Op. Time	Heat Input (mmBtu)	SO2 Mass (ton)	CO2 Mass (ton)	NOx Rate (lb/mmBtu)	NOx Mass (ton)	BCO2 Mass (ton)	
1	2011	QTR 1	513	29	495.52	736067	0.3	43857.6	0.032	11.3		
		QTR 2	1768	86	1719.92	2511149	0.8	149414.8	0.031	38.0		
		QTR 3	2170	92	2160.89	3212914	1.0	191033.8	0.030	47.5		
		QTR 4	1091	52	1058.06	1633712	0.5	97175.6	0.031	24.2		
		Ozone Season To Date	3381		3348.22	4940145					73.6	
		Year To Date	5542	259	5434.39	8093842	2.6	481481.8	0.031	121.0		

Fuel Operating Hours

Unit/Stack/Pipe	Year	Period	Fuel Code	No. of Op. Hours
1	2011	QTR 1	DSL	6
			PNG	512
		QTR 2	DSL	7
			PNG	1767
		QTR 3	DSL	4
			PNG	2170
		QTR 4	DSL	6
			PNG	1091



ECMPS Client Tool

Version 1.0 2012 Q2

Emissions Summary Report

September 13, 2012 09:28 AM

Facility Name: Midulla Generating Station

Facility Details

Facility ID (ORISPL): 7380
 Monitoring Plan Locations: 1
 State: FL
 County: Hardee

Quarterly Emissions Summary Data

Unit/Stack/Pipe	Year	Period	No. of Op. Hours	No. of Op. Days	Op. Time	Heat Input (mmBtu)	SO2 Mass (ton)	CO2 Mass (ton)	NOx Rate (lb/mmBtu)	NOx Mass (ton)	BCO2 Mass (ton)	
1	2012	QTR 1	1503	70	1466.53	2283949	0.8	135943.6	0.031	34.8		
		QTR 2	1777	88	1685.02	2547607	0.8	151457.4	0.032	38.6		
		Ozone Season To Date	1171		1113.35	1677410					25.3	
		Year To Date	3280	158	3151.55	4831556	1.6	287401.0	0.031	73.4		

Fuel Operating Hours

Unit/Stack/Pipe	Year	Period	Fuel Code	No. of Op. Hours
1	2012	QTR 1	DSL	8
			PNG	1500
		QTR 2	DSL	3
			PNG	1776



ECMPS Client Tool

Version 1.0 2012 Q2

Emissions Summary Report

September 13, 2012 09:28 AM

Facility Name: Midulla Generating Station

Facility Details

Facility ID (ORISPL): 7380
 Monitoring Plan Locations: 2
 State: FL
 County: Hardee

Quarterly Emissions Summary Data

Unit/Stack/Pipe	Year	Period	No. of Op. Hours	No. of Op. Days	Op. Time	Heat Input (mmBtu)	SO2 Mass (ton)	CO2 Mass (ton)	NOx Rate (lb/mmBtu)	NOx Mass (ton)	BCO2 Mass (ton)	
2	2011	QTR 1	1553	66	1548.97	2411421	0.9	143579.8	0.028	33.2		
		QTR 2	1719	84	1663.54	2439910	0.9	145341.4	0.031	36.9		
		QTR 3	1700	90	1602.16	2388386	0.8	142031.1	0.032	36.9		
		QTR 4	1527	70	1501.07	2317747	0.7	137808.6	0.032	35.9		
		Ozone Season To Date	2736		2587.75	3819148					59.1	
		Year To Date	6499	310	6315.74	9557464	3.3	568760.9	0.031	142.9		

Fuel Operating Hours

Unit/Stack/Pipe	Year	Period	Fuel Code	No. of Op. Hours
2	2011	QTR 1	DSL	10
			PNG	1549
		QTR 2	DSL	17
			PNG	1711
		QTR 3	DSL	5
			PNG	1699
		QTR 4	DSL	4
			PNG	1525



ECMPS Client Tool

Version 1.0 2012 Q2

Emissions Summary Report

September 13, 2012 09:28 AM

Facility Name: Midulla Generating Station

Facility Details

Facility ID (ORISPL): 7380
 Monitoring Plan Locations: 2
 State: FL
 County: Hardee

Quarterly Emissions Summary Data

Unit/Stack/Pipe	Year	Period	No. of Op. Hours	No. of Op. Days	Op. Time	Heat Input (mmBtu)	SO2 Mass (ton)	CO2 Mass (ton)	NOx Rate (lb/mmBtu)	NOx Mass (ton)	BCO2 Mass (ton)	
2	2012	QTR 1	1713	73	1702.74	2703384	1.7	160900.8	0.031	41.8		
		QTR 2	1866	82	1845.78	2819409	0.9	167629.3	0.030	42.5		
		Ozone Season To Date	1150		1131.17	1702768					25.8	
		Year To Date	3579	155	3548.52	5522793	2.6	328530.1	0.031	84.3		

Fuel Operating Hours

Unit/Stack/Pipe	Year	Period	Fuel Code	No. of Op. Hours
2	2012	QTR 1	DSL	9
			PNG	1708
		QTR 2	DSL	4
			PNG	1864



ECMPS Client Tool

Version 1.0 2012 Q2

Emissions Summary Report

September 13, 2012 09:29 AM

Facility Name: Midulla Generating Station

Facility Details

Facility ID (ORISPL): 7380
 Monitoring Plan Locations: 4A
 State: FL
 County: Hardee

Quarterly Emissions Summary Data

Unit/Stack/Pipe	Year	Period	No. of Op. Hours	No. of Op. Days	Op. Time	Heat Input (mmBtu)	SO2 Mass (ton)	CO2 Mass (ton)	NOx Rate (lb/mmBtu)	NOx Mass (ton)	BCO2 Mass (ton)
4A	2011	QTR 1	213	39	151.01	33632	0.0	2062.4	0.124	1.7	
		QTR 2	771	85	587.58	126434	0.0	7516.1	0.099	5.1	
		QTR 3	738	84	594.40	127314	0.0	7567.5	0.091	4.9	
		QTR 4	305	50	217.00	45924	0.0	2729.4	0.108	2.0	
		Ozone Season To Date	1240		975.63	204806				8.1	
		Year To Date	2027	258	1549.99	333304	0.0	19875.4	0.100	13.7	

Fuel Operating Hours

Unit/Stack/Pipe	Year	Period	Fuel Code	No. of Op. Hours
4A	2011	QTR 1	DSL	18
			PNG	202
		QTR 2	DSL	5
			PNG	770
		QTR 3	DSL	4
			PNG	736
		QTR 4	DSL	2
			PNG	305



ECMPS Client Tool

Version 1.0 2012 Q2

Emissions Summary Report

September 13, 2012 09:29 AM

Facility Name: Midulla Generating Station

Facility Details

Facility ID (ORISPL): 7380
 Monitoring Plan Locations: 4A
 State: FL
 County: Hardee

Quarterly Emissions Summary Data

Unit/Stack/Pipe	Year	Period	No. of Op. Hours	No. of Op. Days	Op. Time	Heat Input (mmBtu)	SO2 Mass (ton)	CO2 Mass (ton)	NOx Rate (lb/mmBtu)	NOx Mass (ton)	BCO2 Mass (ton)	
4A	2012	QTR 1	203	36	154.10	35520	0.0	2111.3	0.108	1.6		
		QTR 2	368	57	305.14	69197	0.0	4113.2	0.092	2.9		
		Ozone Season To Date	264		217.80	47832					2.0	
		Year To Date	571	93	459.24	104717	0.0	6224.5	0.098	4.5		

Fuel Operating Hours

Unit/Stack/Pipe	Year	Period	Fuel Code	No. of Op. Hours
4A	2012	QTR 1	DSL	1
			PNG	203
		QTR 2	DSL	1
			PNG	368



ECMPS Client Tool

Version 1.0 2012 Q2

Emissions Summary Report

September 13, 2012 09:29 AM

Facility Name: Midulla Generating Station

Facility Details

Facility ID (ORISPL): 7380
 Monitoring Plan Locations: 4B
 State: FL
 County: Hardee

Quarterly Emissions Summary Data

Unit/Stack/Pipe	Year	Period	No. of Op. Hours	No. of Op. Days	Op. Time	Heat Input (mmBtu)	SO2 Mass (ton)	CO2 Mass (ton)	NOx Rate (lb/mmBtu)	NOx Mass (ton)	BCO2 Mass (ton)
4B	2011	QTR 1	206	40	148.84	33944	0.0	2082.2	0.120	1.6	
		QTR 2	759	85	576.11	126115	0.0	7498.2	0.098	5.1	
		QTR 3	715	83	584.88	126584	0.0	7525.7	0.091	5.0	
		QTR 4	287	48	207.97	44634	0.0	2652.3	0.110	1.9	
		Ozone Season To Date	1210		960.65	204380				8.2	
		Year To Date	1967	256	1517.80	331277	0.0	19758.4	0.100	13.6	

Fuel Operating Hours

Unit/Stack/Pipe	Year	Period	Fuel Code	No. of Op. Hours
4B	2011	QTR 1	DSL	18
			PNG	195
		QTR 2	DSL	5
			PNG	758
		QTR 3	DSL	4
			PNG	713
		QTR 4	DSL	2
			PNG	287



ECMPS Client Tool

Version 1.0 2012 Q2

Emissions Summary Report

September 13, 2012 09:30 AM

Facility Name: Midulla Generating Station

Facility Details

Facility ID (ORISPL): 7380
 Monitoring Plan Locations: 4B
 State: FL
 County: Hardee

Quarterly Emissions Summary Data

Unit/Stack/Pipe	Year	Period	No. of Op. Hours	No. of Op. Days	Op. Time	Heat Input (mmBtu)	SO2 Mass (ton)	CO2 Mass (ton)	NOx Rate (lb/mmBtu)	NOx Mass (ton)	BCO2 Mass (ton)	
4B	2012	QTR 1	160	29	121.39	28144	0.0	1672.4	0.103	1.2		
		QTR 2	138	21	114.70	24578	0.0	1460.7	0.107	1.2		
		Ozone Season To Date	138		114.70	24578					1.2	
		Year To Date	298	50	236.09	52722	0.0	3133.1	0.105	2.4		

Fuel Operating Hours

Unit/Stack/Pipe	Year	Period	Fuel Code	No. of Op. Hours
4B	2012	QTR 1	DSL	1
			PNG	160
		QTR 2	PNG	138



ECMPS Client Tool

Version 1.0 2012 Q2

Emissions Summary Report

September 13, 2012 09:30 AM

Facility Name: Midulla Generating Station

Facility Details

Facility ID (ORISPL): 7380
 Monitoring Plan Locations: 5A
 State: FL
 County: Hardee

Quarterly Emissions Summary Data

Unit/Stack/Pipe	Year	Period	No. of Op. Hours	No. of Op. Days	Op. Time	Heat Input (mmBtu)	SO2 Mass (ton)	CO2 Mass (ton)	NOx Rate (lb/mmBtu)	NOx Mass (ton)	BCO2 Mass (ton)
5A	2011	QTR 1	505	68	363.90	78355	0.0	4657.1	0.121	3.8	
		QTR 2	429	61	316.45	71336	0.0	4238.8	0.108	3.0	
		QTR 3	809	80	667.51	158030	0.0	9391.5	0.088	5.8	
		QTR 4	348	56	255.05	61500	0.0	3655.2	0.112	2.7	
		Ozone Season To Date	1165		933.86	216736				8.2	
		Year To Date	2091	265	1602.91	369221	0.0	21942.6	0.104	15.3	

Fuel Operating Hours

Unit/Stack/Pipe	Year	Period	Fuel Code	No. of Op. Hours
5A	2011	QTR 1	DSL	17
			PNG	494
		QTR 2	DSL	5
			PNG	427
		QTR 3	DSL	3
			PNG	808
		QTR 4	DSL	2
			PNG	348



ECMPS Client Tool

Version 1.0 2012 Q2

Emissions Summary Report

September 13, 2012 09:30 AM

Facility Name: Midulla Generating Station

Facility Details

Facility ID (ORISPL): 7380
 Monitoring Plan Locations: 5A
 State: FL
 County: Hardee

Quarterly Emissions Summary Data

Unit/Stack/Pipe	Year	Period	No. of Op. Hours	No. of Op. Days	Op. Time	Heat Input (mmBtu)	SO2 Mass (ton)	CO2 Mass (ton)	NOx Rate (lb/mmBtu)	NOx Mass (ton)	BCO2 Mass (ton)	
5A	2012	QTR 1	250	35	192.63	49405	0.0	2936.6	0.102	2.1		
		QTR 2	439	64	380.58	83720	0.0	4975.7	0.087	3.5		
		Ozone Season To Date	341		297.14	63040					2.6	
		Year To Date	689	99	573.21	133125	0.0	7912.3	0.093	5.6		

Fuel Operating Hours

Unit/Stack/Pipe	Year	Period	Fuel Code	No. of Op. Hours
5A	2012	QTR 1	DSL	1
			PNG	250
		QTR 2	DSL	1
			PNG	439



ECMPS Client Tool

Version 1.0 2012 Q2

Emissions Summary Report

September 13, 2012 09:31 AM

Facility Name: Midulla Generating Station

Facility Details

Facility ID (ORISPL): 7380
 Monitoring Plan Locations: 5B
 State: FL
 County: Hardee

Quarterly Emissions Summary Data

Unit/Stack/Pipe	Year	Period	No. of Op. Hours	No. of Op. Days	Op. Time	Heat Input (mmBtu)	SO2 Mass (ton)	CO2 Mass (ton)	NOx Rate (lb/mmBtu)	NOx Mass (ton)	BCO2 Mass (ton)
5B	2011	QTR 1	489	67	353.47	78459	0.0	4663.1	0.109	3.6	
		QTR 2	409	58	309.85	70126	0.0	4167.8	0.095	2.8	
		QTR 3	796	80	658.19	153685	0.0	9133.4	0.080	5.5	
		QTR 4	329	56	245.62	58697	0.0	3488.2	0.099	2.4	
		Ozone Season To Date	1137		919.51	211643				7.8	
		Year To Date	2023	261	1567.13	360967	0.0	21452.5	0.093	14.3	

Fuel Operating Hours

Unit/Stack/Pipe	Year	Period	Fuel Code	No. of Op. Hours
5B	2011	QTR 1	DSL	18
			PNG	479
		QTR 2	DSL	4
			PNG	408
		QTR 3	DSL	3
			PNG	795
		QTR 4	DSL	2
			PNG	329



ECMPS Client Tool

Version 1.0 2012 Q2

Emissions Summary Report

September 13, 2012 09:31 AM

Facility Name: Midulla Generating Station

Facility Details

Facility ID (ORISPL): 7380
 Monitoring Plan Locations: 5B
 State: FL
 County: Hardee

Quarterly Emissions Summary Data

Unit/Stack/Pipe	Year	Period	No. of Op. Hours	No. of Op. Days	Op. Time	Heat Input (mmBtu)	SO2 Mass (ton)	CO2 Mass (ton)	NOx Rate (lb/mmBtu)	NOx Mass (ton)	BCO2 Mass (ton)	
5B	2012	QTR 1	196	27	154.83	40236	0.0	2391.1	0.099	1.7		
		QTR 2	263	32	233.35	48762	0.0	2897.0	0.081	1.9		
		Ozone Season To Date	263		233.35	48762					1.9	
		Year To Date	459	59	388.18	88998	0.0	5288.1	0.089	3.6		

Fuel Operating Hours

Unit/Stack/Pipe	Year	Period	Fuel Code	No. of Op. Hours
5B	2012	QTR 1	DSL	1
			PNG	196
		QTR 2	PNG	263



ECMPS Client Tool

Version 1.0 2012 Q2

Emissions Summary Report

September 13, 2012 09:31 AM

Facility Name: Midulla Generating Station

Facility Details

Facility ID (ORISPL): 7380
 Monitoring Plan Locations: 6A
 State: FL
 County: Hardee

Quarterly Emissions Summary Data

Unit/Stack/Pipe	Year	Period	No. of Op. Hours	No. of Op. Days	Op. Time	Heat Input (mmBtu)	SO2 Mass (ton)	CO2 Mass (ton)	NOx Rate (lb/mmBtu)	NOx Mass (ton)	BCO2 Mass (ton)
6A	2011	QTR 1	54	13	30.80	6369	0.0	380.6	0.132	0.3	
		QTR 2	0	0	0.00	0	0.0	0.0	0.000	0.0	
		QTR 3	293	26	246.39	53525	0.0	3180.9	0.152	3.8	
		QTR 4	537	55	428.74	92004	0.0	5466.3	0.087	3.4	
		Ozone Season To Date	293		246.39	53525				3.8	
		Year To Date	884	94	705.93	151898	0.0	9027.8	0.111	7.5	

Fuel Operating Hours

Unit/Stack/Pipe	Year	Period	Fuel Code	No. of Op. Hours
6A	2011	QTR 1	DSL	4
			PNG	52
		QTR 2	NO DATA	0
		QTR 3	PNG	293
		QTR 4	DSL	2
			PNG	537



ECMPS Client Tool

Version 1.0 2012 Q2

Emissions Summary Report

September 13, 2012 09:32 AM

Facility Name: Midulla Generating Station

Facility Details

Facility ID (ORISPL): 7380
 Monitoring Plan Locations: 6A
 State: FL
 County: Hardee

Quarterly Emissions Summary Data

Unit/Stack/Pipe	Year	Period	No. of Op. Hours	No. of Op. Days	Op. Time	Heat Input (mmBtu)	SO2 Mass (ton)	CO2 Mass (ton)	NOx Rate (lb/mmBtu)	NOx Mass (ton)	BCO2 Mass (ton)	
6A	2012	QTR 1	464	53	366.07	89457	0.0	5316.0	0.094	3.5		
		QTR 2	762	79	687.01	142352	0.0	8459.7	0.082	5.5		
		Ozone Season To Date	528		481.17	98498					3.8	
		Year To Date	1226	132	1053.08	231809	0.0	13775.7	0.086	9.0		

Fuel Operating Hours

Unit/Stack/Pipe	Year	Period	Fuel Code	No. of Op. Hours
6A	2012	QTR 1	DSL	1
			PNG	464
		QTR 2	DSL	1
			PNG	762



ECMPS Client Tool

Version 1.0 2012 Q2

Emissions Summary Report

September 13, 2012 09:32 AM

Facility Name: Midulla Generating Station

Facility Details

Facility ID (ORISPL): 7380
 Monitoring Plan Locations: 6B
 State: FL
 County: Hardee

Quarterly Emissions Summary Data

Unit/Stack/Pipe	Year	Period	No. of Op. Hours	No. of Op. Days	Op. Time	Heat Input (mmBtu)	SO2 Mass (ton)	CO2 Mass (ton)	NOx Rate (lb/mmBtu)	NOx Mass (ton)	BCO2 Mass (ton)
6B	2011	QTR 1	115	25	71.10	16932	0.0	1032.8	0.150	1.1	
		QTR 2	197	44	130.32	29567	0.0	1757.2	0.108	1.3	
		QTR 3	424	56	336.44	74161	0.0	4408.1	0.083	2.7	
		QTR 4	509	55	410.09	89796	0.0	5335.9	0.087	3.4	
		Ozone Season To Date	561		428.43	94730				3.6	
		Year To Date	1245	180	947.95	210456	0.0	12534.0	0.095	8.5	

Fuel Operating Hours

Unit/Stack/Pipe	Year	Period	Fuel Code	No. of Op. Hours
6B	2011	QTR 1	DSL	6
			PNG	113
		QTR 2	DSL	3
			PNG	197
		QTR 3	DSL	2
			PNG	424
		QTR 4	DSL	2
			PNG	509



ECMPS Client Tool

Version 1.0 2012 Q2

Emissions Summary Report

September 13, 2012 09:33 AM

Facility Name: Midulla Generating Station

Facility Details

Facility ID (ORISPL): 7380
 Monitoring Plan Locations: 6B
 State: FL
 County: Hardee

Quarterly Emissions Summary Data

Unit/Stack/Pipe	Year	Period	No. of Op. Hours	No. of Op. Days	Op. Time	Heat Input (mmBtu)	SO2 Mass (ton)	CO2 Mass (ton)	NOx Rate (lb/mmBtu)	NOx Mass (ton)	BCO2 Mass (ton)	
6B	2012	QTR 1	349	38	273.48	66527	0.0	3953.3	0.090	2.6		
		QTR 2	757	80	679.07	144222	0.0	8570.8	0.080	5.5		
		Ozone Season To Date	526		474.88	99253					3.7	
		Year To Date	1106	118	952.55	210749	0.0	12524.1	0.083	8.1		

Fuel Operating Hours

Unit/Stack/Pipe	Year	Period	Fuel Code	No. of Op. Hours
6B	2012	QTR 1	PNG	349
		QTR 2	DSL	1
			PNG	757



ECMPS Client Tool

Version 1.0 2012 Q2

Emissions Summary Report

September 13, 2012 09:33 AM

Facility Name: Midulla Generating Station

Facility Details

Facility ID (ORISPL): 7380
 Monitoring Plan Locations: 7A
 State: FL
 County: Hardee

Quarterly Emissions Summary Data

Unit/Stack/Pipe	Year	Period	No. of Op. Hours	No. of Op. Days	Op. Time	Heat Input (mmBtu)	SO2 Mass (ton)	CO2 Mass (ton)	NOx Rate (lb/mmBtu)	NOx Mass (ton)	BCO2 Mass (ton)
7A	2011	QTR 1	16	6	10.39	2469	0.0	148.3	0.154	0.1	
		QTR 2	27	5	19.42	4406	0.0	261.8	0.108	0.2	
		QTR 3	268	27	225.72	49520	0.0	2943.6	0.085	1.8	
		QTR 4	560	49	452.71	99055	0.0	5886.7	0.100	3.9	
		Ozone Season To Date	268		225.72	49520				1.8	
		Year To Date	871	87	708.24	155450	0.0	9240.4	0.097	6.0	

Fuel Operating Hours

Unit/Stack/Pipe	Year	Period	Fuel Code	No. of Op. Hours
7A	2011	QTR 1	DSL	2
			PNG	15
		QTR 2	DSL	1
			PNG	27
		QTR 3	PNG	268
		QTR 4	DSL	1
PNG	560			



ECMPS Client Tool

Version 1.0 2012 Q2

Emissions Summary Report

September 13, 2012 09:33 AM

Facility Name: Midulla Generating Station

Facility Details

Facility ID (ORISPL): 7380
 Monitoring Plan Locations: 7A
 State: FL
 County: Hardee

Quarterly Emissions Summary Data

Unit/Stack/Pipe	Year	Period	No. of Op. Hours	No. of Op. Days	Op. Time	Heat Input (mmBtu)	SO2 Mass (ton)	CO2 Mass (ton)	NOx Rate (lb/mmBtu)	NOx Mass (ton)	BCO2 Mass (ton)	
7A	2012	QTR 1	528	61	425.62	110772	0.0	6583.9	0.101	4.5		
		QTR 2	716	81	627.90	132164	0.0	7854.3	0.082	5.1		
		Ozone Season To Date	476		418.85	88665					3.4	
		Year To Date	1244	142	1053.52	242936	0.0	14438.2	0.090	9.6		

Fuel Operating Hours

Unit/Stack/Pipe	Year	Period	Fuel Code	No. of Op. Hours
7A	2012	QTR 1	DSL	1
			PNG	528
		QTR 2	DSL	1
			PNG	716



ECMPS Client Tool

Version 1.0 2012 Q2

Emissions Summary Report

September 13, 2012 09:33 AM

Facility Name: Midulla Generating Station

Facility Details

Facility ID (ORISPL): 7380
 Monitoring Plan Locations: 7B
 State: FL
 County: Hardee

Quarterly Emissions Summary Data

Unit/Stack/Pipe	Year	Period	No. of Op. Hours	No. of Op. Days	Op. Time	Heat Input (mmBtu)	SO2 Mass (ton)	CO2 Mass (ton)	NOx Rate (lb/mmBtu)	NOx Mass (ton)	BCO2 Mass (ton)
7B	2011	QTR 1	95	28	61.67	14946	0.0	889.2	0.177	1.1	
		QTR 2	205	38	140.69	31867	0.0	1894.0	0.114	1.4	
		QTR 3	359	51	290.98	64243	0.0	3818.5	0.085	2.4	
		QTR 4	520	51	410.07	87814	0.0	5218.2	0.095	3.5	
		Ozone Season To Date	503		390.79	86513				3.4	
		Year To Date	1179	168	903.41	198870	0.0	11819.9	0.102	8.4	

Fuel Operating Hours

Unit/Stack/Pipe	Year	Period	Fuel Code	No. of Op. Hours
7B	2011	QTR 1	DSL	2
			PNG	94
		QTR 2	DSL	3
			PNG	205
		QTR 3	DSL	2
			PNG	359
		QTR 4	DSL	1
			PNG	520



ECMPS Client Tool

Version 1.0 2012 Q2

Emissions Summary Report

September 13, 2012 09:34 AM

Facility Name: Midulla Generating Station

Facility Details

Facility ID (ORISPL): 7380
 Monitoring Plan Locations: 7B
 State: FL
 County: Hardee

Quarterly Emissions Summary Data

Unit/Stack/Pipe	Year	Period	No. of Op. Hours	No. of Op. Days	Op. Time	Heat Input (mmBtu)	SO2 Mass (ton)	CO2 Mass (ton)	NOx Rate (lb/mmBtu)	NOx Mass (ton)	BCO2 Mass (ton)	
7B	2012	QTR 1	457	52	371.86	95470	0.0	5673.1	0.094	3.7		
		QTR 2	689	78	612.76	127343	0.0	7568.2	0.083	5.0		
		Ozone Season To Date	458		407.87	84913					3.4	
		Year To Date	1146	130	984.62	222813	0.0	13241.3	0.088	8.7		

Fuel Operating Hours

Unit/Stack/Pipe	Year	Period	Fuel Code	No. of Op. Hours
7B	2012	QTR 1	DSL	1
			PNG	457
		QTR 2	DSL	1
			PNG	689



ECMPS Client Tool

Version 1.0 2012 Q2

Emissions Summary Report

September 13, 2012 09:34 AM

Facility Name: Midulla Generating Station

Facility Details

Facility ID (ORISPL): 7380
 Monitoring Plan Locations: 8A
 State: FL
 County: Hardee

Quarterly Emissions Summary Data

Unit/Stack/Pipe	Year	Period	No. of Op. Hours	No. of Op. Days	Op. Time	Heat Input (mmBtu)	SO2 Mass (ton)	CO2 Mass (ton)	NOx Rate (lb/mmBtu)	NOx Mass (ton)	BCO2 Mass (ton)
8A	2011	QTR 1	281	49	196.67	46691	0.0	2774.6	0.112	2.2	
		QTR 2	576	74	427.39	97792	0.0	5812.1	0.094	3.7	
		QTR 3	242	43	177.59	40995	0.0	2436.6	0.082	1.4	
		QTR 4	382	60	286.65	64163	0.0	3813.9	0.100	2.6	
		Ozone Season To Date	557		405.62	90956				3.3	
		Year To Date	1481	226	1088.30	249641	0.0	14837.2	0.097	9.9	

Fuel Operating Hours

Unit/Stack/Pipe	Year	Period	Fuel Code	No. of Op. Hours
8A	2011	QTR 1	DSL	5
			PNG	280
		QTR 2	DSL	4
			PNG	575
		QTR 3	DSL	2
			PNG	242
		QTR 4	DSL	2
			PNG	382



ECMPS Client Tool

Version 1.0 2012 Q2

Emissions Summary Report

September 13, 2012 09:34 AM

Facility Name: Midulla Generating Station

Facility Details

Facility ID (ORISPL): 7380
 Monitoring Plan Locations: 8A
 State: FL
 County: Hardee

Quarterly Emissions Summary Data

Unit/Stack/Pipe	Year	Period	No. of Op. Hours	No. of Op. Days	Op. Time	Heat Input (mmBtu)	SO2 Mass (ton)	CO2 Mass (ton)	NOx Rate (lb/mmBtu)	NOx Mass (ton)	BCO2 Mass (ton)	
8A	2012	QTR 1	422	54	320.34	75796	0.0	4504.0	0.097	3.0		
		QTR 2	593	72	515.11	118804	0.0	7060.1	0.088	4.8		
		Ozone Season To Date	375		322.13	74658					3.1	
		Year To Date	1015	126	835.45	194600	0.0	11564.1	0.092	7.8		

Fuel Operating Hours

Unit/Stack/Pipe	Year	Period	Fuel Code	No. of Op. Hours
8A	2012	QTR 1	DSL	1
			PNG	422
		QTR 2	DSL	1
			PNG	593



ECMPS Client Tool

Version 1.0 2012 Q2

Emissions Summary Report

September 13, 2012 09:34 AM

Facility Name: Midulla Generating Station

Facility Details

Facility ID (ORISPL): 7380
 Monitoring Plan Locations: 8B
 State: FL
 County: Hardee

Quarterly Emissions Summary Data

Unit/Stack/Pipe	Year	Period	No. of Op. Hours	No. of Op. Days	Op. Time	Heat Input (mmBtu)	SO2 Mass (ton)	CO2 Mass (ton)	NOx Rate (lb/mmBtu)	NOx Mass (ton)	BCO2 Mass (ton)
8B	2011	QTR 1	273	47	188.72	46347	0.0	2754.3	0.122	2.4	
		QTR 2	563	73	423.05	98690	0.0	5865.3	0.101	4.0	
		QTR 3	21	4	14.33	3111	0.0	184.8	0.106	0.1	
		QTR 4	367	55	280.76	64331	0.0	3823.6	0.100	2.5	
		Ozone Season To Date	327		238.09	53181				2.2	
		Year To Date	1224	179	906.86	212479	0.0	12628.0	0.106	9.0	

Fuel Operating Hours

Unit/Stack/Pipe	Year	Period	Fuel Code	No. of Op. Hours
8B	2011	QTR 1	DSL	5
			PNG	272
		QTR 2	DSL	4
			PNG	562
		QTR 3	PNG	21
		QTR 4	DSL	2
PNG	367			



ECMPS Client Tool

Version 1.0 2012 Q2

Emissions Summary Report

September 13, 2012 09:35 AM

Facility Name: Midulla Generating Station

Facility Details

Facility ID (ORISPL): 7380
 Monitoring Plan Locations: 8B
 State: FL
 County: Hardee

Quarterly Emissions Summary Data

Unit/Stack/Pipe	Year	Period	No. of Op. Hours	No. of Op. Days	Op. Time	Heat Input (mmBtu)	SO2 Mass (ton)	CO2 Mass (ton)	NOx Rate (lb/mmBtu)	NOx Mass (ton)	BCO2 Mass (ton)	
8B	2012	QTR 1	407	53	316.33	76365	0.0	4538.4	0.096	3.0		
		QTR 2	593	74	516.18	115966	0.0	6891.3	0.089	4.9		
		Ozone Season To Date	377		324.40	71761					2.9	
		Year To Date	1000	127	832.51	192331	0.0	11429.7	0.092	7.9		

Fuel Operating Hours

Unit/Stack/Pipe	Year	Period	Fuel Code	No. of Op. Hours
8B	2012	QTR 1	DSL	1
			PNG	407
		QTR 2	DSL	1
			PNG	593